

TMCLK - Northern Connection Sub-Sea Tunnel Section

Contract Dates

Commencement and Completion Dates

KD01 - Achievement of Stage 1 - Nth TBM & C&C for E&MS/TCSS	◆ KD01 - Achievement of Stage 1 - Nth TBM & C&C for E&MS/TCSS
KD05 - Completion of Section 1A2 - Portion N1 to N4	◆ KD05 - Completion of Section 1A2 - Portion N1 to N4
KD07 - Completion of Section 1C - Portion N5 & N7	◆ KD07 - Completion of Section 1C - Portion N5 & N7

Site Possession Date

Portions: X1,(N10,11,13 & 14) - Sth Landfall	
Portions: N1 to N4 & N12	◆ N1 to N4 & N12

Handover Date

Portions: N1 - N4	◆ Portions: N1 - N4
Portions: N5 & N7	◆ Portions: N5 & N7
Portion: N6A	◆ Portion: N6A

General Submissions

PAYMENT MILESTONE

Design and Design Checking of the Works

MS 2.5 Submit AIP for seawall modification works at Southern Landfall	◆ MS 2.5 Submit AIP for seawall modification works at Southern Landfall
MS 2.6 Approve AIP for seawall modification works at Southern Landfall by the Supervising Officer	◆ MS 2.6 Approve AIP for seawall modification works at Southern Landfall by the Supervising Officer
MS 2.7 Submit DDA for seawall modification works at Southern Landfall	◆ MS 2.7 Submit DDA for seawall modification works at Southern Landfall
MS 2.44 Approve DDA for South Ventilation Building by the Supervising Officer	
MS 2.52 Approve DDA for Facilities Provision for TCSS by the Supervising Officer	
MS 2.60 Approve DDA for Drainage, Sewerage, Waterworks and Utilities at Northern Landfall by the Supervising Officer	
MS 2.69 Submit draft Operation and Maintenance Manual for all Tunnels and Cross Passgaes	
MS 2.70 Accept Operation and Maintenance Manual for all Tunnels and Cross Passgaes by the Supervising Officer	
MS 2.71 Submit draft Operation and Maintenance Manual for all works except Tunnels and Cross Passgaes	
MS 2.72 Accept Operation and Maintenance Manual for all works except Tunnels and Cross Passgaes by the Supervising Officer	

Tunnel Boring Machine (TBM) and Back-up Equipment for TBM Tunnel

MS 3.1.6 Removal of TBM for Southbound Tunnel from Site after the completion of TBM Tunnel	◆ MS 3.1.6 Removal of TBM for Southbound Tunnel from Site after the completion of TBM Tunnel
MS 3.1.12 Removal of TBM for Northbound Tunnel from Site after the completion of TBM Tunnel	◆ MS 3.1.12 Removal of TBM for Northbound Tunnel from Site after the completion of TBM Tunnel
MS 3.1.25 Demolition of Slurry Treatment Plant on completion	◆ MS 3.1.25 Demolition of Slurry Treatment Plant on completion
MS 3.1.26 Complete the whole of the activities under this Cost Centre Part to the satisfaction of the Supervising Officer	

TBM Tunnel

MS 3.3.4 Complete walls of retrieval shaft	
MS 3.3.5 Complete excavation to formation level for retrieval shaft and complete casting of base slab	◆ MS 3.3.5 Complete excavation to formation level for retrieval shaft and complete casting of base slab
MS 3.3.6 Complete all necessary works of retrieval shaft to facilitate retrieval of TBM	◆ MS 3.3.6 Complete all necessary works of retrieval shaft to facilitate retrieval of TBM
MS 3.3.43 Completion of excavation, support and permanent lining for 55% of the total length (measured on plan) of the Northbound TBM Tunnel	◆ MS 3.3.43 Completion of excavation, support and permanent lining for 55% of the total length (measured on plan) of the Northbound TBM Tunnel
MS 3.3.44 Completion of excavation, support and permanent lining for 57.5% of the total length (measured on plan) of the Northbound TBM Tunnel	◆ MS 3.3.44 Completion of excavation, support and permanent lining for 57.5% of the total length (measured on plan) of the Northbound TBM Tunnel
MS 3.3.45 Completion of excavation, support and permanent lining for 60% of the total length (measured on plan) of the Northbound TBM Tunnel	◆ MS 3.3.45 Completion of excavation, support and permanent lining for 60% of the total length (measured on plan) of the Northbound TBM Tunnel
MS 3.3.46 Completion of excavation, support and permanent lining for 62.5% of the total length (measured on plan) of the Northbound TBM Tunnel	◆ MS 3.3.46 Completion of excavation, support and permanent lining for 62.5% of the total length (measured on plan) of the Northbound TBM Tunnel
MS 3.3.47 Completion of excavation, support and permanent lining for 65% of the total length (measured on plan) of the Northbound TBM Tunnel	◆ MS 3.3.47 Completion of excavation, support and permanent lining for 65% of the total length (measured on plan) of the Northbound TBM Tunnel
MS 3.3.48 Completion of excavation, support and permanent lining for 67.5% of the total length (measured on plan) of the Northbound TBM Tunnel	◆ MS 3.3.48 Completion of excavation, support and permanent lining for 67.5% of the total length (measured on plan) of the Northbound TBM Tunnel
MS 3.3.49 Completion of excavation, support and permanent lining for 70% of the total length (measured on plan) of the Northbound TBM Tunnel	◆ MS 3.3.49 Completion of excavation, support and permanent lining for 70% of the total length (measured on plan) of the Northbound TBM Tunnel
MS 3.3.50 Completion of excavation, support and permanent lining for 72.5% of the total length (measured on plan) of the Northbound TBM Tunnel	◆ MS 3.3.50 Completion of excavation, support and permanent lining for 72.5% of the total length (measured on plan) of the Northbound TBM Tunnel
MS 3.3.51 Completion of excavation, support and permanent lining for 75% of the total length (measured on plan) of the Northbound TBM Tunnel	◆ MS 3.3.51 Completion of excavation, support and permanent lining for 75% of the total length (measured on plan) of the Northbound TBM Tunnel
MS 3.3.52 Completion of excavation, support and permanent lining for 77.5% of the total length (measured on plan) of the Northbound TBM Tunnel	◆ MS 3.3.52 Completion of excavation, support and permanent lining for 77.5% of the total length (measured on plan) of the Northbound TBM Tunnel
MS 3.3.53 Completion of excavation, support and permanent lining for 80% of the total length (measured on plan) of the Northbound TBM Tunnel	◆ MS 3.3.53 Completion of excavation, support and permanent lining for 80% of the total length (measured on plan) of the Northbound TBM Tunnel
MS 3.3.54 Completion of excavation, support and permanent lining for 82.5% of the total length (measured on plan) of the Northbound TBM Tunnel	◆ MS 3.3.54 Completion of excavation, support and permanent lining for 82.5% of the total length (measured on plan) of the Northbound TBM Tunnel
MS 3.3.55 Completion of excavation, support and permanent lining for 85% of the total length (measured on plan) of the Northbound TBM Tunnel	◆ MS 3.3.55 Completion of excavation, support and permanent lining for 85% of the total length (measured on plan) of the Northbound TBM Tunnel
MS 3.3.56 Completion of excavation, support and permanent lining for 87.5% of the total length (measured on plan) of the Northbound TBM Tunnel	◆ MS 3.3.56 Completion of excavation, support and permanent lining for 87.5% of the total length (measured on plan) of the Northbound TBM Tunnel
MS 3.3.57 Completion of excavation, support and permanent lining for 90% of the total length (measured on plan) of the Northbound TBM Tunnel	◆ MS 3.3.57 Completion of excavation, support and permanent lining for 90% of the total length (measured on plan) of the Northbound TBM Tunnel
MS 3.3.58 Completion of excavation, support and permanent lining for 92.5% of the total length (measured on plan) of the Northbound TBM Tunnel	◆ MS 3.3.58 Completion of excavation, support and permanent lining for 92.5% of the total length (measured on plan) of the Northbound TBM Tunnel
MS 3.3.59 Completion of excavation, support and permanent lining for 95% of the total length (measured on plan) of the Northbound TBM Tunnel	◆ MS 3.3.59 Completion of excavation, support and permanent lining for 95% of the total length (measured on plan) of the Northbound TBM Tunnel
MS 3.3.60 Completion of excavation, support and permanent lining for 97.5% of the total length (measured on plan) of the Northbound TBM Tunnel	◆ MS 3.3.60 Completion of excavation, support and permanent lining for 97.5% of the total length (measured on plan) of the Northbound TBM Tunnel
MS 3.3.61 Completion of excavation, support and permanent lining for 100% of the total length (measured on plan) of the Northbound TBM Tunnel	◆ MS 3.3.61 Completion of excavation, support and permanent lining for 100% of the total length (measured on plan) of the Northbound TBM Tunnel
MS 3.3.107 Completion of excavation, support and permanent lining for 77.5% of the total length (measured on plan) of the Southbound TBM Tunnel	◆ MS 3.3.107 Completion of excavation, support and permanent lining for 77.5% of the total length (measured on plan) of the Southbound TBM Tunnel
MS 3.3.108 Completion of excavation, support and permanent lining for 80% of the total length (measured on plan) of the Southbound TBM Tunnel	◆ MS 3.3.108 Completion of excavation, support and permanent lining for 80% of the total length (measured on plan) of the Southbound TBM Tunnel
MS 3.3.109 Completion of excavation, support and permanent lining for 82.5% of the total length (measured on plan) of the Southbound TBM Tunnel	◆ MS 3.3.109 Completion of excavation, support and permanent lining for 82.5% of the total length (measured on plan) of the Southbound TBM Tunnel
MS 3.3.110 Completion of excavation, support and permanent lining for 85% of the total length (measured on plan) of the Southbound TBM Tunnel	◆ MS 3.3.110 Completion of excavation, support and permanent lining for 85% of the total length (measured on plan) of the Southbound TBM Tunnel
MS 3.3.111 Completion of excavation, support and permanent lining for 87.5% of the total length (measured on plan) of the Southbound TBM Tunnel	◆ MS 3.3.111 Completion of excavation, support and permanent lining for 87.5% of the total length (measured on plan) of the Southbound TBM Tunnel
MS 3.3.112 Completion of excavation, support and permanent lining for 90% of the total length (measured on plan) of the Southbound TBM Tunnel	◆ MS 3.3.112 Completion of excavation, support and permanent lining for 90% of the total length (measured on plan) of the Southbound TBM Tunnel
MS 3.3.113 Completion of excavation, support and permanent lining for 92.5% of the total length (measured on plan) of the Southbound TBM Tunnel	◆ MS 3.3.113 Completion of excavation, support and permanent lining for 92.5% of the total length (measured on plan) of the Southbound TBM Tunnel
MS 3.3.114 Completion of excavation, support and permanent lining for 95% of the total length (measured on plan) of the Southbound TBM Tunnel	◆ MS 3.3.114 Completion of excavation, support and permanent lining for 95% of the total length (measured on plan) of the Southbound TBM Tunnel
MS 3.3.115 Completion of excavation, support and permanent lining for 97.5% of the total length (measured on plan) of the Southbound TBM Tunnel	◆ MS 3.3.115 Completion of excavation, support and permanent lining for 97.5% of the total length (measured on plan) of the Southbound TBM Tunnel
MS 3.3.116 Completion of excavation, support and permanent lining for 100% of the total length (measured on plan) of the Southbound TBM Tunnel	◆ MS 3.3.116 Completion of excavation, support and permanent lining for 100% of the total length (measured on plan) of the Southbound TBM Tunnel
MS 3.3.118 Complete tunnel internal structures for 50% of total length (measured on plan) of the Northbound TBM Tunnel	◆ MS 3.3.118 Complete tunnel internal structures for 50% of total length (measured on plan) of the Northbound TBM Tunnel
MS 3.3.119 Complete tunnel internal structures for 75% of total length (measured on plan) of the Northbound TBM Tunnel	◆ MS 3.3.119 Complete tunnel internal structures for 75% of total length (measured on plan) of the Northbound TBM Tunnel
MS 3.3.121 Complete tunnel internal structures for 25% of total length (measured on plan) of the Southbound TBM Tunnel	◆ MS 3.3.121 Complete tunnel internal structures for 25% of total length (measured on plan) of the Southbound TBM Tunnel
MS 3.3.122 Complete tunnel internal structures for 50% of total length (measured on plan) of the Southbound TBM Tunnel	◆ MS 3.3.122 Complete tunnel internal structures for 50% of total length (measured on plan) of the Southbound TBM Tunnel
MS 3.3.123 Complete tunnel internal structures for 75% of total length (measured on plan) of the Southbound TBM Tunnel	◆ MS 3.3.123 Complete tunnel internal structures for 75% of total length (measured on plan) of the Southbound TBM Tunnel

Cross Passages for TBM Tunnel

MS 3.3.1 Complete 50% of ground treatment for excavation of all Type 1 Cross Passages(Percentage to be certified for 50%)	◆ MS 3.3.1 Complete 50% of ground treatment for excavation of all Type 1 Cross Passages(Percentage to be certified for 50%)
MS 3.3.2 Complete 100% of ground treatment for excavation of all Type 1 Cross Passages(Percentage to be certified for 100%)	◆ MS 3.3.2 Complete 100% of ground treatment for excavation of all Type 1 Cross Passages(Percentage to be certified for 100%)
MS 3.3.3 Complete 50% of ground treatment for excavation of all Type 2 Cross Passages(Percentage to be certified for 50%)	◆ MS 3.3.3 Complete 50% of ground treatment for excavation of all Type 2 Cross Passages(Percentage to be certified for 50%)
MS 3.3.4 Complete 100% of ground treatment for excavation of all Type 2 Cross Passages(Percentage to be certified for 100%)	◆ MS 3.3.4 Complete 100% of ground treatment for excavation of all Type 2 Cross Passages(Percentage to be certified for 100%)
MS 3.3.5 Complete 50% of excavation and support for all Type 1 Cross Passages(Percentage to be certified for 50% completion)	◆ MS 3.3.5 Complete 50% of excavation and support for all Type 1 Cross Passages(Percentage to be certified for 50% completion)
MS 3.3.6 Complete 100% of excavation and support for all Type 1 Cross Passages(Percentage to be certified for 100% completion)	◆ MS 3.3.6 Complete 100% of excavation and support for all Type 1 Cross Passages(Percentage to be certified for 100% completion)
MS 3.3.7 Complete 50% of excavation and support for all Type 2 Cross Passages(Percentage to be certified for 50% completion)	◆ MS 3.3.7 Complete 50% of excavation and support for all Type 2 Cross Passages(Percentage to be certified for 50% completion)
MS 3.3.8 Complete 100% of excavation and support for all Type 2 Cross Passages(Percentage to be certified for 100% completion)	◆ MS 3.3.8 Complete 100% of excavation and support for all Type 2 Cross Passages(Percentage to be certified for 100% completion)
MS 3.3.9 Complete 50% of permanent lining and internal structures for all Type 1 Cross Passages(Percentage to be certified for 50%)	◆ MS 3.3.9 Complete 50% of permanent lining and internal structures for all Type 1 Cross Passages(Percentage to be certified for 50%)
MS 3.3.10 Complete 100% of permanent lining and internal structures for all Type 1 Cross Passages(Percentage to be certified for 100%)	◆ MS 3.3.10 Complete 100% of permanent lining and internal structures for all Type 1 Cross Passages(Percentage to be certified for 100%)
MS 3.3.11 Complete 50% of permanent lining and internal structures for all Type 2 Cross Passages(Percentage to be certified for 50%)	◆ MS 3.3.11 Complete 50% of permanent lining and internal structures for all Type 2 Cross Passages(Percentage to be certified for 50%)
MS 3.3.12 Complete 100% of permanent lining and internal structures for all Type 2 Cross Passages(Percentage to be certified for 100%)	◆ MS 3.3.12 Complete 100% of permanent lining and internal structures for all Type 2 Cross Passages(Percentage to be certified for 100%)

■ Planned Bar
■ Planned Bar - Critical
◆ Planned Milestone
■ Progress bar
◆ Progress Milestone

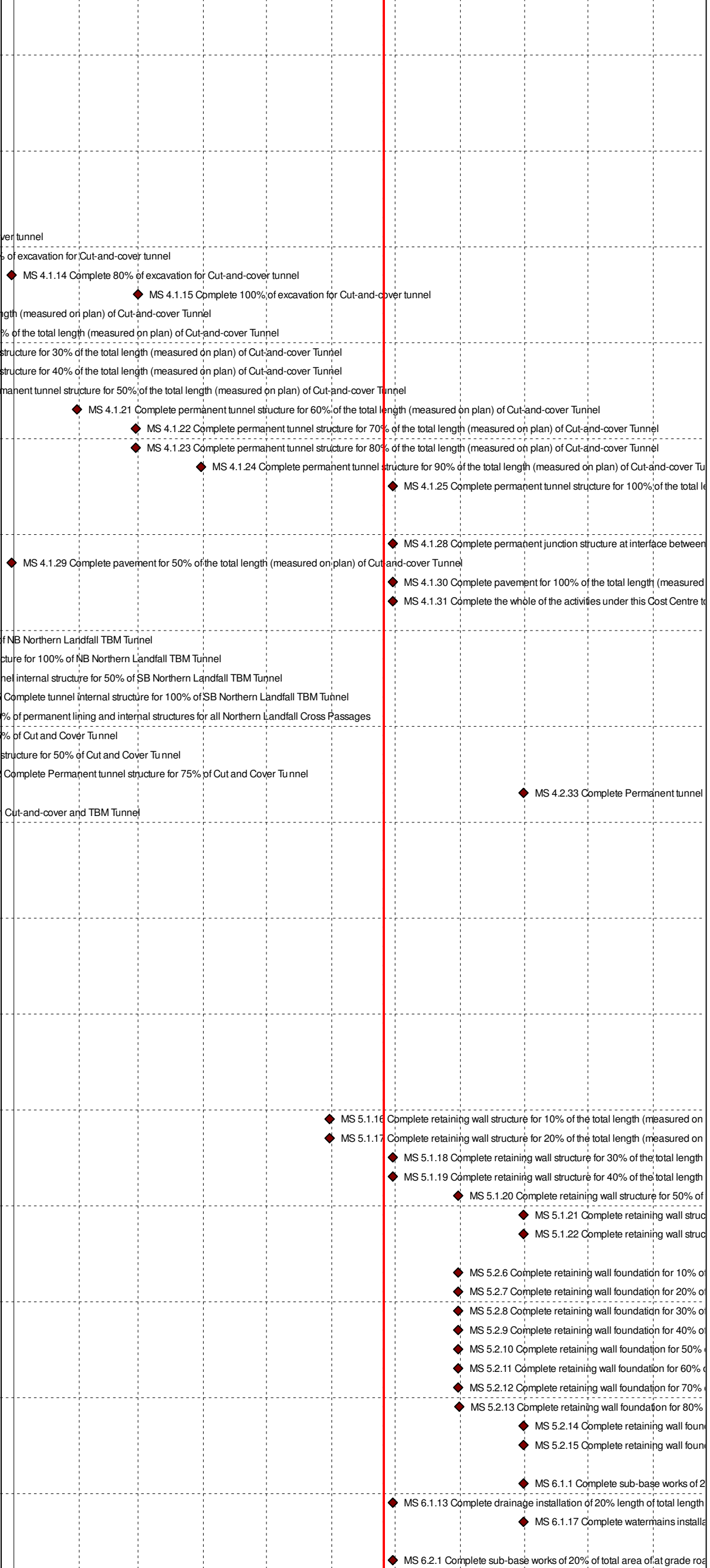


Date	Revision	Checked	Approved
12-Feb-14	TMCLKDBJGEN.PRG.98507	WYu	SP
08-Apr-14	TMCLKDBJGEN.PRG.98507 Rev.B	SP	WYu
28-Aug-14	TMCLKDBJGEN.PRG.98507 Rev.C	CLa	WYu
30-Oct-15	TMCLKDBJGEN.PRG.98507 Rev.F	WYu	

Activity Name

2	2017										
	Jan	Feb	Mar	Apr	May	Jun	Jul	Aug	Sep	Oct	Nov

Cut-and-cover Tunnels at Southern Landfalls	
MS 4.1.1 Complete 10% of total length (measured on plan) of temporary retaining walls for excavation of Cut-	
MS 4.1.2 Complete 20% of total length (measured on plan) of temporary retaining walls for excavation of Cut-	
MS 4.1.3 Complete 30% of total length (measured on plan) of temporary retaining walls for excavation of Cut-	
MS 4.1.4 Complete 40% of total length (measured on plan) of temporary retaining walls for excavation of Cut-	
MS 4.1.5 Complete 50% of total length (measured on plan) of temporary retaining walls for excavation of Cut-	
MS 4.1.6 Complete 60% of total length (measured on plan) of temporary retaining walls for excavation of Cut-	
MS 4.1.7 Complete 70% of total length (measured on plan) of temporary retaining walls for excavation of Cut-	
MS 4.1.8 Complete 80% of total length (measured on plan) of temporary retaining walls for excavation of Cut-	
MS 4.1.9 Complete 90% of total length (measured on plan) of temporary retaining walls for excavation of Cut-	
MS 4.1.10 Complete 100% of total length (measured on plan) of temporary retaining walls for excavation of C	
MS 4.1.11	
MS 4.1.12 Complete 40% of excavation for Cut-and-cover tunnel	ver tunnel
MS 4.1.13 Complete 60% of excavation for Cut-and-cover tunnel	s of excavation for Cut-and-cover tunnel
MS 4.1.14 Complete 80% of excavation for Cut-and-cover tunnel	◆ MS 4.1.14 Complete 80% of excavation for Cut-and-cover tunnel
MS 4.1.15 Complete 100% of excavation for Cut-and-cover tunnel	◆ MS 4.1.15 Complete 100% of excavation for Cut-and-cover tunnel
MS 4.1.16 Complete permanent tunnel structure for 10% of the total length (measured on plan) of Cut-and-cv	gth (measured on plan) of Cut-and-cover Tunnel
MS 4.1.17 Complete permanent tunnel structure for 20% of the total length (measured on plan) of Cut-and-cv	% of the total length (measured on plan) of Cut-and-cover Tunnel
MS 4.1.18 Complete permanent tunnel structure for 30% of the total length (measured on plan) of Cut-and-cv	structure for 30% of the total length (measured on plan) of Cut-and-cover Tunnel
MS 4.1.19 Complete permanent tunnel structure for 40% of the total length (measured on plan) of Cut-and-cv	structure for 40% of the total length (measured on plan) of Cut-and-cover Tunnel
MS 4.1.20 Complete permanent tunnel structure for 50% of the total length (measured on plan) of Cut-and-cv	manent tunnel structure for 50% of the total length (measured on plan) of Cut-and-cover Tunnel
MS 4.1.21 Complete permanent tunnel structure for 60% of the total length (measured on plan) of Cut-and-cv	◆ MS 4.1.21 Complete permanent tunnel structure for 60% of the total length (measured on plan) of Cut-and-cover Tunnel
MS 4.1.22 Complete permanent tunnel structure for 70% of the total length (measured on plan) of Cut-and-cv	◆ MS 4.1.22 Complete permanent tunnel structure for 70% of the total length (measured on plan) of Cut-and-cover Tunnel
MS 4.1.23 Complete permanent tunnel structure for 80% of the total length (measured on plan) of Cut-and-cv	◆ MS 4.1.23 Complete permanent tunnel structure for 80% of the total length (measured on plan) of Cut-and-cover Tunnel
MS 4.1.24 Complete permanent tunnel structure for 90% of the total length (measured on plan) of Cut-and-cv	◆ MS 4.1.24 Complete permanent tunnel structure for 90% of the total length (measured on plan) of Cut-and-cover Tu
MS 4.1.25 Complete permanent tunnel structure for 100% of the total length (measured on plan) of Cut-and-c	◆ MS 4.1.25 Complete permanent tunnel structure for 100% of the total length (measured on plan) of Cut-and-cover Tunnel
MS 4.1.26 Complete excavation for 50% of total length (measured on plan) of all Cross Passages	
MS 4.1.27 Complete excavation for 100% of total length (measured on plan) of all Cross Passages	
MS 4.1.28 Complete permanent junction structure at interface between Cut-and-cover Tunnel and TBM Tunn	◆ MS 4.1.28 Complete permanent junction structure at interface between
MS 4.1.29 Complete pavement for 50% of the total length (measured on plan) of Cut-and-cover Tunnel	◆ MS 4.1.29 Complete pavement for 50% of the total length (measured on plan) of Cut-and-cover Tunnel
MS 4.1.30 Complete pavement for 100% of the total length (measured on plan) of Cut-and-cover Tunnel	◆ MS 4.1.30 Complete pavement for 100% of the total length (measured on plan) of Cut-and-cover Tunnel
MS 4.1.31 Complete the whole of the activities under this Cost Centre to the satisfaction of the Supervising Off	◆ MS 4.1.31 Complete the whole of the activities under this Cost Centre to
Cut-and-cover Tunnel at Northern Landfall	
MS 4.2.22 Complete tunnel internal structure for 50% of NB Northern Landfall TBM Tunnel	of NB Northern Landfall TBM Tunnel
MS 4.2.23 Complete tunnel internal structure for 100% of NB Northern Landfall TBM Tunnel	cture for 100% of NB Northern Landfall TBM Tunnel
MS 4.2.24 Complete tunnel internal structure for 50% of SB Northern Landfall TBM Tunnel	nel internal structure for 50% of SB Northern Landfall TBM Tunnel
MS 4.2.25 Complete tunnel internal structure for 100% of SB Northern Landfall TBM Tunnel	Complete tunnel internal structure for 100% of SB Northern Landfall TBM Tunnel
MS 4.2.29 Complete 100% of permanent lining and internal structures for all Northern Landfall Cross Passag	% of permanent lining and internal structures for all Northern Landfall Cross Passages
MS 4.2.30 Complete Permanent tunnel structure for 25% of Cut and Cover Tunnel	% of Cut and Cover Tunnel
MS 4.2.31 Complete Permanent tunnel structure for 50% of Cut and Cover Tunnel	structure for 50% of Cut and Cover Tunnel
MS 4.2.32 Complete Permanent tunnel structure for 75% of Cut and Cover Tunnel	Complete Permanent tunnel structure for 75% of Cut and Cover Tunnel
MS 4.2.33 Complete Permanent tunnel structure for 100% of Cut and Cover Tunnel	
MS 4.2.34 Complete Permanent junction structure at interface between Cut-and-cover and TBM Tunnel	Cut-and-cover and TBM Tunnel
◆ MS 4.2.33 Complete Permanent tunnel	
Approach Ramp Structures to Cut-and-cover Tunnel at Southern Landfall	
MS 5.1.2 Complete 40% of excavation for approach ramp structures	
MS 5.1.3 Complete 60% of excavation for approach ramp structures	
MS 5.1.4 Complete 80% of excavation for approach ramp structures	
MS 5.1.5 Complete 100% of excavation for approach ramp structures	
MS 5.1.6 Complete retaining wall foundation for 10% of the total length (measured on plan) of approach ramp	
MS 5.1.7 Complete retaining wall foundation for 20% of the total length (measured on plan) of approach ramp	
MS 5.1.8 Complete retaining wall foundation for 30% of the total length (measured on plan) of approach ramp	
MS 5.1.9 Complete retaining wall foundation for 40% of the total length (measured on plan) of approach ramp	
MS 5.1.10 Complete retaining wall foundation for 50% of the total length (measured on plan) of approach ramp	
MS 5.1.11 Complete retaining wall foundation for 60% of the total length (measured on plan) of approach ramp	
MS 5.1.12 Complete retaining wall foundation for 70% of the total length (measured on plan) of approach ramp	
MS 5.1.13 Complete retaining wall foundation for 80% of the total length (measured on plan) of approach ramp	
MS 5.1.14 Complete retaining wall foundation for 90% of the total length (measured on plan) of approach ramp	
MS 5.1.15 Complete retaining wall foundation for 100% of the total length (measured on plan) of approach re	
MS 5.1.16 Complete retaining wall structure for 10% of the total length (measured on plan) of approach ramp	◆ MS 5.1.16 Complete retaining wall structure for 10% of the total length (measured on
MS 5.1.17 Complete retaining wall structure for 20% of the total length (measured on plan) of approach ramp	◆ MS 5.1.17 Complete retaining wall structure for 20% of the total length (measured on
MS 5.1.18 Complete retaining wall structure for 30% of the total length (measured on plan) of approach ramp	◆ MS 5.1.18 Complete retaining wall structure for 30% of the total length
MS 5.1.19 Complete retaining wall structure for 40% of the total length (measured on plan) of approach ramp	◆ MS 5.1.19 Complete retaining wall structure for 40% of the total length
MS 5.1.20 Complete retaining wall structure for 50% of the total length (measured on plan) of approach ramp	◆ MS 5.1.20 Complete retaining wall structure for 50% of
MS 5.1.21 Complete retaining wall structure for 60% of the total length (measured on plan) of approach ramp	◆ MS 5.1.21 Complete retaining wall struc
MS 5.1.22 Complete retaining wall structure for 70% of the total length (measured on plan) of approach ramp	◆ MS 5.1.22 Complete retaining wall struc
Approach Ramp Structures to Cut-and-cover Tunnel at Northern Landfall	
MS 5.2.6 Complete retaining wall foundation for 10% of the total length (measured on plan) of approach ramp	◆ MS 5.2.6 Complete retaining wall foundation for 10% of
MS 5.2.7 Complete retaining wall foundation for 20% of the total length (measured on plan) of approach ramp	◆ MS 5.2.7 Complete retaining wall foundation for 20% of
MS 5.2.8 Complete retaining wall foundation for 30% of the total length (measured on plan) of approach ramp	◆ MS 5.2.8 Complete retaining wall foundation for 30% of
MS 5.2.9 Complete retaining wall foundation for 40% of the total length (measured on plan) of approach ramp	◆ MS 5.2.9 Complete retaining wall foundation for 40% of
MS 5.2.10 Complete retaining wall foundation for 50% of the total length (measured on plan) of approach ramp	◆ MS 5.2.10 Complete retaining wall foundation for 50% of
MS 5.2.11 Complete retaining wall foundation for 60% of the total length (measured on plan) of approach ramp	◆ MS 5.2.11 Complete retaining wall foundation for 60% of
MS 5.2.12 Complete retaining wall foundation for 70% of the total length (measured on plan) of approach ramp	◆ MS 5.2.12 Complete retaining wall foundation for 70% of
MS 5.2.13 Complete retaining wall foundation for 80% of the total length (measured on plan) of approach ramp	◆ MS 5.2.13 Complete retaining wall foundation for 80%
MS 5.2.14 Complete retaining wall foundation for 90% of the total length (measured on plan) of approach ramp	◆ MS 5.2.14 Complete retaining wall found
MS 5.2.15 Complete retaining wall foundation for 100% of the total length (measured on plan) of approach re	◆ MS 5.2.15 Complete retaining wall found
At grade Roads at Southern Landfall	
MS 6.1.1 Complete sub-base works of 20% of total area of at grade roads	◆ MS 6.1.1 Complete sub-base works of 2
MS 6.1.13 Complete drainage installation of 20% length of total length (measured on plan) of drainage pipes	◆ MS 6.1.13 Complete drainage installation of 20% length of total length
MS 6.1.17 Complete watermains installation of 20% length of total length (measured on plan) of watermains	◆ MS 6.1.17 Complete watermains installa
At grade Roads at Northern Landfall	
MS 6.2.1 Complete sub-base works of 20% of total area of at grade roads	◆ MS 6.2.1 Complete sub-base works of 20% of total area of at grade roads



Page 2 of 14
 Project ID: TMCLK DWPF 17W21
 Data Date: 25-Jun-17

■ Planned Bar
■ Planned Bar - Critical
◆ Planned Milestone
■ Progress bar
◆ Progress Milestone

TMCLK - Northern Connection Sub-Sea Tunnel Section
 Detailed Works Programme (Rev. F)
 Three Months Rolling Programme
 Progress as of 25-Jun-17



Date	Revision	Checked	Approved
12-Feb-14	TMCLKDBJGENPRG98507	WYu	SP
08-Apr-14	TMCLKDBJGENPRG98507 Rev.B	SP	WYu
28-Aug-14	TMCLKDBJGENPRG98507 Rev.C	CLa	WYu
30-Oct-15	TMCLKDBJGENPRG98507 Rev.F	WYu	

Activity Name	2017										
	Jan	Feb	Mar	Apr	May	Jun	Jul	Aug	Sep	Oct	Nov
MS 6.2.5 Complete pavement of 20% of total area of at grade roads								◆ MS 6.2.5 Complete pavement of 20% of total area of at			
MS 6.2.13 Complete drainage installation of 20% length of total length (measured on plan) of drainage pipes				◆ MS 6.2.13 Complete drainage installation of 20% length of total length (measured on plan) of drainage pipes							
MS 6.2.14 Complete drainage installation of 50% length of total length (measured on plan) of drainage pipes									◆ MS 6.2.14 Complete drainage installati		
MS 6.2.17 Complete sewerage installation of 20% length of total length (measured on plan) of sewerage pipe				◆ MS 6.2.17 Complete sewerage installation of 20% length of total length (measured on plan) of sewerage pipes							
MS 6.2.18 Complete sewerage installation of 50% length of total length (measured on plan) of sewerage pipe									◆ MS 6.2.18 Complete sewerage installati		
MS 6.2.21 Complete watermain installation of 20% length of total length (measured on plan) of watermain						◆ MS 6.2.21 Complete watermain installation of 20% length of total length (measured o					
South Ventilation Buildings											
MS 7.1.1 Complete 100% of cofferdam for excavation											
MS 7.1.2 Complete 100% of excavation to the formation level											
MS 7.1.3 Complete 100% of foundation for the ventilation building											
MS 7.1.4 Complete concreting works of 25% area of the total construction floor area for the ventilation building											
MS 7.1.5 Complete concreting works of 50% area of the total construction floor area for the ventilation building				◆ MS 7.1.5 Complete concreting works of 50% area of the total construction floor area for the ventilation building							
MS 7.1.6 Complete concreting works of 75% area of the total construction floor area for the ventilation building					◆ MS 7.1.6 Complete concreting works of 75% area of the total construction floor area for the ventilation building						
MS 7.1.7 Complete concreting works of 100% area of the total construction floor area for the ventilation building						◆ MS 7.1.7 Complete concreting works of 100% area of the total construction floor area for the ventilation building					
MS 7.1.9 Complete 100% of drainage, watermain and utilities connection works for the ventilation building									◆ MS 7.1.9 Complete 100% of drainage, v		
North Ventilation Buildings											
MS 7.2.4 Complete concreting works of 25% area of the total construction floor area for the ventilation building											
MS 7.2.5 Complete concreting works of 50% area of the total construction floor area for the ventilation building											
MS 7.2.6 Complete concreting works of 75% area of the total construction floor area for the ventilation building				◆ MS 7.2.6 Complete concreting works of 75% area of the total construction floor area for the ventilation building							
MS 7.2.7 Complete concreting works of 100% area of the total construction floor area for the ventilation building						◆ MS 7.2.7 Complete concreting works of 100% area of the total construction floor area for the ventilation building					
MS 7.2.9 Complete 100% of drainage, watermain and utilities connection works for the ventilation building									◆ MS 7.2.9 Complete 100% of drainage, v		
Facilities Provision for TCSS for At Grade Roads at Southern Landfall											
MS 8.1.5 Complete 25% of support foundation, ductings, drawpits for at grade roads									◆ MS 8.1.5 Complete 25% of support found		
Facilities Provision for TCSS for At Grade Roads at Northern Landfall											
MS 8.2.5 Complete 25% of support foundation, ductings, drawpits for at grade roads								◆ MS 8.2.5 Complete 25% of support foundation, ductings, drawpits for a			
Facilities Provision for E&M Works for TBM Tunnel, Cut & Cover Tunnels and Ci											
MS 9.1.1 Complete 25% of bonding terminal, opening and accessories, etc.											
MS 9.1.2 Complete 25% of plinth, hoisting facilities and accessories, etc.											
MS 9.1.3 Complete 50% of bonding terminal, opening and accessories, etc.				◆ MS 9.1.3 Complete 50% of bonding terminal, opening and accessories, etc.							
MS 9.1.4 Complete 50% of plinth, hoisting facilities and accessories, etc.				◆ MS 9.1.4 Complete 50% of plinth, hoisting facilities and accessories, etc.							
MS 9.1.5 Complete 75% of bonding terminal, opening and accessories, etc.						◆ MS 9.1.5 Complete 75% of bonding terminal, opening and accessories, etc.					
MS 9.1.6 Complete 75% of plinth, hoisting facilities and accessories, etc.						◆ MS 9.1.6 Complete 75% of plinth, hoisting facilities and accessories, etc.					
MS 9.1.7 Complete 95% of bonding terminal, opening and accessories, etc.									◆ MS 9.1.7 Complete 95% of bonding terr		
MS 9.1.8 Complete 95% of plinth, hoisting facilities and accessories, etc.									◆ MS 9.1.8 Complete 95% of plinth, hoistin		
Facilities Provision for E&M Works for South Ventilation Building											
MS 9.4.1 Complete 25% of bonding terminal, main earth mat, clean earth mat, earth pit, lightning pit, conceal									◆ MS 9.4.1 Complete 25% of bonding terminal, main earth mat, clean earth mat, earth p		
MS 9.4.2 Complete 25% of plinth, hoisting facilities, louver, wire mesh and accessories, etc.									◆ MS 9.4.2 Complete 25% of plinth, hoisting facilities, louver, wire mesh and accessories		
MS 9.4.3 Complete 25% of floor drain, water tank and accessories, etc.									◆ MS 9.4.3 Complete 25% of floor drain, water tank and accessories, etc.		
MS 9.4.4 Complete 50% of bonding terminal, main earth mat, clean earth mat, earth pit, lightning pit, conceal									◆ MS 9.4.4 Complete 50% of bonding terminal, main earth		
MS 9.4.5 Complete 50% of plinth, hoisting facilities, louver, wire mesh and accessories, etc.									◆ MS 9.4.5 Complete 50% of plinth, hoisting facilities, louv		
MS 9.4.6 Complete 50% of floor drain, water tank and accessories, etc.									◆ MS 9.4.6 Complete 50% of floor drain, water tank and a		
MS 9.4.7 Complete 75% of bonding terminal, main earth mat, clean earth mat, earth pit, lightning pit, conceal									◆ MS 9.4.7 Complete 75% of bonding terr		
MS 9.4.8 Complete 75% of plinth, hoisting facilities, louver, wire mesh and accessories, etc.									◆ MS 9.4.8 Complete 75% of plinth, hoistin		
MS 9.4.9 Complete 75% of floor drain, water tank and accessories, etc.									◆ MS 9.4.9 Complete 75% of floor drain, w		
Facilities Provision for E&M Works for North Ventilation Building											
MS 9.5.1 Complete 25% of bonding terminal, main earth mat, clean earth mat, earth pit, lightning pit, conceal									◆ MS 9.5.1 Complete 25% of bonding terminal, main earth mat, clean earth mat, earth pit, lightning pit, c		
MS 9.5.2 Complete 25% of plinth, hoisting facilities, louver, wire mesh and accessories, etc.									◆ MS 9.5.2 Complete 25% of plinth, hoisting facilities, louver, wire mesh and accessories, etc.		
MS 9.5.3 Complete 25% of floor drain, water tank and accessories, etc.									◆ MS 9.5.3 Complete 25% of floor drain, water tank and accessories, etc.		
MS 9.5.4 Complete 50% of bonding terminal, main earth mat, clean earth mat, earth pit, lightning pit, conceal									◆ MS 9.5.4 Complete 50% of bonding terminal, main earth mat, clean ea		
MS 9.5.5 Complete 50% of plinth, hoisting facilities, louver, wire mesh and accessories, etc.									◆ MS 9.5.5 Complete 50% of plinth, hoisting facilities, louver, wire mesh a		
MS 9.5.6 Complete 50% of floor drain, water tank and accessories, etc.									◆ MS 9.5.6 Complete 50% of floor drain, water tank and accessories, etc.		
MS 9.5.7 Complete 75% of bonding terminal, main earth mat, clean earth mat, earth pit, lightning pit, conceal									◆ MS 9.5.7 Complete 75% of bonding terminal, main earth		
MS 9.5.8 Complete 75% of plinth, hoisting facilities, louver, wire mesh and accessories, etc.									◆ MS 9.5.8 Complete 75% of plinth, hoisting facilities, louv		
MS 9.5.9 Complete 75% of floor drain, water tank and accessories, etc.									◆ MS 9.5.9 Complete 75% of floor drain, water tank and a		

Page 3 of 14

Project ID: TMCLK DWPF 17W21


Data Date: 25-Jun-17

TMCLK - Northern Connection Sub-Sea Tunnel Section

Detailed Works Programme (Rev. F)

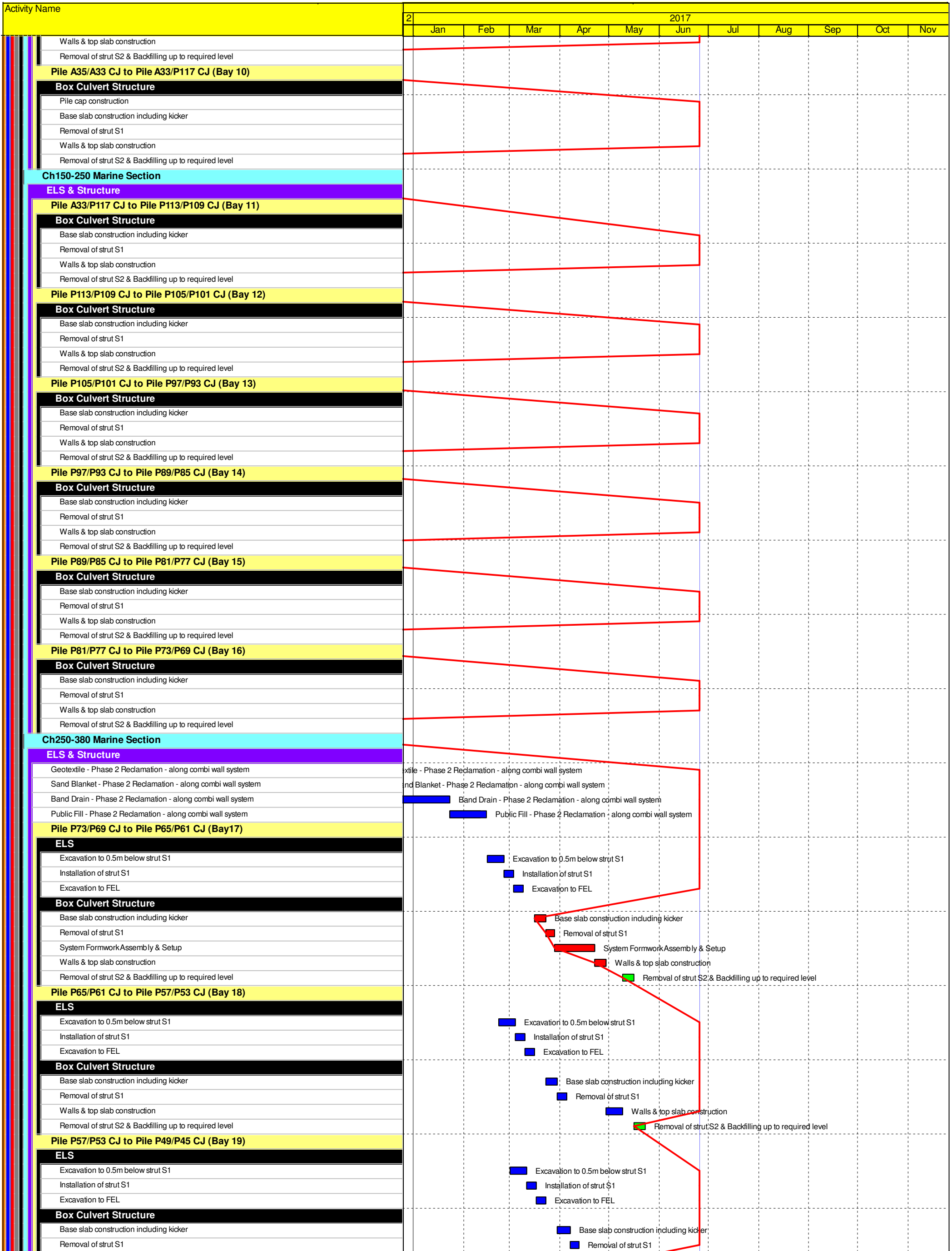
Three Months Rolling Programme

Progress as of 25-Jun-17



Date	Revision	Checked	Approved
12-Feb-14	TMCLKDBJGEN.PRG.98507	WYu	SP
08-Apr-14	TMCLKDBJGEN.PRG.98507 Rev.B	SP	WYu
28-Aug-14	TMCLKDBJGEN.PRG.98507 Rev.C	CLa	WYu
30-Oct-15	TMCLKDBJGEN.PRG.98507 Rev.F	WYu	

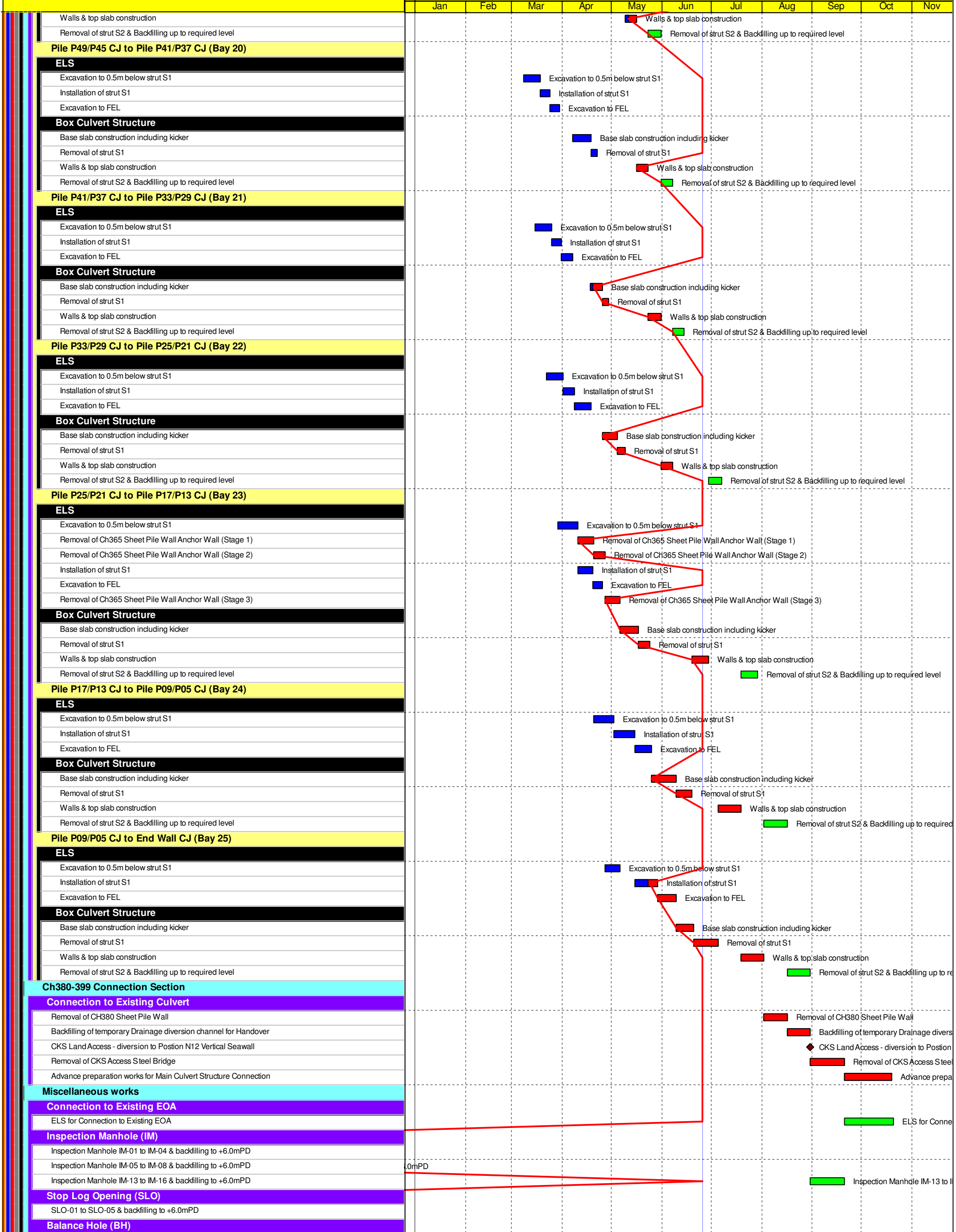
	Planned Bar
	Planned Bar - Critical
	Planned Milestone
	Progress bar
	Progress Milestone

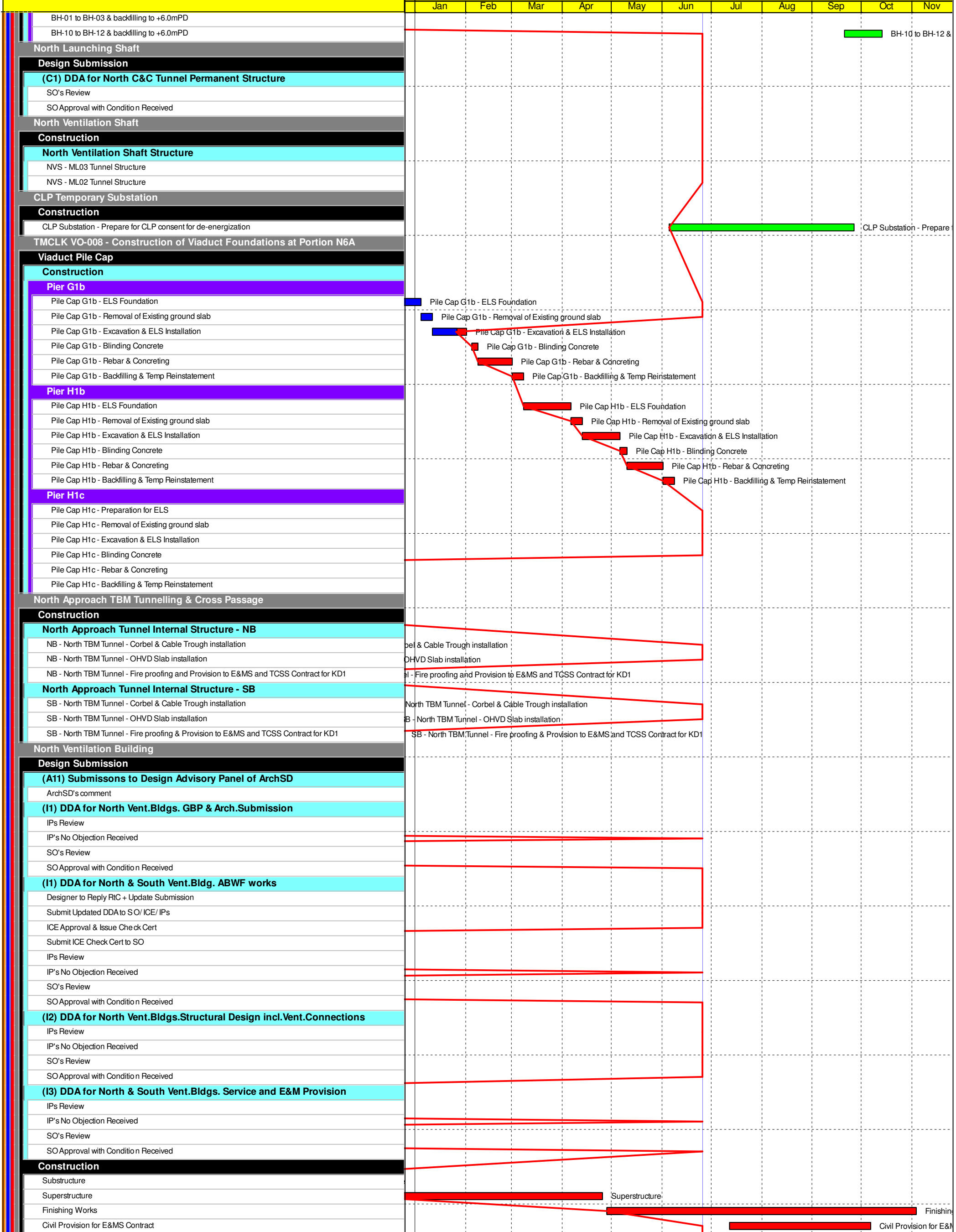


- Planned Bar
- Planned Bar - Critical
- Progress bar
- ◆ Planned Milestone
- ◆ Progress Milestone



Date	Revision	Checked	Approved
12-Feb-14	TMCLKDBJGEN.PRG.98507	WYu	SPa
08-Apr-14	TMCLKDBJGEN.PRG.98507 Rev.B	SPa	WYu
28-Aug-14	TMCLKDBJGEN.PRG.98507 Rev.C	CLa	WYu
30-Oct-15	TMCLKDBJGEN.PRG.98507 Rev.F	WYu	

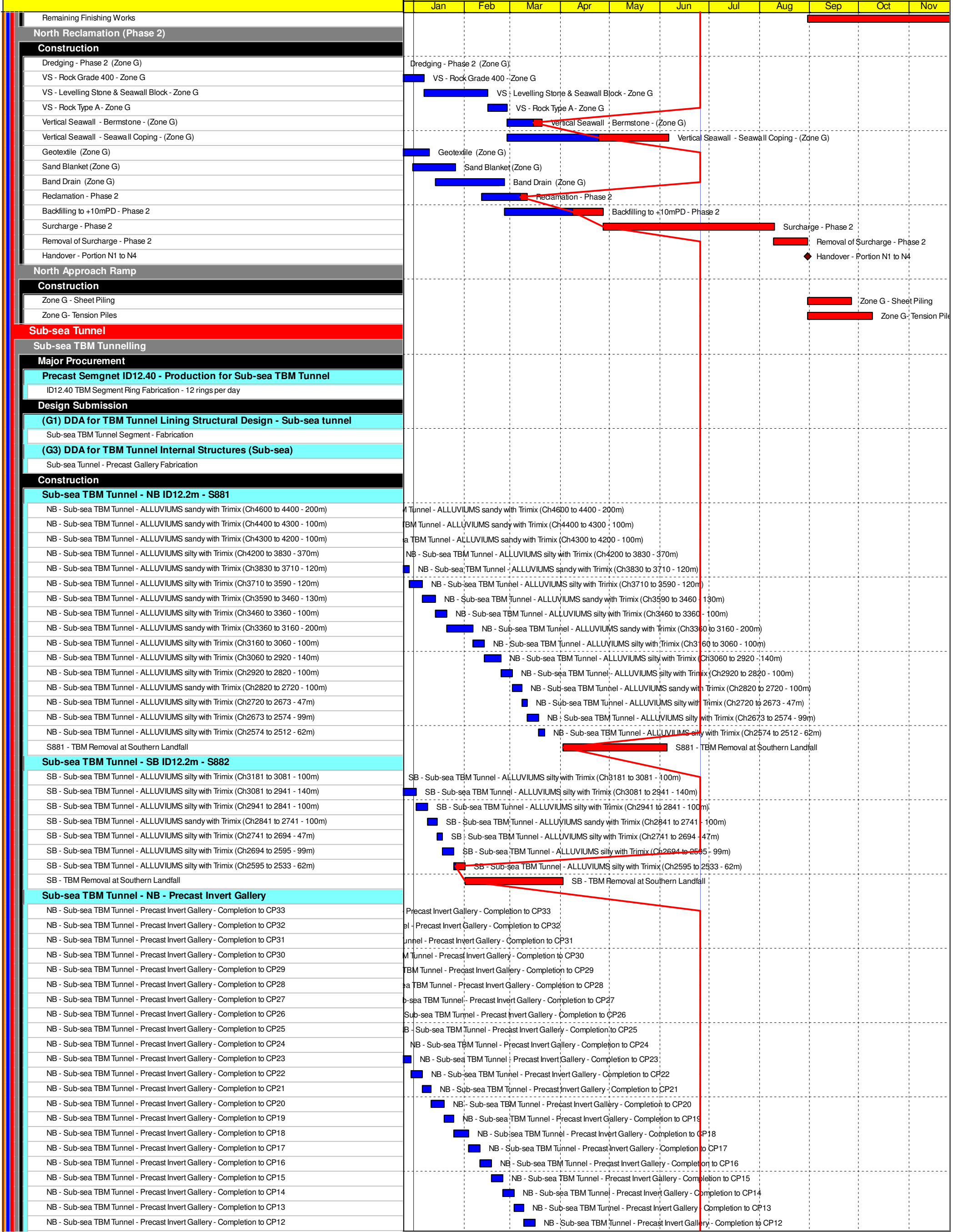




- Planned Bar
- Planned Bar - Critical
- ◆ Planned Milestone
- Progress bar
- ◆ Progress Milestone



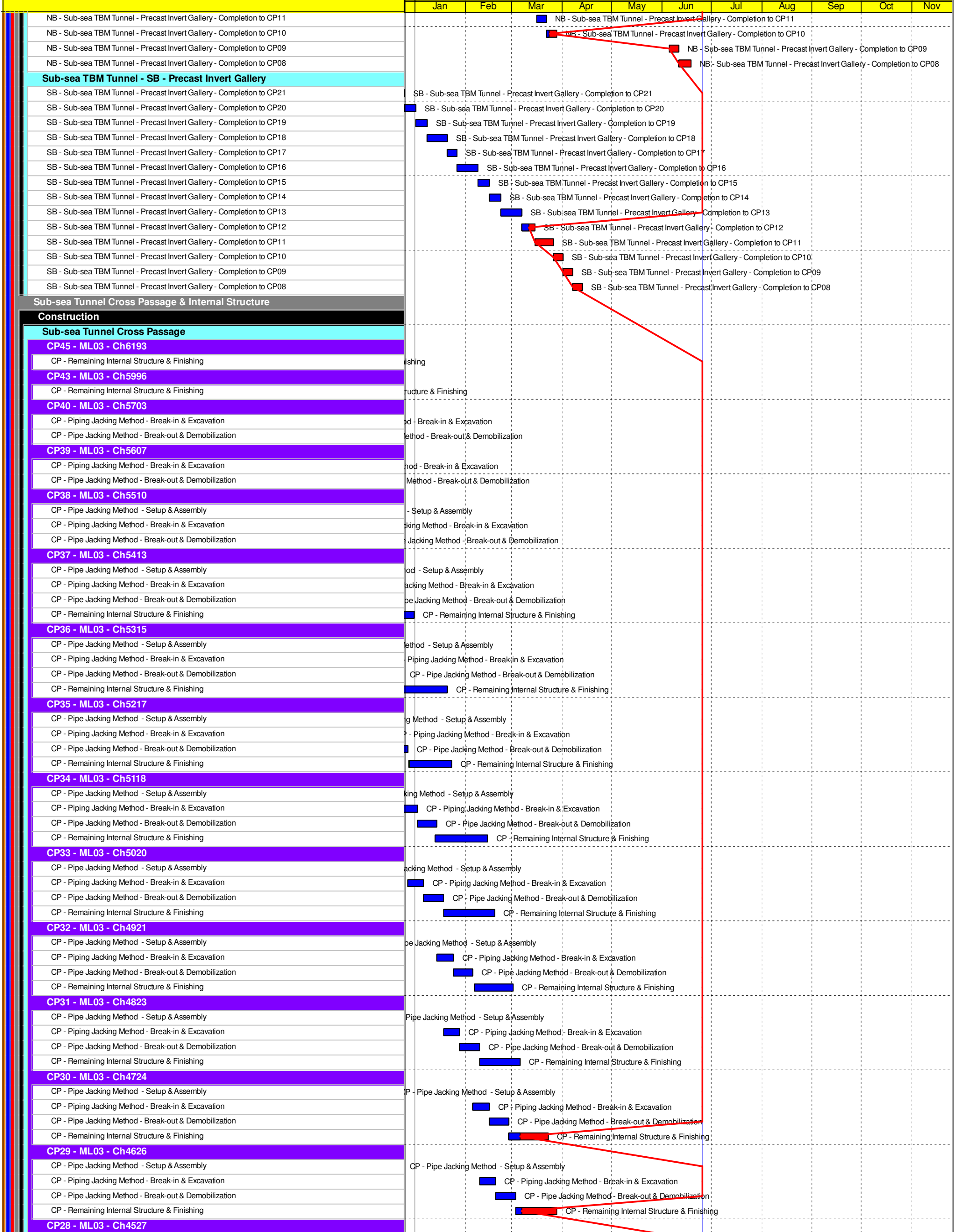
Date	Revision	Checked	Approved
12-Feb-14	TMCLKDBJGENPRG98507	WYu	SPH
08-Apr-14	TMCLKDBJGENPRG98507 Rev.B	SPH	WYu
28-Aug-14	TMCLKDBJGENPRG98507 Rev.C	CLa	WYu
30-Oct-15	TMCLKDBJGENPRG98507 Rev.F	WYu	



■ Planned Bar
■ Planned Bar - Critical
◆ Planned Milestone
■ Progress bar
◆ Progress Milestone



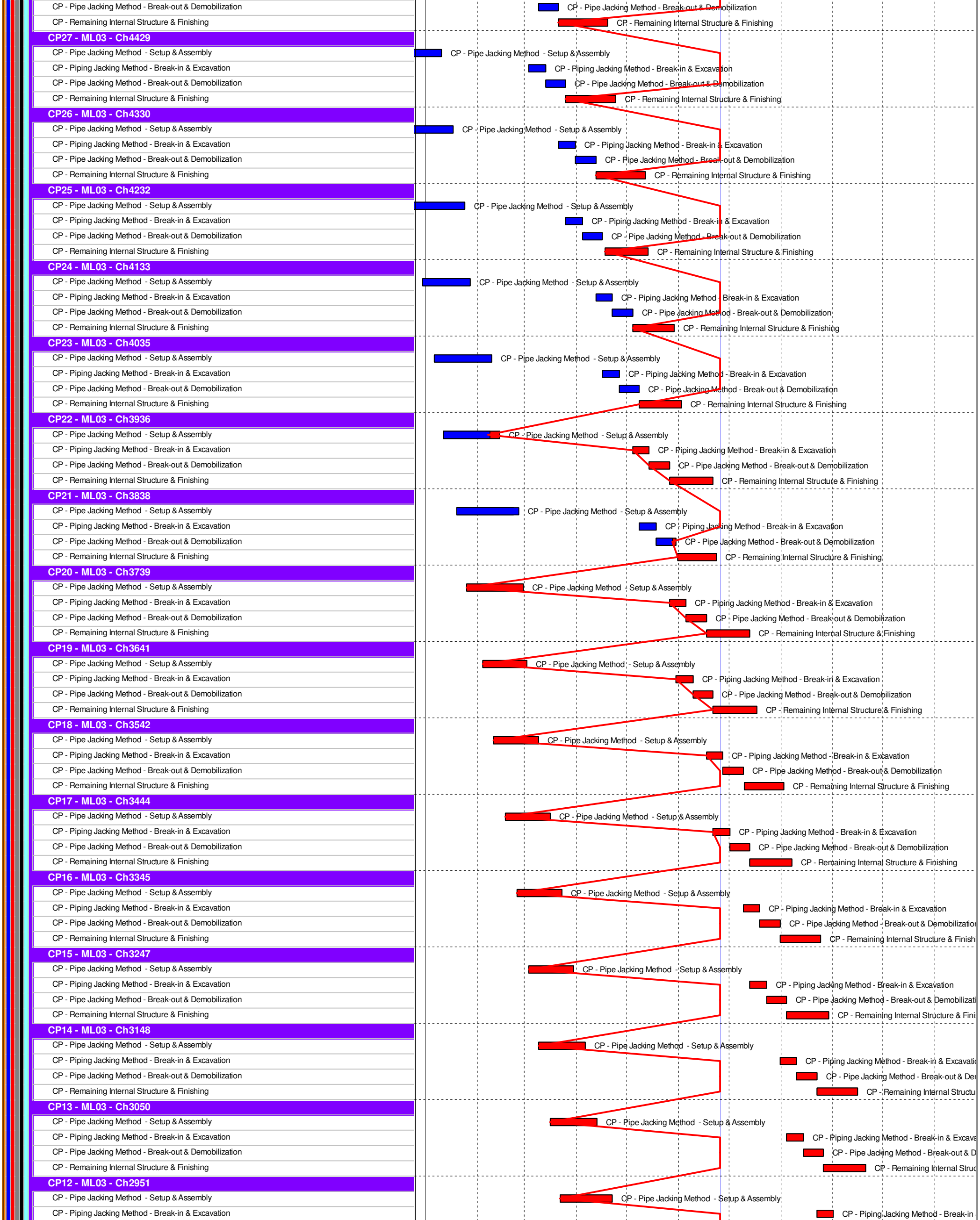
Date	Revision	Checked	Approved
12-Feb-14	TMCLKDBJGEN.PRG.98507	WYu	SP
08-Apr-14	TMCLKDBJGEN.PRG.98507 Rev.B	SP	WYu
28-Aug-14	TMCLKDBJGEN.PRG.98507 Rev.C	CLa	WYu
30-Oct-15	TMCLKDBJGEN.PRG.98507 Rev.F	WYu	



- Planned Bar
- Planned Bar - Critical
- ◆ Planned Milestone
- Progress bar
- ◆ Progress Milestone



Date	Revision	Checked	Approved
12-Feb-14	TMCLKDBJGEN.PRG.98507	WYu	SP
08-Apr-14	TMCLKDBJGEN.PRG.98507 Rev.B	SP	WYu
28-Aug-14	TMCLKDBJGEN.PRG.98507 Rev.C	CLa	WYu
30-Oct-15	TMCLKDBJGEN.PRG.98507 Rev.F	WYu	





- Planned Bar
- Planned Bar - Critical
- ◆ Planned Milestone
- Progress bar
- ◆ Progress Milestone

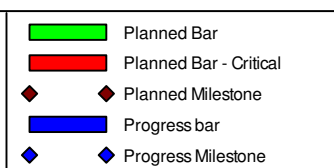
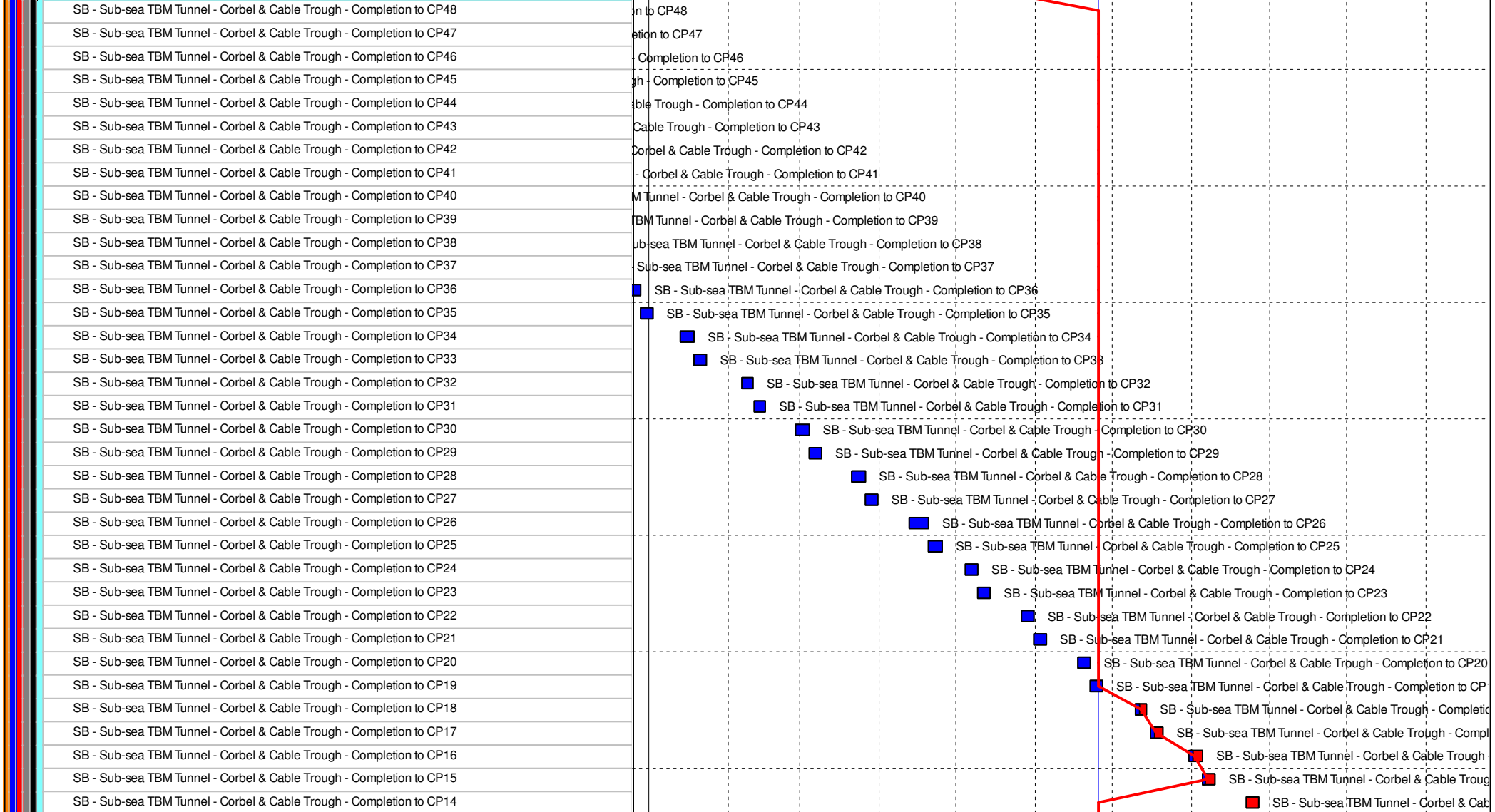
TMCLK - Northern Connection Sub-Sea Tunnel Section
Detailed Works Programme (Rev. F)
Three Months Rolling Programme
Progress as of 25-Jun-17



Date	Revision	Checked	Approved
12-Feb-14	TMCLKDBJGENPRG98507	WYu	SP
08-Apr-14	TMCLKDBJGENPRG98507 Rev.B	SP	WYu
28-Aug-14	TMCLKDBJGENPRG98507 Rev.C	CLa	WYu
30-Oct-15	TMCLKDBJGENPRG98507 Rev.F	WYu	



Sub-sea TBM Tunnel - SB - Remaining Internal Structure



Date	Revision	Checked	Approved
12-Feb-14	TMCLKDBJGENPRG98507	WYu	SP
08-Apr-14	TMCLKDBJGENPRG98507 Rev.B	SP	WYu
28-Aug-14	TMCLKDBJGENPRG98507 Rev.C	CLa	WYu
30-Oct-15	TMCLKDBJGENPRG98507 Rev.F	WYu	

Activity Name	2017											
	Jan	Feb	Mar	Apr	May	Jun	Jul	Aug	Sep	Oct	Nov	
SB - Sub-sea TBM Tunnel - Corbel & Cable Trough - Completion to CP13												■
SB - Sub-sea TBM Tunnel - Corbel & Cable Trough - Completion to CP12												■
SB - Sub-sea TBM Tunnel - Corbel & Cable Trough - Completion to CP11												■
SB - Sub-sea TBM Tunnel - OHVD Slab installation - Completion to CP48												■
SB - Sub-sea TBM Tunnel - OHVD Slab installation - Completion to CP47												■
SB - Sub-sea TBM Tunnel - OHVD Slab installation - Completion to CP46												■
SB - Sub-sea TBM Tunnel - OHVD Slab installation - Completion to CP45												■
SB - Sub-sea TBM Tunnel - OHVD Slab installation - Completion to CP44												■
SB - Sub-sea TBM Tunnel - OHVD Slab installation - Completion to CP43												■
SB - Sub-sea TBM Tunnel - OHVD Slab installation - Completion to CP42												■
SB - Sub-sea TBM Tunnel - OHVD Slab installation - Completion to CP41												■
SB - Sub-sea TBM Tunnel - OHVD Slab installation - Completion to CP40												■
SB - Sub-sea TBM Tunnel - OHVD Slab installation - Completion to CP39												■
SB - Sub-sea TBM Tunnel - OHVD Slab installation - Completion to CP38												■
SB - Sub-sea TBM Tunnel - OHVD Slab installation - Completion to CP37												■
SB - Sub-sea TBM Tunnel - OHVD Slab installation - Completion to CP36												■
SB - Sub-sea TBM Tunnel - OHVD Slab installation - Completion to CP35												■
SB - Sub-sea TBM Tunnel - OHVD Slab installation - Completion to CP34												■
SB - Sub-sea TBM Tunnel - OHVD Slab installation - Completion to CP33												■
SB - Sub-sea TBM Tunnel - OHVD Slab installation - Completion to CP32												■
SB - Sub-sea TBM Tunnel - OHVD Slab installation - Completion to CP31												■
SB - Sub-sea TBM Tunnel - OHVD Slab installation - Completion to CP30												■
SB - Sub-sea TBM Tunnel - OHVD Slab installation - Completion to CP29												■
SB - Sub-sea TBM Tunnel - OHVD Slab installation - Completion to CP28												■
SB - Sub-sea TBM Tunnel - OHVD Slab installation - Completion to CP27												■
SB - Sub-sea TBM Tunnel - OHVD Slab installation - Completion to CP26												■
SB - Sub-sea TBM Tunnel - OHVD Slab installation - Completion to CP25												■
SB - Sub-sea TBM Tunnel - OHVD Slab installation - Completion to CP24												■
SB - Sub-sea TBM Tunnel - OHVD Slab installation - Completion to CP23												■
SB - Sub-sea TBM Tunnel - OHVD Slab installation - Completion to CP22												■
SB - Sub-sea TBM Tunnel - OHVD Slab installation - Completion to CP21												■
SB - Sub-sea TBM Tunnel - OHVD Slab installation - Completion to CP20												■
SB - Sub-sea TBM Tunnel - OHVD Slab installation - Completion to CP19												■
SB - Sub-sea TBM Tunnel - OHVD Slab installation - Completion to CP18												■
SB - Sub-sea TBM Tunnel - OHVD Slab installation - Completion to CP17												■
SB - Sub-sea TBM Tunnel - OHVD Slab installation - Completion to CP16												■
SB - Sub-sea TBM Tunnel - OHVD Slab installation - Completion to CP15												■
SB - Sub-sea TBM Tunnel - OHVD Slab installation - Completion to CP14												■
SB - Sub-sea TBM Tunnel - OHVD Slab installation - Completion to CP13												■
SB - Sub-sea TBM Tunnel - OHVD Slab installation - Completion to CP12												■
SB - Sub-sea TBM Tunnel - OHVD Slab installation - Completion to CP11												■

SB - Sub-sea TBM Tunnel - Fire Proofing - Completion to CP48												■
SB - Sub-sea TBM Tunnel - Fire Proofing - Completion to CP47												■
SB - Sub-sea TBM Tunnel - Fire Proofing - Completion to CP46												■
SB - Sub-sea TBM Tunnel - Fire Proofing - Completion to CP45												■
SB - Sub-sea TBM Tunnel - Fire Proofing - Completion to CP44												■
SB - Sub-sea TBM Tunnel - Fire Proofing - Completion to CP43												■
SB - Sub-sea TBM Tunnel - Fire Proofing - Completion to CP42												■
SB - Sub-sea TBM Tunnel - Fire Proofing - Completion to CP41												■
SB - Sub-sea TBM Tunnel - Fire Proofing - Completion to CP40												■
SB - Sub-sea TBM Tunnel - Fire Proofing - Completion to CP39												■
SB - Sub-sea TBM Tunnel - Fire Proofing - Completion to CP38												■
SB - Sub-sea TBM Tunnel - Fire Proofing - Completion to CP37												■
SB - Sub-sea TBM Tunnel - Fire Proofing - Completion to CP36												■
SB - Sub-sea TBM Tunnel - Fire Proofing - Completion to CP35												■
SB - Sub-sea TBM Tunnel - Fire Proofing - Completion to CP34												■
SB - Sub-sea TBM Tunnel - Fire Proofing - Completion to CP33												■
SB - Sub-sea TBM Tunnel - Fire Proofing - Completion to CP32												■
SB - Sub-sea TBM Tunnel - Fire Proofing - Completion to CP31												■
SB - Sub-sea TBM Tunnel - Fire Proofing - Completion to CP30												■
SB - Sub-sea TBM Tunnel - Fire Proofing - Completion to CP29												■
SB - Sub-sea TBM Tunnel - Fire Proofing - Completion to CP28												■
SB - Sub-sea TBM Tunnel - Fire Proofing - Completion to CP27												■
SB - Sub-sea TBM Tunnel - Fire Proofing - Completion to CP26												■
SB - Sub-sea TBM Tunnel - Fire Proofing - Completion to CP25												■
SB - Sub-sea TBM Tunnel - Fire Proofing - Completion to CP24												■
SB - Sub-sea TBM Tunnel - Fire Proofing - Completion to CP23												■
SB - Sub-sea TBM Tunnel - Fire Proofing - Completion to CP22												■
SB - Sub-sea TBM Tunnel - Fire Proofing - Completion to CP21												■
SB - Sub-sea TBM Tunnel - Fire Proofing - Completion to CP20												■
SB - Sub-sea TBM Tunnel - Fire Proofing - Completion to CP19												■
SB - Sub-sea TBM Tunnel - Fire Proofing - Completion to CP18												■
SB - Sub-sea TBM Tunnel - Fire Proofing - Completion to CP17												■
SB - Sub-sea TBM Tunnel - Fire Proofing - Completion to CP16												■
SB - Sub-sea TBM Tunnel - Fire Proofing - Completion to CP15												■
SB - Sub-sea TBM Tunnel - Fire Proofing - Completion to CP14												■
SB - Sub-sea TBM Tunnel - Fire Proofing - Completion to CP13												■
SB - Sub-sea TBM Tunnel - Fire Proofing - Completion to CP12												■
SB - Remaining Fire Proofing in Tunnel												■

Southern Landfall
South Cut & Cover Tunnel
Design Submission

- Planned Bar
- Planned Bar - Critical
- ◆ Planned Milestone
- Progress bar
- ◆ Progress Milestone

TMCLK - Northern Connection Sub-Sea Tunnel Section
 Detailed Works Programme (Rev. F)
 Three Months Rolling Programme
 Progress as of 25-Jun-17



Date	Revision	Checked	Approved
12-Feb-14	TMCLKDBJGENPRG98507	WYu	SP
08-Apr-14	TMCLKDBJGENPRG98507 Rev.B	SP	WYu
28-Aug-14	TMCLKDBJGENPRG98507 Rev.C	CLa	WYu
30-Oct-15	TMCLKDBJGENPRG98507 Rev.F	WYu	

(E2) DDA for South C&C Box & Approach Ramp											
Review & Comment by JV											
Designer prepare DDA											
Formal Submission of DDA to ICE/ IPs											
Advanced Submission to SO											
IPs/ SO's Advance Comments/ ICE Comments											
Comments Received											
Designer to Reply RtC + Update Submission											
Submit Updated DDA to SO/ ICE/ IPs											
ICE Approval & Issue Check Cert											
Submit ICE Check Cert to SO											
IPs Review											
SO's Review											
Method Statement Submission											
Method Statement of Construction Methodology of C&C Tunnels											
Preparation Method Statement for C&C Tunnels											
Submit Method Statement to SO											
SO Reviews & Comments											
Re-submission											
SO's Review											
Construction											
Provision for TCSS/E&M for Stage 2											Provision for TCSS/E&M fo
South Retrieval Shaft											
Design Submission											
(F4) Gantry Crane Support/Foundations in Southern Landfall											
Designer to Reply RtC + Update Submission											
Submit Updated IFA to SO/ ICE/ IPs											
ICE Approval & Issue Check Cert											
IPs Review											
IP's No Objection Received											
SO's Review											
SO Approval with Condition Received											
Method Statement Submission											
Method Statement of Construction Methodology of Retrieval Shaft											
Preparation Method Statement for Retrieval Shaft											
Submit Method Statement to SO											
SO Reviews & Comments											
Re-submission											
SO's Review											
Construction											
Retrieval Shaft - Excavation - Soft by ramp											
Retrieval Shaft - Excavation - Soft by vertical mean (Fill material)											
Retrieval Shaft - Excavation - Soft (other than Fill)											
Retrieval Shaft - Temp. Slab/Prepare for TBM Breakthrough											
Retrieval Shaft - Mobilization for Retrieval Shaft Tunnel Structure											Retrieval Shaft - Mobilization for Retrieval Shaft Tunnel Structure
Retrieval Shaft - Tunnel Structure											
South Ventilation Building											
Design Submission											
(I1) DDA for South Vent.Bldg. GBP & Arch.Submission											
IPs Review											
IP's No Objection Received											
SO's Review											
SO Approval with Condition Received											
(I2) DDA for South Vent.Bldg. Foundation Design											
Review & Comment by JV											
Designer prepare DDA											
Formal Submission of DDA to ICE/ IPs											
Advanced Submission to SO											
IPs/ SO's Advance Comments/ ICE Comments											
Comments Received											
Designer to Reply RtC + Update Submission											
Submit Updated DDA to SO/ ICE/ IPs											
ICE Approval & Issue Check Cert											
Submit ICE Check Cert to SO											
IPs Review											
SO's Review											
(I2) DDA for South Vent.Bldg.Structural Design incl.Vent.Connections											
Review & Comment by JV											
Designer prepare DDA											
Formal Submission of DDA to ICE/ IPs											
Advanced Submission to SO											
IPs/ SO's Advance Comments/ ICE Comments											
Comments Received											
Designer to Reply RtC + Update Submission											
Submit Updated DDA to SO/ ICE/ IPs											
ICE Approval & Issue Check Cert											
IPs Review											
SO's Review											
(J1) DDA Temp.works for Construction of Sth.Vent.Bldg.											
Designer to Reply RtC + Update Submission											
Submit Updated DDA to SO/ ICE/ IPs											
ICE Approval & Issue Check Cert											

