

Appendix K

Cumulative Statistics on  
Exceedances, Complaints,  
Notifications of Summons  
and Successful Prosecutions

**Table K1** *Cumulative Statistics on Exceedances*

Parameters	Level of Exceedance	Total No. recorded in this reporting month	Total No. recorded since project commencement
1-hr TSP	Action	3	33
	Limit	0	2
24-hr TSP	Action	0	5
	Limit	0	1
Water Quality	Action	0	6
	Limit	0	1
Impact Dolphin Monitoring	Action	0	9
	Limit	0	9

**Table K2** *Cumulative Statistics on Complaints, Notifications of Summons and Successful Prosecutions*

Reporting Period	Cumulative Statistics		
	Complaints	Notifications of Summons	Successful Prosecutions
This Reporting Month (July 2017)	0	0	0
Total No. received since project commencement	14	1	0

Email  
message

Environmental  
Resources  
Management

**To** Ramboll Environ - Hong Kong, Limited (ENPO)

16/F Berkshire House,  
25 Westlands Road  
Quarry Bay, Hong Kong  
Telephone: (852) 2271 3113  
Facsimile: (852) 2723 5660  
E-mail: jovy.tam@erm.com

**From** ERM- Hong Kong, Limited

**Ref/Project number** Contract No. HY/2012/08 Tuen Mun-Chek Lap  
Kok Link-Northern Connection Sub-sea Tunnel  
Section

**Subject** Notification of Exceedance for Air Quality  
Impact Monitoring



**ERM**

**Date** 29 July 2017

---

Dear Sir or Madam,

Please find attached the Notification of Exceedance (NOE) of the following  
Log no.:

0212330\_29July2017\_1hrTSP\_Station ASR10

0212330\_29July2017\_1hrTSP\_Station ASR5

0212330\_29July2017\_1hrTSP\_Station ASR6

A total of three Action Level Exceedances were recorded on 29 July 2017.

Regards,

A handwritten signature in black ink, appearing to read 'Jovy Tam', is positioned above the printed name.

Mr Jovy Tam  
Environmental Team Leader

---

**CONFIDENTIALITY NOTICE**

This facsimile transmission is intended only for the use of the addressee and is confidential. If you are not the addressee it may be unlawful for you to read, copy, distribute, disclose or otherwise use the information in this facsimile. If you are not the intended recipient, please telephone or fax us.

---



ERM-Hong Kong, Limited

CONTRACT NO. HY/2012/08  
 TUEN MUN – CHEK LAP KOK LINK –  
 NORTHERN CONNECTION SUB-SEA TUNNEL SECTION

Air Quality Impact Monitoring  
 Notification of Exceedance

Log No.	0212330_29July2017_1hrTSP_Station ASR10 0212330_29July2017_1hrTSP_Station ASR5 0212330_29July2017_1hrTSP_Station ASR6 [Total No. of Exceedances = 3]	
Date	29 July 2017 (Measured) 7 August 2017 (Laboratory results received by ERM)	
Monitoring Station	ASR1, ASR5, ASR6, ASR10 and AQMS1	
Parameter(s) with Exceedance(s)	1-hr TSP	
Action Levels	1-hr TSP ( $\mu\text{g}/\text{m}^3$ )	ASR10 = 337 ASR5 = 340 ASR6 = 338
	24-hr TSP ( $\mu\text{g}/\text{m}^3$ )	ASR10 = 214 ASR5 = 238 ASR6 = 238
Limit Levels	1-hr TSP ( $\mu\text{g}/\text{m}^3$ )	500
	24-hr TSP ( $\mu\text{g}/\text{m}^3$ )	260
Measured Levels	Action Level Exceedance for 1-hr TSP is observed at ASR10 ( $475 \mu\text{g}/\text{m}^3$ ) during 1524 - 1624 hrs. Action Level Exceedance for 1-hr TSP is observed at ASR6 ( $401 \mu\text{g}/\text{m}^3$ ) during 1534 - 1634 hrs. Action Level Exceedance for 1-hr TSP is observed at ASR5 ( $370 \mu\text{g}/\text{m}^3$ ) during 1545 - 1645hrs.	
Works Undertaken (at the time of monitoring event)	On 29 July 2017, Surcharge filling was carried out at Works Area Portion N-A and Construction of Ventilation Building at Portion N-C.	
Possible Reason for Action or Limit Level Exceedance(s)	<p>The exceedance(s) are unlikely to be due to the Project, in view of the following:</p> <ul style="list-style-type: none"> <li>According to the construction information provided by the Contractor, the majority of construction works on 29 July 2017 were Surcharge Filling at Works Area Portion N-A and Construction of Ventilation Building at Portions N-C. During the period of the land-based construction works, the Contractor has implemented the required mitigation measures as per the EP, approved EIA and Updated EM&amp;A Manual (e.g. water spraying by water trucks on exposed soil within the Project site and associated work areas; use of wheel washing facilities).</li> <li>Whilst exceedances of Action Level were observed at ASR10, ASR5 and ASR6, the 24-hr TSP level at the monitoring station (ASR10 = <math>99 \mu\text{g}/\text{m}^3</math>, ASR5 = <math>100 \mu\text{g}/\text{m}^3</math>, ASR6 = <math>114 \mu\text{g}/\text{m}^3</math>) on 29 July 2017 were in compliance with the Action and Limit Levels.</li> <li>Same level and extent of construction works were carried out at the same works area on 23<sup>rd</sup> July and 26<sup>th</sup> July whilst no exceedance was recorded. It is thus considered that the observed exceedances for 1-hour TSP at ASR10, ASR5 and ASR6 may represent sporadic event associated with traffic emissions and anthropogenic activities during afternoon rush hour at Lung Mun Road.</li> <li>As stated in the EIA report (Section 4.2.3), the background TSP level of Tuen Mun is higher than the other region of Hong Kong, thus the exceedances may be also contributed cumulatively by the other construction works / traffic within the Tuen Mun Area rather than causing by the construction works of the Project.</li> </ul>	

<b>Actions Taken/ To Be Taken</b>	<p>Based on the record of weekly site inspection on 26 July 2017 and 2 August 2017, no dust nuisance was recorded at the Northern Landfall and activities conducted in this Contract's work has strictly followed the requirements stated in the EP (EP-354/2009/C) (see photo records on <i>Annex A</i>). Inspection of the AQM stations has also been carried out on 4 August 2017. No significant dust impact was observed at all stations. In addition, the Contractor has implemented the required mitigation measures as per the EP, approved EIA and Updated EM&amp;A Manual (e.g. use of water truck on exposed soil within the Project site and associated work areas; use of wheel washing facilities) throughout the construction period, no additional mitigation is deemed necessary. The Enhanced TSP Monitoring has commenced on 24 October 2014, the ET will monitor for future trends in exceedances.</p>
<b>Remarks</b>	<p>The monitoring results and the locations of air quality monitoring stations are attached.</p>

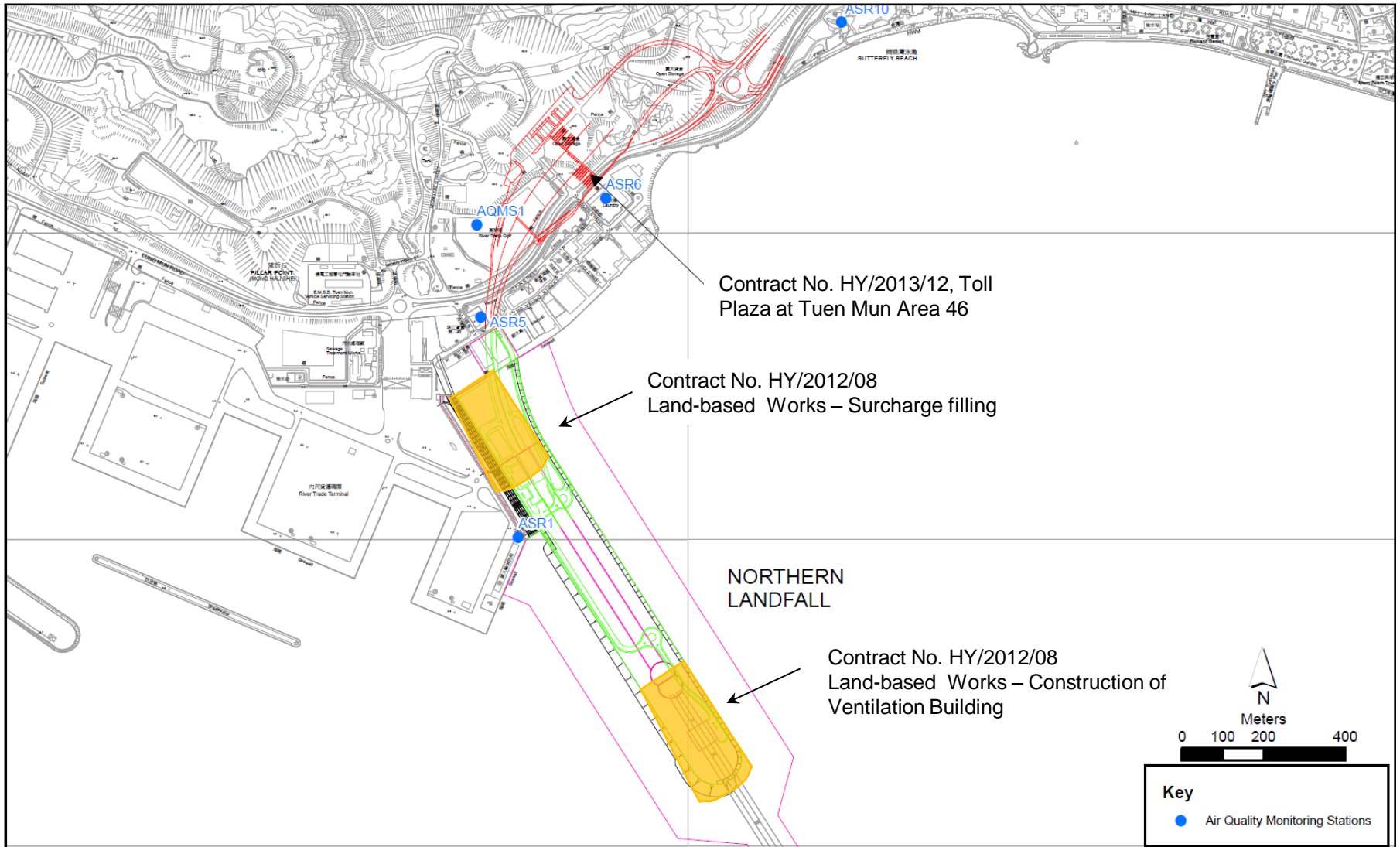


Figure 1

Indicative Construction Works Area on 29 July 2017

Project	Works	Date	Station	Weather	Start time	Parameters	Results	Unit
TMCLKL	HY/2012/08	2017-07-23	AQMS1	Cloudy	15:05	1-hour TSP	47	ug/m3
TMCLKL	HY/2012/08	2017-07-23	AQMS1	Cloudy	16:07	1-hour TSP	63	ug/m3
TMCLKL	HY/2012/08	2017-07-23	AQMS1	Cloudy	17:09	1-hour TSP	31	ug/m3
TMCLKL	HY/2012/08	2017-07-23	ASR1	Cloudy	14:54	1-hour TSP	52	ug/m3
TMCLKL	HY/2012/08	2017-07-23	ASR1	Cloudy	15:56	1-hour TSP	56	ug/m3
TMCLKL	HY/2012/08	2017-07-23	ASR1	Cloudy	16:58	1-hour TSP	52	ug/m3
TMCLKL	HY/2012/08	2017-07-23	ASR10	Cloudy	14:22	1-hour TSP	43	ug/m3
TMCLKL	HY/2012/08	2017-07-23	ASR10	Cloudy	15:24	1-hour TSP	55	ug/m3
TMCLKL	HY/2012/08	2017-07-23	ASR10	Cloudy	16:26	1-hour TSP	47	ug/m3
TMCLKL	HY/2012/08	2017-07-23	ASR5	Cloudy	14:44	1-hour TSP	34	ug/m3
TMCLKL	HY/2012/08	2017-07-23	ASR5	Cloudy	15:46	1-hour TSP	42	ug/m3
TMCLKL	HY/2012/08	2017-07-23	ASR5	Cloudy	16:48	1-hour TSP	40	ug/m3
TMCLKL	HY/2012/08	2017-07-23	ASR6	Cloudy	14:33	1-hour TSP	44	ug/m3
TMCLKL	HY/2012/08	2017-07-23	ASR6	Cloudy	15:35	1-hour TSP	37	ug/m3
TMCLKL	HY/2012/08	2017-07-23	ASR6	Cloudy	16:37	1-hour TSP	36	ug/m3
TMCLKL	HY/2012/08	2017-07-26	AQMS1	Sunny	13:50	1-hour TSP	51	ug/m3
TMCLKL	HY/2012/08	2017-07-26	AQMS1	Sunny	14:52	1-hour TSP	89	ug/m3
TMCLKL	HY/2012/08	2017-07-26	AQMS1	Sunny	15:54	1-hour TSP	78	ug/m3
TMCLKL	HY/2012/08	2017-07-26	ASR1	Sunny	13:39	1-hour TSP	127	ug/m3
TMCLKL	HY/2012/08	2017-07-26	ASR1	Sunny	14:41	1-hour TSP	93	ug/m3
TMCLKL	HY/2012/08	2017-07-26	ASR1	Sunny	15:43	1-hour TSP	48	ug/m3
TMCLKL	HY/2012/08	2017-07-26	ASR10	Sunny	13:07	1-hour TSP	43	ug/m3
TMCLKL	HY/2012/08	2017-07-26	ASR10	Sunny	14:09	1-hour TSP	99	ug/m3
TMCLKL	HY/2012/08	2017-07-26	ASR10	Sunny	15:11	1-hour TSP	43	ug/m3
TMCLKL	HY/2012/08	2017-07-26	ASR5	Sunny	13:29	1-hour TSP	103	ug/m3
TMCLKL	HY/2012/08	2017-07-26	ASR5	Sunny	14:31	1-hour TSP	146	ug/m3
TMCLKL	HY/2012/08	2017-07-26	ASR5	Sunny	15:33	1-hour TSP	102	ug/m3
TMCLKL	HY/2012/08	2017-07-26	ASR6	Sunny	13:18	1-hour TSP	79	ug/m3
TMCLKL	HY/2012/08	2017-07-26	ASR6	Sunny	14:20	1-hour TSP	169	ug/m3
TMCLKL	HY/2012/08	2017-07-26	ASR6	Sunny	15:22	1-hour TSP	70	ug/m3
TMCLKL	HY/2012/08	2017-07-29	AQMS1	Sunny	14:02	1-hour TSP	177	ug/m3
TMCLKL	HY/2012/08	2017-07-29	AQMS1	Sunny	15:04	1-hour TSP	171	ug/m3
TMCLKL	HY/2012/08	2017-07-29	AQMS1	Sunny	16:06	1-hour TSP	224	ug/m3
TMCLKL	HY/2012/08	2017-07-29	ASR1	Sunny	13:52	1-hour TSP	225	ug/m3
TMCLKL	HY/2012/08	2017-07-29	ASR1	Sunny	14:54	1-hour TSP	200	ug/m3
TMCLKL	HY/2012/08	2017-07-29	ASR1	Sunny	15:56	1-hour TSP	209	ug/m3
TMCLKL	HY/2012/08	2017-07-29	ASR10	Sunny	13:20	1-hour TSP	165	ug/m3
TMCLKL	HY/2012/08	2017-07-29	ASR10	Sunny	14:22	1-hour TSP	95	ug/m3
TMCLKL	HY/2012/08	2017-07-29	ASR10	Sunny	15:24	1-hour TSP	475	ug/m3
TMCLKL	HY/2012/08	2017-07-29	ASR5	Sunny	13:41	1-hour TSP	243	ug/m3
TMCLKL	HY/2012/08	2017-07-29	ASR5	Sunny	14:43	1-hour TSP	323	ug/m3
TMCLKL	HY/2012/08	2017-07-29	ASR5	Sunny	15:45	1-hour TSP	370	ug/m3
TMCLKL	HY/2012/08	2017-07-29	ASR6	Sunny	13:30	1-hour TSP	264	ug/m3

TMCLKL	HY/2012/08	2017-07-29	ASR6	Sunny	14:32	1-hour TSP	320	ug/m3
TMCLKL	HY/2012/08	2017-07-29	ASR6	Sunny	15:34	1-hour TSP	401	ug/m3
TMCLKL	HY/2012/08	2017-07-23	AQMS1	Cloudy	18:11	24-hour TSP	41	ug/m3
TMCLKL	HY/2012/08	2017-07-23	ASR1	Cloudy	18:00	24-hour TSP	41	ug/m3
TMCLKL	HY/2012/08	2017-07-23	ASR10	Cloudy	17:28	24-hour TSP	47	ug/m3
TMCLKL	HY/2012/08	2017-07-23	ASR5	Cloudy	17:50	24-hour TSP	39	ug/m3
TMCLKL	HY/2012/08	2017-07-23	ASR6	Cloudy	17:39	24-hour TSP	42	ug/m3
TMCLKL	HY/2012/08	2017-07-26	AQMS1	Sunny	16:56	24-hour TSP	35	ug/m3
TMCLKL	HY/2012/08	2017-07-26	ASR1	Sunny	16:45	24-hour TSP	137	ug/m3
TMCLKL	HY/2012/08	2017-07-26	ASR10	Sunny	16:13	24-hour TSP	21	ug/m3
TMCLKL	HY/2012/08	2017-07-26	ASR5	Sunny	16:35	24-hour TSP	57	ug/m3
TMCLKL	HY/2012/08	2017-07-26	ASR6	Sunny	16:24	24-hour TSP	51	ug/m3
TMCLKL	HY/2012/08	2017-07-29	AQMS1	Sunny	17:08	24-hour TSP	77	ug/m3
TMCLKL	HY/2012/08	2017-07-29	ASR1	Sunny	16:58	24-hour TSP	152	ug/m3
TMCLKL	HY/2012/08	2017-07-29	ASR10	Sunny	16:26	24-hour TSP	99	ug/m3
TMCLKL	HY/2012/08	2017-07-29	ASR5	Sunny	16:47	24-hour TSP	100	ug/m3
TMCLKL	HY/2012/08	2017-07-29	ASR6	Sunny	16:36	24-hour TSP	114	ug/m3





## Annex A Photo Records taken during Weekly Site Inspection

\*Note: Photos taken on 26/7/2017



Water spraying was applied frequently during dry conditions.(Works Area Portion N-A)



Use of water truck on exposed soil within the Project site and associated work areas.  
(Works Area Portion N-C)