

Table K1 *Cumulative Statistics on Exceedances*

Parameters	Level of Exceedance	Total No. recorded in this reporting month	Total No. recorded since project commencement
1-hr TSP	Action	1	67
	Limit	0	4
24-hr TSP	Action	0	7
	Limit	0	4
Water Quality	Action	0	20
	Limit	0	1
Impact Dolphin Monitoring	Action	0	11
	Limit	0	11

Table K2 *Cumulative Statistics on Complaints, Notifications of Summons and Successful Prosecutions*

Reporting Period	Cumulative Statistics		
	Complaints	Notifications of Summons	Successful Prosecutions
This Reporting Month (April 2018)	0	0	0
Total No. received since project commencement	16	1	0

Email
message

**Environmental
Resources
Management**

To Ramboll Hong Kong, Limited (ENPO)

From ERM- Hong Kong, Limited

Ref/Project number Contract No. HY/2012/08 Tuen Mun–Chek Lap
Kok Link–Northern Connection Sub-sea Tunnel
Section

Subject Notification of Exceedance for Air Quality
Impact Monitoring

Date 27 April 2018

16/F Berkshire House,
25 Westlands Road
Quarry Bay, Hong Kong
Telephone: (852) 2271 3113
Facsimile: (852) 2723 5660
E-mail: jovy.tam@erm.com



ERM

Dear Sir or Madam,

Please find attached the Notification of Exceedance (NOE) of the following
Log no.:

0212330_13April2018_1hrTSP_Station ASR5

One Action Level Exceedance was recorded on 13 April 2018.

Regards,



Mr Jovy Tam
Environmental Team Leader

CONFIDENTIALITY NOTICE

This facsimile transmission is intended only for the use of the addressee and is confidential. If you are not the addressee it may be unlawful for you to read, copy, distribute, disclose or otherwise use the information in this facsimile. If you are not the intended recipient, please telephone or fax us.



ERM-Hong Kong, Limited

CONTRACT NO. HY/2012/08
 TUEN MUN – CHEK LAP KOK LINK –
 NORTHERN CONNECTION SUB-SEA TUNNEL SECTION

Air Quality Impact Monitoring
 Notification of Exceedance

Log No.	0212330_13April2018_1hrTSP_Station ASR5 [Total No. of Exceedances = 1]	
Date	13 April 2018 (Measured) 27 April 2018 (Laboratory results received by ERM)	
Monitoring Station	ASR1, ASR5, ASR6, ASR10 and AQMS1	
Parameter(s) with Exceedance(s)	1-hr TSP	
Action Levels	24-hr TSP ($\mu\text{g}/\text{m}^3$)	ASR1 = 213 ASR5 = 238 AQMS1 = 213 ASR6 = 238 ASR10 = 214
	1-hr TSP ($\mu\text{g}/\text{m}^3$)	ASR1 = 331 ASR5 = 340 AQMS1 = 335 ASR6 = 338 ASR10 = 337
Limit Levels	1-hr TSP ($\mu\text{g}/\text{m}^3$)	500
	24-hr TSP ($\mu\text{g}/\text{m}^3$)	260
Measured Levels	Action Level Exceedance for 1-hr TSP is observed at ASR5 (389 $\mu\text{g}/\text{m}^3$) during 1438 – 1538 hrs.	
Works Undertaken (at the time of monitoring event)	On 13 April 2018, box culvert extension was carried out at Works Area Portion N-A and Construction of Ventilation Building at Portion N-C.	
Possible Reason for Action or Limit Level Exceedance(s)	<p>The exceedance is unlikely to be due to the Project, in view of the following:</p> <ul style="list-style-type: none"> According to the construction information provided by the Contractor, the majority of ground construction works on 13 April 2018 were box culvert extension at Works Area Portion N-A and Construction of Ventilation Building at Portions N-C. During the period of the land-based construction works, the Contractor has implemented the required mitigation measures as per the EP, approved EIA and Updated EM&A Manual (e.g. water spraying on exposed soil within the Project site and associated works areas; exposed soil covered by tarpaulin sheets). The exceedances are unlikely to be due to the project as dust suppression measures were implemented properly on site. Water spraying was applied on site to prevent dust. <p>Based on the above, the exceedances are unlikely to be due to the project.</p>	

Actions Taken/ To Be Taken	<p>According to the construction information provided by the Contractor, box culvert extension was carried out at Works Area Portion N-A and Construction of Ventilation Building was carried out at Portion N-C. Water spraying was applied to prevent dust. Photo record is provided in Annex A. Photos taken during AQM were also provided. No significant dust impact was observed at ASR5. Dust suppression measures were properly implemented during the site inspections. Based on the above, no additional action is required.</p> <p>The Contractor has been reminded to implement the required mitigation measures as per the EP, approved EIA and Updated EM&A Manual including watering to maintain all exposed road surfaces and dust sources wet, use of sprinklers for water spraying, covering the materials having the potential to create dust by clean tarpaulin, use of water truck and watering on all exposed soil within the Project site) throughout the construction period. The Contractor was also reminded to ensure all dust mitigation measures are provided at Portion N-A and Portion N-C, where the construction works are carried out.</p>
Remarks	<p>The monitoring results and the locations of air quality monitoring stations are attached.</p>



Annex A Photos provided by the Contractor

*Note: Photos taken on 13/4/2018



Water spraying was applied frequently on site.
(Works Area Portion N-B)



Water spraying was applied frequently on site.
(Works Area Portion N-C)



Annex A Photos provided by the Contractor

*Note: Photos taken on 13/4/2018



Water spraying was applied frequently on site.
(Works Area Portion N-A)



Water spraying was applied frequently on site.
(Works Area Portion N-C)



Annex A Photos taken during AQM

*Note: Photos taken on 13/4/2018



ASR5



ASR5

TMCLKL	HY/2012/08	13/4/2018	AQMS1	Sunny	13:59	1-hour TSP	121	ug/m3
TMCLKL	HY/2012/08	13/4/2018	AQMS1	Sunny	15:01	1-hour TSP	91	ug/m3
TMCLKL	HY/2012/08	13/4/2018	AQMS1	Sunny	16:03	1-hour TSP	80	ug/m3
TMCLKL	HY/2012/08	13/4/2018	ASR1	Sunny	13:48	1-hour TSP	138	ug/m3
TMCLKL	HY/2012/08	13/4/2018	ASR1	Sunny	14:50	1-hour TSP	72	ug/m3
TMCLKL	HY/2012/08	13/4/2018	ASR1	Sunny	15:52	1-hour TSP	75	ug/m3
TMCLKL	HY/2012/08	13/4/2018	ASR10	Sunny	13:14	1-hour TSP	79	ug/m3
TMCLKL	HY/2012/08	13/4/2018	ASR10	Sunny	14:16	1-hour TSP	47	ug/m3
TMCLKL	HY/2012/08	13/4/2018	ASR10	Sunny	15:18	1-hour TSP	41	ug/m3
TMCLKL	HY/2012/08	13/4/2018	ASR5	Sunny	13:36	1-hour TSP	134	ug/m3
TMCLKL	HY/2012/08	13/4/2018	ASR5	Sunny	14:38	1-hour TSP	389	ug/m3
TMCLKL	HY/2012/08	13/4/2018	ASR5	Sunny	15:40	1-hour TSP	111	ug/m3
TMCLKL	HY/2012/08	13/4/2018	ASR6	Sunny	13:25	1-hour TSP	67	ug/m3
TMCLKL	HY/2012/08	13/4/2018	ASR6	Sunny	14:27	1-hour TSP	72	ug/m3
TMCLKL	HY/2012/08	13/4/2018	ASR6	Sunny	15:29	1-hour TSP	70	ug/m3
TMCLKL	HY/2012/08	13/4/2018	AQMS1	Sunny	17:05	24-hour TSP	46	ug/m3
TMCLKL	HY/2012/08	13/4/2018	ASR1	Sunny	16:54	24-hour TSP	62	ug/m3
TMCLKL	HY/2012/08	13/4/2018	ASR10	Sunny	15:18	24-hour TSP	29	ug/m3
TMCLKL	HY/2012/08	13/4/2018	ASR5	Sunny	16:42	24-hour TSP	68	ug/m3
TMCLKL	HY/2012/08	13/4/2018	ASR6	Sunny	16:31	24-hour TSP	43	ug/m3

Meteorological Data for Impact Monitoring in the reporting period			
Date (yy-mm-dd)	Time (24hrs)	Average of Wind Speed (m/s)	Average of Wind Direction(degree)
18/04/13	0:00	2.2	94
18/04/13	1:00	2.2	86
18/04/13	2:00	1.8	88
18/04/13	3:00	1.3	78
18/04/13	4:00	1.8	100
18/04/13	5:00	2.7	90
18/04/13	6:00	2.7	93
18/04/13	7:00	2.7	89
18/04/13	8:00	2.2	92
18/04/13	9:00	3.1	84
18/04/13	10:00	3.1	88
18/04/13	11:00	3.1	84
18/04/13	12:00	3.6	88
18/04/13	13:00	3.6	108
18/04/13	14:00	3.6	135
18/04/13	15:00	3.6	135
18/04/13	16:00	4	130
18/04/13	17:00	3.1	124
18/04/13	18:00	2.7	143
18/04/13	19:00	2.2	123
18/04/13	20:00	2.2	81
18/04/13	21:00	1.8	100
18/04/13	22:00	1.8	87
18/04/13	23:00	0.9	49

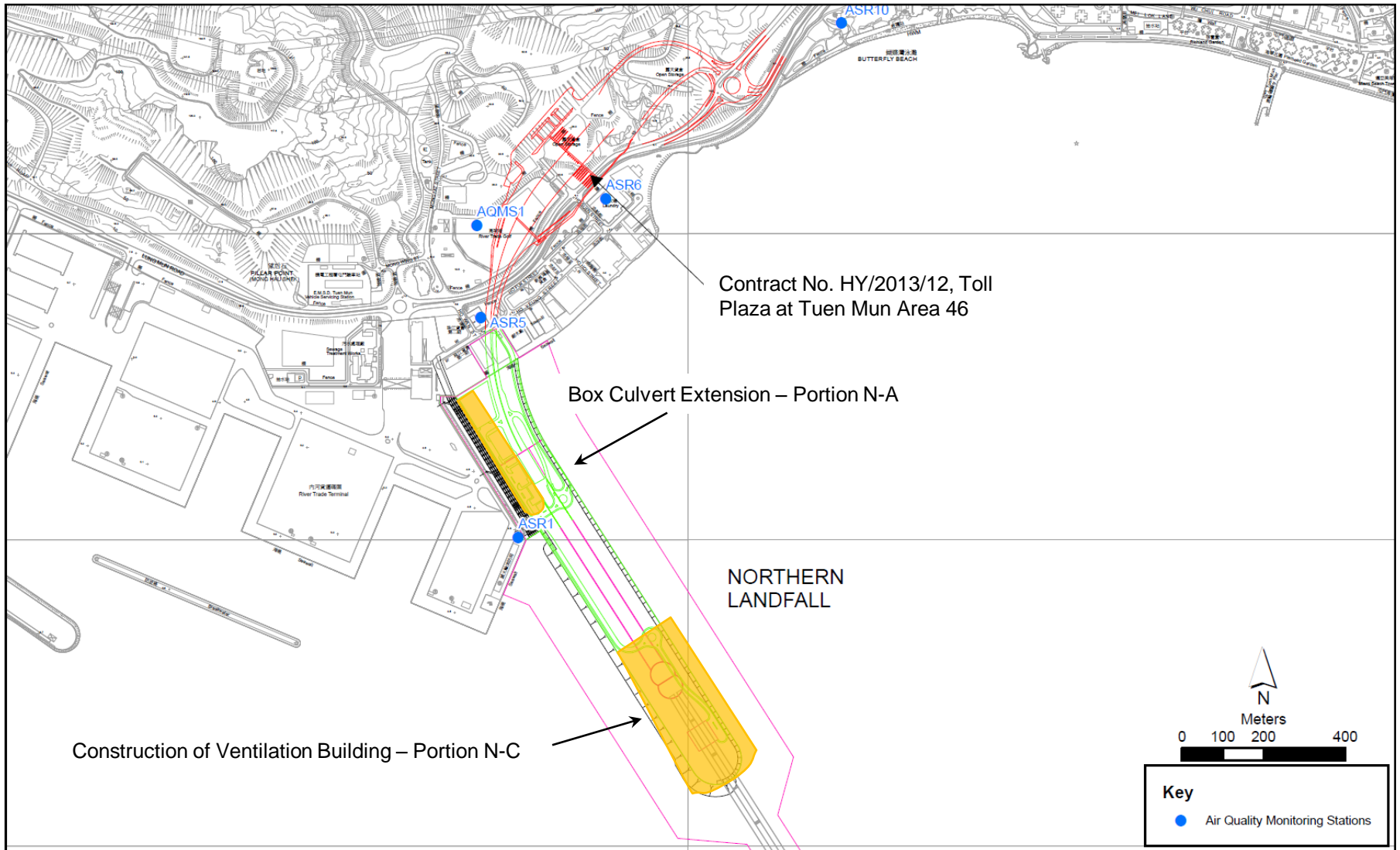


Figure 1

Indicative Construction Works Area on 13 April 2018