

TMCLKL Northern Connection Sub-sea Tunnel Section

North Approach Ramp

Portion N12 Section

NAR - N12 - Pile Load Test Process (83p * 1% = 1p)	24	26-Apr-18 A	01-May-18 A	
NAR - N12 - Open Cut Section - Excavation Start	0	03-May-18 A		
NAR - N12 - Sheet Pile Section - Sheet Pile Installation	36	07-May-18 A	19-Jun-18	0
NAR - N12 - Open Cut Excavation - Bay 1	15	03-May-18 A	21-May-18 A	
NAR - N12 - Open Cut Section - Structure Start	0	04-Jun-18		125
NAR - N12 - Open cut Section - Ramp Structure	84	04-Jun-18	11-Sep-18	125
NAR - N12 - Bay 1 Structure	36	22-May-18 A	05-Jul-18	53
NAR - N12 - Open Cut Excavation - Bay 2	12	20-Jun-18	04-Jul-18	54
NAR - N12 - Bay 2 Structure	36	06-Jul-18	16-Aug-18	53
NAR - Sheet Pile at bay 6 & 7	18	20-Jun-18	11-Jul-18	0
NAR - Dewatering well Installation (Bay 3 to 6)	36	12-Jul-18	22-Aug-18	0
NAR - Pumping Test (Bay 3 to 6)	12	23-Aug-18	05-Sep-18	0
NAR - Excavation & Strut Installation (Bay 3 to 6)	36	06-Sep-18	20-Oct-18	0
NAR - Bay 3 - Base Slab + Retaining Wall	48	20-Sep-18	17-Nov-18	24
NAR - Bay 4 - Base Slab + Retaining Wall	72	06-Oct-18	02-Jan-19	0
NAR - Bay 5 - Base Slab + Retaining Wall	72	22-Oct-18	16-Jan-19	0

Non-Access Ramp Section

PPW - TAM Grouting - Non-ramp section	24	14-May-18 A	11-Jul-18	35
---------------------------------------	----	-------------	-----------	----

Access Ramp Section

NLS Temp Access Ramp - Closure	0		04-Jun-18	0
NLS Temp Access Ramp - Concrete Block & Backfill	18	04-Jun-18	25-Jun-18	0
Predrilling - 4 G.I.	12	26-Jun-18	10-Jul-18	0
Pre-bored H-piles - 12p	36	11-Jul-18	21-Aug-18	0
Pre-bored H-piles - Pile Load Test	36	22-Aug-18	04-Oct-18	0
Pipe Pile Wall - Access Ramp Section	36	11-Jul-18	21-Aug-18	0
Pipe Pile Wall - TAM Grouting	36	22-Aug-18	04-Oct-18	0
Pump wells	35	05-Oct-18	15-Nov-18	0

North Ventilation Building

North Vent Bldg - Louver Installation	48	14-May-18 A	31-Jul-18	817
North Vent Bldg - Roof Steel Structure	48	04-Jun-18	31-Jul-18	817
[KD-11] Section 3B Completion - North Vent Bldg	0		02-May-18 A	
Portion N9 (excl. tunnel level) - Handover	0		31-May-18 A	

North Launching Shaft

NLS Cell 1-3 External Walls

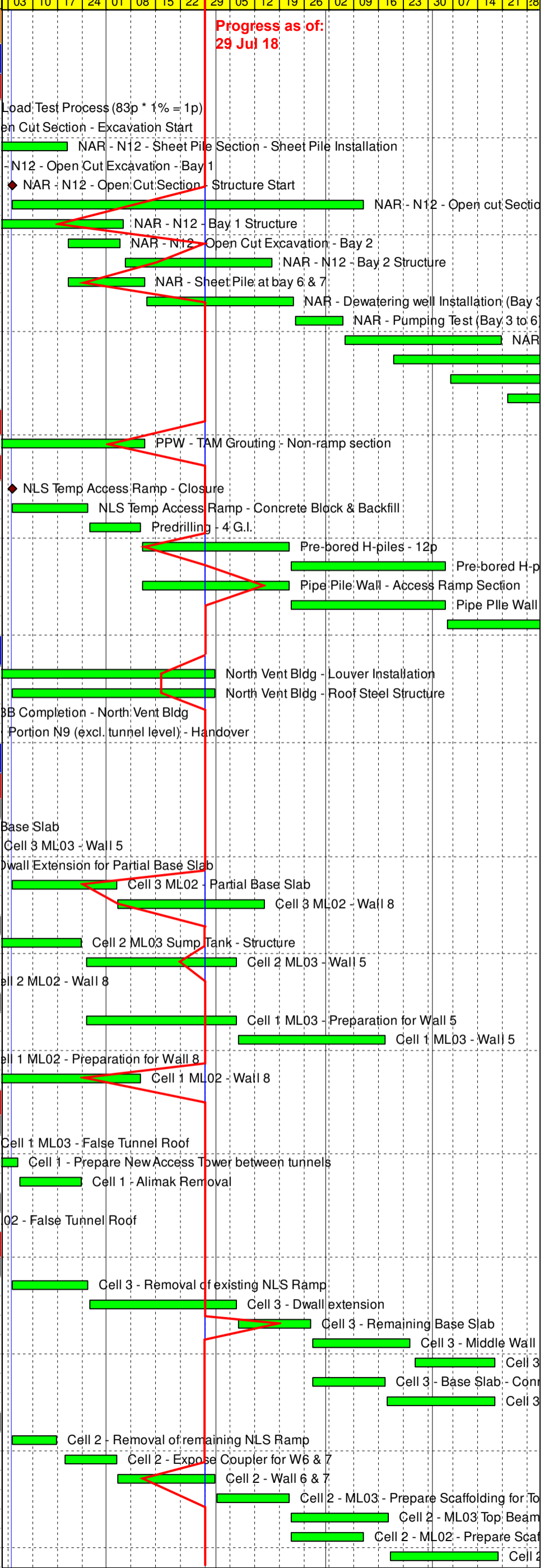
Cell 3				
Cell 3 ML03 - Partial Base Slab	18	21-Mar-18 A	24-Apr-18 A	
Cell 3 ML03 - Wall 5	24	26-Apr-18 A	30-May-18 A	
Cell 3 ML02 - Dwall Extension for Partial Base Slab	24	05-Mar-18 A	05-May-18 A	
Cell 3 ML02 - Partial Base Slab	24	04-Jun-18	03-Jul-18	35
Cell 3 ML02 - Wall 8	36	04-Jul-18	14-Aug-18	35
Cell 2				
Cell 2 ML03 Sump Tank - Structure	30	09-Mar-18 A	23-Jun-18	19
Cell 2 ML03 - Wall 5	36	25-Jun-18	06-Aug-18	19
Cell 2 ML02 - Wall 8	24	19-Apr-18 A	26-May-18 A	
Cell 1				
Cell 1 ML03 - Preparation for Wall 5	36	25-Jun-18	06-Aug-18	24
Cell 1 ML03 - Wall 5	36	07-Aug-18	17-Sep-18	24
Cell 1 ML02 - Preparation for Wall 8	12	21-May-18 A	26-May-18 A	
Cell 1 ML02 - Wall 8	36	28-May-18 A	10-Jul-18	83

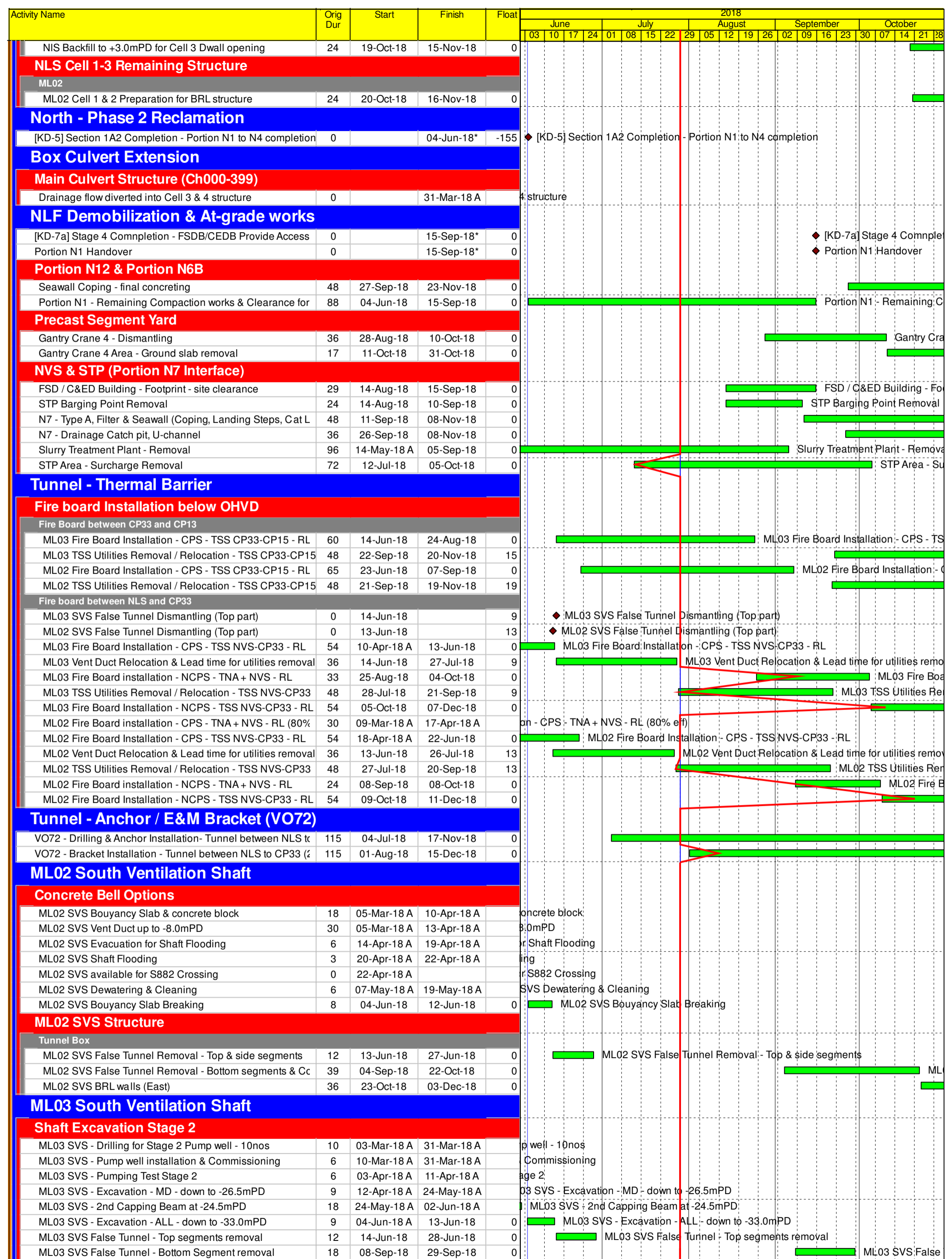
NLS Cell 1 False Tunnel

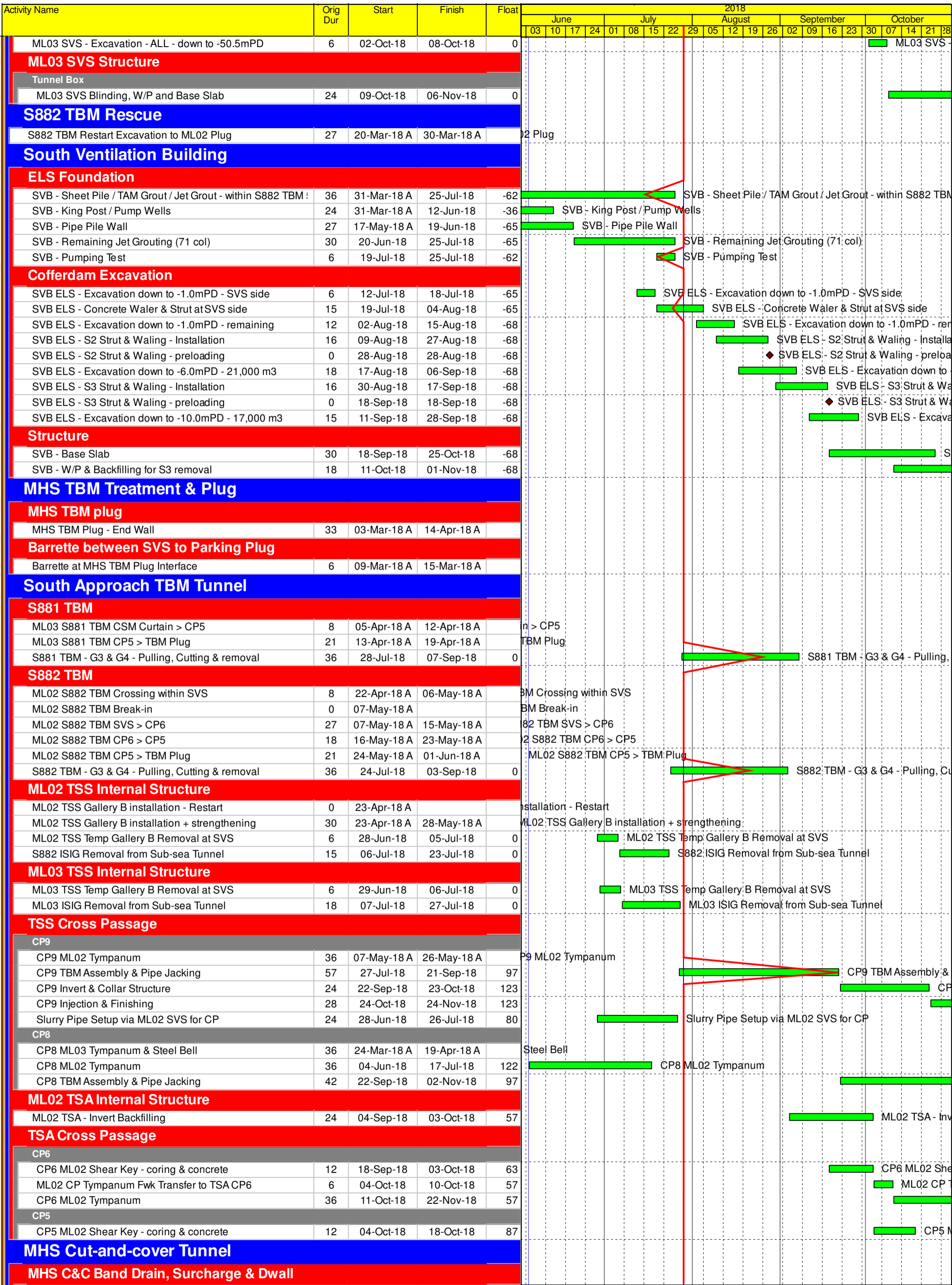
ML03				
Cell 1 ML03 - False Tunnel Roof	18	23-Apr-18 A	29-May-18 A	
Cell 1 - Prepare New Access Tower between tunnels	6	30-May-18 A	05-Jun-18	24
Cell 1 - Alimak Removal	15	06-Jun-18	23-Jun-18	24
ML02				
Cell 1 ML02 - False Tunnel Roof	18	20-Apr-18 A	14-May-18 A	

NLS Cell 1-3 Structure for Cell 3 Dwall opening

Cell 3				
Cell 3 - Removal of existing NLS Ramp	18	04-Jun-18	25-Jun-18	0
Cell 3 - Dwall extension	35	26-Jun-18	06-Aug-18	0
Cell 3 - Remaining Base Slab	18	07-Aug-18	27-Aug-18	0
Cell 3 - Middle Wall	24	28-Aug-18	24-Sep-18	0
Cell 3 - Top Slab	18	26-Sep-18	18-Oct-18	0
Cell 3 - Base Slab - Connecting to NAR	18	28-Aug-18	17-Sep-18	0
Cell 3 - Wall 17 & 18	24	18-Sep-18	18-Oct-18	0
Cell 2				
Cell 2 - Removal of remaining NLS Ramp	12	04-Jun-18	16-Jun-18	0
Cell 2 - Expose Coupler for W6 & 7	12	19-Jun-18	03-Jul-18	0
Cell 2 - Wall 6 & 7	24	04-Jul-18	31-Jul-18	0
Cell 2 - ML03 - Prepare Scaffolding for Top Beams	18	01-Aug-18	21-Aug-18	0
Cell 2 - ML03 Top Beams	24	22-Aug-18	18-Sep-18	0
Cell 2 - ML02 - Prepare Scaffolding for Top beams	18	22-Aug-18	11-Sep-18	6
Cell 2 - ML02 - Top Beams	24	19-Sep-18	19-Oct-18	0







Activity Name	Orig Dur	Start	Finish	Float	2018																			
					June				July				August				September				October			
					03	10	17	24	01	08	15	22	29	05	12	19	26	02	09	16	23	30	07	14
Surcharge Removal to +5.5mPD - Zone 5 - 45,000 m3	20	05-Mar-18 A	10-Apr-18 A		Surcharge Removal to +5.5mPD - Zone 5 - 45,000 m3																			
Surcharge Removal to +5.5mPD - Zone 4A - 15,000 m3	13	11-Apr-18 A	25-Apr-18 A		Surcharge Removal to +5.5mPD - Zone 4A - 15,000 m3																			
Surcharge Removal to +5.5mPD - Zone 4B - 15,000 m3	3	27-Jun-18	29-Jun-18	36	Surcharge Removal to +5.5mPD - Zone 4B - 15,000 m3																			
N MHS C&C Caterpillar Dwall																								
Cell 1 to 3 - Remaining Panels																								
Cell 1 to 3 - Remaining Panels	12	11-Jun-18	25-Jun-18	0	Cell 1 to 3 - Remaining Panels																			
Cell 4 to 8																								
Cell 4 to 5 - Remaining Dwall Panels	40	11-Jun-18	28-Jul-18	0	Cell 4 to 5 - Remaining Dwall Panels																			
Cell 6 to 7 - Remaining Dwall Panels	58	11-Jun-18	18-Aug-18	0	Cell 6 to 7 - Remaining Dwall Panels																			
Cell 8 to 9 - Remaining Dwall Panels	53	06-Oct-18	07-Dec-18	0																				
Cell 10 to 11 - Dwall Panels	75	27-Aug-18	24-Nov-18	0																				
Cell 12 - Dwall Panels	69	20-Aug-18	10-Nov-18	0																				
Cell 13 - Dwall Panels	57	13-Aug-18	20-Oct-18	0	Cell 13 - Dwall Panels																			
N MHS C&C Preparation for Excavation																								
Cell 1 to 3 - Lead time for Dwall Interface Coring	12	08-Jun-18	22-Jun-18	0	Cell 1 to 3 - Lead time for Dwall Interface Coring																			
Cell 1 to 3 - Lead time for Capping beam including Excavation	18	23-Jun-18	14-Jul-18	0	Cell 1 to 3 - Lead time for Capping beam including Excavation																			
Cell 1 to 3 - Lead time for Pumping Test	18	16-Jul-18	04-Aug-18	0	Cell 1 to 3 - Lead time for Pumping Test																			
Cell 4 to 5 - Capping beam / Dewatering / Pump Test	24	30-Jul-18	25-Aug-18	105	Cell 4 to 5 - Capping beam / Dewatering / Pump Test																			
Cell 6 to 7 - Capping beam / Dewatering / Pump Test	24	20-Aug-18	15-Sep-18	104	Cell 6 to 7 - Capping beam / Dewatering / Pump Test																			
Cell 13 - Capping beam / Dewatering / Pump Test	24	22-Oct-18	17-Nov-18	0																				
N MHS C&C Caterpillar Excavation																								
MHS C&C Cell 12 to 04																								
Cell 1 to 3 - Excavation down to +2.5mPD	18	16-Jul-18	04-Aug-18	0	Cell 1 to 3 - Excavation down to +2.5mPD																			
Cell 1 to 3 - Excavation / Ring Beam / RC Strut / Wing Cort	88	06-Aug-18	19-Nov-18	0																				
MHS Approach Ramp																								
Band Drain & Surcharge																								
Surcharge Removal to +5.5mPD - Zone 1A - 20,000 m3	11	26-Apr-18 A	09-May-18 A		Surcharge Removal to +5.5mPD - Zone 1A - 20,000 m3																			
Surcharge Removal to +5.5mPD - Zone 1B - 15,000 m3	4	10-May-18 A	14-May-18 A		Surcharge Removal to +5.5mPD - Zone 1B - 15,000 m3																			
Surcharge Removal to +5.5mPD - Zone 2 - 30,000 m3	20	15-May-18 A	07-Jun-18	0	Surcharge Removal to +5.5mPD - Zone 2 - 30,000 m3																			
Surcharge Removal to +5.5mPD - Zone 3 - 30,000 m3	15	08-Jun-18	26-Jun-18	0	Surcharge Removal to +5.5mPD - Zone 3 - 30,000 m3																			
MHS Ramp Dwall, Treatment & King Post																								
Caterpillar Cell 14 to 15 - Dwall Panels	75	04-Jul-18	29-Sep-18	0	Caterpillar Cell 14 to 15 - Dwall Panels																			
SAR Straight Wall - Dwall Panels	66	08-Jun-18	25-Aug-18	0	SAR Straight Wall - Dwall Panels																			
SAR Open Cut - Sheet Pile Installation	48	08-Jun-18	04-Aug-18	0	SAR Open Cut - Sheet Pile Installation																			
SAR Open Cut - Dewatering Well - along sheet piles	36	30-Jun-18	11-Aug-18	0	SAR Open Cut - Dewatering Well - along sheet piles																			
SAR Open Cut - Dewatering Well - along Dwall	15	13-Aug-18	29-Aug-18	0	SAR Open Cut - Dewatering Well - along Dwall																			
SAR Open Cut - Pump Test	12	30-Aug-18	12-Sep-18	0	SAR Open Cut - Pump Test																			
SAR Open Cut ELS - King Post Installation	18	06-Aug-18	25-Aug-18	39	SAR Open Cut ELS - King Post Installation																			
MHS Approach Ramp Excavation																								
SAR Open Cut Excavation - Above +2.5mPD	12	30-Aug-18	12-Sep-18	0	SAR Open Cut Excavation - Above +2.5mPD																			
SAR Open Cut Excavation - strut free section	36	13-Sep-18	27-Oct-18	0	SAR Open Cut Excavation - strut free section																			
SAR Open Cut Excavation - 1 strut section	36	13-Oct-18	24-Nov-18	0	SAR Open Cut Excavation - 1 strut section																			
MHS Caterpillar Cell 15/14 - Capping Beam / Pump test lea	24	02-Oct-18	30-Oct-18	16	MHS Caterpillar Cell 15/14 - Capping Beam / Pump test lea																			
MHS Approach Ramp Structure																								
SAR Structure - Base Slab - strut free section	60	13-Sep-18	24-Nov-18	0	SAR Structure - Base Slab - strut free section																			
SAR Structure - Retaining Wall - strut free section	66	13-Oct-18	02-Jan-19	0	SAR Structure - Retaining Wall - strut free section																			
VO73 SCB Foundation & Substructure																								
VO73 Issued Date	0		15-Mar-18 A																					
Foundation																								
SCB Foundation - Design clarification / Submission / Apprc	66	16-Mar-18 A	07-Jun-18	0	SCB Foundation - Design clarification / Submission / Approval																			
SCB Foundation - Predrilling & Toe level confirmation	30	08-Jun-18	14-Jul-18	0	SCB Foundation - Predrilling & Toe level confirmation																			
SCB Foundation - Barrettes - within SAR cofferdam	24	16-Jul-18	11-Aug-18	0	SCB Foundation - Barrettes - within SAR cofferdam																			
SCB Foundation - Barrettes - outside SAR cofferdam	24	13-Aug-18	08-Sep-18	74	SCB Foundation - Barrettes - outside SAR cofferdam																			
SCB Foundation - Verification Coring - within SAR cofferdam	27	13-Aug-18	12-Sep-18	0	SCB Foundation - Verification Coring - within SAR cofferdam																			
SCB Foundation - Verification Coring - outside SAR cofferc	27	10-Sep-18	12-Oct-18	74	SCB Foundation - Verification Coring - outside SAR cofferc																			
Southern Landfall - Surface																								
HKBCF Seawall Modification (schedule TBC)																								
HKBCF Vertical Seawall - place Rock underlayer bottom	9	01-Aug-18*	10-Aug-18	-229	HKBCF Vertical Seawall - place Rock underlayer																			
Pause Period (to be verified on site)	90	11-Aug-18	08-Nov-18	-287																				
Drainage Outfall																								
SLF Drainage Outfall - No. 7	24	17-Apr-18 A	29-May-18 A		SLF Drainage Outfall - No. 7																			
SLF Drainage Outfall - No. 6	12	24-Apr-18 A	24-May-18 A		SLF Drainage Outfall - No. 6																			
SLF Drainage Outfall - No. 2	24	30-Apr-18 A	29-May-18 A		SLF Drainage Outfall - No. 2																			
Vacate from Portion N13C-13I, N14A	3	31-May-18 A	31-May-18 A		Vacate from Portion N13C-13I, N14A																			
Retaining Wall Interface with C1																								
Retaining Wall - Superstructure	48	16-Mar-18 A	09-May-18 A		Retaining Wall - Superstructure																			