

TMCLKL Northern Connection Sub-sea Tunnel Section

North Approach Ramp

Portion N12 Section

NAR - N12 - Pile Load Test Process (83p * 1% = 1p)	24	26-Apr-18 A	01-May-18 A	
NAR - N12 - Open Cut Section - Excavation Start	0	03-May-18 A		
NAR - N12 - Sheet Pile Section - Sheet Pile Installation	36	07-May-18 A	19-Jun-18	0
NAR - N12 - Open Cut Excavation - Bay 1	15	03-May-18 A	21-May-18 A	
NAR - N12 - Open Cut Section - Structure Start	0	04-Jun-18		125
NAR - N12 - Open cut Section - Ramp Structure	84	04-Jun-18	11-Sep-18	125
NAR - N12 - Bay 1 Structure	36	22-May-18 A	05-Jul-18	53
NAR - N12 - Open Cut Excavation - Bay 2	12	20-Jun-18	04-Jul-18	54
NAR - N12 - Bay 2 Structure	36	06-Jul-18	16-Aug-18	53
NAR - Sheet Pile at bay 6 & 7	18	20-Jun-18	11-Jul-18	0
NAR - Dewatering well Installation (Bay 3 to 6)	36	12-Jul-18	22-Aug-18	0
NAR - Pumping Test (Bay 3 to 6)	12	23-Aug-18	05-Sep-18	0
NAR - Excavation & Strut Installtion (Bay 3 to 6)	36	06-Sep-18	20-Oct-18	0
NAR - Bay 3 - Base Slab + Retaining Wall	48	20-Sep-18	17-Nov-18	24
NAR - Bay 4 - Base Slab + Retaining Wall	72	06-Oct-18	02-Jan-19	0
NAR - Bay 5 - Base Slab + Retaining Wall	72	22-Oct-18	16-Jan-19	0

Non-Access Ramp Section

PPW - TAM Grouting - Non-ramp section	24	14-May-18 A	11-Jul-18	35
---------------------------------------	----	-------------	-----------	----

Access Ramp Section

NLS Temp Access Ramp - Closure	0		04-Jun-18	0
NLS Temp Access Ramp - Concrete Block & Backfill	18	04-Jun-18	25-Jun-18	0
Predrilling - 4 G.I.	12	26-Jun-18	10-Jul-18	0
Pre-bored H-piles - 12p	36	11-Jul-18	21-Aug-18	0
Pre-bored H-piles - Pile Load Test	36	22-Aug-18	04-Oct-18	0
Pipe Pile Wall - Access Ramp Section	36	11-Jul-18	21-Aug-18	0
Pipe Pile Wall - TAM Grouting	36	22-Aug-18	04-Oct-18	0
Pump wells	35	05-Oct-18	15-Nov-18	0

North Ventilation Building

North Vent Bldg - Louver Installation	48	14-May-18 A	31-Jul-18	817
North Vent Bldg - Roof Steel Structure	48	04-Jun-18	31-Jul-18	817
[KD-11] Section 3B Completion - North Vent Bldg	0		02-May-18 A	
Portion N9 (excl. tunnel level) - Handover	0		31-May-18 A	

North Launching Shaft

NLS Cell 1 False Tunnel

ML03				
Cell 1 ML03 - False Tunnel Roof	18	23-Apr-18 A	29-May-18 A	
Cell 1 - Prepare New Access Tower between tunnels	6	30-May-18 A	05-Jun-18	24
Cell 1 - Alimak Removal	15	06-Jun-18	23-Jun-18	24

ML02				
Cell 1 ML02 - False Tunnel Roof	18	20-Apr-18 A	14-May-18 A	

NLS Cell 1-3 Structure for Cell 3 Dwall opening

Cell 3				
Cell 3 - Removal of existing NLS Ramp	18	04-Jun-18	25-Jun-18	0
Cell 3 - Dwall extension	35	26-Jun-18	06-Aug-18	0
Cell 3 - Remaining Base Slab	18	07-Aug-18	27-Aug-18	0
Cell 3 - Middle Wall	24	28-Aug-18	24-Sep-18	0
Cell 3 - Top Slab	18	26-Sep-18	18-Oct-18	0
Cell 3 - Base Slab - Connecting to NAR	18	28-Aug-18	17-Sep-18	0
Cell 3 - Wall 17 & 18	24	18-Sep-18	18-Oct-18	0

Cell 2				
Cell 2 - Removal of remaining NLS Ramp	12	04-Jun-18	16-Jun-18	0
Cell 2 - Expose Coupler for W6 & 7	12	19-Jun-18	03-Jul-18	0
Cell 2 - Wall 6 & 7	24	04-Jul-18	31-Jul-18	0
Cell 2 - ML03 - Prepare Scaffolding for Top Beams	18	01-Aug-18	21-Aug-18	0
Cell 2 - ML03 Top Beams	24	22-Aug-18	18-Sep-18	0
Cell 2 - ML02 - Prepare Scaffolding for Top beams	18	22-Aug-18	11-Sep-18	6
Cell 2 - ML02 - Top Beams	24	19-Sep-18	19-Oct-18	0
NIS Backfill to +3.0mPD for Cell 3 Dwall opening	24	19-Oct-18	15-Nov-18	0

NLS Cell 1-3 Remaining Structure

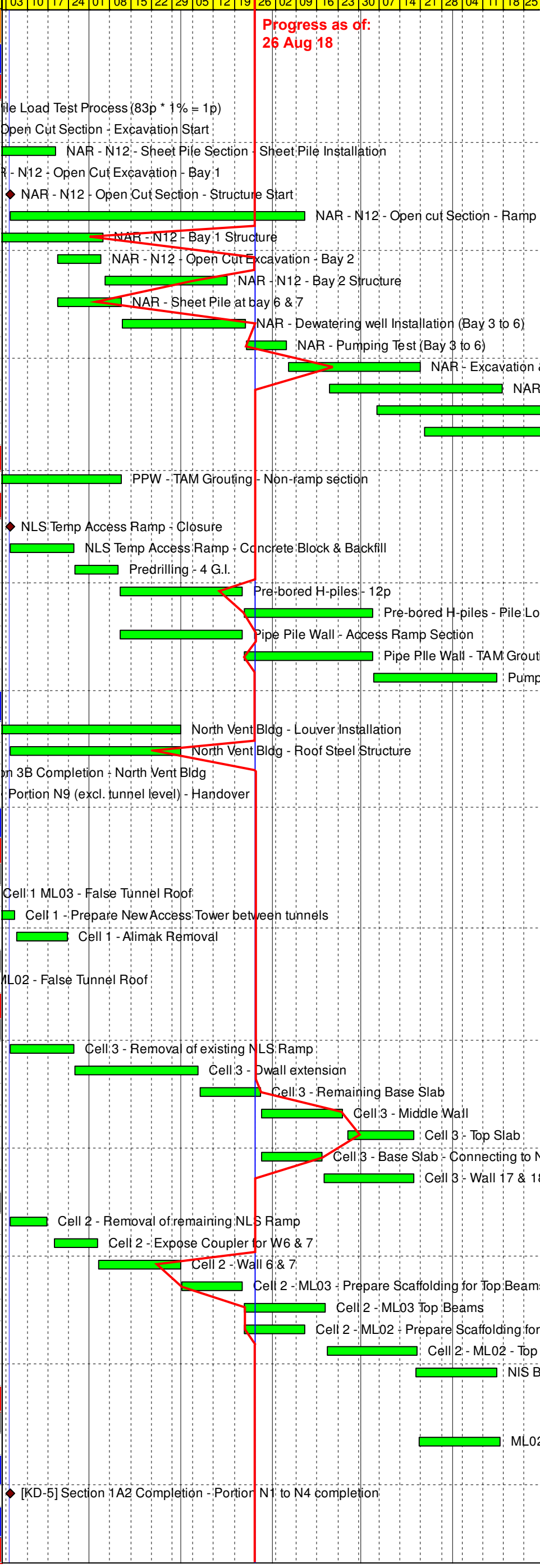
ML02				
ML02 Cell 1 & 2 Preparation for BRL structure	24	20-Oct-18	16-Nov-18	0

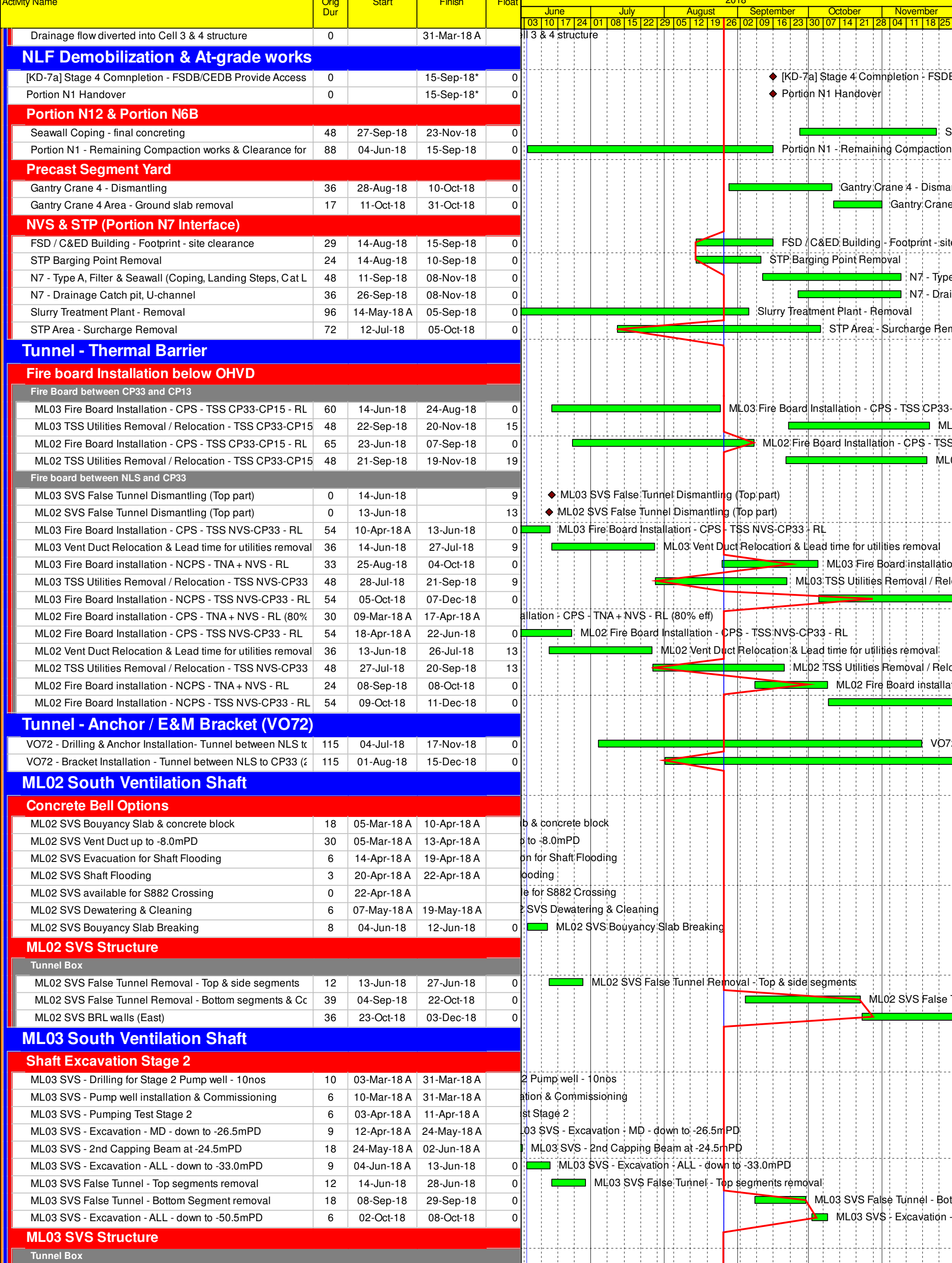
North - Phase 2 Reclamation

[KD-5] Section 1A2 Completion - Portion N1 to N4 completion	0		04-Jun-18*	-155
---	---	--	------------	------

Box Culvert Extension

Main Culvert Structure (Ch000-399)





Activity Name	Orig Dur	Start	Finish	Float	2018																							
					June				July				August				September				October				November			
					03	10	17	24	01	08	15	22	29	05	12	19	26	02	09	16	23	30	07	14	21	28	04	11
ML03 SVS Blinding, W/P and Base Slab	24	09-Oct-18	06-Nov-18	0																								
S882 TBM Rescue																												
S882 TBM Restart Excavation to ML02 Plug	27	20-Mar-18 A	30-Mar-18 A		to ML02 Plug																							
South Ventilation Building																												
ELS Foundation																												
SVB - Sheet Pile / TAM Grout / Jet Grout - within S882 TBM	36	31-Mar-18 A	25-Jul-18	-62	SVB - Sheet Pile / TAM Grout / Jet Grout - within S882 TBM 5m																							
SVB - King Post / Pump Wells	24	31-Mar-18 A	12-Jun-18	-36	SVB - King Post / Pump Wells																							
SVB - Pipe Pile Wall	27	17-May-18 A	19-Jun-18	-65	SVB - Pipe Pile Wall																							
SVB - Remaining Jet Grouting (71 col)	30	20-Jun-18	25-Jul-18	-65	SVB - Remaining Jet Grouting (71 col)																							
SVB - Pumping Test	6	19-Jul-18	25-Jul-18	-62	SVB - Pumping Test																							
Cofferdam Excavation																												
SVB ELS - Excavation down to -1.0mPD - SVS side	6	12-Jul-18	18-Jul-18	-65	SVB ELS - Excavation down to -1.0mPD - SVS side																							
SVB ELS - Concrete Waler & Strut at SVS side	15	19-Jul-18	04-Aug-18	-65	SVB ELS - Concrete Waler & Strut at SVS side																							
SVB ELS - Excavation down to -1.0mPD - remaining	12	02-Aug-18	15-Aug-18	-68	SVB ELS - Excavation down to -1.0mPD - remaining																							
SVB ELS - S2 Strut & Waling - Installation	16	09-Aug-18	27-Aug-18	-68	SVB ELS - S2 Strut & Waling - Installation																							
SVB ELS - S2 Strut & Waling - preloading	0	28-Aug-18	28-Aug-18	-68	SVB ELS - S2 Strut & Waling - preloading																							
SVB ELS - Excavation down to -6.0mPD - 21,000 m3	18	17-Aug-18	06-Sep-18	-68	SVB ELS - Excavation down to -6.0mPD -																							
SVB ELS - S3 Strut & Waling - Installation	16	30-Aug-18	17-Sep-18	-68	SVB ELS - S3 Strut & Waling - Insta																							
SVB ELS - S3 Strut & Waling - preloading	0	18-Sep-18	18-Sep-18	-68	SVB ELS - S3 Strut & Waling - prelo																							
SVB ELS - Excavation down to -10.0mPD - 17,000 m3	15	11-Sep-18	28-Sep-18	-68	SVB ELS - Excavation down to																							
Structure																												
SVB - Base Slab	30	18-Sep-18	25-Oct-18	-68	SVB - Base Slab																							
SVB - W/P & Backfilling for S3 removal	18	11-Oct-18	01-Nov-18	-68	SVB - W/P &																							
MHS TBM Treatment & Plug																												
MHS TBM plug																												
MHS TBM Plug - End Wall	33	03-Mar-18 A	14-Apr-18 A		Wall																							
Barrette between SVS to Parking Plug																												
Barrette at MHS TBM Plug Interface	6	09-Mar-18 A	15-Mar-18 A																									
South Approach TBM Tunnel																												
S881 TBM																												
ML03 S881 TBM CSM Curtain > CP5	8	05-Apr-18 A	12-Apr-18 A		Curtain > CP5																							
ML03 S881 TBM CP5 > TBM Plug	21	13-Apr-18 A	19-Apr-18 A		5 > TBM Plug																							
S881 TBM - G3 & G4 - Pulling, Cutting & removal	36	28-Jul-18	07-Sep-18	0	S881 TBM - G3 & G4 - Pulling, Cutting &																							
S882 TBM																												
ML02 S882 TBM Crossing within SVS	8	22-Apr-18 A	06-May-18 A		TBM Crossing within SVS																							
ML02 S882 TBM Break-in	0	07-May-18 A			TBM Break-in																							
ML02 S882 TBM SVS > CP6	27	07-May-18 A	15-May-18 A		S882 TBM SVS > CP6																							
ML02 S882 TBM CP6 > CP5	18	16-May-18 A	23-May-18 A		ML02 S882 TBM CP6 > CP5																							
ML02 S882 TBM CP5 > TBM Plug	21	24-May-18 A	01-Jun-18 A		ML02 S882 TBM CP5 > TBM Plug																							
S882 TBM - G3 & G4 - Pulling, Cutting & removal	36	24-Jul-18	03-Sep-18	0	S882 TBM - G3 & G4 - Pulling, Cutting & re																							
ML02 TSS Internal Structure																												
ML02 TSS Gallery B installation - Restart	0	23-Apr-18 A			B installation - Restart																							
ML02 TSS Gallery B installation + strengthening	30	23-Apr-18 A	28-May-18 A		ML02 TSS Gallery B installation + strengthening																							
ML02 TSS Temp Gallery B Removal at SVS	6	28-Jun-18	05-Jul-18	0	ML02 TSS Temp Gallery B Removal at SVS																							
S882 ISIG Removal from Sub-sea Tunnel	15	06-Jul-18	23-Jul-18	0	S882 ISIG Removal from Sub-sea Tunnel																							
ML03 TSS Internal Structure																												
ML03 TSS Temp Gallery B Removal at SVS	6	29-Jun-18	06-Jul-18	0	ML03 TSS Temp Gallery B Removal at SVS																							
ML03 ISIG Removal from Sub-sea Tunnel	18	07-Jul-18	27-Jul-18	0	ML03 ISIG Removal from Sub-sea Tunnel																							
TSS Cross Passage																												
CP9																												
CP9 ML02 Tympanum	36	07-May-18 A	26-May-18 A		CP9 ML02 Tympanum																							
CP9 TBM Assembly & Pipe Jacking	57	27-Jul-18	21-Sep-18	97	CP9 TBM Assembly & Pipe Jacking																							
CP9 Invert & Collar Structure	24	22-Sep-18	23-Oct-18	123	CP9 Invert & Coll																							
CP9 Injection & Finishing	28	24-Oct-18	24-Nov-18	123	CP9 Injection & Finishing																							
Slurry Pipe Setup via ML02 SVS for CP	24	28-Jun-18	26-Jul-18	80	Slurry Pipe Setup via ML02 SVS for CP																							
CP8																												
CP8 ML03 Tympanum & Steel Bell	36	24-Mar-18 A	19-Apr-18 A		CP8 ML03 Tympanum & Steel Bell																							
CP8 ML02 Tympanum	36	04-Jun-18	17-Jul-18	122	CP8 ML02 Tympanum																							
CP8 TBM Assembly & Pipe Jacking	42	22-Sep-18	02-Nov-18	97	CP8 TBM As																							
ML02 TSA Internal Structure																												
ML02 TSA - Invert Backfilling	24	04-Sep-18	03-Oct-18	57	ML02 TSA - Invert Backfillin																							
TSA Cross Passage																												
CP6																												
CP6 ML02 Shear Key - coring & concrete	12	18-Sep-18	03-Oct-18	63	CP6 ML02 Shear Key - cori																							
ML02 CP Tympanum Fwk Transfer to TSA CP6	6	04-Oct-18	10-Oct-18	57	ML02 CP Tympanum Fw																							
CP6 ML02 Tympanum	36	11-Oct-18	22-Nov-18	57	CP6 ML02 Tympanum																							
CP5																												
CP5 ML02 Shear Key - coring & concrete	12	04-Oct-18	18-Oct-18	87	CP5 ML02 Shear Ke																							

Activity Name	Orig Dur	Start	Finish	Float	2018																								
					June				July				August				September				October				November				
					03	10	17	24	01	08	15	22	29	05	12	19	26	02	09	16	23	30	07	14	21	28	04	11	18
MHS Cut-and-cover Tunnel																													
MHS C&C Band Drain, Surcharge & Dwall																													
Surcharge Removal to +5.5mPD - Zone 5 - 45,000 m3	20	05-Mar-18 A	10-Apr-18 A		5.5mPD - Zone 5 - 45,000 m3																								
Surcharge Removal to +5.5mPD - Zone 4A - 15,000 m3	13	11-Apr-18 A	25-Apr-18 A		Surcharge Removal to +5.5mPD - Zone 4A - 15,000 m3																								
Surcharge Removal to +5.5mPD - Zone 4B - 15,000 m3	3	27-Jun-18	29-Jun-18	36	Surcharge Removal to +5.5mPD - Zone 4B - 15,000 m3																								
N MHS C&C Caterpillar Dwall																													
Cell 1 to 3 - Remaining Panels																													
Cell 1 to 3 - Remaining Panels	12	11-Jun-18	25-Jun-18	0	Cell 1 to 3 - Remaining Panels																								
Cell 4 to 8																													
Cell 4 to 5 - Remaining Dwall Panels	40	11-Jun-18	28-Jul-18	0	Cell 4 to 5 - Remaining Dwall Panels																								
Cell 6 to 7 - Remaining Dwall Panels	58	11-Jun-18	18-Aug-18	0	Cell 6 to 7 - Remaining Dwall Panels																								
Cell 8 to 9 - Remaining Dwall Panels	53	06-Oct-18	07-Dec-18	0																									
Cell 10 to 11 - Dwall Panels	75	27-Aug-18	24-Nov-18	0																									
Cell 12 - Dwall Panels	69	20-Aug-18	10-Nov-18	0																									
Cell 13 - Dwall Panels	57	13-Aug-18	20-Oct-18	0																									
N MHS C&C Preparation for Excavation																													
Cell 1 to 3 - Lead time for Dwall Interface Coring	12	08-Jun-18	22-Jun-18	0	Cell 1 to 3 - Lead time for Dwall Interface Coring																								
Cell 1 to 3 - Lead time for Capping beam including Excavation	18	23-Jun-18	14-Jul-18	0	Cell 1 to 3 - Lead time for Capping beam including Excavation																								
Cell 1 to 3 - Lead time for Pumping Test	18	16-Jul-18	04-Aug-18	0	Cell 1 to 3 - Lead time for Pumping Test																								
Cell 4 to 5 - Capping beam / Dewatering / Pump Test	24	30-Jul-18	25-Aug-18	105	Cell 4 to 5 - Capping beam / Dewatering / Pump Test																								
Cell 6 to 7 - Capping beam / Dewatering / Pump Test	24	20-Aug-18	15-Sep-18	104	Cell 6 to 7 - Capping beam / Dewatering / Pump Test																								
Cell 13 - Capping beam / Dewatering / Pump Test	24	22-Oct-18	17-Nov-18	0	Cell 13 - Capping beam / Dewatering / Pump Test																								
N MHS C&C Caterpillar Excavation																													
MHS C&C Cell 12 to 04																													
Cell 1 to 3 - Excavation down to +2.5mPD	18	16-Jul-18	04-Aug-18	0	Cell 1 to 3 - Excavation down to +2.5mPD																								
Cell 1 to 3 - Excavation / Ring Beam / RC Strut / Wing Cort	88	06-Aug-18	19-Nov-18	0	Cell 1 to 3 - Excavation / Ring Beam / RC Strut / Wing Cort																								
MHS Approach Ramp																													
Band Drain & Surcharge																													
Surcharge Removal to +5.5mPD - Zone 1A - 20,000 m3	11	26-Apr-18 A	09-May-18 A		Surcharge Removal to +5.5mPD - Zone 1A - 20,000 m3																								
Surcharge Removal to +5.5mPD - Zone 1B - 15,000 m3	4	10-May-18 A	14-May-18 A		Surcharge Removal to +5.5mPD - Zone 1B - 15,000 m3																								
Surcharge Removal to +5.5mPD - Zone 2 - 30,000 m3	20	15-May-18 A	07-Jun-18	0	Surcharge Removal to +5.5mPD - Zone 2 - 30,000 m3																								
Surcharge Removal to +5.5mPD - Zone 3 - 30,000 m3	15	08-Jun-18	26-Jun-18	0	Surcharge Removal to +5.5mPD - Zone 3 - 30,000 m3																								
MHS Ramp Dwall, Treatment & King Post																													
Caterpillar Cell 14 to 15 - Dwall Panels	75	04-Jul-18	29-Sep-18	0	Caterpillar Cell 14 to 15 - Dwall Panels																								
SAR Straight Wall - Dwall Panels	66	08-Jun-18	25-Aug-18	0	SAR Straight Wall - Dwall Panels																								
SAR Open Cut - Sheet Pile Installation	48	08-Jun-18	04-Aug-18	0	SAR Open Cut - Sheet Pile Installation																								
SAR Open Cut - Dewatering Well - along sheet piles	36	30-Jun-18	11-Aug-18	0	SAR Open Cut - Dewatering Well - along sheet piles																								
SAR Open Cut - Dewatering Well - along Dwall	15	13-Aug-18	29-Aug-18	0	SAR Open Cut - Dewatering Well - along Dwall																								
SAR Open Cut - Pump Test	12	30-Aug-18	12-Sep-18	0	SAR Open Cut - Pump Test																								
SAR Open Cut ELS - King Post Installation	18	06-Aug-18	25-Aug-18	39	SAR Open Cut ELS - King Post Installation																								
MHS Approach Ramp Excavation																													
SAR Open Cut Excavation - Above +2.5mPD	12	30-Aug-18	12-Sep-18	0	SAR Open Cut Excavation - Above +2.5mPD																								
SAR Open Cut Excavation - strut free section	36	13-Sep-18	27-Oct-18	0	SAR Open Cut Excavation - strut free section																								
SAR Open Cut Excavation - 1 strut section	36	13-Oct-18	24-Nov-18	0	SAR Open Cut Excavation - 1 strut section																								
MHS Caterpillar Cell 15/14 - Capping Beam / Pump test lea	24	02-Oct-18	30-Oct-18	16	MHS Caterpillar Cell 15/14 - Capping Beam / Pump test lea																								
MHS Approach Ramp Structure																													
SAR Structure - Base Slab - strut free section	60	13-Sep-18	24-Nov-18	0	SAR Structure - Base Slab - strut free section																								
SAR Structure - Retaining Wall - strut free section	66	13-Oct-18	02-Jan-19	0	SAR Structure - Retaining Wall - strut free section																								
VO73 SCB Foundation & Substructure																													
VO73 Issued Date	0		15-Mar-18 A																										
Foundation																													
SCB Foundation - Design clarification / Submission / Apprc	66	16-Mar-18 A	07-Jun-18	0	SCB Foundation - Design clarification / Submission / Approval																								
SCB Foundation - Predrilling & Toe level confirmation	30	08-Jun-18	14-Jul-18	0	SCB Foundation - Predrilling & Toe level confirmation																								
SCB Foundation - Barrettes - within SAR cofferdam	24	16-Jul-18	11-Aug-18	0	SCB Foundation - Barrettes - within SAR cofferdam																								
SCB Foundation - Barrettes - outside SAR cofferdam	24	13-Aug-18	08-Sep-18	74	SCB Foundation - Barrettes - outside SAR cofferdam																								
SCB Foundation - Verification Coring - within SAR cofferdam	27	13-Aug-18	12-Sep-18	0	SCB Foundation - Verification Coring - within SAR cofferdam																								
SCB Foundation - Verification Coring - outside SAR cofferc	27	10-Sep-18	12-Oct-18	74	SCB Foundation - Verification Coring - outside SAR cofferc																								
Southern Landfall - Surface																													
HKBCF Seawall Modification (schedule TBC)																													
HKBCF Vertical Seawall - place Rock underlayer bottom	9	01-Aug-18*	10-Aug-18	-229	HKBCF Vertical Seawall - place Rock underlayer bottom																								
Pause Period (to be verified on site)	90	11-Aug-18	08-Nov-18	-287	Pause Period																								
Drainage Outfall																													
SLF Drainage Outfall - No. 7	24	17-Apr-18 A	29-May-18 A		SLF Drainage Outfall - No. 7																								
SLF Drainage Outfall - No. 6	12	24-Apr-18 A	24-May-18 A		SLF Drainage Outfall - No. 6																								
SLF Drainage Outfall - No. 2	24	30-Apr-18 A	29-May-18 A		SLF Drainage Outfall - No. 2																								
Vacate from Portion N13C-13I, N14A	3	31-May-18 A	31-May-18 A		Vacate from Portion N13C-13I, N14A																								
Retaining Wall Interface with C1																													
Retaining Wall - Superstructure	48	16-Mar-18 A	09-May-18 A		Retaining Wall - Superstructure																								