

**Table K1** *Cumulative Statistics on Exceedances*

Parameters	Level of Exceedance	Total No. recorded in this reporting month	Total No. recorded since project commencement
1-hr TSP	Action	3	82
	Limit	0	5
24-hr TSP	Action	0	8
	Limit	0	4
Water Quality	Action	0	20
	Limit	0	1
Impact Dolphin Monitoring	Action	0	11
	Limit	0	14

**Table K2** *Cumulative Statistics on Complaints, Notifications of Summons and Successful Prosecutions*

Reporting Period	Cumulative Statistics		
	Complaints	Notifications of Summons	Successful Prosecutions
This Reporting Month (December 2018)	0	0	0
Total No. received since project commencement	16	1	0

**Email  
message**

**Environmental  
Resources  
Management**

**To** Ramboll Hong Kong, Limited (ENPO)

**From** ERM- Hong Kong, Limited

**Ref/Project number** Contract No. HY/2012/08 Tuen Mun–Chek Lap  
Kok Link–Northern Connection Sub-sea Tunnel  
Section

**Subject** Notification of Exceedance for Air Quality  
Impact Monitoring

**Date** 14 December 2018

2507, 25/F One Harbourfront  
18 Tak Fung Street  
Hung Hom, Kowloon  
Hong Kong  
Telephone: (852) 2271 3000  
Facsimile: (852) 2723 5660



**ERM**

---

Dear Sir or Madam,

Please find attached the Notification of Exceedance (NOE) of the following  
Log no.:

**0212330\_9December2018\_1hrTSP\_Station ASR1**

One Action Level Exceedance was recorded on 9 December 2018.

Regards,

A handwritten signature in black ink that reads "Jasmine".

Dr Jasmine Ng  
Environmental Team Leader

---

**CONFIDENTIALITY NOTICE**

This facsimile transmission is intended only for the use of the addressee and is confidential. If you are not the addressee it may be unlawful for you to read, copy, distribute, disclose or otherwise use the information in this facsimile. If you are not the intended recipient, please telephone or fax us.

---



ERM-Hong Kong, Limited

CONTRACT NO. HY/2012/08  
 TUEN MUN – CHEK LAP KOK LINK –  
 NORTHERN CONNECTION SUB-SEA TUNNEL SECTION

Air Quality Impact Monitoring  
 Notification of Exceedance

<b>Log No.</b>	0212330_9December2018_1hrTSP_Station ASR1 [Total No. of Exceedances = 1]	
<b>Date</b>	9 December 2018 (Measured) 14 December 2018 (Laboratory results received by ERM)	
<b>Monitoring Station</b>	ASR1, ASR5, ASR6, ASR10 and AQMS1	
<b>Parameter(s) with Exceedance(s)</b>	1-hr TSP	
<b>Action Levels</b>	24-hr TSP ( $\mu\text{g}/\text{m}^3$ )	ASR1 = 213 ASR5 = 238 AQMS1 = 213 ASR6 = 238 ASR10 = 214
	1-hr TSP ( $\mu\text{g}/\text{m}^3$ )	ASR1 = 331 ASR5 = 340 AQMS1 = 335 ASR6 = 338 ASR10 = 337
<b>Limit Levels</b>	1-hr TSP ( $\mu\text{g}/\text{m}^3$ )	500
	24-hr TSP ( $\mu\text{g}/\text{m}^3$ )	260
<b>Measured Levels</b>	Action Level Exceedance for 1-hr TSP is observed at ASR1 ( $346 \mu\text{g}/\text{m}^3$ ) during 1044 - 1144 hrs.	
<b>Works Undertaken (at the time of monitoring event)</b>	On 9 December 2018, no construction works was carried out on site.	
<b>Possible Reason for Action or Limit Level Exceedance(s)</b>	<p>The exceedance is unlikely to be due to this Contract, in view of the following:</p> <ul style="list-style-type: none"> <li>According to the construction information provided by the Contractor, no construction works was carried out on site on 9 December 2018. The Contractor has implemented the required mitigation measures as per the EP, approved EIA and Updated EM&amp;A Manual (e.g. water spraying on exposed soil within the site and associated works areas; exposed soil covered by tarpaulin sheets).</li> <li>The exceedance is unlikely to be due to this Contract as dust suppression measures were implemented properly on site. Water spraying was applied on site to prevent dust.</li> </ul> <p>Based on the above, the exceedances are unlikely to be due to this Contract.</p>	

<b>Actions Taken/ To Be Taken</b>	<p>According to the construction information provided by the Contractor, no construction works was carried out on 9 December 2018. Dust suppression measures were properly implemented. Water spraying was applied to prevent dust. Photo record is provided in Annex A. Photos taken during AQM are also provided.</p> <p>The Contractor has been reminded to implement the required mitigation measures as per the EP, approved EIA and Updated EM&amp;A Manual including watering to maintain all exposed road surfaces and dust sources wet, use of sprinklers for water spraying, covering the materials having the potential to create dust by clean tarpaulin, use of water truck and watering on all exposed soil within the site) throughout the construction period.</p>
<b>Remarks</b>	<p>The monitoring results, wind data, and the locations of air quality monitoring stations are attached.</p>



**Annex A      Photos provided by the Contractor**

\*Note: Photos taken on 9/12/2018



Water truck was used for dust control. (Works Area Portion N-C)



Water spraying was applied on the main haul road. (Works Area Portion N-C)



## Annex A Photos provided by the Contractor

\*Note: Photos taken on 9/12/2018



Water spraying was applied on the main haul road. (Works Area Portion N-A)



Dusty material was covered by tarpaulin sheets. (Works Area Portion N-A)



**Annex A      Photos taken during AQM**

\*Note: Photos taken on 9/12/2018



ASR1



ASR1

## Air quality monitoring results on 9/12/2018

Project	Works	Date	Station	Weather	Start time	Parameters	Results	Unit
TMCLKL	HY/2012/08	9/12/2018	AQMS1	Cloudy	8:52	1-hour TSP	79	ug/m3
TMCLKL	HY/2012/08	9/12/2018	AQMS1	Cloudy	9:54	1-hour TSP	57	ug/m3
TMCLKL	HY/2012/08	9/12/2018	AQMS1	Cloudy	10:56	1-hour TSP	75	ug/m3
TMCLKL	HY/2012/08	9/12/2018	ASR1	Cloudy	8:40	1-hour TSP	135	ug/m3
TMCLKL	HY/2012/08	9/12/2018	ASR1	Cloudy	9:42	1-hour TSP	212	ug/m3
TMCLKL	HY/2012/08	9/12/2018	ASR1	Cloudy	10:44	1-hour TSP	346	ug/m3
TMCLKL	HY/2012/08	9/12/2018	ASR10	Cloudy	8:05	1-hour TSP	74	ug/m3
TMCLKL	HY/2012/08	9/12/2018	ASR10	Cloudy	9:07	1-hour TSP	79	ug/m3
TMCLKL	HY/2012/08	9/12/2018	ASR10	Cloudy	10:09	1-hour TSP	83	ug/m3
TMCLKL	HY/2012/08	9/12/2018	ASR5	Cloudy	8:28	1-hour TSP	201	ug/m3
TMCLKL	HY/2012/08	9/12/2018	ASR5	Cloudy	9:30	1-hour TSP	194	ug/m3
TMCLKL	HY/2012/08	9/12/2018	ASR5	Cloudy	10:32	1-hour TSP	194	ug/m3
TMCLKL	HY/2012/08	9/12/2018	ASR6	Cloudy	8:16	1-hour TSP	134	ug/m3
TMCLKL	HY/2012/08	9/12/2018	ASR6	Cloudy	9:18	1-hour TSP	97	ug/m3
TMCLKL	HY/2012/08	9/12/2018	ASR6	Cloudy	10:20	1-hour TSP	112	ug/m3
TMCLKL	HY/2012/08	9/12/2018	AQMS1	Cloudy	11:58	24-hour TSP	35	ug/m3
TMCLKL	HY/2012/08	9/12/2018	ASR1	Cloudy	11:46	24-hour TSP	62	ug/m3
TMCLKL	HY/2012/08	9/12/2018	ASR10	Cloudy	11:09	24-hour TSP	40	ug/m3
TMCLKL	HY/2012/08	9/12/2018	ASR5	Cloudy	11:34	24-hour TSP	117	ug/m3
TMCLKL	HY/2012/08	9/12/2018	ASR6	Cloudy	11:22	24-hour TSP	53	ug/m3



**Meteorological Data for Impact Monitoring in the reporting period**

<b>Date (yy-mm-dd)</b>	<b>Time (24hrs)</b>	<b>Average of Wind Speed (m/s)</b>	<b>Average of Wind Direction(degree)</b>
18/12/09	0:00	2.7	21
18/12/09	1:00	3.1	34
18/12/09	2:00	2.2	55
18/12/09	3:00	2.2	39
18/12/09	4:00	1.3	18
18/12/09	5:00	1.3	56
18/12/09	6:00	1.8	56
18/12/09	7:00	1.8	38
18/12/09	8:00	2.2	36
18/12/09	9:00	2.7	14
18/12/09	10:00	1.8	32
18/12/09	11:00	0.9	43
18/12/09	12:00	0.9	41
18/12/09	13:00	1.3	348
18/12/09	14:00	2.2	331
18/12/09	15:00	3.1	326
18/12/09	16:00	1.8	330
18/12/09	17:00	1.3	13
18/12/09	18:00	1.3	4
18/12/09	19:00	1.8	18
18/12/09	20:00	1.8	53
18/12/09	21:00	0.9	336
18/12/09	22:00	1.3	27
18/12/09	23:00	1.3	44

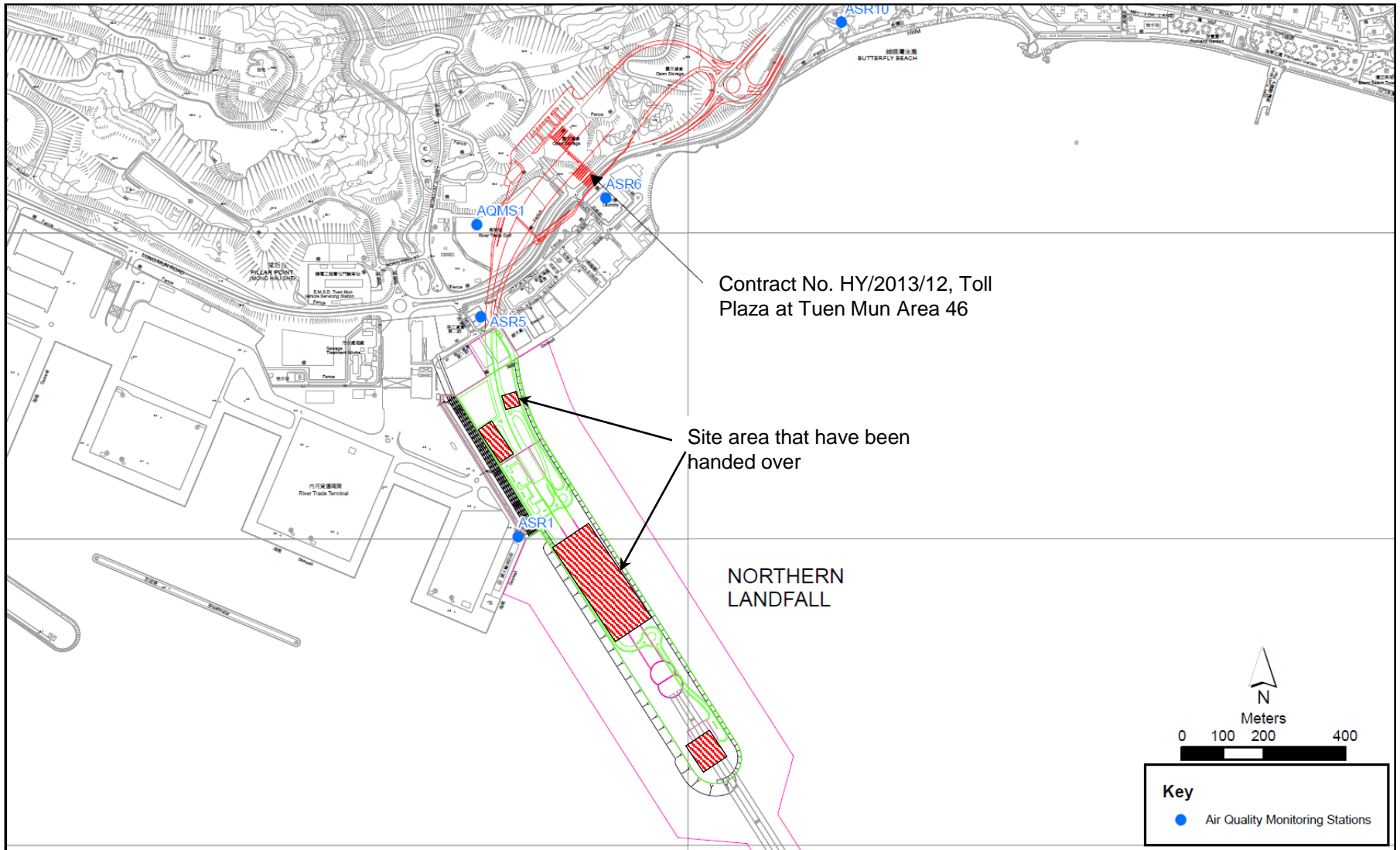


Figure 1

No construction works was carried out on 9 December 2018

Email  
message

**Environmental  
Resources  
Management**

**To** Ramboll Hong Kong, Limited (ENPO)

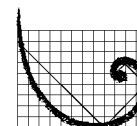
**From** ERM- Hong Kong, Limited

**Ref/Project number** Contract No. HY/2012/08 Tuen Mun–Chek Lap  
Kok Link–Northern Connection Sub-sea Tunnel  
Section

**Subject** Notification of Exceedance for Air Quality  
Impact Monitoring

**Date** 24 December 2018

2507, 25/F One Harbourfront  
18 Tak Fung Street  
Hung Hom, Kowloon  
Hong Kong  
Telephone: (852) 2271 3000  
Facsimile: (852) 2723 5660



**ERM**

---

Dear Sir or Madam,

Please find attached the Notification of Exceedance (NOE) of the following  
Log no.:

**0212330\_12December2018\_1hrTSP\_Station ASR1**

One Action Level Exceedance was recorded on 12 December 2018.

Regards,

A handwritten signature in black ink that reads "Jasmine".

Dr Jasmine Ng  
Environmental Team Leader

---

**CONFIDENTIALITY NOTICE**

This facsimile transmission is intended only for the use of the addressee and is confidential. If you are not the addressee it may be unlawful for you to read, copy, distribute, disclose or otherwise use the information in this facsimile. If you are not the intended recipient, please telephone or fax us.

---



**ERM-Hong Kong, Limited**

**CONTRACT NO. HY/2012/08  
TUEN MUN – CHEK LAP KOK LINK –  
NORTHERN CONNECTION SUB-SEA TUNNEL SECTION**

**Air Quality Impact Monitoring  
Notification of Exceedance**

<b>Log No.</b>	0212330_12December2018_1hrTSP_Station ASR1 [Total No. of Exceedances = 1]	
<b>Date</b>	12 December 2018 (Measured) 24 December 2018 (Laboratory results received by ERM)	
<b>Monitoring Station</b>	ASR1, ASR5, ASR6, ASR10 and AQMS1	
<b>Parameter(s) with Exceedance(s)</b>	1-hr TSP	
<b>Action Levels</b>	24-hr TSP ( $\mu\text{g}/\text{m}^3$ )	ASR1 = 213 ASR5 = 238 AQMS1 = 213 ASR6 = 238 ASR10 = 214
	1-hr TSP ( $\mu\text{g}/\text{m}^3$ )	ASR1 = 331 ASR5 = 340 AQMS1 = 335 ASR6 = 338 ASR10 = 337
<b>Limit Levels</b>	1-hr TSP ( $\mu\text{g}/\text{m}^3$ )	500
	24-hr TSP ( $\mu\text{g}/\text{m}^3$ )	260
<b>Measured Levels</b>	Action Level Exceedance for 1-hr TSP is observed at ASR1 ( $414 \mu\text{g}/\text{m}^3$ ) during 1331 - 1431 hrs.	
<b>Works Undertaken (at the time of monitoring event)</b>	On 12 December 2018, TBM tunnel works and surcharge removal was carried out at Portion N-C on the site.	
<b>Possible Reason for Action or Limit Level Exceedance(s)</b>	<p>The exceedance is unlikely to be due to this Contract, in view of the following:</p> <ul style="list-style-type: none"> <li>According to the construction information provided by the Contractor, the majority of construction works on 12 December 2018 was TBM tunnel works and surcharge removal. During the period of the land-based construction works, the Contractor has implemented the required mitigation measures as per the EP, approved EIA and Updated EM&amp;A Manual (e.g. water spraying on exposed soil within the site and associated works areas; exposed soil covered by tarpaulin sheets).</li> <li>The exceedance is unlikely to be due to this Contract as dust suppression measures were implemented properly on site. Water spraying was applied on site to prevent dust.</li> </ul> <p>Based on the above, the exceedances are unlikely to be due to this Contract.</p>	

<b>Actions Taken/ To Be Taken</b>	<p>According to the construction information provided by the Contractor, TBM tunnel works and surcharge removal was carried out on 12 December 2018. Dust suppression measures were properly implemented. Water spraying was applied to prevent dust. Photos are provided in Annex A. Photos taken during AQM are also provided in Annex A.</p> <p>The Contractor has been reminded to implement the required mitigation measures as per the EP, approved EIA and Updated EM&amp;A Manual including watering to maintain all exposed road surfaces and dust sources wet, use of sprinklers for water spraying, covering the materials having the potential to create dust by clean tarpaulin, use of water truck and watering on all exposed soil within the site) throughout the construction period.</p>
<b>Remarks</b>	<p>The monitoring results and the locations of air quality monitoring stations are attached.</p>



## Annex A Photos provided by the Contractor

\*Note: Photos taken on 12/12/2018



Water truck was used for dust control during surcharge removal. (Works Area Portion N-C)



Water spraying was applied on the main haul road. (Works Area Portion N-C)



**Annex A      Photos taken during AQM**

\*Note: Photos taken on 12/12/2018



No significant dust impact was observed during AQM at ASR1.

Air quality monitoring results on 12/12/2018								
Project	Works	Date	Station	Weather	Start time	Parameters	Results	Unit
TMCLKL	HY/2012/08	12/12/2018	AQMS1	Cloudy	13:41	1-hour TSP	95	ug/m3
TMCLKL	HY/2012/08	12/12/2018	AQMS1	Cloudy	14:43	1-hour TSP	79	ug/m3
TMCLKL	HY/2012/08	12/12/2018	AQMS1	Cloudy	15:45	1-hour TSP	95	ug/m3
TMCLKL	HY/2012/08	12/12/2018	ASR1	Cloudy	13:31	1-hour TSP	414	ug/m3
TMCLKL	HY/2012/08	12/12/2018	ASR1	Cloudy	14:33	1-hour TSP	174	ug/m3
TMCLKL	HY/2012/08	12/12/2018	ASR1	Cloudy	15:35	1-hour TSP	142	ug/m3
TMCLKL	HY/2012/08	12/12/2018	ASR10	Cloudy	13:00	1-hour TSP	112	ug/m3
TMCLKL	HY/2012/08	12/12/2018	ASR10	Cloudy	14:02	1-hour TSP	77	ug/m3
TMCLKL	HY/2012/08	12/12/2018	ASR10	Cloudy	15:04	1-hour TSP	80	ug/m3
TMCLKL	HY/2012/08	12/12/2018	ASR5	Cloudy	13:20	1-hour TSP	340	ug/m3
TMCLKL	HY/2012/08	12/12/2018	ASR5	Cloudy	14:22	1-hour TSP	171	ug/m3
TMCLKL	HY/2012/08	12/12/2018	ASR5	Cloudy	15:24	1-hour TSP	168	ug/m3
TMCLKL	HY/2012/08	12/12/2018	ASR6	Cloudy	13:10	1-hour TSP	230	ug/m3
TMCLKL	HY/2012/08	12/12/2018	ASR6	Cloudy	14:12	1-hour TSP	111	ug/m3
TMCLKL	HY/2012/08	12/12/2018	ASR6	Cloudy	15:14	1-hour TSP	106	ug/m3
TMCLKL	HY/2012/08	12/12/2018	AQMS1	Cloudy	16:47	24-hour TSP	73	ug/m3
TMCLKL	HY/2012/08	12/12/2018	ASR1	Cloudy	16:27	24-hour TSP	126	ug/m3
TMCLKL	HY/2012/08	12/12/2018	ASR10	Cloudy	16:06	24-hour TSP	69	ug/m3
TMCLKL	HY/2012/08	12/12/2018	ASR5	Cloudy	16:26	24-hour TSP	142	ug/m3
TMCLKL	HY/2012/08	12/12/2018	ASR6	Cloudy	16:16	24-hour TSP	93	ug/m3



**Meteorological Data for Impact Monitoring in the reporting period**

<b>Date (yy-mm-dd)</b>	<b>Time (24hrs)</b>	<b>Average of Wind Speed (m/s)</b>	<b>Average of Wind Direction(degree)</b>
18/12/12	0:00	1.8	313
18/12/12	1:00	1.8	282
18/12/12	2:00	1.8	297
18/12/12	3:00	1.8	306
18/12/12	4:00	1.8	316
18/12/12	5:00	0.9	348
18/12/12	6:00	1.3	281
18/12/12	7:00	1.3	55
18/12/12	8:00	1.8	295
18/12/12	9:00	1.3	298
18/12/12	10:00	1.8	19
18/12/12	11:00	1.3	344
18/12/12	12:00	0.9	321
18/12/12	13:00	1.3	347
18/12/12	14:00	2.2	304

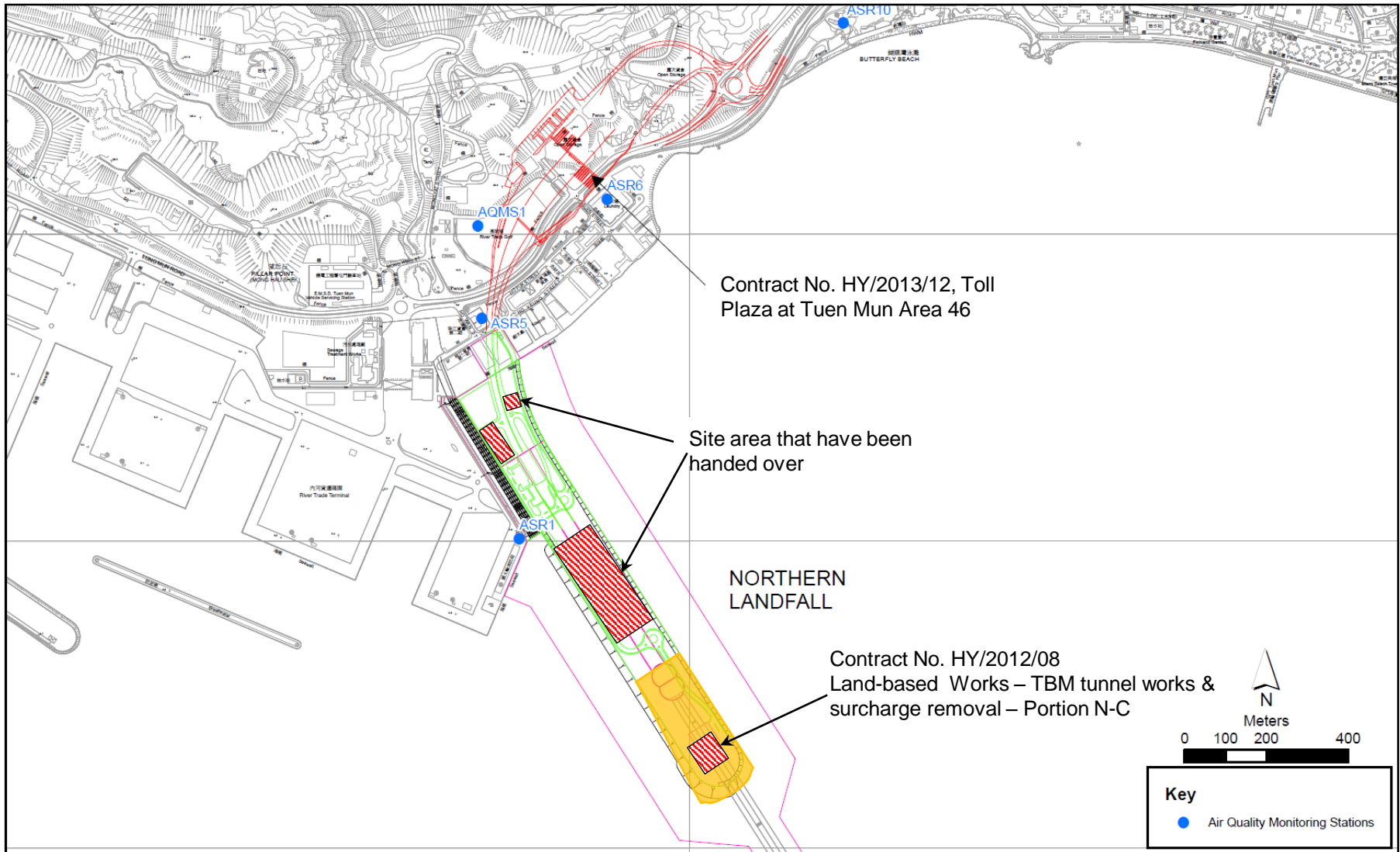


Figure 1

Indicative Construction Works Area on 12 December 2018

Email  
message

**Environmental  
Resources  
Management**

**To** Ramboll Hong Kong, Limited (ENPO)

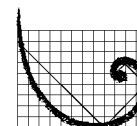
**From** ERM- Hong Kong, Limited

**Ref/Project number** Contract No. HY/2012/08 Tuen Mun–Chek Lap  
Kok Link–Northern Connection Sub-sea Tunnel  
Section

**Subject** Notification of Exceedance for Air Quality  
Impact Monitoring

**Date** 28 December 2018

2507, 25/F One Harbourfront  
18 Tak Fung Street  
Hunghom, Kowloon  
Hong Kong  
Telephone: (852) 2271 3000  
Facsimile: (852) 2723 5660



**ERM**

---

Dear Sir or Madam,

Please find attached the Notification of Exceedance (NOE) of the following  
Log no.:

**0212330\_18December2018\_1hrTSP\_Station ASR6**

One Action Level Exceedance was recorded on 18 December 2018.

Regards,

A handwritten signature in black ink that reads "Jasmine".

Dr Jasmine Ng  
Environmental Team Leader

---

**CONFIDENTIALITY NOTICE**

This facsimile transmission is intended only for the use of the addressee and is confidential. If you are not the addressee it may be unlawful for you to read, copy, distribute, disclose or otherwise use the information in this facsimile. If you are not the intended recipient, please telephone or fax us.

---



ERM-Hong Kong, Limited

CONTRACT NO. HY/2012/08  
 TUEN MUN – CHEK LAP KOK LINK –  
 NORTHERN CONNECTION SUB-SEA TUNNEL SECTION

Air Quality Impact Monitoring  
 Notification of Exceedance

<b>Log No.</b>	0212330_18December2018_1hrTSP_Station ASR6 [Total No. of Exceedances = 1]	
<b>Date</b>	18 December 2018 (Measured) 26 December 2018 (Laboratory results received by ERM)	
<b>Monitoring Station</b>	ASR1, ASR5, ASR6, ASR10 and AQMS1	
<b>Parameter(s) with Exceedance(s)</b>	1-hr TSP	
<b>Action Levels</b>	24-hr TSP ( $\mu\text{g}/\text{m}^3$ )	ASR1 = 213 ASR5 = 238 AQMS1 = 213 ASR6 = 238 ASR10 = 214
	1-hr TSP ( $\mu\text{g}/\text{m}^3$ )	ASR1 = 331 ASR5 = 340 AQMS1 = 335 ASR6 = 338 ASR10 = 337
<b>Limit Levels</b>	1-hr TSP ( $\mu\text{g}/\text{m}^3$ )	500
	24-hr TSP ( $\mu\text{g}/\text{m}^3$ )	260
<b>Measured Levels</b>	Action Level Exceedance for 1-hr TSP is observed at ASR6 (478 $\mu\text{g}/\text{m}^3$ ) during 1416 - 1516 hrs.	
<b>Works Undertaken (at the time of monitoring event)</b>	On 18 December 2018, TBM tunnel works and surcharge removal was carried out at Portion N-C.	
<b>Possible Reason for Action or Limit Level Exceedance(s)</b>	<p>The exceedance is unlikely to be due to this Contract, in view of the following:</p> <ul style="list-style-type: none"> <li>According to the construction information provided by the Contractor, the majority of construction works on 18 December 2018 was TBM tunnel works and surcharge removal. During the period of the land-based construction works, the Contractor has implemented the required mitigation measures as per the EP, approved EIA and Updated EM&amp;A Manual (e.g. water spraying on exposed soil within the site and associated works areas; exposed soil covered by tarpaulin sheets).</li> <li>The exceedance is unlikely to be due to this Contract as dust suppression measures were implemented properly on site. Water spraying was applied on site to prevent dust.</li> </ul> <p>Based on the above, the exceedances are unlikely to be due to this Contract.</p>	

<b>Actions Taken/ To Be Taken</b>	<p>According to the construction information provided by the Contractor, TBM tunnel works and surcharge removal was carried out on 18 December 2018. Dust suppression measures were properly implemented. Water spraying was applied to prevent dust. Photos are provided in Annex A.</p> <p>The Contractor has been reminded to implement the required mitigation measures as per the EP, approved EIA and Updated EM&amp;A Manual including watering to maintain all exposed road surfaces and dust sources wet, use of sprinklers for water spraying, covering the materials having the potential to create dust by clean tarpaulin, use of water truck and watering on all exposed soil within the site) throughout the construction period.</p>
<b>Remarks</b>	<p>The monitoring results, wind data and the locations of air quality monitoring stations are attached.</p>



**Annex A      Photos provided by the Contractor**

\*Note: Photos taken on 18/12/2018



Water spraying was applied on the main haul road. (Works Area Portion N-A)



Water spraying was applied on the main haul road. (Works Area Portion N-A)



**Annex A      Photos provided by the Contractor**

\*Note: Photos taken on 18/12/2018



Water spraying was applied on the main haul road. (Works Area Portion N-A)



Water spraying was applied on the main haul road. (Works Area Portion N-C)

Air quality monitoring results on 18/12/2018								
Project	Works	Date	Station	Weather	Start time	Parameters	Results	Unit
TMCLKL	HY/2012/08	18/12/2018	AQMS1	Sunny	13:49	1-hour TSP	118	ug/m3
TMCLKL	HY/2012/08	18/12/2018	AQMS1	Sunny	14:51	1-hour TSP	188	ug/m3
TMCLKL	HY/2012/08	18/12/2018	AQMS1	Sunny	15:53	1-hour TSP	151	ug/m3
TMCLKL	HY/2012/08	18/12/2018	ASR1	Sunny	13:37	1-hour TSP	207	ug/m3
TMCLKL	HY/2012/08	18/12/2018	ASR1	Sunny	14:39	1-hour TSP	113	ug/m3
TMCLKL	HY/2012/08	18/12/2018	ASR1	Sunny	15:41	1-hour TSP	174	ug/m3
TMCLKL	HY/2012/08	18/12/2018	ASR10	Sunny	13:03	1-hour TSP	126	ug/m3
TMCLKL	HY/2012/08	18/12/2018	ASR10	Sunny	14:05	1-hour TSP	73	ug/m3
TMCLKL	HY/2012/08	18/12/2018	ASR10	Sunny	15:07	1-hour TSP	106	ug/m3
TMCLKL	HY/2012/08	18/12/2018	ASR5	Sunny	13:26	1-hour TSP	311	ug/m3
TMCLKL	HY/2012/08	18/12/2018	ASR5	Sunny	14:30	1-hour TSP	193	ug/m3
TMCLKL	HY/2012/08	18/12/2018	ASR5	Sunny	15:32	1-hour TSP	192	ug/m3
TMCLKL	HY/2012/08	18/12/2018	ASR6	Sunny	13:14	1-hour TSP	224	ug/m3
TMCLKL	HY/2012/08	18/12/2018	ASR6	Sunny	14:16	1-hour TSP	478	ug/m3
TMCLKL	HY/2012/08	18/12/2018	ASR6	Sunny	15:18	1-hour TSP	123	ug/m3
TMCLKL	HY/2012/08	18/12/2018	AQMS1	Sunny	16:55	24-hour TSP	88	ug/m3
TMCLKL	HY/2012/08	18/12/2018	ASR1	Sunny	16:43	24-hour TSP	131	ug/m3
TMCLKL	HY/2012/08	18/12/2018	ASR10	Sunny	16:09	24-hour TSP	66	ug/m3
TMCLKL	HY/2012/08	18/12/2018	ASR5	Sunny	16:34	24-hour TSP	134	ug/m3
TMCLKL	HY/2012/08	18/12/2018	ASR6	Sunny	16:20	24-hour TSP	94	ug/m3



<b>Meteorological Data for Impact Monitoring in the reporting period</b>			
<b>Date (yy-mm-dd)</b>	<b>Time (24hrs)</b>	<b>Average of Wind Speed (m/s)</b>	<b>Average of Wind Direction(degree)</b>
18/12/18	0:00	1.3	339
18/12/18	1:00	0.9	335
18/12/18	2:00	0.4	50
18/12/18	3:00	0.9	335
18/12/18	4:00	0.9	56
18/12/18	5:00	0.4	81
18/12/18	6:00	0.9	81
18/12/18	7:00	0.9	99
18/12/18	8:00	1.3	83
18/12/18	9:00	1.3	86
18/12/18	10:00	1.3	35
18/12/18	11:00	1.8	31
18/12/18	12:00	1.3	130
18/12/18	13:00	3.1	140
18/12/18	14:00	3.6	103
18/12/18	15:00	3.1	114
18/12/18	16:00	4	132
18/12/18	17:00	4	110
18/12/18	18:00	2.7	84
18/12/18	19:00	2.2	101
18/12/18	20:00	1.8	36
18/12/18	21:00	1.8	34
18/12/18	22:00	1.8	43
18/12/18	23:00	1.8	49

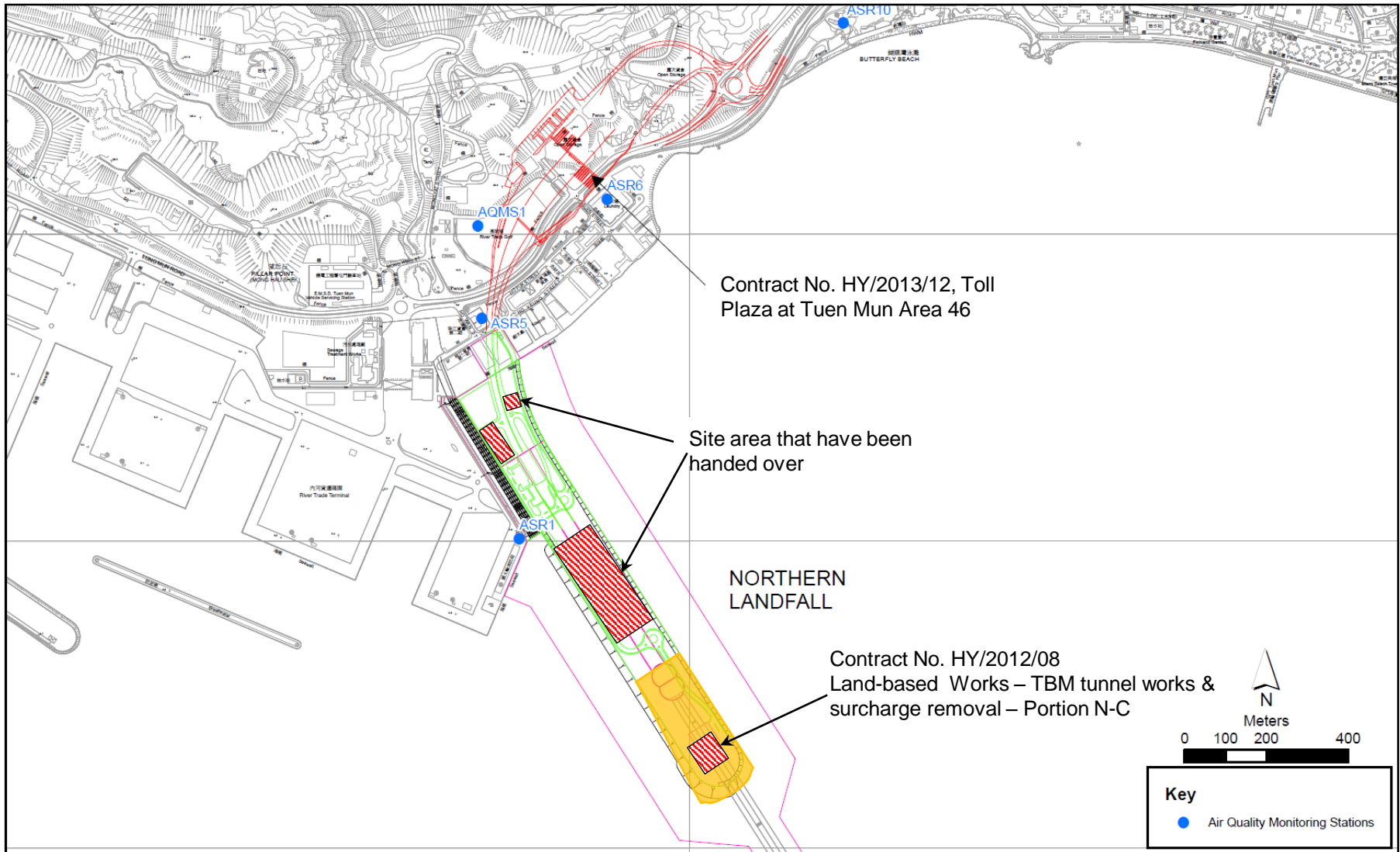


Figure 1

Indicative Construction Works Area on 18 December 2018