

Appendix I

# Impact Dolphin Monitoring Survey



Figure 1. Transect Line Layout in Northwest and Northeast Lantau Survey Areas

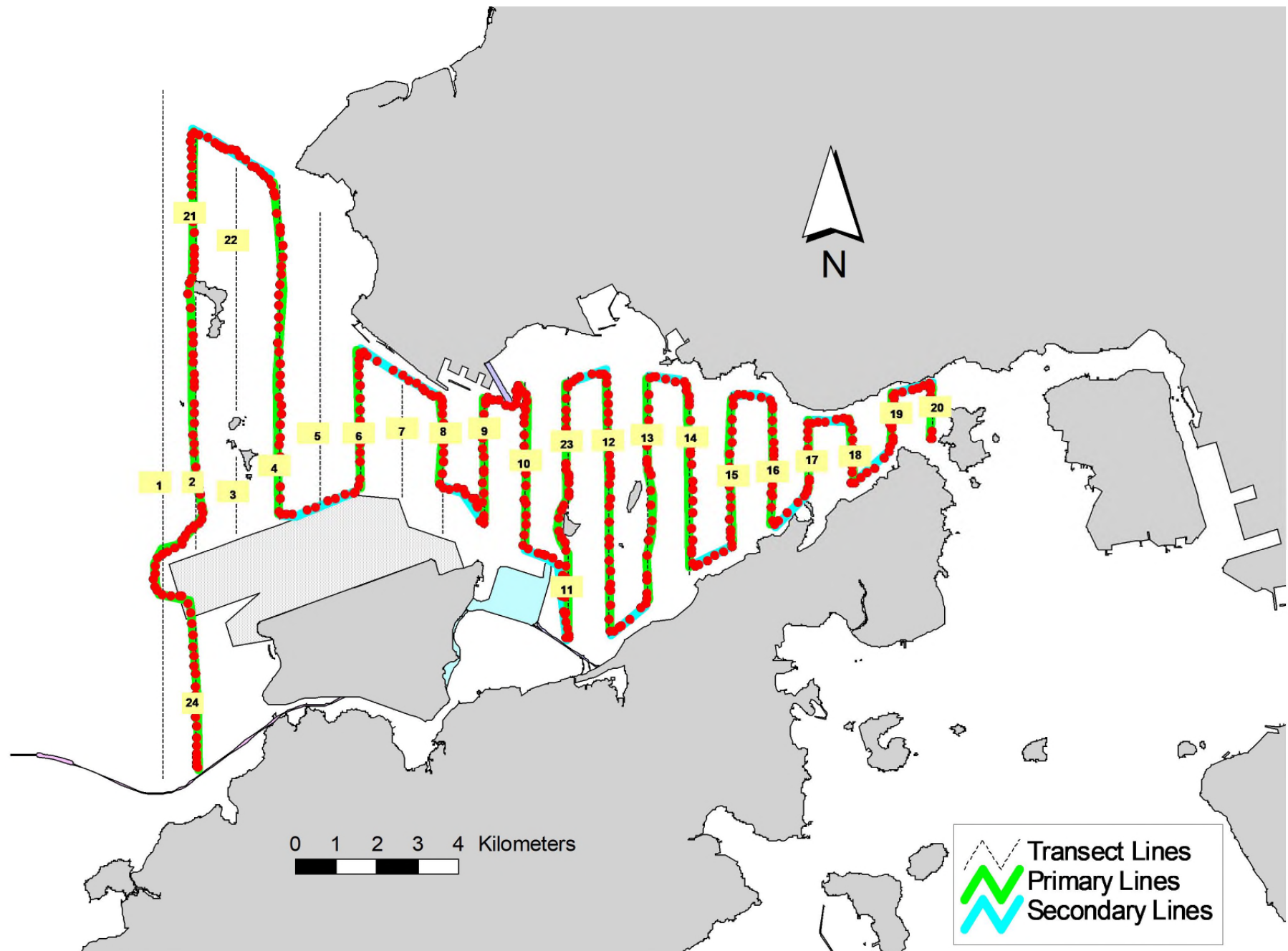


Figure 2. Survey Route on January 2<sup>nd</sup>, 2019 (from HKLR03 project)

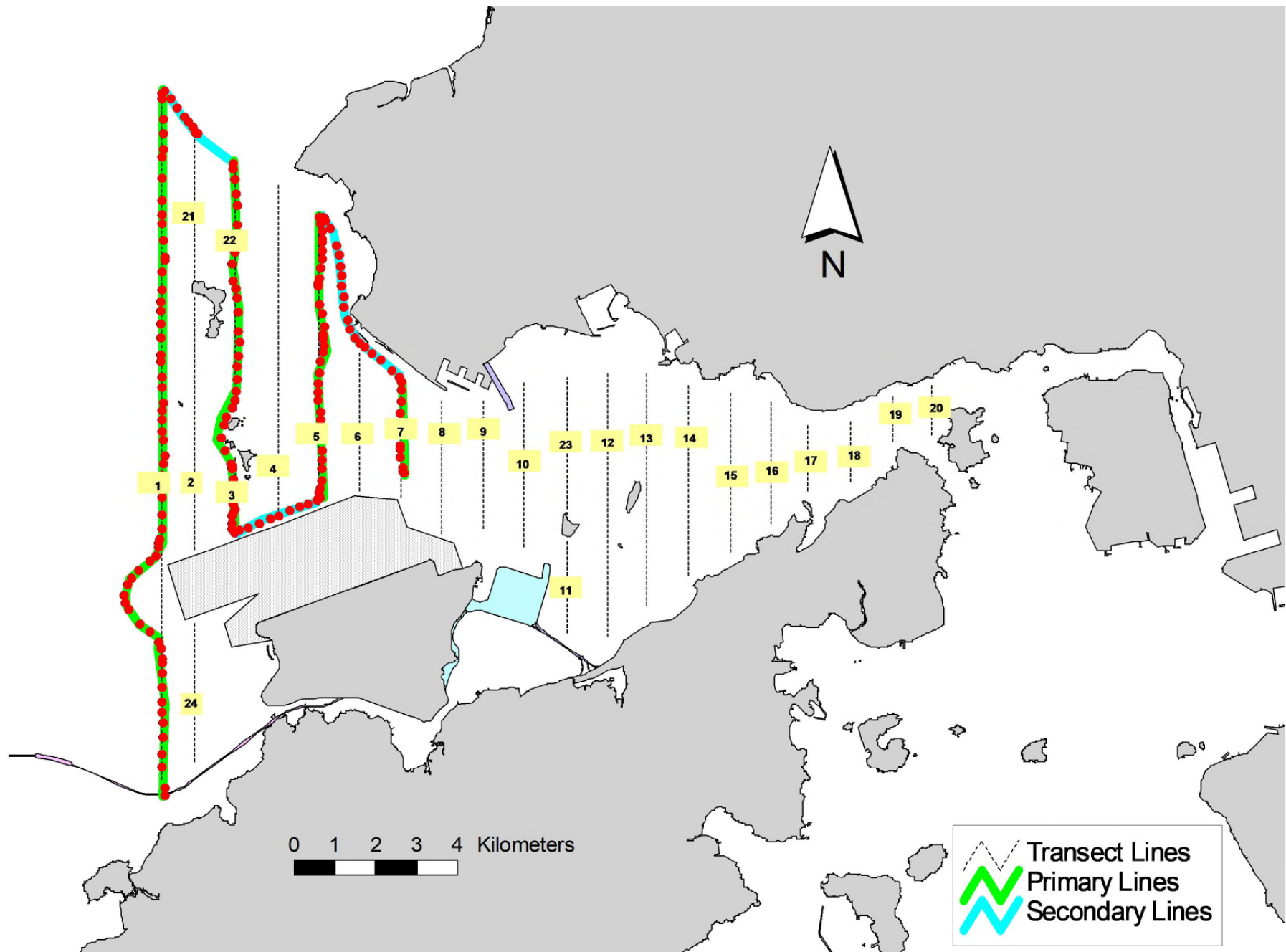


Figure 3. Survey Route on January 3<sup>rd</sup>, 2019 (from HKLR03 project)

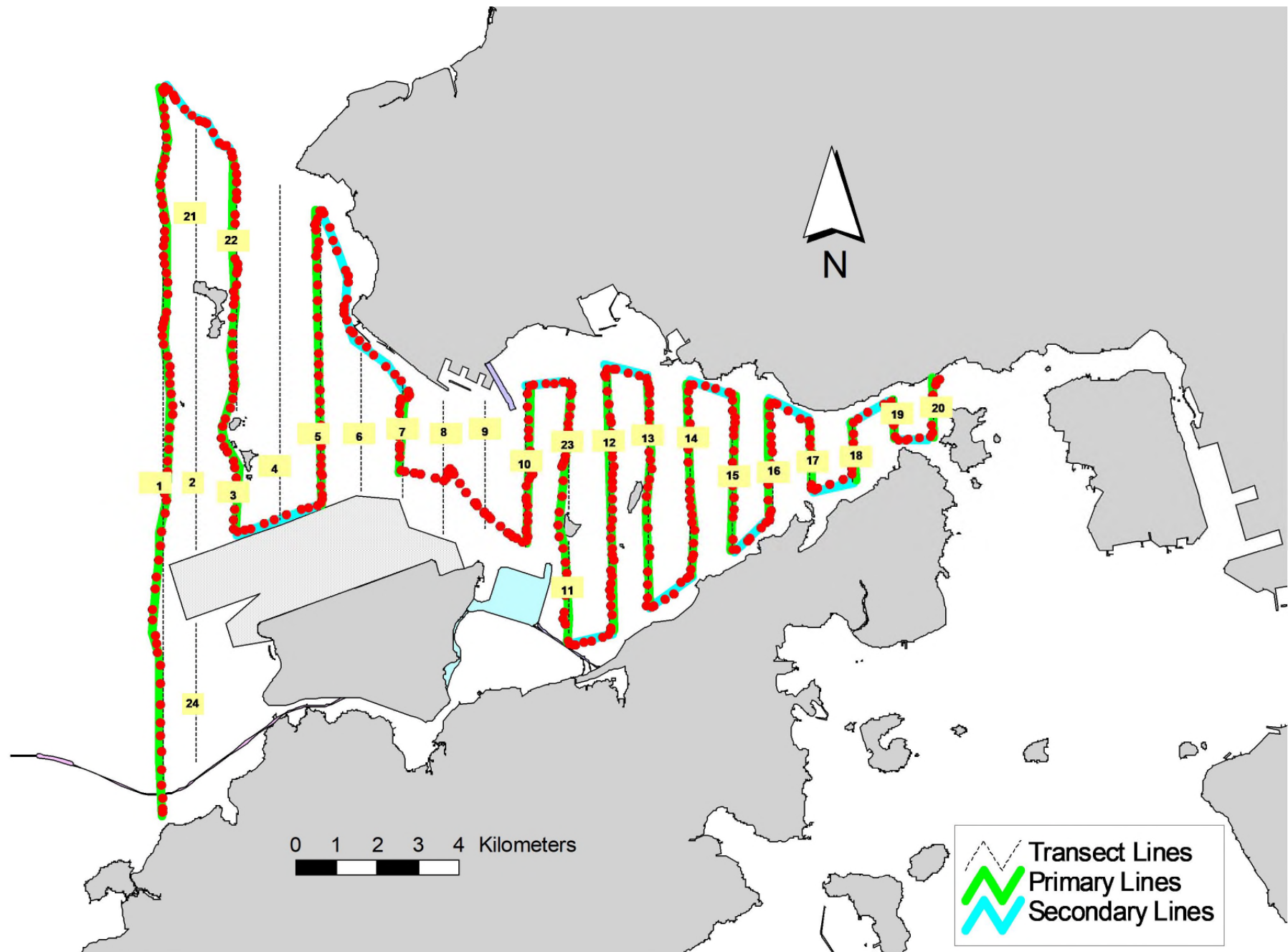


Figure 4. Survey Route on January 7<sup>th</sup>, 2019 (from HKLR03 project)



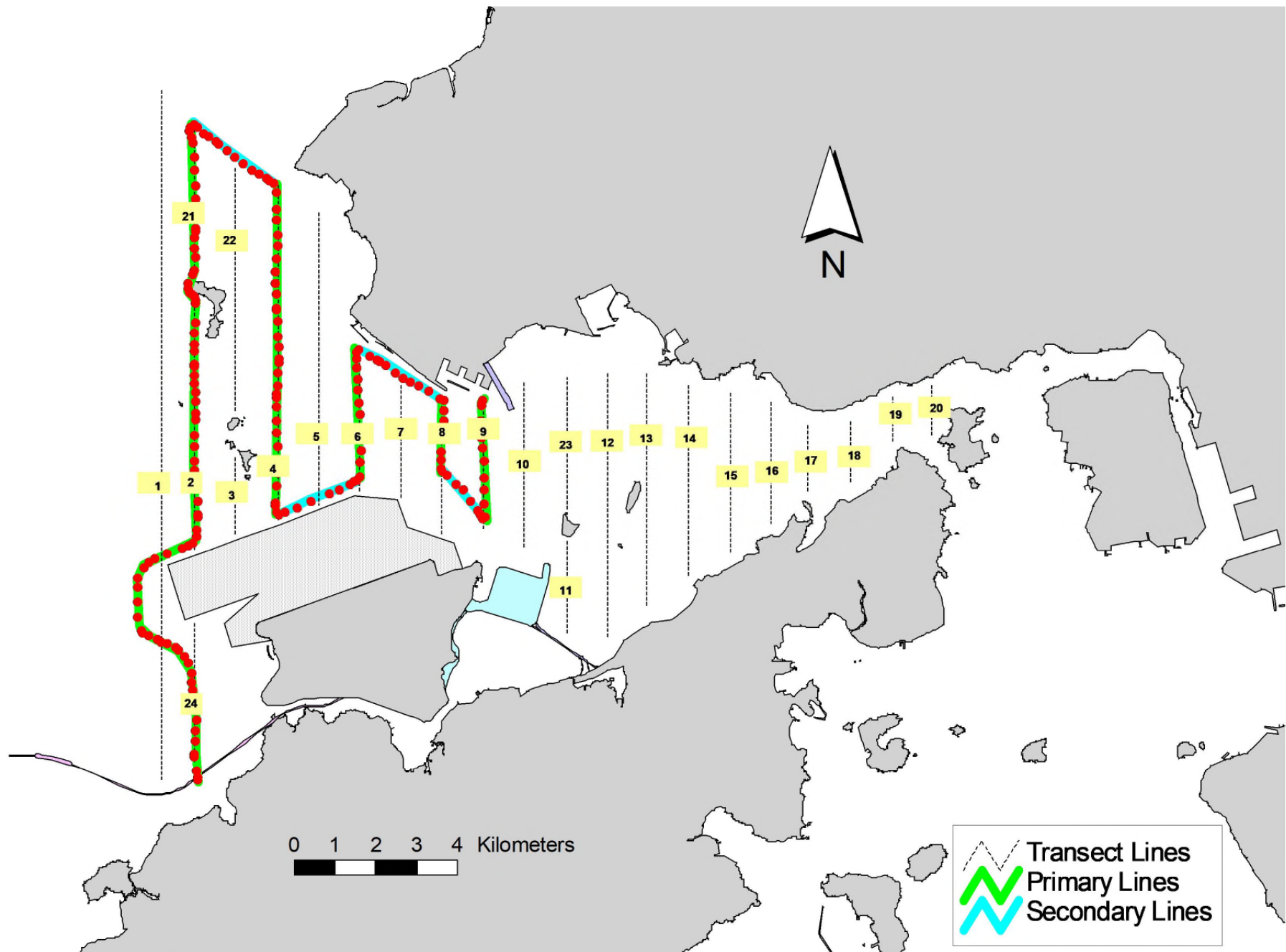


Figure 5. Survey Route on January 14<sup>th</sup>, 2019 (from HKLR03 project)

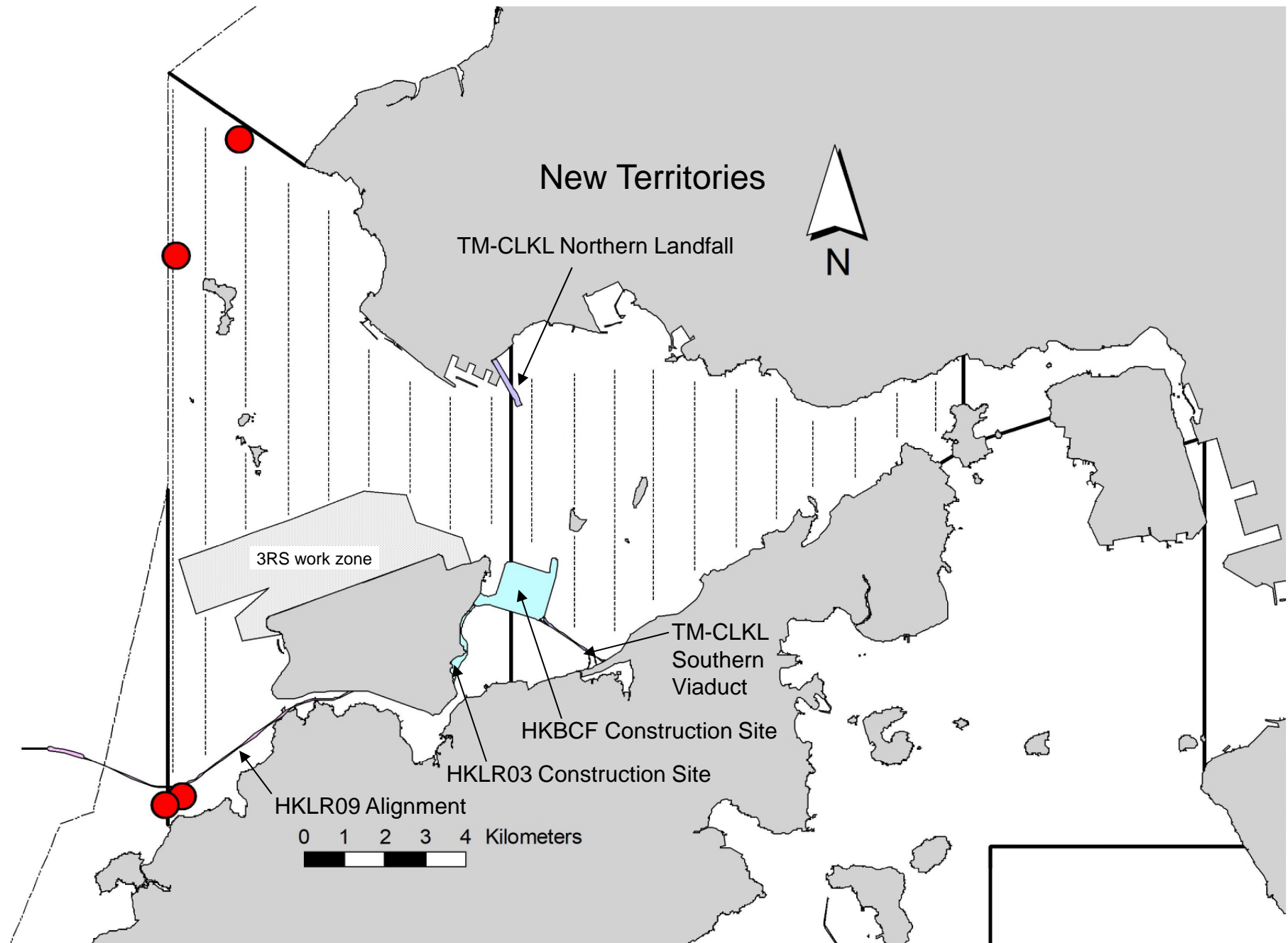


Figure 6. Distribution of Chinese White Dolphin Sightings during January 2019 HKLR03 Monitoring Surveys

## Appendix I. HKLR03 Survey Effort Database (January 2019)

(Abbreviations: BEAU = Beaufort Sea State; P = Primary Line Effort; S = Secondary Line Effort)

DATE	AREA	BEAU	EFFORT	SEASON	VESSEL	TYPE	P/S
2-Jan-19	NW LANTAU	2	5.20	WINTER	STANDARD36826	HKLR	P
2-Jan-19	NW LANTAU	3	23.70	WINTER	STANDARD36826	HKLR	P
2-Jan-19	NW LANTAU	2	5.40	WINTER	STANDARD36826	HKLR	S
2-Jan-19	NW LANTAU	3	3.96	WINTER	STANDARD36826	HKLR	S
2-Jan-19	NW LANTAU	4	2.14	WINTER	STANDARD36826	HKLR	S
2-Jan-19	NE LANTAU	2	17.54	WINTER	STANDARD36826	HKLR	P
2-Jan-19	NE LANTAU	3	17.80	WINTER	STANDARD36826	HKLR	P
2-Jan-19	NE LANTAU	2	8.76	WINTER	STANDARD36826	HKLR	S
2-Jan-19	NE LANTAU	3	5.80	WINTER	STANDARD36826	HKLR	S
3-Jan-19	NW LANTAU	2	31.36	WINTER	STANDARD36826	HKLR	P
3-Jan-19	NW LANTAU	2	11.88	WINTER	STANDARD36826	HKLR	S
7-Jan-19	NW LANTAU	2	21.80	WINTER	STANDARD36826	HKLR	P
7-Jan-19	NW LANTAU	3	10.90	WINTER	STANDARD36826	HKLR	P
7-Jan-19	NW LANTAU	2	2.20	WINTER	STANDARD36826	HKLR	S
7-Jan-19	NW LANTAU	3	9.60	WINTER	STANDARD36826	HKLR	S
7-Jan-19	NE LANTAU	2	35.83	WINTER	STANDARD36826	HKLR	P
7-Jan-19	NE LANTAU	2	12.07	WINTER	STANDARD36826	HKLR	S
14-Jan-19	NW LANTAU	2	26.88	WINTER	STANDARD36826	HKLR	P
14-Jan-19	NW LANTAU	2	13.92	WINTER	STANDARD36826	HKLR	S



**Appendix II. HKLR03 Chinese White Dolphin Sighting Database (January 2019)**

(Abbreviations: STG# = Sighting Number; HRD SZ = Dolphin Herd Size; BEAU = Beaufort Sea State; PSD = Perpendicular Distance; BOAT ASSOC. = Fishing Boat Association; P/S: Sighting Made on Primary/Secondary Lines)

DATE	STG #	TIME	HRD SZ	AREA	BEAU	PSD	EFFORT	TYPE	NORTHING	EASTING	SEASON	BOAT ASSOC.	P/S
3-Jan-19	1	1151	7	NW LANTAU	2	614	ON	HKLR	830239	806267	WINTER	NONE	P
3-Jan-19	2	1234	2	NW LANTAU	2	71	ON	HKLR	827529	804728	WINTER	NONE	P
14-Jan-19	1	1319	2	NW LANTAU	2	ND	OFF	HKLR	814949	804866	WINTER	NONE	
14-Jan-19	2	1336	3	NW LANTAU	2	ND	OFF	HKLR	814739	804443	WINTER	NONE	

**Appendix III. Individual dolphins identified during HKLR03 monitoring surveys in (January 2019)**

<b>ID#</b>	<b>DATE</b>	<b>STG#</b>	<b>AREA</b>
CH34	03/01/19	1	NW LANTAU
NL33	03/01/19	1	NW LANTAU
	14/01/19	2	NW LANTAU
NL98	03/01/19	2	NW LANTAU
NL136	03/01/19	1	NW LANTAU
NL182	03/01/19	1	NW LANTAU
NL202	03/01/19	1	NW LANTAU
NL259	14/01/19	2	NW LANTAU
NL322	03/01/19	1	NW LANTAU
	14/01/19	2	NW LANTAU
WL98	14/01/19	1	NW LANTAU
WL273	03/01/19	1	NW LANTAU



Appendix IV. Photographs of Identified Individual Dolphins in January 2019 (HKLR03)



Appendix IV. (cont'd)