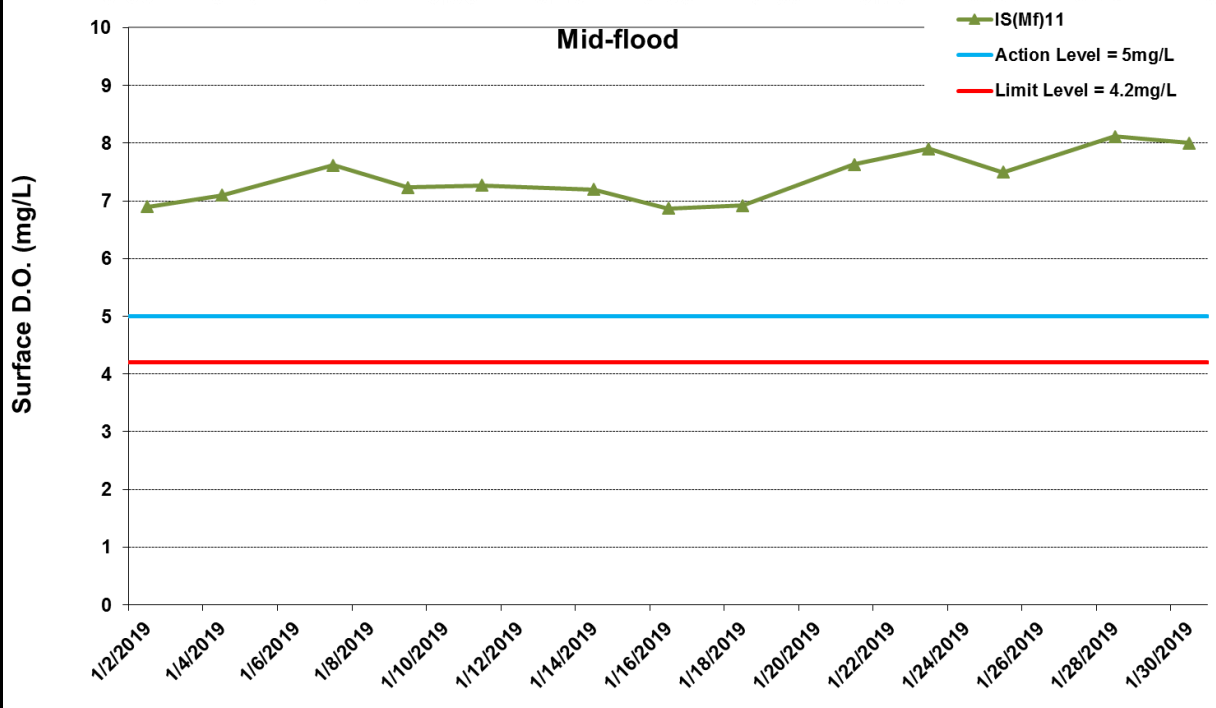
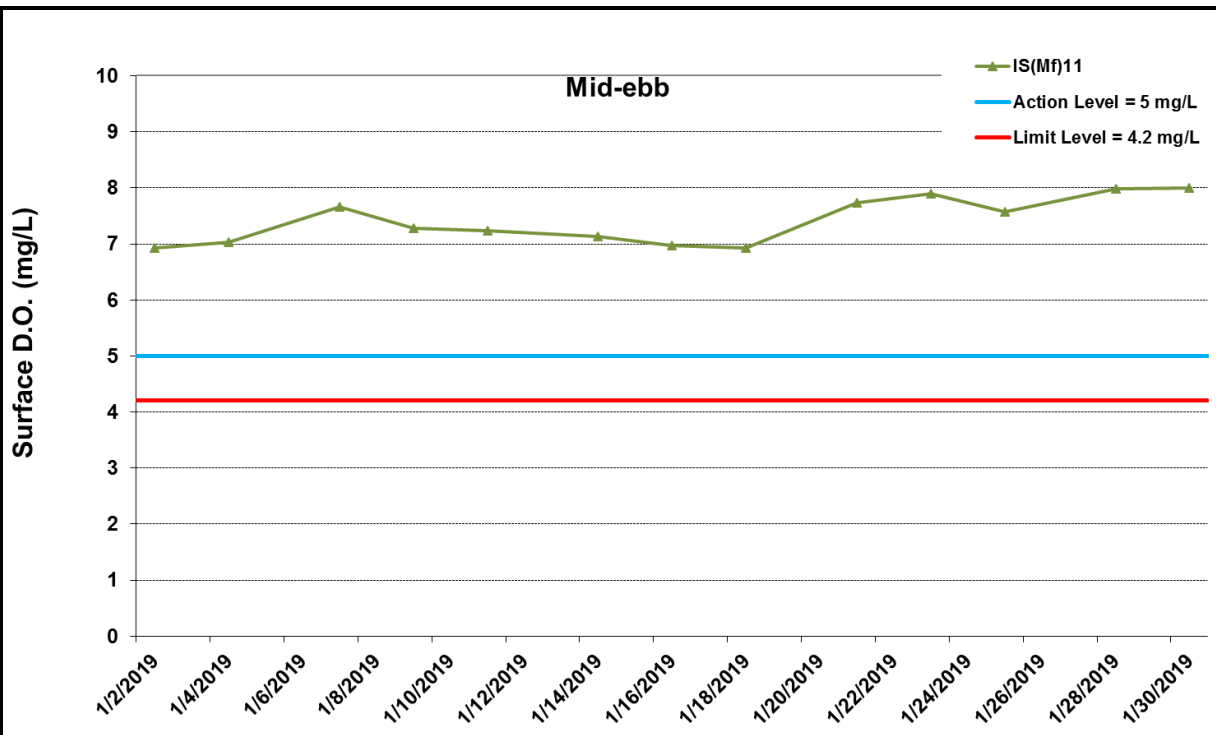


Appendix J

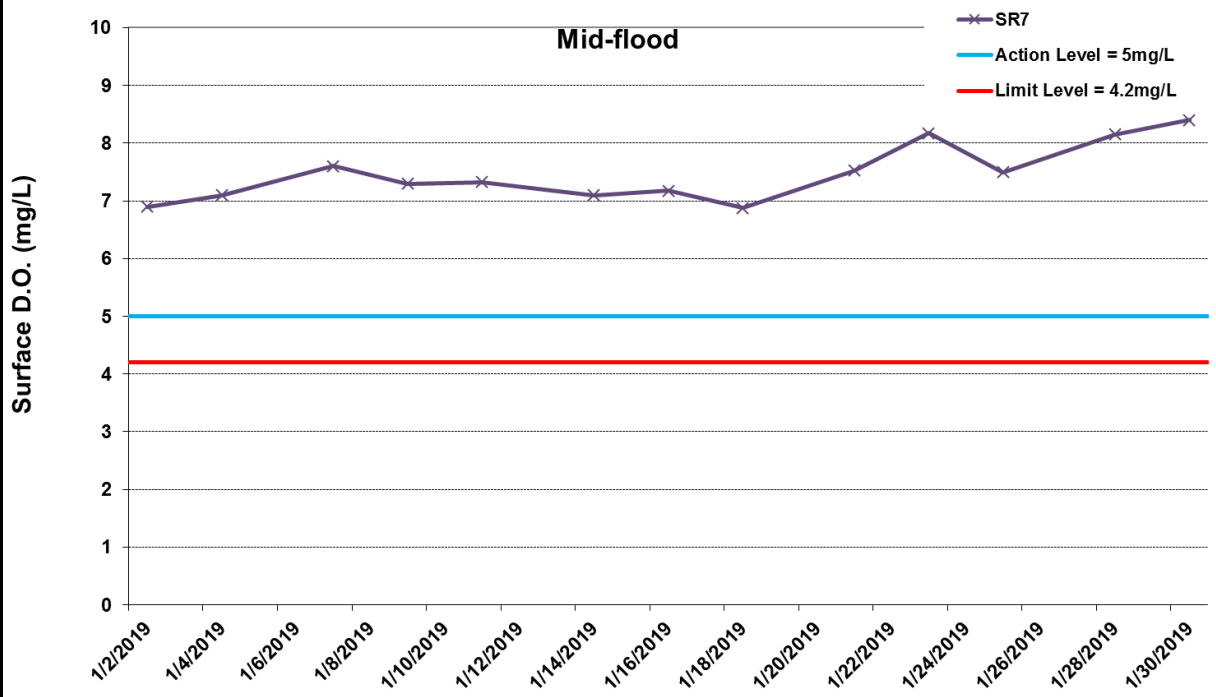
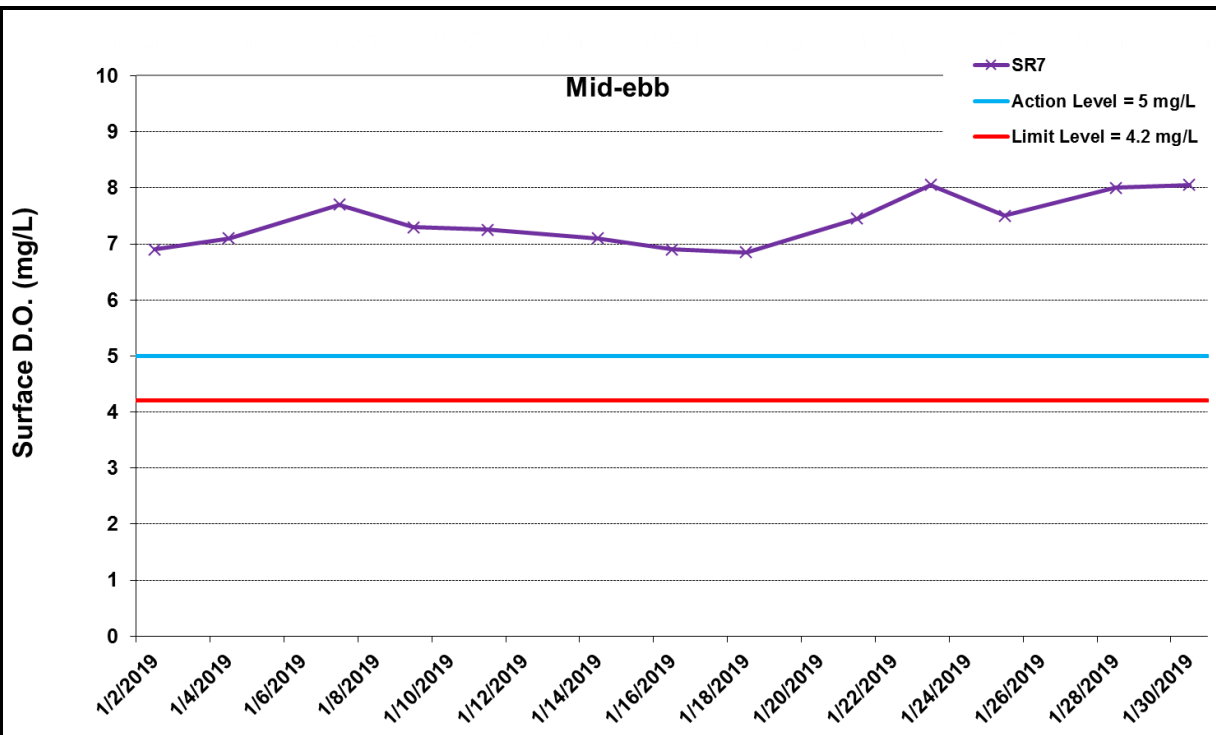
## Impact Water Quality Monitoring Results



\* The AL/LL for WQM stations, IS(Mf)11, IS17 and SR7, are adopted from HZMB HKBCF project.

**Figure J1 Impact Monitoring - Mean Level of Dissolved Oxygen (mg/L) in surface waters between 1 January 2019 and 31 January 2019 at IS(Mf)11. The weather conditions during the monitoring period varied mostly from sunny to cloudy. Major marine works included: Seawall Modification works at Southern Landfall (1/1/2019 - 31/1/2019).**

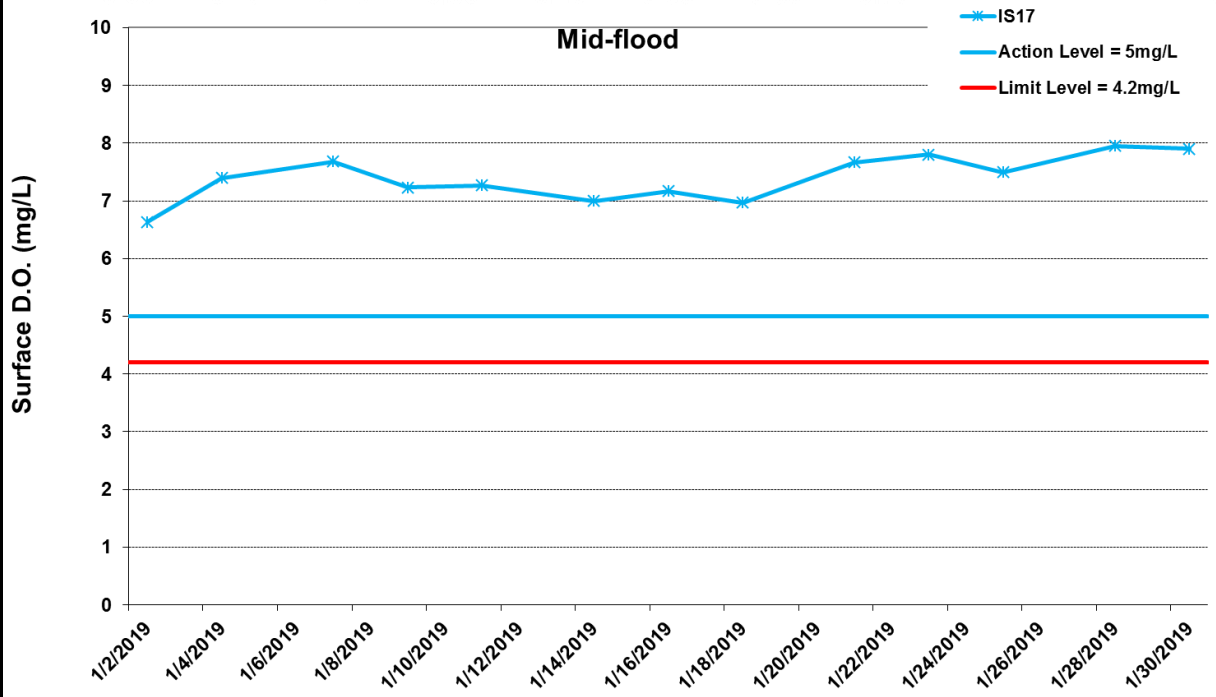
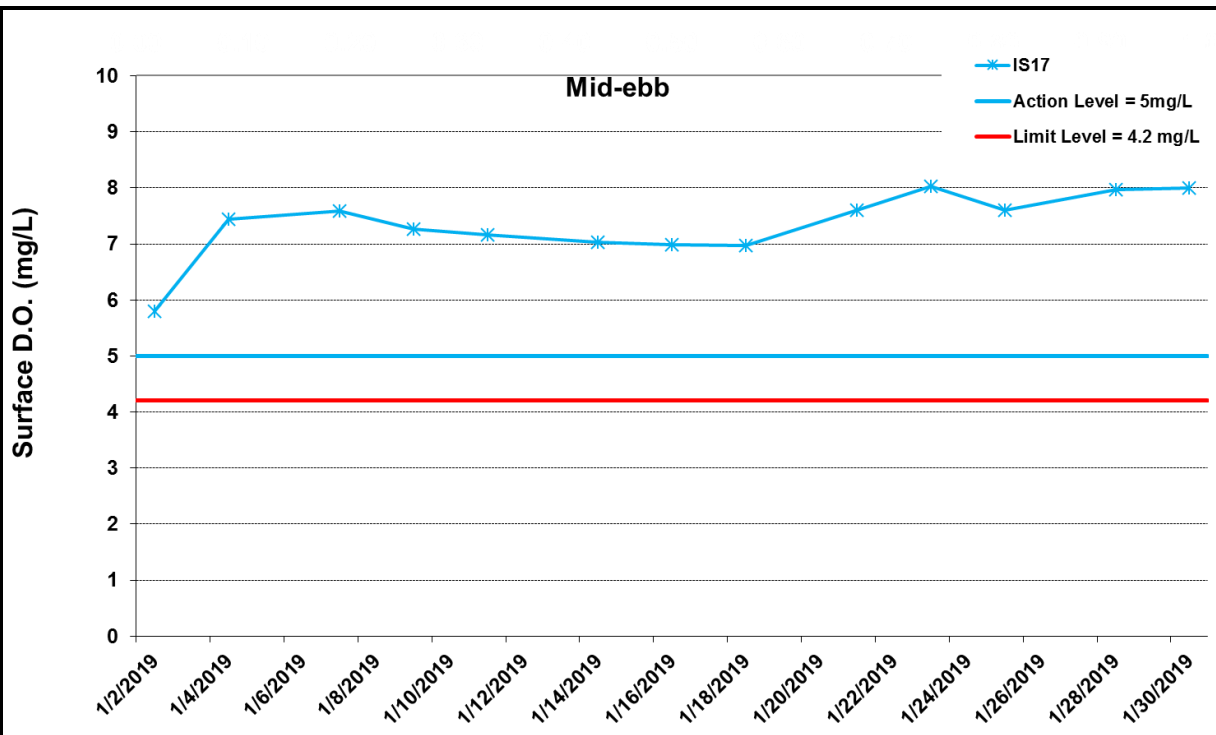




\* The AL/LL for WQM stations, IS(Mf)11, IS17 and SR7, are adopted from HZMB HKBCF project.

**Figure J2 Impact Monitoring - Mean Level of Dissolved Oxygen (mg/L) in surface waters between 1 January 2019 and 31 January 2019 at SR7. The weather conditions during the monitoring period varied mostly from sunny to cloudy. Major marine works included: Seawall Modification works at Southern Landfall (1/1/2019 - 31/1/2019).**

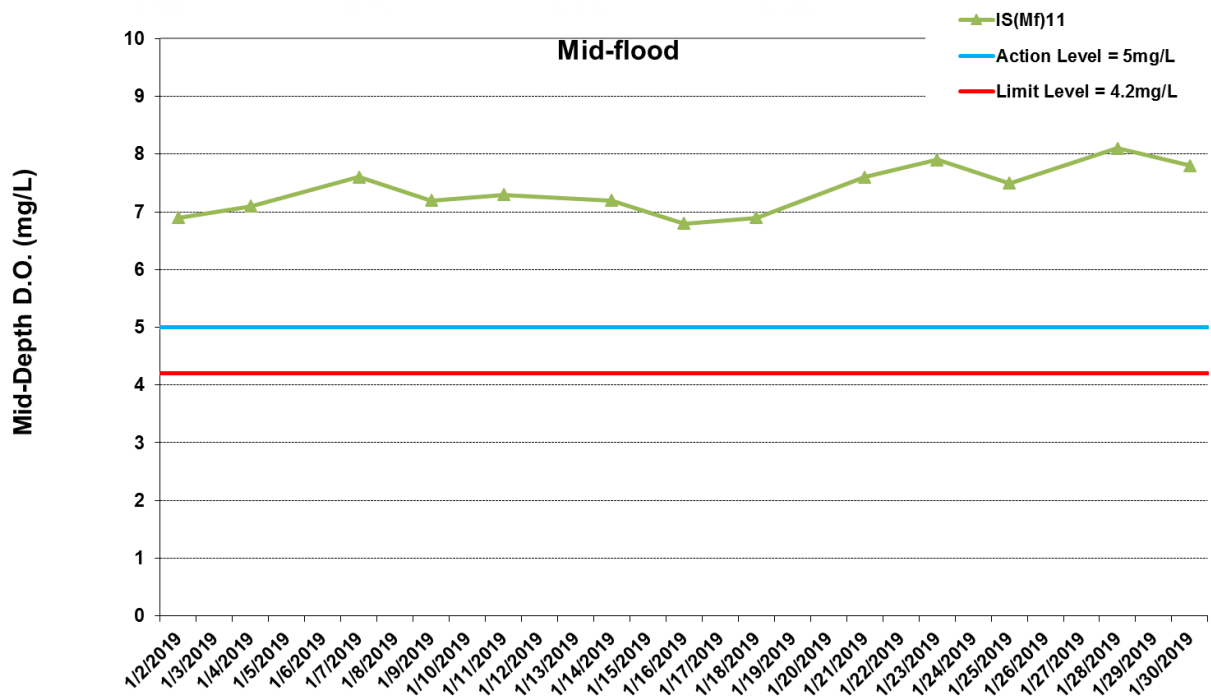
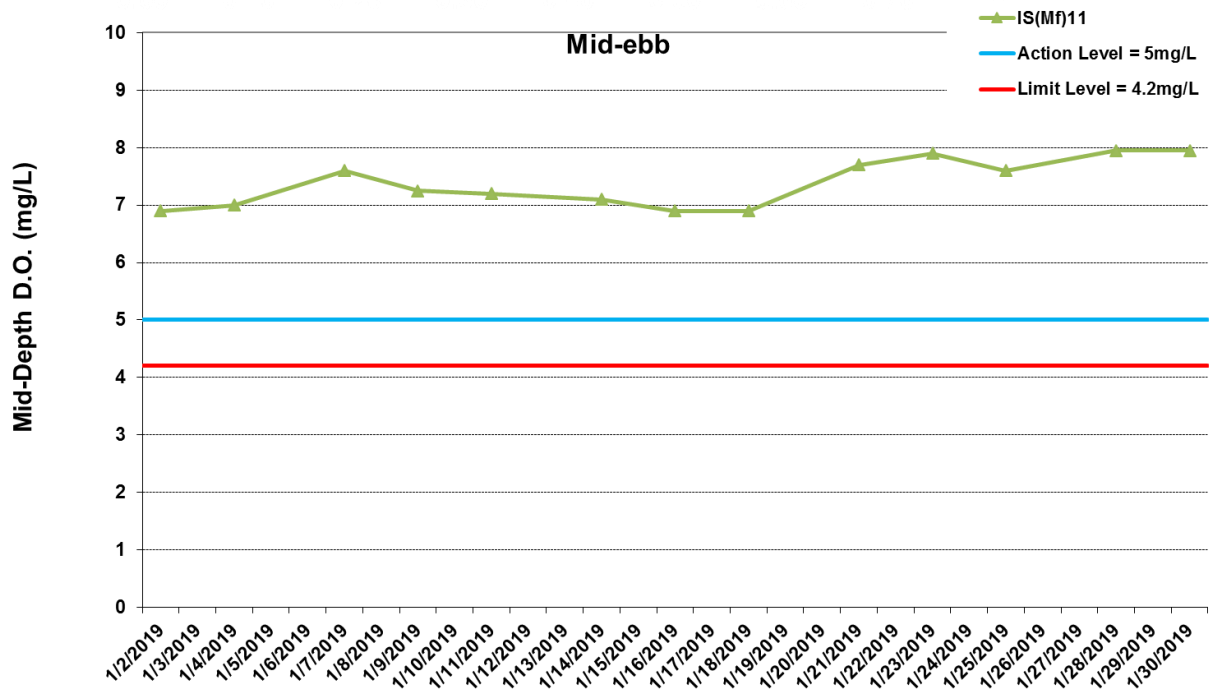




\* The AL/LL for WQM stations, IS(Mf)11, IS17 and SR7, are adopted from HZMB HKBCF project.

**Figure J3 Impact Monitoring - Mean Level of Dissolved Oxygen (mg/L) in surface waters between 1 January 2019 and 31 January 2019 at IS17. The weather conditions during the monitoring period varied mostly from sunny to cloudy. Major marine works included: Seawall Modification works at Southern Landfall (1/1/2019 - 31/1/2019).**



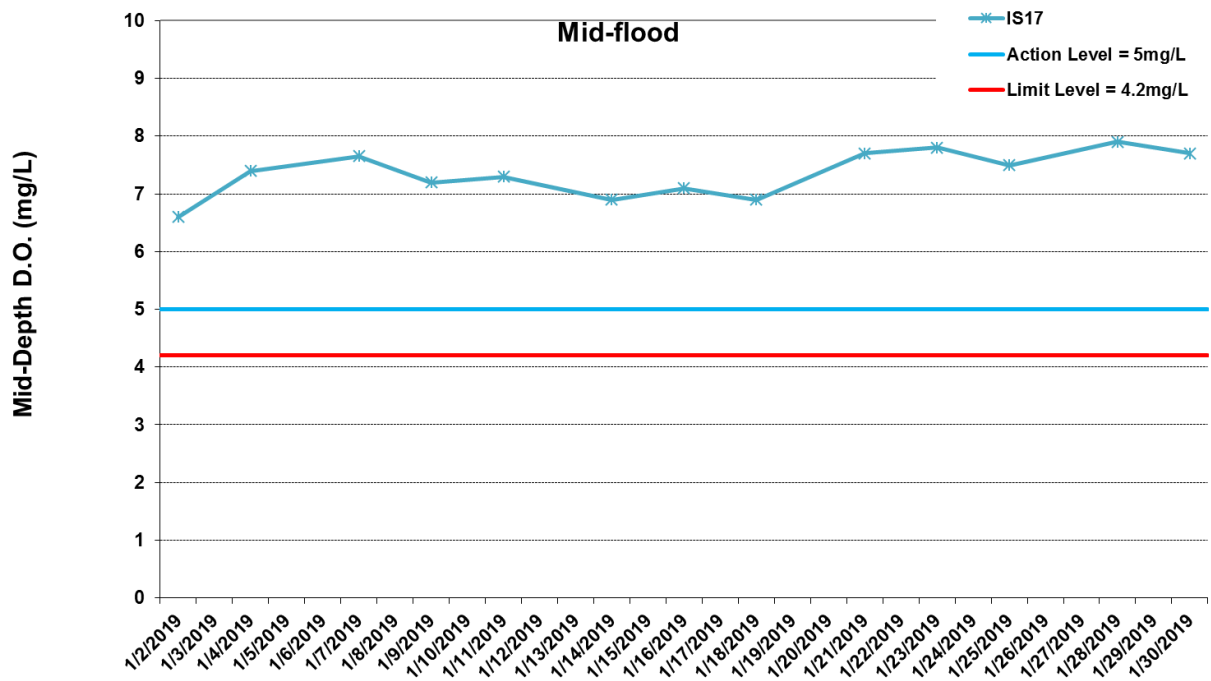
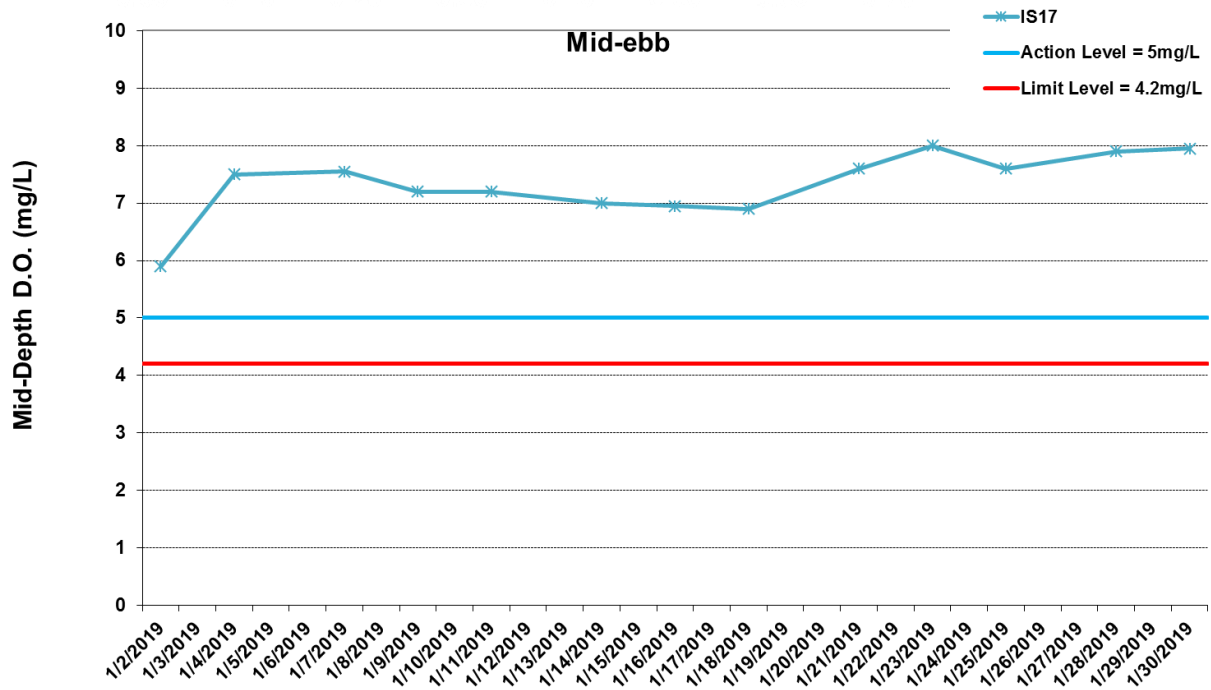


\* The AL/LL for WQM stations, IS(Mf)11, IS17 and SR7, are adopted from HZMB HKBCF project.

\*No data for Stations SR7 due to shallow water depth (< 6m).

**Figure J4 Impact Monitoring - Mean Level of Dissolved Oxygen (mg/L) in mid-depth waters between 1 January 2019 and 31 January 2019 at IS(Mf)11. The weather conditions during the monitoring period varied mostly from sunny to cloudy. Major marine works included: Seawall Modification works at Southern Landfall (1/1/2019 - 31/1/2019).**



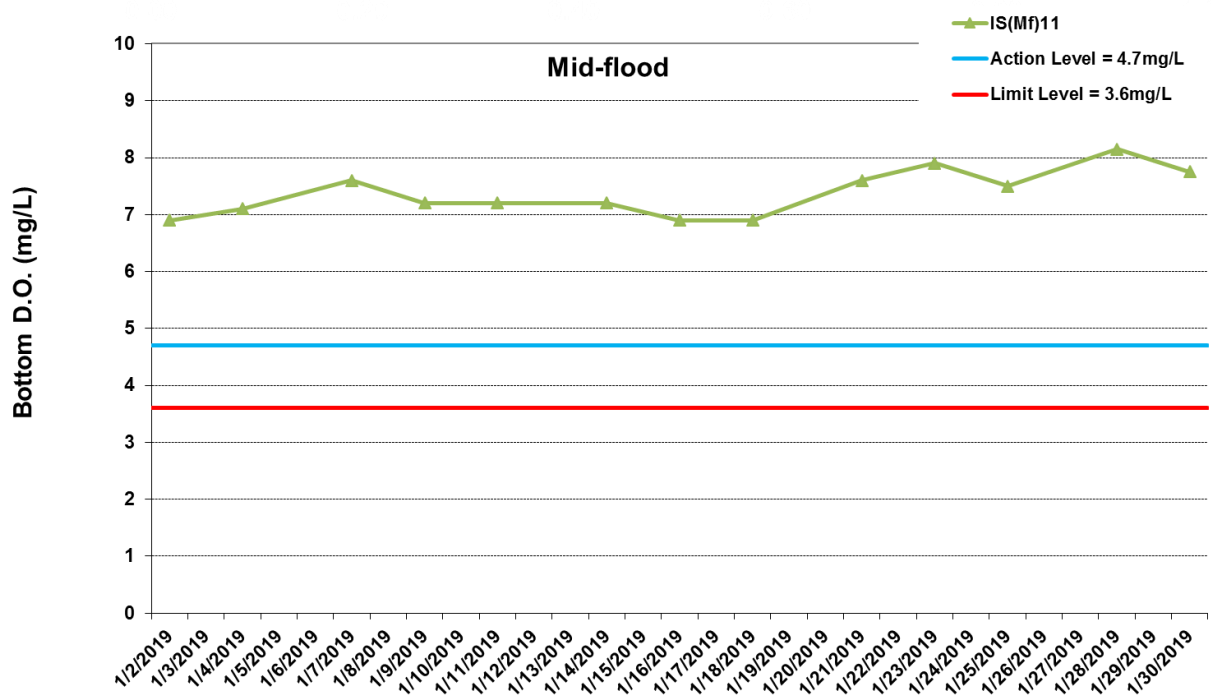
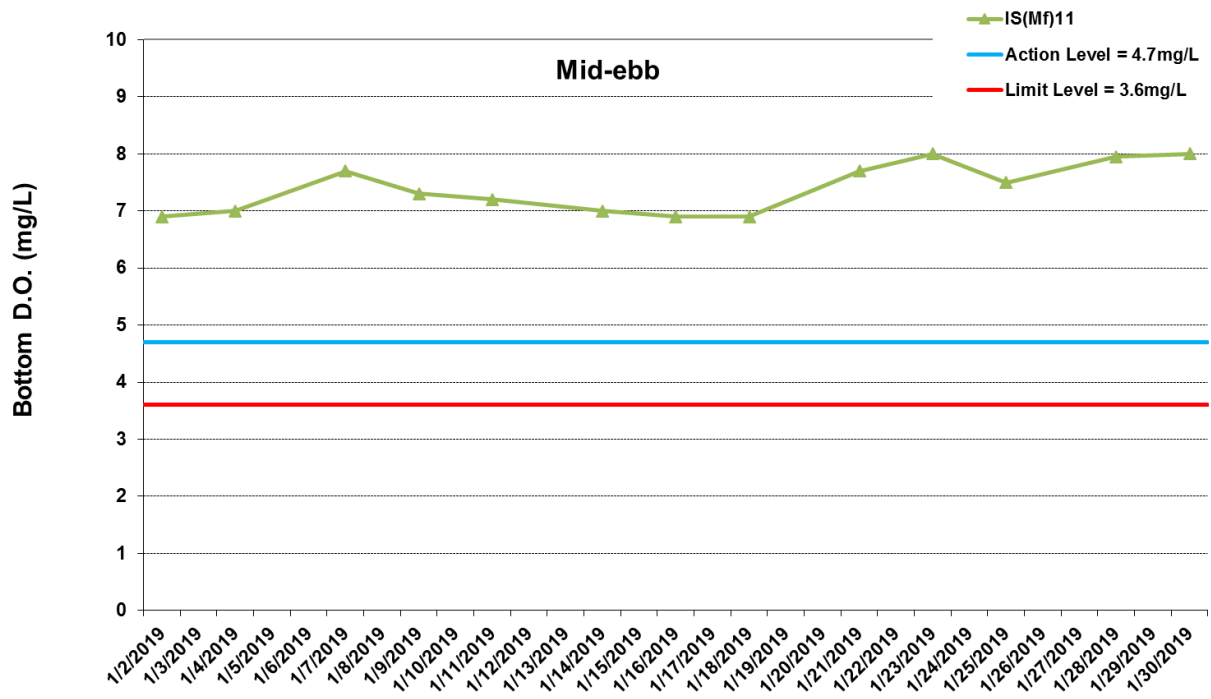


\* The AL/LL for WQM stations, IS(Mf)11, IS17 and SR7, are adopted from HZMB HKBCF project.

\*No data for Stations SR7 due to shallow water depth (< 6m).

**Figure J5 Impact Monitoring - Mean Level of Dissolved Oxygen (mg/L) in mid-depth waters between 1 January 2019 and 31 January 2019 at IS17. The weather conditions during the monitoring period varied mostly from sunny to cloudy. Major marine works included: Seawall Modification works at Southern Landfall (1/1/2019 - 31/1/2019).**

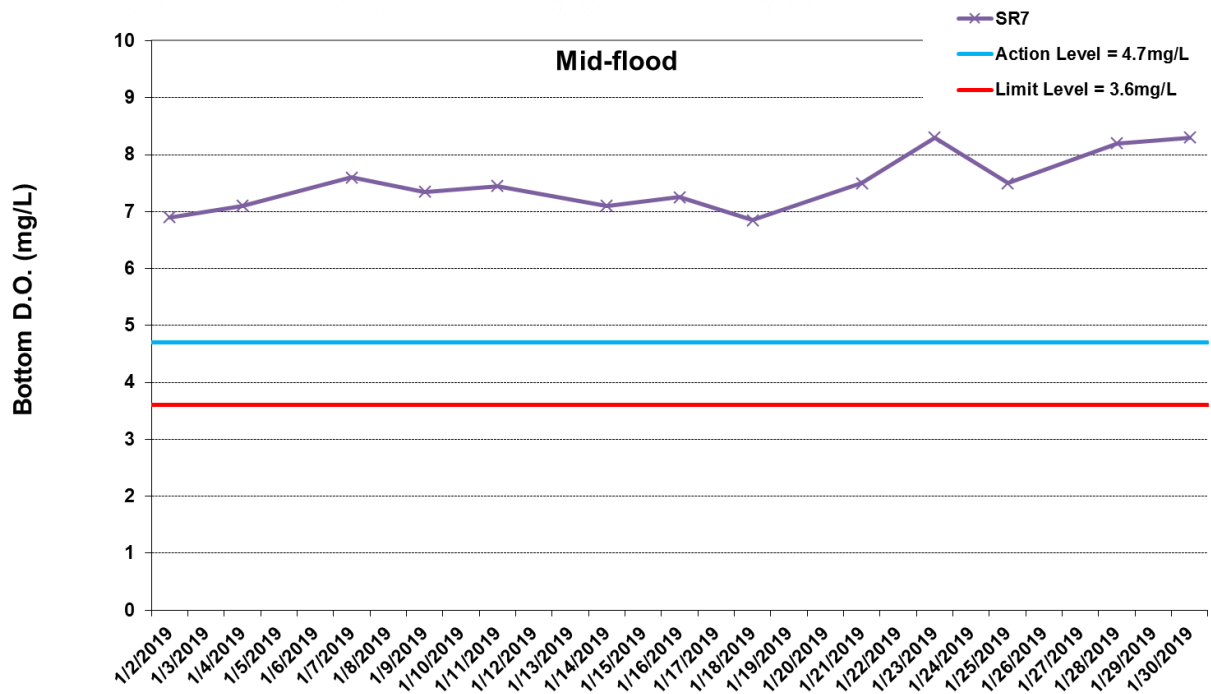
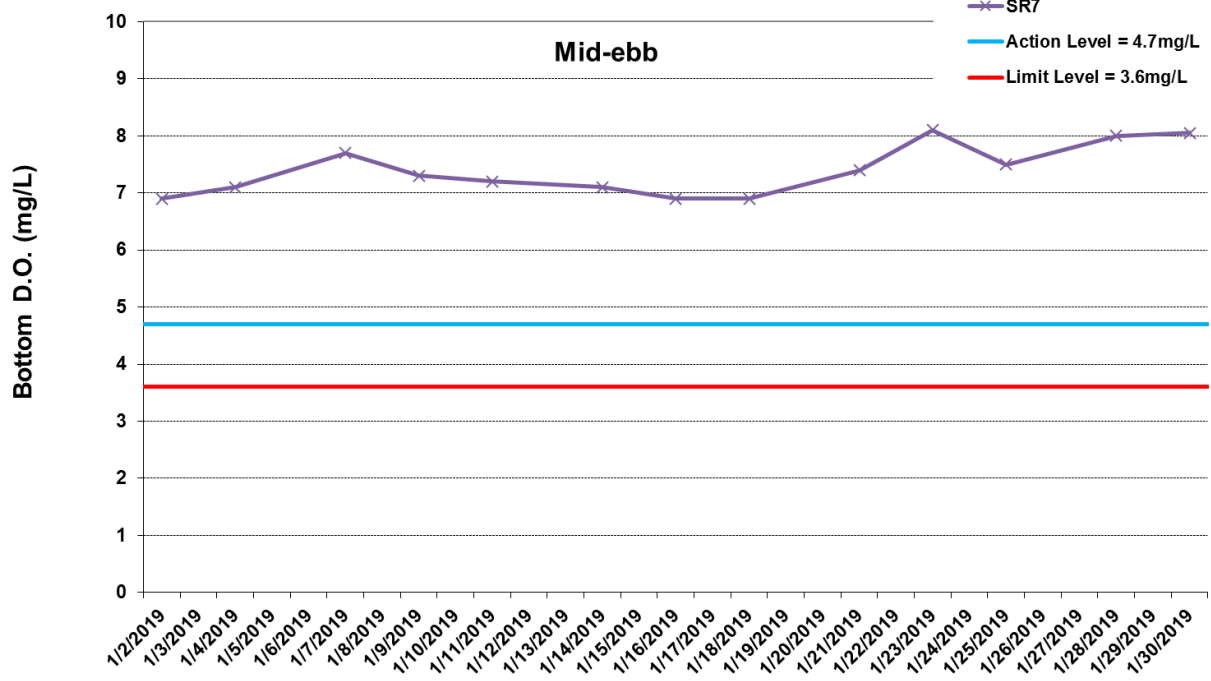




\* The AL/LL for WQM stations, IS(Mf)11, IS17 and SR7, are adopted from HZMB HKBCF project.

**Figure J6 Impact Monitoring - Mean Level of Dissolved Oxygen (mg/L) in bottom water between 1 January 2019 and 31 January 2019 at IS(Mf)11. The weather conditions during the monitoring period varied mostly from sunny to cloudy. Major marine works included: Seawall Modification works at Southern Landfall (1/1/2019 - 31/1/2019).**





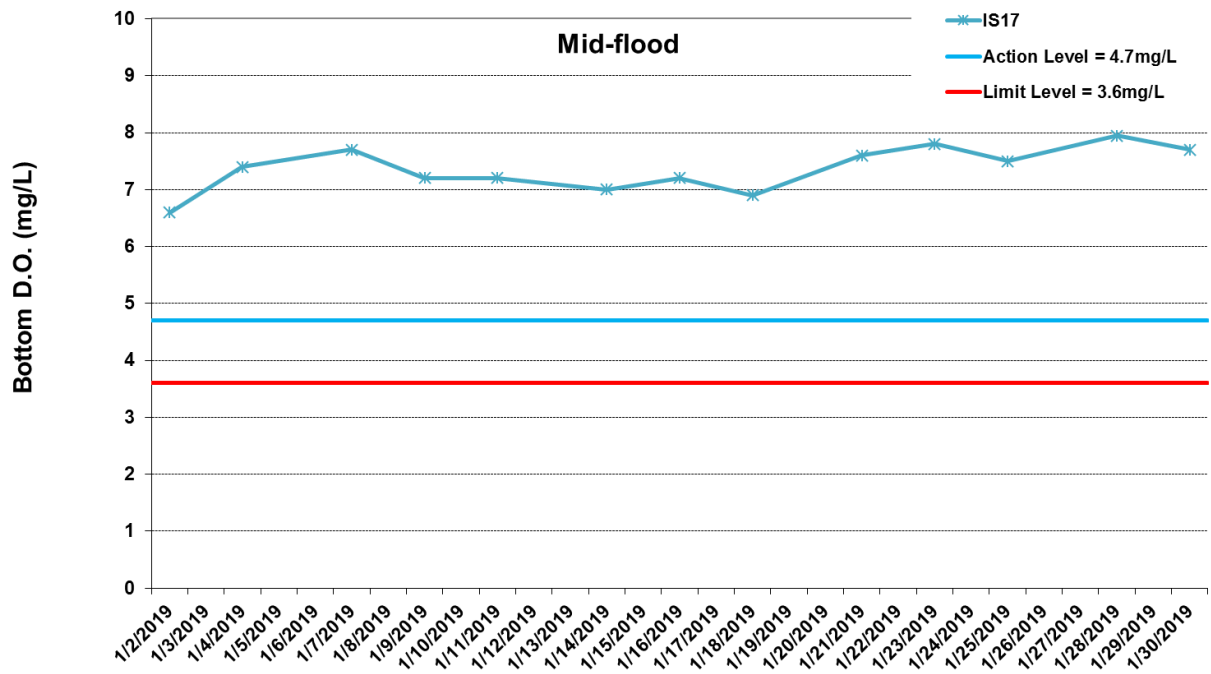
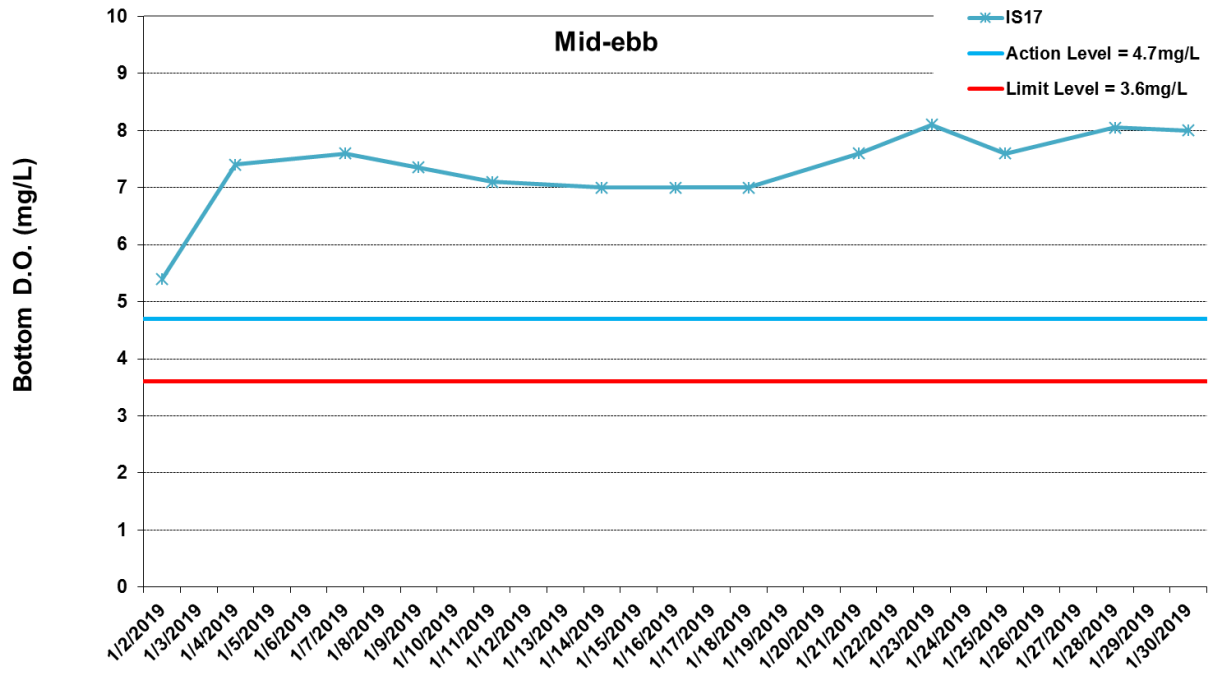
\* The AL/LL for WQM stations, IS(Mf)11, IS17 and SR7, are adopted from HZMB HKBCF project.

**Figure J7 Impact Monitoring - Mean Level of Dissolved Oxygen (mg/L) in bottom water between 1 January 2019 and 31 January 2019 at SR7. The weather conditions during the monitoring period varied mostly from sunny to cloudy. Major marine works included: Seawall Modification works at Southern Landfall (1/1/2019 - 31/1/2019).**



Ref: 0212330\_Impact-WQM\_January2019\_graphs\_Rev a.xls

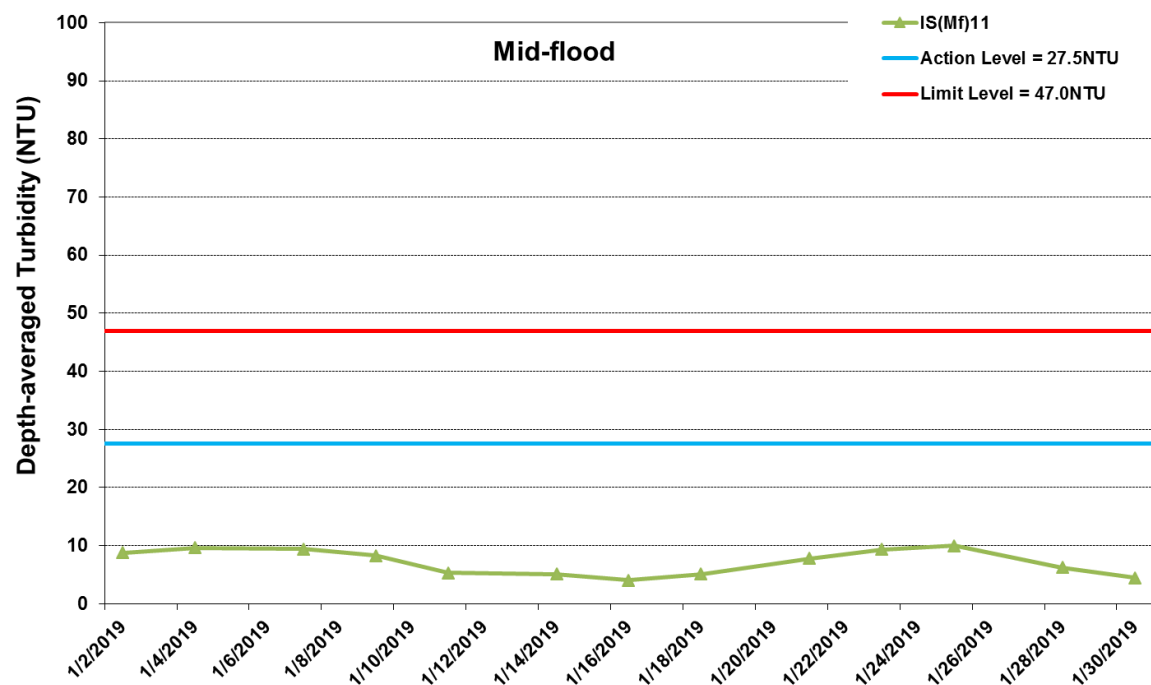
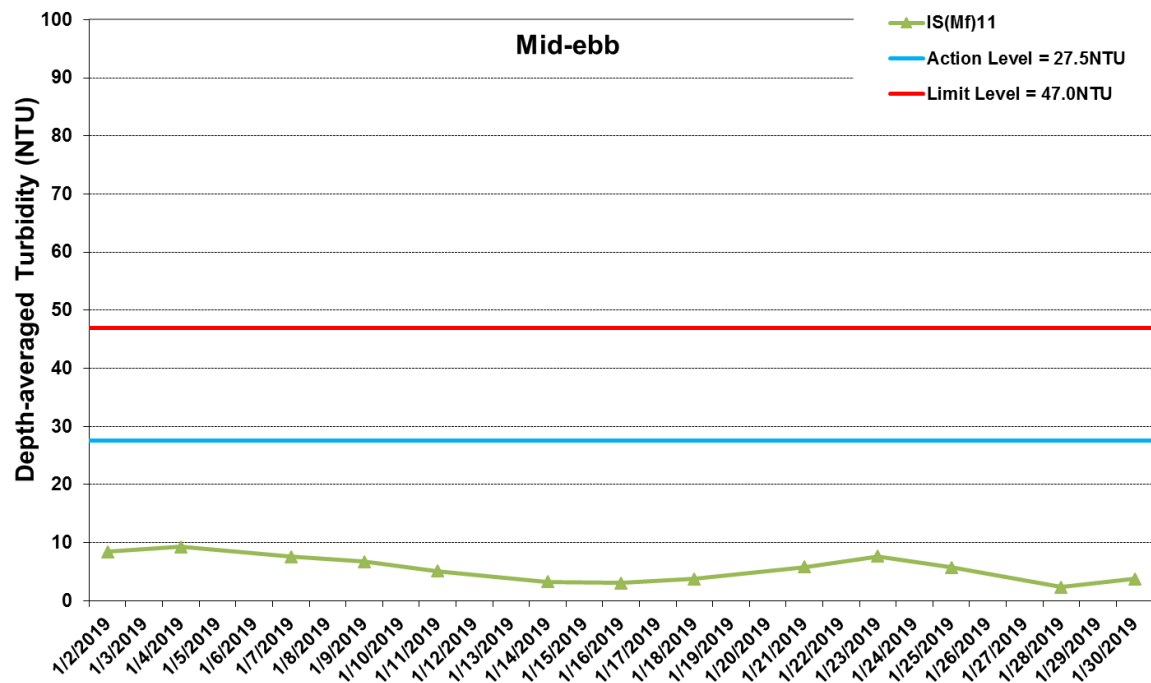




\* The AL/LL for WQM stations, IS(Mf)11, IS17 and SR7, are adopted from HZMB HKBCF project.

**Figure J8 Impact Monitoring - Mean Level of Dissolved Oxygen (mg/L) in bottom water between 1 January 2019 and 31 January 2019 at IS17. The weather conditions during the monitoring period varied mostly from sunny to cloudy. Major marine works included: Seawall Modification works at Southern Landfall (1/1/2019 - 31/1/2019).**

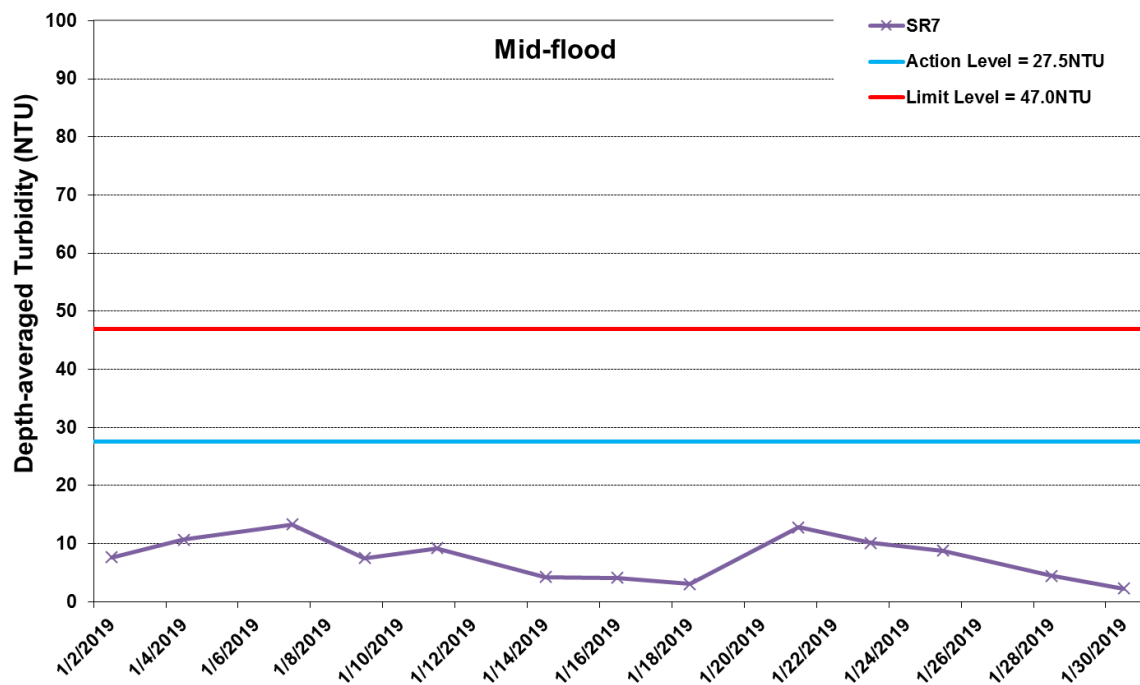
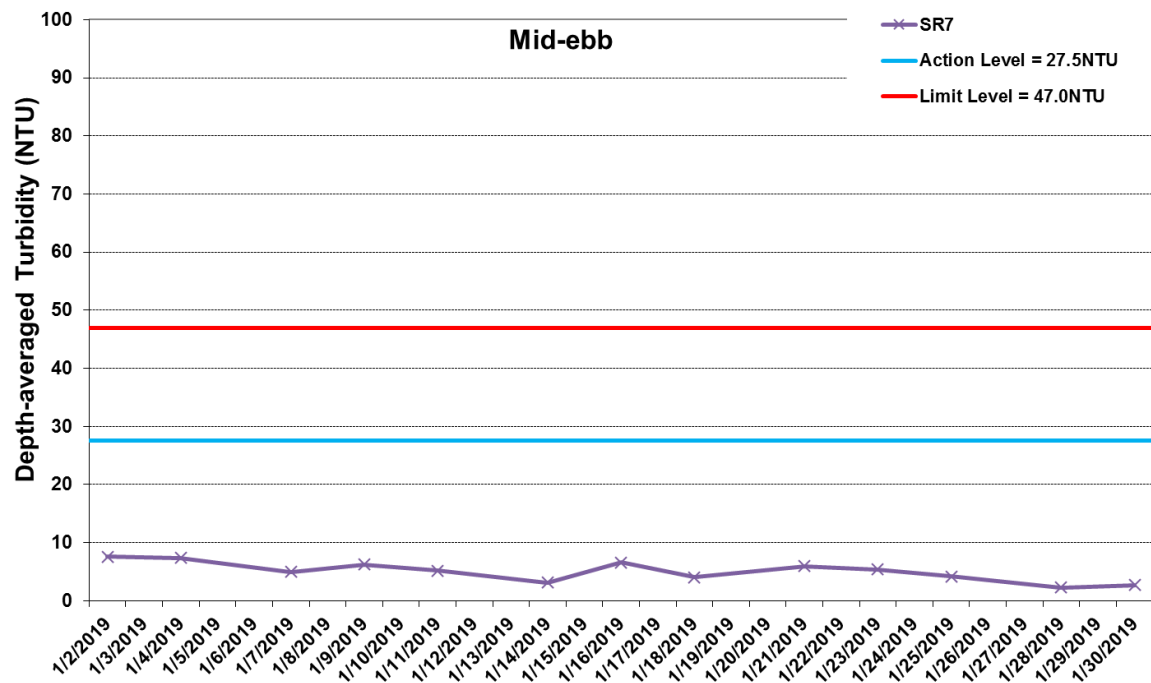




\* The AL/LL for WQM stations, IS(Mf)11, IS17 and SR7, are adopted from HZMB HKBCF project.

**Figure J9 Impact Monitoring - Mean Depth-averaged Level of Turbidity (NTU) between 1 January 2019 and 31 January 2019 at IS(Mf)11. The weather conditions during the monitoring period varied mostly from sunny to cloudy. Major marine works included: Seawall Modification works at Southern Landfall (1/1/2019 - 31/1/2019).**

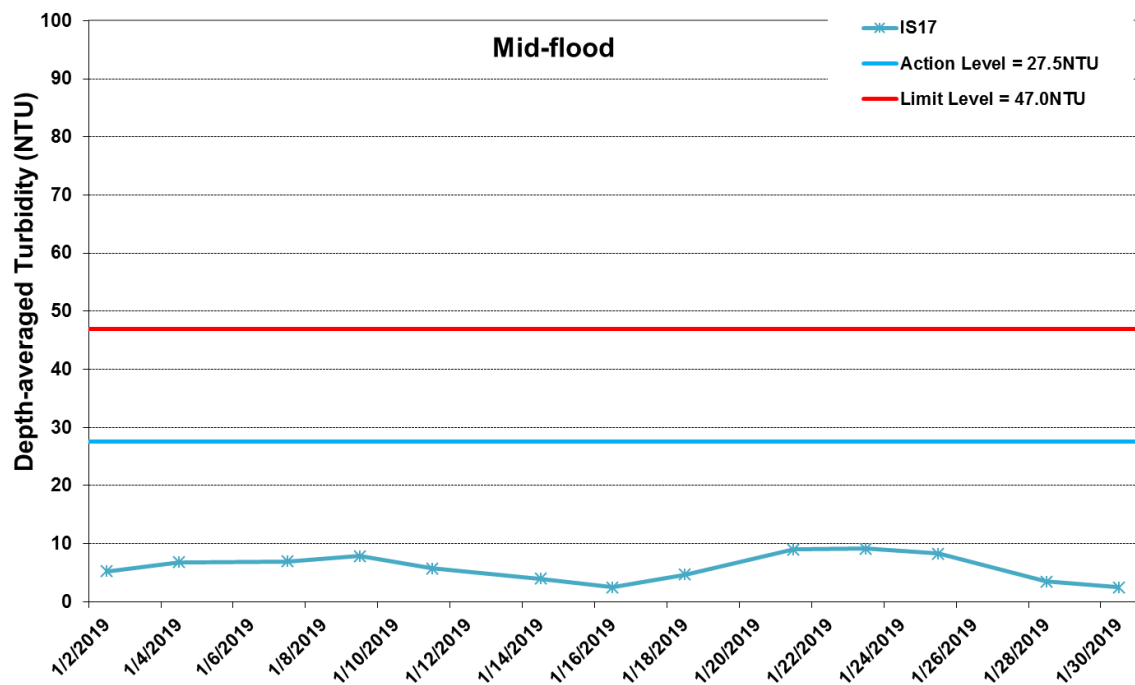
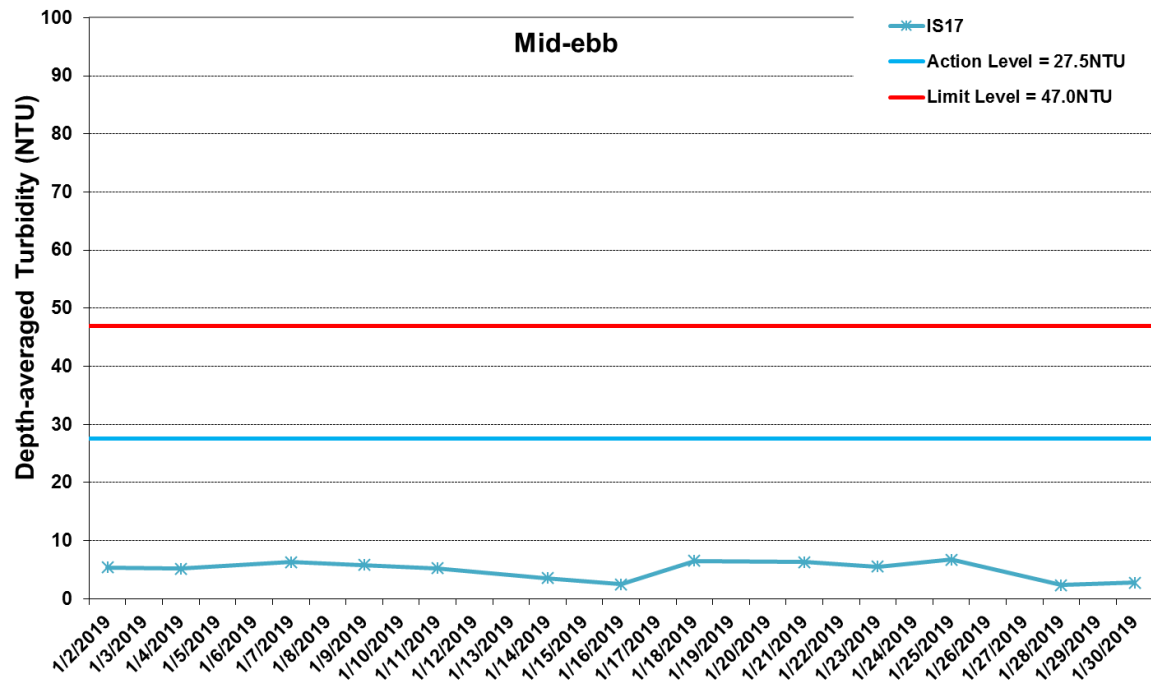




\* The AL/LL for WQM stations, IS(Mf)11, IS17 and SR7, are adopted from HZMB HKBCF project.

**Figure J10 Impact Monitoring - Mean Depth-averaged Level of Turbidity (NTU) between 1 January 2019 and 31 January 2019 at SR7. The weather conditions during the monitoring period varied mostly from sunny to cloudy. Major marine works included: Seawall Modification works at Southern Landfall (1/1/2019 - 31/1/2019).**

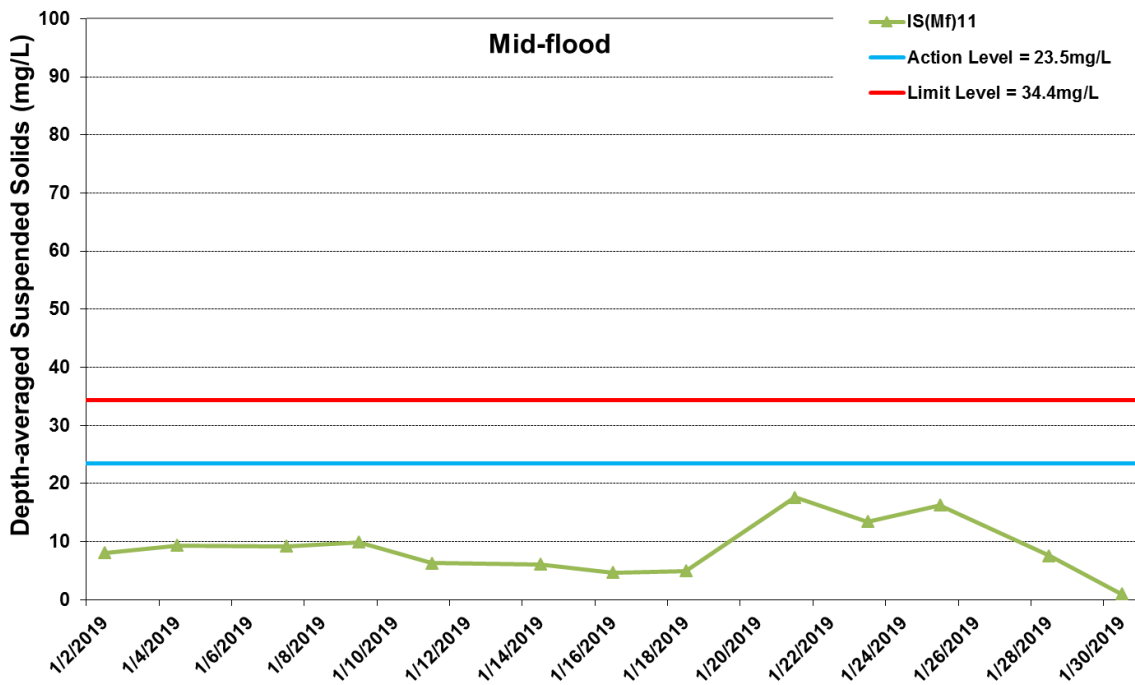
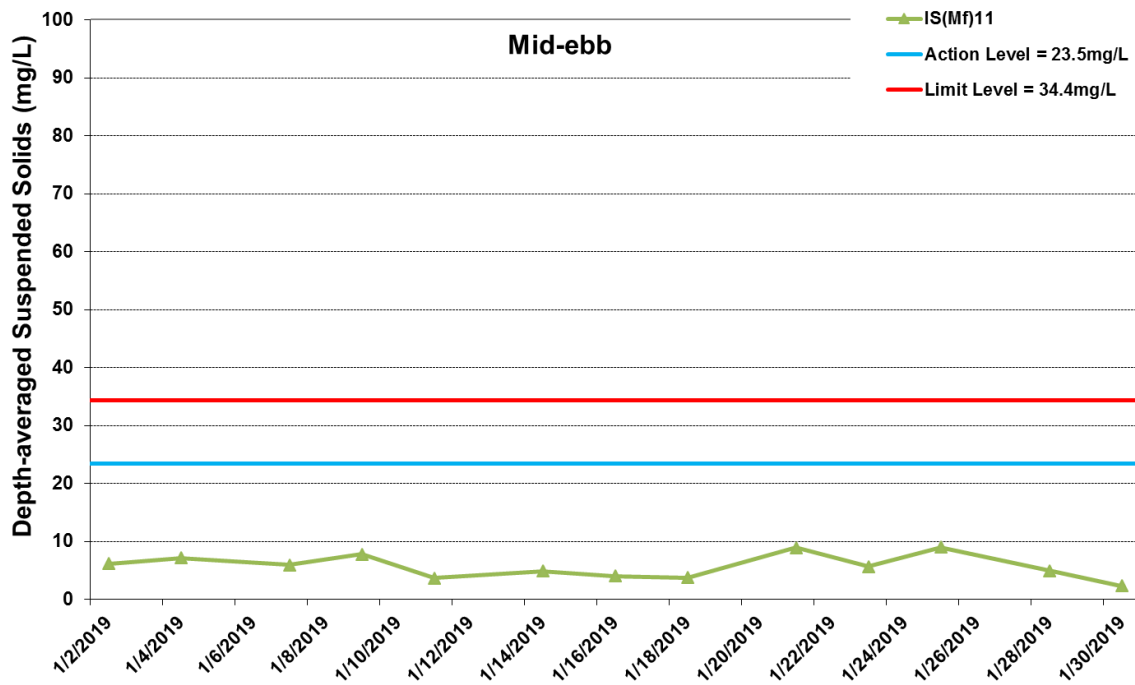




\* The AL/LL for WQM stations, IS(Mf)11, IS17 and SR7, are adopted from HZMB HKBCF project.

**Figure J11 Impact Monitoring - Mean Depth-averaged Level of Turbidity (NTU) between 1 January 2019 and 31 January 2019 at IS17. The weather conditions during the monitoring period varied mostly from sunny to cloudy. Major marine works included: Seawall Modification works at Southern Landfall (1/1/2019 - 31/1/2019).**



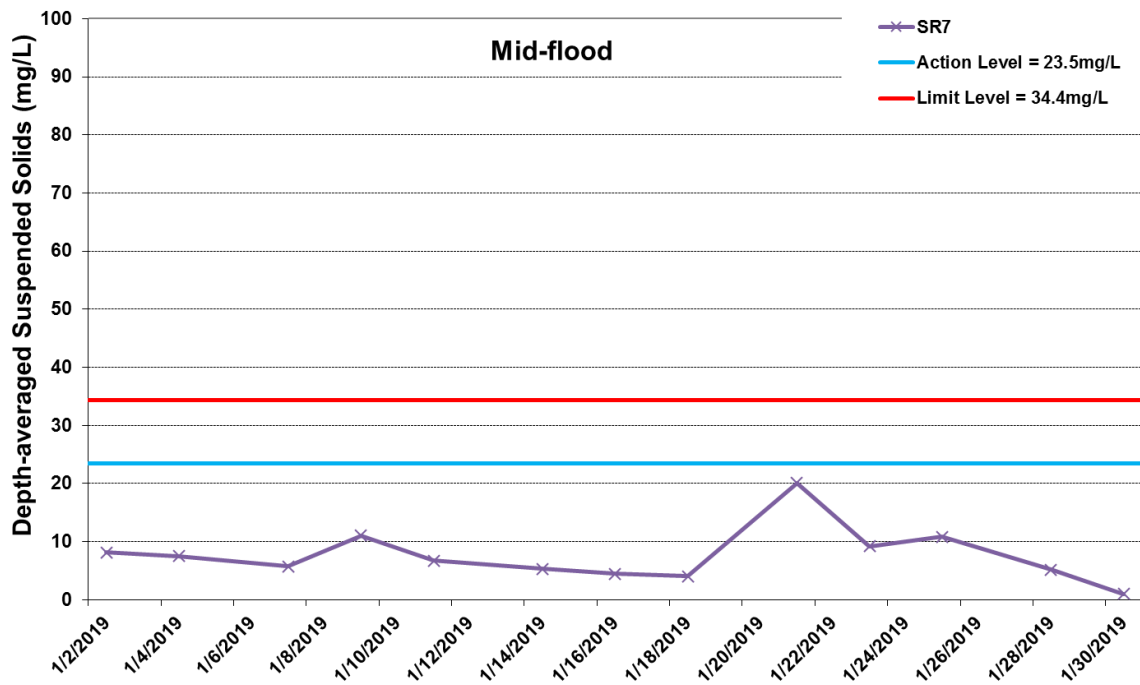
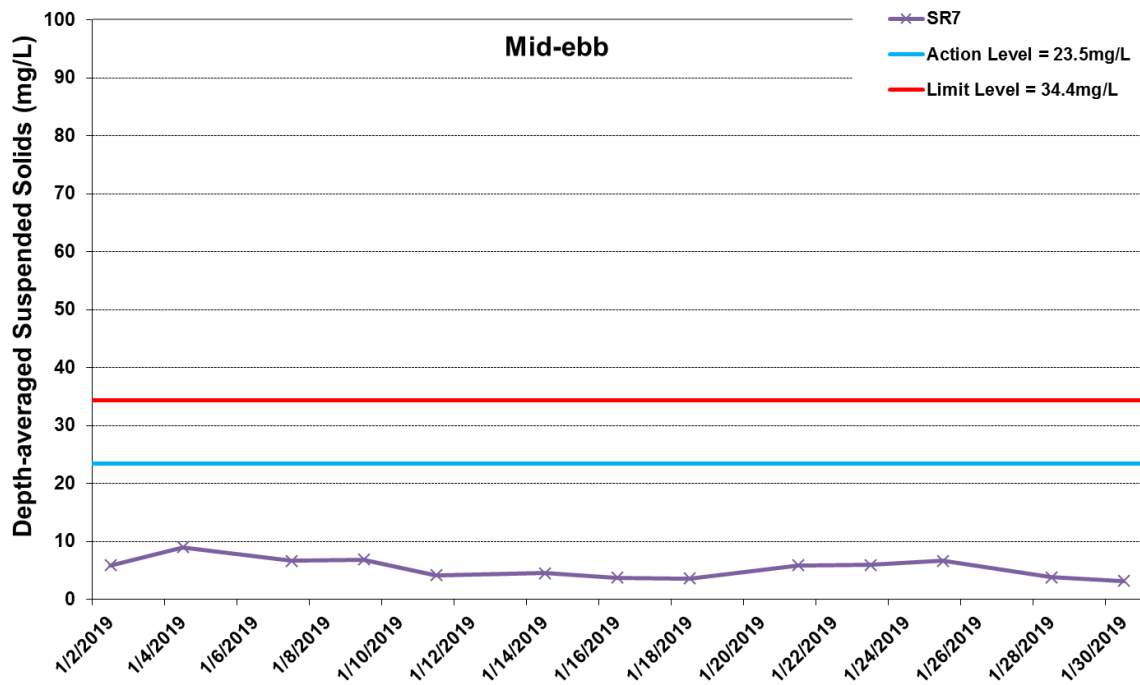


\* The AL/LL for WQM stations, IS(Mf)11, IS17 and SR7, are adopted from HZMB HKBCF project.

**Figure J12 Impact Monitoring - Mean Depth-averaged Level of Suspended Solids (mg/L) between 1 January 2019 and 31 January 2019 at IS(Mf)11. The weather conditions during the monitoring period varied mostly from sunny to cloudy. Major marine works included: Seawall Modification works at Southern Landfall (1/1/2019 - 31/1/2019).**



Ref: 0212330\_Impact-WQM\_January2019\_graphs\_Rev a.xls

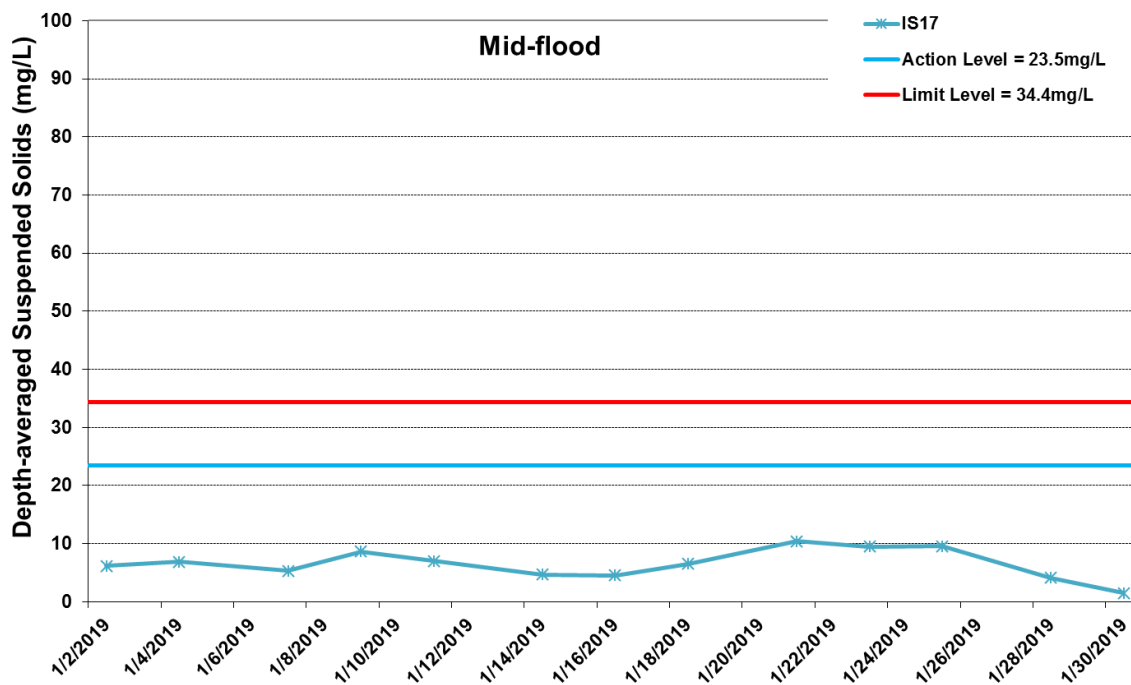
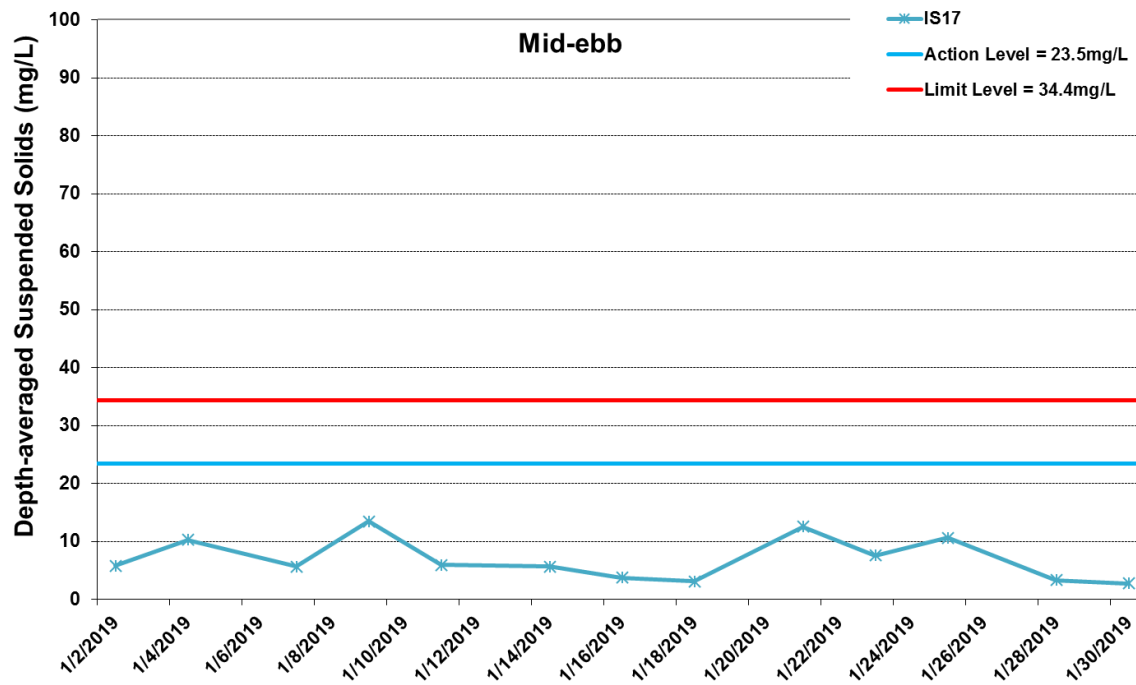


\* The AL/LL for WQM stations, IS(Mf)11, IS17 and SR7, are adopted from HZMB HKBCF project.

**Figure J13 Impact Monitoring - Mean Depth-averaged Level of Suspended Solids (mg/L) between 1 January 2019 and 31 January 2019 at SR7. The weather conditions during the monitoring period varied mostly from sunny to cloudy. Major marine works included: Seawall Modification works at Southern Landfall (1/1/2019 - 31/1/2019).**



Ref: 0212330\_Impact-WQM\_January2019\_graphs\_Rev a.xls



\* The AL/LL for WQM stations, IS(Mf)11, IS17 and SR7, are adopted from HZMB HKBCF project.

**Figure J14 Impact Monitoring - Mean Depth-averaged Level of Suspended Solids (mg/L) between 1 January 2019 and 31 January 2019 at IS17. The weather conditions during the monitoring period varied mostly from sunny to cloudy. Major marine works included: Seawall Modification works at Southern Landfall (1/1/2019 - 31/1/2019).**



Ref: 0212330\_Impact-WQM\_January2019\_graphs\_Rev a.xls

Project	Works	Date	Tide	Stat	Weather	Sea Condition	Time	Water Depth	Level	Lev_Cod	Replicate	Temp(°C)	pH	Salinity(ppt)	DO(mg/L)	Turbidity(NTU)	SS(mg/L)
TMCLKL	HY/2012/08	2019-01-02	Mid-Ebb	IS(Mf)11	Cloudy	Moderate	10:24	11.9	Surface	1	1	18.7	8.1	32.7	7	6.7	6.2
TMCLKL	HY/2012/08	2019-01-02	Mid-Ebb	IS(Mf)11	Cloudy	Moderate	10:24	11.9	Surface	1	2	18.7	8.1	32.7	7	6.7	6.1
TMCLKL	HY/2012/08	2019-01-02	Mid-Ebb	IS(Mf)11	Cloudy	Moderate	10:24	11.9	Middle	2	1	18.8	8.1	32.7	6.9	7	6.7
TMCLKL	HY/2012/08	2019-01-02	Mid-Ebb	IS(Mf)11	Cloudy	Moderate	10:24	11.9	Middle	2	2	18.8	8.1	32.7	6.9	7	5.6
TMCLKL	HY/2012/08	2019-01-02	Mid-Ebb	IS(Mf)11	Cloudy	Moderate	10:24	11.9	Bottom	3	1	18.9	8.1	32.8	6.9	11.5	5.9
TMCLKL	HY/2012/08	2019-01-02	Mid-Ebb	IS(Mf)11	Cloudy	Moderate	10:24	11.9	Bottom	3	2	18.9	8.1	32.8	6.9	11.6	6.5
TMCLKL	HY/2012/08	2019-01-02	Mid-Ebb	SR7	Cloudy	Moderate	10:17	5.3	Surface	1	1	19.3	8.1	33	6.9	7.6	5.6
TMCLKL	HY/2012/08	2019-01-02	Mid-Ebb	SR7	Cloudy	Moderate	10:17	5.3	Surface	1	2	19.3	8.1	33	6.9	7.6	5.1
TMCLKL	HY/2012/08	2019-01-02	Mid-Ebb	SR7	Cloudy	Moderate	10:17	5.3	Middle	2	1						
TMCLKL	HY/2012/08	2019-01-02	Mid-Ebb	SR7	Cloudy	Moderate	10:17	5.3	Middle	2	2						
TMCLKL	HY/2012/08	2019-01-02	Mid-Ebb	SR7	Cloudy	Moderate	10:17	5.3	Bottom	3	1	19.3	8.1	33	6.9	7.5	6.7
TMCLKL	HY/2012/08	2019-01-02	Mid-Ebb	SR7	Cloudy	Moderate	10:17	5.3	Bottom	3	2	19.3	8.1	33	6.9	7.6	6
TMCLKL	HY/2012/08	2019-01-02	Mid-Ebb	IS17	Cloudy	Moderate	10:37	11.2	Surface	1	1	18.9	8.2	33	6.1	1	4.6
TMCLKL	HY/2012/08	2019-01-02	Mid-Ebb	IS17	Cloudy	Moderate	10:37	11.2	Surface	1	2	18.9	8.2	33	6.1	1	4.1
TMCLKL	HY/2012/08	2019-01-02	Mid-Ebb	IS17	Cloudy	Moderate	10:37	11.2	Middle	2	1	18.9	8.1	33	5.9	5.1	5.7
TMCLKL	HY/2012/08	2019-01-02	Mid-Ebb	IS17	Cloudy	Moderate	10:37	11.2	Middle	2	2	18.9	8.1	33	5.9	5.1	6.6
TMCLKL	HY/2012/08	2019-01-02	Mid-Ebb	IS17	Cloudy	Moderate	10:37	11.2	Bottom	3	1	18.8	8.1	33	5.4	10.1	6.8
TMCLKL	HY/2012/08	2019-01-02	Mid-Ebb	IS17	Cloudy	Moderate	10:37	11.2	Bottom	3	2	18.8	8.1	33	5.4	10.1	7.1
TMCLKL	HY/2012/08	2019-01-02	Mid-Flood	IS(Mf)11	Cloudy	Moderate	15:34	11.4	Surface	1	1	19	8.1	32.8	6.9	8.5	8.6
TMCLKL	HY/2012/08	2019-01-02	Mid-Flood	IS(Mf)11	Cloudy	Moderate	15:34	11.4	Surface	1	2	19	8.1	32.8	6.9	8.4	9.2
TMCLKL	HY/2012/08	2019-01-02	Mid-Flood	IS(Mf)11	Cloudy	Moderate	15:34	11.4	Middle	2	1	19	8.1	32.8	6.9	8.7	10.1
TMCLKL	HY/2012/08	2019-01-02	Mid-Flood	IS(Mf)11	Cloudy	Moderate	15:34	11.4	Middle	2	2	19	8.1	32.8	6.9	8.7	9.5
TMCLKL	HY/2012/08	2019-01-02	Mid-Flood	IS(Mf)11	Cloudy	Moderate	15:34	11.4	Bottom	3	1	19	8.1	32.8	6.9	9.2	5.4
TMCLKL	HY/2012/08	2019-01-02	Mid-Flood	IS(Mf)11	Cloudy	Moderate	15:34	11.4	Bottom	3	2	19	8.1	32.8	6.9	9.2	5.7
TMCLKL	HY/2012/08	2019-01-02	Mid-Flood	SR7	Cloudy	Moderate	15:42	4.6	Surface	1	1	19.3	8.1	33	6.9	7.4	7.4
TMCLKL	HY/2012/08	2019-01-02	Mid-Flood	SR7	Cloudy	Moderate	15:42	4.6	Surface	1	2	19.3	8.1	33	6.9	7.4	7.7
TMCLKL	HY/2012/08	2019-01-02	Mid-Flood	SR7	Cloudy	Moderate	15:42	4.6	Middle	2	1						
TMCLKL	HY/2012/08	2019-01-02	Mid-Flood	SR7	Cloudy	Moderate	15:42	4.6	Middle	2	2						
TMCLKL	HY/2012/08	2019-01-02	Mid-Flood	SR7	Cloudy	Moderate	15:42	4.6	Bottom	3	1	19.4	8.1	33	6.9	7.9	8.3
TMCLKL	HY/2012/08	2019-01-02	Mid-Flood	SR7	Cloudy	Moderate	15:42	4.6	Bottom	3	2	19.4	8.1	33	6.9	7.9	9.2
TMCLKL	HY/2012/08	2019-01-02	Mid-Flood	IS17	Cloudy	Moderate	15:37	10.8	Surface	1	1	19.3	8.2	33.2	6.7	0.8	7.6
TMCLKL	HY/2012/08	2019-01-02	Mid-Flood	IS17	Cloudy	Moderate	15:37	10.8	Surface	1	2	19.3	8.2	33.2	6.7	0.8	8.2
TMCLKL	HY/2012/08	2019-01-02	Mid-Flood	IS17	Cloudy	Moderate	15:37	10.8	Middle	2	1	19.3	8.2	33.2	6.6	5.4	5.4
TMCLKL	HY/2012/08	2019-01-02	Mid-Flood	IS17	Cloudy	Moderate	15:37	10.8	Middle	2	2	19.3	8.2	33.2	6.6	5.4	5.8
TMCLKL	HY/2012/08	2019-01-02	Mid-Flood	IS17	Cloudy	Moderate	15:37	10.8	Bottom	3	1	19.3	8.2	33.2	6.6	9.6	5.1
TMCLKL	HY/2012/08	2019-01-02	Mid-Flood	IS17	Cloudy	Moderate	15:37	10.8	Bottom	3	2	19.3	8.2	33.2	6.6	9.6	4.8
TMCLKL	HY/2012/08	2019-01-04	Mid-Ebb	IS(Mf)11	Cloudy	M	11:51	11.3	Surface	1	1	18.6	8.1	33	7.1	7.1	6.1
TMCLKL	HY/2012/08	2019-01-04	Mid-Ebb	IS(Mf)11	Cloudy	M	11:51	11.3	Surface	1	2	18.6	8.1	33	7.1	7	5.7
TMCLKL	HY/2012/08	2019-01-04	Mid-Ebb	IS(Mf)11	Cloudy	M	11:51	11.3	Middle	2	1	18.6	8.1	33	7	8.9	6
TMCLKL	HY/2012/08	2019-01-04	Mid-Ebb	IS(Mf)11	Cloudy	M	11:51	11.3	Middle	2	2	18.6	8.1	33	7	7.8	5.9
TMCLKL	HY/2012/08	2019-01-04	Mid-Ebb	IS(Mf)11	Cloudy	M	11:51	11.3	Bottom	3	1	18.6	8.1	33	7	12.2	9.5
TMCLKL	HY/2012/08	2019-01-04	Mid-Ebb	IS(Mf)11	Cloudy	M	11:51	11.3	Bottom	3	2	18.6	8.1	33	7	12.7	9.8
TMCLKL	HY/2012/08	2019-01-04	Mid-Ebb	SR7	Cloudy	M	11:59	4	Surface	1	1	18.6	8.1	33	7.1	7.3	8.8
TMCLKL	HY/2012/08	2019-01-04	Mid-Ebb	SR7	Cloudy	M	11:59	4	Surface	1	2	18.6	8.1	33	7.1	7.3	8.6
TMCLKL	HY/2012/08	2019-01-04	Mid-Ebb	SR7	Cloudy	M	11:59	4	Middle	2	1						
TMCLKL	HY/2012/08	2019-01-04	Mid-Ebb	SR7	Cloudy	M	11:59	4	Middle	2	2						
TMCLKL	HY/2012/08	2019-01-04	Mid-Ebb	SR7	Cloudy	M	11:59	4	Bottom	3	1	18.6	8.1	33	7.1	7.5	9.7
TMCLKL	HY/2012/08	2019-01-04	Mid-Ebb	SR7	Cloudy	M	11:59	4	Bottom	3	2	18.6	8.1	33	7.1	7.4	8.8
TMCLKL	HY/2012/08	2019-01-04	Mid-Ebb	IS17	Cloudy	Moderate	11:45	10.2	Surface	1	1	18.3	8.1	33.3	7.4	5.1	9.4
TMCLKL	HY/2012/08	2019-01-04	Mid-Ebb	IS17	Cloudy	Moderate	11:45	10.2	Surface	1	2	18.3	8.1	33.3	7.4	4.8	10.5
TMCLKL	HY/2012/08	2019-01-04	Mid-Ebb	IS17	Cloudy	Moderate	11:45	10.2	Middle	2	1	18.1	8.1	33.3	7.5	5.2	9.3
TMCLKL	HY/2012/08	2019-01-04	Mid-Ebb	IS17	Cloudy	Moderate	11:45	10.2	Middle	2	2	18.1	8.1	33.3	7.5	5	9.3
TMCLKL	HY/2012/08	2019-01-04	Mid-Ebb	IS17	Cloudy	Moderate	11:45	10.2	Bottom	3	1	18.1	8.1	33.3	7.4	5.7	11.3
TMCLKL	HY/2012/08	2019-01-04	Mid-Ebb	IS17	Cloudy	Moderate	11:45	10.2	Bottom	3	2	18.1	8.1	33.3	7.4	5.3	11.8
TMCLKL	HY/2012/08	2019-01-04	Mid-Flood	IS(Mf)11	Cloudy	Moderate	07:24	11.2	Surface	1	1	18.4	8.1	32.9	7.1	9	10.7
TMCLKL	HY/2012/08	2019-01-04	Mid-Flood	IS(Mf)11	Cloudy	Moderate	07:24	11.2	Surface	1	2	18.4	8.1	32.9	7.1	9	10.9
TMCLKL	HY/2012/08	2019-01-04	Mid-Flood	IS(Mf)11	Cloudy	Moderate	07:24	11.2	Middle	2	1	18.4	8.1	32.9	7.1	9.9	9.5
TMCLKL	HY/2012/08	2019-01-04	Mid-Flood	IS(Mf)11	Cloudy	Moderate	07:24	11.2	Middle	2	2	18.4	8.1	32.9	7.1	9.8	9.9







Project	Works	Date	Tide	Stat	Weather	Sea Condition	Time	Water Depth	Level	Lev_Cod	Replicate	Temp(°C)	pH	Salinity(ppt)	DO(mg/L)	Turbidity(NTU)	SS(mg/L)
TMCLKL	HY/2012/08	2019-01-11	Mid-Flood	IS17	Misty	Moderate	11:30	9.8	Surface	1	1	18.7	8.2	30.1	7.3	6.5	6.1
TMCLKL	HY/2012/08	2019-01-11	Mid-Flood	IS17	Misty	Moderate	11:30	9.8	Surface	1	2	18.7	8.2	30.1	7.3	6.6	7.2
TMCLKL	HY/2012/08	2019-01-11	Mid-Flood	IS17	Misty	Moderate	11:30	9.8	Middle	2	1	18.6	8.2	30.1	7.3	4.4	6.6
TMCLKL	HY/2012/08	2019-01-11	Mid-Flood	IS17	Misty	Moderate	11:30	9.8	Middle	2	2	18.6	8.2	30.2	7.3	4.3	7.4
TMCLKL	HY/2012/08	2019-01-11	Mid-Flood	IS17	Misty	Moderate	11:30	9.8	Bottom	3	1	18.6	8.2	30.3	7.2	6.4	7.8
TMCLKL	HY/2012/08	2019-01-11	Mid-Flood	IS17	Misty	Moderate	11:30	9.8	Bottom	3	2	18.6	8.2	30.3	7.2	6.2	6.9
TMCLKL	HY/2012/08	2019-01-14	Mid-Ebb	IS(Mf)11	Cloudy	Moderate	05:44	11.3	Surface	1	1	19.1	8.3	28.6	7.3	3.7	5.7
TMCLKL	HY/2012/08	2019-01-14	Mid-Ebb	IS(Mf)11	Cloudy	Moderate	05:44	11.3	Surface	1	2	19.1	8.3	28.6	7.3	3.6	4.8
TMCLKL	HY/2012/08	2019-01-14	Mid-Ebb	IS(Mf)11	Cloudy	Moderate	05:44	11.3	Middle	2	1	19.2	8.2	29.3	7.1	3.1	4.7
TMCLKL	HY/2012/08	2019-01-14	Mid-Ebb	IS(Mf)11	Cloudy	Moderate	05:44	11.3	Middle	2	2	19.2	8.2	29.3	7.1	3.1	4.6
TMCLKL	HY/2012/08	2019-01-14	Mid-Ebb	IS(Mf)11	Cloudy	Moderate	05:44	11.3	Bottom	3	1	19.1	8.2	29.8	7	3	5.6
TMCLKL	HY/2012/08	2019-01-14	Mid-Ebb	IS(Mf)11	Cloudy	Moderate	05:44	11.3	Bottom	3	2	19.1	8.2	29.8	7	3	4
TMCLKL	HY/2012/08	2019-01-14	Mid-Ebb	SR7	Cloudy	Moderate	04:43	4.3	Surface	1	1	19.1	8.2	29.2	7.1	3.1	4.9
TMCLKL	HY/2012/08	2019-01-14	Mid-Ebb	SR7	Cloudy	Moderate	04:43	4.3	Surface	1	2	19.1	8.2	29.2	7.1	3	4.9
TMCLKL	HY/2012/08	2019-01-14	Mid-Ebb	SR7	Cloudy	Moderate	04:43	4.3	Middle	2	1						
TMCLKL	HY/2012/08	2019-01-14	Mid-Ebb	SR7	Cloudy	Moderate	04:43	4.3	Middle	2	2						
TMCLKL	HY/2012/08	2019-01-14	Mid-Ebb	SR7	Cloudy	Moderate	04:43	4.3	Bottom	3	1	19.1	8.2	29.5	7.1	3.1	4.1
TMCLKL	HY/2012/08	2019-01-14	Mid-Ebb	SR7	Cloudy	Moderate	04:43	4.3	Bottom	3	2	19.1	8.2	29.5	7.1	3.2	4.2
TMCLKL	HY/2012/08	2019-01-14	Mid-Ebb	IS17	Cloudy	Moderate	05:51	10.7	Surface	1	1	19.1	8.2	29.1	7.1	3.5	4.6
TMCLKL	HY/2012/08	2019-01-14	Mid-Ebb	IS17	Cloudy	Moderate	05:51	10.7	Surface	1	2	19.1	8.2	29.1	7.1	3.5	4.2
TMCLKL	HY/2012/08	2019-01-14	Mid-Ebb	IS17	Cloudy	Moderate	05:51	10.7	Middle	2	1	19.1	8.2	29.5	7	3.4	5.7
TMCLKL	HY/2012/08	2019-01-14	Mid-Ebb	IS17	Cloudy	Moderate	05:51	10.7	Middle	2	2	19.1	8.2	29.4	7	3.4	7.1
TMCLKL	HY/2012/08	2019-01-14	Mid-Ebb	IS17	Cloudy	Moderate	05:51	10.7	Bottom	3	1	19.1	8.2	29.6	7	3.8	5.9
TMCLKL	HY/2012/08	2019-01-14	Mid-Ebb	IS17	Cloudy	Moderate	05:51	10.7	Bottom	3	2	19.1	8.2	29.6	7	3.8	6.4
TMCLKL	HY/2012/08	2019-01-14	Mid-Flood	IS(Mf)11	Cloudy	Moderate	12:03	11.1	Surface	1	1	19.2	8.3	29.1	7.2	4.6	5
TMCLKL	HY/2012/08	2019-01-14	Mid-Flood	IS(Mf)11	Cloudy	Moderate	12:03	11.1	Surface	1	2	19.2	8.3	29.1	7.2	4.2	6
TMCLKL	HY/2012/08	2019-01-14	Mid-Flood	IS(Mf)11	Cloudy	Moderate	12:03	11.1	Middle	2	1	19.2	8.3	29.3	7.2	5.6	6.8
TMCLKL	HY/2012/08	2019-01-14	Mid-Flood	IS(Mf)11	Cloudy	Moderate	12:03	11.1	Middle	2	2	19.2	8.3	29.2	7.2	5.8	6.4
TMCLKL	HY/2012/08	2019-01-14	Mid-Flood	IS(Mf)11	Cloudy	Moderate	12:03	11.1	Bottom	3	1	19.2	8.3	29.3	7.2	5.3	6.6
TMCLKL	HY/2012/08	2019-01-14	Mid-Flood	IS(Mf)11	Cloudy	Moderate	12:03	11.1	Bottom	3	2	19.2	8.3	29.3	7.2	5.2	5.7
TMCLKL	HY/2012/08	2019-01-14	Mid-Flood	SR7	Cloudy	Calm	11:56	4.7	Surface	1	1	19.2	8.2	29.2	7.1	4.2	6.1
TMCLKL	HY/2012/08	2019-01-14	Mid-Flood	SR7	Cloudy	Calm	11:56	4.7	Surface	1	2	19.2	8.2	29.2	7.1	4.3	4.8
TMCLKL	HY/2012/08	2019-01-14	Mid-Flood	SR7	Cloudy	Calm	11:56	4.7	Middle	2	1						
TMCLKL	HY/2012/08	2019-01-14	Mid-Flood	SR7	Cloudy	Calm	11:56	4.7	Middle	2	2						
TMCLKL	HY/2012/08	2019-01-14	Mid-Flood	SR7	Cloudy	Calm	11:56	4.7	Bottom	3	1	19.2	8.2	29.3	7.1	4.2	5.8
TMCLKL	HY/2012/08	2019-01-14	Mid-Flood	SR7	Cloudy	Calm	11:56	4.7	Bottom	3	2	19.2	8.2	29.3	7.1	4.2	4.5
TMCLKL	HY/2012/08	2019-01-14	Mid-Flood	IS17	Cloudy	Moderate	11:49	10.6	Surface	1	1	19.2	8.2	29	7.1	2.8	4.7
TMCLKL	HY/2012/08	2019-01-14	Mid-Flood	IS17	Cloudy	Moderate	11:49	10.6	Surface	1	2	19.2	8.2	29	7.1	2.8	4.5
TMCLKL	HY/2012/08	2019-01-14	Mid-Flood	IS17	Cloudy	Moderate	11:49	10.6	Middle	2	1	19.1	8.2	29.6	6.9	3.9	4.1
TMCLKL	HY/2012/08	2019-01-14	Mid-Flood	IS17	Cloudy	Moderate	11:49	10.6	Middle	2	2	19.1	8.2	29.5	6.9	3.7	3.7
TMCLKL	HY/2012/08	2019-01-14	Mid-Flood	IS17	Cloudy	Moderate	11:49	10.6	Bottom	3	1	19.1	8.2	29.7	7	5.6	6.1
TMCLKL	HY/2012/08	2019-01-14	Mid-Flood	IS17	Cloudy	Moderate	11:49	10.6	Bottom	3	2	19.1	8.2	29.7	7	4.9	5
TMCLKL	HY/2012/08	2019-01-16	Mid-Ebb	IS(Mf)11	Cloudy	Moderate	07:11	11.5	Surface	1	1	19	8.2	28.2	7.1	3.1	3.8
TMCLKL	HY/2012/08	2019-01-16	Mid-Ebb	IS(Mf)11	Cloudy	Moderate	07:11	11.5	Surface	1	2	19	8.2	28.2	7.1	3.1	3.4
TMCLKL	HY/2012/08	2019-01-16	Mid-Ebb	IS(Mf)11	Cloudy	Moderate	07:11	11.5	Middle	2	1	19.2	8.2	29.4	6.9	3.1	3.7
TMCLKL	HY/2012/08	2019-01-16	Mid-Ebb	IS(Mf)11	Cloudy	Moderate	07:11	11.5	Middle	2	2	19.2	8.2	29.3	6.9	3.3	4.5
TMCLKL	HY/2012/08	2019-01-16	Mid-Ebb	IS(Mf)11	Cloudy	Moderate	07:11	11.5	Bottom	3	1	19.2	8.2	29.7	6.9	2.8	4.3
TMCLKL	HY/2012/08	2019-01-16	Mid-Ebb	IS(Mf)11	Cloudy	Moderate	07:11	11.5	Bottom	3	2	19.2	8.2	29.7	6.9	2.8	4.4
TMCLKL	HY/2012/08	2019-01-16	Mid-Ebb	SR7	Cloudy	Moderate	07:02	4.5	Surface	1	1	19.1	8.2	29.2	6.9	7.5	3.7
TMCLKL	HY/2012/08	2019-01-16	Mid-Ebb	SR7	Cloudy	Moderate	07:02	4.5	Surface	1	2	19.1	8.2	29.1	6.9	7.3	3.7
TMCLKL	HY/2012/08	2019-01-16	Mid-Ebb	SR7	Cloudy	Moderate	07:02	4.5	Middle	2	1						
TMCLKL	HY/2012/08	2019-01-16	Mid-Ebb	SR7	Cloudy	Moderate	07:02	4.5	Middle	2	2						
TMCLKL	HY/2012/08	2019-01-16	Mid-Ebb	SR7	Cloudy	Moderate	07:02	4.5	Bottom	3	1	19.1	8.2	29.4	6.9	5.9	3.7
TMCLKL	HY/2012/08	2019-01-16	Mid-Ebb	SR7	Cloudy	Moderate	07:02	4.5	Bottom	3	2	19.1	8.2	29.4	6.9	5.7	4
TMCLKL	HY/2012/08	2019-01-16	Mid-Ebb	IS17	Cloudy	Moderate	08:09	11.3	Surface	1	1	19.1	8.2	29.2	7	2.7	3.2
TMCLKL	HY/2012/08	2019-01-16	Mid-Ebb	IS17	Cloudy	Moderate	08:09	11.3	Surface	1	2	19.1	8.2	29.1	7	2.8	3.5
TMCLKL	HY/2012/08	2019-01-16	Mid-Ebb	IS17	Cloudy	Moderate	08:09	11.3	Middle	2	1	19.1	8.2	29.8	6.9	2.2	3.8
TMCLKL	HY/2012/08	2019-01-16	Mid-Ebb	IS17	Cloudy	Moderate	08:09	11.3	Middle	2	2	19.1	8.2	29.6	7	2.2	3.5

Project	Works	Date	Tide	Stat	Weather	Sea Condition	Time	Water Depth	Level	Lev_Cod	Replicate	Temp(°C)	pH	Salinity(ppt)	DO(mg/L)	Turbidity(NTU)	SS(mg/L)
TMCLKL	HY/2012/08	2019-01-16	Mid-Ebb	IS17	Cloudy	Moderate	08:09	11.3	Bottom	3	1	19.1	8.2	30.2	7	2.4	4.4
TMCLKL	HY/2012/08	2019-01-16	Mid-Ebb	IS17	Cloudy	Moderate	08:09	11.3	Bottom	3	2	19.1	8.2	30.2	7	2.4	4.2
TMCLKL	HY/2012/08	2019-01-16	Mid-Flood	IS(Mf)11	Cloudy	Moderate	13:23	11.3	Surface	1	1	19.1	8.2	29.4	6.9	3.6	3.4
TMCLKL	HY/2012/08	2019-01-16	Mid-Flood	IS(Mf)11	Cloudy	Moderate	13:23	11.3	Surface	1	2	19.1	8.2	29.3	6.9	3.5	3.9
TMCLKL	HY/2012/08	2019-01-16	Mid-Flood	IS(Mf)11	Cloudy	Moderate	13:23	11.3	Middle	2	1	19.2	8.2	29.8	6.8	3.8	5.2
TMCLKL	HY/2012/08	2019-01-16	Mid-Flood	IS(Mf)11	Cloudy	Moderate	13:23	11.3	Middle	2	2	19.2	8.2	29.8	6.8	3.8	4.9
TMCLKL	HY/2012/08	2019-01-16	Mid-Flood	IS(Mf)11	Cloudy	Moderate	13:23	11.3	Bottom	3	1	19.2	8.2	30.3	6.9	4.7	5.5
TMCLKL	HY/2012/08	2019-01-16	Mid-Flood	IS(Mf)11	Cloudy	Moderate	13:23	11.3	Bottom	3	2	19.2	8.2	30.3	6.9	4.7	5.3
TMCLKL	HY/2012/08	2019-01-16	Mid-Flood	SR7	Cloudy	Moderate	14:19	4.6	Surface	1	1	19.1	8.2	29.6	7.1	3.3	4
TMCLKL	HY/2012/08	2019-01-16	Mid-Flood	SR7	Cloudy	Moderate	14:19	4.6	Surface	1	2	19.1	8.2	29.5	7.1	3	4.9
TMCLKL	HY/2012/08	2019-01-16	Mid-Flood	SR7	Cloudy	Moderate	14:19	4.6	Middle	2	1						
TMCLKL	HY/2012/08	2019-01-16	Mid-Flood	SR7	Cloudy	Moderate	14:19	4.6	Middle	2	2						
TMCLKL	HY/2012/08	2019-01-16	Mid-Flood	SR7	Cloudy	Moderate	14:19	4.6	Bottom	3	1	19.1	8.2	29.7	7.3	5	4.3
TMCLKL	HY/2012/08	2019-01-16	Mid-Flood	SR7	Cloudy	Moderate	14:19	4.6	Bottom	3	2	19.1	8.2	29.7	7.2	5.1	4.6
TMCLKL	HY/2012/08	2019-01-16	Mid-Flood	IS17	Cloudy	Moderate	13:17	11.5	Surface	1	1	19.1	8.2	29	7.2	2.8	5
TMCLKL	HY/2012/08	2019-01-16	Mid-Flood	IS17	Cloudy	Moderate	13:17	11.5	Surface	1	2	19.1	8.2	29	7.2	2.9	4.6
TMCLKL	HY/2012/08	2019-01-16	Mid-Flood	IS17	Cloudy	Moderate	13:17	11.5	Middle	2	1	19.1	8.2	29.1	7.1	2.3	5.6
TMCLKL	HY/2012/08	2019-01-16	Mid-Flood	IS17	Cloudy	Moderate	13:17	11.5	Middle	2	2	19.1	8.2	29.1	7.1	2.3	4.9
TMCLKL	HY/2012/08	2019-01-16	Mid-Flood	IS17	Cloudy	Moderate	13:17	11.5	Bottom	3	1	19	8.2	29.3	7.2	2.2	3.9
TMCLKL	HY/2012/08	2019-01-16	Mid-Flood	IS17	Cloudy	Moderate	13:17	11.5	Bottom	3	2	19	8.2	29.3	7.2	2.2	3.1
TMCLKL	HY/2012/08	2019-01-18	Mid-Ebb	IS(Mf)11	Cloudy	Moderate	10:45	11.2	Surface	1	1	18.8	8.2	30.5	7	3.4	3.8
TMCLKL	HY/2012/08	2019-01-18	Mid-Ebb	IS(Mf)11	Cloudy	Moderate	10:45	11.2	Surface	1	2	18.8	8.1	30.5	7	3.6	3.1
TMCLKL	HY/2012/08	2019-01-18	Mid-Ebb	IS(Mf)11	Cloudy	Moderate	10:45	11.2	Middle	2	1	18.7	8.2	30.6	6.9	3.5	3.7
TMCLKL	HY/2012/08	2019-01-18	Mid-Ebb	IS(Mf)11	Cloudy	Moderate	10:45	11.2	Middle	2	2	18.7	8.1	30.6	6.9	3.7	4
TMCLKL	HY/2012/08	2019-01-18	Mid-Ebb	IS(Mf)11	Cloudy	Moderate	10:45	11.2	Bottom	3	1	18.8	8.2	30.6	6.9	4.1	4.1
TMCLKL	HY/2012/08	2019-01-18	Mid-Ebb	IS(Mf)11	Cloudy	Moderate	10:45	11.2	Bottom	3	2	18.8	8.1	30.6	6.9	4.3	3.8
TMCLKL	HY/2012/08	2019-01-18	Mid-Ebb	SR7	Cloudy	Moderate	09:50	4.3	Surface	1	1	18.8	8.2	30.7	6.8	4.2	2.9
TMCLKL	HY/2012/08	2019-01-18	Mid-Ebb	SR7	Cloudy	Moderate	09:50	4.3	Surface	1	2	18.8	8.1	30.7	6.8	4.2	2.9
TMCLKL	HY/2012/08	2019-01-18	Mid-Ebb	SR7	Cloudy	Moderate	09:50	4.3	Middle	2	1						
TMCLKL	HY/2012/08	2019-01-18	Mid-Ebb	SR7	Cloudy	Moderate	09:50	4.3	Middle	2	2						
TMCLKL	HY/2012/08	2019-01-18	Mid-Ebb	SR7	Cloudy	Moderate	09:50	4.3	Bottom	3	1	18.8	8.2	30.7	6.9	3.8	4.6
TMCLKL	HY/2012/08	2019-01-18	Mid-Ebb	SR7	Cloudy	Moderate	09:50	4.3	Bottom	3	2	18.8	8.1	30.7	6.9	4.1	4.1
TMCLKL	HY/2012/08	2019-01-18	Mid-Ebb	IS17	Cloudy	Moderate	10:55	9.9	Surface	1	1	18.7	8.2	30.4	7	5.2	2.5
TMCLKL	HY/2012/08	2019-01-18	Mid-Ebb	IS17	Cloudy	Moderate	10:55	9.9	Surface	1	2	18.7	8.1	30.4	7	5.4	2.8
TMCLKL	HY/2012/08	2019-01-18	Mid-Ebb	IS17	Cloudy	Moderate	10:55	9.9	Middle	2	1	18.7	8.2	30.4	6.9	6.4	4
TMCLKL	HY/2012/08	2019-01-18	Mid-Ebb	IS17	Cloudy	Moderate	10:55	9.9	Middle	2	2	18.7	8.1	30.4	6.9	6.8	4
TMCLKL	HY/2012/08	2019-01-18	Mid-Ebb	IS17	Cloudy	Moderate	10:55	9.9	Bottom	3	1	18.7	8.2	30.4	7	7.4	2.8
TMCLKL	HY/2012/08	2019-01-18	Mid-Ebb	IS17	Cloudy	Moderate	10:55	9.9	Bottom	3	2	18.7	8.1	30.4	7	7.9	2.8
TMCLKL	HY/2012/08	2019-01-18	Mid-Flood	IS(Mf)11	Cloudy	Moderate	14:59	11.1	Surface	1	1	18.7	8.2	30.4	6.9	4.3	4.5
TMCLKL	HY/2012/08	2019-01-18	Mid-Flood	IS(Mf)11	Cloudy	Moderate	14:59	11.1	Surface	1	2	18.7	8.1	30.4	7	4.7	4.2
TMCLKL	HY/2012/08	2019-01-18	Mid-Flood	IS(Mf)11	Cloudy	Moderate	14:59	11.1	Middle	2	1	18.8	8.2	30.5	6.9	4.4	4.1
TMCLKL	HY/2012/08	2019-01-18	Mid-Flood	IS(Mf)11	Cloudy	Moderate	14:59	11.1	Middle	2	2	18.8	8.1	30.5	6.9	4.7	4.7
TMCLKL	HY/2012/08	2019-01-18	Mid-Flood	IS(Mf)11	Cloudy	Moderate	14:59	11.1	Bottom	3	1	18.8	8.2	30.6	6.9	6.1	6.4
TMCLKL	HY/2012/08	2019-01-18	Mid-Flood	IS(Mf)11	Cloudy	Moderate	14:59	11.1	Bottom	3	2	18.8	8.1	30.6	6.9	6.5	5.9
TMCLKL	HY/2012/08	2019-01-18	Mid-Flood	SR7	Cloudy	Moderate	15:54	4.5	Surface	1	1	18.9	8.2	30.8	6.9	2.7	4.1
TMCLKL	HY/2012/08	2019-01-18	Mid-Flood	SR7	Cloudy	Moderate	15:54	4.5	Surface	1	2	18.9	8.1	30.8	6.9	3.1	4.4
TMCLKL	HY/2012/08	2019-01-18	Mid-Flood	SR7	Cloudy	Moderate	15:54	4.5	Middle	2	1						
TMCLKL	HY/2012/08	2019-01-18	Mid-Flood	SR7	Cloudy	Moderate	15:54	4.5	Middle	2	2						
TMCLKL	HY/2012/08	2019-01-18	Mid-Flood	SR7	Cloudy	Moderate	15:54	4.5	Bottom	3	1	18.9	8.2	30.9	6.9	3.1	3.7
TMCLKL	HY/2012/08	2019-01-18	Mid-Flood	SR7	Cloudy	Moderate	15:54	4.5	Bottom	3	2	18.9	8.1	30.9	6.8	3.3	3.9
TMCLKL	HY/2012/08	2019-01-18	Mid-Flood	IS17	Cloudy	Moderate	14:53	10.2	Surface	1	1	18.8	8.2	30	7.1	4.6	6.1
TMCLKL	HY/2012/08	2019-01-18	Mid-Flood	IS17	Cloudy	Moderate	14:53	10.2	Surface	1	2	18.8	8.2	30	7.1	5	6.3
TMCLKL	HY/2012/08	2019-01-18	Mid-Flood	IS17	Cloudy	Moderate	14:53	10.2	Middle	2	1	18.7	8.2	30.5	6.9	4.2	6.2
TMCLKL	HY/2012/08	2019-01-18	Mid-Flood	IS17	Cloudy	Moderate	14:53	10.2	Middle	2	2	18.7	8.1	30.5	6.9	4.6	7
TMCLKL	HY/2012/08	2019-01-18	Mid-Flood	IS17	Cloudy	Moderate	14:53	10.2	Bottom	3	1	18.7	8.2	30.5	6.9	4.7	6.5
TMCLKL	HY/2012/08	2019-01-18	Mid-Flood	IS17	Cloudy	Moderate	14:53	10.2	Bottom	3	2	18.7	8.1	30.5	6.9	5	7
TMCLKL	HY/2012/08	2019-01-21	Mid-Ebb	IS(Mf)11	Fine	Moderate	12:20	10.9	Surface	1	1	18.9	8.2	30.5	7.8	5	8.1
TMCLKL	HY/2012/08	2019-01-21	Mid-Ebb	IS(Mf)11	Fine	Moderate	12:20	10.9	Surface	1	2	18.9	8.2	30.5	7.8	5	8.3



Project	Works	Date	Tide	Stat	Weather	Sea Condition	Time	Water Depth	Level	Lev_Cod	Replicate	Temp(°C)	pH	Salinity(ppt)	DO(mg/L)	Turbidity(NTU)	SS(mg/L)
TMCLKL	HY/2012/08	2019-01-23	Mid-Flood	SR7	Fine	Moderate	08:45	4.2	Surface	1	1	18	8.1	30.5	8.1	9.6	9.1
TMCLKL	HY/2012/08	2019-01-23	Mid-Flood	SR7	Fine	Moderate	08:45	4.2	Surface	1	2	18	8.1	30.5	8	9.3	8.6
TMCLKL	HY/2012/08	2019-01-23	Mid-Flood	SR7	Fine	Moderate	08:45	4.2	Middle	2	1						
TMCLKL	HY/2012/08	2019-01-23	Mid-Flood	SR7	Fine	Moderate	08:45	4.2	Middle	2	2						
TMCLKL	HY/2012/08	2019-01-23	Mid-Flood	SR7	Fine	Moderate	08:45	4.2	Bottom	3	1	18	8.1	30.5	8.3	10.9	9.3
TMCLKL	HY/2012/08	2019-01-23	Mid-Flood	SR7	Fine	Moderate	08:45	4.2	Bottom	3	2	18	8.1	30.5	8.3	10.6	9.7
TMCLKL	HY/2012/08	2019-01-23	Mid-Flood	IS17	Fine	Moderate	09:55	10.5	Surface	1	1	18.2	8.2	30.6	7.8	9.1	10.7
TMCLKL	HY/2012/08	2019-01-23	Mid-Flood	IS17	Fine	Moderate	09:55	10.5	Surface	1	2	18.2	8.2	30.6	7.8	9.4	9.3
TMCLKL	HY/2012/08	2019-01-23	Mid-Flood	IS17	Fine	Moderate	09:55	10.5	Middle	2	1	18.1	8.2	30.5	7.8	8.5	9.3
TMCLKL	HY/2012/08	2019-01-23	Mid-Flood	IS17	Fine	Moderate	09:55	10.5	Middle	2	2	18.1	8.2	30.5	7.8	9	9.6
TMCLKL	HY/2012/08	2019-01-23	Mid-Flood	IS17	Fine	Moderate	09:55	10.5	Bottom	3	1	18.1	8.2	30.5	7.8	9.4	8.9
TMCLKL	HY/2012/08	2019-01-23	Mid-Flood	IS17	Fine	Moderate	09:55	10.5	Bottom	3	2	18.1	8.2	30.5	7.8	9.6	9.2
TMCLKL	HY/2012/08	2019-01-25	Mid-Ebb	IS(Mf)11	Sunny	Moderate	15:26	11.2	Surface	1	1	18.5	8.2	29.3	7.6	4.5	10.2
TMCLKL	HY/2012/08	2019-01-25	Mid-Ebb	IS(Mf)11	Sunny	Moderate	15:26	11.2	Surface	1	2	18.5	8.2	29.3	7.6	4.5	10.7
TMCLKL	HY/2012/08	2019-01-25	Mid-Ebb	IS(Mf)11	Sunny	Moderate	15:26	11.2	Middle	2	1	18.4	8.2	29.4	7.6	4.6	9.7
TMCLKL	HY/2012/08	2019-01-25	Mid-Ebb	IS(Mf)11	Sunny	Moderate	15:26	11.2	Middle	2	2	18.4	8.2	29.4	7.6	4.6	9.3
TMCLKL	HY/2012/08	2019-01-25	Mid-Ebb	IS(Mf)11	Sunny	Moderate	15:26	11.2	Bottom	3	1	18.2	8.2	29.4	7.5	8.1	7
TMCLKL	HY/2012/08	2019-01-25	Mid-Ebb	IS(Mf)11	Sunny	Moderate	15:26	11.2	Bottom	3	2	18.2	8.2	29.4	7.5	8.1	7.1
TMCLKL	HY/2012/08	2019-01-25	Mid-Ebb	SR7	Sunny	Moderate	16:21	4.6	Surface	1	1	18.6	8.2	29.6	7.5	3.7	7.4
TMCLKL	HY/2012/08	2019-01-25	Mid-Ebb	SR7	Sunny	Moderate	16:21	4.6	Surface	1	2	18.6	8.2	29.6	7.5	3.7	6.5
TMCLKL	HY/2012/08	2019-01-25	Mid-Ebb	SR7	Sunny	Moderate	16:21	4.6	Middle	2	1						
TMCLKL	HY/2012/08	2019-01-25	Mid-Ebb	SR7	Sunny	Moderate	16:21	4.6	Middle	2	2						
TMCLKL	HY/2012/08	2019-01-25	Mid-Ebb	SR7	Sunny	Moderate	16:21	4.6	Bottom	3	1	18.6	8.2	29.6	7.5	4.6	6.6
TMCLKL	HY/2012/08	2019-01-25	Mid-Ebb	SR7	Sunny	Moderate	16:21	4.6	Bottom	3	2	18.6	8.2	29.6	7.5	4.6	6.1
TMCLKL	HY/2012/08	2019-01-25	Mid-Ebb	IS17	Sunny	Moderate	15:18	10.3	Surface	1	1	18.4	8.2	29.4	7.6	5.7	10.1
TMCLKL	HY/2012/08	2019-01-25	Mid-Ebb	IS17	Sunny	Moderate	15:18	10.3	Surface	1	2	18.4	8.2	29.4	7.6	5.9	10.9
TMCLKL	HY/2012/08	2019-01-25	Mid-Ebb	IS17	Sunny	Moderate	15:18	10.3	Middle	2	1	18.4	8.2	29.4	7.6	7.7	11.7
TMCLKL	HY/2012/08	2019-01-25	Mid-Ebb	IS17	Sunny	Moderate	15:18	10.3	Middle	2	2	18.4	8.2	29.4	7.6	7.5	10.2
TMCLKL	HY/2012/08	2019-01-25	Mid-Ebb	IS17	Sunny	Moderate	15:18	10.3	Bottom	3	1	18.4	8.2	29.4	7.6	6.7	10.3
TMCLKL	HY/2012/08	2019-01-25	Mid-Ebb	IS17	Sunny	Moderate	15:18	10.3	Bottom	3	2	18.4	8.2	29.4	7.6	6.7	10.4
TMCLKL	HY/2012/08	2019-01-25	Mid-Flood	IS(Mf)11	Sunny	Moderate	10:11	11.4	Surface	1	1	18.1	8.2	29.5	7.5	10.6	17
TMCLKL	HY/2012/08	2019-01-25	Mid-Flood	IS(Mf)11	Sunny	Moderate	10:11	11.4	Surface	1	2	18.1	8.2	29.5	7.5	10.6	16
TMCLKL	HY/2012/08	2019-01-25	Mid-Flood	IS(Mf)11	Sunny	Moderate	10:11	11.4	Middle	2	1	18.1	8.2	29.5	7.5	9.5	16.9
TMCLKL	HY/2012/08	2019-01-25	Mid-Flood	IS(Mf)11	Sunny	Moderate	10:11	11.4	Middle	2	2	18.1	8.2	29.5	7.5	9.3	15.4
TMCLKL	HY/2012/08	2019-01-25	Mid-Flood	IS(Mf)11	Sunny	Moderate	10:11	11.4	Bottom	3	1	18.1	8.2	29.6	7.5	9.8	15.8
TMCLKL	HY/2012/08	2019-01-25	Mid-Flood	IS(Mf)11	Sunny	Moderate	10:11	11.4	Bottom	3	2	18.1	8.2	29.6	7.5	9.9	16.7
TMCLKL	HY/2012/08	2019-01-25	Mid-Flood	SR7	Sunny	Moderate	10:04	4.5	Surface	1	1	18.1	8.2	29.5	7.5	8.6	11.1
TMCLKL	HY/2012/08	2019-01-25	Mid-Flood	SR7	Sunny	Moderate	10:04	4.5	Surface	1	2	18.1	8.2	29.5	7.5	8.5	11.6
TMCLKL	HY/2012/08	2019-01-25	Mid-Flood	SR7	Sunny	Moderate	10:04	4.5	Middle	2	1						
TMCLKL	HY/2012/08	2019-01-25	Mid-Flood	SR7	Sunny	Moderate	10:04	4.5	Middle	2	2						
TMCLKL	HY/2012/08	2019-01-25	Mid-Flood	SR7	Sunny	Moderate	10:04	4.5	Bottom	3	1	18.1	8.2	29.6	7.5	9	10.8
TMCLKL	HY/2012/08	2019-01-25	Mid-Flood	SR7	Sunny	Moderate	10:04	4.5	Bottom	3	2	18.1	8.2	29.6	7.5	9.1	9.9
TMCLKL	HY/2012/08	2019-01-25	Mid-Flood	IS17	Sunny	Moderate	11:10	10	Surface	1	1	18.1	8.2	29.4	7.5	7.6	9.7
TMCLKL	HY/2012/08	2019-01-25	Mid-Flood	IS17	Sunny	Moderate	11:10	10	Surface	1	2	18.1	8.2	29.4	7.5	7.8	9
TMCLKL	HY/2012/08	2019-01-25	Mid-Flood	IS17	Sunny	Moderate	11:10	10	Middle	2	1	18.1	8.2	29.4	7.5	8.3	9.9
TMCLKL	HY/2012/08	2019-01-25	Mid-Flood	IS17	Sunny	Moderate	11:10	10	Middle	2	2	18.1	8.2	29.4	7.5	8.3	9.1
TMCLKL	HY/2012/08	2019-01-25	Mid-Flood	IS17	Sunny	Moderate	11:10	10	Bottom	3	1	18.1	8.2	29.4	7.5	8.8	9.9
TMCLKL	HY/2012/08	2019-01-25	Mid-Flood	IS17	Sunny	Moderate	11:10	10	Bottom	3	2	18.1	8.2	29.4	7.5	9	9.7
TMCLKL	HY/2012/08	2019-01-28	Mid-Ebb	IS(Mf)11	Fine	Moderate	06:11	11.3	Surface	1	1	18.3	8.2	29	8.1	2.5	4.2
TMCLKL	HY/2012/08	2019-01-28	Mid-Ebb	IS(Mf)11	Fine	Moderate	06:11	11.3	Surface	1	2	18.3	8.2	29	8	2.5	4.1
TMCLKL	HY/2012/08	2019-01-28	Mid-Ebb	IS(Mf)11	Fine	Moderate	06:11	11.3	Middle	2	1	18.4	8.2	29.4	8	2.2	5.8
TMCLKL	HY/2012/08	2019-01-28	Mid-Ebb	IS(Mf)11	Fine	Moderate	06:11	11.3	Middle	2	2	18.4	8.2	29.4	7.9	2.2	5.1
TMCLKL	HY/2012/08	2019-01-28	Mid-Ebb	IS(Mf)11	Fine	Moderate	06:11	11.3	Bottom	3	1	18.5	8.2	29.6	8	2.4	5.6
TMCLKL	HY/2012/08	2019-01-28	Mid-Ebb	IS(Mf)11	Fine	Moderate	06:11	11.3	Bottom	3	2	18.5	8.2	29.6	7.9	2.4	5
TMCLKL	HY/2012/08	2019-01-28	Mid-Ebb	SR7	Fine	Calm	05:20	4.3	Surface	1	1	18.4	8.2	29.3	8	2.3	4.4
TMCLKL	HY/2012/08	2019-01-28	Mid-Ebb	SR7	Fine	Calm	05:20	4.3	Surface	1	2	18.4	8.2	29.3	8	2.3	4.9
TMCLKL	HY/2012/08	2019-01-28	Mid-Ebb	SR7	Fine	Calm	05:20	4.3	Middle	2	1						
TMCLKL	HY/2012/08	2019-01-28	Mid-Ebb	SR7	Fine	Calm	05:20	4.3	Middle	2	2						

Project	Works	Date	Tide	Stat	Weather	Sea Condition	Time	Water Depth	Level	Lev_Cod	Replicate	Temp(°C)	pH	Salinity(ppt)	DO(mg/L)	Turbidity(NTU)	SS(mg/L)
TMCLKL	HY/2012/08	2019-01-28	Mid-Ebb	SR7	Fine	Calm	05:20	4.3	Bottom	3	1	18.4	8.2	29.4	8	2.2	3
TMCLKL	HY/2012/08	2019-01-28	Mid-Ebb	SR7	Fine	Calm	05:20	4.3	Bottom	3	2	18.4	8.2	29.4	8	2.2	3
TMCLKL	HY/2012/08	2019-01-28	Mid-Ebb	IS17	Fine	Moderate	06:18	9.8	Surface	1	1	18.3	8.2	29.4	8	2.2	3.4
TMCLKL	HY/2012/08	2019-01-28	Mid-Ebb	IS17	Fine	Moderate	06:18	9.8	Surface	1	2	18.3	8.2	29.4	7.9	2.2	4.2
TMCLKL	HY/2012/08	2019-01-28	Mid-Ebb	IS17	Fine	Moderate	06:18	9.8	Middle	2	1	18.4	8.2	29.5	7.9	2.4	3.7
TMCLKL	HY/2012/08	2019-01-28	Mid-Ebb	IS17	Fine	Moderate	06:18	9.8	Middle	2	2	18.4	8.2	29.4	7.9	2.4	3.3
TMCLKL	HY/2012/08	2019-01-28	Mid-Ebb	IS17	Fine	Moderate	06:18	9.8	Bottom	3	1	18.4	8.2	29.6	8.1	2.4	2.3
TMCLKL	HY/2012/08	2019-01-28	Mid-Ebb	IS17	Fine	Moderate	06:18	9.8	Bottom	3	2	18.4	8.2	29.6	8	2.4	3
TMCLKL	HY/2012/08	2019-01-28	Mid-Flood	IS(Mf)11	Fine	Moderate	11:58	11.1	Surface	1	1	18.3	8.2	29.2	8.1	5.6	6.9
TMCLKL	HY/2012/08	2019-01-28	Mid-Flood	IS(Mf)11	Fine	Moderate	11:58	11.1	Surface	1	2	18.3	8.2	29.2	8.1	5.5	6.9
TMCLKL	HY/2012/08	2019-01-28	Mid-Flood	IS(Mf)11	Fine	Moderate	11:58	11.1	Middle	2	1	18.3	8.2	29.3	8.1	6.1	8
TMCLKL	HY/2012/08	2019-01-28	Mid-Flood	IS(Mf)11	Fine	Moderate	11:58	11.1	Middle	2	2	18.3	8.2	29.2	8.1	6	7.7
TMCLKL	HY/2012/08	2019-01-28	Mid-Flood	IS(Mf)11	Fine	Moderate	11:58	11.1	Bottom	3	1	18.3	8.2	29.3	8.2	7.2	8
TMCLKL	HY/2012/08	2019-01-28	Mid-Flood	IS(Mf)11	Fine	Moderate	11:58	11.1	Bottom	3	2	18.3	8.2	29.3	8.1	7.2	8
TMCLKL	HY/2012/08	2019-01-28	Mid-Flood	SR7	Fine	Calm	12:47	4.3	Surface	1	1	18.5	8.2	29.3	8.1	4.4	5.9
TMCLKL	HY/2012/08	2019-01-28	Mid-Flood	SR7	Fine	Calm	12:47	4.3	Surface	1	2	18.5	8.2	29.3	8.1	3.9	6.4
TMCLKL	HY/2012/08	2019-01-28	Mid-Flood	SR7	Fine	Calm	12:47	4.3	Middle	2	1						
TMCLKL	HY/2012/08	2019-01-28	Mid-Flood	SR7	Fine	Calm	12:47	4.3	Middle	2	2						
TMCLKL	HY/2012/08	2019-01-28	Mid-Flood	SR7	Fine	Calm	12:47	4.3	Bottom	3	1	18.5	8.2	29.4	8.2	4.8	3.5
TMCLKL	HY/2012/08	2019-01-28	Mid-Flood	SR7	Fine	Calm	12:47	4.3	Bottom	3	2	18.5	8.2	29.4	8.2	4.7	4.9
TMCLKL	HY/2012/08	2019-01-28	Mid-Flood	IS17	Fine	Moderate	11:54	10	Surface	1	1	18.3	8.2	29.2	8	2.4	3.8
TMCLKL	HY/2012/08	2019-01-28	Mid-Flood	IS17	Fine	Moderate	11:54	10	Surface	1	2	18.3	8.2	29.2	8	2.4	3.6
TMCLKL	HY/2012/08	2019-01-28	Mid-Flood	IS17	Fine	Moderate	11:54	10	Middle	2	1	18.4	8.2	29.3	7.9	3.5	3.1
TMCLKL	HY/2012/08	2019-01-28	Mid-Flood	IS17	Fine	Moderate	11:54	10	Middle	2	2	18.3	8.2	29.3	7.9	3.2	3
TMCLKL	HY/2012/08	2019-01-28	Mid-Flood	IS17	Fine	Moderate	11:54	10	Bottom	3	1	18.4	8.2	29.5	8	4.7	5.3
TMCLKL	HY/2012/08	2019-01-28	Mid-Flood	IS17	Fine	Moderate	11:54	10	Bottom	3	2	18.4	8.2	29.5	7.9	4.7	5.7
TMCLKL	HY/2012/08	2019-01-30	Mid-Ebb	IS(Mf)11	Cloudy	Moderate	09:33	11.2	Surface	1	1	18.6	8.2	28.8	8.1	3.6	2.6
TMCLKL	HY/2012/08	2019-01-30	Mid-Ebb	IS(Mf)11	Cloudy	Moderate	09:33	11.2	Surface	1	2	18.6	8.1	29.2	8	3.7	3.4
TMCLKL	HY/2012/08	2019-01-30	Mid-Ebb	IS(Mf)11	Cloudy	Moderate	09:33	11.2	Middle	2	1	18.6	8.2	29.2	8	3.8	2.5
TMCLKL	HY/2012/08	2019-01-30	Mid-Ebb	IS(Mf)11	Cloudy	Moderate	09:33	11.2	Middle	2	2	18.6	8.1	29.6	7.9	3.8	2.4
TMCLKL	HY/2012/08	2019-01-30	Mid-Ebb	IS(Mf)11	Cloudy	Moderate	09:33	11.2	Bottom	3	1	18.6	8.2	29.3	8	3.8	1.9
TMCLKL	HY/2012/08	2019-01-30	Mid-Ebb	IS(Mf)11	Cloudy	Moderate	09:33	11.2	Bottom	3	2	18.6	8.1	29.6	8	3.9	1.3
TMCLKL	HY/2012/08	2019-01-30	Mid-Ebb	SR7	Cloudy	Moderate	08:35	4.5	Surface	1	1	18.5	8.2	28.8	8.1	1.8	0.6
TMCLKL	HY/2012/08	2019-01-30	Mid-Ebb	SR7	Cloudy	Moderate	08:35	4.5	Surface	1	2	18.5	8.1	29.2	8	2	0.8
TMCLKL	HY/2012/08	2019-01-30	Mid-Ebb	SR7	Cloudy	Moderate	08:35	4.5	Middle	2	1						
TMCLKL	HY/2012/08	2019-01-30	Mid-Ebb	SR7	Cloudy	Moderate	08:35	4.5	Middle	2	2						
TMCLKL	HY/2012/08	2019-01-30	Mid-Ebb	SR7	Cloudy	Moderate	08:35	4.5	Bottom	3	1	18.5	8.2	28.9	8.1	3.5	5.4
TMCLKL	HY/2012/08	2019-01-30	Mid-Ebb	SR7	Cloudy	Moderate	08:35	4.5	Bottom	3	2	18.6	8.1	29.3	8	3.6	6
TMCLKL	HY/2012/08	2019-01-30	Mid-Ebb	IS17	Fine	Moderate	09:45	9.3	Surface	1	1	18.6	8.2	29	8.1	3.3	2.9
TMCLKL	HY/2012/08	2019-01-30	Mid-Ebb	IS17	Fine	Moderate	09:45	9.3	Surface	1	2	18.6	8.1	29.4	8	3.4	2.7
TMCLKL	HY/2012/08	2019-01-30	Mid-Ebb	IS17	Fine	Moderate	09:45	9.3	Middle	2	1	18.6	8.2	29.3	8	2.8	2.6
TMCLKL	HY/2012/08	2019-01-30	Mid-Ebb	IS17	Fine	Moderate	09:45	9.3	Middle	2	2	18.6	8.1	29.7	7.9	2.9	2.7
TMCLKL	HY/2012/08	2019-01-30	Mid-Ebb	IS17	Fine	Moderate	09:45	9.3	Bottom	3	1	18.6	8.2	29.3	8	2.2	3.3
TMCLKL	HY/2012/08	2019-01-30	Mid-Ebb	IS17	Fine	Moderate	09:45	9.3	Bottom	3	2	18.6	8.1	29.7	8	2.1	2.5
TMCLKL	HY/2012/08	2019-01-30	Mid-Flood	IS(Mf)11	Cloudy	Moderate	14:02	12.4	Surface	1	1	19	8.1	27.8	8.4	2.3	0.8
TMCLKL	HY/2012/08	2019-01-30	Mid-Flood	IS(Mf)11	Cloudy	Moderate	14:02	12.4	Surface	1	2	19	8.2	27.3	8.5	2.3	0.8
TMCLKL	HY/2012/08	2019-01-30	Mid-Flood	IS(Mf)11	Cloudy	Moderate	14:02	12.4	Middle	2	1	18.6	8.1	29.6	7.8	3.9	1
TMCLKL	HY/2012/08	2019-01-30	Mid-Flood	IS(Mf)11	Cloudy	Moderate	14:02	12.4	Middle	2	2	18.6	8.2	29.2	7.8	4	0.7
TMCLKL	HY/2012/08	2019-01-30	Mid-Flood	IS(Mf)11	Cloudy	Moderate	14:02	12.4	Bottom	3	1	18.6	8.1	29.7	7.7	7	1.4
TMCLKL	HY/2012/08	2019-01-30	Mid-Flood	IS(Mf)11	Cloudy	Moderate	14:02	12.4	Bottom	3	2	18.6	8.2	29.3	7.8	7.1	1.5
TMCLKL	HY/2012/08	2019-01-30	Mid-Flood	SR7	Cloudy	Calm	13:55	5	Surface	1	1	19	8.1	28.1	8.5	2.2	0.7
TMCLKL	HY/2012/08	2019-01-30	Mid-Flood	SR7	Cloudy	Calm	13:55	5	Surface	1	2	19	8.2	27.7	8.5	2.3	1.3
TMCLKL	HY/2012/08	2019-01-30	Mid-Flood	SR7	Cloudy	Calm	13:55	5	Middle	2	1						
TMCLKL	HY/2012/08	2019-01-30	Mid-Flood	SR7	Cloudy	Calm	13:55	5	Middle	2	2						
TMCLKL	HY/2012/08	2019-01-30	Mid-Flood	SR7	Cloudy	Calm	13:55	5	Bottom	3	1	18.9	8.1	28.4	8.3	2.3	0.8
TMCLKL	HY/2012/08	2019-01-30	Mid-Flood	SR7	Cloudy	Calm	13:55	5	Bottom	3	2	18.9	8.2	28	8.3	2.3	1.3
TMCLKL	HY/2012/08	2019-01-30	Mid-Flood	IS17	Cloudy	Moderate	13:45	11.7	Surface	1	1	18.8	8.1	29.3	8.3	2.4	1.6
TMCLKL	HY/2012/08	2019-01-30	Mid-Flood	IS17	Cloudy	Moderate	13:45	11.7	Surface	1	2	18.8	8.1	29	8.3	2.3	1.8

Project	Works	Date	Tide	Stat	Weather	Sea Condition	Time	Water Depth	Level	Lev_Cod	Replicate	Temp(°C)	pH	Salinity(ppt)	DO(mg/L)	Turbidity(NTU)	SS(mg/L)
TMCLKL	HY/2012/08	2019-01-30	Mid-Flood	IS17	Cloudy	Moderate	13:45	11.7	Middle	2	1	18.6	8.1	29.7	7.7	2.4	1
TMCLKL	HY/2012/08	2019-01-30	Mid-Flood	IS17	Cloudy	Moderate	13:45	11.7	Middle	2	2	18.6	8.2	29.3	7.7	2.5	1.3
TMCLKL	HY/2012/08	2019-01-30	Mid-Flood	IS17	Cloudy	Moderate	13:45	11.7	Bottom	3	1	18.6	8.1	29.7	7.7	2.6	1.9
TMCLKL	HY/2012/08	2019-01-30	Mid-Flood	IS17	Cloudy	Moderate	13:45	11.7	Bottom	3	2	18.6	8.1	29.3	7.7	2.6	1.5