

Appendix L

Cumulative Statistics on
Exceedances, Complaints,
Notifications of Summons
and Successful Prosecutions

Table L1 *Cumulative Statistics on Exceedances*

| Parameters | Level of Exceedance | Total No. recorded in this reporting month | Total No. recorded since project commencement |
|---------------------------|----------------------------|---|--|
| 1-hr TSP | Action | 5 | 87 |
| | Limit | 1 | 6 |
| 24-hr TSP | Action | 0 | 8 |
| | Limit | 0 | 4 |
| Water Quality | Action | 0 | 20 |
| | Limit | 0 | 1 |
| Impact Dolphin Monitoring | Action | 0 | 11 |
| | Limit | 0 | 14 |

Table L2 *Cumulative Statistics on Complaints, Notifications of Summons and Successful Prosecutions*

| Reporting Period | Cumulative Statistics | | |
|---|------------------------------|---------------------------------|--------------------------------|
| | Complaints | Notifications of Summons | Successful Prosecutions |
| This Reporting Month (January 2019) | 0 | 0 | 0 |
| Total No. received since project commencement | 16 | 1 | 0 |

Email
message

Environmental
Resources
Management

To Ramboll Hong Kong, Limited (ENPO)

From ERM- Hong Kong, Limited

Ref/Project number Contract No. HY/2012/08 Tuen Mun–Chek Lap
Kok Link–Northern Connection Sub-sea Tunnel
Section

Subject Notification of Exceedance for Air Quality
Impact Monitoring

Date 17 January 2019

2507, 25/F One Harbourfront
18 Tak Fung Street
Hunghom, Kowloon
Hong Kong
Telephone: (852) 2271 3000
Facsimile: (852) 2723 5660



ERM

Dear Sir or Madam,

Please find attached the Notification of Exceedance (NOE) of the following
Log no.:

0212330_8January2019_1hrTSP_Station ASR5

One Action Level Exceedance was recorded on 8 January 2019.

Regards,

A handwritten signature in black ink that reads "Jasmine".

Dr Jasmine Ng
Environmental Team Leader

CONFIDENTIALITY NOTICE

This facsimile transmission is intended only for the use of the addressee and is confidential. If you are not the addressee it may be unlawful for you to read, copy, distribute, disclose or otherwise use the information in this facsimile. If you are not the intended recipient, please telephone or fax us.



ERM-Hong Kong, Limited

**CONTRACT NO. HY/2012/08
TUEN MUN – CHEK LAP KOK LINK –
NORTHERN CONNECTION SUB-SEA TUNNEL SECTION**

**Air Quality Impact Monitoring
Notification of Exceedance**

| | | |
|--|---|--|
| Log No. | 0212330_8January2019_1hrTSP_Station ASR5 [Total No. of Exceedances = 1] | |
| Date | 8 January 2019 (Measured) 17 January 2019 (Laboratory results received by ERM) | |
| Monitoring Station | ASR1, ASR5, ASR6, ASR10 and AQMS1 | |
| Parameter(s) with Exceedance(s) | 1-hr TSP | |
| Action Levels | 24-hr TSP ($\mu\text{g}/\text{m}^3$) | ASR1 = 213 ASR5 = 238 AQMS1 = 213 ASR6 = 238 ASR10 = 214 |
| | 1-hr TSP ($\mu\text{g}/\text{m}^3$) | ASR1 = 331 ASR5 = 340 AQMS1 = 335 ASR6 = 338 ASR10 = 337 |
| Limit Levels | 1-hr TSP ($\mu\text{g}/\text{m}^3$) | 500 |
| | 24-hr TSP ($\mu\text{g}/\text{m}^3$) | 260 |
| Measured Levels | Action Level Exceedance for 1-hr TSP is observed at ASR5 (354 $\mu\text{g}/\text{m}^3$) during 1320 - 1420 hrs. | |
| Works Undertaken (at the time of monitoring event) | On 8 January 2019, TBM tunnel works and surcharge removal was carried out at Portion N-C. | |
| Possible Reason for Action or Limit Level Exceedance(s) | <p>The exceedance is unlikely to be due to this Contract, in view of the following:</p> <ul style="list-style-type: none"> According to the construction information provided by the Contractor, the majority of construction works on 8 January 2019 was TBM tunnel works and surcharge removal. During the period of the land-based construction works, the Contractor has implemented the required mitigation measures as per the EP, approved EIA and Updated EM&A Manual (e.g. water spraying on exposed soil within the Project site and associated works areas; exposed soil covered by tarpaulin sheets). The exceedance is unlikely to be due to this Contract as dust suppression measures were implemented properly on site. Water spraying was applied on site to prevent dust. <p>Based on the above, the exceedances are unlikely to be due to this Contract.</p> | |

| | |
|-----------------------------------|--|
| Actions Taken/ To Be Taken | <p>According to the construction information provided by the Contractor, TBM tunnel works and surcharge removal was carried out on 8 January 2019. Dust suppression measures were properly implemented. Water spraying was applied to prevent dust. Photos are provided in Annex A. Water spraying record is also provided.</p> <p>The Contractor has been reminded to implement the required mitigation measures as per the EP, approved EIA and Updated EM&A Manual including watering to maintain all exposed road surfaces and dust sources wet, use of sprinklers for water spraying, covering the materials having the potential to create dust by clean tarpaulin, use of water truck and watering on all exposed soil within the Project site) throughout the construction period.</p> |
| Remarks | <p>The monitoring results, wind data and the locations of air quality monitoring stations are attached.</p> |



Annex A Photos provided by the Contractor

*Note: Photos taken on 8/1/2019



Water truck is used for water spraying at the works area. (Works Area Portion N-C)



Water spraying was applied on the main haul road. (Works Area Portion N-A)



Annex A Photos taken during AQM

*Note: Photos taken on 8/1/2019



ASR5



ASR5

Air quality monitoring results on 8/1/2019

| Project | Works | Date | Station | Weather | Start time | Parameters | Results | Unit |
|---------|------------|------------|---------|---------|------------|-------------|---------|-------|
| TMCLKL | HY/2012/08 | 2019-01-08 | AQMS1 | Cloudy | 13:41 | 1-hour TSP | 179 | ug/m3 |
| TMCLKL | HY/2012/08 | 2019-01-08 | AQMS1 | Cloudy | 14:43 | 1-hour TSP | 192 | ug/m3 |
| TMCLKL | HY/2012/08 | 2019-01-08 | AQMS1 | Cloudy | 15:45 | 1-hour TSP | 193 | ug/m3 |
| TMCLKL | HY/2012/08 | 2019-01-08 | ASR1 | Cloudy | 13:30 | 1-hour TSP | 184 | ug/m3 |
| TMCLKL | HY/2012/08 | 2019-01-08 | ASR1 | Cloudy | 14:32 | 1-hour TSP | 281 | ug/m3 |
| TMCLKL | HY/2012/08 | 2019-01-08 | ASR1 | Cloudy | 15:34 | 1-hour TSP | 193 | ug/m3 |
| TMCLKL | HY/2012/08 | 2019-01-08 | ASR10 | Cloudy | 13:00 | 1-hour TSP | 162 | ug/m3 |
| TMCLKL | HY/2012/08 | 2019-01-08 | ASR10 | Cloudy | 14:02 | 1-hour TSP | 189 | ug/m3 |
| TMCLKL | HY/2012/08 | 2019-01-08 | ASR10 | Cloudy | 15:04 | 1-hour TSP | 192 | ug/m3 |
| TMCLKL | HY/2012/08 | 2019-01-08 | ASR5 | Cloudy | 13:20 | 1-hour TSP | 354 | ug/m3 |
| TMCLKL | HY/2012/08 | 2019-01-08 | ASR5 | Cloudy | 14:22 | 1-hour TSP | 292 | ug/m3 |
| TMCLKL | HY/2012/08 | 2019-01-08 | ASR5 | Cloudy | 15:24 | 1-hour TSP | 275 | ug/m3 |
| TMCLKL | HY/2012/08 | 2019-01-08 | ASR6 | Cloudy | 13:10 | 1-hour TSP | 239 | ug/m3 |
| TMCLKL | HY/2012/08 | 2019-01-08 | ASR6 | Cloudy | 14:12 | 1-hour TSP | 231 | ug/m3 |
| TMCLKL | HY/2012/08 | 2019-01-08 | ASR6 | Cloudy | 15:14 | 1-hour TSP | 197 | ug/m3 |
| TMCLKL | HY/2012/08 | 2019-01-08 | AQMS1 | Cloudy | 16:47 | 24-hour TSP | 97 | ug/m3 |
| TMCLKL | HY/2012/08 | 2019-01-08 | ASR1 | Cloudy | 16:36 | 24-hour TSP | 135 | ug/m3 |
| TMCLKL | HY/2012/08 | 2019-01-08 | ASR10 | Cloudy | 16:06 | 24-hour TSP | 90 | ug/m3 |
| TMCLKL | HY/2012/08 | 2019-01-08 | ASR5 | Cloudy | 16:26 | 24-hour TSP | 175 | ug/m3 |
| TMCLKL | HY/2012/08 | 2019-01-08 | ASR6 | Cloudy | 16:16 | 24-hour TSP | 119 | ug/m3 |

| Meteorological Data for Impact Monitoring in the reporting period | | | |
|---|--------------|-----------------------------|-----------------------------------|
| Date (yy-mm-dd) | Time (24hrs) | Average of Wind Speed (m/s) | Average of Wind Direction(degree) |
| 19/01/08 | 0:00 | 0 | - |
| 19/01/08 | 1:00 | 0 | - |
| 19/01/08 | 2:00 | 0 | - |
| 19/01/08 | 3:00 | 0.4 | 47 |
| 19/01/08 | 4:00 | 0.9 | 44 |
| 19/01/08 | 5:00 | 1.3 | 93 |
| 19/01/08 | 6:00 | 0.9 | 111 |
| 19/01/08 | 7:00 | 1.3 | 95 |
| 19/01/08 | 8:00 | 0.4 | 88 |
| 19/01/08 | 9:00 | 0.9 | 113 |
| 19/01/08 | 10:00 | 0.4 | 163 |
| 19/01/08 | 11:00 | 0.9 | 159 |
| 19/01/08 | 12:00 | 1.3 | 228 |
| 19/01/08 | 13:00 | 0.9 | 210 |
| 19/01/08 | 14:00 | 0.9 | 204 |
| 19/01/08 | 15:00 | 0.9 | 221 |
| 19/01/08 | 16:00 | 0.4 | 250 |
| 19/01/08 | 17:00 | 0.9 | 182 |
| 19/01/08 | 18:00 | 1.8 | 345 |
| 19/01/08 | 19:00 | 1.3 | 309 |
| 19/01/08 | 20:00 | 1.3 | 295 |
| 19/01/08 | 21:00 | 0.9 | 299 |
| 19/01/08 | 22:00 | 1.3 | 297 |
| 19/01/08 | 23:00 | 0.4 | 346 |

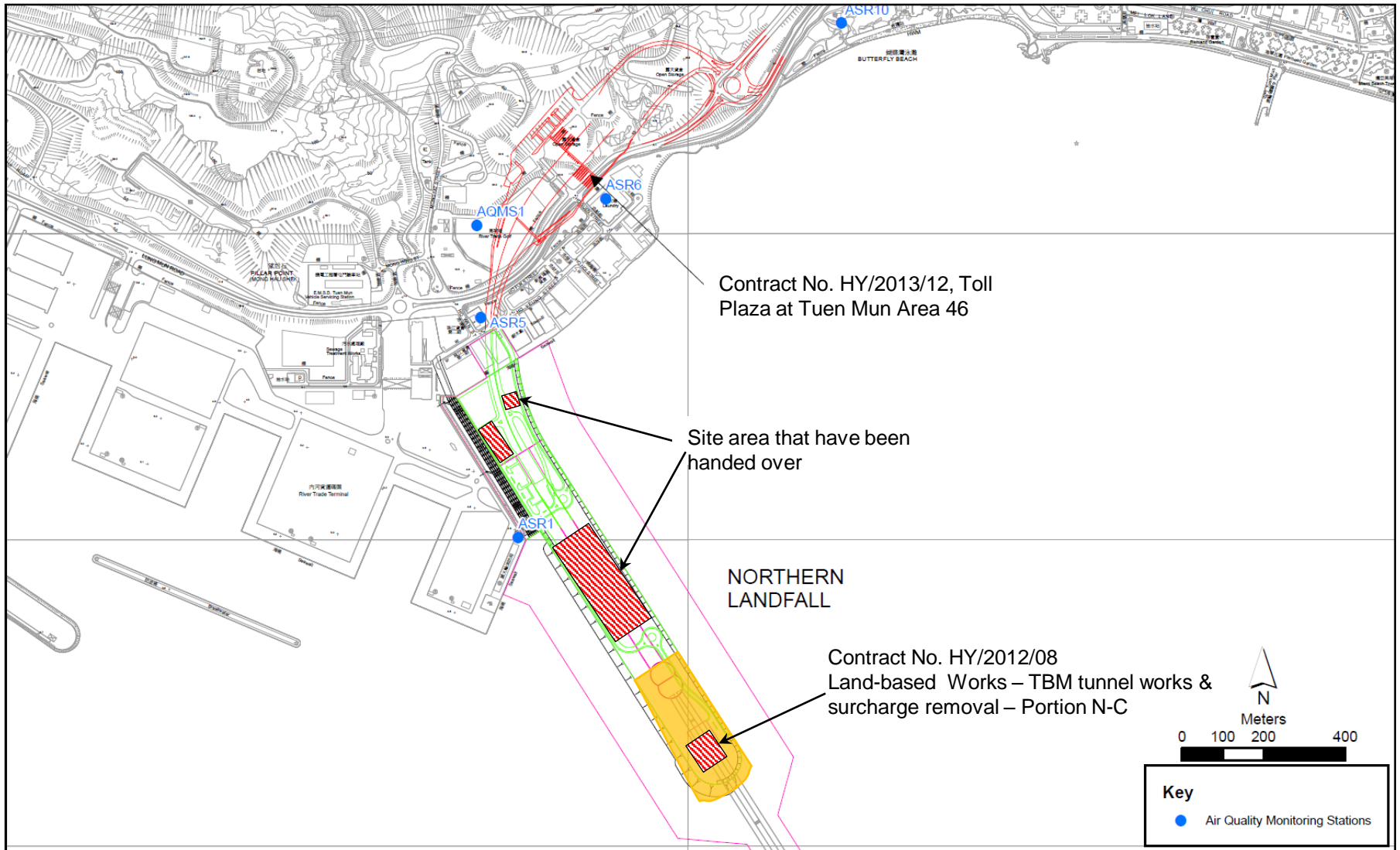


Figure 1

Indicative Construction Works Area on 8 January 2019

Site Location 地盤位置: Northern Landfill
Date 日期: 5 Jan 2019 to 至 11 Jan 2019

| | Time 時間 | Monday 星期一 | Tuesday 星期二 | Wednesday 星期三 | Thursday 星期四 | Friday 星期五 | Saturday 星期六 | Sunday 星期日 |
|----|--------------------------------------|---------------|----------------|------------------|-----------------|---------------|-----------------|---------------|
| 1 | 8:00 – 8:45 | ✓ | ✓ | ✓ | ✓ | ✓ | ✓ | ✓ |
| 2 | 8:45 – 9:30 | ✓ | ✓ | ✓ | ✓ | ✓ | ✓ | ✓ |
| 3 | 9:30 – 10:15 | ✓ | ✓ | ✓ | ✓ | ✓ | ✓ | ✓ |
| 4 | 10:15 – 11:00 | ✓ | ✓ | ✓ | ✓ | ✓ | ✓ | ✓ |
| 5 | 11:00 – 11:45 | ✓ | ✓ | ✓ | ✓ | ✓ | ✓ | ✓ |
| 6 | 11:45 – 12:30 | ✓ | ✓ | ✓ | ✓ | ✓ | ✓ | ✓ |
| 7 | 12:30 – 13:15 | ✓ | ✓ | ✓ | ✓ | ✓ | ✓ | ✓ |
| 8 | 13:15 – 14:00 | ✓ | ✓ | ✓ | ✓ | ✓ | ✓ | ✓ |
| 9 | 14:00 – 14:45 | ✓ | ✓ | ✓ | ✓ | ✓ | ✓ | ✓ |
| 10 | 14:45 – 15:30 | ✓ | ✓ | ✓ | ✓ | ✓ | ✓ | ✓ |
| 11 | 15:30 – 16:45 | ✓ | ✓ | ✓ | ✓ | ✓ | ✓ | ✓ |
| 12 | 16:45 – 17:30 | ✓ | ✓ | ✓ | ✓ | ✓ | ✓ | ✓ |
| | Verified by Site Foreman 地盤科文簽署確認 | ✓ | ✓ | ✓ | ✓ | ✓ | ✓ | ✓ |

| Night shift 夜間工作 (if necessary 如需要) | | | | | | | | |
|-------------------------------------|---------------|--|--|--|--|--|--|--|
| | 17:30 – 19:00 | | | | | | | |
| | 19:00 – 20:30 | | | | | | | |
| | 20:30 – 22:00 | | | | | | | |
| | 22:00 – 23:00 | | | | | | | |

*Please - tick (✓) in the box if complete the spraying of water.
circle (O) in the box if it is raining.

*如果 - 已經完成灑水, 請於方格內加上剔號(✓)。
是下雨天, 請於方格內加上圓圈(O)。

Remarks:

- Pursuant to EP Clause 3.15, the Permit Holder shall undertake watering at least 12 times per day on all exposed soil within the Project site and associated work areas in Tuen Mun area throughout the construction phase.
- Spraying position includes the main haul road, open area, slopes, stockpiles and any other dusty materials.
- If it is raining, no water spraying is needed.
- The no of spraying will be increased due to site condition.

備註:

- 根據環境許可證 3.15 條例, 在整個施工階段內, 許可證持有人須每天至少 12 次在屯門區項目工地和相關的工作區域內的所有暴露土壤灑水。
- 灑水位置包括主要運輸道路, 空曠地帶, 斜坡, 存料堆, 以及任何其他產生塵埃物料。
- 當下雨時, 地盤將不需要灑水。
- 如果地盤情況更改或有需要時, 灑水次數會相應增加。

Email
message

**Environmental
Resources
Management**

To Ramboll Hong Kong, Limited (ENPO)

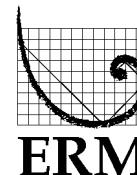
From ERM- Hong Kong, Limited

Ref/Project number Contract No. HY/2012/08 Tuen Mun–Chek Lap
Kok Link–Northern Connection Sub-sea Tunnel
Section

Subject Notification of Exceedance for Air Quality
Impact Monitoring

Date 17 January 2019

2507, 25/F One Harbourfront
18 Tak Fung Street
Hung Hom, Kowloon
Hong Kong
Telephone: (852) 2271 3000
Facsimile: (852) 2723 5660



Dear Sir or Madam,

Please find attached the Notification of Exceedance (NOE) of the following
Log no.:

0212330_11January2019_1hrTSP_Station ASR1
0212330_11January2019_1hrTSP_Station ASR5

Two Action Level Exceedances were recorded on 11 January 2019.

Regards,



Dr Jasmine Ng
Environmental Team Leader

CONFIDENTIALITY NOTICE

This facsimile transmission is intended only for the use of the addressee and is confidential. If you are not the addressee it may be unlawful for you to read, copy, distribute, disclose or otherwise use the information in this facsimile. If you are not the intended recipient, please telephone or fax us.



ERM-Hong Kong, Limited

CONTRACT NO. HY/2012/08
 TUEN MUN – CHEK LAP KOK LINK –
 NORTHERN CONNECTION SUB-SEA TUNNEL SECTION

Air Quality Impact Monitoring
 Notification of Exceedance

| | | |
|--|--|--|
| Log No. | 0212330_11January2019_1hrTSP_Station ASR1 0212330_11January2019_1hrTSP_Station ASR5 [Total No. of Exceedances = 2] | |
| Date | 11 January 2019 (Measured) 17 January 2019 (Laboratory results received by ERM) | |
| Monitoring Station | ASR1, ASR5, ASR6, ASR10 and AQMS1 | |
| Parameter(s) with Exceedance(s) | 1-hr TSP | |
| Action Levels | 24-hr TSP ($\mu\text{g}/\text{m}^3$) | ASR1 = 213 ASR5 = 238 AQMS1 = 213 ASR6 = 238 ASR10 = 214 |
| | 1-hr TSP ($\mu\text{g}/\text{m}^3$) | ASR1 = 331 ASR5 = 340 AQMS1 = 335 ASR6 = 338 ASR10 = 337 |
| Limit Levels | 1-hr TSP ($\mu\text{g}/\text{m}^3$) | 500 |
| | 24-hr TSP ($\mu\text{g}/\text{m}^3$) | 260 |
| Measured Levels | Action Level Exceedance for 1-hr TSP is observed at ASR1 ($335 \mu\text{g}/\text{m}^3$) during 1339 – 1439 hrs. Action Level Exceedance for 1-hr TSP is observed at ASR5 ($398 \mu\text{g}/\text{m}^3$) during 1327 – 1427 hrs. | |
| Works Undertaken (at the time of monitoring event) | On 11 January 2019, TBM tunnel works and surcharge removal was carried out at Portion N-C. | |
| Possible Reason for Action or Limit Level Exceedance(s) | <p>The exceedance is unlikely to be due to this Contract, in view of the following:</p> <ul style="list-style-type: none"> According to the construction information provided by the Contractor, the majority of construction works on 11 January 2019 was TBM tunnel works and surcharge removal. During the period of the land-based construction works, the Contractor has implemented the required mitigation measures as per the EP, approved EIA and Updated EM&A Manual (e.g. water spraying on exposed soil within the Project site and associated works areas; exposed soil covered by tarpaulin sheets). The exceedance is unlikely to be due to this Contract as dust suppression measures were implemented properly on site. Water spraying was applied on site to prevent dust. <p>Based on the above, the exceedances are unlikely to be due to this Contract.</p> | |

| | |
|-----------------------------------|--|
| Actions Taken/ To Be Taken | <p>Follow-up site inspection was carried out on 23 January 2019. Dust suppression measures were properly implemented. Water spraying was applied to prevent dust. Photos are provided in Annex A.</p> <p>The Contractor has been reminded to implement the required mitigation measures as per the EP, approved EIA and Updated EM&A Manual including watering to maintain all exposed road surfaces and dust sources wet, use of sprinklers for water spraying, covering the materials having the potential to create dust by clean tarpaulin, use of water truck and watering on all exposed soil within the Project site) throughout the construction period.</p> |
| Remarks | <p>The monitoring results, wind data and the locations of air quality monitoring stations are attached.</p> |



Annex A Photos taken during site inspection

*Note: Photos taken on 23/1/2019



Water truck is used for water spraying at works area. (Works Area Portion N-C)



Exposed soil is covered by tarpaulin sheets to prevent dust. (Works Area Portion N-C)

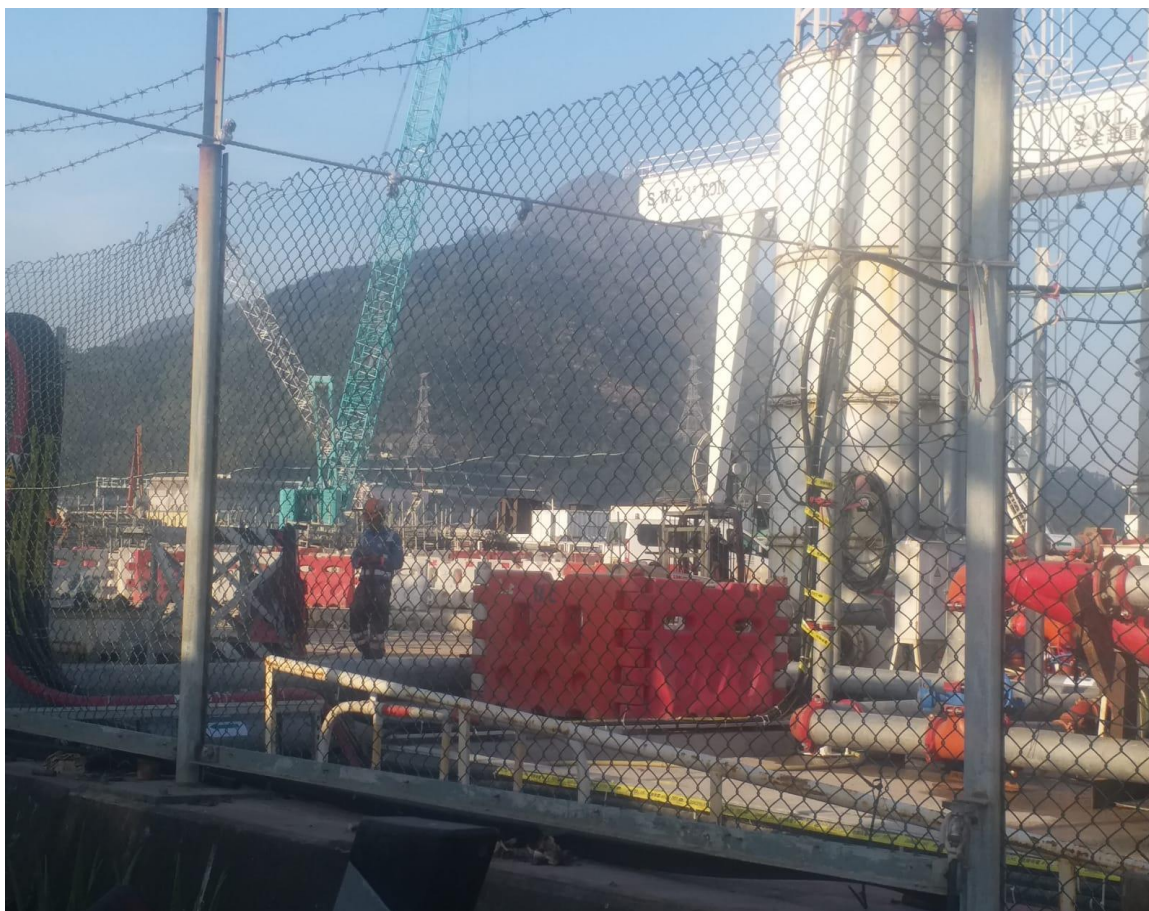


Annex A Photos taken during AQM

*Note: Photos taken on 11/1/2019



ASR5



ASR1

Air quality monitoring results on 11/1/2019

| Project | Works | Date | Station | Weather | Start time | Parameters | Results | Unit |
|---------|------------|-----------|---------|---------|------------|-------------|---------|-------|
| TMCLKL | HY/2012/08 | 11/1/2019 | AQMS1 | Cloudy | 13:50 | 1-hour TSP | 214 | ug/m3 |
| TMCLKL | HY/2012/08 | 11/1/2019 | AQMS1 | Cloudy | 14:52 | 1-hour TSP | 90 | ug/m3 |
| TMCLKL | HY/2012/08 | 11/1/2019 | AQMS1 | Cloudy | 15:54 | 1-hour TSP | 108 | ug/m3 |
| TMCLKL | HY/2012/08 | 11/1/2019 | ASR1 | Cloudy | 13:39 | 1-hour TSP | 335 | ug/m3 |
| TMCLKL | HY/2012/08 | 11/1/2019 | ASR1 | Cloudy | 14:41 | 1-hour TSP | 129 | ug/m3 |
| TMCLKL | HY/2012/08 | 11/1/2019 | ASR1 | Cloudy | 15:43 | 1-hour TSP | 120 | ug/m3 |
| TMCLKL | HY/2012/08 | 11/1/2019 | ASR10 | Cloudy | 13:05 | 1-hour TSP | 116 | ug/m3 |
| TMCLKL | HY/2012/08 | 11/1/2019 | ASR10 | Cloudy | 14:07 | 1-hour TSP | 155 | ug/m3 |
| TMCLKL | HY/2012/08 | 11/1/2019 | ASR10 | Cloudy | 15:09 | 1-hour TSP | 95 | ug/m3 |
| TMCLKL | HY/2012/08 | 11/1/2019 | ASR5 | Cloudy | 13:27 | 1-hour TSP | 398 | ug/m3 |
| TMCLKL | HY/2012/08 | 11/1/2019 | ASR5 | Cloudy | 14:29 | 1-hour TSP | 327 | ug/m3 |
| TMCLKL | HY/2012/08 | 11/1/2019 | ASR5 | Cloudy | 15:31 | 1-hour TSP | 243 | ug/m3 |
| TMCLKL | HY/2012/08 | 11/1/2019 | ASR6 | Cloudy | 13:16 | 1-hour TSP | 214 | ug/m3 |
| TMCLKL | HY/2012/08 | 11/1/2019 | ASR6 | Cloudy | 14:18 | 1-hour TSP | 125 | ug/m3 |
| TMCLKL | HY/2012/08 | 11/1/2019 | ASR6 | Cloudy | 15:20 | 1-hour TSP | 153 | ug/m3 |
| TMCLKL | HY/2012/08 | 11/1/2019 | AQMS1 | Cloudy | 16:56 | 24-hour TSP | 127 | ug/m3 |
| TMCLKL | HY/2012/08 | 11/1/2019 | ASR1 | Cloudy | 16:45 | 24-hour TSP | 120 | ug/m3 |
| TMCLKL | HY/2012/08 | 11/1/2019 | ASR10 | Cloudy | 16:11 | 24-hour TSP | 137 | ug/m3 |
| TMCLKL | HY/2012/08 | 11/1/2019 | ASR5 | Cloudy | 16:33 | 24-hour TSP | 196 | ug/m3 |
| TMCLKL | HY/2012/08 | 11/1/2019 | ASR6 | Cloudy | 16:22 | 24-hour TSP | 191 | ug/m3 |

| Meteorological Data for Impact Monitoring in the reporting period | | | |
|---|--------------|-----------------------------|-----------------------------------|
| Date (yy-mm-dd) | Time (24hrs) | Average of Wind Speed (m/s) | Average of Wind Direction(degree) |
| 19/01/11 | 0:00 | 0 | - |
| 19/01/11 | 1:00 | 0 | - |
| 19/01/11 | 2:00 | 0 | - |
| 19/01/11 | 3:00 | 0 | - |
| 19/01/11 | 4:00 | 0.9 | 89 |
| 19/01/11 | 5:00 | 0.4 | 113 |
| 19/01/11 | 6:00 | 1.3 | 51 |
| 19/01/11 | 7:00 | 1.8 | 71 |
| 19/01/11 | 8:00 | 0.9 | 137 |
| 19/01/11 | 9:00 | 0.9 | 284 |
| 19/01/11 | 10:00 | 0.9 | 162 |
| 19/01/11 | 11:00 | 1.3 | 223 |
| 19/01/11 | 12:00 | 0.9 | 160 |
| 19/01/11 | 13:00 | 0.9 | 112 |
| 19/01/11 | 14:00 | 1.3 | 155 |
| 19/01/11 | 15:00 | 2.2 | 69 |
| 19/01/11 | 16:00 | 1.8 | 55 |
| 19/01/11 | 17:00 | 0.9 | 90 |
| 19/01/11 | 18:00 | 0.4 | 88 |
| 19/01/11 | 19:00 | 0 | - |
| 19/01/11 | 20:00 | 0 | - |
| 19/01/11 | 21:00 | 0 | - |
| 19/01/11 | 22:00 | 0 | - |
| 19/01/11 | 23:00 | 0 | - |

Site Location 地盤位置: Northern Landfall
Date 日期: 7 Jan 2019 to 至 13 Jan 2019

| | Time 時間 | Monday 星期一 | Tuesday 星期二 | Wednesday 星期三 | Thursday 星期四 | Friday 星期五 | Saturday 星期六 | Sunday 星期日 |
|----|--------------------------------------|---------------|----------------|------------------|-----------------|---------------|-----------------|---------------|
| 1 | 8:00 – 8:45 | / | / | / | / | / | / | / |
| 2 | 8:45 – 9:30 | / | / | / | / | / | / | / |
| 3 | 9:30 – 10:15 | / | / | / | / | / | / | / |
| 4 | 10:15 – 11:00 | / | / | / | / | / | / | / |
| 5 | 11:00 – 11:45 | / | / | / | / | / | / | / |
| 6 | 11:45 – 12:30 | / | / | / | / | / | / | / |
| 7 | 12:30 – 13:15 | / | / | / | / | / | / | / |
| 8 | 13:15 – 14:00 | / | / | / | / | / | / | / |
| 9 | 14:00 – 14:45 | / | / | / | / | / | / | / |
| 10 | 14:45 – 15:30 | / | / | / | / | / | / | / |
| 11 | 15:30 – 16:45 | / | / | / | / | / | / | / |
| 12 | 16:45 – 17:30 | / | / | / | / | / | / | / |
| | Verified by Site Foreman 地盤科文簽署確認 | 7 | 7 | 7 | 7 | 7 | 7 | 7 |

| Night shift 夜間工作 (if necessary 如需要) | | | | | | | | |
|-------------------------------------|---------------|--|--|--|--|--|--|--|
| | 17:30 – 19:00 | | | | | | | |
| | 19:00 – 20:30 | | | | | | | |
| | 20:30 – 22:00 | | | | | | | |
| | 22:00 – 23:00 | | | | | | | |

*Please - tick (√) in the box if complete the spraying of water.
circle (O) in the box if it is raining.

*如果 - 已經完成灑水, 請於方格內加上剔號(√)。
是下雨天, 請於方格內加上圓圈(O)。

Remarks:

- (1) Pursuant to EP Clause 3.15, the Permit Holder shall undertake watering at least 12 times per day on all exposed soil within the Project site and associated work areas in Tuen Mun area throughout the construction phase.
- (2) Spraying position includes the main haul road, open area, slopes, stockpiles and any other dusty materials.
- (3) If it is raining, no water spraying is needed.
- (4) The no of spraying will be increased due to site condition.

備註:

- (1) 根據環境許可證 3.15 條例, 在整個施工階段內, 許可證持有人須每天至少 12 次在屯門區項目工地和相關的工作區域內的所有暴露土壤灑水。
- (2) 灑水位置包括主要運輸道路, 空曠地帶, 斜坡, 存料堆, 以及任何其他產生塵埃物料。
- (3) 當下雨時, 地盤將不需要灑水。
- (4) 如果地盤情況更改或有需要時, 灑水次數會相應增加。

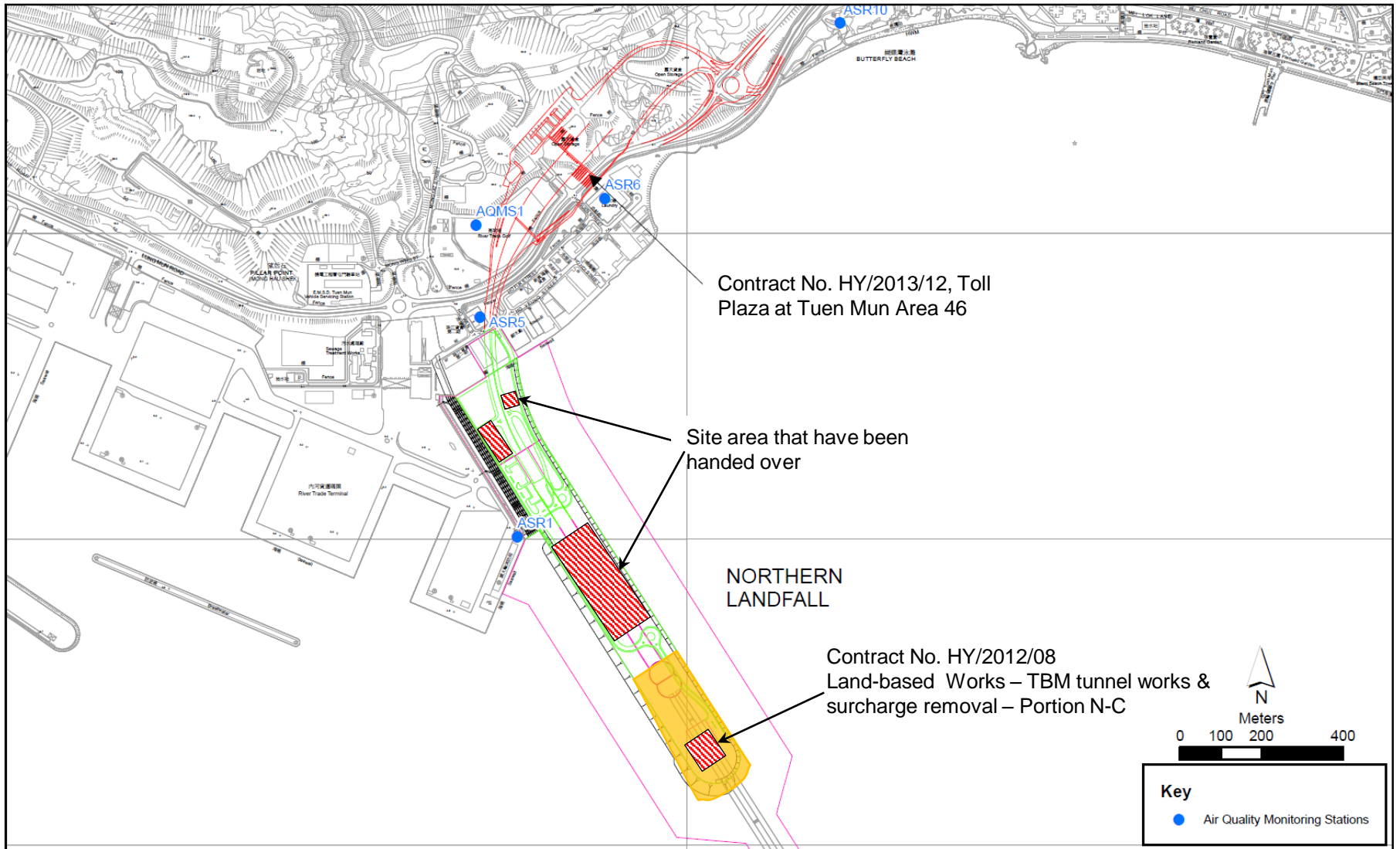


Figure 1

Indicative Construction Works Area on 11 January 2019

Email
message

Environmental
Resources
Management

To Ramboll Hong Kong, Limited (ENPO)

From ERM- Hong Kong, Limited

Ref/Project number Contract No. HY/2012/08 Tuen Mun–Chek Lap
Kok Link–Northern Connection Sub-sea Tunnel
Section

Subject Notification of Exceedance for Air Quality
Impact Monitoring

Date 29 January 2019

2507, 25/F One Harbourfront
18 Tak Fung Street
Hung Hom, Kowloon
Hong Kong
Telephone: (852) 2271 3000
Facsimile: (852) 2723 5660



ERM

Dear Sir or Madam,

Please find attached the Notification of Exceedance (NOE) of the following
Log no.:

0212330_17January2019_1hrTSP_Station ASR1
0212330_17January2019_1hrTSP_Station ASR5

One Action Level and one Limit Level Exceedances were recorded on 17
January 2019.

Regards,

A handwritten signature in black ink that reads "Jasmine".

Dr Jasmine Ng
Environmental Team Leader

CONFIDENTIALITY NOTICE

This facsimile transmission is intended only for the use of the addressee and is confidential. If you are not the addressee it may be unlawful for you to read, copy, distribute, disclose or otherwise use the information in this facsimile. If you are not the intended recipient, please telephone or fax us.



ERM-Hong Kong, Limited

CONTRACT NO. HY/2012/08
 TUEN MUN – CHEK LAP KOK LINK –
 NORTHERN CONNECTION SUB-SEA TUNNEL SECTION

Air Quality Impact Monitoring
 Notification of Exceedance

| | | |
|--|--|--|
| Log No. | 0212330_17January2019_1hrTSP_Station ASR1 0212330_17January2019_1hrTSP_Station ASR5 [Total No. of Exceedances = 2] | |
| Date | 17 January 2019 (Measured) 29 January 2019 (Laboratory results received by ERM) | |
| Monitoring Station | ASR1, ASR5, ASR6, ASR10 and AQMS1 | |
| Parameter(s) with Exceedance(s) | 1-hr TSP | |
| Action Levels | 24-hr TSP ($\mu\text{g}/\text{m}^3$) | ASR1 = 213 ASR5 = 238 AQMS1 = 213 ASR6 = 238 ASR10 = 214 |
| | 1-hr TSP ($\mu\text{g}/\text{m}^3$) | ASR1 = 331 ASR5 = 340 AQMS1 = 335 ASR6 = 338 ASR10 = 337 |
| Limit Levels | 1-hr TSP ($\mu\text{g}/\text{m}^3$) | 500 |
| | 24-hr TSP ($\mu\text{g}/\text{m}^3$) | 260 |
| Measured Levels | Action Level Exceedance for 1-hr TSP is observed at ASR5 ($354 \mu\text{g}/\text{m}^3$) during 1552 – 1652 hrs. Limit Level Exceedance for 1-hr TSP is observed at ASR1 ($519 \mu\text{g}/\text{m}^3$) during 1604 – 1704 hrs. | |
| Works Undertaken (at the time of monitoring event) | On 17 January 2019, TBM tunnel works and surcharge removal was carried out at Portion N-C. | |
| Possible Reason for Action or Limit Level Exceedance(s) | <p>The exceedance is unlikely to be due to this Contract, in view of the following:</p> <ul style="list-style-type: none"> According to the construction information provided by the Contractor, the majority of construction works on 17 January 2019 was TBM tunnel works and surcharge removal. During the period of the land-based construction works, the Contractor has implemented the required mitigation measures as per the EP, approved EIA and Updated EM&A Manual (e.g. water spraying on exposed soil within the Project site and associated works areas; exposed soil covered by tarpaulin sheets). The exceedance is unlikely to be due to this Contract as dust suppression measures were implemented properly on site. Water truck was used for water spraying at the works area to prevent dust. With reference to the recorded wind direction (ranged between 284° and 351°, blowing from a north-westerly direction) and wind speed (ranged from 0.9 to 2.2 m/s) during the period of the observed 1-hr TSP exceedances, Stations ASR1 and ASR5 are located upstream to the construction works at Portion N-C. Thus the observed exceedances should not be affected by the dust, if any, generated by the construction activities under this Contract. <p>Based on the above, the exceedances are unlikely to be due to this Contract.</p> | |

| | |
|-----------------------------------|--|
| Actions Taken/ To Be Taken | <p>According to the construction information provided by the Contractor, TBM tunnel works and surcharge removal was carried out on 17 January 2019. Dust suppression measures were properly implemented. Water spraying was applied to prevent dust. Photos taken on 17 January 2019 are provided in Annex A.</p> <p>The Contractor has been reminded to implement the required mitigation measures as per the EP, approved EIA and Updated EM&A Manual including watering to maintain all exposed road surfaces and dust sources wet, use of sprinklers for water spraying, covering the materials having the potential to create dust by clean tarpaulin, use of water truck and watering on all exposed soil within the Project site) throughout the construction period.</p> |
| Remarks | <p>The monitoring results, wind data and the locations of air quality monitoring stations are attached.</p> |



Annex A Photos taken during site inspection

*Note: Photos taken on 17/1/2019



Water truck is used for water spraying to prevent dust. (Works Area Portion N-A)



Water truck is used for water spraying at works area. (Works Area Portion N-C)



Annex A Photos taken during site inspection

*Note: Photos taken on 17/1/2019



Exposed soil are covered by tarpaulin sheets to prevent dust. (Works Area Portion N-C)



Annex A Photos taken during AQM

*Note: Photos taken on 17/1/2019



ASR5



ASR1

Air quality monitoring results on 17/1/2019

| Project | Works | Date | Station | Weather | Start time | Parameters | Results | Unit |
|---------|------------|-----------|---------|---------|------------|-------------|---------|-------|
| TMCLKL | HY/2012/08 | 17/1/2019 | AQMS1 | Cloudy | 14:13 | 1-hour TSP | 101 | ug/m3 |
| TMCLKL | HY/2012/08 | 17/1/2019 | AQMS1 | Cloudy | 15:14 | 1-hour TSP | 194 | ug/m3 |
| TMCLKL | HY/2012/08 | 17/1/2019 | AQMS1 | Cloudy | 16:16 | 1-hour TSP | 165 | ug/m3 |
| TMCLKL | HY/2012/08 | 17/1/2019 | ASR1 | Cloudy | 14:00 | 1-hour TSP | 154 | ug/m3 |
| TMCLKL | HY/2012/08 | 17/1/2019 | ASR1 | Cloudy | 15:02 | 1-hour TSP | 200 | ug/m3 |
| TMCLKL | HY/2012/08 | 17/1/2019 | ASR1 | Cloudy | 16:04 | 1-hour TSP | 519 | ug/m3 |
| TMCLKL | HY/2012/08 | 17/1/2019 | ASR10 | Cloudy | 13:26 | 1-hour TSP | 223 | ug/m3 |
| TMCLKL | HY/2012/08 | 17/1/2019 | ASR10 | Cloudy | 14:28 | 1-hour TSP | 156 | ug/m3 |
| TMCLKL | HY/2012/08 | 17/1/2019 | ASR10 | Cloudy | 15:30 | 1-hour TSP | 113 | ug/m3 |
| TMCLKL | HY/2012/08 | 17/1/2019 | ASR5 | Cloudy | 13:48 | 1-hour TSP | 140 | ug/m3 |
| TMCLKL | HY/2012/08 | 17/1/2019 | ASR5 | Cloudy | 14:50 | 1-hour TSP | 269 | ug/m3 |
| TMCLKL | HY/2012/08 | 17/1/2019 | ASR5 | Cloudy | 15:52 | 1-hour TSP | 354 | ug/m3 |
| TMCLKL | HY/2012/08 | 17/1/2019 | ASR6 | Cloudy | 13:37 | 1-hour TSP | 97 | ug/m3 |
| TMCLKL | HY/2012/08 | 17/1/2019 | ASR6 | Cloudy | 14:39 | 1-hour TSP | 304 | ug/m3 |
| TMCLKL | HY/2012/08 | 17/1/2019 | ASR6 | Cloudy | 15:41 | 1-hour TSP | 255 | ug/m3 |
| TMCLKL | HY/2012/08 | 17/1/2019 | AQMS1 | Cloudy | 17:18 | 24-hour TSP | 82 | ug/m3 |
| TMCLKL | HY/2012/08 | 17/1/2019 | ASR1 | Cloudy | 17:06 | 24-hour TSP | 137 | ug/m3 |
| TMCLKL | HY/2012/08 | 17/1/2019 | ASR10 | Cloudy | 16:32 | 24-hour TSP | 73 | ug/m3 |
| TMCLKL | HY/2012/08 | 17/1/2019 | ASR5 | Cloudy | 16:54 | 24-hour TSP | 126 | ug/m3 |
| TMCLKL | HY/2012/08 | 17/1/2019 | ASR6 | Cloudy | 16:43 | 24-hour TSP | 98 | ug/m3 |

| Meteorological Data for Impact Monitoring in the reporting period | | | |
|--|---------------------|------------------------------------|--|
| Date (yy-mm-dd) | Time (24hrs) | Average of Wind Speed (m/s) | Average of Wind Direction(degree) |
| 19/01/17 | 0:00 | 1.3 | 342 |
| 19/01/17 | 1:00 | 1.8 | 340 |
| 19/01/17 | 2:00 | 2.2 | 32 |
| 19/01/17 | 3:00 | 1.8 | 30 |
| 19/01/17 | 4:00 | 1.8 | 22 |
| 19/01/17 | 5:00 | 1.8 | 49 |
| 19/01/17 | 6:00 | 1.8 | 17 |
| 19/01/17 | 7:00 | 1.3 | 55 |
| 19/01/17 | 8:00 | 0.9 | 32 |
| 19/01/17 | 9:00 | 1.8 | 45 |
| 19/01/17 | 10:00 | 2.2 | 47 |
| 19/01/17 | 11:00 | 2.2 | 52 |
| 19/01/17 | 12:00 | 1.8 | 29 |
| 19/01/17 | 13:00 | 2.2 | 207 |
| 19/01/17 | 14:00 | 2.2 | 274 |
| 19/01/17 | 15:00 | 3.1 | 276 |
| 19/01/17 | 16:00 | 2.2 | 284 |
| 19/01/17 | 17:00 | 0.9 | 351 |
| 19/01/17 | 18:00 | 1.8 | 90 |
| 19/01/17 | 19:00 | 1.3 | 85 |
| 19/01/17 | 20:00 | 0.9 | 32 |
| 19/01/17 | 21:00 | 1.3 | 37 |
| 19/01/17 | 22:00 | 1.3 | 42 |
| 19/01/17 | 23:00 | 1.3 | 44 |

Site Location 地盤位置: Northern Landfall
Date 日期: 14 Jan 2019 to 至 20 Jan 2019

| | Time 時間 | Monday 星期一 | Tuesday 星期二 | Wednesday 星期三 | Thursday 星期四 | Friday 星期五 | Saturday 星期六 | Sunday 星期日 |
|----|--------------------------------------|---------------|----------------|------------------|-----------------|---------------|-----------------|---------------|
| 1 | 8:00 – 8:45 | / | / | / | / | / | / | / |
| 2 | 8:45 – 9:30 | / | / | / | / | / | / | / |
| 3 | 9:30 – 10:15 | / | / | / | / | / | / | / |
| 4 | 10:15 – 11:00 | / | / | / | / | / | / | / |
| 5 | 11:00 – 11:45 | / | / | / | / | / | / | / |
| 6 | 11:45 – 12:30 | / | / | / | / | / | / | / |
| 7 | 12:30 – 13:15 | / | / | / | / | / | / | / |
| 8 | 13:15 – 14:00 | / | / | / | / | / | / | / |
| 9 | 14:00 – 14:45 | / | / | / | / | / | / | / |
| 10 | 14:45 – 15:30 | / | / | / | / | / | / | / |
| 11 | 15:30 – 16:45 | / | / | / | / | / | / | / |
| 12 | 16:45 – 17:30 | / | / | / | / | / | / | / |
| | Verified by Site Foreman 地盤科文簽署確認 | 7 | 7 | 7 | 7 | 7 | 7 | 7 |

| Night shift 夜間工作 (if necessary 如需要) | | | | | | | | |
|-------------------------------------|---------------|--|--|--|--|--|--|--|
| | 17:30 – 19:00 | | | | | | | |
| | 19:00 – 20:30 | | | | | | | |
| | 20:30 – 22:00 | | | | | | | |
| | 22:00 – 23:00 | | | | | | | |

*Please - tick (√) in the box if complete the spraying of water. *如果 - 已經完成灑水, 請於方格內加上剔號(√).
circle (O) in the box if it is raining. 是下雨天, 請於方格內加上圓圈(O).

Remarks:

- Pursuant to EP Clause 3.15, the Permit Holder shall undertake watering at least 12 times per day on all exposed soil within the Project site and associated work areas in Tuen Mun area throughout the construction phase.
- Spraying position includes the main haul road, open area, slopes, stockpiles and any other dusty materials.
- If it is raining, no water spraying is needed.
- The no of spraying will be increased due to site condition.

備註:

- 根據環境許可證 3.15 條例, 在整個施工階段內, 許可證持有人須每天至少 12 次在屯門區項目工地和相關的工作區域內的所有暴露土壤灑水。
- 灑水位置包括主要運輸道路, 空曠地帶, 斜坡, 存料堆, 以及任何其他產生塵埃物料。
- 當下雨時, 地盤將不需要灑水。
- 如果地盤情況更改或有需要時, 灑水次數會相應增加。

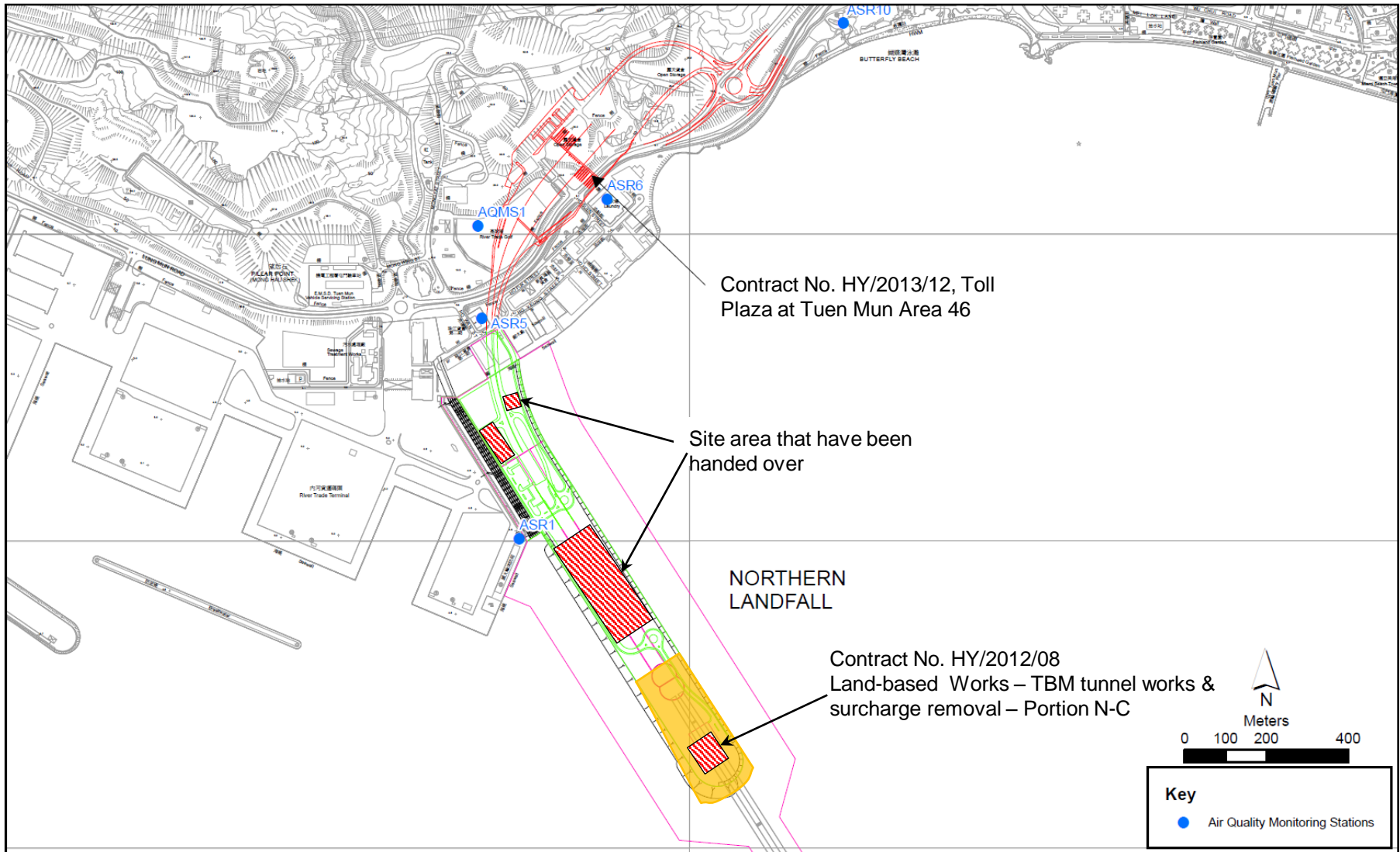


Figure 1

Indicative Construction Works Area on 17 January 2019

Email
message

**Environmental
Resources
Management**

To Ramboll Hong Kong, Limited (ENPO)

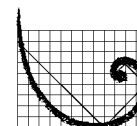
From ERM- Hong Kong, Limited

Ref/Project number Contract No. HY/2012/08 Tuen Mun–Chek Lap
Kok Link–Northern Connection Sub-sea Tunnel
Section

Subject Notification of Exceedance for Air Quality
Impact Monitoring

Date 8 February 2019

2507, 25/F One Harbourfront
18 Tak Fung Street
Hunghom, Kowloon
Hong Kong
Telephone: (852) 2271 3000
Facsimile: (852) 2723 5660



ERM

Dear Sir or Madam,

Please find attached the Notification of Exceedance (NOE) of the following
Log no.:

0212330_26January2019_1hrTSP_Station ASR5

One Action Level Exceedance was recorded on 26 January 2019.

Regards,



Dr Jasmine Ng
Environmental Team Leader

CONFIDENTIALITY NOTICE

This facsimile transmission is intended only for the use of the addressee and is confidential. If you are not the addressee it may be unlawful for you to read, copy, distribute, disclose or otherwise use the information in this facsimile. If you are not the intended recipient, please telephone or fax us.



ERM-Hong Kong, Limited

CONTRACT NO. HY/2012/08
 TUEN MUN – CHEK LAP KOK LINK –
 NORTHERN CONNECTION SUB-SEA TUNNEL SECTION

Air Quality Impact Monitoring
 Notification of Exceedance

| | | |
|---|--|--|
| Log No. | 0212330_26January2019_1hrTSP_Station ASR5 [Total No. of Exceedances = 1] | |
| Date | 26 January 2019 (Measured) 8 February 2019 (Laboratory results received by ERM) | |
| Monitoring Station | ASR1, ASR5, ASR6, ASR10 and AQMS1 | |
| Parameter(s) with Exceedance(s) | 1-hr TSP | |
| Action Levels | 24-hr TSP ($\mu\text{g}/\text{m}^3$) | ASR1 = 213 ASR5 = 238 AQMS1 = 213 ASR6 = 238 ASR10 = 214 |
| | 1-hr TSP ($\mu\text{g}/\text{m}^3$) | ASR1 = 331 ASR5 = 340 AQMS1 = 335 ASR6 = 338 ASR10 = 337 |
| Limit Levels | 1-hr TSP ($\mu\text{g}/\text{m}^3$) | 500 |
| | 24-hr TSP ($\mu\text{g}/\text{m}^3$) | 260 |
| Measured Levels | Action Level Exceedance for 1-hr TSP is observed at ASR5 (399 $\mu\text{g}/\text{m}^3$) during 0830 – 0930 hrs. | |
| Works Undertaken (at the time of monitoring event) | On 26 January 2019, TBM tunnel works and surcharge removal was carried out at Portion N-C. | |
| Possible Reason for Action or Limit Level Exceedance(s) | <p>The exceedance is unlikely to be due to this Contract, in view of the following:</p> <ul style="list-style-type: none"> According to the construction information provided by the Contractor, the majority of construction works on 26 January 2019 was TBM tunnel works and surcharge removal. During the period of the land-based construction works, the Contractor has implemented the required mitigation measures as per the EP, approved EIA and Updated EM&A Manual (e.g. water spraying on exposed soil within the Project site and associated works areas; exposed soil covered by tarpaulin sheets). The exceedance is unlikely to be due to this Contract as dust suppression measures were implemented properly on site. Water spraying was applied on site to prevent dust. With reference to the recorded wind direction (ranged between 143° and 158°, blowing from a south-easterly direction) and wind speed (ranged from 1.3 to 2.2 m/s) during the period of the observed 1-hr TSP exceedances, Stations ASR5 are located downstream to the construction works at Portion N-C. However, with similar wind direction and wind speed in the 2nd and 3rd hour of the 1-hour TSP monitoring, no exceedances were recorded. According to the water spraying record, water spraying was also applied every 45 minutes to prevent dust. <p>Based on the above, the exceedance is unlikely to be due to this Contract.</p> | |

| | |
|-----------------------------------|---|
| Actions Taken/ To Be Taken | <p>Follow-up site inspection was carried out on 8 February 2019. Dust suppression measures were properly implemented. Water spraying was applied to prevent dust. Photos are provided in Annex A. Photos taken during AQM are also provided.</p> <p>The Contractor has been reminded to implement the required mitigation measures as per the EP, approved EIA and Updated EM&A Manual including watering to maintain all exposed road surfaces and dust sources wet, use of sprinklers for water spraying, covering the materials having the potential to create dust by clean tarpaulin, use of water truck and watering on all exposed soil within the Project site) throughout the construction period.</p> |
| Remarks | <p>The monitoring results, wind data and the locations of air quality monitoring stations are attached.</p> |



Annex A Photos taken during site inspection

*Note: Photos taken on 8/2/2019



Water truck was used for water spraying to prevent dust. (Works Area Portion N-A)



Water spraying was applied on the main haul road. (Works Area Portion N-C)



Annex A Photos taken during site inspection

*Note: Photos taken on 8/2/2019



Exposed soil was covered by tarpaulin sheets to prevent dust. (Works Area Portion N-C)



Annex A Photos taken during AQM

*Note: Photos taken on 26/1/2019



ASR5



ASR5

Air quality monitoring results on 26/1/2019

| Project | Works | Date | Station | Weather | Start time | Parameters | Results | Unit |
|---------|------------|-----------|---------|---------|------------|-------------|---------|-------|
| TMCLKL | HY/2012/08 | 26/1/2019 | AQMS1 | Sunny | 8:53 | 1-hour TSP | 126 | ug/m3 |
| TMCLKL | HY/2012/08 | 26/1/2019 | AQMS1 | Sunny | 9:55 | 1-hour TSP | 69 | ug/m3 |
| TMCLKL | HY/2012/08 | 26/1/2019 | AQMS1 | Sunny | 10:57 | 1-hour TSP | 75 | ug/m3 |
| TMCLKL | HY/2012/08 | 26/1/2019 | ASR1 | Sunny | 8:42 | 1-hour TSP | 245 | ug/m3 |
| TMCLKL | HY/2012/08 | 26/1/2019 | ASR1 | Sunny | 9:44 | 1-hour TSP | 207 | ug/m3 |
| TMCLKL | HY/2012/08 | 26/1/2019 | ASR1 | Sunny | 10:46 | 1-hour TSP | 112 | ug/m3 |
| TMCLKL | HY/2012/08 | 26/1/2019 | ASR10 | Sunny | 8:08 | 1-hour TSP | 106 | ug/m3 |
| TMCLKL | HY/2012/08 | 26/1/2019 | ASR10 | Sunny | 9:10 | 1-hour TSP | 74 | ug/m3 |
| TMCLKL | HY/2012/08 | 26/1/2019 | ASR10 | Sunny | 10:12 | 1-hour TSP | 71 | ug/m3 |
| TMCLKL | HY/2012/08 | 26/1/2019 | ASR5 | Sunny | 8:30 | 1-hour TSP | 399 | ug/m3 |
| TMCLKL | HY/2012/08 | 26/1/2019 | ASR5 | Sunny | 9:32 | 1-hour TSP | 208 | ug/m3 |
| TMCLKL | HY/2012/08 | 26/1/2019 | ASR5 | Sunny | 10:34 | 1-hour TSP | 208 | ug/m3 |
| TMCLKL | HY/2012/08 | 26/1/2019 | ASR6 | Sunny | 8:19 | 1-hour TSP | 304 | ug/m3 |
| TMCLKL | HY/2012/08 | 26/1/2019 | ASR6 | Sunny | 9:21 | 1-hour TSP | 111 | ug/m3 |
| TMCLKL | HY/2012/08 | 26/1/2019 | ASR6 | Sunny | 10:23 | 1-hour TSP | 141 | ug/m3 |
| TMCLKL | HY/2012/08 | 26/1/2019 | AQMS1 | Sunny | 11:59 | 24-hour TSP | 81 | ug/m3 |
| TMCLKL | HY/2012/08 | 26/1/2019 | ASR1 | Sunny | 11:48 | 24-hour TSP | 83 | ug/m3 |
| TMCLKL | HY/2012/08 | 26/1/2019 | ASR10 | Sunny | 11:14 | 24-hour TSP | 73 | ug/m3 |
| TMCLKL | HY/2012/08 | 26/1/2019 | ASR5 | Sunny | 11:36 | 24-hour TSP | 101 | ug/m3 |
| TMCLKL | HY/2012/08 | 26/1/2019 | ASR6 | Sunny | 11:25 | 24-hour TSP | 90 | ug/m3 |

Meteorological Data for Impact Monitoring in the reporting period

| Date (yy-mm-dd) | Time (24hrs) | Average of Wind Speed (m/s) | Average of Wind Direction(degree) |
|------------------------|---------------------|------------------------------------|--|
| 19/01/26 | 0:00 | 0 | - |
| 19/01/26 | 1:00 | 0 | - |
| 19/01/26 | 2:00 | 0.4 | 12 |
| 19/01/26 | 3:00 | 2.2 | 34 |
| 19/01/26 | 4:00 | 2.2 | 47 |
| 19/01/26 | 5:00 | 2.2 | 39 |
| 19/01/26 | 6:00 | 2.7 | 47 |
| 19/01/26 | 7:00 | 1.8 | 14 |
| 19/01/26 | 8:00 | 1.3 | 143 |
| 19/01/26 | 9:00 | 2.2 | 158 |
| 19/01/26 | 10:00 | 2.2 | 154 |
| 19/01/26 | 11:00 | 1.8 | 221 |
| 19/01/26 | 12:00 | 2.2 | 215 |
| 19/01/26 | 13:00 | 1.3 | 220 |
| 19/01/26 | 14:00 | 1.3 | 254 |
| 19/01/26 | 15:00 | 2.2 | 213 |
| 19/01/26 | 16:00 | 2.2 | 232 |
| 19/01/26 | 17:00 | 1.3 | 94 |
| 19/01/26 | 18:00 | 1.8 | 96 |
| 19/01/26 | 19:00 | 1.8 | 95 |
| 19/01/26 | 20:00 | 2.2 | 85 |
| 19/01/26 | 21:00 | 2.7 | 94 |
| 19/01/26 | 22:00 | 3.6 | 86 |
| 19/01/26 | 23:00 | 3.1 | 95 |

| Site Location 地盤位置: | | Northern Landfall | | | | | | |
|----------------------------|--|----------------------------|--------------------|----------------------|---------------------|-------------------|---------------------|-------------------|
| Date 日期: | | 21 Jun 2019 to 27 Jun 2019 | | | | | | |
| | Time 時間 | Monday 星期一 | Tuesday 星期二 | Wednesday 星期三 | Thursday 星期四 | Friday 星期五 | Saturday 星期六 | Sunday 星期日 |
| 1 | 8:00 – 8:45 | / | / | / | / | / | / | / |
| 2 | 8:45 – 9:30 | / | / | / | / | / | / | / |
| 3 | 9:30 – 10:15 | / | / | / | / | / | / | / |
| 4 | 10:15 – 11:00 | / | / | / | / | / | / | / |
| 5 | 11:00 – 11:45 | / | / | / | / | / | / | / |
| 6 | 11:45 – 12:30 | / | / | / | / | / | / | / |
| 7 | 12:30 – 13:15 | / | / | / | / | / | / | / |
| 8 | 13:15 – 14:00 | / | / | / | / | / | / | / |
| 9 | 14:00 – 14:45 | / | / | / | / | / | / | / |
| 10 | 14:45 – 15:30 | / | / | / | / | / | / | / |
| 11 | 15:30 – 16:45 | / | / | / | / | / | / | / |
| 12 | 16:45 – 17:30 | / | / | / | / | / | / | / |
| | Verified by Site Foreman 地盤科文簽署確認 | 7 | 7 | 7 | 7 | 7 | 7 | 7 |

| Night shift 夜間工作 (if necessary 如需要) | | | | | | | | |
|--|---------------|--|--|--|--|--|--|--|
| | 17:30 – 19:00 | | | | | | | |
| | 19:00 – 20:30 | | | | | | | |
| | 20:30 – 22:00 | | | | | | | |
| | 22:00 – 23:00 | | | | | | | |

*Please - tick (✓) in the box if complete the spraying of water.
circle (O) in the box if it is raining.

*如果 - 已經完成灑水, 請於方格內加上剔號(✓)。
是下雨天, 請於方格內加上圓圈(O)。

Remarks:

- Pursuant to EP Clause 3.15, the Permit Holder shall undertake watering at least 12 times per day on all exposed soil within the Project site and associated work areas in Tuen Mun area throughout the construction phase.
- Spraying position includes the main haul road, open area, slopes, stockpiles and any other dusty materials.
- If it is raining, no water spraying is needed.
- The no of spraying will be increased due to site condition.

備註:

- 根據環境許可證 3.15 條例, 在整個施工階段內, 許可證持有人須每天至少 12 次在屯門區項目工地和相關的工作區域內的所有暴露土壤灑水。
- 灑水位置包括主要運輸道路, 空曠地帶, 斜坡, 存料堆, 以及任何其他產生塵埃物料。
- 當下雨時, 地盤將不需要灑水。
- 如果地盤情況更改或有需要時, 灑水次數會相應增加。

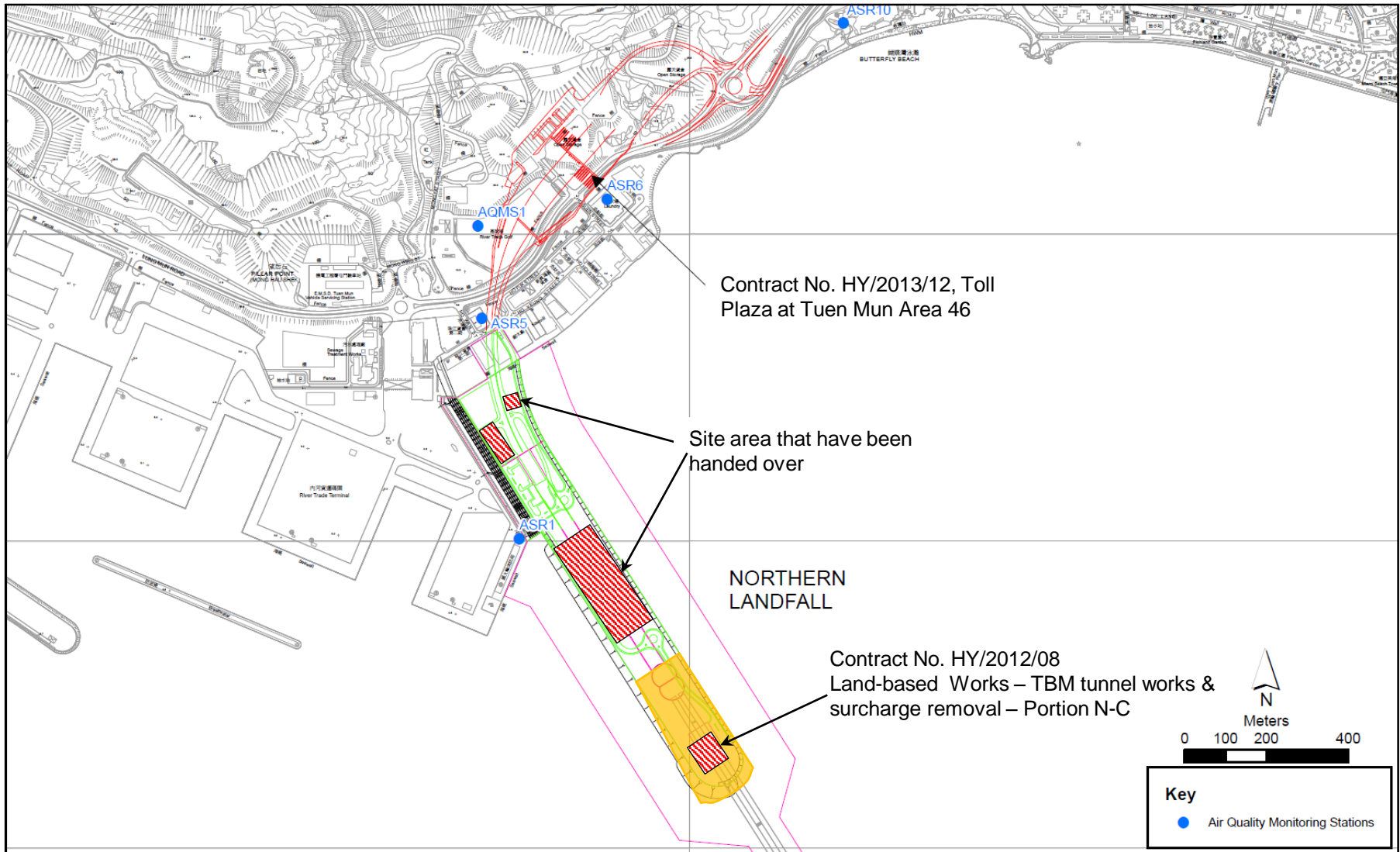


Figure 1

Indicative Construction Works Area on 26 January 2019