

Appendix B

Construction Programme

TMCLKL Northern Connection Sub-sea Tunnel Section

Contract Key Dates			
[KD-2b] Stage 2b Completion - TSS between CP33 to CP13	0		15-Apr-19*
[KD-10] Section 3A Completion - SVB	0		20-Jul-19*
[KD-10a] Stage 5 Completion - SVB BL2	0		11-May-19*

Portion Handover Dates			
N5 - Handover	0		30-Apr-19*
N11A - Handover	0		15-Feb-19*
N11B - Handover	0		15-Feb-19*
N13Ji, Jii, Ki & Kii - Handover for E&M Contract scope	0		15-Feb-19*
N13B - Handover	0		12-Apr-19*

North Approach Ramp			
Portion N12 Section			
NAR - N12 - Open Cut Section - Structure Start	0	04-Jun-18	
NAR - N12 - Open cut Section - Ramp Structure	84	04-Jun-18	11-Sep-18
NAR - N12 - Open Cut Excavation - Bay 2	12	20-Jun-18	04-Jul-18
NAR - N12 - Bay 2 Structure	36	06-Jul-18	16-Aug-18
NAR - Sheet Pile at bay 6 & 7	18	20-Jun-18	11-Jul-18
NAR - Dewatering well Installation (Bay 3 to 6)	36	12-Jul-18	22-Aug-18
NAR - Pumping Test (Bay 3 to 6)	12	23-Aug-18	05-Sep-18
NAR - Excavation & Strut Installtion (Bay 3 to 6)	36	06-Sep-18	20-Oct-18
NAR - Bay 3 - Base Slab + Retaining Wall	48	20-Sep-18	17-Nov-18
NAR - Bay 4 - Base Slab + Retaining Wall	72	06-Oct-18	02-Jan-19
NAR - Bay 5 - Base Slab + Retaining Wall	72	22-Oct-18	16-Jan-19

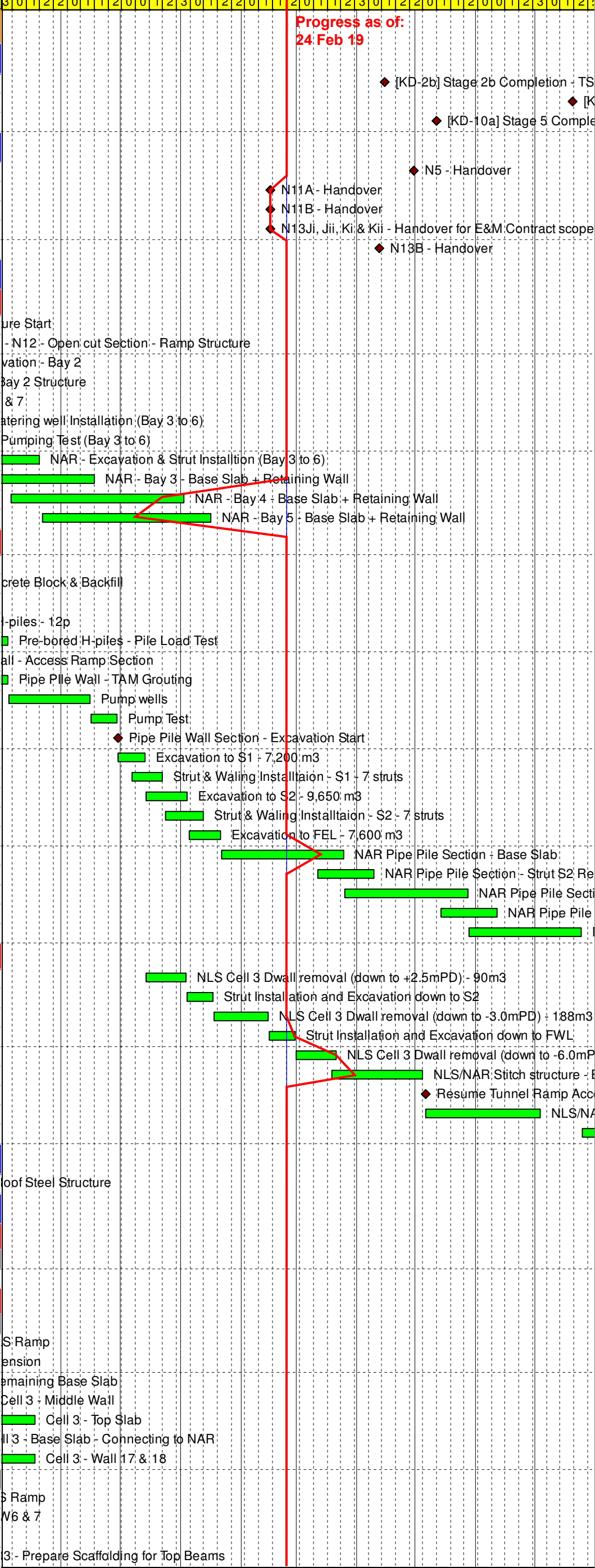
Access Ramp Section			
NLS Temp Access Ramp - Closure	0		04-Jun-18
NLS Temp Access Ramp - Concrete Block & Backfill	18	04-Jun-18	25-Jun-18
Predrilling - 4 G.I.	12	26-Jun-18	10-Jul-18
Pre-bored H-piles - 12p	36	11-Jul-18	21-Aug-18
Pre-bored H-piles - Pile Load Test	36	22-Aug-18	04-Oct-18
Pipe Pile Wall - Access Ramp Section	36	11-Jul-18	21-Aug-18
Pipe Pile Wall - TAM Grouting	36	22-Aug-18	04-Oct-18
Pump wells	35	05-Oct-18	15-Nov-18
Pump Test	12	16-Nov-18	29-Nov-18
Pipe Pile Wall Section - Excavation Start	0	30-Nov-18	
Excavation to S1 - 7,200 m3	12	30-Nov-18	13-Dec-18
Strut & Waling Installtaion - S1 - 7 struts	14	07-Dec-18	22-Dec-18
Excavation to S2 - 9,650 m3	16	14-Dec-18	04-Jan-19
Strut & Waling Installtaion - S2 - 7 struts	15	24-Dec-18	12-Jan-19
Excavation to FEL - 7,600 m3	14	05-Jan-19	21-Jan-19
NAR Pipe Pile Section - Base Slab	48	22-Jan-19	25-Mar-19
NAR Pipe Pile Section - Strut S2 Removal	24	12-Mar-19	09-Apr-19
NAR Pipe Pile Section - Wall up to S1	48	26-Mar-19	27-May-19
NAR Pipe Pile Section - Strut S1 Removal	24	14-May-19	11-Jun-19
NAR Pipe Pile Section - Wall Remaining	48	28-May-19	24-Jul-19

NLS Interface (OAP-NAR-DWG-10442-B)			
NLS Cell 3 Dwall removal (down to +2.5mPD) - 90m3	15	14-Dec-18	03-Jan-19
Strut Installation and Excavation down to S2	12	04-Jan-19	17-Jan-19
NLS Cell 3 Dwall removal (down to -3.0mPD) - 188m3	18	18-Jan-19	14-Feb-19
Strut Installation and Excavation down to FWL	12	15-Feb-19	28-Feb-19
NLS Cell 3 Dwall removal (down to -6.0mPD) - 134m3	18	01-Mar-19	21-Mar-19
NLS/NAR Stitch structure - Base Slab & S2 removed	36	19-Mar-19	04-May-19
Resume Tunnel Ramp Access	0	06-May-19	
NLS/NAR Stitch structure - Remaining Wall Structure & Stru	48	06-May-19	03-Jul-19
NAR Parapet, Cable Trough	58	25-Jul-19	02-Oct-19*

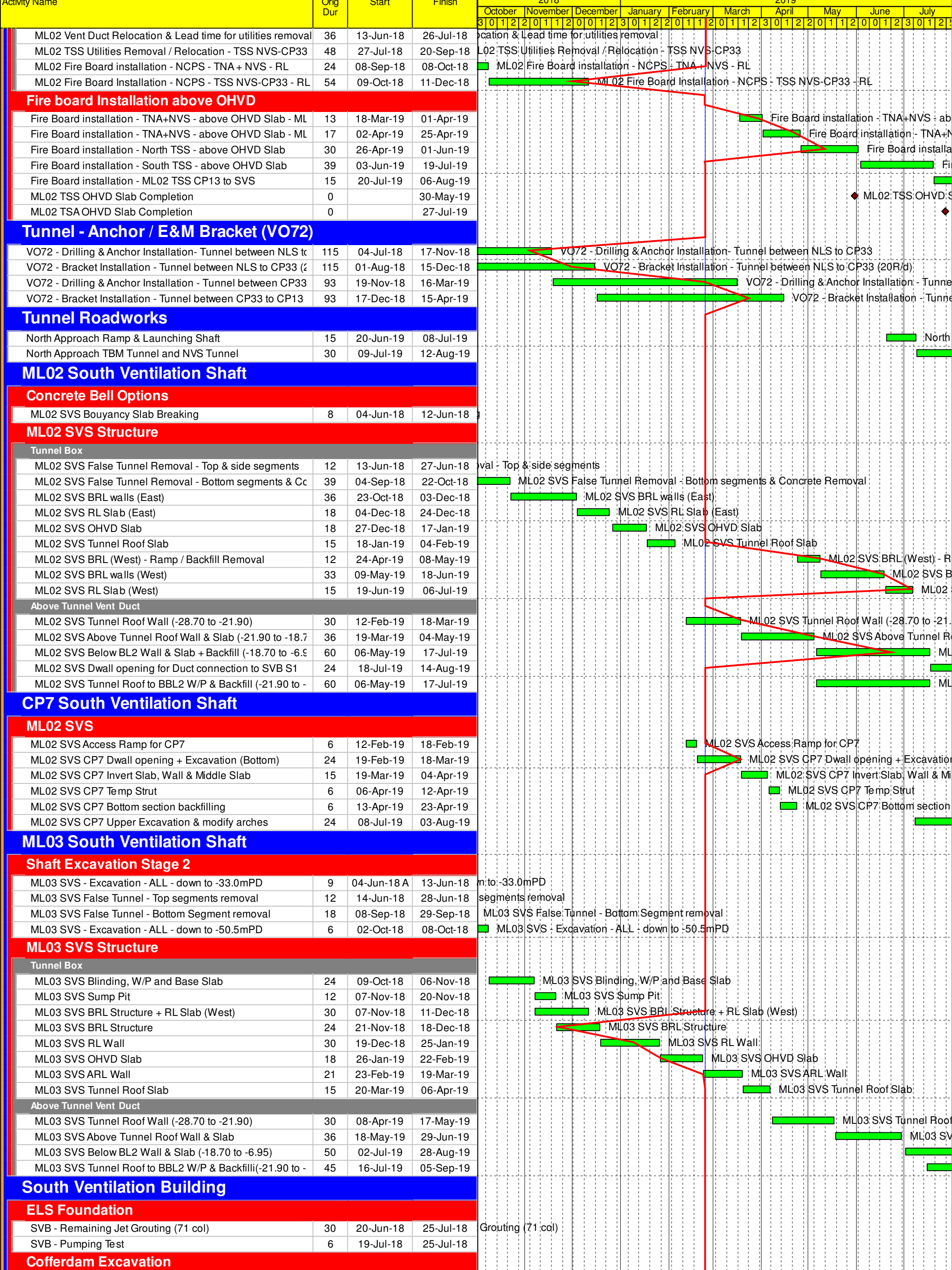
North Ventilation Building			
North Vent Bldg - Roof Steel Structure	48	04-Jun-18	31-Jul-18

North Launching Shaft

NLS Cell 1 False Tunnel			
ML03			
Cell 1 - Alimak Removal	15	06-Jun-18	23-Jun-18
NLS Cell 1-3 Structure for Cell 3 Dwall opening			
Cell 3			
Cell 3 - Removal of existing NLS Ramp	18	04-Jun-18	25-Jun-18
Cell 3 - Dwall extension	35	26-Jun-18	06-Aug-18
Cell 3 - Remaining Base Slab	18	07-Aug-18	27-Aug-18
Cell 3 - Middle Wall	24	28-Aug-18	24-Sep-18
Cell 3 - Top Slab	18	26-Sep-18	18-Oct-18
Cell 3 - Base Slab - Connecting to NAR	18	28-Aug-18	17-Sep-18
Cell 3 - Wall 17 & 18	24	18-Sep-18	18-Oct-18
Cell 2			
Cell 2 - Removal of remaining NLS Ramp	12	04-Jun-18	16-Jun-18
Cell 2 - Expose Coupler for W6 & 7	12	19-Jun-18	03-Jul-18
Cell 2 - Wall 6 & 7	24	04-Jul-18	31-Jul-18
Cell 2 - ML03 - Prepare Scaffolding for Top Beams	18	01-Aug-18	21-Aug-18



Activity Name	Orig Dur	Start	Finish	2018												2019																						
				October			November			December			January			February			March			April			May			June			July							
				3	0	1	2	2	0	1	1	2	0	0	1	2	3	0	1	2	2	0	1	1	2	3	0	1	2	2	0	1	1	2	0	0	1	2
Cell 2 - ML03 Top Beams	24	22-Aug-18	18-Sep-18	Cell 2 - ML03 Top Beams																																		
Cell 2 - ML02 - Prepare Scaffolding for Top beams	18	22-Aug-18	11-Sep-18	Cell 2 - ML02 - Prepare Scaffolding for Top beams																																		
Cell 2 - ML02 - Top Beams	24	19-Sep-18	19-Oct-18	Cell 2 - ML02 - Top Beams																																		
NIS Backfill to +3.0mPD for Cell 3 Dwall opening	24	19-Oct-18	15-Nov-18	NIS Backfill to +3.0mPD for Cell 3 Dwall opening																																		
NLS Cell 1-3 Remaining Structure																																						
Availability of NAR Access to Tunnel	0		06-May-19	Availability of NAR Access to Tunnel																																		
Cell 1 & 2 Top Slab Closing	24	22-May-19	19-Jun-19	Cell 1 & 2 Top Slab Closing																																		
ML02																																						
ML02 Cell 1 & 2 Preparation for BRL structure	24	20-Oct-18	16-Nov-18	ML02 Cell 1 & 2 Preparation for BRL structure																																		
ML02 Cell 1 & 2 BRL Structure	48	17-Nov-18	15-Jan-19	ML02 Cell 1 & 2 BRL Structure																																		
ML02 Cell 1 & 2 OHVD Slab	24	16-Jan-19	19-Feb-19	ML02 Cell 1 & 2 OHVD Slab																																		
ML03																																						
ML03 Cell 1 & 2 Preparation for BRL structure	24	16-Jan-19	19-Feb-19	ML03 Cell 1 & 2 Preparation for BRL structure																																		
ML03 Cell 1 & 2 BRL Structure	48	20-Feb-19	17-Apr-19	ML03 Cell 1 & 2 BRL Structure																																		
NLS W6 & W7 - Wall opening - closing	24	03-Apr-19	06-May-19	NLS W6 & W7 - Wall opening - closing																																		
ML03 Cell 1 & 2 OHVD Slab	24	18-Apr-19	21-May-19	ML03 Cell 1 & 2 OHVD Slab																																		
North - Phase 2 Reclamation																																						
[KD-5] Section 1A2 Completion - Portion N1 to N4 completion	0		04-Jun-18*	[KD-5] Section 1A2 Completion - Portion N1 to N4 completion																																		
NLF Demobilization & At-grade works																																						
[KD-7a] Stage 4 Completion - FSDB/CEDB Provide Access	0		15-Sep-18*	[KD-7a] Stage 4 Completion - FSDB/CEDB Provide Access																																		
[KD-7] Section 1C Completion - Portion N7 Handover	0		29-Nov-18*	[KD-7] Section 1C Completion - Portion N7 Handover																																		
[KD-4] Section 1A1 Completion - N12 Reclamation & Seawall	0		11-Jan-19*	[KD-4] Section 1A1 Completion - N12 Reclamation & Seawall																																		
Portion N1 Handover	0		15-Sep-18*	Portion N1 Handover																																		
Portion N12 & Portion N6B																																						
Seawall Coping - final concreting	48	27-Sep-18	23-Nov-18	Seawall Coping - final concreting																																		
Portion N12 - Seawall Inspection & Remedial works (if any)	39	24-Nov-18	11-Jan-19	Portion N12 - Seawall Inspection & Remedial works (if any)																																		
CLP Substation - Prepare for CLP Consent for de-energiza	96	01-Jun-19	24-Sep-19	CLP Substation - Prepare for CLP Consent for de-energiza																																		
Portion N1 - Remaining Compaction works & Clearance for	88	04-Jun-18	15-Sep-18	Portion N1 - Remaining Compaction works & Clearance for																																		
Drainages & Watermain - Portion N12 & N6B	144	17-Jan-19	19-Jul-19	Drainages & Watermain - Portion N12 & N6B																																		
Provision for Utilities - Portion N12 & N6B	72	23-May-19	16-Aug-19	Provision for Utilities - Portion N12 & N6B																																		
North Launching Shaft																																						
NLS Gantry Crane removal	48	06-May-19	03-Jul-19	NLS Gantry Crane removal																																		
Drainages & Watermain - NLS	194	21-Feb-19	17-Oct-19	Drainages & Watermain - NLS																																		
Provision for Utilities - NLS	96	23-Jul-19	14-Nov-19	Provision for Utilities - NLS																																		
Sloping Seawall																																						
Workshop & Amenities - Removal	48	26-Mar-19	27-May-19	Workshop & Amenities - Removal																																		
Drainages & Watermain - Workshop & Amenities	96	09-May-19	31-Aug-19	Drainages & Watermain - Workshop & Amenities																																		
Precast Segment Yard																																						
Gantry Crane 4 - Dismantling	36	28-Aug-18	10-Oct-18	Gantry Crane 4 - Dismantling																																		
Gantry Crane 4 Area - Ground slab removal	17	11-Oct-18	31-Oct-18	Gantry Crane 4 Area - Ground slab removal																																		
Drainages & Watermain - Zone C Roundabout	144	01-Nov-18	03-May-19	Drainages & Watermain - Zone C Roundabout																																		
Provision for Utilities - Zone C Roundabout	72	04-Mar-19	01-Jun-19	Provision for Utilities - Zone C Roundabout																																		
Utilities parties coordination & Remaining Civil Provision - Z	180	03-Jun-19	07-Jan-20	Utilities parties coordination & Remaining Civil Provision - Z																																		
NVS & STP (Portion N7 Interface)																																						
FSD / C&ED Building - Footprint - site clearance	29	14-Aug-18	15-Sep-18	FSD / C&ED Building - Footprint - site clearance																																		
STP Barging Point Removal	24	14-Aug-18	10-Sep-18	STP Barging Point Removal																																		
N7 - Type A, Filter & Seawall (Coping, Landing Steps, Cat L	48	11-Sep-18	08-Nov-18	N7 - Type A, Filter & Seawall (Coping, Landing Steps, Cat L																																		
N7 - Drainage Catch pit, U-channel	36	26-Sep-18	08-Nov-18	N7 - Drainage Catch pit, U-channel																																		
Portion N7 - Preparation for Handover	18	09-Nov-18	29-Nov-18	Portion N7 - Preparation for Handover																																		
STP Area - Surcharge Removal	72	12-Jul-18	05-Oct-18	STP Area - Surcharge Removal																																		
FSDB/CEDB ELS system - Removal from Portion X (by C4)	0	15-Apr-19*		FSDB/CEDB ELS system - Removal from Portion X (by C4)																																		
Branch drains & Watermain Terminal Manholes - FSDB/CEI	72	15-Apr-19	15-Jul-19	Branch drains & Watermain Terminal Manholes - FSDB/CEI																																		
FSDB/CEDB Terminal Manholes	48	16-Jul-19	09-Sep-19	FSDB/CEDB Terminal Manholes																																		
Drainages & Watermain - NVS / STP	144	30-Nov-18	03-Jun-19	Drainages & Watermain - NVS / STP																																		
Provision for Utilities - NVS / STP	72	04-Jun-19	28-Aug-19	Provision for Utilities - NVS / STP																																		
Tunnel - Thermal Barrier																																						
[KD-2a] Stage 2a Completion - TNA & TSS up to CP33	0		15-Dec-18*	[KD-2a] Stage 2a Completion - TNA & TSS up to CP33																																		
[KD-2b] Stage 2b Completion - TSS between CP33 to CP13	0		15-Apr-19*	[KD-2b] Stage 2b Completion - TSS between CP33 to CP13																																		
[KD-3e] Stage 3e Completion - NVS Tunnel	0		15-Dec-18*	[KD-3e] Stage 3e Completion - NVS Tunnel																																		
Fire board Installation below OHVD																																						
Fire Board between CP33 and CP13																																						
ML03 Fire Board Installation - CPS - TSS CP33-CP15 - RL	60	14-Jun-18	24-Aug-18	ML03 Fire Board Installation - CPS - TSS CP33-CP15 - RL																																		
ML03 TSS Utilities Removal / Relocation - TSS CP33-CP15	48	22-Sep-18	20-Nov-18	ML03 TSS Utilities Removal / Relocation - TSS CP33-CP15																																		
ML03 Fire Board Installation - NPS - TSS CP33-CP13 - RL	68	08-Dec-18	07-Mar-19	ML03 Fire Board Installation - NPS - TSS CP33-CP13 - RL																																		
ML03 Fire Board Installation - CPS - TSS CP15-CP13 - RL	8	08-Mar-19	16-Mar-19	ML03 Fire Board Installation - CPS - TSS CP15-CP13 - RL																																		
ML02 Fire Board Installation - CPS - TSS CP33-CP15 - RL	65	23-Jun-18	07-Sep-18	ML02 Fire Board Installation - CPS - TSS CP33-CP15 - RL																																		
ML02 TSS Utilities Removal / Relocation - TSS CP33-CP15	48	21-Sep-18	19-Nov-18	ML02 TSS Utilities Removal / Relocation - TSS CP33-CP15																																		
ML02 Fire Board Installation - NPS - TSS CP33-CP13 - RL	68	12-Dec-18	11-Mar-19	ML02 Fire Board Installation - NPS - TSS CP33-CP13 - RL																																		
ML02 Fire Board Installation - CPS - TSS CP15-CP13 - RL	3	12-Mar-19	14-Mar-19	ML02 Fire Board Installation - CPS - TSS CP15-CP13 - RL																																		
Fire board between NLS and CP33																																						
ML03 SVS False Tunnel Dismantling (Top part)	0	14-Jun-18		ML03 SVS False Tunnel Dismantling (Top part)																																		
ML02 SVS False Tunnel Dismantling (Top part)	0	13-Jun-18		ML02 SVS False Tunnel Dismantling (Top part)																																		
ML03 Vent Duct Relocation & Lead time for utilities removal	36	14-Jun-18	27-Jul-18	ML03 Vent Duct Relocation & Lead time for utilities removal																																		
ML03 Fire Board installation - NCPS - TNA + NVS - RL	33	25-Aug-18	04-Oct-18	ML03 Fire Board installation - NCPS - TNA + NVS - RL																																		
ML03 TSS Utilities Removal / Relocation - TSS NVS-CP33	48	28-Jul-18	21-Sep-18	ML03 TSS Utilities Removal / Relocation - TSS NVS-CP33																																		
ML03 Fire Board Installation - NCPS - TSS NVS-CP33 - RL	54	05-Oct-18	07-Dec-18	ML03 Fire Board Installation - NCPS - TSS NVS-CP33 - RL																																		



Activity Name	Orig Dur	Start	Finish	2018												2019															
				October		November		December		January		February		March		April		May		June		July									
				3	0	1	2	2	0	1	1	2	0	0	1	2	3	0	1	2	2	0	1	1	2	3	0	1	2	3	0
SVB ELS - Excavation down to -1.0mPD - SVS side	6	12-Jul-18	18-Jul-18	down to -1.0mPD - SVS side																											
SVB ELS - Concrete Waler & Strut at SVS side	15	19-Jul-18	04-Aug-18	ete Waler & Strut at SVS side																											
SVB ELS - Excavation down to -1.0mPD - remaining	12	02-Aug-18	15-Aug-18	cavation down to -1.0mPD - remaining																											
SVB ELS - S2 Strut & Waling - Installation	16	09-Aug-18	27-Aug-18	- S2 Strut & Waling - Installation																											
SVB ELS - S2 Strut & Waling - preloading	0	28-Aug-18	28-Aug-18	- S2 Strut & Waling - preloading																											
SVB ELS - Excavation down to -6.0mPD - 21,000 m3	18	17-Aug-18	06-Sep-18	LS - Excavation down to -6.0mPD - 21,000 m3																											
SVB ELS - S3 Strut & Waling - Installation	16	30-Aug-18	17-Sep-18	B ELS - S3 Strut & Waling - Installation																											
SVB ELS - S3 Strut & Waling - preloading	0	18-Sep-18	18-Sep-18	B ELS - S3 Strut & Waling - preloading																											
SVB ELS - Excavation down to -10.0mPD - 17,000 m3	15	11-Sep-18	28-Sep-18	SVB ELS - Excavation down to -10.0mPD - 17,000 m3																											

Structure

SVB - Base Slab	30	18-Sep-18	25-Oct-18
SVB - W/P & Backfilling for S3 removal	18	11-Oct-18	01-Nov-18
SVB - S3 Strut Removal	12	02-Nov-18	15-Nov-18
SVB - BL2 External Wall + Precast + BL1 slab	24	09-Nov-18	06-Dec-18
SVB - W/P & Backfilling for S2 removal	18	23-Nov-18	13-Dec-18
SVB - S2 Strut Removal	12	14-Dec-18	29-Dec-18
SVB - BL1 External Wall - Stage 1	24	21-Dec-18	21-Jan-19
SVB - W/P & Backfilling for S1 removal	18	08-Jan-19	28-Jan-19
SVB - S1 Strut Removal	12	29-Jan-19	18-Feb-19
SVB - BL1 External Wall - Stage 2 & Precast + GL Slab	24	12-Feb-19	11-Mar-19
SVB - GL Wall + 1F Slab	24	12-Mar-19	09-Apr-19
SVB - 1F Wall + 2F Slab	24	26-Mar-19	26-Apr-19
SVB - 2F Wall + RF Slab	24	10-Apr-19	11-May-19

ABWF

SVB - BL2 ABWF	40	21-Dec-18	15-Feb-19
SVB - BL1 ABWF	24	26-Mar-19	26-Apr-19
SVB - GF ABWF	24	27-Apr-19	27-May-19
SVB - 1F ABWF	24	14-May-19	11-Jun-19
SVB - 2F ABWF	24	28-May-19	25-Jun-19
SVB - Remaining ABWF	21	26-Jun-19	20-Jul-19
SVB - Roof Structure	60	22-Jul-19	30-Sep-19
SVB - Provide Access for BL2 Lower Plenum Rooms	0		15-Feb-19
SVB - Provide Access for BL1 Upper Attenuator Rooms	0		26-Apr-19
SVB - Provide Access for GF	0		27-May-19
SVB - Provide Access for 1F	0		11-Jun-19
SVB - Provide Access for Upper Plenum Rooms	0		25-Jun-19
KD-10a - SVB Structure Completion & Provide Access to BL2	0		11-May-19*
KD-10 - SVB Completion & Provide Access	0		20-Jul-19*

South Approach TBM Tunnel

S881 TBM

S881 TBM - G3 & G4 - Pulling, Cutting & removal	36	28-Jul-18	07-Sep-18
S881 TBM Final Break-out	14	26-Mar-19	08-Apr-19
S881 Cutterhead / Main Shield / Main Drive - Cut & remove	36	09-Apr-19	25-May-19
Cell 1 ML02 - Shifting way for Gantry 1 & 2 Removal	12	27-May-19	10-Jun-19
S881 TBM G1 & G2 Removal	24	11-Jun-19	09-Jul-19

S882 TBM

S882 TBM - G3 & G4 - Pulling, Cutting & removal	36	24-Jul-18	03-Sep-18
TBMs Final Break out at Caterpillar Cell 1	0	12-Mar-19	
S882 TBM Final Break-out	14	12-Mar-19	25-Mar-19
S882 Cutterhead / Main Shield / Main Drive - Cut & remove	36	26-Mar-19	11-May-19
Cell 1 ML02 - Shifting way for Gantry 1 & 2 Removal	12	14-May-19	27-May-19
S882 TBM G1 & G2 Removal	24	28-May-19	25-Jun-19

ML02 TSS Internal Structure

ML02 TSS Temp Gallery B Removal at SVS	6	28-Jun-18	05-Jul-18
S882 ISIG Removal from Sub-sea Tunnel	15	06-Jul-18	23-Jul-18
ML02 TSS - Remaining Corbel Structure by ISCG	13	06-May-19	21-May-19
ML02 TSS - Parapet installation	33	22-May-19	29-Jun-19
Walkway corbel - TSS Remaining & SVS ML02 both side	26	02-Jul-19	31-Jul-19
ML02 TSS - OHVD by ISSG (from CP15 to SVS)	8	22-May-19	30-May-19

ML03 TSS Internal Structure

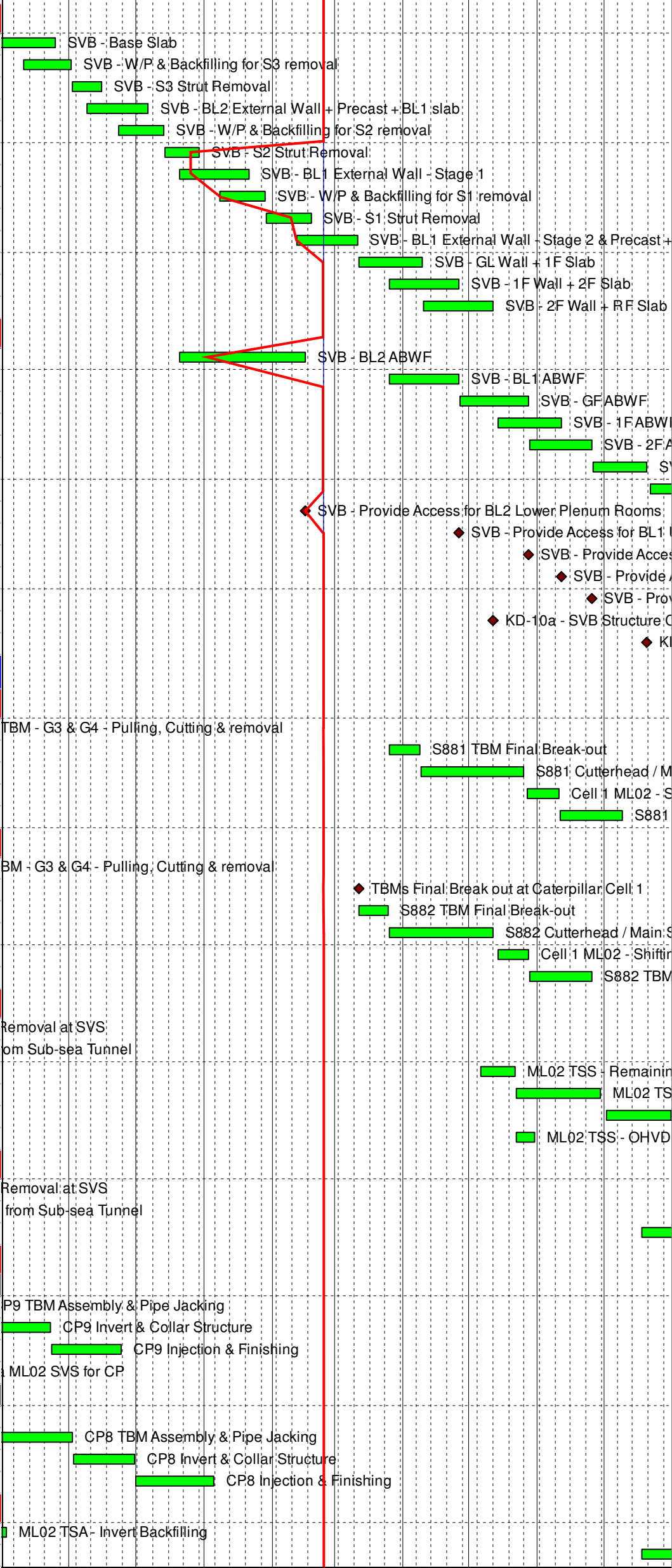
ML03 TSS Temp Gallery B Removal at SVS	6	29-Jun-18	06-Jul-18
ML03 ISIG Removal from Sub-sea Tunnel	18	07-Jul-18	27-Jul-18
ML03 TSS - Remaining Corbel Structure by ISCG	14	18-Jul-19	02-Aug-19

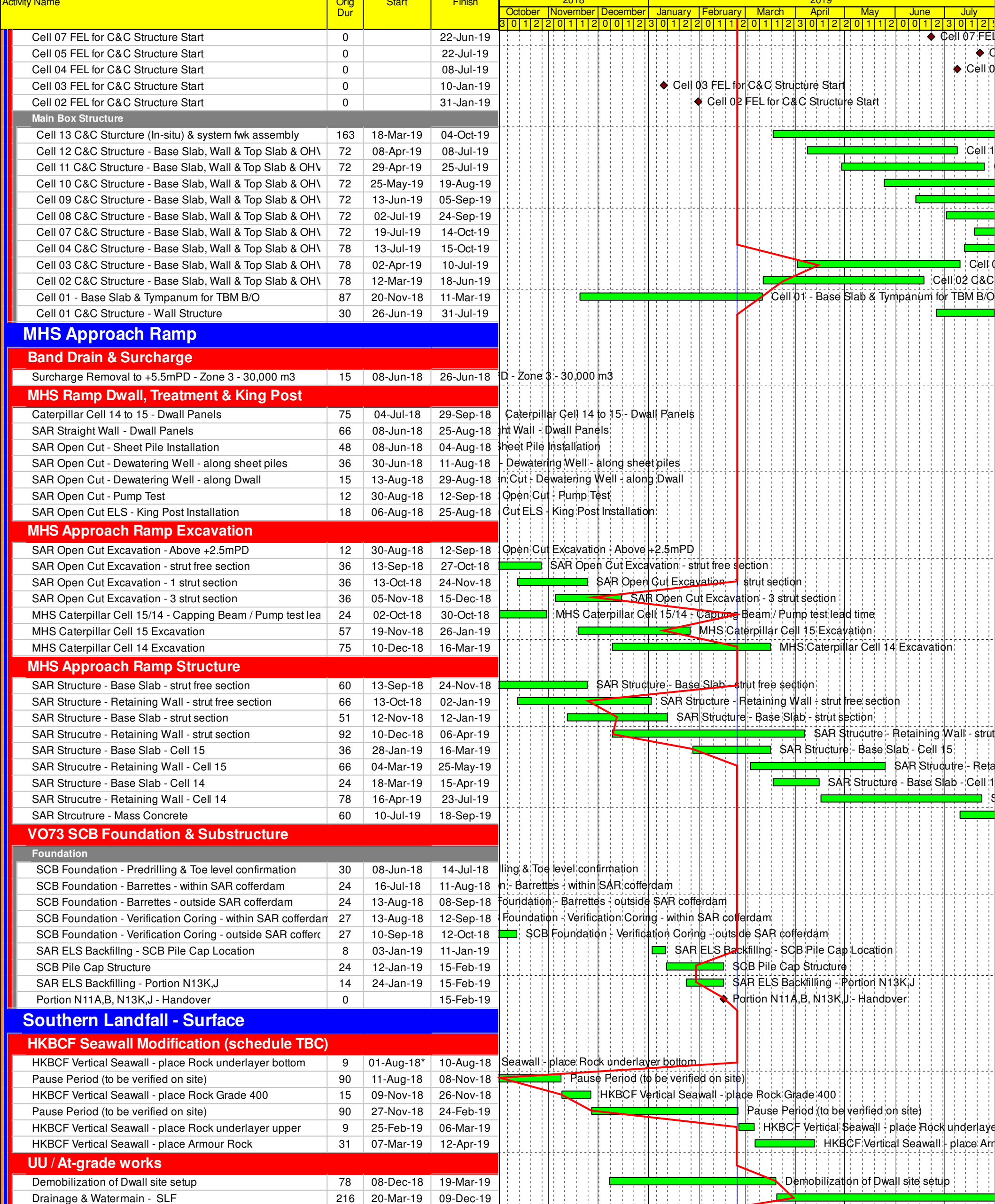
TSS Cross Passage

CP9			
CP9 TBM Assembly & Pipe Jacking	57	27-Jul-18	21-Sep-18
CP9 Invert & Collar Structure	24	22-Sep-18	23-Oct-18
CP9 Injection & Finishing	28	24-Oct-18	24-Nov-18
Slurry Pipe Setup via ML02 SVS for CP	24	28-Jun-18	26-Jul-18
CP8			
CP8 ML02 Tympanum	36	04-Jun-18	17-Jul-18
CP8 TBM Assembly & Pipe Jacking	42	22-Sep-18	02-Nov-18
CP8 Invert & Collar Structure	24	03-Nov-18	30-Nov-18
CP8 Injection & Finishing	28	01-Dec-18	05-Jan-19

ML02 TSA Internal Structure

ML02 TSA - Invert Backfilling	24	04-Sep-18	03-Oct-18
ML02 TSA - Parapet installation	15	18-Jul-19	03-Aug-19





Activity Name	Orig Dur	Start	Finish
Cell 07 FEL for C&C Structure Start	0	22-Jun-19	
Cell 05 FEL for C&C Structure Start	0	22-Jul-19	
Cell 04 FEL for C&C Structure Start	0	08-Jul-19	
Cell 03 FEL for C&C Structure Start	0	10-Jan-19	
Cell 02 FEL for C&C Structure Start	0	31-Jan-19	
Main Box Structure			
Cell 13 C&C Structure (In-situ) & system fwk assembly	163	18-Mar-19	04-Oct-19
Cell 12 C&C Structure - Base Slab, Wall & Top Slab & OH\	72	08-Apr-19	08-Jul-19
Cell 11 C&C Structure - Base Slab, Wall & Top Slab & OH\	72	29-Apr-19	25-Jul-19
Cell 10 C&C Structure - Base Slab, Wall & Top Slab & OH\	72	25-May-19	19-Aug-19
Cell 09 C&C Structure - Base Slab, Wall & Top Slab & OH\	72	13-Jun-19	05-Sep-19
Cell 08 C&C Structure - Base Slab, Wall & Top Slab & OH\	72	02-Jul-19	24-Sep-19
Cell 07 C&C Structure - Base Slab, Wall & Top Slab & OH\	72	19-Jul-19	14-Oct-19
Cell 04 C&C Structure - Base Slab, Wall & Top Slab & OH\	78	13-Jul-19	15-Oct-19
Cell 03 C&C Structure - Base Slab, Wall & Top Slab & OH\	78	02-Apr-19	10-Jul-19
Cell 02 C&C Structure - Base Slab, Wall & Top Slab & OH\	78	12-Mar-19	18-Jun-19
Cell 01 - Base Slab & Tympanum for TBM B/O	87	20-Nov-18	11-Mar-19
Cell 01 C&C Structure - Wall Structure	30	26-Jun-19	31-Jul-19