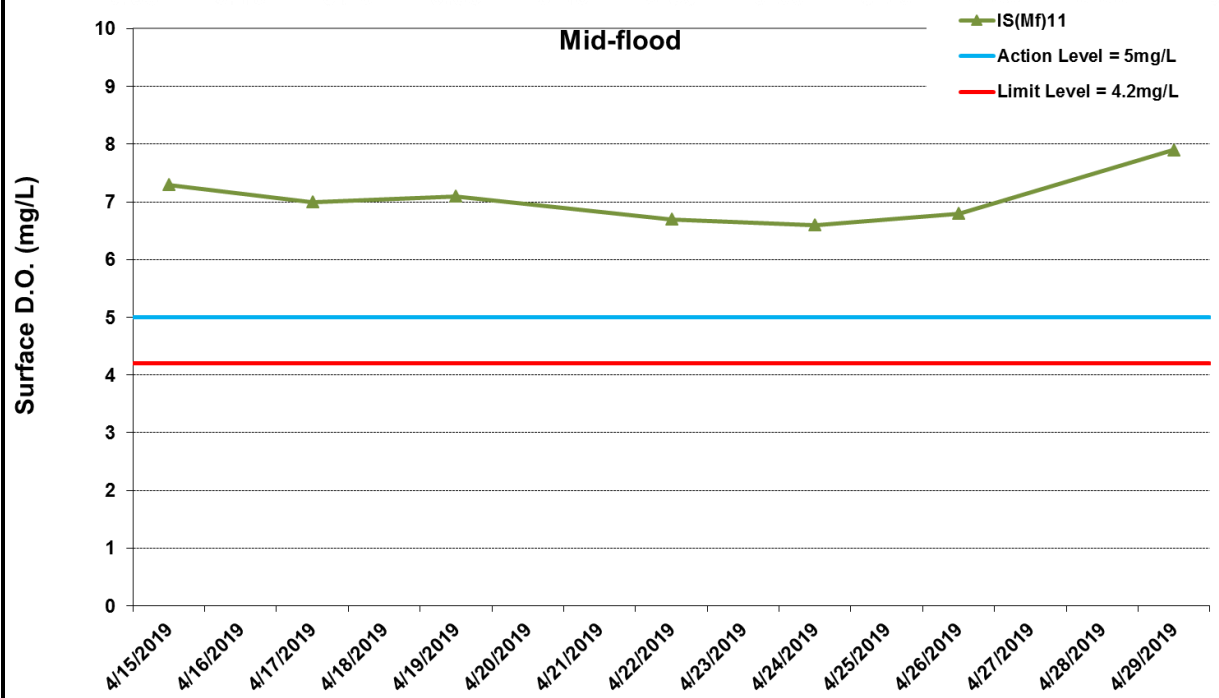
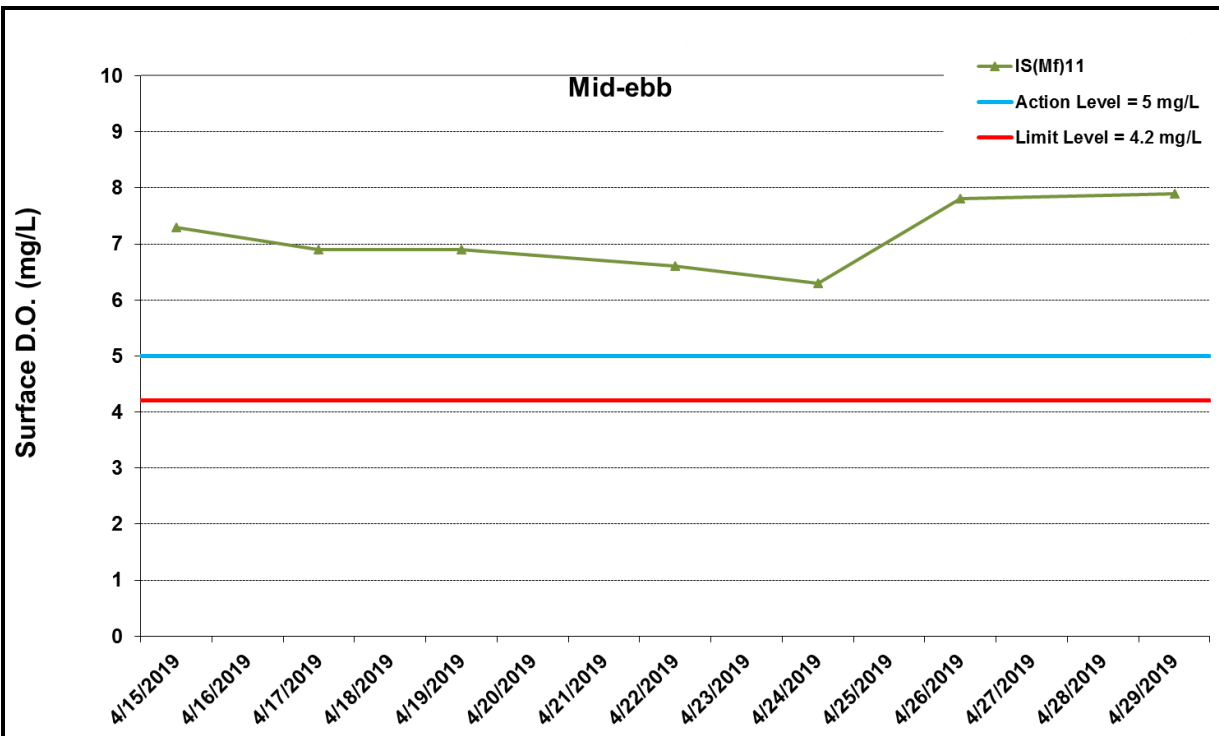


Appendix J

## Impact Water Quality Monitoring Results

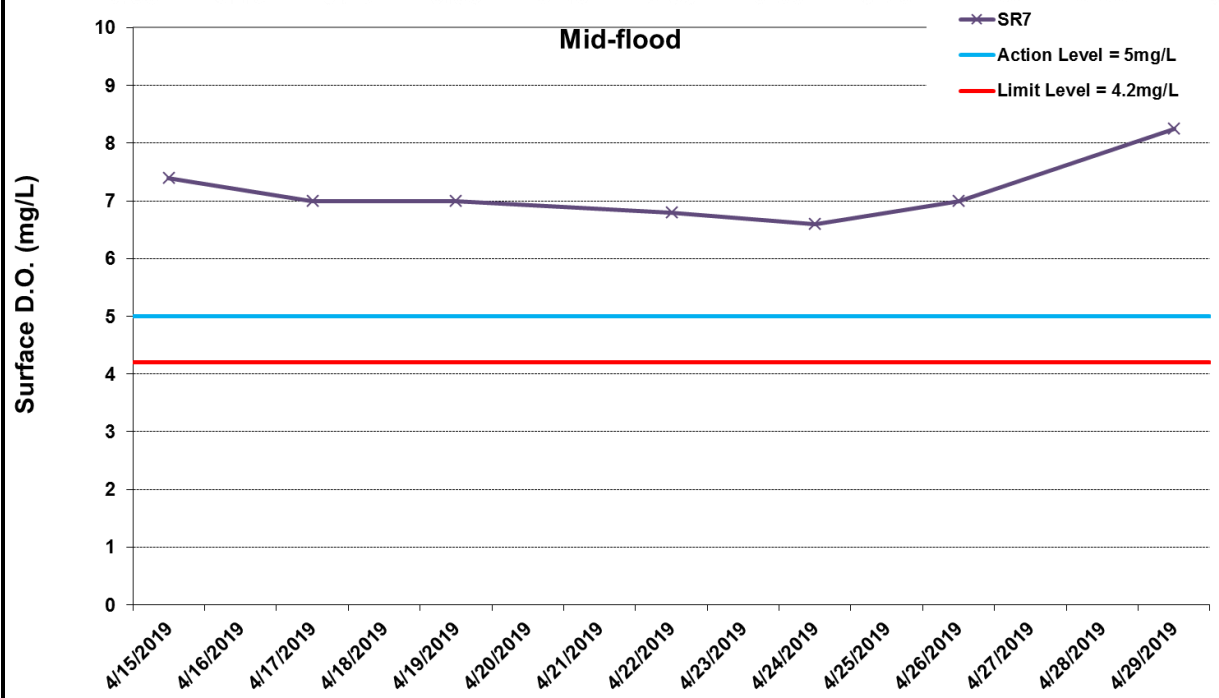
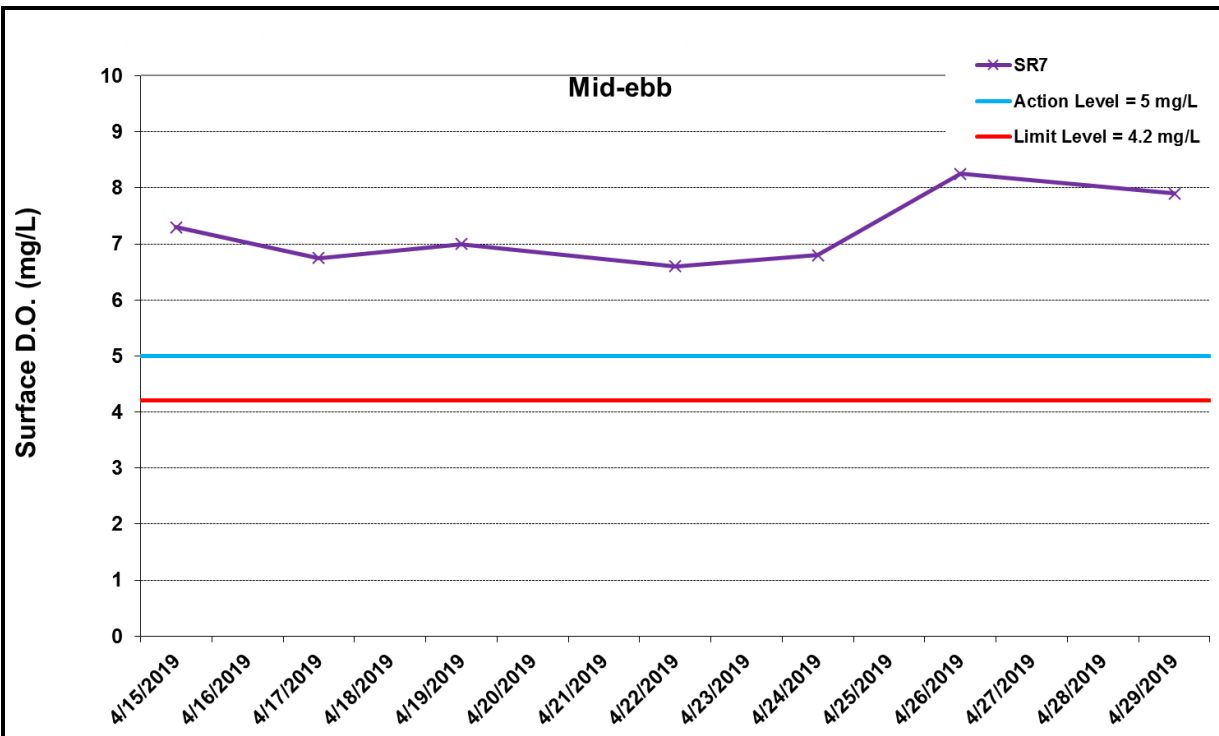


\* The AL/LL for WQM stations, IS(Mf)11, IS17 and SR7, are adopted from HZMB HKBCF project.

**Figure J1 Impact Monitoring - Mean Level of Dissolved Oxygen (mg/L) in surface waters between 15 April 2019 and 30 April 2019 at IS(Mf)11. The weather conditions during the monitoring period varied mostly from sunny to cloudy. Major marine works included: Seawall Modification works at Southern Landfall (15/4/2019 - 30/4/2019).**



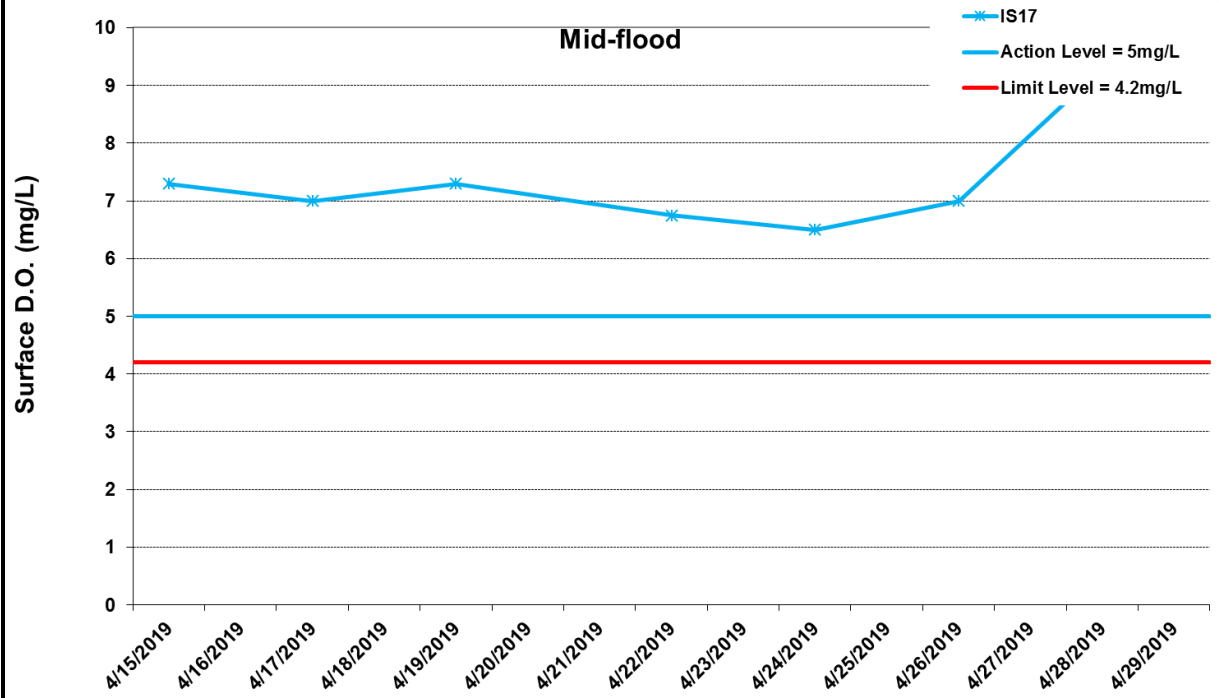
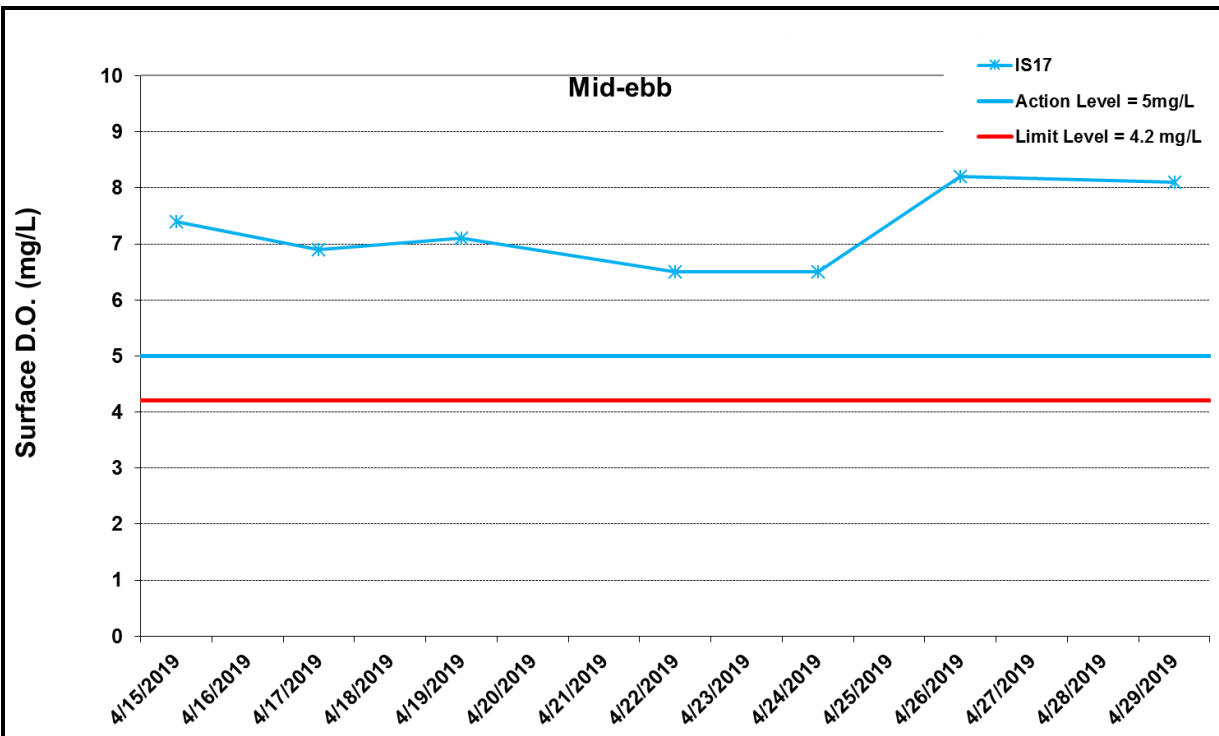
Ref: 0212330\_Impact-WQM\_April2019\_graphs\_Rev a.xls



\* The AL/LL for WQM stations, IS(Mf)11, IS17 and SR7, are adopted from HZMB HKBCF project.

Figure J2 Impact Monitoring - Mean Level of Dissolved Oxygen (mg/L) in surface waters between 15 April 2019 and 30 April 2019 at SR7. The weather conditions during the monitoring period varied mostly from sunny to cloudy. Major marine works included: Seawall Modification works at Southern Landfall (15/4/2019 - 30/4/2019).



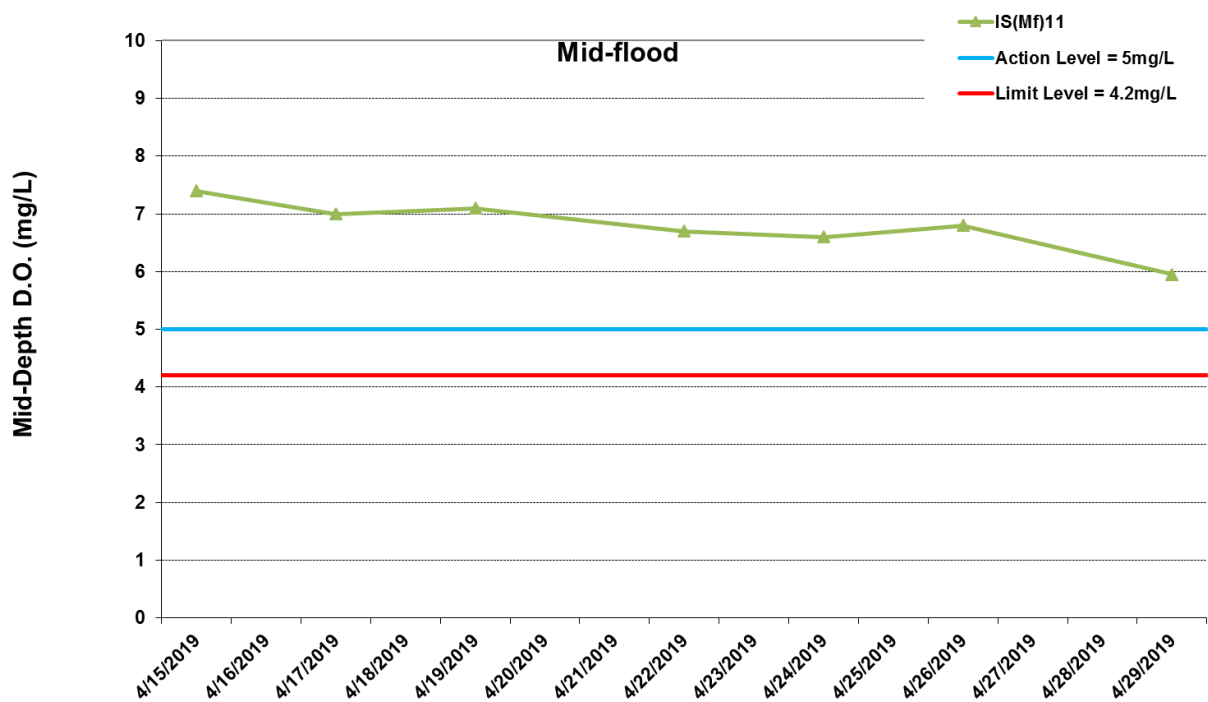
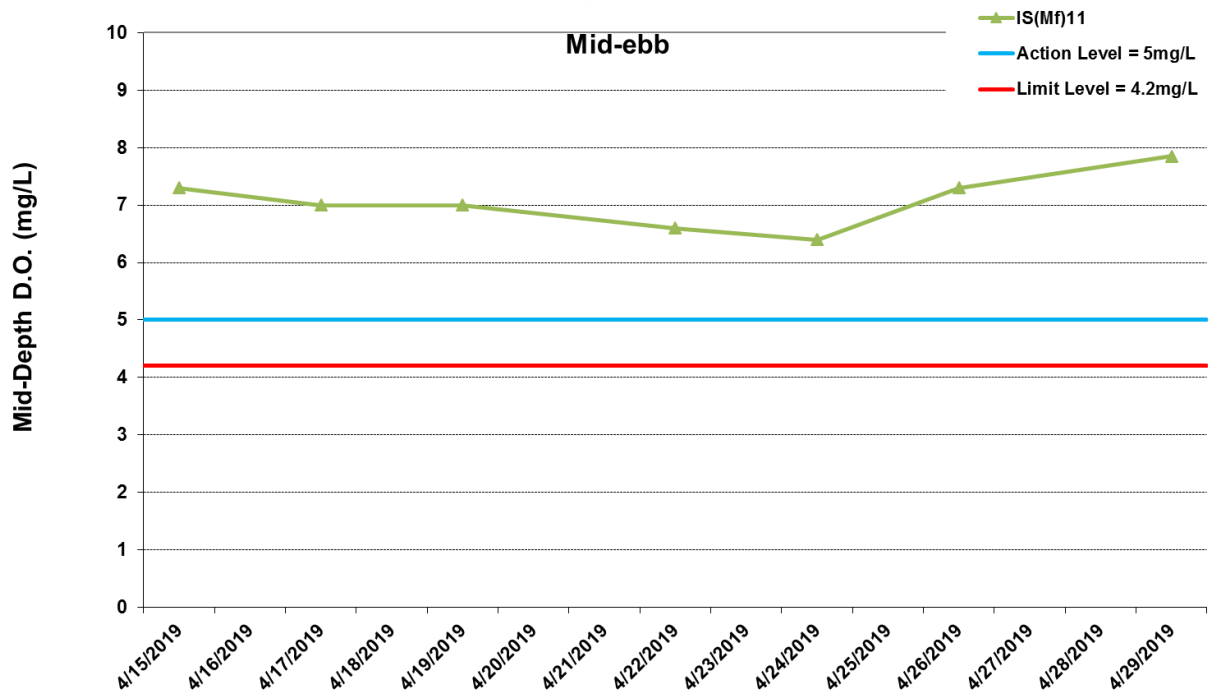


\* The AL/LL for WQM stations, IS(Mf)11, IS17 and SR7, are adopted from HZMB HKBCF project.

**Figure J3 Impact Monitoring - Mean Level of Dissolved Oxygen (mg/L) in surface waters between 15 April 2019 and 30 April 2019 at IS17. The weather conditions during the monitoring period varied mostly from sunny to cloudy. Major marine works included: Seawall Modification works at Southern Landfall (15/4/2019 - 30/4/2019).**



Ref: 0212330\_Impact-WQM\_April2019\_graphs\_Rev a.xls

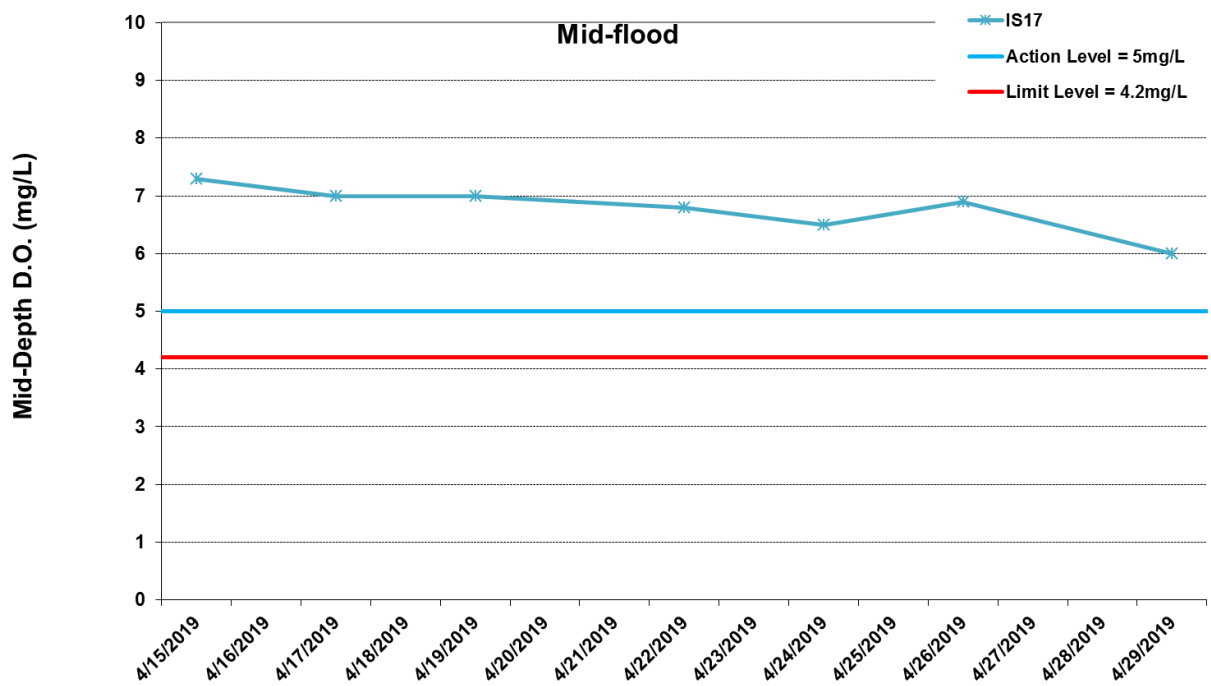
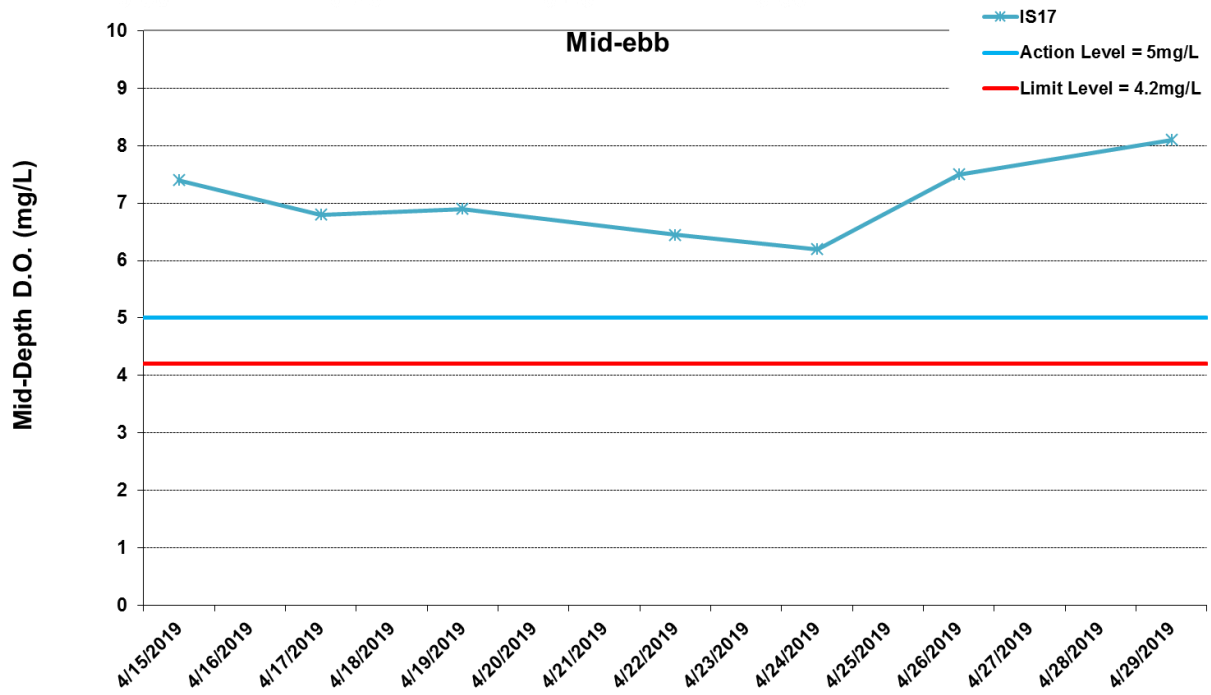


\* The AL/LL for WQM stations, IS(Mf)11, IS17 and SR7, are adopted from HZMB HKBCF project.

\*No data for Stations SR7 due to shallow water depth (< 6m).

**Figure J4 Impact Monitoring - Mean Level of Dissolved Oxygen (mg/L) in mid-depth waters between 15 April 2019 and 30 April 2019 at IS(Mf)11. The weather conditions during the monitoring period varied mostly from sunny to cloudy. Major marine works included: Seawall Modification works at Southern Landfall (15/4/2019 - 30/4/2019).**



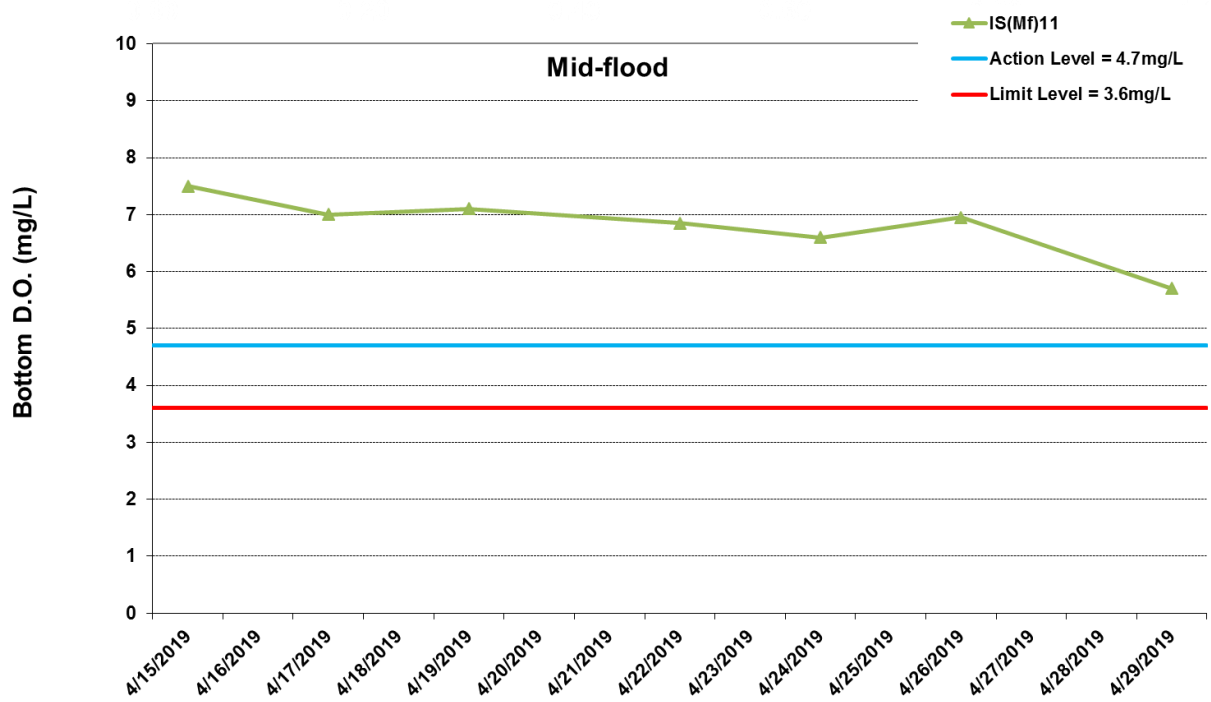
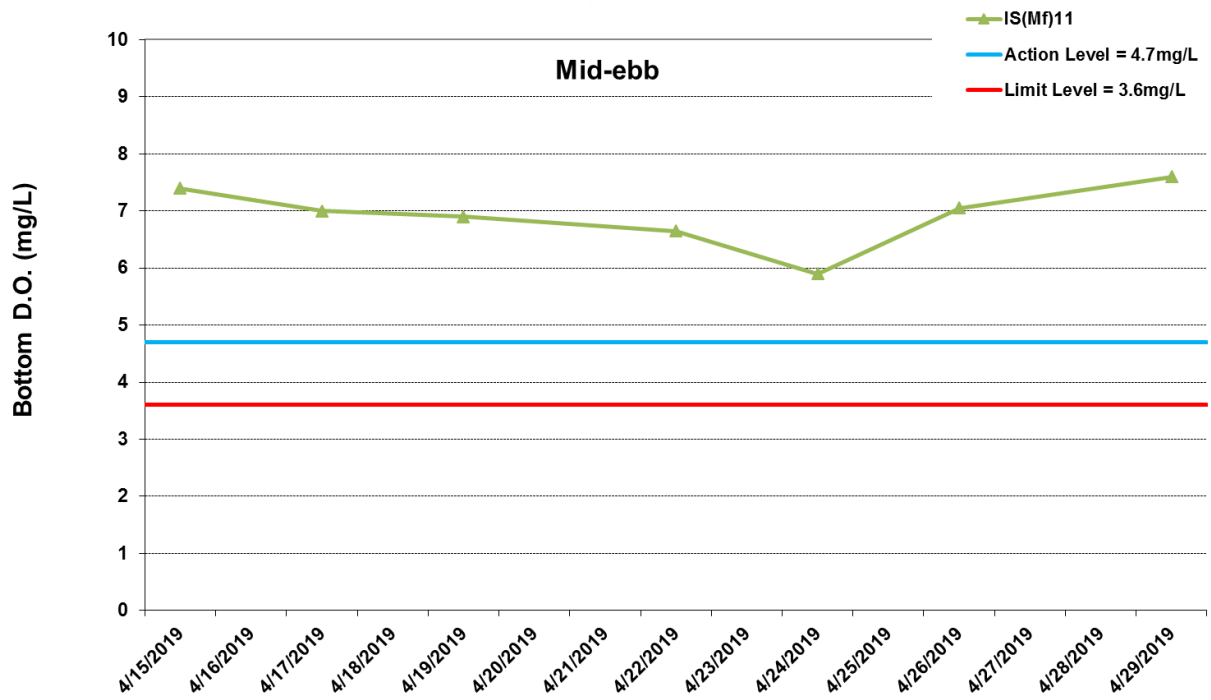


\* The AL/LL for WQM stations, IS(Mf)11, IS17 and SR7, are adopted from HZMB HKBCF project.

\*No data for Stations SR7 due to shallow water depth (< 6m).

**Figure J5 Impact Monitoring - Mean Level of Dissolved Oxygen (mg/L) in mid-depth waters between 15 April 2019 and 30 April 2019 at IS17. The weather conditions during the monitoring period varied mostly from sunny to cloudy. Major marine works included: Seawall Modification works at Southern Landfall (15/4/2019 - 30/4/2019).**

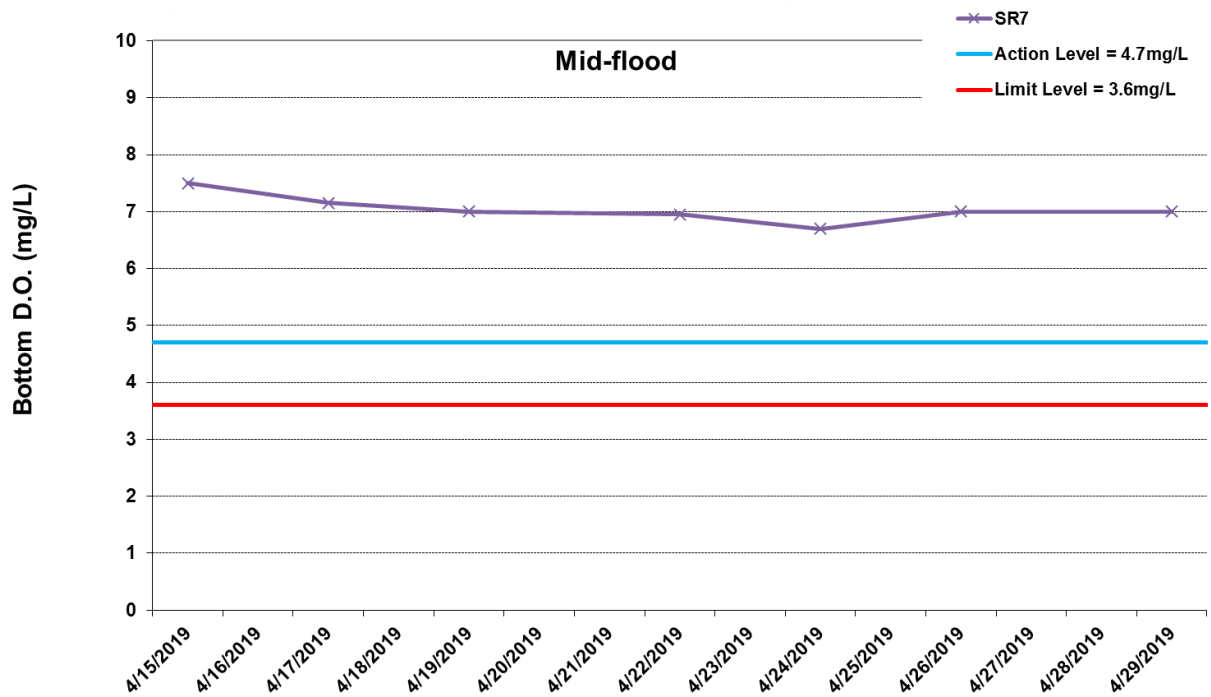
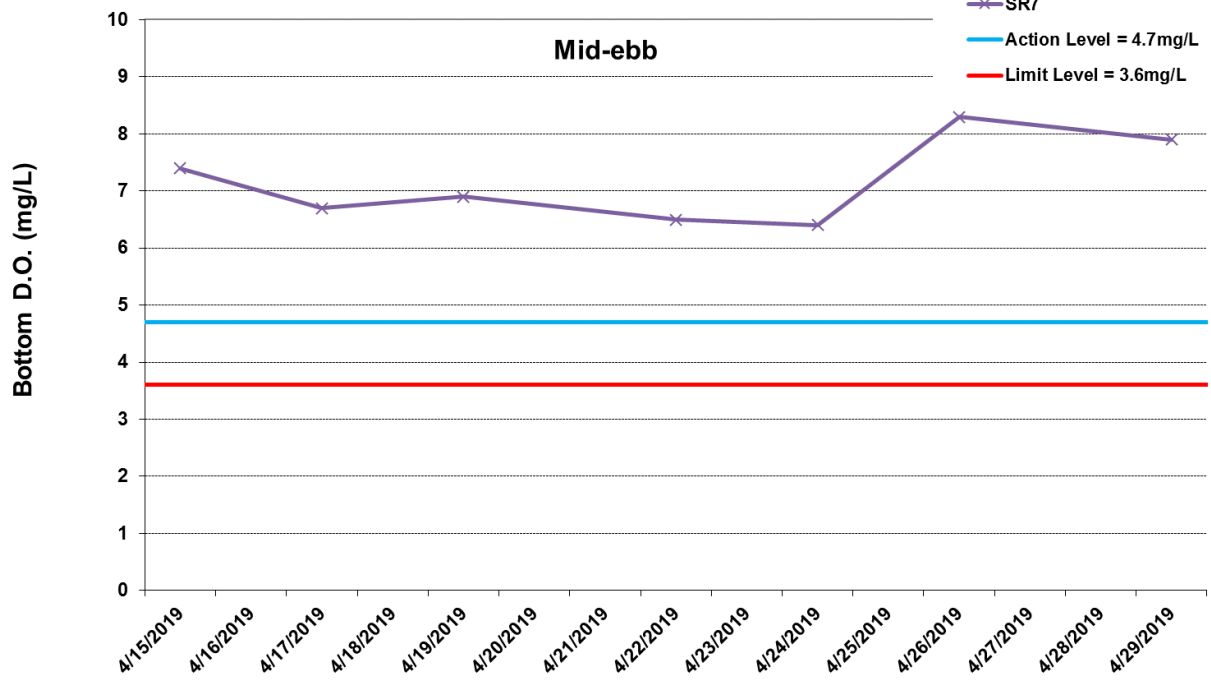




\* The AL/LL for WQM stations, IS(Mf)11, IS17 and SR7, are adopted from HZMB HKBCF project.

**Figure J6 Impact Monitoring - Mean Level of Dissolved Oxygen (mg/L) in bottom water between 15 April 2019 and 30 April 2019 at IS(Mf)11. The weather conditions during the monitoring period varied mostly from sunny to cloudy. Major marine works included: Seawall Modification works at Southern Landfall (15/4/2019 - 30/4/2019).**





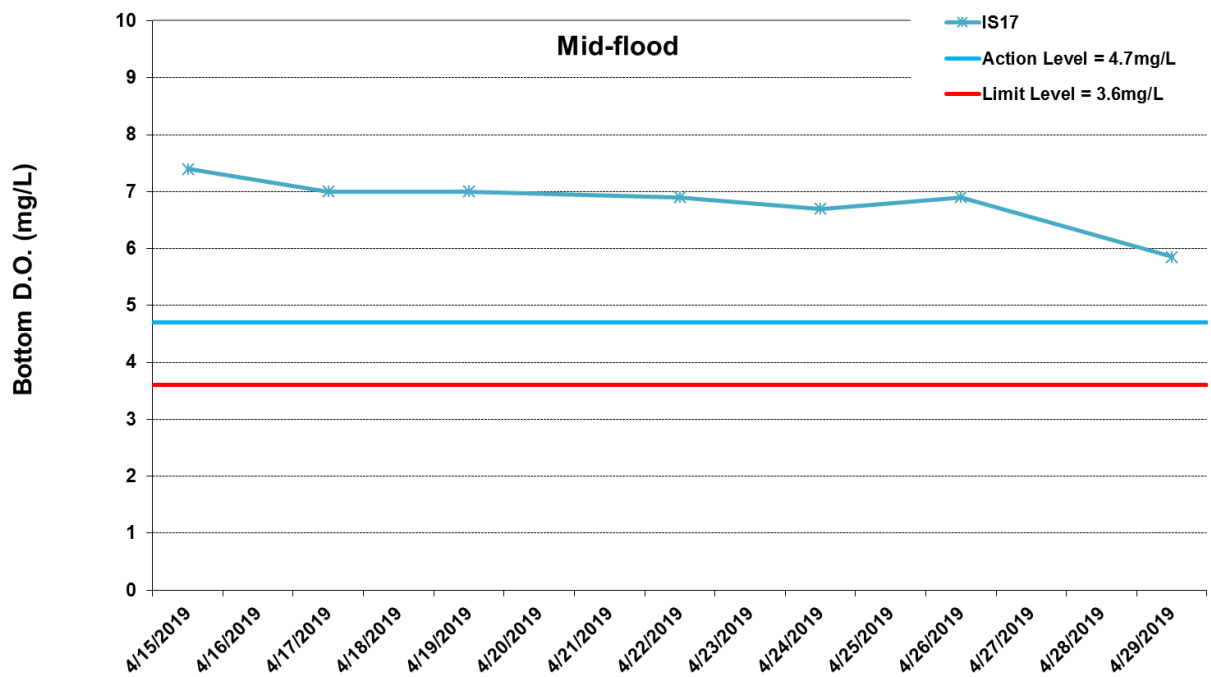
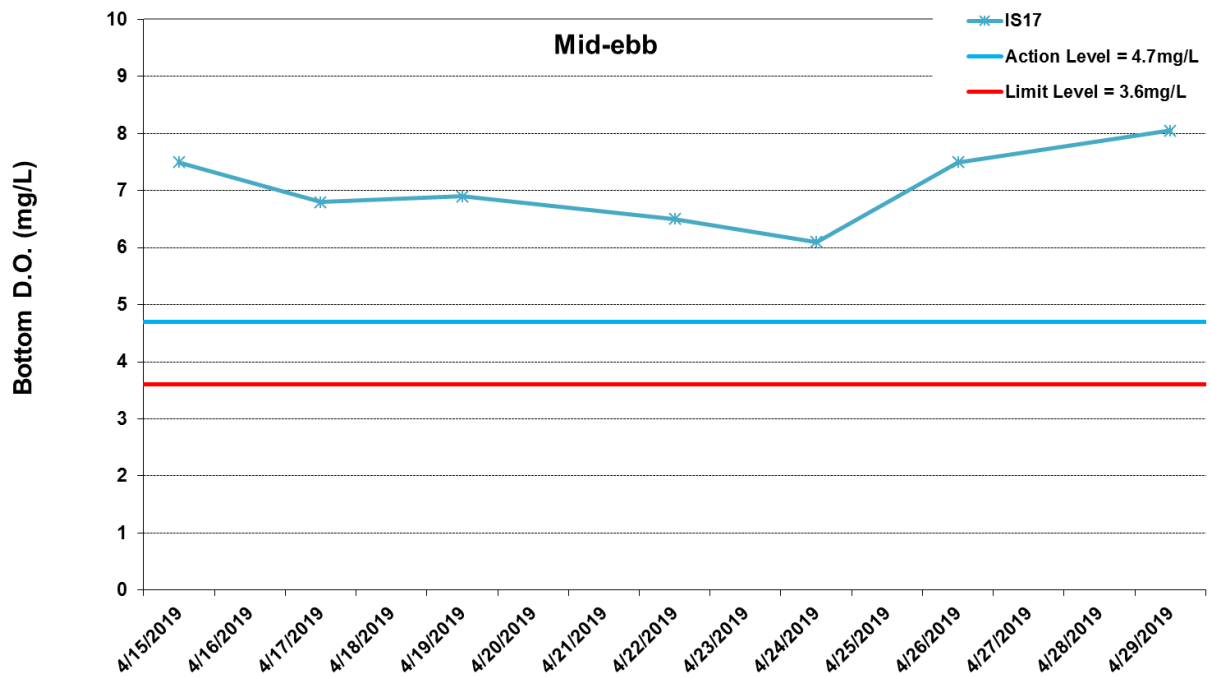
\* The AL/LL for WQM stations, IS(Mf)11, IS17 and SR7, are adopted from HZMB HKBCF project.

**Figure J7 Impact Monitoring - Mean Level of Dissolved Oxygen (mg/L) in bottom water between 15 April 2019 and 30 April 2019 at SR7. The weather conditions during the monitoring period varied mostly from sunny to cloudy. Major marine works included: Seawall Modification works at Southern Landfall (15/4/2019 - 30/4/2019).**



Ref: 0212330\_Impact-WQM\_April2019\_graphs\_Rev a.xls

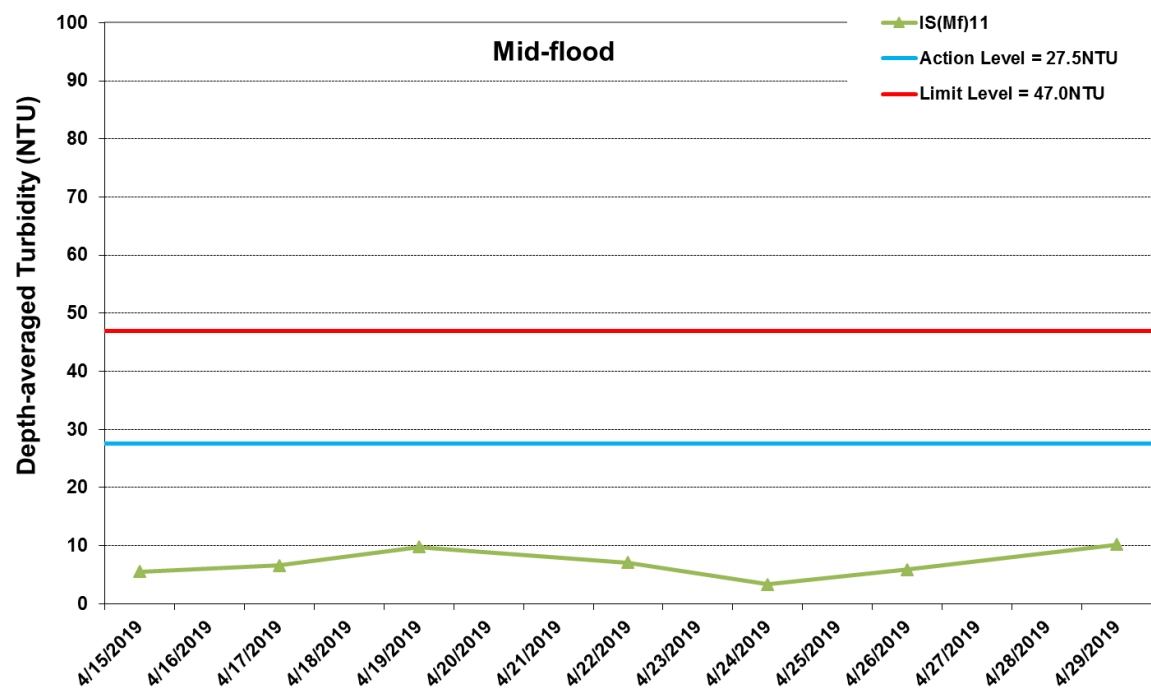
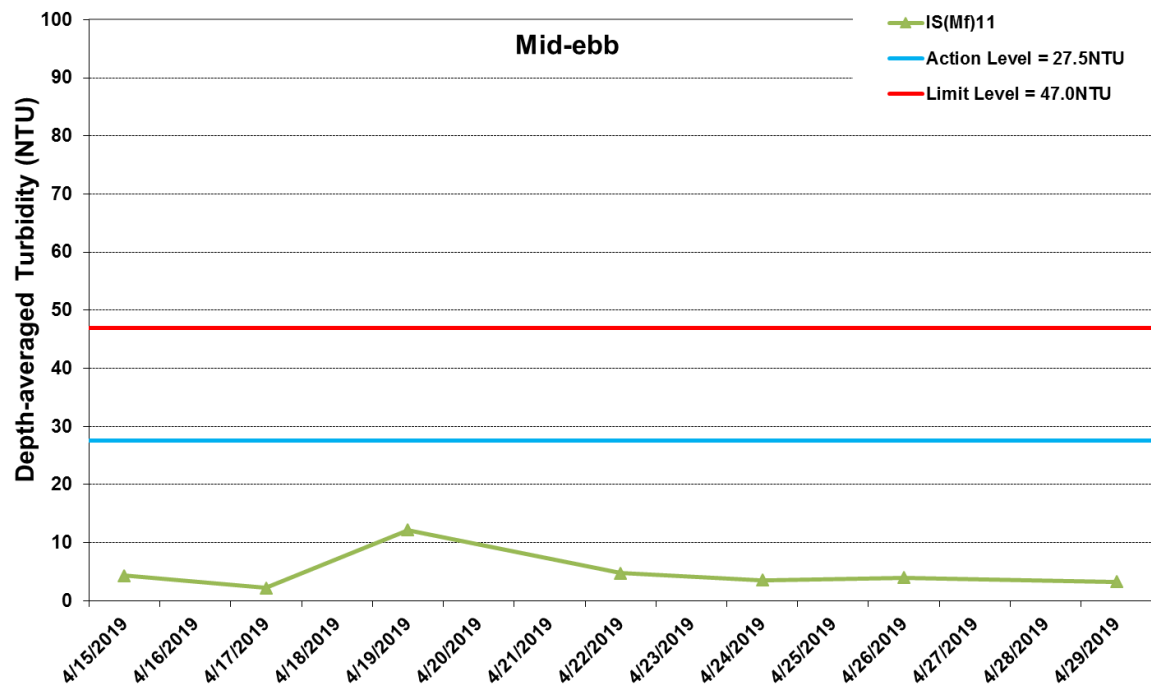




\* The AL/LL for WQM stations, IS(Mf)11, IS17 and SR7, are adopted from HZMB HKBCF project.

**Figure J8 Impact Monitoring - Mean Level of Dissolved Oxygen (mg/L) in bottom water between 15 April 2019 and 30 April 2019 at IS17. The weather conditions during the monitoring period varied mostly from sunny to cloudy. Major marine works included: Seawall Modification works at Southern Landfall (15/4/2019 - 30/4/2019).**

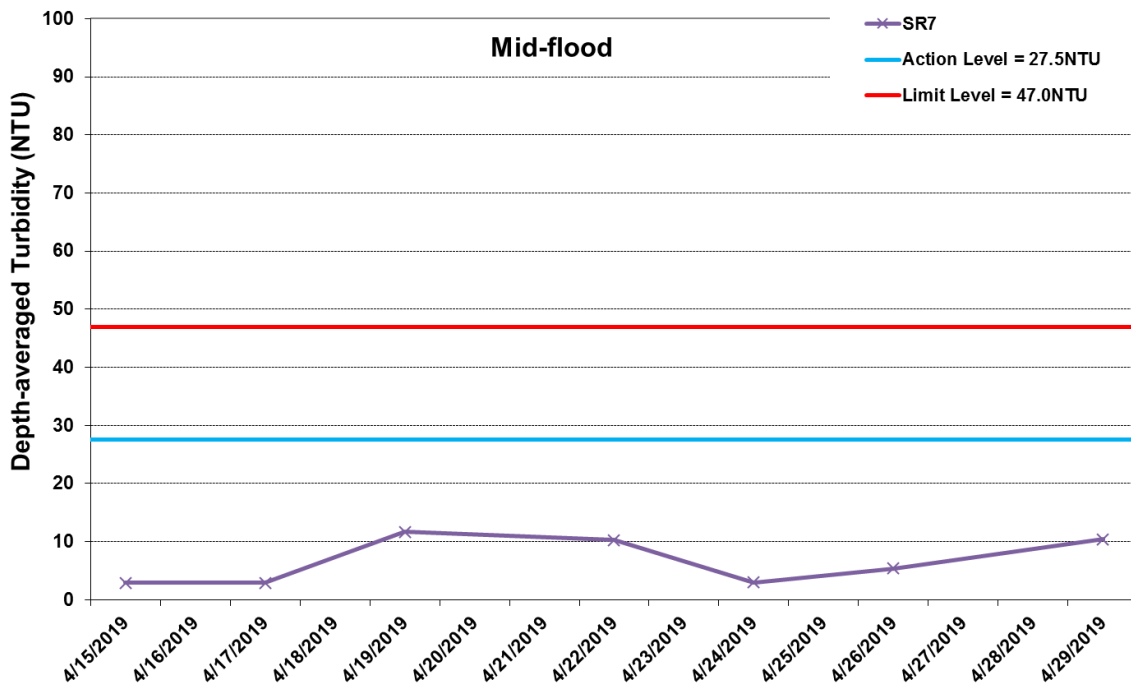
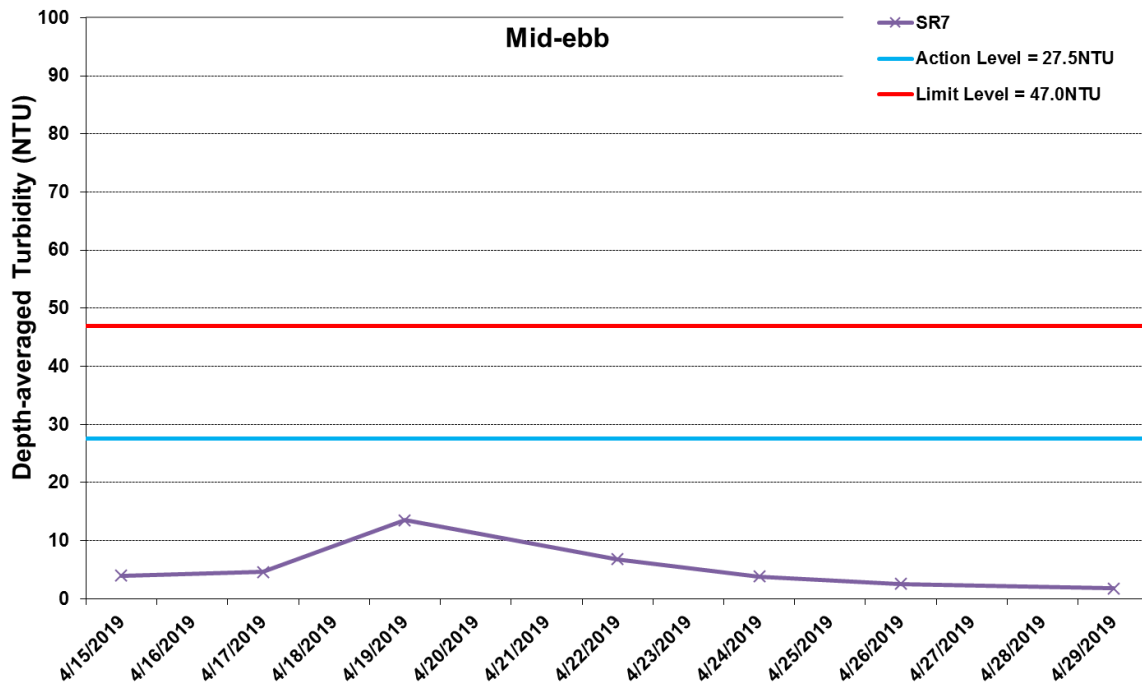




\* The AL/LL for WQM stations, IS(Mf)11, IS17 and SR7, are adopted from HZMB HKBCF project.

Figure J9 Impact Monitoring - Mean Depth-averaged Level of Turbidity (NTU) between 15 April 2019 and 30 April 2019 at IS(Mf)11. The weather conditions during the monitoring period varied mostly from sunny to cloudy. Major marine works included: Seawall Modification works at Southern Landfall (15/4/2019 - 30/4/2019).



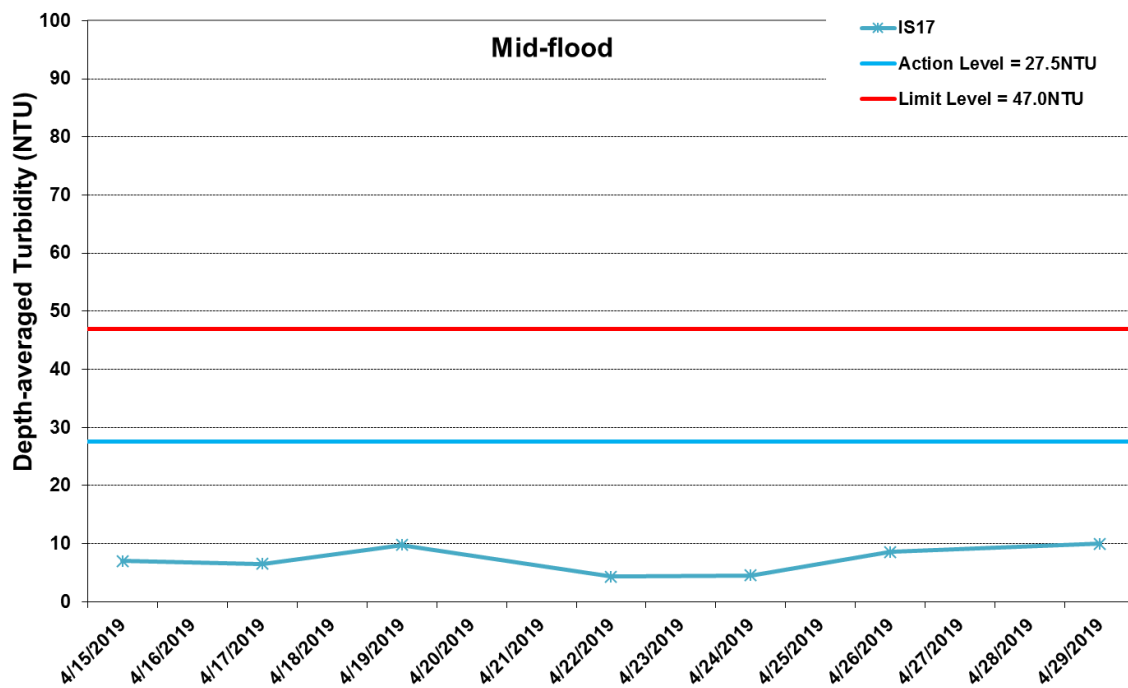
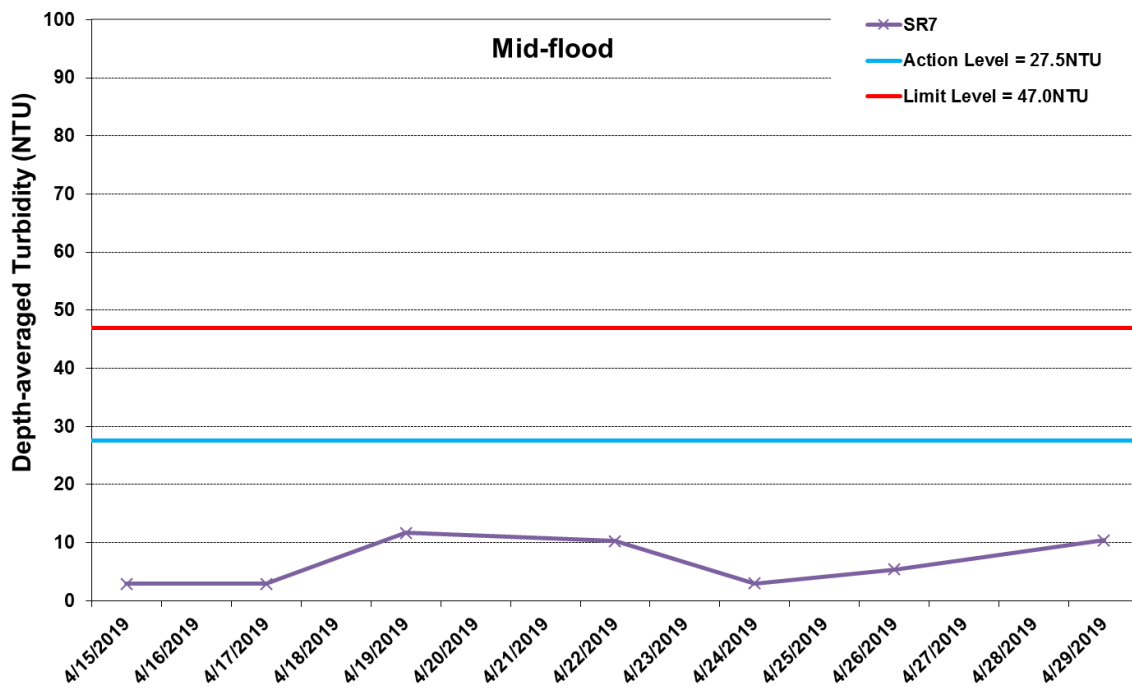


\* The AL/LL for WQM stations, IS(Mf)11, IS17 and SR7, are adopted from HZMB HKBCF project.

**Figure J10 Impact Monitoring - Mean Depth-averaged Level of Turbidity (NTU) between 15 April 2019 and 30 April 2019 at SR7. The weather conditions during the monitoring period varied mostly from sunny to cloudy. Major marine works included: Seawall Modification works at Southern Landfall (15/4/2019 - 30/4/2019).**

Ref: 0212330\_Impact-WQM\_April2019\_graphs\_Rev a.xls



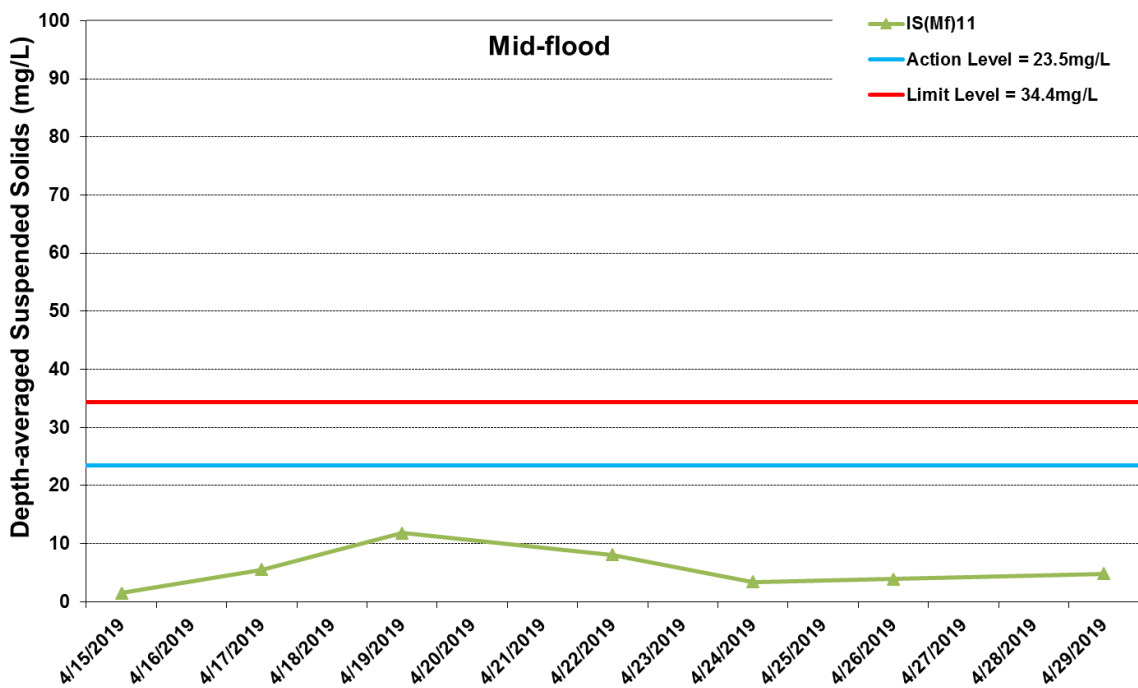
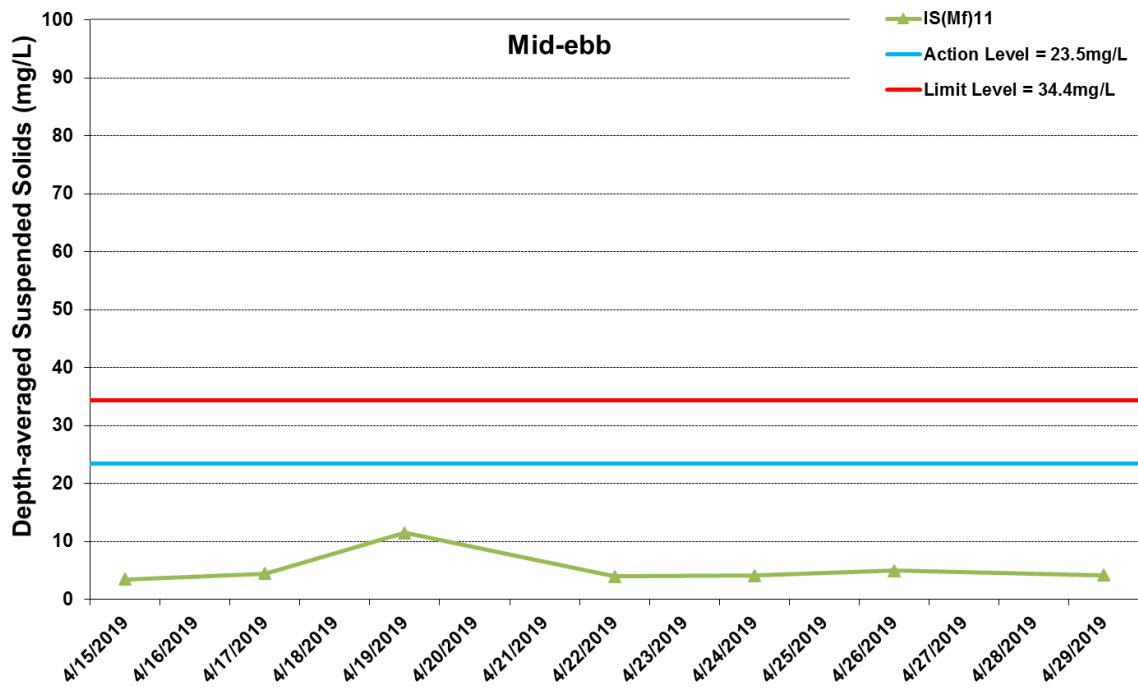


\* The AL/LL for WQM stations, IS(Mf)11, IS17 and SR7, are adopted from HZMB HKBCF project.

**Figure J11 Impact Monitoring - Mean Depth-averaged Level of Turbidity (NTU) between 15 April 2019 and 30 April 2019 at IS17. The weather conditions during the monitoring period varied mostly from sunny to cloudy. Major marine works included: Seawall Modification works at Southern Landfall (15/4/2019 - 30/4/2019).**

Ref: 0212330\_Impact-WQM\_April2019\_graphs\_Rev a.xls

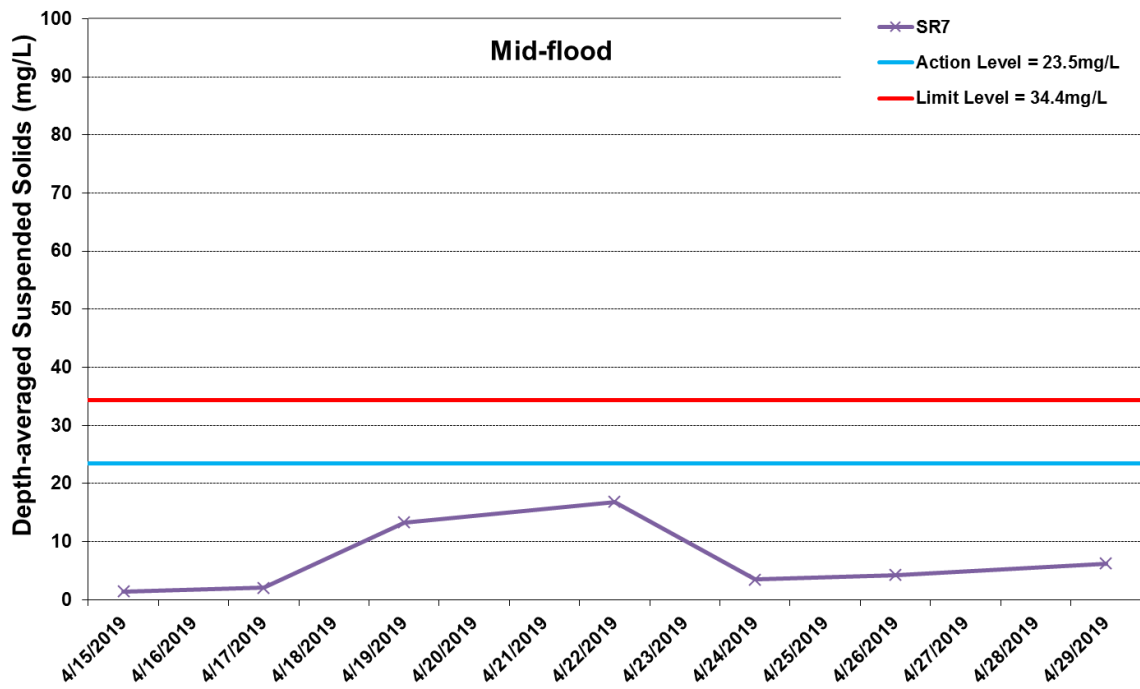
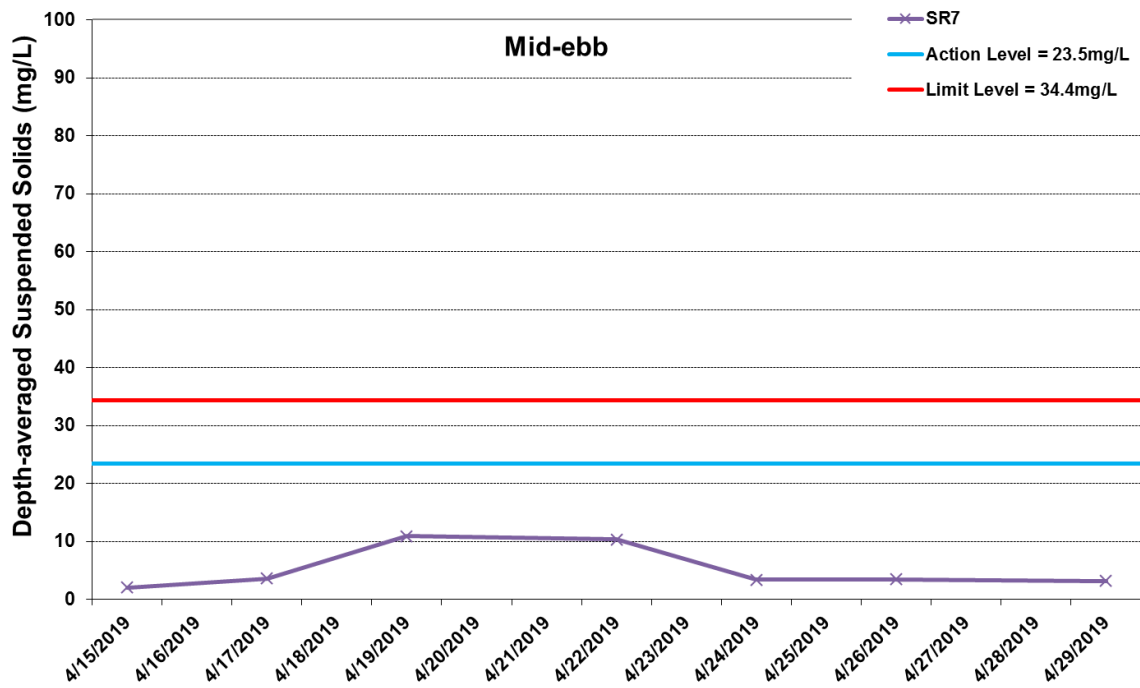




\* The AL/LL for WQM stations, IS(Mf)11, IS17 and SR7, are adopted from HZMB HKBCF project.

**Figure J12 Impact Monitoring - Mean Depth-averaged Level of Suspended Solids (mg/L) between 15 April 2019 and 30 April 2019 at IS(Mf)11. The weather conditions during the monitoring period varied mostly from sunny to cloudy. Major marine works included: Seawall Modification works at Southern Landfall (15/4/2019 - 30/4/2019).**

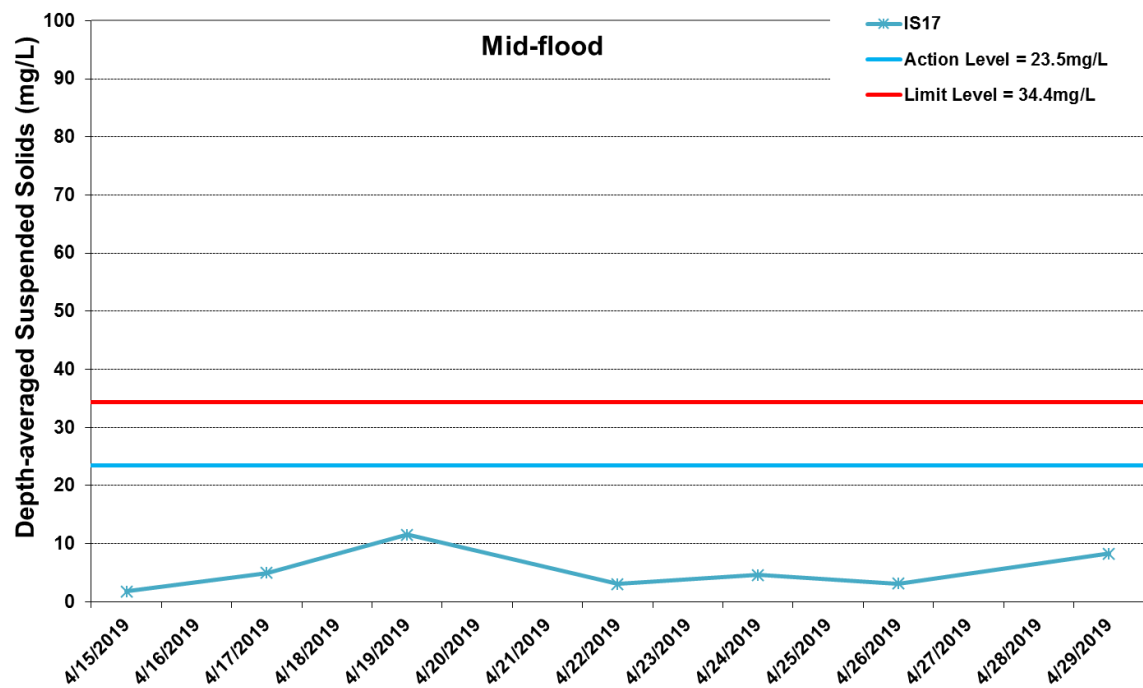
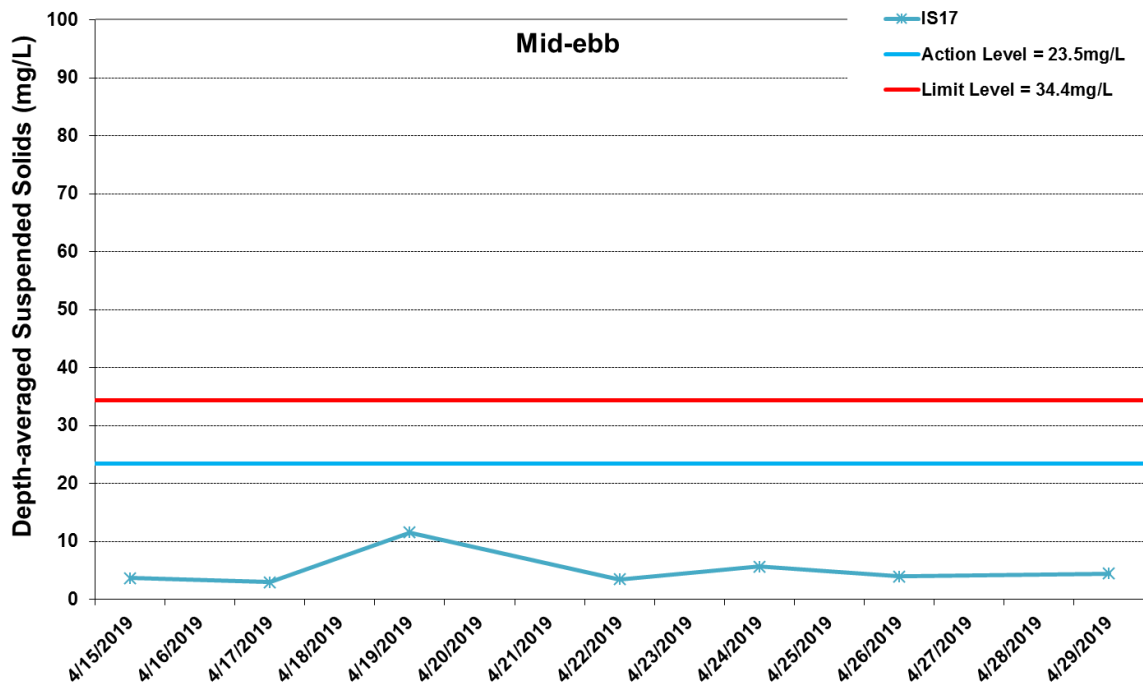




\* The AL/LL for WQM stations, IS(Mf)11, IS17 and SR7, are adopted from HZMB HKBCF project.

**Figure J13 Impact Monitoring - Mean Depth-averaged Level of Suspended Solids (mg/L) between 15 April 2019 and 30 April 2019 at SR7. The weather conditions during the monitoring period varied mostly from sunny to cloudy. Major marine works included: Seawall Modification works at Southern Landfall (15/4/2019 - 30/4/2019).**





\* The AL/LL for WQM stations, IS(Mf)11, IS17 and SR7, are adopted from HZMB HKBCF project.

**Figure J14 Impact Monitoring - Mean Depth-averaged Level of Suspended Solids (mg/L) between 15 April 2019 and 30 April 2019 at IS17. The weather conditions during the monitoring period varied mostly from sunny to cloudy. Major marine works included: Seawall Modification works at Southern Landfall (15/4/2019 - 30/4/2019).**



Ref: 0212330\_Impact-WQM\_April2019\_graphs\_Rev a.xls

Project	Works	Date	Tide	Stat	Weather	Sea Condition	Time	Water Depth	Level	Lev_Cod	Replicate	Temp(°C)	pH	Salinity(ppt)	DO(mg/L)	Turbidity(NTU)	SS(mg/L)
TMCLKL	HY/2012/08	2019-04-15	Mid-Ebb	IS(Mf)11	Cloudy	Moderate	11:04	11.3	Surface	1	1	23.4	8.4	22.8	7.3	5.5	3.4
TMCLKL	HY/2012/08	2019-04-15	Mid-Ebb	IS(Mf)11	Cloudy	Moderate	11:04	11.3	Surface	1	2	23.4	8.4	22.8	7.3	5.5	3.9
TMCLKL	HY/2012/08	2019-04-15	Mid-Ebb	IS(Mf)11	Cloudy	Moderate	11:04	11.3	Middle	2	1	23.4	8.4	23.3	7.3	4.2	3
TMCLKL	HY/2012/08	2019-04-15	Mid-Ebb	IS(Mf)11	Cloudy	Moderate	11:04	11.3	Middle	2	2	23.4	8.4	23.3	7.3	4.3	3.4
TMCLKL	HY/2012/08	2019-04-15	Mid-Ebb	IS(Mf)11	Cloudy	Moderate	11:04	11.3	Bottom	3	1	23.3	8.4	23.1	7.4	3.3	3.8
TMCLKL	HY/2012/08	2019-04-15	Mid-Ebb	IS(Mf)11	Cloudy	Moderate	11:04	11.3	Bottom	3	2	23.3	8.4	23.1	7.4	3.3	3.3
TMCLKL	HY/2012/08	2019-04-15	Mid-Ebb	SR7	Cloudy	Moderate	10:04	4.6	Surface	1	1	23.6	8.4	24	7.3	4.5	2.3
TMCLKL	HY/2012/08	2019-04-15	Mid-Ebb	SR7	Cloudy	Moderate	10:04	4.6	Surface	1	2	23.6	8.4	24	7.3	4.8	2.8
TMCLKL	HY/2012/08	2019-04-15	Mid-Ebb	SR7	Cloudy	Moderate	10:04	4.6	Middle	2	1						
TMCLKL	HY/2012/08	2019-04-15	Mid-Ebb	SR7	Cloudy	Moderate	10:04	4.6	Middle	2	2						
TMCLKL	HY/2012/08	2019-04-15	Mid-Ebb	SR7	Cloudy	Moderate	10:04	4.6	Bottom	3	1	23.6	8.4	24.1	7.4	3.3	1.3
TMCLKL	HY/2012/08	2019-04-15	Mid-Ebb	SR7	Cloudy	Moderate	10:04	4.6	Bottom	3	2	23.6	8.4	24.1	7.4	3.3	1.8
TMCLKL	HY/2012/08	2019-04-15	Mid-Ebb	IS17	Cloudy	Moderate	11:12	8.2	Surface	1	1	23.2	8.4	24.3	7.4	7.7	3.4
TMCLKL	HY/2012/08	2019-04-15	Mid-Ebb	IS17	Cloudy	Moderate	11:12	8.2	Surface	1	2	23.2	8.4	24.3	7.4	7.7	3.6
TMCLKL	HY/2012/08	2019-04-15	Mid-Ebb	IS17	Cloudy	Moderate	11:12	8.2	Middle	2	1	23.1	8.4	24.4	7.4	2.7	3.6
TMCLKL	HY/2012/08	2019-04-15	Mid-Ebb	IS17	Cloudy	Moderate	11:12	8.2	Middle	2	2	23.1	8.4	24.4	7.4	2.7	3.8
TMCLKL	HY/2012/08	2019-04-15	Mid-Ebb	IS17	Cloudy	Moderate	11:12	8.2	Bottom	3	1	23.1	8.4	24.5	7.5	2.1	4.1
TMCLKL	HY/2012/08	2019-04-15	Mid-Ebb	IS17	Cloudy	Moderate	11:12	8.2	Bottom	3	2	23.1	8.4	24.5	7.5	2.1	3.7
TMCLKL	HY/2012/08	2019-04-15	Mid-Flood	IS(Mf)11	Rainy	Moderate	14:11	11.5	Surface	1	1	23.7	8.4	25.1	7.3	4.6	1.6
TMCLKL	HY/2012/08	2019-04-15	Mid-Flood	IS(Mf)11	Rainy	Moderate	14:11	11.5	Surface	1	2	23.7	8.4	25.1	7.3	4.6	1.9
TMCLKL	HY/2012/08	2019-04-15	Mid-Flood	IS(Mf)11	Rainy	Moderate	14:11	11.5	Middle	2	1	23.6	8.4	25.2	7.4	3.5	1.3
TMCLKL	HY/2012/08	2019-04-15	Mid-Flood	IS(Mf)11	Rainy	Moderate	14:11	11.5	Middle	2	2	23.6	8.4	25.2	7.4	3.4	1.2
TMCLKL	HY/2012/08	2019-04-15	Mid-Flood	IS(Mf)11	Rainy	Moderate	14:11	11.5	Bottom	3	1	23	8.4	25.7	7.5	8.6	1.4
TMCLKL	HY/2012/08	2019-04-15	Mid-Flood	IS(Mf)11	Rainy	Moderate	14:11	11.5	Bottom	3	2	23	8.4	25.7	7.5	8.3	1.6
TMCLKL	HY/2012/08	2019-04-15	Mid-Flood	SR7	Rainy	Moderate	15:08	4.6	Surface	1	1	23.6	8.4	25.3	7.4	3.2	1.4
TMCLKL	HY/2012/08	2019-04-15	Mid-Flood	SR7	Rainy	Moderate	15:08	4.6	Surface	1	2	23.6	8.4	25.3	7.4	3.1	1.5
TMCLKL	HY/2012/08	2019-04-15	Mid-Flood	SR7	Rainy	Moderate	15:08	4.6	Middle	2	1						
TMCLKL	HY/2012/08	2019-04-15	Mid-Flood	SR7	Rainy	Moderate	15:08	4.6	Middle	2	2						
TMCLKL	HY/2012/08	2019-04-15	Mid-Flood	SR7	Rainy	Moderate	15:08	4.6	Bottom	3	1	23.6	8.4	25.3	7.5	2.6	1.1
TMCLKL	HY/2012/08	2019-04-15	Mid-Flood	SR7	Rainy	Moderate	15:08	4.6	Bottom	3	2	23.6	8.4	25.3	7.5	2.6	1.7
TMCLKL	HY/2012/08	2019-04-15	Mid-Flood	IS17	Cloudy	Moderate	14:06	8.1	Surface	1	1	23.5	8.4	25.5	7.3	7.5	1.3
TMCLKL	HY/2012/08	2019-04-15	Mid-Flood	IS17	Cloudy	Moderate	14:06	8.1	Surface	1	2	23.5	8.4	25.5	7.3	7.5	1.7
TMCLKL	HY/2012/08	2019-04-15	Mid-Flood	IS17	Cloudy	Moderate	14:06	8.1	Middle	2	1	23.5	8.4	25.4	7.3	8	2.1
TMCLKL	HY/2012/08	2019-04-15	Mid-Flood	IS17	Cloudy	Moderate	14:06	8.1	Middle	2	2	23.5	8.4	25.3	7.3	8	2.2
TMCLKL	HY/2012/08	2019-04-15	Mid-Flood	IS17	Cloudy	Moderate	14:06	8.1	Bottom	3	1	23.5	8.4	25.4	7.4	5.3	1.8
TMCLKL	HY/2012/08	2019-04-15	Mid-Flood	IS17	Cloudy	Moderate	14:06	8.1	Bottom	3	2	23.5	8.4	25.4	7.4	5.6	1.4
TMCLKL	HY/2012/08	2019-04-17	Mid-Ebb	IS(Mf)11	Cloudy	Moderate	12:38	11.3	Surface	1	1	24.9	7.9	22.2	6.9	2.2	<0.5
TMCLKL	HY/2012/08	2019-04-17	Mid-Ebb	IS(Mf)11	Cloudy	Moderate	12:38	11.3	Surface	1	2	25	7.9	22.2	6.9	2.1	<0.5
TMCLKL	HY/2012/08	2019-04-17	Mid-Ebb	IS(Mf)11	Cloudy	Moderate	12:38	11.3	Middle	2	1	24.2	7.9	22.9	7	2.5	3.8
TMCLKL	HY/2012/08	2019-04-17	Mid-Ebb	IS(Mf)11	Cloudy	Moderate	12:38	11.3	Middle	2	2	24.4	7.9	22.8	7	2.3	3.2
TMCLKL	HY/2012/08	2019-04-17	Mid-Ebb	IS(Mf)11	Cloudy	Moderate	12:38	11.3	Bottom	3	1	23.9	7.9	23.6	7	2	5.1
TMCLKL	HY/2012/08	2019-04-17	Mid-Ebb	IS(Mf)11	Cloudy	Moderate	12:38	11.3	Bottom	3	2	23.9	7.9	23.6	7	1.9	5.8
TMCLKL	HY/2012/08	2019-04-17	Mid-Ebb	SR7	Cloudy	Moderate	11:37	4.5	Surface	1	1	23.4	8	24.3	6.7	4.5	3
TMCLKL	HY/2012/08	2019-04-17	Mid-Ebb	SR7	Cloudy	Moderate	11:37	4.5	Surface	1	2	23.4	8	24	6.8	4.4	3.2
TMCLKL	HY/2012/08	2019-04-17	Mid-Ebb	SR7	Cloudy	Moderate	11:37	4.5	Middle	2	1						
TMCLKL	HY/2012/08	2019-04-17	Mid-Ebb	SR7	Cloudy	Moderate	11:37	4.5	Middle	2	2						
TMCLKL	HY/2012/08	2019-04-17	Mid-Ebb	SR7	Cloudy	Moderate	11:37	4.5	Bottom	3	1	23.5	8	26.1	6.7	4.8	4.1
TMCLKL	HY/2012/08	2019-04-17	Mid-Ebb	SR7	Cloudy	Moderate	11:37	4.5	Bottom	3	2	23.5	8	26.1	6.7	4.7	4.1
TMCLKL	HY/2012/08	2019-04-17	Mid-Ebb	IS17	Cloudy	Moderate	12:44	9.2	Surface	1	1	24.2	7.9	23.5	6.9	2.3	3.2
TMCLKL	HY/2012/08	2019-04-17	Mid-Ebb	IS17	Cloudy	Moderate	12:44	9.2	Surface	1	2	24.2	7.9	23.5	6.9	2.1	4.1
TMCLKL	HY/2012/08	2019-04-17	Mid-Ebb	IS17	Cloudy	Moderate	12:44	9.2	Middle	2	1	24.4	7.9	23.2	6.8	3.9	2.8
TMCLKL	HY/2012/08	2019-04-17	Mid-Ebb	IS17	Cloudy	Moderate	12:44	9.2	Middle	2	2	24.3	7.9	23.3	6.8	3.9	2.7
TMCLKL	HY/2012/08	2019-04-17	Mid-Ebb	IS17	Cloudy	Moderate	12:44	9.2	Bottom	3	1	24.7	7.9	24.3	6.8	3.7	2.3
TMCLKL	HY/2012/08	2019-04-17	Mid-Ebb	IS17	Cloudy	Moderate	12:44	9.2	Bottom	3	2	24.7	7.9	24.4	6.8	3.7	2.7
TMCLKL	HY/2012/08	2019-04-17	Mid-Flood	IS(Mf)11	Cloudy	Moderate	16:30	11.5	Surface	1	1	24	7.9	23.1	7	12.7	6
TMCLKL	HY/2012/08	2019-04-17	Mid-Flood	IS(Mf)11	Cloudy	Moderate	16:30	11.5	Surface	1	2	24.1	7.9	23.1	7	12.7	5.4
TMCLKL	HY/2012/08	2019-04-17	Mid-Flood	IS(Mf)11	Cloudy	Moderate	16:30	11.5	Middle	2	1	23.9	8	23.8	7	3.4	5.6
TMCLKL	HY/2012/08	2019-04-17	Mid-Flood	IS(Mf)11	Cloudy	Moderate	16:30	11.5	Middle	2	2	23.9	7.9	23.8	7	3.3	6



Project	Works	Date	Tide	Stat	Weather	Sea Condition	Time	Water Depth	Level	Lev_Cod	Replicate	Temp(°C)	pH	Salinity(ppt)	DO(mg/L)	Turbidity(NTU)	SS(mg/L)
TMCLKL	HY/2012/08	2019-04-17	Mid-Flood	IS(Mf)11	Cloudy	Moderate	16:30	11.5	Bottom	3	1	23.9	8	23.9	7	3.7	4.9
TMCLKL	HY/2012/08	2019-04-17	Mid-Flood	IS(Mf)11	Cloudy	Moderate	16:30	11.5	Bottom	3	2	23.9	8	23.9	7	3.7	5.1
TMCLKL	HY/2012/08	2019-04-17	Mid-Flood	SR7	Cloudy	Moderate	17:30	4.7	Surface	1	1	24	8	23	7	3	2.6
TMCLKL	HY/2012/08	2019-04-17	Mid-Flood	SR7	Cloudy	Moderate	17:30	4.7	Surface	1	2	24	8	23	7	2.9	2.6
TMCLKL	HY/2012/08	2019-04-17	Mid-Flood	SR7	Cloudy	Moderate	17:30	4.7	Middle	2	1						
TMCLKL	HY/2012/08	2019-04-17	Mid-Flood	SR7	Cloudy	Moderate	17:30	4.7	Middle	2	2						
TMCLKL	HY/2012/08	2019-04-17	Mid-Flood	SR7	Cloudy	Moderate	17:30	4.7	Bottom	3	1	24.1	8	22.1	7.2	2.8	1.9
TMCLKL	HY/2012/08	2019-04-17	Mid-Flood	SR7	Cloudy	Moderate	17:30	4.7	Bottom	3	2	24.1	8	22.2	7.1	2.9	1.2
TMCLKL	HY/2012/08	2019-04-17	Mid-Flood	IS17	Cloudy	Moderate	16:24	9.3	Surface	1	1	23.7	7.9	24.2	7	7.9	3
TMCLKL	HY/2012/08	2019-04-17	Mid-Flood	IS17	Cloudy	Moderate	16:24	9.3	Surface	1	2	23.7	7.9	24.2	7	7.9	3.6
TMCLKL	HY/2012/08	2019-04-17	Mid-Flood	IS17	Cloudy	Moderate	16:24	9.3	Middle	2	1	23.7	7.9	24.5	7	6.7	5.4
TMCLKL	HY/2012/08	2019-04-17	Mid-Flood	IS17	Cloudy	Moderate	16:24	9.3	Middle	2	2	23.7	7.9	24.5	7	6.7	5.8
TMCLKL	HY/2012/08	2019-04-17	Mid-Flood	IS17	Cloudy	Moderate	16:24	9.3	Bottom	3	1	23.9	8	23.8	7	4.8	6.8
TMCLKL	HY/2012/08	2019-04-17	Mid-Flood	IS17	Cloudy	Moderate	16:24	9.3	Bottom	3	2	23.8	8	23.9	7	5.1	5.2
TMCLKL	HY/2012/08	2019-04-19	Mid-Ebb	IS(Mf)11	Rainy	Moderate	12:29	11.2	Surface	1	1	24.4	8.3	22.7	6.9	10.7	8.2
TMCLKL	HY/2012/08	2019-04-19	Mid-Ebb	IS(Mf)11	Rainy	Moderate	12:29	11.2	Surface	1	2	24.4	8.3	22.7	6.9	10.6	9.1
TMCLKL	HY/2012/08	2019-04-19	Mid-Ebb	IS(Mf)11	Rainy	Moderate	12:29	11.2	Middle	2	1	24.3	8.4	22.6	7	8.3	10.9
TMCLKL	HY/2012/08	2019-04-19	Mid-Ebb	IS(Mf)11	Rainy	Moderate	12:29	11.2	Middle	2	2	24.3	8.4	22.7	7	8.2	11.3
TMCLKL	HY/2012/08	2019-04-19	Mid-Ebb	IS(Mf)11	Rainy	Moderate	12:29	11.2	Bottom	3	1	24.3	8.4	23.5	6.9	17.6	15.1
TMCLKL	HY/2012/08	2019-04-19	Mid-Ebb	IS(Mf)11	Rainy	Moderate	12:29	11.2	Bottom	3	2	24.3	8.4	23.5	6.9	17.6	14.1
TMCLKL	HY/2012/08	2019-04-19	Mid-Ebb	SR7	Rainy	Moderate	12:20	4.3	Surface	1	1	24.5	8.3	21.2	7	17.1	7.2
TMCLKL	HY/2012/08	2019-04-19	Mid-Ebb	SR7	Rainy	Moderate	12:20	4.3	Surface	1	2	24.5	8.3	21.2	7	17	7.2
TMCLKL	HY/2012/08	2019-04-19	Mid-Ebb	SR7	Rainy	Moderate	12:20	4.3	Middle	2	1						
TMCLKL	HY/2012/08	2019-04-19	Mid-Ebb	SR7	Rainy	Moderate	12:20	4.3	Middle	2	2						
TMCLKL	HY/2012/08	2019-04-19	Mid-Ebb	SR7	Rainy	Moderate	12:20	4.3	Bottom	3	1	24.3	8.4	23.9	6.9	10	14.8
TMCLKL	HY/2012/08	2019-04-19	Mid-Ebb	SR7	Rainy	Moderate	12:20	4.3	Bottom	3	2	24.3	8.4	23.9	6.9	10	14.6
TMCLKL	HY/2012/08	2019-04-19	Mid-Ebb	IS17	Rainy	Moderate	13:26	10.2	Surface	1	1	23.6	8.4	23.3	7.1	7.5	11.1
TMCLKL	HY/2012/08	2019-04-19	Mid-Ebb	IS17	Rainy	Moderate	13:26	10.2	Surface	1	2	23.7	8.4	23.3	7.1	7.5	11.9
TMCLKL	HY/2012/08	2019-04-19	Mid-Ebb	IS17	Rainy	Moderate	13:26	10.2	Middle	2	1	23.8	8.4	23.4	6.9	8.8	11.7
TMCLKL	HY/2012/08	2019-04-19	Mid-Ebb	IS17	Rainy	Moderate	13:26	10.2	Middle	2	2	23.8	8.4	23.4	6.9	8.7	11.7
TMCLKL	HY/2012/08	2019-04-19	Mid-Ebb	IS17	Rainy	Moderate	13:26	10.2	Bottom	3	1	23.9	8.4	23.7	6.9	13.8	11.3
TMCLKL	HY/2012/08	2019-04-19	Mid-Ebb	IS17	Rainy	Moderate	13:26	10.2	Bottom	3	2	23.9	8.4	23.7	6.9	13.8	11.6
TMCLKL	HY/2012/08	2019-04-19	Mid-Flood	IS(Mf)11	Rainy	Moderate	19:09	10.8	Surface	1	1	23.5	8.4	22.3	7.1	11.1	10
TMCLKL	HY/2012/08	2019-04-19	Mid-Flood	IS(Mf)11	Rainy	Moderate	19:09	10.8	Surface	1	2	23.5	8.4	22.3	7.1	11.1	9
TMCLKL	HY/2012/08	2019-04-19	Mid-Flood	IS(Mf)11	Rainy	Moderate	19:09	10.8	Middle	2	1	23.5	8.4	22.2	7.1	9.2	11.2
TMCLKL	HY/2012/08	2019-04-19	Mid-Flood	IS(Mf)11	Rainy	Moderate	19:09	10.8	Middle	2	2	23.5	8.4	22.2	7.1	9.1	10.2
TMCLKL	HY/2012/08	2019-04-19	Mid-Flood	IS(Mf)11	Rainy	Moderate	19:09	10.8	Bottom	3	1	23.5	8.4	22.2	7.1	9.1	14.8
TMCLKL	HY/2012/08	2019-04-19	Mid-Flood	IS(Mf)11	Rainy	Moderate	19:09	10.8	Bottom	3	2	23.5	8.4	22.2	7.1	9.1	15.8
TMCLKL	HY/2012/08	2019-04-19	Mid-Flood	SR7	Rainy	Moderate	19:18	4	Surface	1	1	23.6	8.4	22.9	7	9.5	14.4
TMCLKL	HY/2012/08	2019-04-19	Mid-Flood	SR7	Rainy	Moderate	19:18	4	Surface	1	2	23.6	8.4	22.9	7	9.6	13.4
TMCLKL	HY/2012/08	2019-04-19	Mid-Flood	SR7	Rainy	Moderate	19:18	4	Middle	2	1						
TMCLKL	HY/2012/08	2019-04-19	Mid-Flood	SR7	Rainy	Moderate	19:18	4	Middle	2	2						
TMCLKL	HY/2012/08	2019-04-19	Mid-Flood	SR7	Rainy	Moderate	19:18	4	Bottom	3	1	23.6	8.4	23.1	7	13.8	13.1
TMCLKL	HY/2012/08	2019-04-19	Mid-Flood	SR7	Rainy	Moderate	19:18	4	Bottom	3	2	23.6	8.4	23.1	7	13.8	12.2
TMCLKL	HY/2012/08	2019-04-19	Mid-Flood	IS17	Rainy	Moderate	18:13	9.8	Surface	1	1	23.2	8.4	23.3	7.3	13	8.2
TMCLKL	HY/2012/08	2019-04-19	Mid-Flood	IS17	Rainy	Moderate	18:13	9.8	Surface	1	2	23.3	8.4	23.2	7.3	13	8.5
TMCLKL	HY/2012/08	2019-04-19	Mid-Flood	IS17	Rainy	Moderate	18:13	9.8	Middle	2	1	23.5	8.4	23.7	7	9.7	9.5
TMCLKL	HY/2012/08	2019-04-19	Mid-Flood	IS17	Rainy	Moderate	18:13	9.8	Middle	2	2	23.6	8.4	23.6	7	9.7	9.9
TMCLKL	HY/2012/08	2019-04-19	Mid-Flood	IS17	Rainy	Moderate	18:13	9.8	Bottom	3	1	23.4	8.4	22.9	7	6.7	16.6
TMCLKL	HY/2012/08	2019-04-19	Mid-Flood	IS17	Rainy	Moderate	18:13	9.8	Bottom	3	2	23.4	8.4	22.9	7	6.7	16.6
TMCLKL	HY/2012/08	2019-04-22	Mid-Ebb	IS(Mf)11	Fine	Moderate	15:03	11.8	Surface	1	1	25.3	8.1	16.4	6.6	5.3	4.1
TMCLKL	HY/2012/08	2019-04-22	Mid-Ebb	IS(Mf)11	Fine	Moderate	15:03	11.8	Surface	1	2	25.4	8.1	16.3	6.6	5.2	4.2
TMCLKL	HY/2012/08	2019-04-22	Mid-Ebb	IS(Mf)11	Fine	Moderate	15:03	11.8	Middle	2	1	25.1	8.1	16.4	6.6	4.6	2.9
TMCLKL	HY/2012/08	2019-04-22	Mid-Ebb	IS(Mf)11	Fine	Moderate	15:03	11.8	Middle	2	2	25.1	8.1	16.4	6.6	4.4	3.8
TMCLKL	HY/2012/08	2019-04-22	Mid-Ebb	IS(Mf)11	Fine	Moderate	15:03	11.8	Bottom	3	1	25	8.1	16.5	6.7	4.5	4.4
TMCLKL	HY/2012/08	2019-04-22	Mid-Ebb	IS(Mf)11	Fine	Moderate	15:03	11.8	Bottom	3	2	25.1	8.1	16.5	6.6	4.5	4.6
TMCLKL	HY/2012/08	2019-04-22	Mid-Ebb	SR7	Fine	Moderate	15:08	4.5	Surface	1	1	25.2	8.1	16.6	6.6	5.8	6.7
TMCLKL	HY/2012/08	2019-04-22	Mid-Ebb	SR7	Fine	Moderate	15:08	4.5	Surface	1	2	25.2	8.1	16.6	6.6	5.8	5.8

Project	Works	Date	Tide	Stat	Weather	Sea Condition	Time	Water Depth	Level	Lev_Cod	Replicate	Temp(°C)	pH	Salinity(ppt)	DO(mg/L)	Turbidity(NTU)	SS(mg/L)
TMCLKL	HY/2012/08	2019-04-22	Mid-Ebb	SR7	Fine	Moderate	15:08	4.5	Middle	2	1						
TMCLKL	HY/2012/08	2019-04-22	Mid-Ebb	SR7	Fine	Moderate	15:08	4.5	Middle	2	2						
TMCLKL	HY/2012/08	2019-04-22	Mid-Ebb	SR7	Fine	Moderate	15:08	4.5	Bottom	3	1	25.2	8.1	17.4	6.5	7.7	15
TMCLKL	HY/2012/08	2019-04-22	Mid-Ebb	SR7	Fine	Moderate	15:08	4.5	Bottom	3	2	25.1	8.1	17.4	6.5	7.9	14
TMCLKL	HY/2012/08	2019-04-22	Mid-Ebb	IS17	Fine	Moderate	14:02	9.3	Surface	1	1	25.2	8	15.4	6.5	7	3.3
TMCLKL	HY/2012/08	2019-04-22	Mid-Ebb	IS17	Fine	Moderate	14:02	9.3	Surface	1	2	25.2	8	15.4	6.5	7.1	3.9
TMCLKL	HY/2012/08	2019-04-22	Mid-Ebb	IS17	Fine	Moderate	14:02	9.3	Middle	2	1	25.1	8	15.4	6.5	3.8	3.8
TMCLKL	HY/2012/08	2019-04-22	Mid-Ebb	IS17	Fine	Moderate	14:02	9.3	Middle	2	2	25.1	8	15.4	6.4	3.9	2.7
TMCLKL	HY/2012/08	2019-04-22	Mid-Ebb	IS17	Fine	Moderate	14:02	9.3	Bottom	3	1	25.1	8	14.9	6.5	3.7	3.5
TMCLKL	HY/2012/08	2019-04-22	Mid-Ebb	IS17	Fine	Moderate	14:02	9.3	Bottom	3	2	25.1	8	14.9	6.5	3.7	3.6
TMCLKL	HY/2012/08	2019-04-22	Mid-Flood	IS(Mf)11	Cloudy	Moderate	08:18	11.3	Surface	1	1	24.2	8.2	16.9	6.7	5.5	5.8
TMCLKL	HY/2012/08	2019-04-22	Mid-Flood	IS(Mf)11	Cloudy	Moderate	08:18	11.3	Surface	1	2	24.2	8.2	16.9	6.7	5.5	5.9
TMCLKL	HY/2012/08	2019-04-22	Mid-Flood	IS(Mf)11	Cloudy	Moderate	08:18	11.3	Middle	2	1	24.1	8.2	16.9	6.7	5.6	5.5
TMCLKL	HY/2012/08	2019-04-22	Mid-Flood	IS(Mf)11	Cloudy	Moderate	08:18	11.3	Middle	2	2	24.1	8.2	16.9	6.7	5.6	5.2
TMCLKL	HY/2012/08	2019-04-22	Mid-Flood	IS(Mf)11	Cloudy	Moderate	08:18	11.3	Bottom	3	1	24.2	8.2	17.9	6.9	10.1	12.7
TMCLKL	HY/2012/08	2019-04-22	Mid-Flood	IS(Mf)11	Cloudy	Moderate	08:18	11.3	Bottom	3	2	24.2	8.2	17.9	6.8	10.1	13.3
TMCLKL	HY/2012/08	2019-04-22	Mid-Flood	SR7	Cloudy	Moderate	08:12	4.7	Surface	1	1	24.2	8.2	16.3	6.8	5.1	4.5
TMCLKL	HY/2012/08	2019-04-22	Mid-Flood	SR7	Cloudy	Moderate	08:12	4.7	Surface	1	2	24.2	8.2	16.3	6.8	5	5.1
TMCLKL	HY/2012/08	2019-04-22	Mid-Flood	SR7	Cloudy	Moderate	08:12	4.7	Middle	2	1						
TMCLKL	HY/2012/08	2019-04-22	Mid-Flood	SR7	Cloudy	Moderate	08:12	4.7	Middle	2	2						
TMCLKL	HY/2012/08	2019-04-22	Mid-Flood	SR7	Cloudy	Moderate	08:12	4.7	Bottom	3	1	24.2	8.2	18	7	15.4	29.1
TMCLKL	HY/2012/08	2019-04-22	Mid-Flood	SR7	Cloudy	Moderate	08:12	4.7	Bottom	3	2	24.2	8.2	18	6.9	15.5	28.6
TMCLKL	HY/2012/08	2019-04-22	Mid-Flood	IS17	Cloudy	Moderate	09:15	9.4	Surface	1	1	24.7	8.2	16.4	6.8	4.7	2.2
TMCLKL	HY/2012/08	2019-04-22	Mid-Flood	IS17	Cloudy	Moderate	09:15	9.4	Surface	1	2	24.7	8.2	16.4	6.7	4.6	2.8
TMCLKL	HY/2012/08	2019-04-22	Mid-Flood	IS17	Cloudy	Moderate	09:15	9.4	Middle	2	1	24.8	8.3	16.1	6.8	4.3	3.9
TMCLKL	HY/2012/08	2019-04-22	Mid-Flood	IS17	Cloudy	Moderate	09:15	9.4	Middle	2	2	24.8	8.3	16.1	6.8	4.3	2.9
TMCLKL	HY/2012/08	2019-04-22	Mid-Flood	IS17	Cloudy	Moderate	09:15	9.4	Bottom	3	1	24.9	8.3	16.9	6.9	3.9	3.7
TMCLKL	HY/2012/08	2019-04-22	Mid-Flood	IS17	Cloudy	Moderate	09:15	9.4	Bottom	3	2	24.9	8.3	16.9	6.9	4.2	2.8
TMCLKL	HY/2012/08	2019-04-24	Mid-Ebb	IS(Mf)11	Fine	Moderate	15:28	12.6	Surface	1	1	24.8	7.8	15.5	6.3	3.2	2.4
TMCLKL	HY/2012/08	2019-04-24	Mid-Ebb	IS(Mf)11	Fine	Moderate	15:28	12.6	Surface	1	2	24.8	7.8	15.5	6.3	3.2	2.3
TMCLKL	HY/2012/08	2019-04-24	Mid-Ebb	IS(Mf)11	Fine	Moderate	15:28	12.6	Middle	2	1	25	7.8	16	6.4	3.2	4.8
TMCLKL	HY/2012/08	2019-04-24	Mid-Ebb	IS(Mf)11	Fine	Moderate	15:28	12.6	Middle	2	2	25	7.8	16	6.4	3.2	5
TMCLKL	HY/2012/08	2019-04-24	Mid-Ebb	IS(Mf)11	Fine	Moderate	15:28	12.6	Bottom	3	1	23.8	7.8	25.3	5.9	4.2	5.4
TMCLKL	HY/2012/08	2019-04-24	Mid-Ebb	IS(Mf)11	Fine	Moderate	15:28	12.6	Bottom	3	2	23.8	7.8	25.3	5.9	4.2	4.8
TMCLKL	HY/2012/08	2019-04-24	Mid-Ebb	SR7	Fine	Moderate	15:19	5.8	Surface	1	1	25.4	7.8	13.8	6.8	2.4	3.2
TMCLKL	HY/2012/08	2019-04-24	Mid-Ebb	SR7	Fine	Moderate	15:19	5.8	Surface	1	2	25.4	7.8	13.8	6.8	2.4	4.1
TMCLKL	HY/2012/08	2019-04-24	Mid-Ebb	SR7	Fine	Moderate	15:19	5.8	Middle	2	1						
TMCLKL	HY/2012/08	2019-04-24	Mid-Ebb	SR7	Fine	Moderate	15:19	5.8	Middle	2	2						
TMCLKL	HY/2012/08	2019-04-24	Mid-Ebb	SR7	Fine	Moderate	15:19	5.8	Bottom	3	1	24.7	7.8	16.8	6.4	5.3	3.8
TMCLKL	HY/2012/08	2019-04-24	Mid-Ebb	SR7	Fine	Moderate	15:19	5.8	Bottom	3	2	24.7	7.8	16.8	6.4	5.3	2.6
TMCLKL	HY/2012/08	2019-04-24	Mid-Ebb	IS17	Fine	Moderate	15:09	12.1	Surface	1	1	25.1	7.8	15.5	6.5	3.4	4.2
TMCLKL	HY/2012/08	2019-04-24	Mid-Ebb	IS17	Fine	Moderate	15:09	12.1	Surface	1	2	25.1	7.8	15.5	6.5	3.4	5
TMCLKL	HY/2012/08	2019-04-24	Mid-Ebb	IS17	Fine	Moderate	15:09	12.1	Middle	2	1	24.4	7.9	20.8	6.2	5.6	5
TMCLKL	HY/2012/08	2019-04-24	Mid-Ebb	IS17	Fine	Moderate	15:09	12.1	Middle	2	2	24.4	7.9	20.8	6.2	5.6	5.8
TMCLKL	HY/2012/08	2019-04-24	Mid-Ebb	IS17	Fine	Moderate	15:09	12.1	Bottom	3	1	23.7	7.9	26.4	6.1	2.1	7.7
TMCLKL	HY/2012/08	2019-04-24	Mid-Ebb	IS17	Fine	Moderate	15:09	12.1	Bottom	3	2	23.7	7.9	26.4	6.1	2.1	6.4
TMCLKL	HY/2012/08	2019-04-24	Mid-Flood	IS(Mf)11	Fine	Moderate	09:10	11.5	Surface	1	1	25	8.2	15.9	6.6	2.8	3.1
TMCLKL	HY/2012/08	2019-04-24	Mid-Flood	IS(Mf)11	Fine	Moderate	09:10	11.5	Surface	1	2	25	8.2	15.9	6.6	2.8	3.4
TMCLKL	HY/2012/08	2019-04-24	Mid-Flood	IS(Mf)11	Fine	Moderate	09:10	11.5	Middle	2	1	25	8.1	15.4	6.6	3.6	3
TMCLKL	HY/2012/08	2019-04-24	Mid-Flood	IS(Mf)11	Fine	Moderate	09:10	11.5	Middle	2	2	25	8.1	15.4	6.6	3.6	3.6
TMCLKL	HY/2012/08	2019-04-24	Mid-Flood	IS(Mf)11	Fine	Moderate	09:10	11.5	Bottom	3	1	25.1	7.9	16.1	6.6	3.6	3.9
TMCLKL	HY/2012/08	2019-04-24	Mid-Flood	IS(Mf)11	Fine	Moderate	09:10	11.5	Bottom	3	2	25.1	7.9	16.1	6.6	3.6	3.3
TMCLKL	HY/2012/08	2019-04-24	Mid-Flood	SR7	Fine	Moderate	09:05	5.4	Surface	1	1	25	8	13.4	6.6	3.1	3.2
TMCLKL	HY/2012/08	2019-04-24	Mid-Flood	SR7	Fine	Moderate	09:05	5.4	Surface	1	2	25	8	13.4	6.6	3.1	3.5
TMCLKL	HY/2012/08	2019-04-24	Mid-Flood	SR7	Fine	Moderate	09:05	5.4	Middle	2	1						
TMCLKL	HY/2012/08	2019-04-24	Mid-Flood	SR7	Fine	Moderate	09:05	5.4	Middle	2	2						
TMCLKL	HY/2012/08	2019-04-24	Mid-Flood	SR7	Fine	Moderate	09:05	5.4	Bottom	3	1	25	7.8	13.9	6.7	2.8	3.1
TMCLKL	HY/2012/08	2019-04-24	Mid-Flood	SR7	Fine	Moderate	09:05	5.4	Bottom	3	2	25	7.8	13.9	6.7	2.8	4.2

Project	Works	Date	Tide	Stat	Weather	Sea Condition	Time	Water Depth	Level	Lev_Cod	Replicate	Temp(°C)	pH	Salinity(ppt)	DO(mg/L)	Turbidity(NTU)	SS(mg/L)
TMCLKL	HY/2012/08	2019-04-24	Mid-Flood	IS17	Fine	Moderate	10:06	9.4	Surface	1	1	25.3	8.2	16.3	6.5	4.7	3.2
TMCLKL	HY/2012/08	2019-04-24	Mid-Flood	IS17	Fine	Moderate	10:06	9.4	Surface	1	2	25.3	8.2	16.3	6.5	4.7	4.1
TMCLKL	HY/2012/08	2019-04-24	Mid-Flood	IS17	Fine	Moderate	10:06	9.4	Middle	2	1	25.4	8.1	15.8	6.5	4.1	5
TMCLKL	HY/2012/08	2019-04-24	Mid-Flood	IS17	Fine	Moderate	10:06	9.4	Middle	2	2	25.4	8.1	15.8	6.5	4.1	4.6
TMCLKL	HY/2012/08	2019-04-24	Mid-Flood	IS17	Fine	Moderate	10:06	9.4	Bottom	3	1	25.5	7.9	15.8	6.7	4.8	5.6
TMCLKL	HY/2012/08	2019-04-24	Mid-Flood	IS17	Fine	Moderate	10:06	9.4	Bottom	3	2	25.5	7.9	15.8	6.7	4.8	5.2
TMCLKL	HY/2012/08	2019-04-26	Mid-Ebb	IS(Mf)11	Fine	Moderate	17:03	10.9	Surface	1	1	26.5	8	13.8	7.8	3.3	5.3
TMCLKL	HY/2012/08	2019-04-26	Mid-Ebb	IS(Mf)11	Fine	Moderate	17:03	10.9	Surface	1	2	26.7	8	13.8	7.8	3.3	4.7
TMCLKL	HY/2012/08	2019-04-26	Mid-Ebb	IS(Mf)11	Fine	Moderate	17:03	10.9	Middle	2	1	26.3	7.9	15.3	7.3	4.9	3.9
TMCLKL	HY/2012/08	2019-04-26	Mid-Ebb	IS(Mf)11	Fine	Moderate	17:03	10.9	Middle	2	2	26.3	7.9	15.3	7.3	4.8	4.9
TMCLKL	HY/2012/08	2019-04-26	Mid-Ebb	IS(Mf)11	Fine	Moderate	17:03	10.9	Bottom	3	1	26	7.9	16.5	7	3.8	5.5
TMCLKL	HY/2012/08	2019-04-26	Mid-Ebb	IS(Mf)11	Fine	Moderate	17:03	10.9	Bottom	3	2	26.4	8	16.3	7.1	3.7	5.3
TMCLKL	HY/2012/08	2019-04-26	Mid-Ebb	SR7	Fine	Moderate	18:00	5.3	Surface	1	1	27.1	8.1	12.9	8.3	2.6	2.5
TMCLKL	HY/2012/08	2019-04-26	Mid-Ebb	SR7	Fine	Moderate	18:00	5.3	Surface	1	2	27.1	8.1	12.9	8.2	2.5	3.5
TMCLKL	HY/2012/08	2019-04-26	Mid-Ebb	SR7	Fine	Moderate	18:00	5.3	Middle	2	1						
TMCLKL	HY/2012/08	2019-04-26	Mid-Ebb	SR7	Fine	Moderate	18:00	5.3	Middle	2	2						
TMCLKL	HY/2012/08	2019-04-26	Mid-Ebb	SR7	Fine	Moderate	18:00	5.3	Bottom	3	1	27.1	8.1	12.9	8.3	2.6	3.6
TMCLKL	HY/2012/08	2019-04-26	Mid-Ebb	SR7	Fine	Moderate	18:00	5.3	Bottom	3	2	27.1	8.1	12.9	8.3	2.5	4.2
TMCLKL	HY/2012/08	2019-04-26	Mid-Ebb	IS17	Fine	Moderate	16:55	11.4	Surface	1	1	26.6	8.1	14.5	8.2	3.3	4.6
TMCLKL	HY/2012/08	2019-04-26	Mid-Ebb	IS17	Fine	Moderate	16:55	11.4	Surface	1	2	26.5	8.1	14.5	8.2	3.4	5.4
TMCLKL	HY/2012/08	2019-04-26	Mid-Ebb	IS17	Fine	Moderate	16:55	11.4	Middle	2	1	26.3	8	16.4	7.5	3.1	4.3
TMCLKL	HY/2012/08	2019-04-26	Mid-Ebb	IS17	Fine	Moderate	16:55	11.4	Middle	2	2	26.3	8	16.4	7.5	2.9	4.1
TMCLKL	HY/2012/08	2019-04-26	Mid-Ebb	IS17	Fine	Moderate	16:55	11.4	Bottom	3	1	26.3	8	17.3	7.5	2.9	2.8
TMCLKL	HY/2012/08	2019-04-26	Mid-Ebb	IS17	Fine	Moderate	16:55	11.4	Bottom	3	2	26.4	8	17.2	7.5	2.7	2.7
TMCLKL	HY/2012/08	2019-04-26	Mid-Flood	IS(Mf)11	Cloudy	Moderate	06:31	11.1	Surface	1	1	25.6	7.6	8.5	6.8	6	4.7
TMCLKL	HY/2012/08	2019-04-26	Mid-Flood	IS(Mf)11	Cloudy	Moderate	06:31	11.1	Surface	1	2	25.6	7.6	8.5	6.8	5.9	4.9
TMCLKL	HY/2012/08	2019-04-26	Mid-Flood	IS(Mf)11	Cloudy	Moderate	06:31	11.1	Middle	2	1	25.7	7.7	10.5	6.8	6.5	4.2
TMCLKL	HY/2012/08	2019-04-26	Mid-Flood	IS(Mf)11	Cloudy	Moderate	06:31	11.1	Middle	2	2	25.7	7.7	10.5	6.8	6.6	3.2
TMCLKL	HY/2012/08	2019-04-26	Mid-Flood	IS(Mf)11	Cloudy	Moderate	06:31	11.1	Bottom	3	1	25.9	7.7	10.9	7	5.2	2.9
TMCLKL	HY/2012/08	2019-04-26	Mid-Flood	IS(Mf)11	Cloudy	Moderate	06:31	11.1	Bottom	3	2	25.8	7.7	10.9	6.9	5.2	3.4
TMCLKL	HY/2012/08	2019-04-26	Mid-Flood	SR7	Cloudy	Moderate	05:25	5.2	Surface	1	1	25.6	7.7	8.1	7	5.2	4.2
TMCLKL	HY/2012/08	2019-04-26	Mid-Flood	SR7	Cloudy	Moderate	05:25	5.2	Surface	1	2	25.6	7.7	8.1	7	5.3	3.2
TMCLKL	HY/2012/08	2019-04-26	Mid-Flood	SR7	Cloudy	Moderate	05:25	5.2	Middle	2	1						
TMCLKL	HY/2012/08	2019-04-26	Mid-Flood	SR7	Cloudy	Moderate	05:25	5.2	Middle	2	2						
TMCLKL	HY/2012/08	2019-04-26	Mid-Flood	SR7	Cloudy	Moderate	05:25	5.2	Bottom	3	1	25.6	7.7	10.2	7	5.5	4.9
TMCLKL	HY/2012/08	2019-04-26	Mid-Flood	SR7	Cloudy	Moderate	05:25	5.2	Bottom	3	2	25.6	7.7	10.2	7	5.4	4.7
TMCLKL	HY/2012/08	2019-04-26	Mid-Flood	IS17	Cloudy	Moderate	06:38	11.2	Surface	1	1	25.7	7.8	11.7	7	8.3	3.8
TMCLKL	HY/2012/08	2019-04-26	Mid-Flood	IS17	Cloudy	Moderate	06:38	11.2	Surface	1	2	25.7	7.8	11.7	7	8.2	2.8
TMCLKL	HY/2012/08	2019-04-26	Mid-Flood	IS17	Cloudy	Moderate	06:38	11.2	Middle	2	1	25.7	7.8	14.5	6.9	13	3.4
TMCLKL	HY/2012/08	2019-04-26	Mid-Flood	IS17	Cloudy	Moderate	06:38	11.2	Middle	2	2	25.7	7.8	14.5	6.9	13.2	2.4
TMCLKL	HY/2012/08	2019-04-26	Mid-Flood	IS17	Cloudy	Moderate	06:38	11.2	Bottom	3	1	25.7	7.7	15.3	6.9	4.3	2.6
TMCLKL	HY/2012/08	2019-04-26	Mid-Flood	IS17	Cloudy	Moderate	06:38	11.2	Bottom	3	2	25.6	7.7	15.4	6.9	4.3	3.6
TMCLKL	HY/2012/08	2019-04-29	Mid-Ebb	IS(Mf)11	Cloudy	Moderate	10:07	11.3	Surface	1	1	25.2	8	12	7.9	3.2	4.6
TMCLKL	HY/2012/08	2019-04-29	Mid-Ebb	IS(Mf)11	Cloudy	Moderate	10:07	11.3	Surface	1	2	25.2	8	12	7.9	3.4	3.7
TMCLKL	HY/2012/08	2019-04-29	Mid-Ebb	IS(Mf)11	Cloudy	Moderate	10:07	11.3	Middle	2	1	25.1	8.1	12.6	7.8	3.5	3.6
TMCLKL	HY/2012/08	2019-04-29	Mid-Ebb	IS(Mf)11	Cloudy	Moderate	10:07	11.3	Middle	2	2	25.2	8.1	12.6	7.9	3.5	4.4
TMCLKL	HY/2012/08	2019-04-29	Mid-Ebb	IS(Mf)11	Cloudy	Moderate	10:07	11.3	Bottom	3	1	24.9	8	16.2	7.6	3.1	4.8
TMCLKL	HY/2012/08	2019-04-29	Mid-Ebb	IS(Mf)11	Cloudy	Moderate	10:07	11.3	Bottom	3	2	24.9	8	16.2	7.6	3	4
TMCLKL	HY/2012/08	2019-04-29	Mid-Ebb	SR7	Cloudy	Moderate	10:02	4.6	Surface	1	1	25.1	8.1	12.4	7.9	1.8	3.8
TMCLKL	HY/2012/08	2019-04-29	Mid-Ebb	SR7	Cloudy	Moderate	10:02	4.6	Surface	1	2	25	8.1	12.4	7.9	1.8	3.1
TMCLKL	HY/2012/08	2019-04-29	Mid-Ebb	SR7	Cloudy	Moderate	10:02	4.6	Middle	2	1						
TMCLKL	HY/2012/08	2019-04-29	Mid-Ebb	SR7	Cloudy	Moderate	10:02	4.6	Middle	2	2						
TMCLKL	HY/2012/08	2019-04-29	Mid-Ebb	SR7	Cloudy	Moderate	10:02	4.6	Bottom	3	1	25.2	8.1	12.7	7.9	1.8	3.4
TMCLKL	HY/2012/08	2019-04-29	Mid-Ebb	SR7	Cloudy	Moderate	10:02	4.6	Bottom	3	2	25.2	8.1	12.7	7.9	1.8	2.5
TMCLKL	HY/2012/08	2019-04-29	Mid-Ebb	IS17	Cloudy	Moderate	10:59	11	Surface	1	1	25.2	8.1	17.3	8.1	3.2	4.7
TMCLKL	HY/2012/08	2019-04-29	Mid-Ebb	IS17	Cloudy	Moderate	10:59	11	Surface	1	2	25.2	8.1	17.3	8.1	3.3	3.6
TMCLKL	HY/2012/08	2019-04-29	Mid-Ebb	IS17	Cloudy	Moderate	10:59	11	Middle	2	1	25.4	8.1	17.5	8.1	2.9	5.1
TMCLKL	HY/2012/08	2019-04-29	Mid-Ebb	IS17	Cloudy	Moderate	10:59	11	Middle	2	2	25.3	8.1	17.5	8.1	2.9	4.3

Project	Works	Date	Tide	Stat	Weather	Sea Condition	Time	Water Depth	Level	Lev_Cod	Replicate	Temp(°C)	pH	Salinity(ppt)	DO(mg/L)	Turbidity(NTU)	SS(mg/L)
TMCLKL	HY/2012/08	2019-04-29	Mid-Ebb	IS17	Cloudy	Moderate	10:59	11	Bottom	3	1	25.6	8.1	16.9	8	3.1	5
TMCLKL	HY/2012/08	2019-04-29	Mid-Ebb	IS17	Cloudy	Moderate	10:59	11	Bottom	3	2	25.4	8.1	16.9	8.1	2.3	4
TMCLKL	HY/2012/08	2019-04-29	Mid-Flood	IS(Mf)11	Cloudy	Moderate	15:03	12.8	Surface	1	1	25.7	8.1	19.6	7.9	9.3	6.5
TMCLKL	HY/2012/08	2019-04-29	Mid-Flood	IS(Mf)11	Cloudy	Moderate	15:03	12.8	Surface	1	2	25.5	8.1	19.6	7.9	9.4	6.6
TMCLKL	HY/2012/08	2019-04-29	Mid-Flood	IS(Mf)11	Cloudy	Moderate	15:03	12.8	Middle	2	1	25	7.9	23	5.9	10	6
TMCLKL	HY/2012/08	2019-04-29	Mid-Flood	IS(Mf)11	Cloudy	Moderate	15:03	12.8	Middle	2	2	25	7.9	23	6	9.6	5
TMCLKL	HY/2012/08	2019-04-29	Mid-Flood	IS(Mf)11	Cloudy	Moderate	15:03	12.8	Bottom	3	1	24.5	7.8	29.1	5.7	11.1	3
TMCLKL	HY/2012/08	2019-04-29	Mid-Flood	IS(Mf)11	Cloudy	Moderate	15:03	12.8	Bottom	3	2	24.5	7.8	28.9	5.7	11.6	2
TMCLKL	HY/2012/08	2019-04-29	Mid-Flood	SR7	Cloudy	Moderate	15:12	4.6	Surface	1	1	26	8.2	18.5	8.3	9.9	6.4
TMCLKL	HY/2012/08	2019-04-29	Mid-Flood	SR7	Cloudy	Moderate	15:12	4.6	Surface	1	2	25.9	8.2	18.6	8.2	10.4	6.9
TMCLKL	HY/2012/08	2019-04-29	Mid-Flood	SR7	Cloudy	Moderate	15:12	4.6	Middle	2	1						
TMCLKL	HY/2012/08	2019-04-29	Mid-Flood	SR7	Cloudy	Moderate	15:12	4.6	Middle	2	2						
TMCLKL	HY/2012/08	2019-04-29	Mid-Flood	SR7	Cloudy	Moderate	15:12	4.6	Bottom	3	1	25.2	7.9	20.4	7	10.7	5.3
TMCLKL	HY/2012/08	2019-04-29	Mid-Flood	SR7	Cloudy	Moderate	15:12	4.6	Bottom	3	2	25.3	7.9	20.4	7	10.6	6.3
TMCLKL	HY/2012/08	2019-04-29	Mid-Flood	IS17	Cloudy	Moderate	14:06	11	Surface	1	1	26.4	8.4	17.3	10.4	10.2	8.9
TMCLKL	HY/2012/08	2019-04-29	Mid-Flood	IS17	Cloudy	Moderate	14:06	11	Surface	1	2	26.2	8.3	17.3	10.5	9.8	9.8
TMCLKL	HY/2012/08	2019-04-29	Mid-Flood	IS17	Cloudy	Moderate	14:06	11	Middle	2	1	25	7.9	22.3	6	10	6.5
TMCLKL	HY/2012/08	2019-04-29	Mid-Flood	IS17	Cloudy	Moderate	14:06	11	Middle	2	2	25	7.9	22.5	6	9.6	7.5
TMCLKL	HY/2012/08	2019-04-29	Mid-Flood	IS17	Cloudy	Moderate	14:06	11	Bottom	3	1	24.6	7.8	28	5.9	10.2	8.1
TMCLKL	HY/2012/08	2019-04-29	Mid-Flood	IS17	Cloudy	Moderate	14:06	11	Bottom	3	2	25	7.9	27.5	5.8	9.9	8.8