

Appendix B

## Construction Programme

**TMCLKL Northern Connection Sub-sea Tunnel Section**

**Possession / Access Dates**

N13Ji, Jii, Ki & Kii - Possession / Access (after E&M scope)	0	16-Oct-19	
--	---	-----------	--

**Contract Key Dates**

[KD-2b] Stage 2b Completion - TSS between CP33 to CP13	0	15-Apr-19*	
[KD-2c] Stage 2c Completion - Remaining TSS & TSA	0	30-Sep-19*	
[KD-2d] Stage 2d Completion - MHS C&C Tunnel	0	15-Nov-19*	
[KD-3a] Stage 3a Completion - NLF UU/At-grade Provision	0	07-Jan-20*	
[KD-3b] Stage 3b Completion - NLF Provision for CLP, LV & I	0	02-Oct-19*	
[KD-3d] Stage 3d Completion - SLF Provision for CLP, LV & I	0	29-Jan-20*	
[KD-3f] Stage 3f Achievement - NLS/NAR - provide access	0	02-Oct-19*	
[KD-3g] Stage 3g Completion - SVS Tunnel	0	30-Sep-19*	
[KD-3h] Stage 3h Completion - SVS Ventilation Duct	0	31-Dec-19*	
[KD-3i] Stage 3i Completion - South Approach Ramp	0	15-Oct-19*	
[KD-8] Section 1 Completion - NLF Reclamation & Seawall	0	02-Jan-20*	
[KD-10] Section 3A Completion - SVB	0	20-Jul-19*	
[KD-10a] Stage 5 Completion - SVB BL2	0	11-May-19*	

**Portion Handover Dates**

N5 - Handover	0	30-Apr-19*	
N10 (excl Tunnel) - Handover	0	30-Sep-19*	
N11A - Handover	0	15-Feb-19*	
N11B - Handover	0	15-Feb-19*	
N13Ji, Jii, Ki & Kii - Handover for E&M Contract scope	0	15-Feb-19*	
N13B - Handover	0	12-Apr-19*	

**North Approach Ramp**

[KD-3f] Stage 3f Achievement - NAR - provide access	0	02-Oct-19*	
---	---	------------	--

**Access Ramp Section**

NAR Pipe Pile Section - Strut S2 Removal	24	12-Mar-19	09-Apr-19
NAR Pipe Pile Section - Wall up to S1	48	26-Mar-19	27-May-19
NAR Pipe Pile Section - Strut S1 Removal	24	14-May-19	11-Jun-19
NAR Pipe Pile Section - Wall Remaining	48	28-May-19	24-Jul-19

**NLS Interface (OAP-NAR-DWG-10442-B)**

Strut Installation and Excavation down to FWL	12	15-Feb-19	28-Feb-19
NLS Cell 3 Dwall removal (down to -6.0mPD) - 134m3	18	01-Mar-19	21-Mar-19
NLS/NAR Stitch structure - Base Slab & S2 removed	36	19-Mar-19	04-May-19
Resume Tunnel Ramp Access	0	06-May-19	
NLS/NAR Stitch structure - Remaining Wall Structure & Strut	48	06-May-19	03-Jul-19
NAR Parapet, Cable Trough	58	25-Jul-19	02-Oct-19*

**North Launching Shaft**

[KD-3f] Stage 3f Achievement - NLS - provide access	0	02-Oct-19*	
---	---	------------	--

**NLS Cell 1-3 Remaining Structure**

Availability of NAR Access to Tunnel	0	06-May-19	
Cell 1 & 2 Top Slab Closing	24	22-May-19	19-Jun-19
<b>ML03</b>			
ML03 Cell 1 & 2 BRL Structure	48	20-Feb-19	17-Apr-19
NLS W6 & W7 - Wall opening - closing	24	03-Apr-19	06-May-19
ML03 Cell 1 & 2 OHVD Slab	24	18-Apr-19	21-May-19

**Box Culvert Extension**

**Main Culvert Structure (Ch000-399)**

[KD-8] Section 1 Completion - Northern Landfall & Box Culv	0	02-Jan-20*	
--	---	------------	--

**NLF Demobilization & At-grade works**

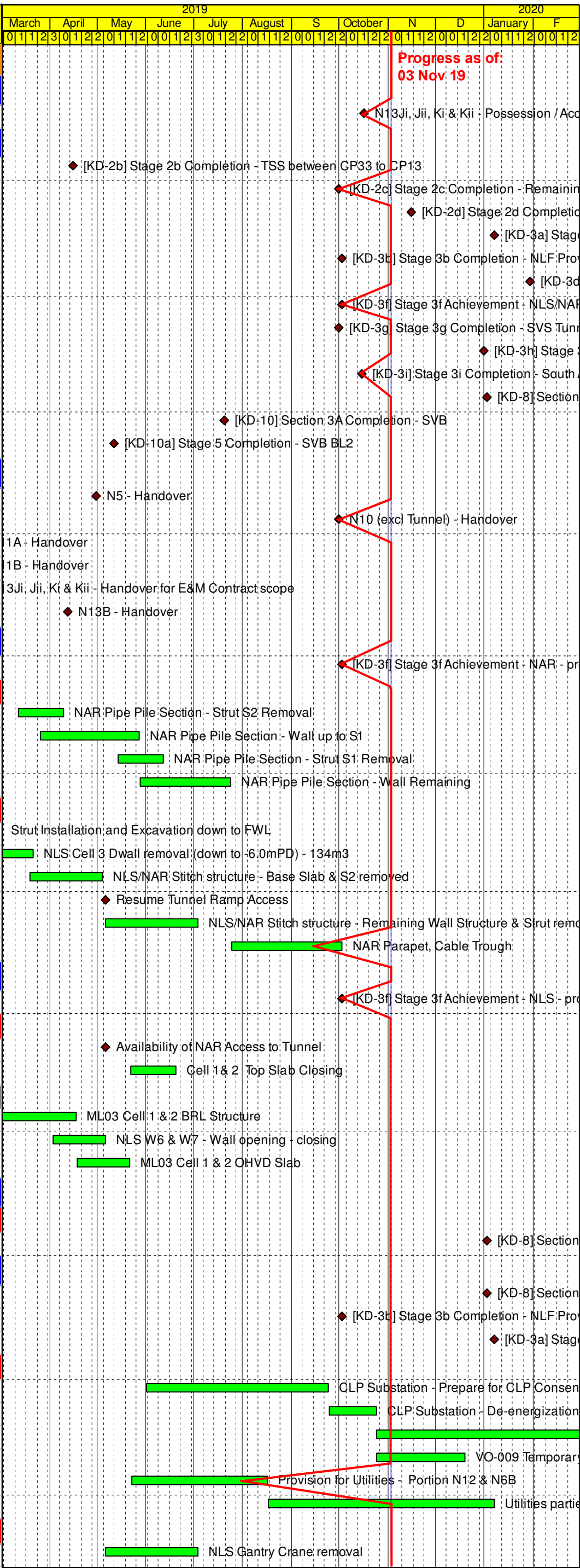
[KD-8] Section 1 Completion - NLF Reclamation & Seawall	0	02-Jan-20*	
[KD-3b] Stage 3b Completion - NLF Provision for CLP, LV & I	0	02-Oct-19*	
[KD-3a] Stage 3a Completion - NLF UU/At-grade Provision	0	07-Jan-20*	

**Portion N12 & Portion N6B**

CLP Substation - Prepare for CLP Consent for de-energiza	96	01-Jun-19	24-Sep-19
CLP Substation - De-energization	24	25-Sep-19	24-Oct-19
CLP Substation - Dismantling & Removal	178	25-Oct-19	01-Jun-20
VO-009 Temporary Protection Barrier - Dismantling & Remc	48	25-Oct-19	19-Dec-19
Provision for Utilities - Portion N12 & N6B	72	23-May-19	16-Aug-19
Utilities parties coordination & Remaining Civil Provision - I	117	17-Aug-19	07-Jan-20

**North Launching Shaft**

NLS Gantry Crane removal	48	06-May-19	03-Jul-19
--------------------------	----	-----------	-----------



Progress as of:  
03 Nov 19

Activity Name	Orig Dur	Start	Finish	2019												2020																	
				March			April			May			June			July			August			S	October			N	D			January			F
				0	1	2	3	0	1	2	0	1	2	0	0	1	2	3	0	1	2	0	0	1	2	0	0	1	2	0	0	1	2
Drainages & Watermain - NLS	194	21-Feb-19	17-Oct-19	Drainages & Watermain - NLS																													
Provision for Utilities - NLS	96	23-Jul-19	14-Nov-19	Provision for Utilities - NLS																													
Utilities parties coordination & Remaining Civil Provision - I	43	15-Nov-19	07-Jan-20	Utilities parties coordination & Remaining Civil Provision - I																													
<b>Sloping Seawall</b>																																	
Workshop & Amenities - Removal	48	26-Mar-19	27-May-19	Workshop & Amenities - Removal																													
Drainages & Watermain - Workshop & Amenities	96	09-May-19	31-Aug-19	Drainages & Watermain - Workshop & Amenities																													
Provision for Utilities - Workshop & Amenities	48	05-Aug-19	30-Sep-19	Provision for Utilities - Workshop & Amenities																													
Utilities parties coordination & Remaining Civil Provision - I	80	02-Oct-19	07-Jan-20	Utilities parties coordination & Remaining Civil Provision - I																													
<b>Precast Segment Yard</b>																																	
Provision for Utilities - Zone C Roundabout	72	04-Mar-19	01-Jun-19	Provision for Utilities - Zone C Roundabout																													
Utilities parties coordination & Remaining Civil Provision - 2	180	03-Jun-19	07-Jan-20	Utilities parties coordination & Remaining Civil Provision - 2																													
Gantry Crane 2 & 3 - Dismantling	48	24-Sep-19	20-Nov-19	Gantry Crane 2 & 3 - Dismantling																													
Gantry Crane 2 & 3 Area - Ground slab removal	12	21-Nov-19	04-Dec-19	Gantry Crane 2 & 3 Area - Ground slab removal																													
Zone C Area - Final Compaction for Handover	22	05-Dec-19	02-Jan-20	Zone C Area - Final Compaction for Handover																													
<b>NVS &amp; STP (Portion N7 Interface)</b>																																	
FSDB/CEDB ELS system - Removal from Portion X (by C4)	0	15-Apr-19*		FSDB/CEDB ELS system - Removal from Portion X (by C4)																													
Branch drains & Watermain Terminal Manholes - FSDB/CEI	72	15-Apr-19	15-Jul-19	Branch drains & Watermain Terminal Manholes - FSDB/CEI																													
FSDB/CEDB Terminal Manholes	48	16-Jul-19	09-Sep-19	FSDB/CEDB Terminal Manholes																													
Provision for Utilities - Portion N7 Interface	36	20-Aug-19	02-Oct-19	Provision for Utilities - Portion N7 Interface																													
Utilities parties coordination & Remaining Civil Provision - N7	79	03-Oct-19	07-Jan-20	Utilities parties coordination & Remaining Civil Provision - N7																													
Provision for Utilities - NVS / STP	72	04-Jun-19	28-Aug-19	Provision for Utilities - NVS / STP																													
Utilities parties coordination & Remaining Civil Provision - I	107	29-Aug-19	07-Jan-20	Utilities parties coordination & Remaining Civil Provision - I																													
<b>Northern Landfall - Overall</b>																																	
Road Kerb Installation & Sub-base - NLF At-grade	48	03-Oct-19	28-Nov-19	Road Kerb Installation & Sub-base - NLF At-grade																													
Pavement - NLF At-grade	36	18-Nov-19	31-Dec-19	Pavement - NLF At-grade																													
Street Furniture and Road Marking - NLF At-grade	36	23-Nov-19	07-Jan-20	Street Furniture and Road Marking - NLF At-grade																													
<b>Tunnel - Thermal Barrier</b>																																	
[KD-2b] Stage 2b Completion - TSS between CP33 to CP13	0		15-Apr-19*	[KD-2b] Stage 2b Completion - TSS between CP33 to CP13																													
<b>Fire board Installation below OHVD</b>																																	
Fire Board between CP33 and CP13																																	
ML03 Fire Board Installation - CPS - TSS CP15-CP13 - RL	8	08-Mar-19	16-Mar-19	ML03 Fire Board Installation - CPS - TSS CP15-CP13 - RL - CH3050																													
ML02 Fire Board Installation - CPS - TSS CP15-CP13 - RL	3	12-Mar-19	14-Mar-19	ML02 Fire Board Installation - CPS - TSS CP15-CP13 - RL - CH3060																													
<b>Fire board Installation above OHVD</b>																																	
Fire Board Installation - NLS	12	04-Sep-19	18-Sep-19	Fire Board Installation - NLS																													
Fire Board installation - TNA+NVS - above OHVD Slab - ML	13	18-Mar-19	01-Apr-19	Fire Board installation - TNA+NVS - above OHVD Slab - ML02																													
Fire Board installation - TNA+NVS - above OHVD Slab - ML	17	02-Apr-19	25-Apr-19	Fire Board installation - TNA+NVS - above OHVD Slab - ML03																													
Fire Board installation - North TSS - above OHVD Slab	30	26-Apr-19	01-Jun-19	Fire Board installation - North TSS - above OHVD Slab																													
Fire Board installation - South TSS - above OHVD Slab	39	03-Jun-19	19-Jul-19	Fire Board installation - South TSS - above OHVD Slab																													
Fire Board installation - ML02 TSS CP13 to SVS	15	20-Jul-19	06-Aug-19	Fire Board installation - ML02 TSS CP13 to SVS																													
Fire Board installation - ML02 TSA	8	07-Aug-19	15-Aug-19	Fire Board installation - ML02 TSA																													
Fire Board installation - ML03 TSS CP13 to SVS	16	16-Aug-19	03-Sep-19	Fire Board installation - ML03 TSS CP13 to SVS																													
Fire Board installation - ML03 TSA	7	19-Sep-19	26-Sep-19	Fire Board installation - ML03 TSA																													
Fire Board installation - MHS C&C below OHVD	30	27-Sep-19	02-Nov-19	Fire Board installation - MHS C&C below OHVD																													
Fire Board installation - MHS C&C above OHVD	16	04-Nov-19	21-Nov-19	Fire Board installation - MHS C&C above OHVD																													
ML02 TSS OHVD Slab Completion	0		30-May-19	ML02 TSS OHVD Slab Completion																													
ML02 TSA OHVD Slab Completion	0		27-Jul-19	ML02 TSA OHVD Slab Completion																													
ML03 TSS OHVD Slab Completion	0		28-Aug-19	ML03 TSS OHVD Slab Completion																													
ML03 TSA OHVD Slab Completion	0		23-Sep-19	ML03 TSA OHVD Slab Completion																													
<b>Tunnel - Anchor / E&amp;M Bracket (VO72)</b>																																	
VO72 - Drilling & Anchor Installation - Remaining Tunnel	84	31-Jul-19	08-Nov-19	VO72 - Drilling & Anchor Installation - Remaining Tunnel																													
VO72 - Bracket Installation - Tunnel between CP13 to SVS M	13	07-Aug-19	21-Aug-19	VO72 - Bracket Installation - Tunnel between CP13 to SVS M																													
VO72 - Bracket Installation - MHS TBM Tunnel ML02 (20R/d)	7	22-Aug-19	29-Aug-19	VO72 - Bracket Installation - MHS TBM Tunnel ML02 (20R/d)																													
VO72 - Bracket Installation - Tunnel between CP13 to SVS M	13	30-Aug-19	13-Sep-19	VO72 - Bracket Installation - Tunnel between CP13 to SVS M																													
VO72 - Bracket Installation - NLS	7	16-Sep-19	23-Sep-19	VO72 - Bracket Installation - NLS																													
VO72 - Bracket Installation - MHS TBM Tunnel ML03 (20R/d)	6	24-Sep-19	30-Sep-19	VO72 - Bracket Installation - MHS TBM Tunnel ML03 (20R/d)																													
VO72 - Bracket Installation - MHS C&C Tunnel	38	02-Oct-19	15-Nov-19	VO72 - Bracket Installation - MHS C&C Tunnel																													
<b>Tunnel Roadworks</b>																																	
North Approach Ramp & Launching Shaft	15	20-Jun-19	08-Jul-19	North Approach Ramp & Launching Shaft																													
North Approach TBM Tunnel and NVS Tunnel	30	09-Jul-19	12-Aug-19	North Approach TBM Tunnel and NVS Tunnel																													
Sub-sea Tunnel from NVS to CP33	30	13-Aug-19	17-Sep-19	Sub-sea Tunnel from NVS to CP33																													
Sub-sea Tunnel from CP33 to CP13	45	18-Sep-19	11-Nov-19	Sub-sea Tunnel from CP33 to CP13																													
Sub-sea Tunnel from CP13 to SVS	5	12-Nov-19	16-Nov-19	Sub-sea Tunnel from CP13 to SVS																													
MHS TBM Tunnel	12	02-Jan-20	15-Jan-20	MHS TBM Tunnel																													
MHS C&C Tunnel and Approach Ramp	41	16-Jan-20	06-Mar-20	MHS C&C Tunnel and Approach Ramp																													



Date	Revision	Checked	Approved
22-Dec-17	Rev. H	WYu	
05-Feb-18	Rev. I AC	WYu	
07-Mar-18	Rev. I	WYu	
18-Jul-18	Rev. J	WYu	



Tunnel Road Marking | 45 | 07-Mar-20 | 04-May-20

**ML02 South Ventilation Shaft**

[KD-3g] Stage 3g Completion - SVS Tunnel | 0 | 30-Sep-19\* | [KD-3g] Stage 3g Completion - SVS Tunnel

[KD-3h] Stage 3h Completion - SVS Ventilation Duct | 0 | 31-Dec-19\* | [KD-3h] Stage 3h Completion - SVS Ventilation Duct

**ML02 SVS Structure**

Tunnel Box			
ML02 SVS BRL (West) - Ramp / Backfill Removal	12	24-Apr-19	08-May-19
ML02 SVS BRL walls (West)	33	09-May-19	18-Jun-19
ML02 SVS RL Slab (West)	15	19-Jun-19	06-Jul-19
ML02 SVS West wall remaining after CP7	18	02-Sep-19	23-Sep-19
ML02 SVS Tunnel - Prepare for E&M Contractor Access	6	24-Sep-19	30-Sep-19
Above Tunnel Vent Duct			
ML02 SVS Tunnel Roof Wall (-28.70 to -21.90)	30	12-Feb-19	18-Mar-19
ML02 SVS Above Tunnel Roof Wall & Slab (-21.90 to -18.70)	36	19-Mar-19	04-May-19
ML02 SVS Below BL2 Wall & Slab + Backfill (-18.70 to -6.95)	60	06-May-19	17-Jul-19
ML02 SVS Dwall opening for Duct connection to SVB S1	24	18-Jul-19	14-Aug-19
ML02 SVS BL2 Wall & Slab (-6.95 to -0.45)	27	15-Aug-19	16-Sep-19
ML02 SVS Dwall opening for Duct connection to SVB S2	27	24-Sep-19	26-Oct-19
ML02 SVS BL1 Wall & Slab (-0.45 to +1.80)	30	28-Oct-19	30-Nov-19
ML02 SVS Duct Roof Wall & Slab	24	02-Dec-19	31-Dec-19
ML02 SVS Tunnel Roof to BBL2 W/P & Backfill (-21.90 to -8.00)	60	06-May-19	17-Jul-19
ML02 SVS BL2 W/P & Backfill (-8.00 to -0.65)	21	29-Aug-19	23-Sep-19
ML02 SVS Remaining Backfill to G.L. (-0.65 to +5.5mPD)	12	02-Jan-20	15-Jan-20

**CP7 South Ventilation Shaft**

**ML02 SVS**

ML02 SVS Access Ramp for CP7	6	12-Feb-19	18-Feb-19
ML02 SVS CP7 Dwall opening + Excavation (Bottom)	24	19-Feb-19	18-Mar-19
ML02 SVS CP7 Invert Slab, Wall & Middle Slab	15	19-Mar-19	04-Apr-19
ML02 SVS CP7 Temp Strut	6	06-Apr-19	12-Apr-19
ML02 SVS CP7 Bottom section backfilling	6	13-Apr-19	23-Apr-19
ML02 SVS CP7 Upper Excavation & modify arches	24	08-Jul-19	03-Aug-19
ML02 SVS CP7 Top section - Structure	24	05-Aug-19	31-Aug-19

**ML03 South Ventilation Shaft**

**ML03 SVS Structure**

Tunnel Box			
ML03 SVS ARL Wall	21	23-Feb-19	19-Mar-19
ML03 SVS Tunnel Roof Slab	15	20-Mar-19	06-Apr-19
Above Tunnel Vent Duct			
ML03 SVS Tunnel Roof Wall (-28.70 to -21.90)	30	08-Apr-19	17-May-19
ML03 SVS Above Tunnel Roof Wall & Slab	36	18-May-19	29-Jun-19
ML03 SVS Below BL2 Wall & Slab (-18.70 to -6.95)	50	02-Jul-19	28-Aug-19
ML03 SVS Dwall opening for Duct connection to SVB	18	29-Aug-19	19-Sep-19
ML03 SVS BL2 Duct Connection to SVB	30	20-Sep-19	26-Oct-19
ML03 SVS Dwall opening for Duct connection to SVB	18	04-Nov-19	23-Nov-19
ML03 SVS BL1 Duct connection to SVB	30	25-Nov-19	31-Dec-19
ML03 SVS Tunnel Roof to BBL2 W/P & Backfill(-21.90 to -8.00)	45	16-Jul-19	05-Sep-19
ML03 SVS BL2 W/P & Backfill (-8.00 to -0.65)	24	05-Oct-19	02-Nov-19
ML03 SVS Remaining Backfill to G.L. (-0.65 to +5.5mPD)	12	02-Jan-20	15-Jan-20

**South Ventilation Building**

**Structure**

SVB - BL1 External Wall - Stage 2 & Precast + GL Slab	24	12-Feb-19	11-Mar-19
SVB - GL Wall + 1F Slab	24	12-Mar-19	09-Apr-19
SVB - 1F Wall + 2F Slab	24	26-Mar-19	26-Apr-19
SVB - 2F Wall + RF Slab	24	10-Apr-19	11-May-19

**ABWF**

SVB - BL1 ABWF	24	26-Mar-19	26-Apr-19
SVB - GF ABWF	24	27-Apr-19	27-May-19
SVB - 1F ABWF	24	14-May-19	11-Jun-19
SVB - 2F ABWF	24	28-May-19	25-Jun-19
SVB - Remaining ABWF	21	26-Jun-19	20-Jul-19
SVB - Roof Structure	60	22-Jul-19	30-Sep-19
SVB - Provide Access for BL2 Lower Plenum Rooms	0		15-Feb-19
SVB - Provide Access for BL1 Upper Attenuator Rooms	0		26-Apr-19
SVB - Provide Access for GF	0		27-May-19





Activity Name	Orig Dur	Start	Finish	2019												2020																			
				March			April			May			June			July			August		S		October		N		D		January		F				
				0	1	2	3	0	1	2	3	0	1	2	3	0	1	2	3	0	1	2	3	0	1	2	3	0	1	2	3	0	1	2	3
Cell 11 FEL for C&C Structure Start	0		26-Apr-19																																
Cell 10 FEL for C&C Structure Start	0		24-May-19																																
Cell 09 FEL for C&C Structure Start	0		08-Jun-19																																
Cell 08 FEL for C&C Structure Start	0		15-Jun-19																																
Cell 07 FEL for C&C Structure Start	0		22-Jun-19																																
Cell 06 FEL for C&C Structure Start	0		05-Aug-19																																
Cell 05 FEL for C&C Structure Start	0		22-Jul-19																																
Cell 04 FEL for C&C Structure Start	0		08-Jul-19																																
<b>Main Box Structure</b>																																			
Cell 13 C&C Structure (In-situ) & system fwk assembly	163	18-Mar-19	04-Oct-19																																
Cell 12 C&C Structure - Base Slab, Wall & Top Slab & OHV	72	08-Apr-19	08-Jul-19																																
Cell 11 C&C Structure - Base Slab, Wall & Top Slab & OHV	72	29-Apr-19	25-Jul-19																																
Cell 10 C&C Structure - Base Slab, Wall & Top Slab & OHV	72	25-May-19	19-Aug-19																																
Cell 09 C&C Structure - Base Slab, Wall & Top Slab & OHV	72	13-Jun-19	05-Sep-19																																
Cell 08 C&C Structure - Base Slab, Wall & Top Slab & OHV	72	02-Jul-19	24-Sep-19																																
Cell 07 C&C Structure - Base Slab, Wall & Top Slab & OHV	72	19-Jul-19	14-Oct-19																																
Cell 06 C&C Structure - Base Slab, Wall & Top Slab & OHV	72	06-Aug-19	31-Oct-19																																
Cell 05 C&C Structure - Base Slab, Wall & Top Slab & OHV	78	03-Aug-19	05-Nov-19																																
Cell 04 C&C Structure - Base Slab, Wall & Top Slab & OHV	78	13-Jul-19	15-Oct-19																																
Cell 03 C&C Structure - Base Slab, Wall & Top Slab & OHV	78	02-Apr-19	10-Jul-19																																
Cell 02 C&C Structure - Base Slab, Wall & Top Slab & OHV	78	12-Mar-19	18-Jun-19																																
Cell 01 C&C Structure - Wall Structure	30	26-Jun-19	31-Jul-19																																
Cell 01 C&C Structure - Top Slab and OHVD Slab	36	10-Aug-19	21-Sep-19																																
Lead Time for MHS C&C Thermal Barrier	9	06-Nov-19	15-Nov-19																																
KD-2d MHS C&C Tunnel - Provide Access	0		15-Nov-19*																																
<b>MHS C&amp;C Tunnel Backfilling</b>																																			
MHS C&C Tunnel - Backfilling - Cell 13 to Cell 01	170	05-Oct-19	04-May-20																																
<b>MHS Approach Ramp</b>																																			
[KD-3i] Stage 3i Completion - South Approach Ramp	0		15-Oct-19*																																
<b>MHS Approach Ramp Structure</b>																																			
SAR Structure - Retaining Wall - Cell 15	66	04-Mar-19	25-May-19																																
SAR Structure - Base Slab - Cell 14	24	18-Mar-19	15-Apr-19																																
SAR Structure - Retaining Wall - Cell 14	78	16-Apr-19	23-Jul-19																																
SAR Structure - Mass Concrete	60	10-Jul-19	18-Sep-19																																
SAR Structure - Parapet & Walkway	45	21-Aug-19	15-Oct-19																																
<b>VO73 SCB Foundation &amp; Substructure</b>																																			
<b>Foundation</b>																																			
Portion N11A,B, N13K,J - Handover	0		15-Feb-19																																
<b>Southern Landfall - Surface</b>																																			
[KD-3d] Stage 3d Completion - SLF Provision for CLP, LV & I	0		29-Jan-20*																																
<b>HKBCF Seawall Modification (schedule TBC)</b>																																			
HKBCF Vertical Seawall - place Rock underlayer upper	9	25-Feb-19	06-Mar-19																																
HKBCF Vertical Seawall - place Armour Rock	31	07-Mar-19	12-Apr-19																																
<b>UU / At-grade works</b>																																			
Drainage & Watermain - SLF	216	20-Mar-19	09-Dec-19																																
Drainage & Watermain - SLF Portion N13Ji, Jii, Ki & Kii	82	16-Oct-19	23-Jan-20																																
Provision for Utilities - SLF West	110	13-Sep-19	29-Jan-20																																
Provision for Utilities - SLF East	110	29-Oct-19	11-Mar-20																																
Utilities parties coordination & Remaining Civil Provision - SLF	77	30-Jan-20	04-May-20																																
Road Kerb Installation & Sub-base - SLF At-grade	48	30-Jan-20	25-Mar-20																																
Pavement - SLF At-grade	36	07-Mar-20	21-Apr-20																																
Street Furniture and Road Marking - SLF At-grade	36	18-Mar-20	04-May-20																																



Date	Revision	Checked	Approved
22-Dec-17	Rev. H	WYu	
05-Feb-18	Rev. I AC	WYu	
07-Mar-18	Rev. I	WYu	
18-Jul-18	Rev. J	WYu	