

Appendix I

Impact Dolphin Monitoring Survey

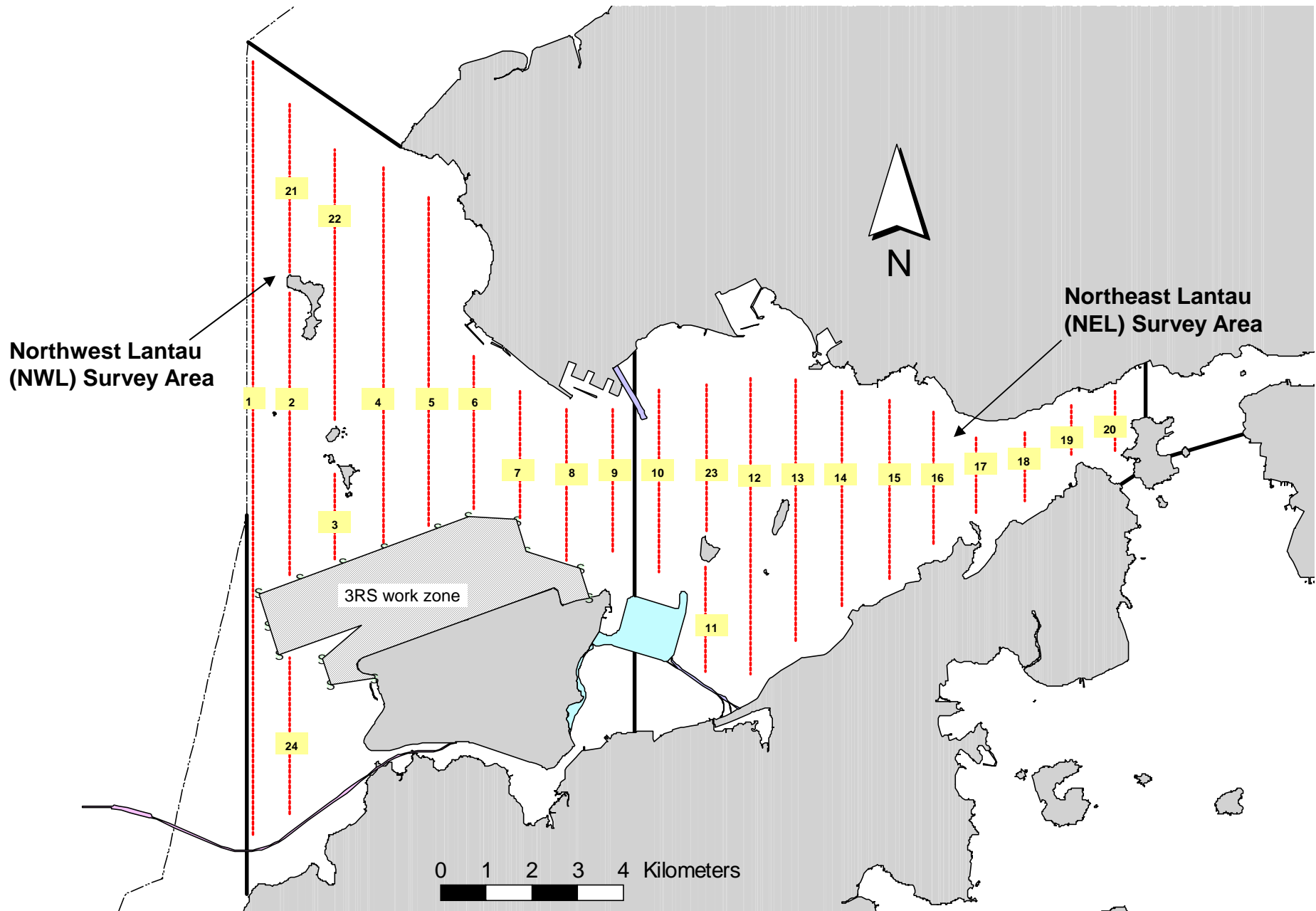


Figure 1. Transect Line Layout in Northwest and Northeast Lantau Survey Areas

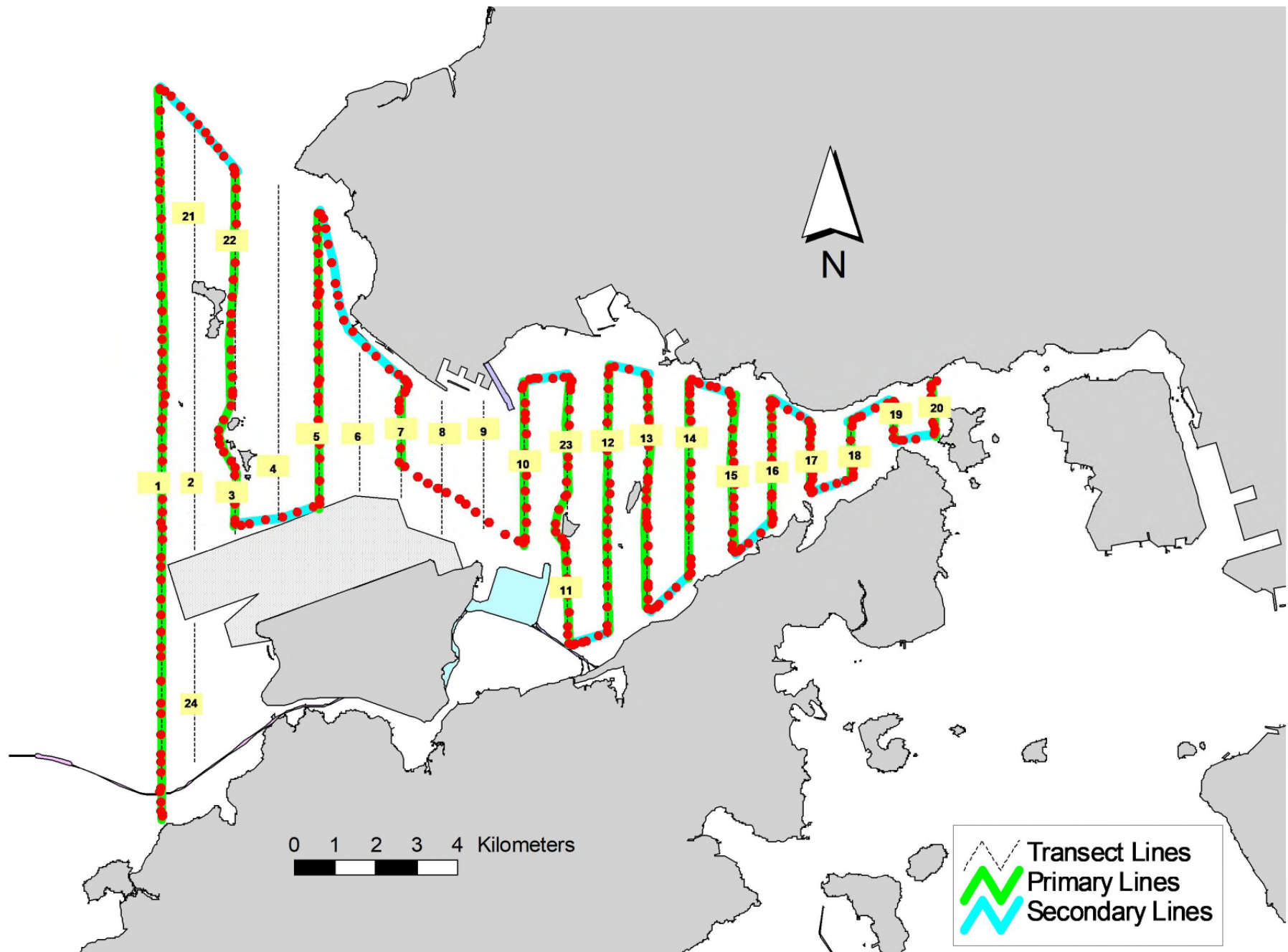


Figure 2. Survey Route on January 2nd, 2020

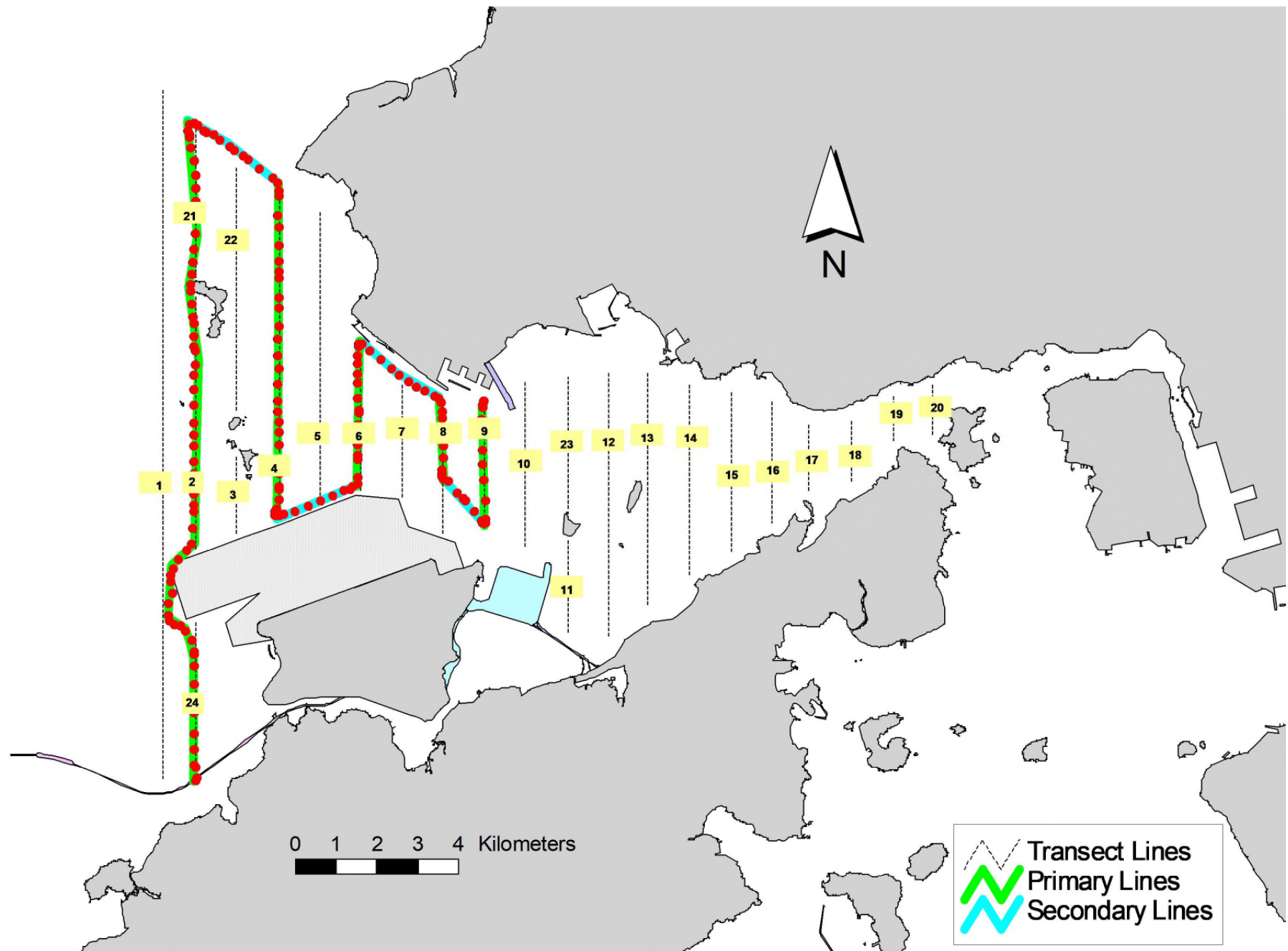


Figure 3. Survey Route on January 6th, 2020

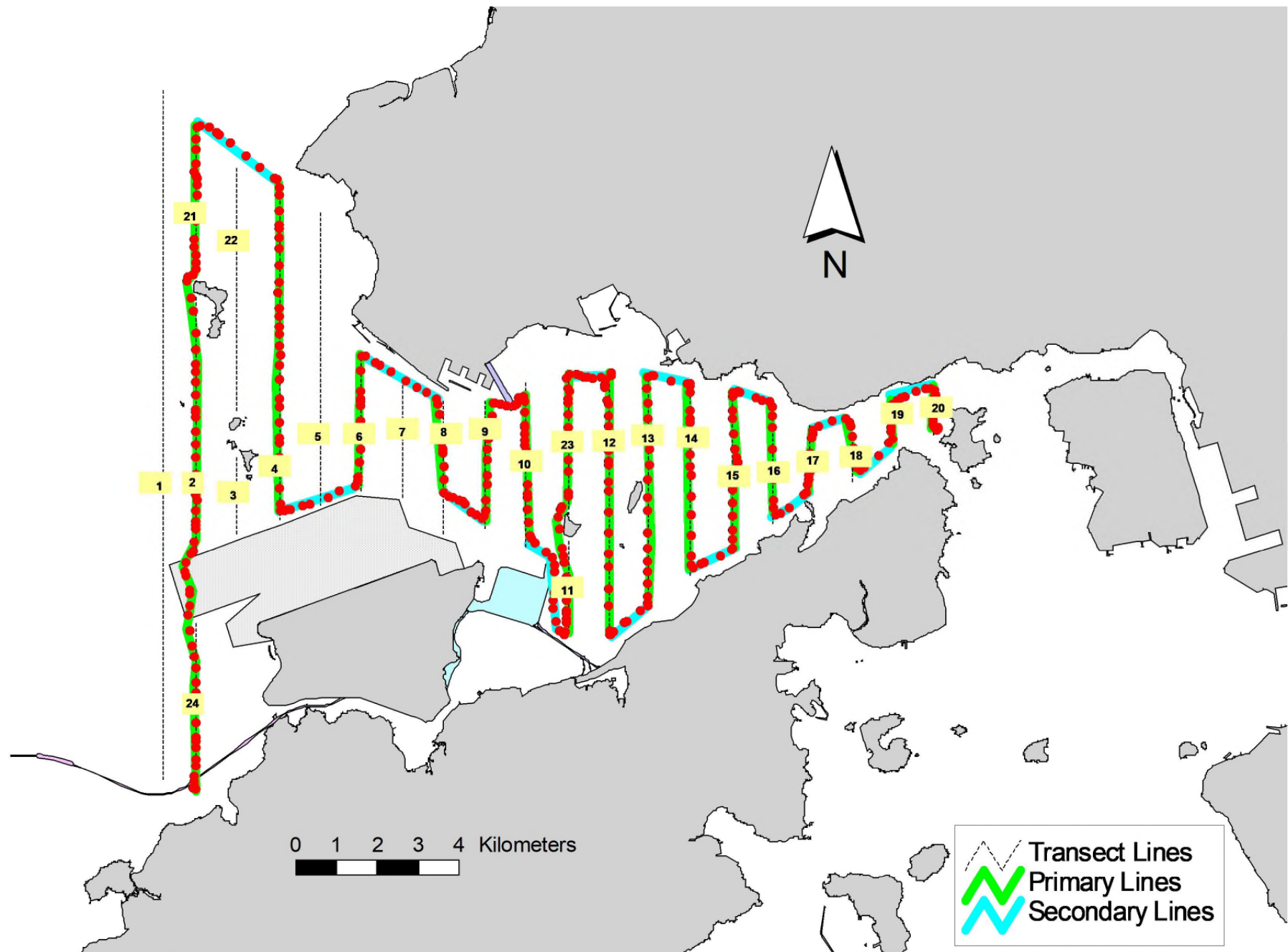


Figure 4. Survey Route on January 9th, 2020

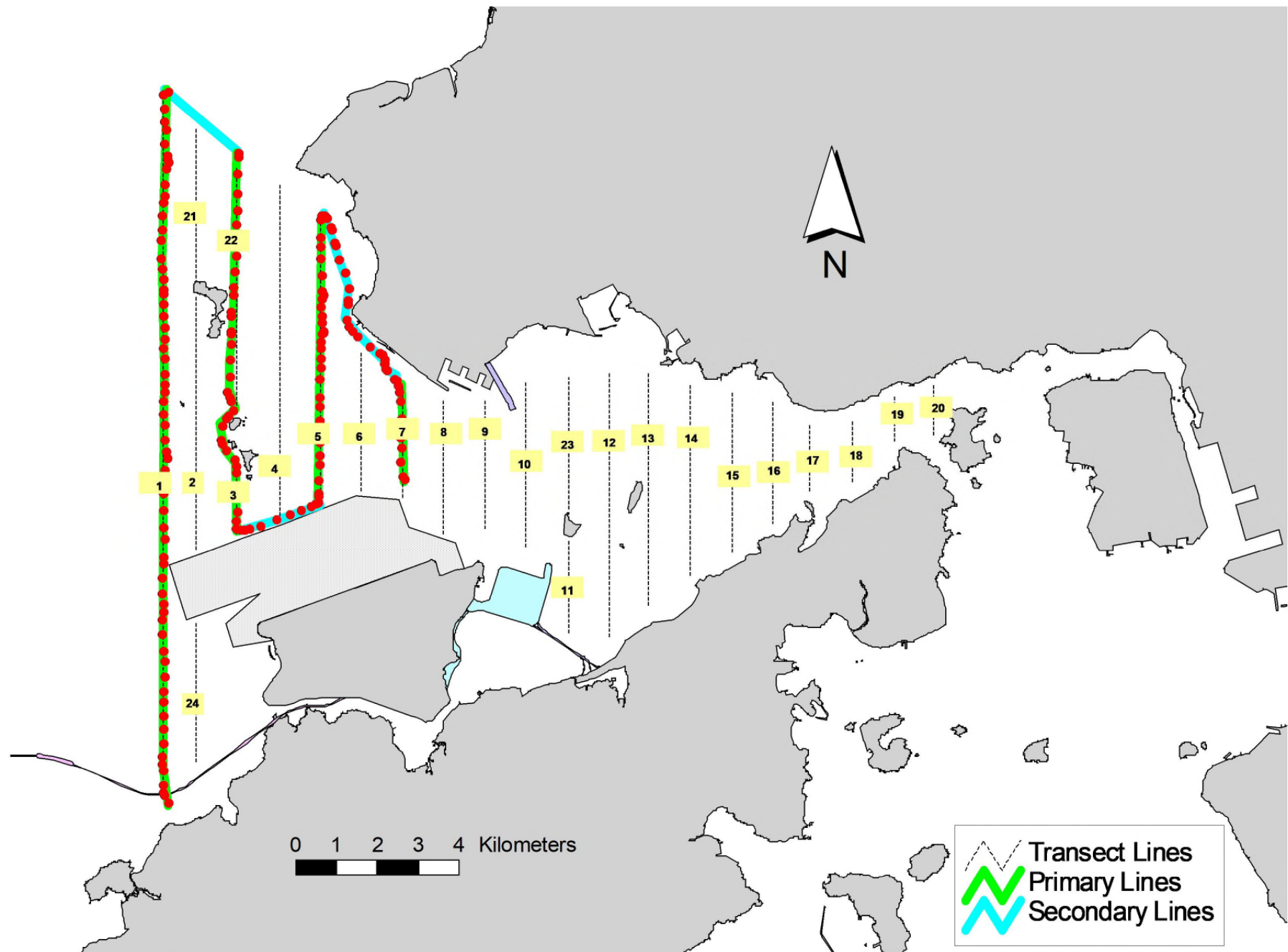


Figure 5. Survey Route on January 16th, 2020

Appendix I. TMCLKL Survey Effort Database (January 2020)

(Abbreviations: BEAU = Beaufort Sea State; P = Primary Line Effort; S = Secondary Line Effort)

DATE	AREA	BEAU	EFFORT	SEASON	VESSEL	TYPE	P/S
2-Jan-20	NW LANTAU	2	32.30	WINTER	STANDARD36826	TMCLKL	P
2-Jan-20	NW LANTAU	2	11.20	WINTER	STANDARD36826	TMCLKL	S
2-Jan-20	NE LANTAU	2	36.31	WINTER	STANDARD36826	TMCLKL	P
2-Jan-20	NE LANTAU	2	12.59	WINTER	STANDARD36826	TMCLKL	S
6-Jan-20	NW LANTAU	2	13.30	WINTER	STANDARD36826	TMCLKL	P
6-Jan-20	NW LANTAU	3	14.25	WINTER	STANDARD36826	TMCLKL	P
6-Jan-20	NW LANTAU	2	7.90	WINTER	STANDARD36826	TMCLKL	S
6-Jan-20	NW LANTAU	3	4.85	WINTER	STANDARD36826	TMCLKL	S
9-Jan-20	NW LANTAU	2	10.10	WINTER	STANDARD36826	TMCLKL	P
9-Jan-20	NW LANTAU	3	17.66	WINTER	STANDARD36826	TMCLKL	P
9-Jan-20	NW LANTAU	2	1.20	WINTER	STANDARD36826	TMCLKL	S
9-Jan-20	NW LANTAU	3	9.84	WINTER	STANDARD36826	TMCLKL	S
9-Jan-20	NE LANTAU	2	19.91	WINTER	STANDARD36826	TMCLKL	P
9-Jan-20	NE LANTAU	3	14.81	WINTER	STANDARD36826	TMCLKL	P
9-Jan-20	NE LANTAU	2	7.70	WINTER	STANDARD36826	TMCLKL	S
9-Jan-20	NE LANTAU	3	5.78	WINTER	STANDARD36826	TMCLKL	S
16-Jan-20	NW LANTAU	2	16.55	WINTER	STANDARD36826	TMCLKL	P
16-Jan-20	NW LANTAU	3	16.60	WINTER	STANDARD36826	TMCLKL	P
16-Jan-20	NW LANTAU	2	8.05	WINTER	STANDARD36826	TMCLKL	S