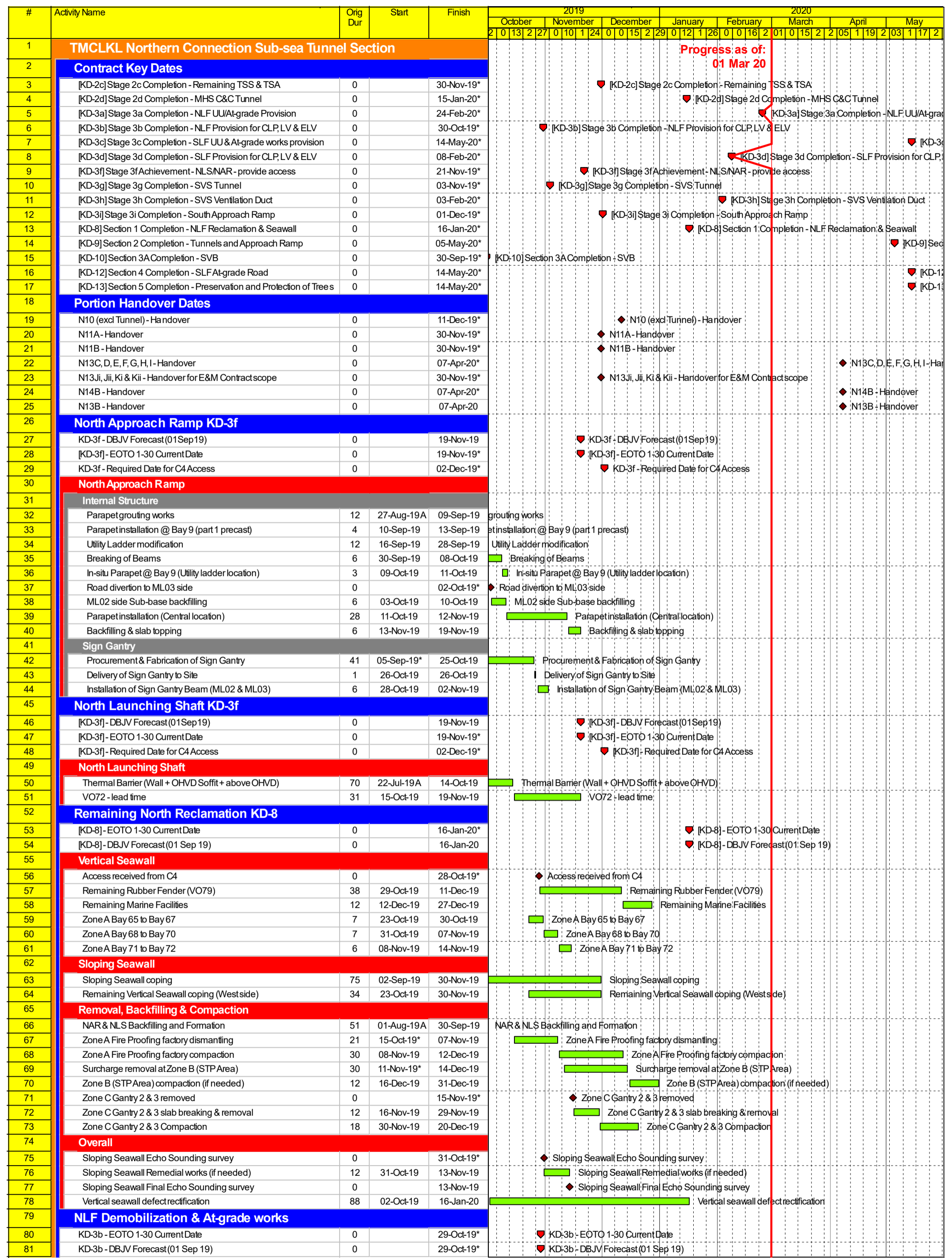
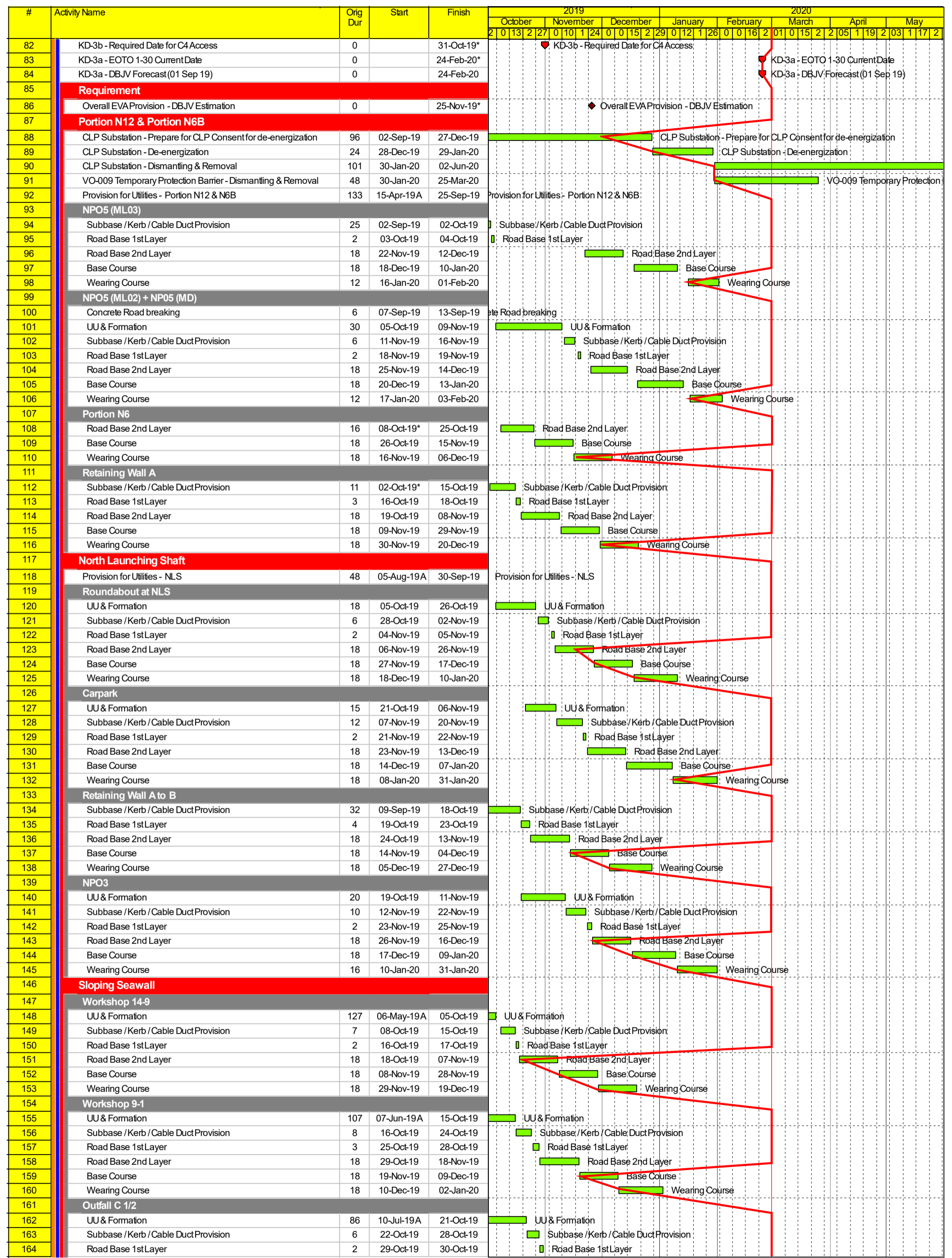


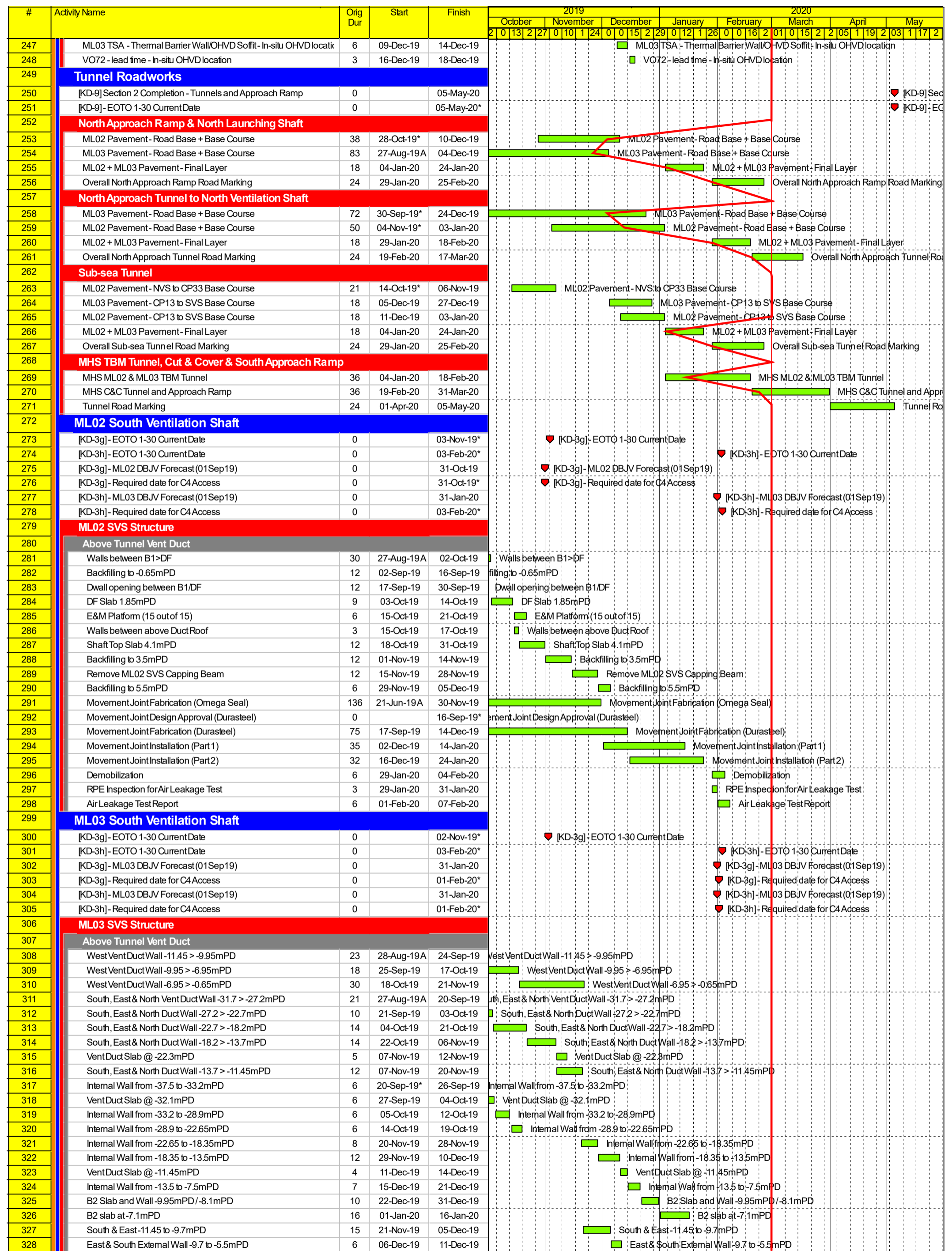
Appendix B

## Construction Programme









#	Activity Name	Orig Dur	Start	Finish	2019						2020																							
					October		November		December		January		February		March		April		May															
					20	13	2	27	0	10	1	24	0	0	15	2	29	0	12	1	26	0	0	16	2	01	0	15	2	2	05	1	19	2
329	East & South External Wall -5.5 to -1.45mPD	7	12-Dec-19	18-Dec-19																														
330	Waterproofing -8.1 to -1.45mPD	3	19-Dec-19	21-Dec-19																														
331	B1 Slab -0.65mPD (Part 1)	6	01-Jan-20	06-Jan-20																														
332	Duct Roof Wall and Slab +1.85mPD (Part 1)	7	07-Jan-20	13-Jan-20																														
333	B2 Wall -7.1 to -1.45mPD	4	17-Jan-20	20-Jan-20																														
334	B1 Slab -0.65mPD (Part 2)	4	21-Jan-20	24-Jan-20																														
335	Duct Roof Wall and Slab +1.85mPD (Part 2)	7	25-Jan-20	31-Jan-20																														
336	Shaft Backfilling from -31.7mPD to -8.1mPD	25	21-Nov-19	15-Dec-19																														
337	Mass concrete backfilling to -1.45mPD	10	16-Dec-19	25-Dec-19																														
338	SVS Ground Slab	7	16-Dec-19	22-Dec-19																														
339	SVS Strengthening Beam	12	23-Dec-19	03-Jan-20																														
340	Dwall Cutting Layer A to G	8	04-Jan-20	11-Jan-20																														
341	RPE Inspection for Air Leakage Test	3	29-Jan-20	31-Jan-20																														
342	Air Leakage Test Report	6	01-Feb-20	06-Feb-20																														
343	Movement Joint Fabrication (Omega Seal)	136	21-Jun-19A	30-Nov-19																														
344	Movement Joint Design Approval (Durasteel)	0		16-Sep-19*																														
345	Movement Joint Fabrication (Durasteel)	87	17-Sep-19	31-Dec-19																														
346	Movement Joint Installation	29	01-Feb-20	29-Feb-20																														
347	Backfilling to +3.5mPD	34	01-Feb-20	05-Mar-20																														
348	Remove Capping Beam	12	06-Mar-20	17-Mar-20																														
349	Backfilling to +5.5mPD	3	18-Mar-20	20-Mar-20																														

**South Ventilation Building KD-10**

351	[KD-10]- DBJV Forecast Provide Full Access	0		30-Sep-19*	[KD-10]- DBJV Forecast Provide Full Access
352	[KD-10]- EOTO 1-30 Current Date	0		30-Sep-19*	[KD-10]- EOTO 1-30 Current Date
353	<b>ABWF</b>				
354	SVB - BL1 ABWF	79	20-Jun-19A	21-Sep-19	SVB - BL1 ABWF
355	SVB - GFABWF	85	20-Jun-19A	28-Sep-19	SVB - GFABWF
356	SVB - 1FABWF	42	12-Aug-19A	30-Sep-19	SVB - 1FABWF
357	SVB - 2FABWF	27	29-Aug-19A	30-Sep-19	SVB - 2FABWF
358	Overall outstanding ABWF	51	02-Oct-19	30-Nov-19	Overall outstanding ABWF
359	SVB - Roof Structure	60	02-Oct-19	11-Dec-19	SVB - Roof Structure
360	SVB - External works	60	02-Oct-19	11-Dec-19	SVB - External works
361	SVB - Provide Access for GF	0		04-Sep-19*	SVB - Provide Access for GF
362	SVB - Provide Access for 1F	0		30-Sep-19*	SVB - Provide Access for 1F
363	SVB - Provide Access for Upper Plenum Rooms	0		30-Sep-19*	SVB - Provide Access for Upper Plenum Rooms
364	SVB - Provide Full Access	0		30-Sep-19*	SVB - Provide Full Access
365	Portion N10 - Handover	0		11-Dec-19*	Portion N10 - Handover

**MHS Cut-and-cover Tunnel KD-2d**

367	[KD-2d]- EOTO 1-32 Current Date	0		15-Jan-20*	[KD-2d]- EOTO 1-32 Current Date
368	[KD-2d]- Required date for C4 Access	0		30-Jan-20*	[KD-2d]- Required date for C4 Access
369	[KD-2d]- DBJV Forecast (01 Sep 19)	0		30-Jan-20	[KD-2d]- DBJV Forecast (01 Sep 19)

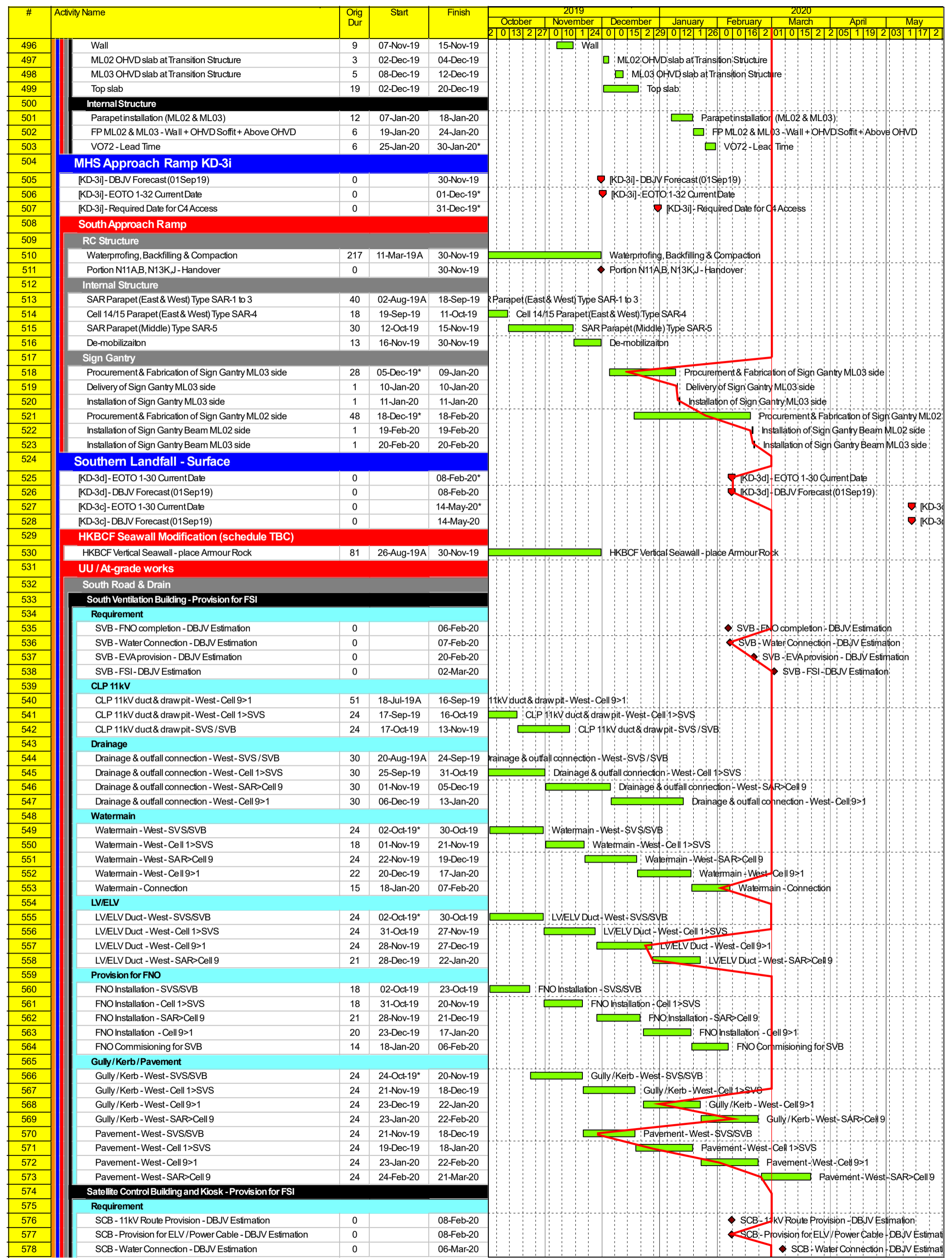
**MHS C&C Tunnel Backfilling**

371	MHS C&C Tunnel - Backfilling - Cell 13 to Cell 01	199	10-Jul-19A	07-Mar-20	MHS C&C Tunnel - Backfilling - Cell 13 to Cell 01
-----	---	-----	------------	-----------	---

**South MHS Cut-and-cover KD-2d**

Wall	
<b>Traveller Formworks</b>	
Wall 9 - Cell 6	22   09-Aug-19A   03-Sep-19
<b>Traditional Formworks</b>	
Wall 12 - Cell 8	40   31-Jul-19A   16-Sep-19
Top Slab	
<b>Traveller Formworks</b>	
Top Slab 3	22   12-Aug-19A   05-Sep-19
Top Slab 5	15   25-Sep-19   14-Oct-19
Top Slab 7	15   01-Nov-19   18-Nov-19
Top Slab 8	10   19-Nov-19   29-Nov-19
Top Slab Traveler dismatting	12   30-Nov-19   13-Dec-19
Top Slab 4	15   06-Sep-19   24-Sep-19
Top Slab 6	15   15-Oct-19   31-Oct-19
<b>Traditional Formworks</b>	
Top Slab 11	21   12-Sep-19   09-Oct-19
Top Slab 10	26   17-Oct-19   15-Nov-19
Top Slab 12	30   27-Sep-19   02-Nov-19
Top Slab 14	31   12-Aug-19A   17-Sep-19
Top Slab 9	18   19-Oct-19   08-Nov-19
Portal Structure	24   18-Sep-19   17-Oct-19
OHVD	
<b>Traveller Formworks</b>	
OHVD 2	20   29-Aug-19A   21-Sep-19
OHVD 3	12   23-Sep-19   08-Oct-19
OHVD 4	12   09-Oct-19   22-Oct-19
OHVD 5	12   23-Oct-19   05-Nov-19
OHVD 6	12   06-Nov-19   19-Nov-19
OHVD 7	12   20-Nov-19   03-Dec-19
OHVD 8	10   14-Dec-19   27-Dec-19
OHVD slab Traveler dismatting	7   28-Dec-19   06-Jan-20
<b>Traditional Formworks</b>	
OHVD 12	25   28-Aug-19A   26-Sep-19
OHVD 13	21   23-Sep-19   18-Oct-19
OHVD 10	21   24-Aug-19A   18-Sep-19
OHVD 9	18   26-Sep-19   18-Oct-19
Backfilling	
Cell 12 Backfilled	0     07-Dec-19*
Cell 11 Backfilled	0     07-Dec-19*





■ Planned Bar  
◆ Planned Milestone  
♥ Key Date  
◆ Progress Milestone  
■ Progress Bar

Dragages - Bouygues Joint Venture 寶嘉 - 布依格聯營  
 Member of the Bouygues Construction Group

Date	Revision	Checked	Approved
22-Dec-17	Rev.H	WYu	
05-Feb-18	Rev.IAC	WYu	
07-Mar-18	Rev.I	WYu	
04-Jun-18	Rev.J	WYu	
11-Nov-19	Rev.K	SPa	WYu
22-Jan-20	Rev.K1	SPa	WYu



#	Activity Name	Orig Dur	Start	Finish	2019					2020					
					October	November	December	January	February	March	April	May			
					20	27	04	11	18	25	02	09	16	23	30
579	SCB - FNO completion - DBJV Estimation	0		24-Mar-20											◆ SCB - FNO completion - DBJV Estimation
580	SCB - EVA provision - DBJV Estimation	0		27-Mar-20											◆ SCB - EVA provision - DBJV Estimation
581	SCB & Kiosk - FSI - DBJV Estimation	0		31-Mar-20											◆ SCB & Kiosk - FSI - DBJV Estimation
582	<b>Interface Activities</b>														
583	Cell 12 Backfilled for Access - DBJV Estimation (01-Sep-19)	0		07-Dec-19*											◆ Cell 12 Backfilled for Access - DBJV Estimation (01-Sep-19)
584	<b>CLP 11kV</b>														
585	CLP 11kV duct & draw pit - Ramp F Crossing	21	16-Dec-19*	11-Jan-20											CLP 11kV duct & draw pit - Ramp F Crossing
586	CLP 11kV duct & draw pit at SAR entrance - construction	21	13-Jan-20	08-Feb-20											CLP 11kV duct & draw pit at SAR entrance - construction
587	<b>Drainage</b>														
588	Drainage & outfall connection - SCB	24	07-Jan-20	06-Feb-20											Drainage & outfall connection - SCB
589	<b>Watermain</b>														
590	Watermain - SCB	21	14-Jan-20	10-Feb-20											Watermain - SCB
591	Watermain connection - SCB	22	11-Feb-20	06-Mar-20											Watermain connection - SCB
592	<b>LV/ELV</b>														
593	LV/ELV Provision - SCB & Kiosk	21	13-Jan-20	08-Feb-20											LV/ELV Provision - SCB & Kiosk
594	<b>Provision for FNO</b>														
595	FNO Access - East - Cell 13 Crossing	0	07-Dec-19												◆ FNO Access - East - Cell 13 Crossing
596	FNO Installation - East - SCB > Cell 13	38	07-Dec-19	23-Jan-20											FNO Installation - East - SCB > Cell 13
597	FNO Installation - East - Cell 13 Crossing	24	24-Jan-20	24-Feb-20											FNO Installation - East - Cell 13 Crossing
598	FNO Commissioning - SCB	25	25-Feb-20	24-Mar-20											FNO Commissioning - SCB
599	<b>Gully/Kerb/Pavement</b>														
600	Gully/Kerb - SCB	24	25-Feb-20	23-Mar-20											Gully/Kerb - SCB
601	Pavement - SCB	24	24-Mar-20	24-Apr-20											Pavement - SCB
602	<b>Remaining - East - SCB to C1</b>														
603	<b>Drainage</b>														
604	Drainage & outfall connection - SCB	24	06-Dec-19	06-Jan-20											Drainage & outfall connection - SCB
605	<b>Watermain</b>														
606	Watermain connection - SCB	30	20-Dec-19	30-Jan-20											Watermain connection - SCB
607	<b>CLP 132kV</b>														
608	132kV Cable Installation - East - C1 > SAR	24	07-Jan-20	06-Feb-20											132kV Cable Installation - East - C1 > SAR
609	<b>Provision for FNO</b>														
610	FNO Installation - East - C1 > SCB	30	17-Dec-19	24-Jan-20											FNO Installation - East - C1 > SCB
611	<b>Gully/Kerb/Pavement</b>														
612	Gully/Kerb - East - C1 > SCB	24	24-Jan-20	25-Feb-20											Gully/Kerb - East - C1 > SCB
613	Pavement - East - C1 > SCB	18	02-Mar-20	24-Mar-20											Pavement - East - C1 > SCB
614	<b>Remaining - East - Cell 13 to SVB</b>														
615	<b>Interface Activities</b>														
616	SCC Cell 13-9 Structure Completion - DBJV Estimation (01-Sep-19)	0		15-Nov-19											◆ SCC Cell 13-9 Structure Completion - DBJV Estimation (01-Sep-19)
617	SCC Site Setup demobilization	19	16-Nov-19	07-Dec-19											SCC Site Setup demobilization
618	SCC Structure Completion - DBJV Estimation (01-Sep-19)	0		29-Nov-19											◆ SCC Structure Completion - DBJV Estimation (01-Sep-19)
619	SCC Site Setup demobilization	24	30-Nov-19	30-Dec-19											SCC Site Setup demobilization
620	Cell 13 Backfilled - DBJV Estimation (01-Sep-19)	0		07-Dec-19*											◆ Cell 13 Backfilled - DBJV Estimation (01-Sep-19)
621	Amenities demobilization - DBJV Estimation	24	14-Jan-20	14-Feb-20											Amenities demobilization - DBJV Estimation
622	<b>CLP 11kV</b>														
623	CLP 11kV duct & draw pit - SCB > Cell 14	24	07-Dec-19	07-Jan-20											CLP 11kV duct & draw pit - SCB > Cell 14
624	CLP 11kV duct & draw pit - Cell 13 Crossing	24	08-Jan-20	07-Feb-20											CLP 11kV duct & draw pit - Cell 13 Crossing
625	<b>Drainage</b>														
626	Drainage & outfall connection - East - SAR > Cell 9	26	09-Dec-19	10-Jan-20											Drainage & outfall connection - East - SAR > Cell 9
627	Drainage & outfall connection - East - Cell 9 > 1	26	11-Jan-20	13-Feb-20											Drainage & outfall connection - East - Cell 9 > 1
628	Drainage & outfall connection - East - Amenities	24	14-Feb-20	12-Mar-20											Drainage & outfall connection - East - Amenities
629	<b>Gully/Kerb/Pavement</b>														
630	Gully/Kerb - East - SAR > Cell 9	24	11-Jan-20	11-Feb-20											Gully/Kerb - East - SAR > Cell 9
631	Gully/Kerb - East - Cell 9 > 1	24	14-Feb-20	12-Mar-20											Gully/Kerb - East - Cell 9 > 1
632	Gully/Kerb - East - Amenities	24	13-Mar-20	14-Apr-20											Gully/Kerb - East - Amenities
633	Pavement - East - SAR > Cell 9	24	14-Feb-20	12-Mar-20											Pavement - East - SAR > Cell 9
634	Pavement - East - Cell 9 > 1	24	13-Mar-20	14-Apr-20											Pavement - East - Cell 9 > 1
635	Pavement - East - Amenities	24	15-Apr-20	14-May-20											Pavement - East - Amenities

	Planned Bar
	Planned Milestone
	Key Date
	Progress Milestone
	Progress Bar

TMCLKL Northern Connection Sub-sea Tunnel Section  
Detailed Works Programme Rev. K  
Three Months Rolling Programme

Dragages · Bouygues Joint Venture 寶嘉 · 布依格聯營

Date	Revision	Checked	Approved
22-Dec-17	Rev.H	WYu	
05-Feb-18	Rev.IAC	WYu	
07-Mar-18	Rev.I	WYu	
04-Jun-18	Rev.J	WYu	
11-Nov-19	Rev.K	SPa	WYu
22-Jan-20	Rev.K1	SPa	WYu