

Appendix I

Impact Dolphin Monitoring Survey



Figure 1. Transect Line Layout in Northwest and Northeast Lantau Survey Areas

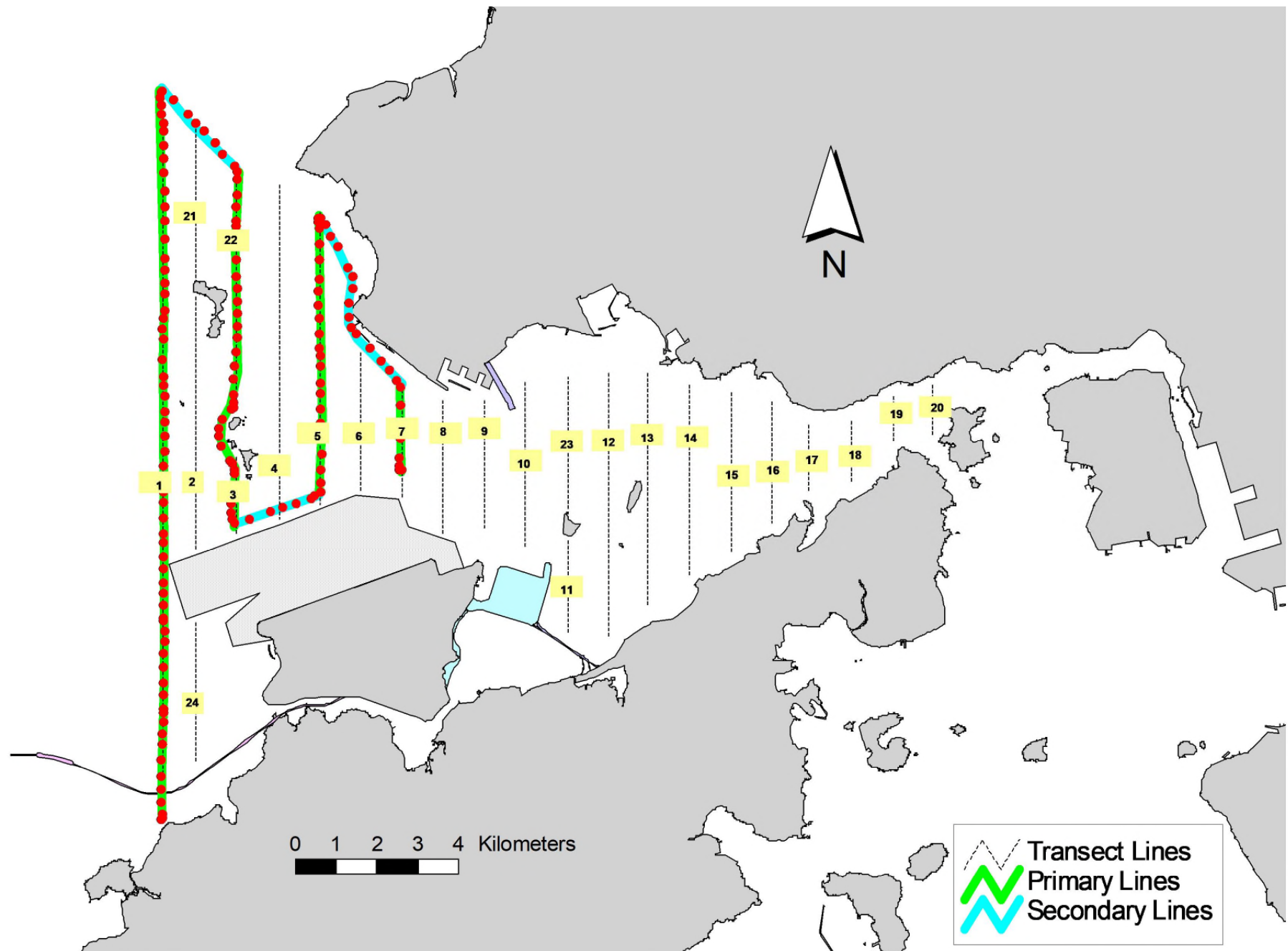


Figure 2. Survey Route on March 3rd, 2020

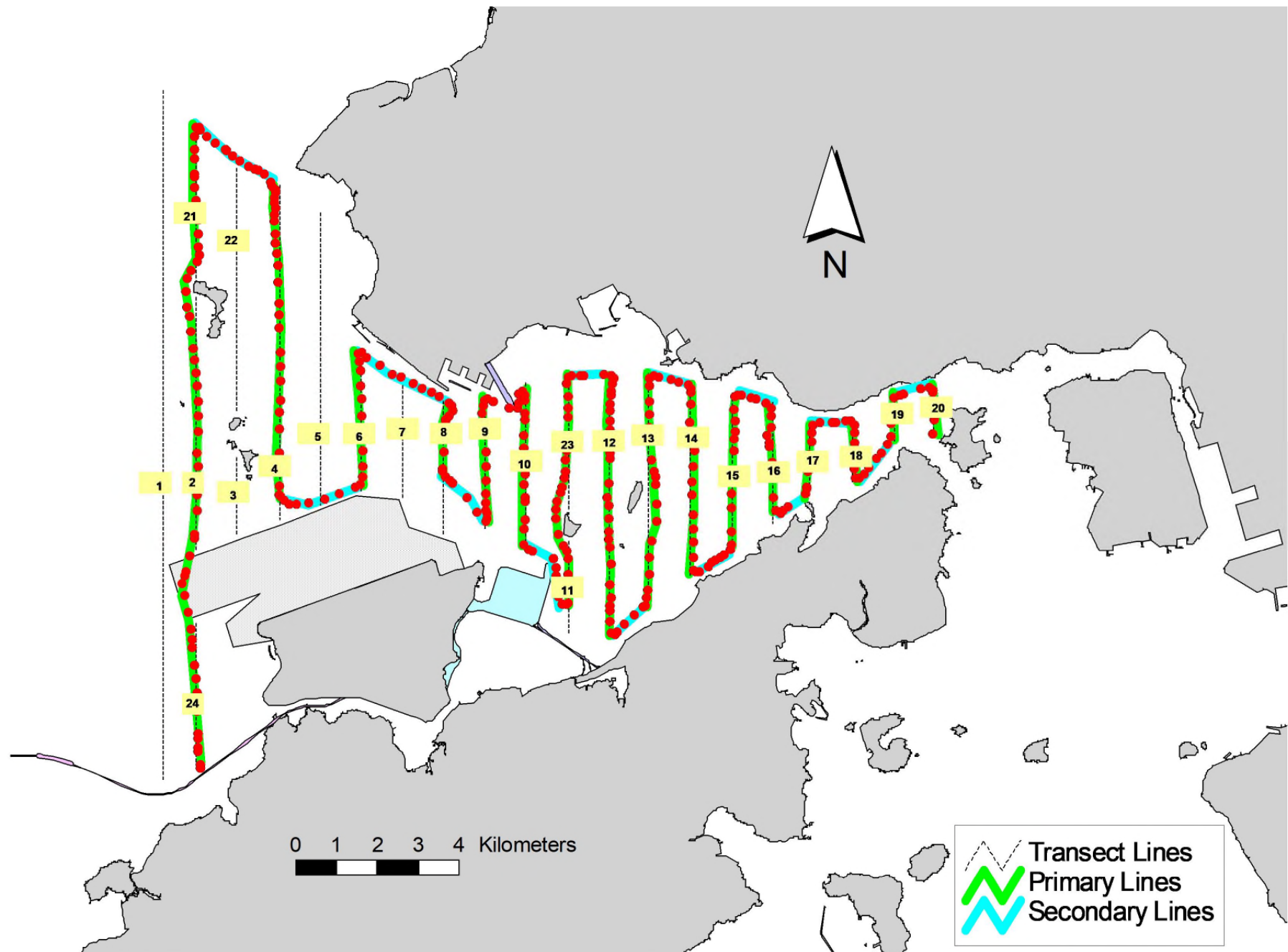


Figure 3. Survey Route on March 9th, 2020

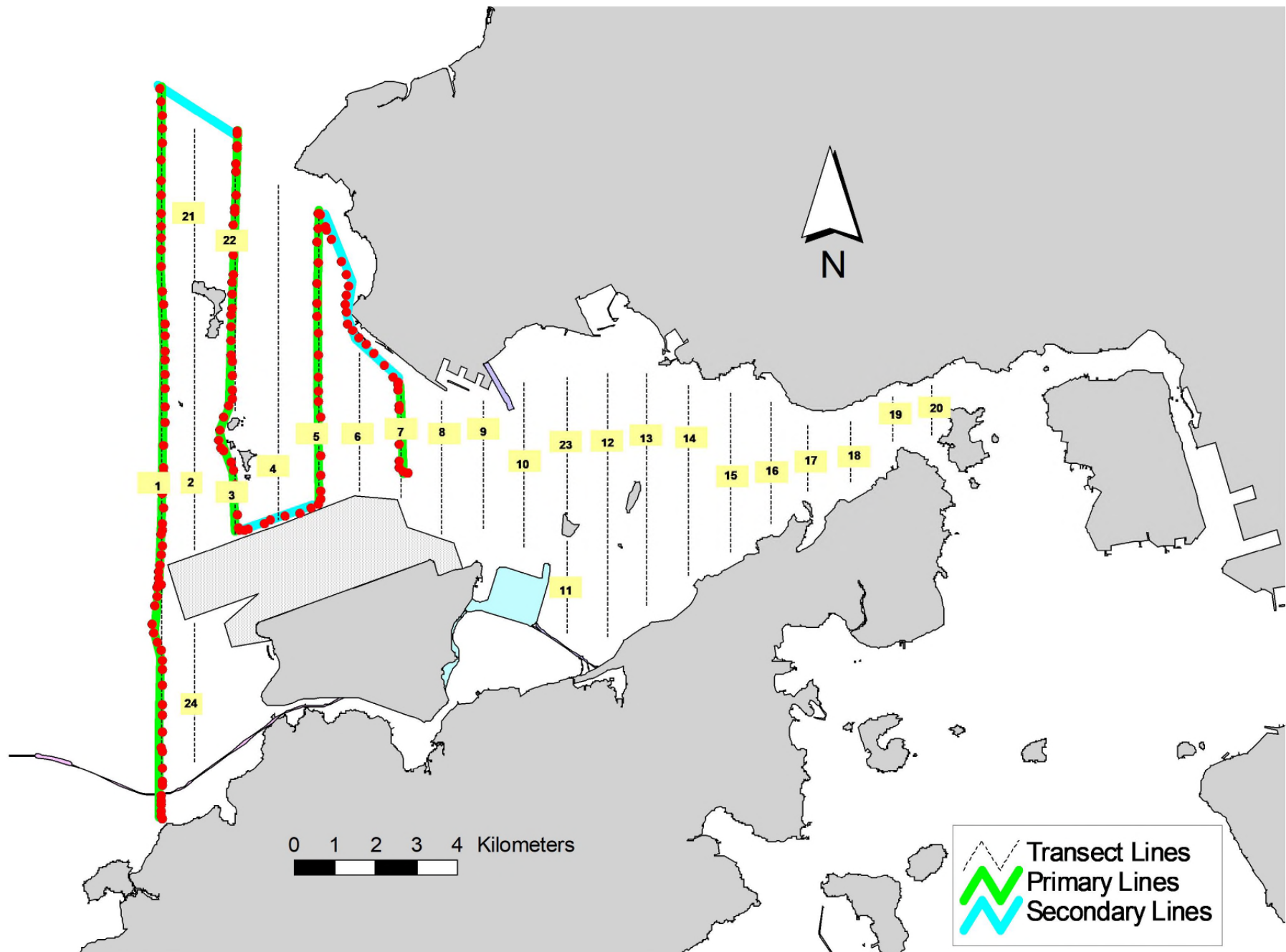


Figure 4. Survey Route on March 18th, 2020

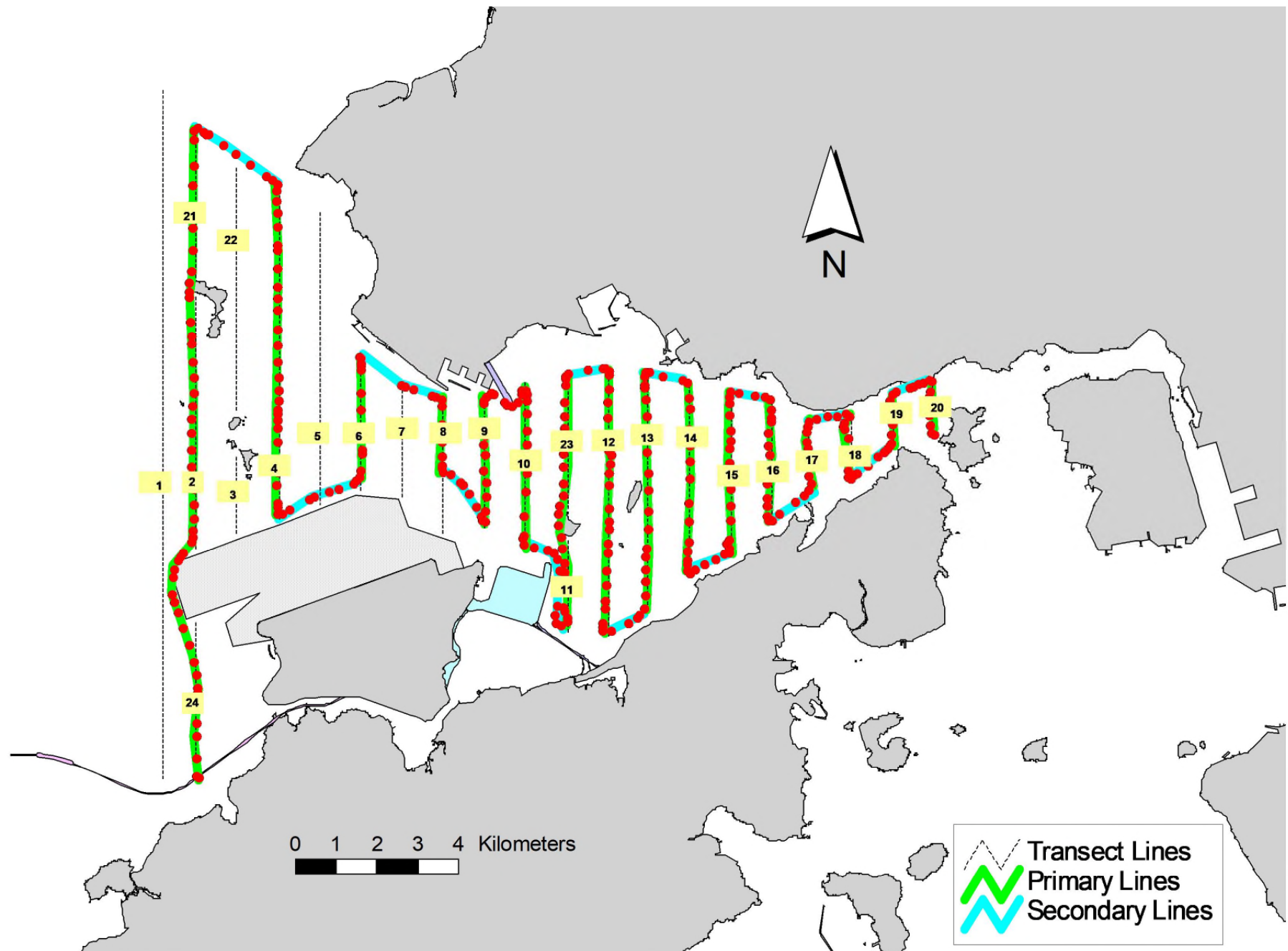


Figure 5. Survey Route on March 25th, 2020

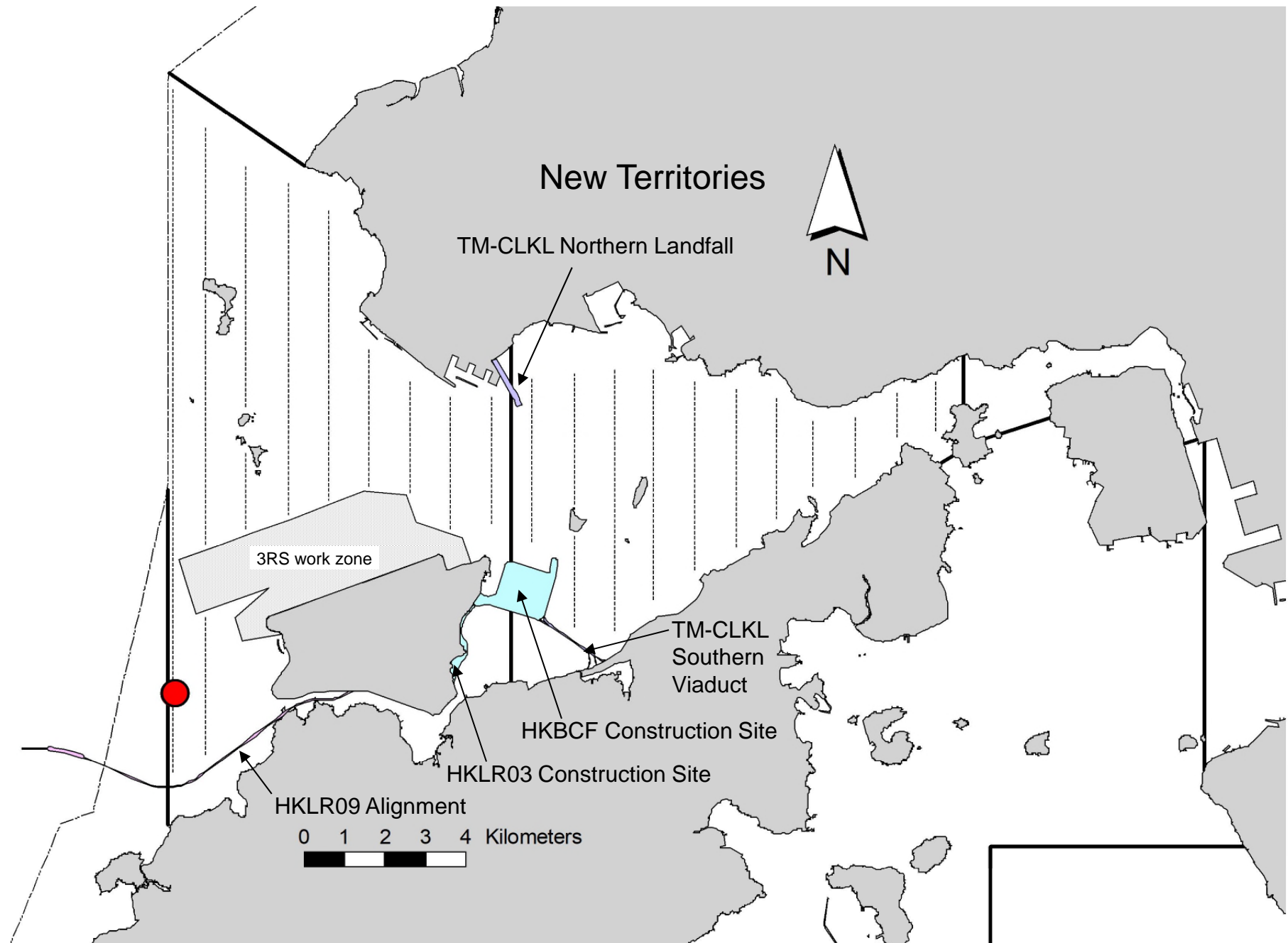


Figure 6. Distribution of Chinese White Dolphin Sightings during March 2020 Monitoring Surveys

Appendix I. TMCLKL Survey Effort Database (March 2020)

(Abbreviations: BEAU = Beaufort Sea State; P = Primary Line Effort; S = Secondary Line Effort)

DATE	AREA	BEAU	EFFORT	SEASON	VESSEL	TYPE	P/S
3-Mar-20	NW LANTAU	2	7.92	SPRING	STANDARD36826	TMCLKL	P
3-Mar-20	NW LANTAU	3	24.49	SPRING	STANDARD36826	TMCLKL	P
3-Mar-20	NW LANTAU	2	7.77	SPRING	STANDARD36826	TMCLKL	S
3-Mar-20	NW LANTAU	3	3.20	SPRING	STANDARD36826	TMCLKL	S
9-Mar-20	NW LANTAU	2	13.90	SPRING	STANDARD36826	TMCLKL	P
9-Mar-20	NW LANTAU	3	13.86	SPRING	STANDARD36826	TMCLKL	P
9-Mar-20	NW LANTAU	2	6.20	SPRING	STANDARD36826	TMCLKL	S
9-Mar-20	NW LANTAU	3	4.74	SPRING	STANDARD36826	TMCLKL	S
9-Mar-20	NE LANTAU	2	29.58	SPRING	STANDARD36826	TMCLKL	P
9-Mar-20	NE LANTAU	3	5.14	SPRING	STANDARD36826	TMCLKL	P
9-Mar-20	NE LANTAU	2	10.81	SPRING	STANDARD36826	TMCLKL	S
9-Mar-20	NE LANTAU	3	1.87	SPRING	STANDARD36826	TMCLKL	S
18-Mar-20	NW LANTAU	1	2.30	SPRING	STANDARD36826	TMCLKL	P
18-Mar-20	NW LANTAU	2	13.75	SPRING	STANDARD36826	TMCLKL	P
18-Mar-20	NW LANTAU	3	16.02	SPRING	STANDARD36826	TMCLKL	P
18-Mar-20	NW LANTAU	1	1.66	SPRING	STANDARD36826	TMCLKL	S
18-Mar-20	NW LANTAU	2	6.73	SPRING	STANDARD36826	TMCLKL	S
18-Mar-20	NW LANTAU	3	0.90	SPRING	STANDARD36826	TMCLKL	S
25-Mar-20	NE LANTAU	2	25.17	SPRING	STANDARD36826	TMCLKL	P
25-Mar-20	NE LANTAU	3	11.60	SPRING	STANDARD36826	TMCLKL	P
25-Mar-20	NE LANTAU	2	11.93	SPRING	STANDARD36826	TMCLKL	S
25-Mar-20	NE LANTAU	3	2.00	SPRING	STANDARD36826	TMCLKL	S
25-Mar-20	NW LANTAU	2	20.01	SPRING	STANDARD36826	TMCLKL	P
25-Mar-20	NW LANTAU	3	5.90	SPRING	STANDARD36826	TMCLKL	P
25-Mar-20	NW LANTAU	2	9.43	SPRING	STANDARD36826	TMCLKL	S
25-Mar-20	NW LANTAU	3	2.64	SPRING	STANDARD36826	TMCLKL	S

Appendix II. TMCLKL Chinese White Dolphin Sighting Database (March 2020)

(Abberviations: STG# = Sighting Number; HRD SZ = Dolphin Herd Size; BEAU = Beaufort Sea State; PSD = Perpendicular Distance; BOAT ASSOC. = Fishing Boat Association; P/S: Sighting Made on Primary/Secondary Lines)

DATE	STG #	TIME	HRD SZ	AREA	BEAU	PSD	EFFORT	TYPE	NORTHING	EASTING	SEASON	BOAT ASSOC.	P/S
3-Mar-20	1	1310	1	NW LANTAU	3	3	ON	TMCLKL	817341	804686	SPRING	NONE	P

Appendix III. Individual dolphins identified during TMCLKL monitoring surveys in (March 2020)

ID#	DATE	STG#	AREA
WL232	03/03/20	1	NW LANTAU



Appendix IV. Photographs of Identified Individual Dolphin in March 2020 (TMCLKL)