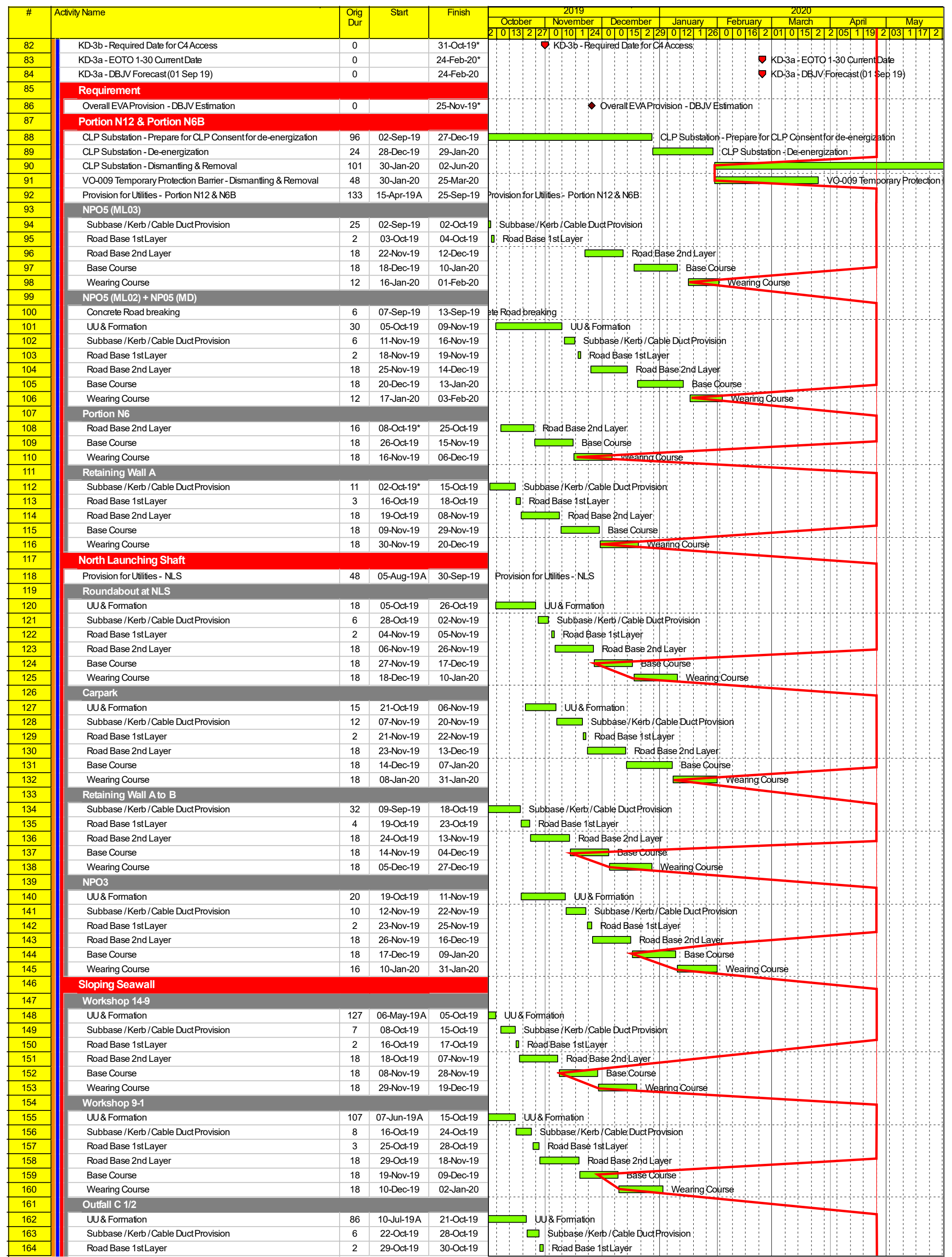
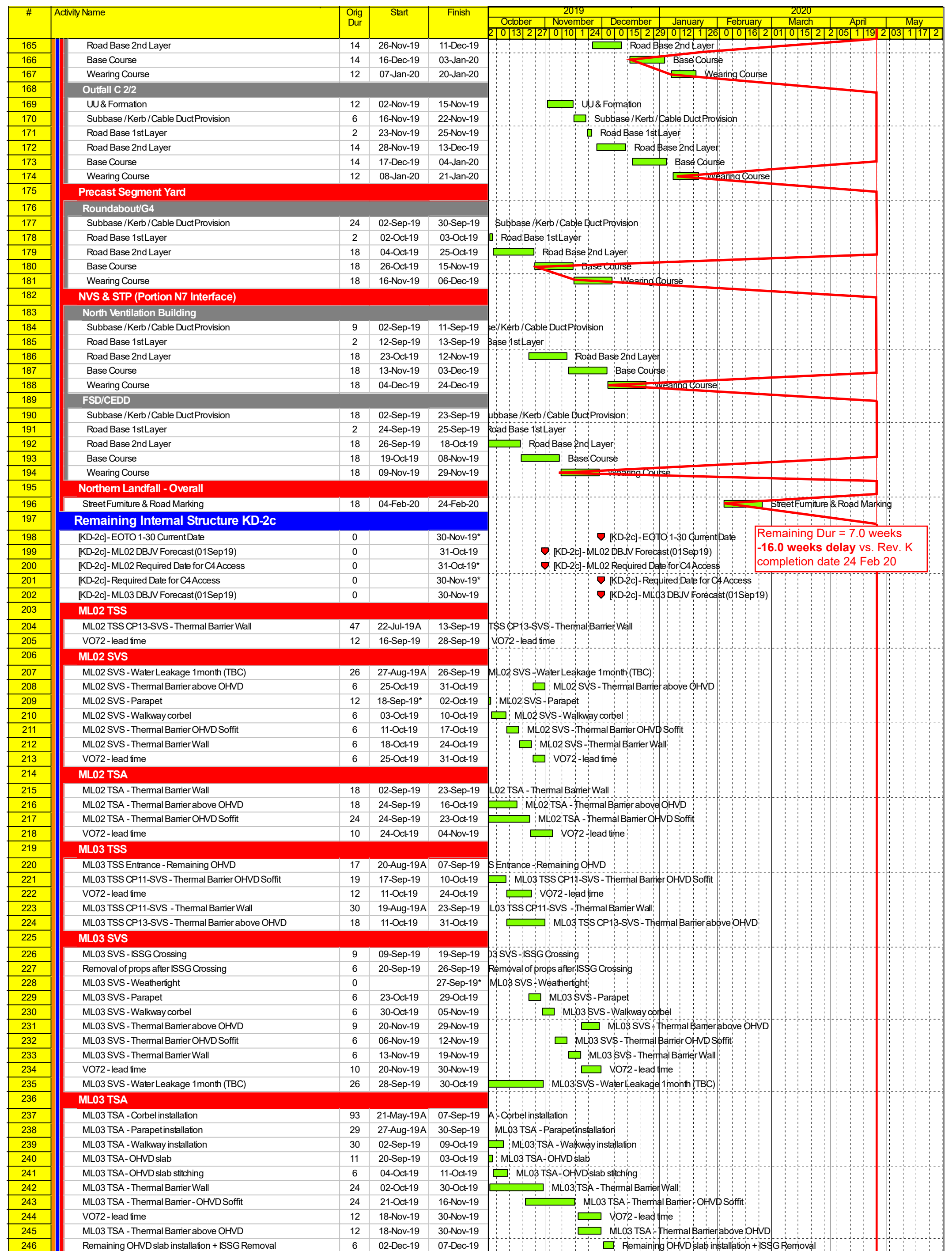


Appendix B

Construction Programme

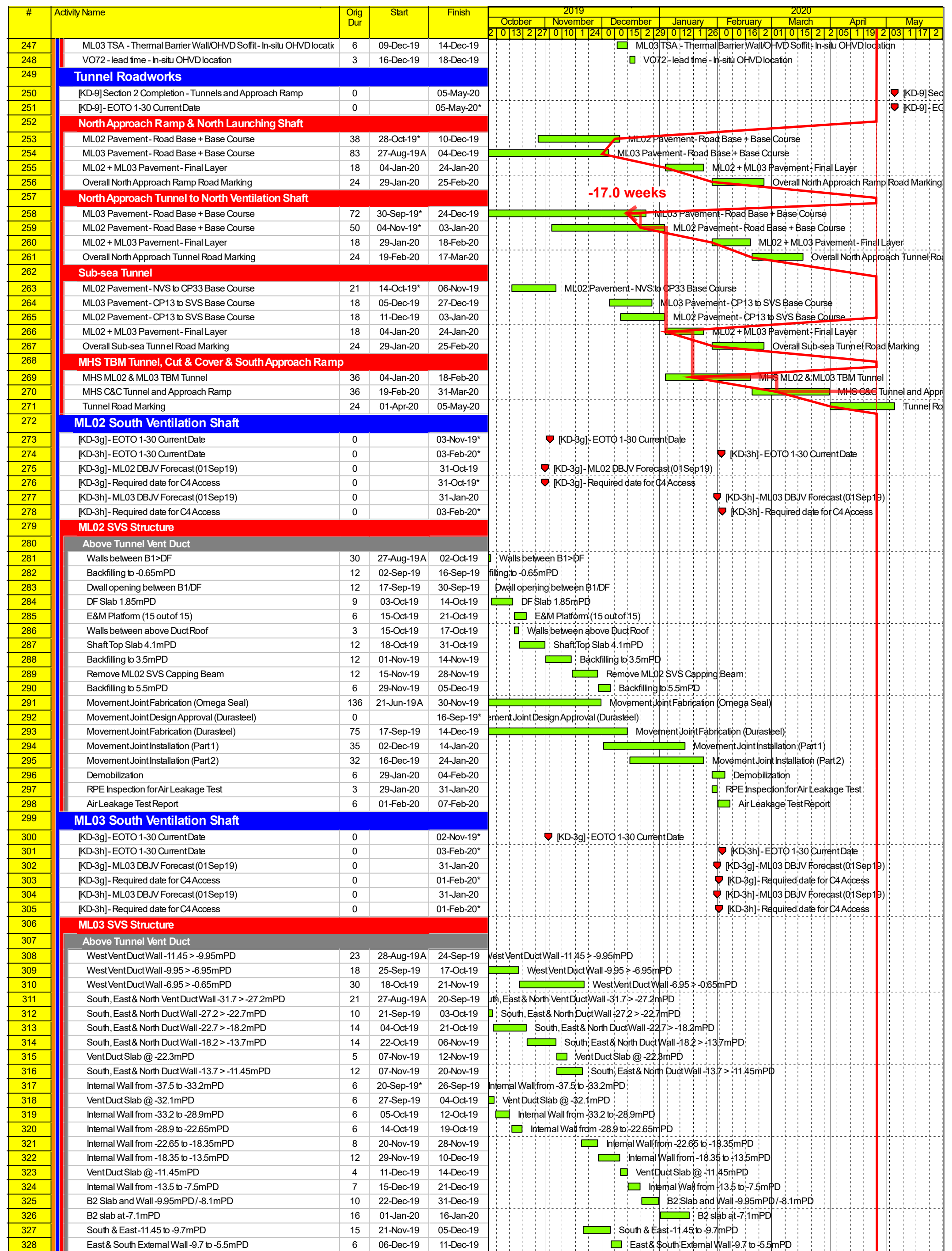




- Planned Bar
- ◆ Planned Milestone
- ♥ Key Date
- ◆ Progress Milestone
- Progress Bar

Dragages - Bouygues Joint Venture 寶嘉 - 布依格聯營

| Date | Revision | Checked | Approved |
|-----------|----------|---------|----------|
| 22-Dec-17 | Rev.H | WYu | |
| 05-Feb-18 | Rev.IAC | WYu | |
| 07-Mar-18 | Rev.I | WYu | |
| 04-Jun-18 | Rev.J | WYu | |
| 11-Nov-19 | Rev.K | SPa | WYu |
| 22-Jan-20 | Rev.K1 | SPa | WYu |

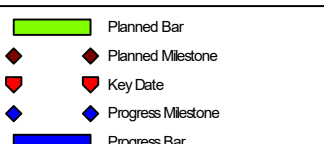
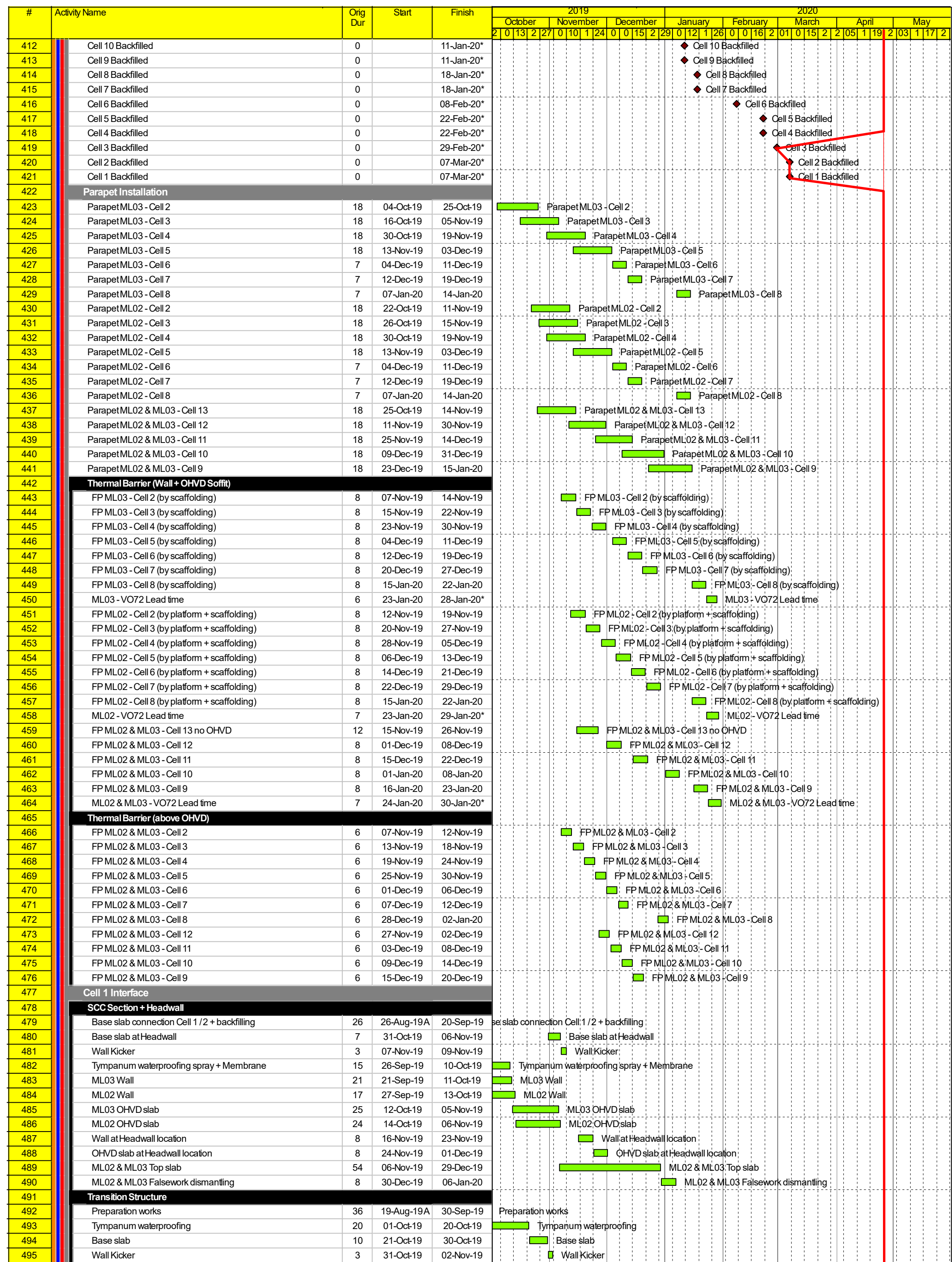


| | |
|--------------------------------------|--------------------|
| ■ | Planned Bar |
| ◆ | Planned Milestone |
| ♥ | Key Date |
| ◆ | Progress Milestone |
| ■ | Progress Bar |

TMCLKL Northern Connection Sub-sea Tunnel Section
 Detailed Works Programme Rev. K
 Three Months Rolling Programme



| Date | Revision | Checked | Approved |
|-----------|----------|---------|----------|
| 22-Dec-17 | Rev.H | WYu | |
| 05-Feb-18 | Rev.IAC | WYu | |
| 07-Mar-18 | Rev.I | WYu | |
| 04-Jun-18 | Rev.J | WYu | |
| 11-Nov-19 | Rev.K | SPa | WYu |
| 22-Jan-20 | Rev.K1 | SPa | WYu |



TMCLKL Northern Connection Sub-sea Tunnel Section
Detailed Works Programme Rev. K
Three Months Rolling Programme



| Date | Revision | Checked | Approved |
|-----------|----------|---------|----------|
| 22-Dec-17 | Rev.H | WYu | |
| 05-Feb-18 | Rev.IAC | WYu | |
| 07-Mar-18 | Rev.I | WYu | |
| 04-Jun-18 | Rev.J | WYu | |
| 11-Nov-19 | Rev.K | SPa | WYu |
| 22-Jan-20 | Rev.K1 | SPa | WYu |

| # | Activity Name | Orig Dur | Start | Finish | 2019 | | | | | 2020 | | | | | | | | | |
|-----|---|----------|------------|------------|---------|----------|----------|---------|----------|-------|-------|-----|----|----|----|----|----|----|--|
| | | | | | October | November | December | January | February | March | April | May | | | | | | | |
| | | | | | 20 | 27 | 04 | 11 | 18 | 25 | 02 | 09 | 16 | 23 | 30 | 06 | 13 | 20 | |
| 496 | Wall | 9 | 07-Nov-19 | 15-Nov-19 | | | | | | | | | | | | | | | |
| 497 | ML02 OHVD slab at Transition Structure | 3 | 02-Dec-19 | 04-Dec-19 | | | | | | | | | | | | | | | |
| 498 | ML03 OHVD slab at Transition Structure | 5 | 08-Dec-19 | 12-Dec-19 | | | | | | | | | | | | | | | |
| 499 | Top slab | 19 | 02-Dec-19 | 20-Dec-19 | | | | | | | | | | | | | | | |
| 500 | Internal Structure | | | | | | | | | | | | | | | | | | |
| 501 | Parapet installation (ML02 & ML03) | 12 | 07-Jan-20 | 18-Jan-20 | | | | | | | | | | | | | | | |
| 502 | FP ML02 & ML03 - Wall + OHVD Soffit + Above OHVD | 6 | 19-Jan-20 | 24-Jan-20 | | | | | | | | | | | | | | | |
| 503 | VO72 - Lead Time | 6 | 25-Jan-20 | 30-Jan-20* | | | | | | | | | | | | | | | |
| 504 | MHS Approach Ramp KD-3i | | | | | | | | | | | | | | | | | | |
| 505 | [KD-3i]-DBJV Forecast (01 Sep 19) | 0 | | 30-Nov-19 | | | | | | | | | | | | | | | |
| 506 | [KD-3i]-EOTO 1-32 Current Date | 0 | | 01-Dec-19* | | | | | | | | | | | | | | | |
| 507 | [KD-3i]-Required Date for C4 Access | 0 | | 31-Dec-19* | | | | | | | | | | | | | | | |
| 508 | South Approach Ramp | | | | | | | | | | | | | | | | | | |
| 509 | RC Structure | | | | | | | | | | | | | | | | | | |
| 510 | Waterproofing, Backfilling & Compaction | 217 | 11-Mar-19A | 30-Nov-19 | | | | | | | | | | | | | | | |
| 511 | Portion N11A,B, N13K,J - Handover | 0 | | 30-Nov-19 | | | | | | | | | | | | | | | |
| 512 | Internal Structure | | | | | | | | | | | | | | | | | | |
| 513 | SAR Parapet (East & West) Type SAR-1 to 3 | 40 | 02-Aug-19A | 18-Sep-19 | | | | | | | | | | | | | | | |
| 514 | Cell 14/15 Parapet (East & West) Type SAR-4 | 18 | 19-Sep-19 | 11-Oct-19 | | | | | | | | | | | | | | | |
| 515 | SAR Parapet (Middle) Type SAR-5 | 30 | 12-Oct-19 | 15-Nov-19 | | | | | | | | | | | | | | | |
| 516 | De-mobilization | 13 | 16-Nov-19 | 30-Nov-19 | | | | | | | | | | | | | | | |
| 517 | Sign Gantry | | | | | | | | | | | | | | | | | | |
| 518 | Procurement & Fabrication of Sign Gantry ML03 side | 28 | 05-Dec-19* | 09-Jan-20 | | | | | | | | | | | | | | | |
| 519 | Delivery of Sign Gantry ML03 side | 1 | 10-Jan-20 | 10-Jan-20 | | | | | | | | | | | | | | | |
| 520 | Installation of Sign Gantry ML03 side | 1 | 11-Jan-20 | 11-Jan-20 | | | | | | | | | | | | | | | |
| 521 | Procurement & Fabrication of Sign Gantry ML02 side | 48 | 18-Dec-19* | 18-Feb-20 | | | | | | | | | | | | | | | |
| 522 | Installation of Sign Gantry Beam ML02 side | 1 | 19-Feb-20 | 19-Feb-20 | | | | | | | | | | | | | | | |
| 523 | Installation of Sign Gantry Beam ML03 side | 1 | 20-Feb-20 | 20-Feb-20 | | | | | | | | | | | | | | | |
| 524 | Southern Landfall - Surface | | | | | | | | | | | | | | | | | | |
| 525 | [KD-3d]-EOTO 1-30 Current Date | 0 | | 08-Feb-20* | | | | | | | | | | | | | | | |
| 526 | [KD-3d]-DBJV Forecast (01 Sep 19) | 0 | | 08-Feb-20 | | | | | | | | | | | | | | | |
| 527 | [KD-3c]-EOTO 1-30 Current Date | 0 | | 14-May-20* | | | | | | | | | | | | | | | |
| 528 | [KD-3c]-DBJV Forecast (01 Sep 19) | 0 | | 14-May-20 | | | | | | | | | | | | | | | |
| 529 | HKBCF Seawall Modification (schedule TBC) | | | | | | | | | | | | | | | | | | |
| 530 | HKBCF Vertical Seawall - place Armour Rock | 81 | 26-Aug-19A | 30-Nov-19 | | | | | | | | | | | | | | | |
| 531 | UU / At-grade works | | | | | | | | | | | | | | | | | | |
| 532 | South Road & Drain | | | | | | | | | | | | | | | | | | |
| 533 | South Ventilation Building - Provision for FSI | | | | | | | | | | | | | | | | | | |
| 534 | Requirement | | | | | | | | | | | | | | | | | | |
| 535 | SVB - FNO completion - DBJV Estimation | 0 | | 06-Feb-20 | | | | | | | | | | | | | | | |
| 536 | SVB - Water Connection - DBJV Estimation | 0 | | 07-Feb-20 | | | | | | | | | | | | | | | |
| 537 | SVB - EVA provision - DBJV Estimation | 0 | | 20-Feb-20 | | | | | | | | | | | | | | | |
| 538 | SVB - FSI - DBJV Estimation | 0 | | 02-Mar-20 | | | | | | | | | | | | | | | |
| 539 | CLP 11kV | | | | | | | | | | | | | | | | | | |
| 540 | CLP 11kV duct & draw pit - West - Cell 9>1 | 51 | 18-Jul-19A | 16-Sep-19 | | | | | | | | | | | | | | | |
| 541 | CLP 11kV duct & draw pit - West - Cell 1>SVS | 24 | 17-Sep-19 | 16-Oct-19 | | | | | | | | | | | | | | | |
| 542 | CLP 11kV duct & draw pit - SVS / SVB | 24 | 17-Oct-19 | 13-Nov-19 | | | | | | | | | | | | | | | |
| 543 | Drainage | | | | | | | | | | | | | | | | | | |
| 544 | Drainage & outfall connection - West - SVS / SVB | 30 | 20-Aug-19A | 24-Sep-19 | | | | | | | | | | | | | | | |
| 545 | Drainage & outfall connection - West - Cell 1>SVS | 30 | 25-Sep-19 | 31-Oct-19 | | | | | | | | | | | | | | | |
| 546 | Drainage & outfall connection - West - SAR>Cell 9 | 30 | 01-Nov-19 | 05-Dec-19 | | | | | | | | | | | | | | | |
| 547 | Drainage & outfall connection - West - Cell 9>1 | 30 | 06-Dec-19 | 13-Jan-20 | | | | | | | | | | | | | | | |
| 548 | Watermain | | | | | | | | | | | | | | | | | | |
| 549 | Watermain - West - SVS/SVB | 24 | 02-Oct-19* | 30-Oct-19 | | | | | | | | | | | | | | | |
| 550 | Watermain - West - Cell 1>SVS | 18 | 01-Nov-19 | 21-Nov-19 | | | | | | | | | | | | | | | |
| 551 | Watermain - West - SAR>Cell 9 | 24 | 22-Nov-19 | 19-Dec-19 | | | | | | | | | | | | | | | |
| 552 | Watermain - West - Cell 9>1 | 22 | 20-Dec-19 | 17-Jan-20 | | | | | | | | | | | | | | | |
| 553 | Watermain - Connection | 15 | 18-Jan-20 | 07-Feb-20 | | | | | | | | | | | | | | | |
| 554 | LV/ELV | | | | | | | | | | | | | | | | | | |
| 555 | LV/ELV Duct - West - SVS/SVB | 24 | 02-Oct-19* | 30-Oct-19 | | | | | | | | | | | | | | | |
| 556 | LV/ELV Duct - West - Cell 1>SVS | 24 | 31-Oct-19 | 27-Nov-19 | | | | | | | | | | | | | | | |
| 557 | LV/ELV Duct - West - Cell 9>1 | 24 | 28-Nov-19 | 27-Dec-19 | | | | | | | | | | | | | | | |
| 558 | LV/ELV Duct - West - SAR>Cell 9 | 21 | 28-Dec-19 | 22-Jan-20 | | | | | | | | | | | | | | | |
| 559 | Provision for FNO | | | | | | | | | | | | | | | | | | |
| 560 | FNO Installation - SVS/SVB | 18 | 02-Oct-19 | 23-Oct-19 | | | | | | | | | | | | | | | |
| 561 | FNO Installation - Cell 1>SVS | 18 | 31-Oct-19 | 20-Nov-19 | | | | | | | | | | | | | | | |
| 562 | FNO Installation - SAR>Cell 9 | 21 | 28-Nov-19 | 21-Dec-19 | | | | | | | | | | | | | | | |
| 563 | FNO Installation - Cell 9>1 | 20 | 23-Dec-19 | 17-Jan-20 | | | | | | | | | | | | | | | |
| 564 | FNO Commissioning for SVB | 14 | 18-Jan-20 | 06-Feb-20 | | | | | | | | | | | | | | | |
| 565 | Gully / Kerb / Pavement | | | | | | | | | | | | | | | | | | |
| 566 | Gully / Kerb - West - SVS/SVB | 24 | 24-Oct-19* | 20-Nov-19 | | | | | | | | | | | | | | | |
| 567 | Gully / Kerb - West - Cell 1>SVS | 24 | 21-Nov-19 | 18-Dec-19 | | | | | | | | | | | | | | | |
| 568 | Gully / Kerb - West - Cell 9>1 | 24 | 23-Dec-19 | 22-Jan-20 | | | | | | | | | | | | | | | |
| 569 | Gully / Kerb - West - SAR>Cell 9 | 24 | 23-Jan-20 | 22-Feb-20 | | | | | | | | | | | | | | | |
| 570 | Pavement - West - SVS/SVB | 24 | 21-Nov-19 | 18-Dec-19 | | | | | | | | | | | | | | | |
| 571 | Pavement - West - Cell 1>SVS | 24 | 19-Dec-19 | 18-Jan-20 | | | | | | | | | | | | | | | |
| 572 | Pavement - West - Cell 9>1 | 24 | 23-Jan-20 | 22-Feb-20 | | | | | | | | | | | | | | | |
| 573 | Pavement - West - SAR>Cell 9 | 24 | 24-Feb-20 | 21-Mar-20 | | | | | | | | | | | | | | | |
| 574 | Satellite Control Building and Kiosk - Provision for FSI | | | | | | | | | | | | | | | | | | |
| 575 | Requirement | | | | | | | | | | | | | | | | | | |
| 576 | SCB - 11kV Route Provision - DBJV Estimation | 0 | | 08-Feb-20 | | | | | | | | | | | | | | | |
| 577 | SCB - Provision for ELV / Power Cable - DBJV Estimation | 0 | | 08-Feb-20 | | | | | | | | | | | | | | | |
| 578 | SCB - Water Connection - DBJV Estimation | 0 | | 06-Mar-20 | | | | | | | | | | | | | | | |

- Planned Bar
- ◆ Planned Milestone
- ♥ Key Date
- ◆ Progress Milestone
- Progress Bar



Dragages - Bouygues Joint Venture 寶嘉 - 布依格聯營

| Date | Revision | Checked | Approved |
|-----------|----------|---------|----------|
| 22-Dec-17 | Rev.H | WYu | |
| 05-Feb-18 | Rev.IAC | WYu | |
| 07-Mar-18 | Rev.I | WYu | |
| 04-Jun-18 | Rev.J | WYu | |
| 11-Nov-19 | Rev.K | SPa | WYu |
| 22-Jan-20 | Rev.K1 | SPa | WYu |

