

Appendix G

Impact Air Quality Monitoring Results

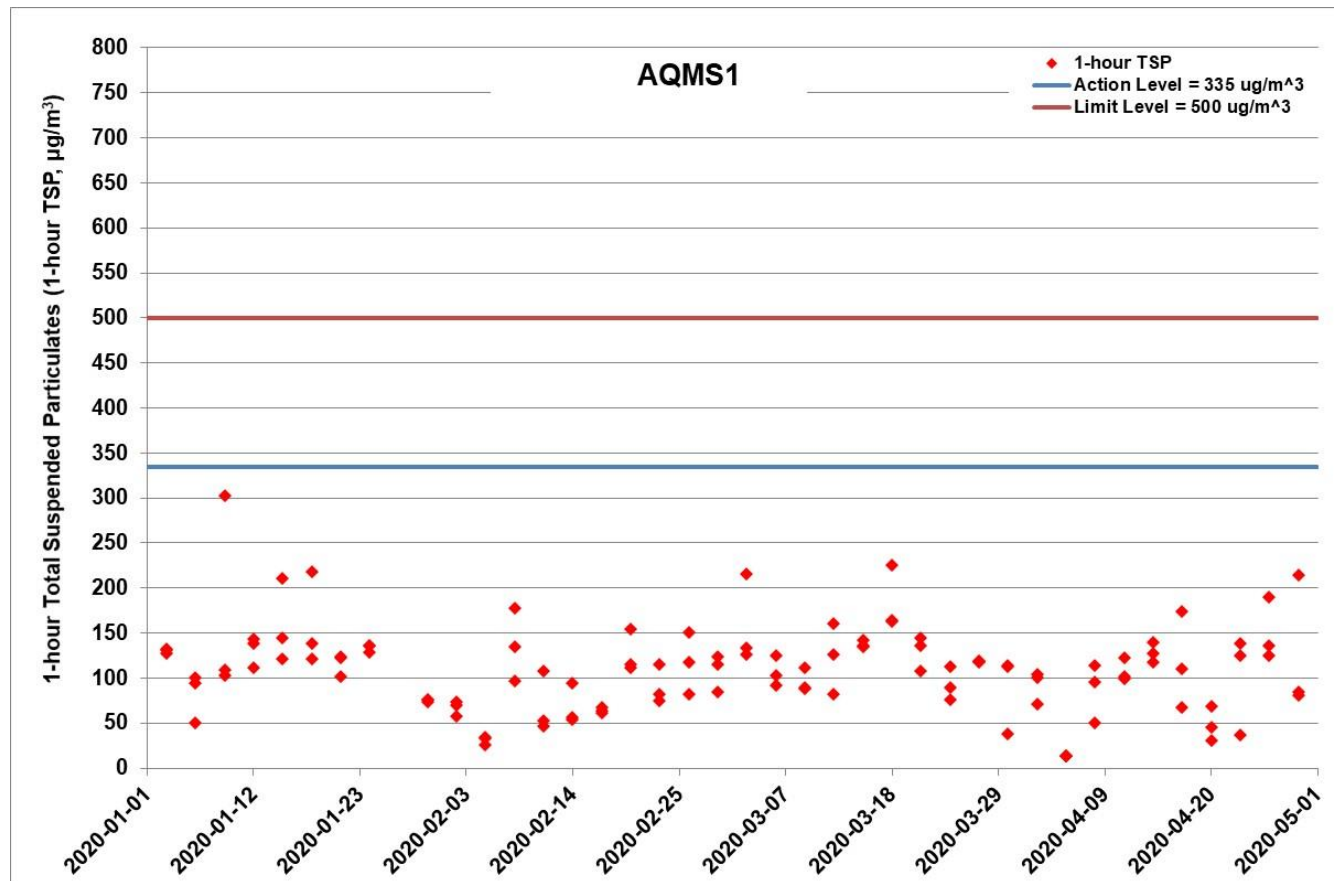


Figure G.1 Impact Monitoring – 1-hour Total Suspended Particulates ($\mu\text{g}/\text{m}^3$) at AQMS1 between 1 January 2020 and 30 April 2020 during impact monitoring period. The weather conditions during the monitoring period varied from sunny to cloudy. Major land-based construction activities included: Road and Drainage Works at Northern Landfall and Southern Landfall, UU installation at Northern Landfall and Southern Landfall and Fireboard installation in Tunnel (1/1/2020 – 30/4/2020)

Ref: 0212330_Impact AQM graphs_April 2020.xlsx



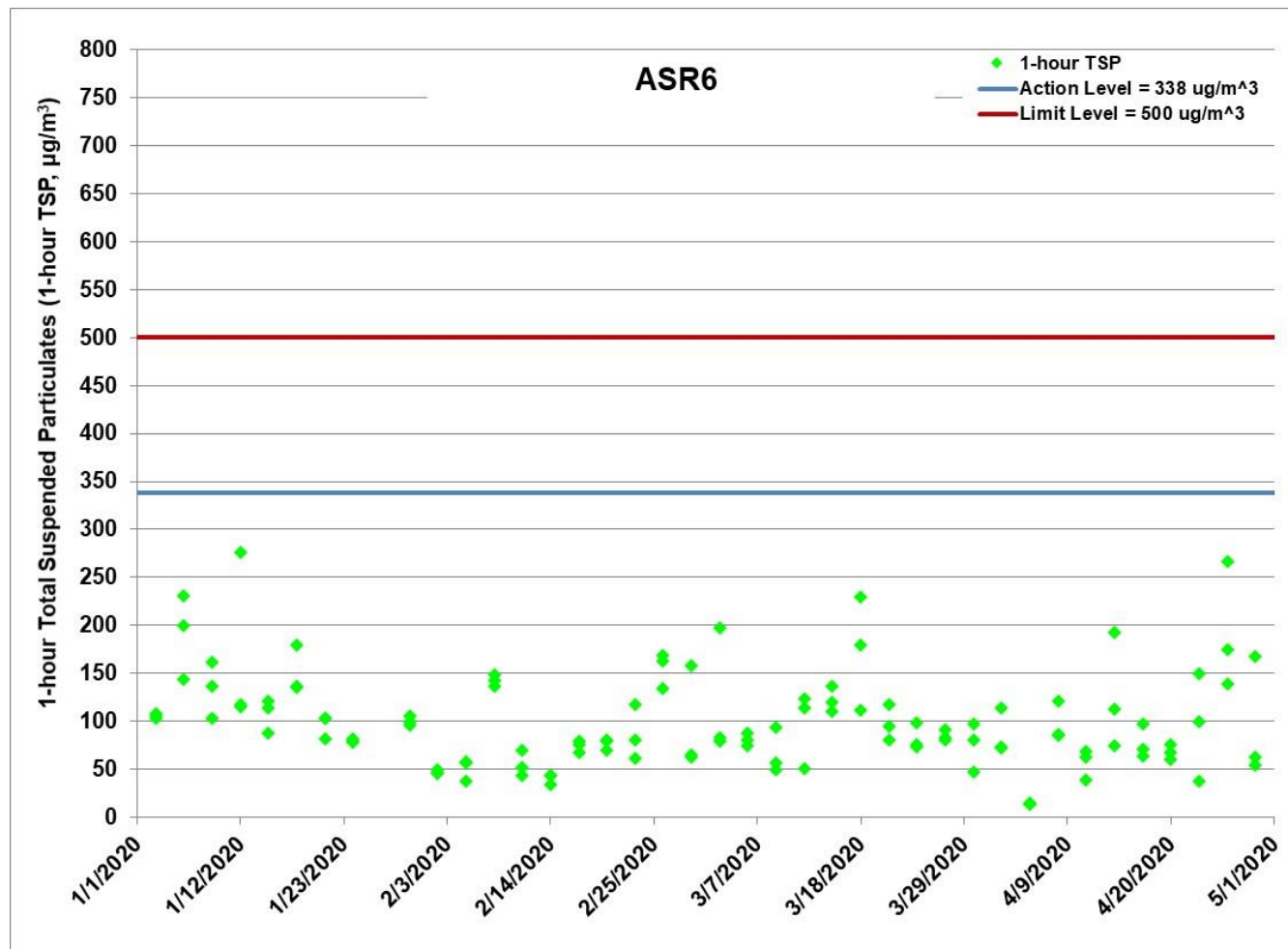


Figure G.2 Impact Monitoring – 1-hour Total Suspended Particulates ($\mu\text{g}/\text{m}^3$) at ASR6 between 1 January 2020 and 30 April 2020 during impact monitoring period. The weather conditions during the monitoring period varied from sunny to cloudy. Major land-based construction activities included: Road and Drainage Works at Northern Landfall and Southern Landfall, UU installation at Northern Landfall and Southern Landfall and Fireboard installation in Tunnel (1/1/2020 – 30/4/2020)

Ref: 0212330_Impact AQM graphs_April 2020.xlsx



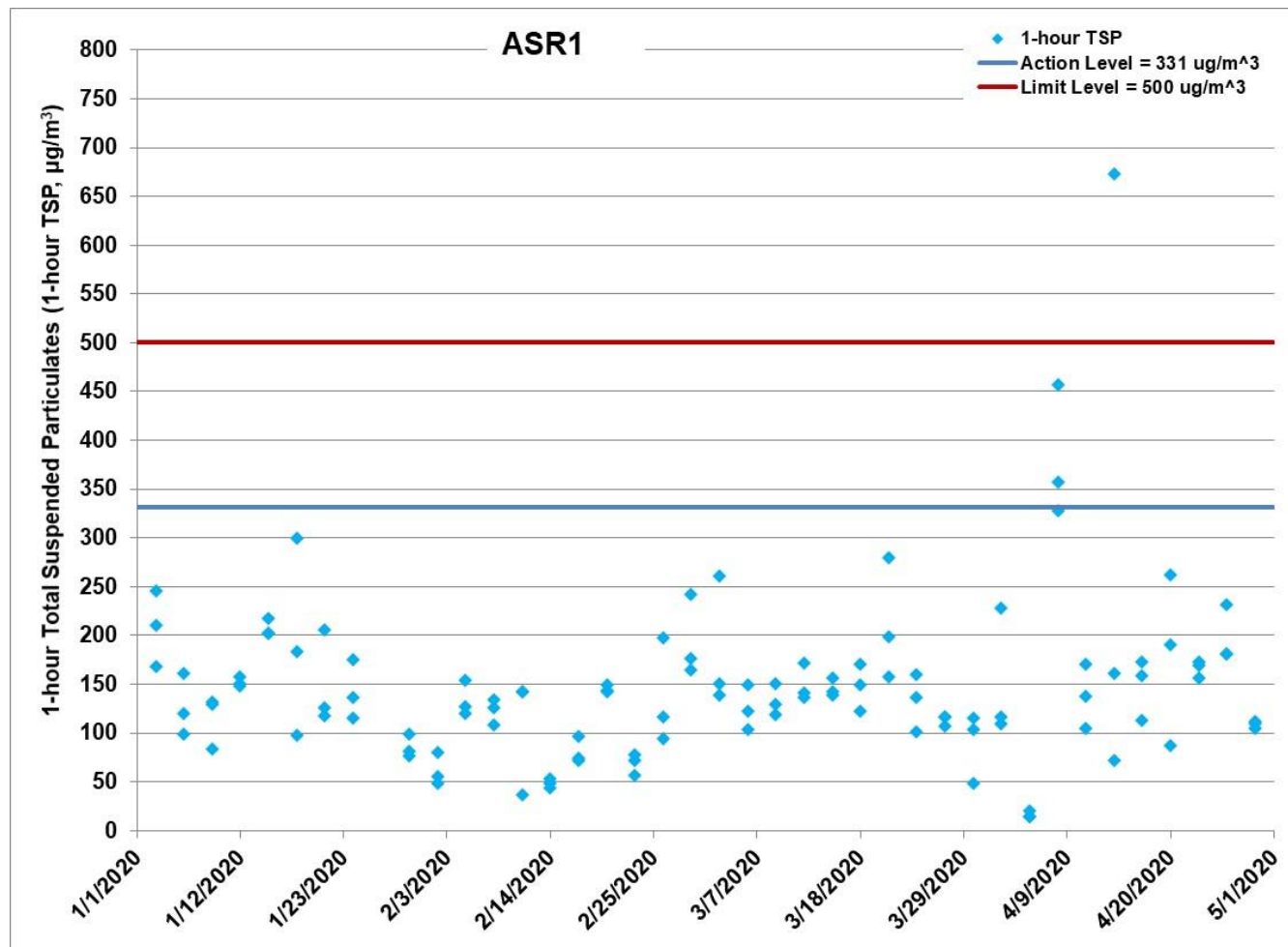


Figure G.3 Impact Monitoring – 1-hour Total Suspended Particulates ($\mu\text{g}/\text{m}^3$) at ASR1 between 1 January 2020 and 30 April 2020 during impact monitoring period. The weather conditions during the monitoring period varied from sunny to cloudy. Major land-based construction activities included: Road and Drainage Works at Northern Landfall and Southern Landfall, UU installation at Northern Landfall and Southern Landfall and Fireboard installation in Tunnel (1/1/2020 – 30/4/2020)

Ref: 0212330_Impact AQM graphs_April 2020.xlsx



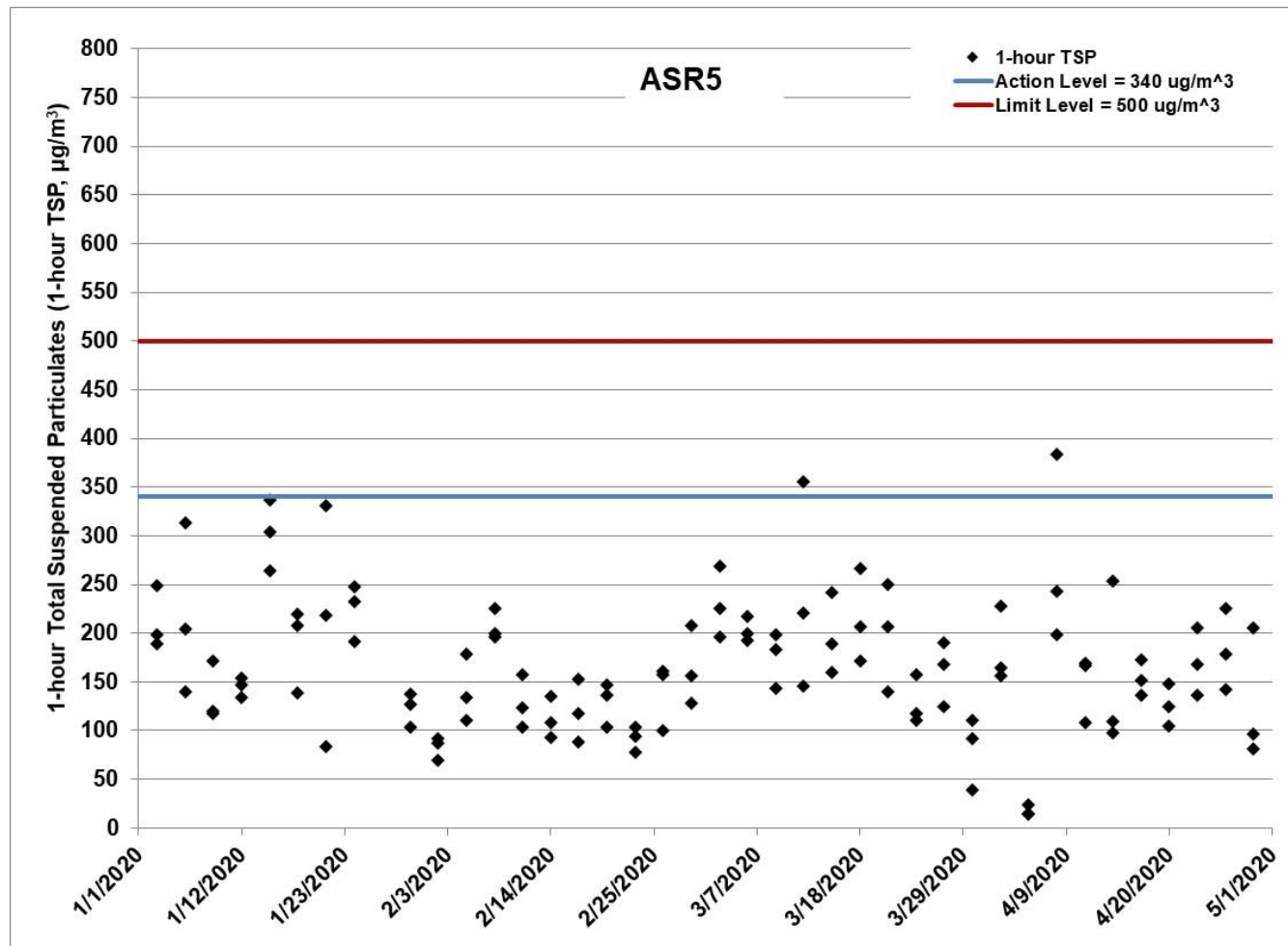


Figure G.4 Impact Monitoring - 1-hour Total Suspended Particulates ($\mu\text{g}/\text{m}^3$) at ASR5 between 1 January 2020 and 30 April 2020 during impact monitoring period. The weather conditions during the monitoring period varied from sunny to cloudy. Major land-based construction activities included: Road and Drainage Works at Northern Landfall and Southern Landfall, UU installation at Northern Landfall and Southern Landfall and Fireboard installation in Tunnel (1/1/2020 - 30/4/2020)

Ref: 0212330_Impact AQM graphs_April 2020.xlsx



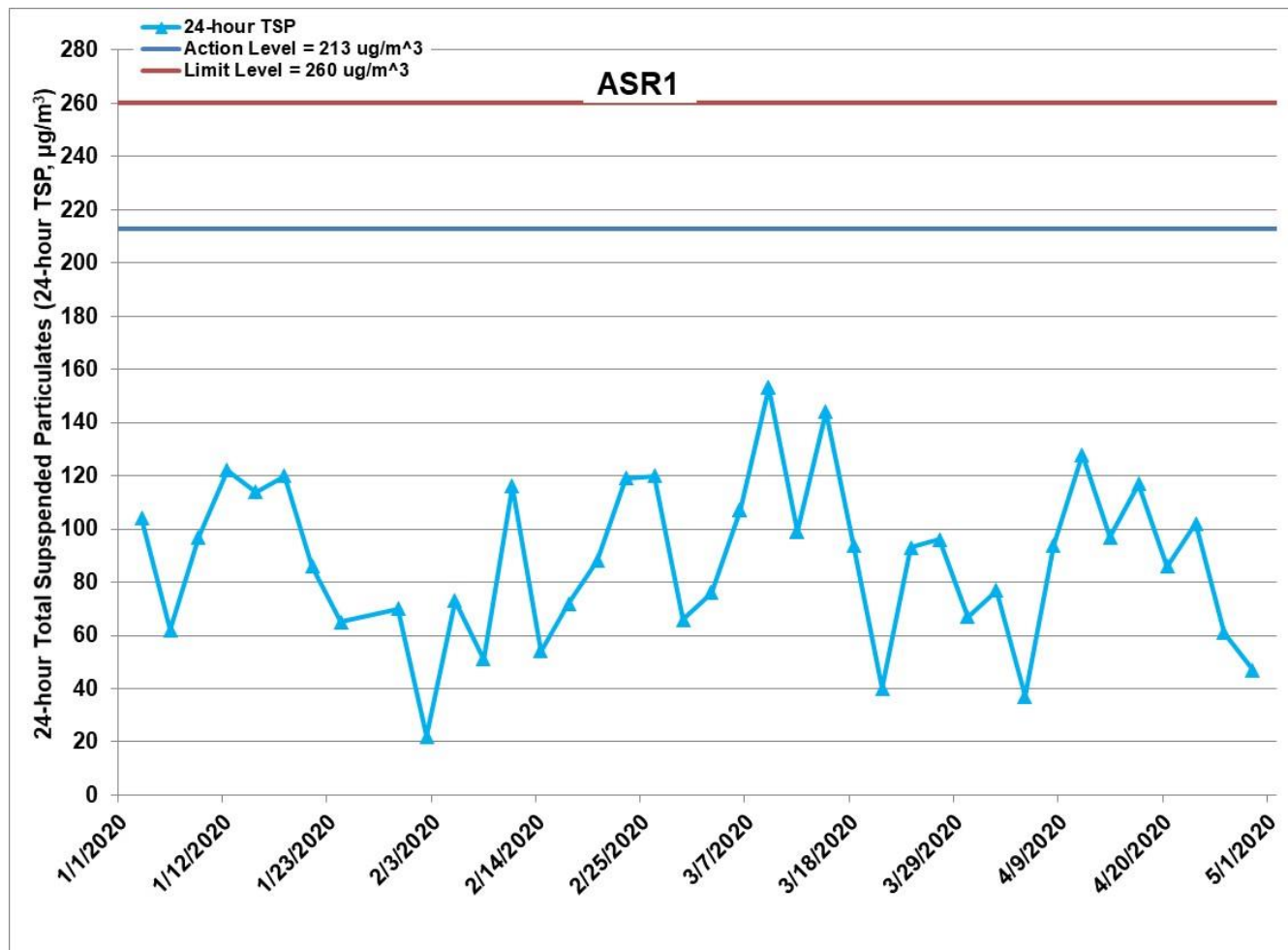


Figure G.6 Impact Monitoring – 24-hour Total Suspended Particulates ($\mu\text{g}/\text{m}^3$) at ASR1 between 1 January 2020 and 30 April 2020 during impact monitoring period. The weather conditions during the monitoring period varied from sunny to cloudy. Major land-based construction activities included: Road and Drainage Works at Northern Landfall and Southern Landfall, UU installation at Northern Landfall and Southern Landfall and Fireboard installation in Tunnel (1/1/2020 – 30/4/2020)

Ref: 0212330_Impact AQM graphs_April 2020.xlsx



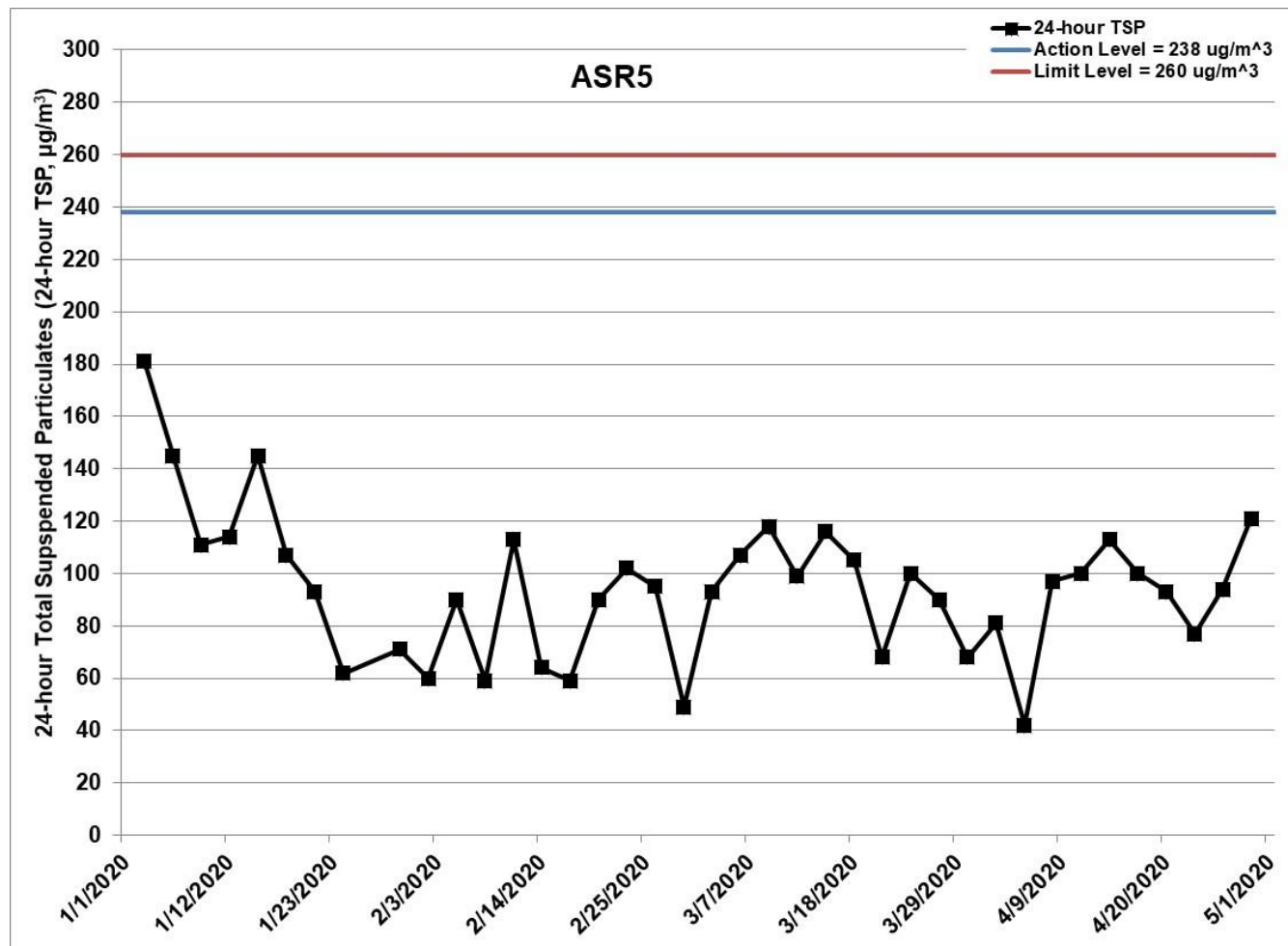


Figure G.7 Impact Monitoring – 24-hour Total Suspended Particulates ($\mu\text{g}/\text{m}^3$) at ASR5 between 1 January 2020 and 30 April 2020 during impact monitoring period. The weather conditions during the monitoring period varied from sunny to cloudy. Major land-based construction activities included: Road and Drainage Works at Northern Landfall and Southern Landfall, UU installation at Northern Landfall and Southern Landfall and Fireboard installation in Tunnel (1/1/2020 – 30/4/2020)

Ref: 0212330_Impact AQM graphs_April 2020.xlsx



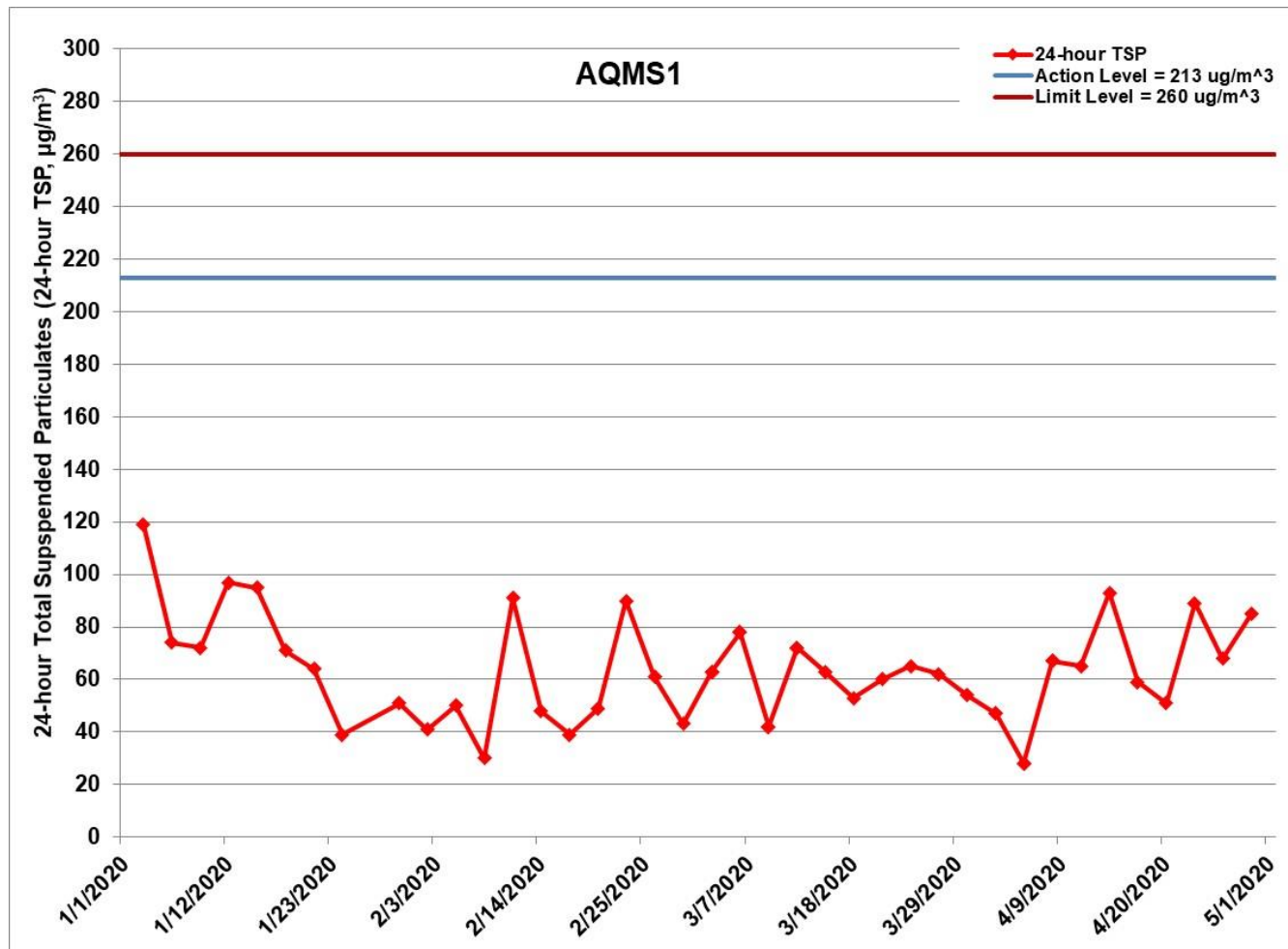


Figure G.8 Impact Monitoring – 24-hour Total Suspended Particulates ($\mu\text{g}/\text{m}^3$) at AQMS1 between 1 January 2020 and 30 April 2020 during impact monitoring period. The weather conditions during the monitoring period varied from sunny to cloudy. Major land-based construction activities included: Road and Drainage Works at Northern Landfall and Southern Landfall, UU installation at Northern Landfall and Southern Landfall and Fireboard installation in Tunnel (1/1/2020 – 30/4/2020)

Ref: 0212330_Impact AQM graphs_April 2020.xlsx



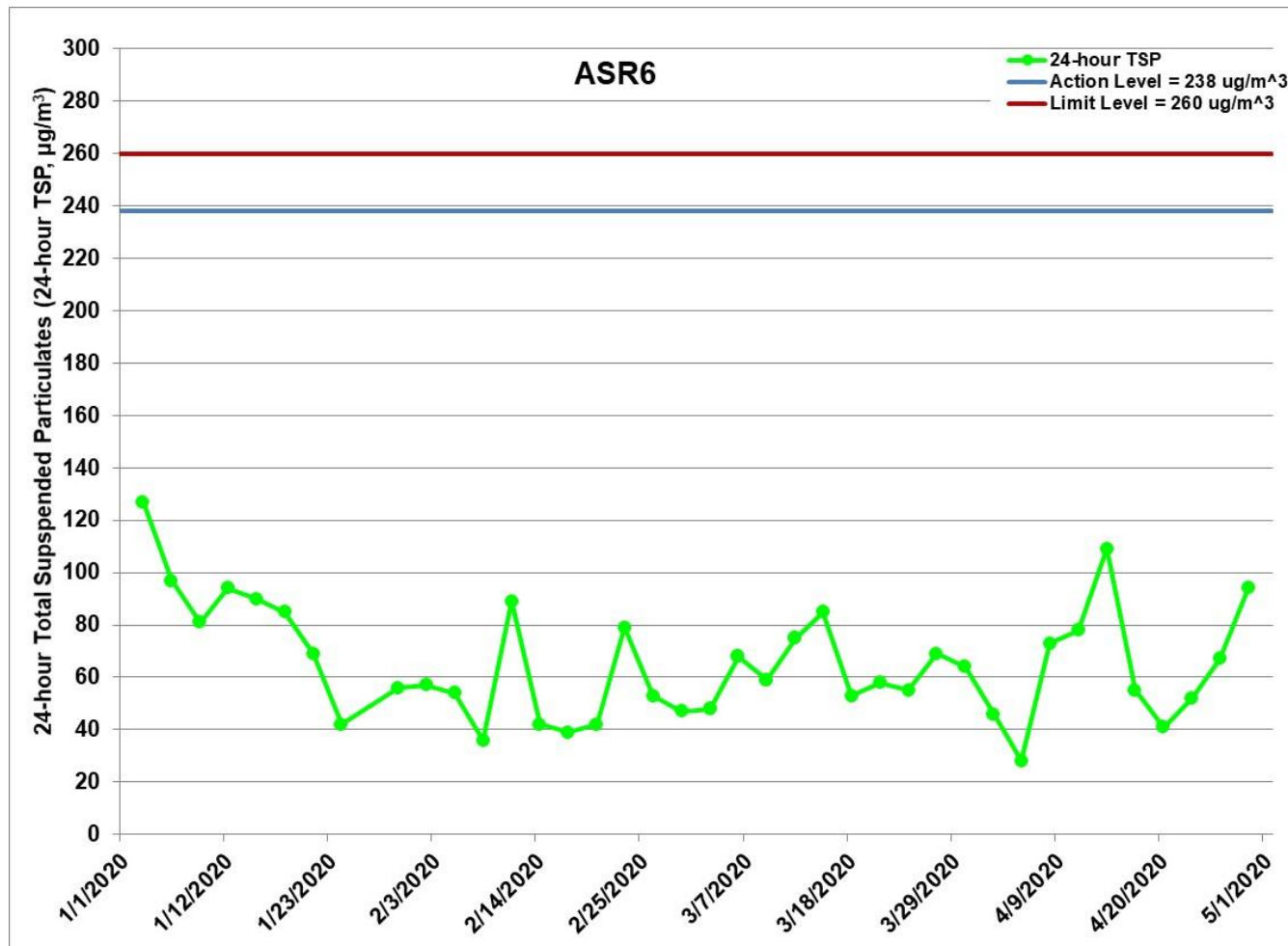


Figure G.9 Impact Monitoring – 24-hour Total Suspended Particulates ($\mu\text{g}/\text{m}^3$) at ASR6 between 1 January 2020 and 30 April 2020 during impact monitoring period. The weather conditions during the monitoring period varied from sunny to cloudy. Major land-based construction activities included: Road and Drainage Works at Northern Landfall and Southern Landfall, UU installation at Northern Landfall and Southern Landfall and Fireboard installation in Tunnel (1/1/2020 – 30/4/2020)

Ref: 0212330_Impact AQM graphs_April 2020.xlsx



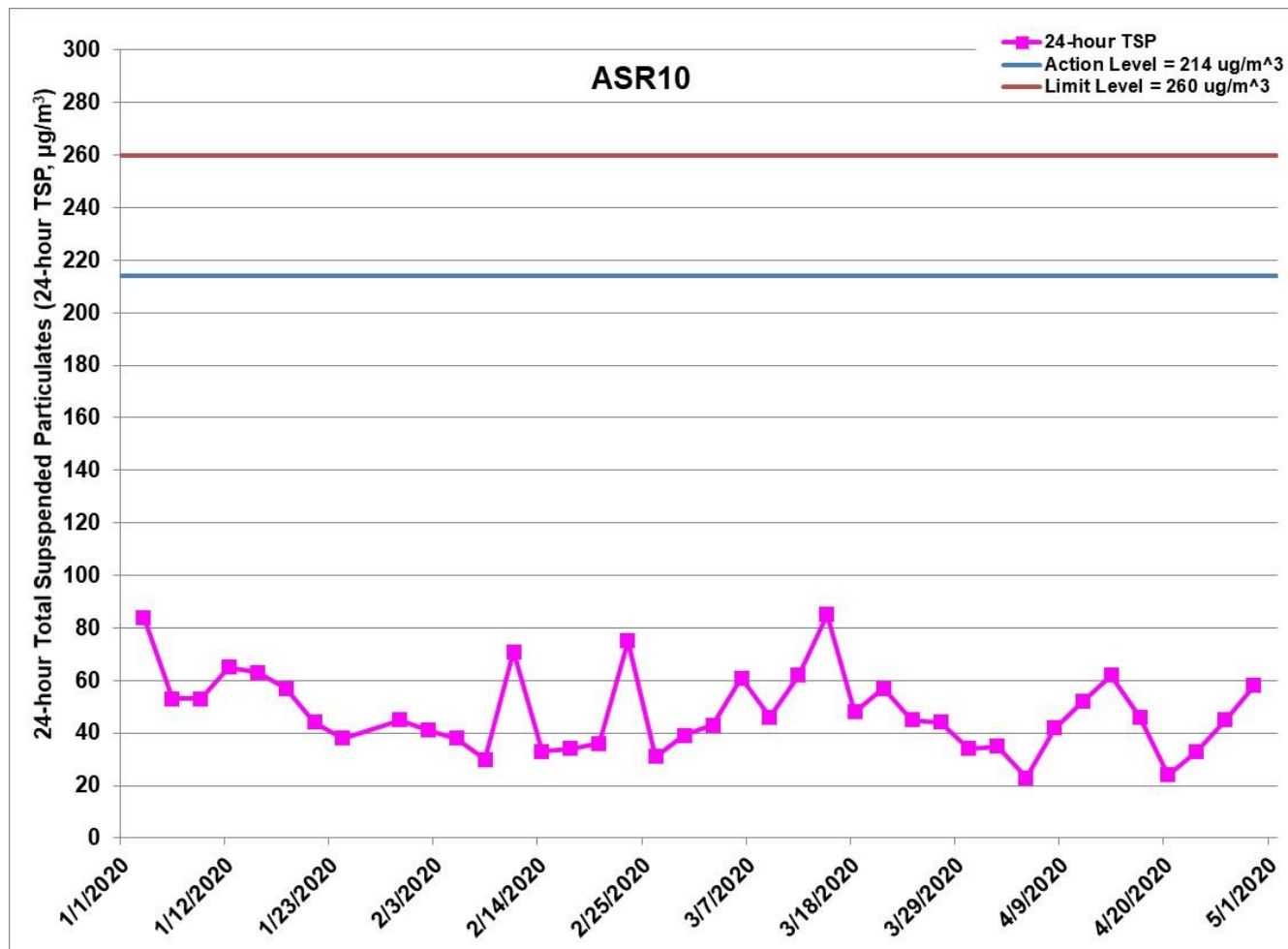


Figure G.10 Impact Monitoring - 24-hour Total Suspended Particulates ($\mu\text{g}/\text{m}^3$) at ASR10 between 1 January 2020 and 30 April 2020 during impact monitoring period. The weather conditions during the monitoring period varied from sunny to cloudy. Major land-based construction activities included: Road and Drainage Works at Northern Landfall and Southern Landfall, UU installation at Northern Landfall and Southern Landfall and Fireboard installation in Tunnel (1/1/2020 - 30/4/2020)

Ref: 0212330_Impact AQM graphs_April 2020.xlsx



Project	Contract	Date	Station	Weather	Start time	Parameters	Results	units
TMCLKL	HY/2012/08	2020-04-02	ASR10	Cloudy	08:00	1-hour TSP	58	ug/m3
TMCLKL	HY/2012/08	2020-04-02	ASR10	Cloudy	09:02	1-hour TSP	56	ug/m3
TMCLKL	HY/2012/08	2020-04-02	ASR10	Cloudy	10:04	1-hour TSP	48	ug/m3
TMCLKL	HY/2012/08	2020-04-02	ASR6	Cloudy	08:12	1-hour TSP	114	ug/m3
TMCLKL	HY/2012/08	2020-04-02	ASR6	Cloudy	09:14	1-hour TSP	73	ug/m3
TMCLKL	HY/2012/08	2020-04-02	ASR6	Cloudy	10:16	1-hour TSP	72	ug/m3
TMCLKL	HY/2012/08	2020-04-02	ASR5	Cloudy	08:25	1-hour TSP	228	ug/m3
TMCLKL	HY/2012/08	2020-04-02	ASR5	Cloudy	09:27	1-hour TSP	165	ug/m3
TMCLKL	HY/2012/08	2020-04-02	ASR5	Cloudy	10:29	1-hour TSP	156	ug/m3
TMCLKL	HY/2012/08	2020-04-02	ASR1	Cloudy	08:37	1-hour TSP	228	ug/m3
TMCLKL	HY/2012/08	2020-04-02	ASR1	Cloudy	09:39	1-hour TSP	109	ug/m3
TMCLKL	HY/2012/08	2020-04-02	ASR1	Cloudy	10:41	1-hour TSP	117	ug/m3
TMCLKL	HY/2012/08	2020-04-02	AQMS1	Cloudy	08:48	1-hour TSP	71	ug/m3
TMCLKL	HY/2012/08	2020-04-02	AQMS1	Cloudy	09:50	1-hour TSP	104	ug/m3
TMCLKL	HY/2012/08	2020-04-02	AQMS1	Cloudy	10:52	1-hour TSP	101	ug/m3
TMCLKL	HY/2012/08	2020-04-05	ASR10	Cloudy	08:04	1-hour TSP	14	ug/m3
TMCLKL	HY/2012/08	2020-04-05	ASR10	Cloudy	09:06	1-hour TSP	14	ug/m3
TMCLKL	HY/2012/08	2020-04-05	ASR10	Cloudy	10:08	1-hour TSP	14	ug/m3
TMCLKL	HY/2012/08	2020-04-05	ASR6	Cloudy	08:15	1-hour TSP	14	ug/m3
TMCLKL	HY/2012/08	2020-04-05	ASR6	Cloudy	09:17	1-hour TSP	15	ug/m3
TMCLKL	HY/2012/08	2020-04-05	ASR6	Cloudy	10:19	1-hour TSP	14	ug/m3
TMCLKL	HY/2012/08	2020-04-05	ASR5	Cloudy	08:27	1-hour TSP	14	ug/m3
TMCLKL	HY/2012/08	2020-04-05	ASR5	Cloudy	09:29	1-hour TSP	24	ug/m3
TMCLKL	HY/2012/08	2020-04-05	ASR5	Cloudy	10:31	1-hour TSP	14	ug/m3
TMCLKL	HY/2012/08	2020-04-05	ASR1	Cloudy	08:40	1-hour TSP	14	ug/m3
TMCLKL	HY/2012/08	2020-04-05	ASR1	Cloudy	09:42	1-hour TSP	20	ug/m3
TMCLKL	HY/2012/08	2020-04-05	ASR1	Cloudy	10:44	1-hour TSP	14	ug/m3
TMCLKL	HY/2012/08	2020-04-05	AQMS1	Cloudy	08:52	1-hour TSP	14	ug/m3
TMCLKL	HY/2012/08	2020-04-05	AQMS1	Cloudy	09:54	1-hour TSP	14	ug/m3
TMCLKL	HY/2012/08	2020-04-05	AQMS1	Cloudy	10:56	1-hour TSP	14	ug/m3
TMCLKL	HY/2012/08	2020-04-08	ASR10	Sunny	13:13	1-hour TSP	44	ug/m3

Project	Contract	Date	Station	Weather	Start time	Parameters	Results	units
TMCLKL	HY/2012/08	2020-04-08	ASR10	Sunny	14:15	1-hour TSP	123	ug/m3
TMCLKL	HY/2012/08	2020-04-08	ASR10	Sunny	15:17	1-hour TSP	80	ug/m3
TMCLKL	HY/2012/08	2020-04-08	ASR6	Sunny	13:42	1-hour TSP	85	ug/m3
TMCLKL	HY/2012/08	2020-04-08	ASR6	Sunny	14:26	1-hour TSP	86	ug/m3
TMCLKL	HY/2012/08	2020-04-08	ASR6	Sunny	15:28	1-hour TSP	121	ug/m3
TMCLKL	HY/2012/08	2020-04-08	ASR5	Sunny	13:36	1-hour TSP	198	ug/m3
TMCLKL	HY/2012/08	2020-04-08	ASR5	Sunny	14:38	1-hour TSP	243	ug/m3
TMCLKL	HY/2012/08	2020-04-08	ASR5	Sunny	15:40	1-hour TSP	384	ug/m3
TMCLKL	HY/2012/08	2020-04-08	ASR1	Sunny	13:47	1-hour TSP	328	ug/m3
TMCLKL	HY/2012/08	2020-04-08	ASR1	Sunny	14:49	1-hour TSP	357	ug/m3
TMCLKL	HY/2012/08	2020-04-08	ASR1	Sunny	15:51	1-hour TSP	457	ug/m3
TMCLKL	HY/2012/08	2020-04-08	AQMS1	Sunny	13:58	1-hour TSP	50	ug/m3
TMCLKL	HY/2012/08	2020-04-08	AQMS1	Sunny	15:00	1-hour TSP	95	ug/m3
TMCLKL	HY/2012/08	2020-04-08	AQMS1	Sunny	16:02	1-hour TSP	114	ug/m3
TMCLKL	HY/2012/08	2020-04-11	ASR10	Sunny	8:00	1-hour TSP	52	ug/m3
TMCLKL	HY/2012/08	2020-04-11	ASR10	Sunny	9:02	1-hour TSP	66	ug/m3
TMCLKL	HY/2012/08	2020-04-11	ASR10	Sunny	10:04	1-hour TSP	69	ug/m3
TMCLKL	HY/2012/08	2020-04-11	ASR6	Sunny	8:13	1-hour TSP	63	ug/m3
TMCLKL	HY/2012/08	2020-04-11	ASR6	Sunny	9:15	1-hour TSP	39	ug/m3
TMCLKL	HY/2012/08	2020-04-11	ASR6	Sunny	10:17	1-hour TSP	68	ug/m3
TMCLKL	HY/2012/08	2020-04-11	ASR5	Sunny	8:24	1-hour TSP	169	ug/m3
TMCLKL	HY/2012/08	2020-04-11	ASR5	Sunny	9:26	1-hour TSP	167	ug/m3
TMCLKL	HY/2012/08	2020-04-11	ASR5	Sunny	10:28	1-hour TSP	108	ug/m3
TMCLKL	HY/2012/08	2020-04-11	ASR1	Sunny	8:36	1-hour TSP	171	ug/m3
TMCLKL	HY/2012/08	2020-04-11	ASR1	Sunny	9:38	1-hour TSP	138	ug/m3
TMCLKL	HY/2012/08	2020-04-11	ASR1	Sunny	10:40	1-hour TSP	105	ug/m3
TMCLKL	HY/2012/08	2020-04-11	AQMS1	Sunny	8:47	1-hour TSP	99	ug/m3
TMCLKL	HY/2012/08	2020-04-11	AQMS1	Sunny	9:49	1-hour TSP	123	ug/m3
TMCLKL	HY/2012/08	2020-04-11	AQMS1	Sunny	10:51	1-hour TSP	102	ug/m3
TMCLKL	HY/2012/08	2020-04-14	ASR10	Sunny	13:27	1-hour TSP	95	ug/m3
TMCLKL	HY/2012/08	2020-04-14	ASR10	Sunny	14:29	1-hour TSP	44	ug/m3

Project	Contract	Date	Station	Weather	Start time	Parameters	Results	units
TMCLKL	HY/2012/08	2020-04-14	ASR10	Sunny	15:31	1-hour TSP	47	ug/m3
TMCLKL	HY/2012/08	2020-04-14	ASR6	Sunny	13:38	1-hour TSP	193	ug/m3
TMCLKL	HY/2012/08	2020-04-14	ASR6	Sunny	14:40	1-hour TSP	113	ug/m3
TMCLKL	HY/2012/08	2020-04-14	ASR6	Sunny	15:42	1-hour TSP	74	ug/m3
TMCLKL	HY/2012/08	2020-04-14	ASR5	Sunny	13:50	1-hour TSP	254	ug/m3
TMCLKL	HY/2012/08	2020-04-14	ASR5	Sunny	14:52	1-hour TSP	109	ug/m3
TMCLKL	HY/2012/08	2020-04-14	ASR5	Sunny	15:54	1-hour TSP	98	ug/m3
TMCLKL	HY/2012/08	2020-04-14	ASR1	Sunny	14:00	1-hour TSP	673	ug/m3
TMCLKL	HY/2012/08	2020-04-14	ASR1	Sunny	15:02	1-hour TSP	72	ug/m3
TMCLKL	HY/2012/08	2020-04-14	ASR1	Sunny	16:04	1-hour TSP	161	ug/m3
TMCLKL	HY/2012/08	2020-04-14	AQMS1	Sunny	14:12	1-hour TSP	140	ug/m3
TMCLKL	HY/2012/08	2020-04-14	AQMS1	Sunny	15:14	1-hour TSP	117	ug/m3
TMCLKL	HY/2012/08	2020-04-14	AQMS1	Sunny	16:16	1-hour TSP	127	ug/m3
TMCLKL	HY/2012/08	2020-04-17	ASR10	Sunny	13:11	1-hour TSP	47	ug/m3
TMCLKL	HY/2012/08	2020-04-17	ASR10	Sunny	14:13	1-hour TSP	59	ug/m3
TMCLKL	HY/2012/08	2020-04-17	ASR10	Sunny	15:15	1-hour TSP	61	ug/m3
TMCLKL	HY/2012/08	2020-04-17	ASR6	Sunny	13:22	1-hour TSP	97	ug/m3
TMCLKL	HY/2012/08	2020-04-17	ASR6	Sunny	14:24	1-hour TSP	64	ug/m3
TMCLKL	HY/2012/08	2020-04-17	ASR6	Sunny	15:26	1-hour TSP	71	ug/m3
TMCLKL	HY/2012/08	2020-04-17	ASR5	Sunny	13:34	1-hour TSP	136	ug/m3
TMCLKL	HY/2012/08	2020-04-17	ASR5	Sunny	14:36	1-hour TSP	173	ug/m3
TMCLKL	HY/2012/08	2020-04-17	ASR5	Sunny	15:38	1-hour TSP	151	ug/m3
TMCLKL	HY/2012/08	2020-04-17	ASR1	Sunny	13:45	1-hour TSP	159	ug/m3
TMCLKL	HY/2012/08	2020-04-17	ASR1	Sunny	14:47	1-hour TSP	173	ug/m3
TMCLKL	HY/2012/08	2020-04-17	ASR1	Sunny	15:49	1-hour TSP	113	ug/m3
TMCLKL	HY/2012/08	2020-04-17	AQMS1	Sunny	13:57	1-hour TSP	174	ug/m3
TMCLKL	HY/2012/08	2020-04-17	AQMS1	Sunny	14:59	1-hour TSP	110	ug/m3
TMCLKL	HY/2012/08	2020-04-17	AQMS1	Sunny	16:01	1-hour TSP	68	ug/m3
TMCLKL	HY/2012/08	2020-04-20	ASR10	Sunny	13:25	1-hour TSP	39	ug/m3
TMCLKL	HY/2012/08	2020-04-20	ASR10	Sunny	14:27	1-hour TSP	41	ug/m3
TMCLKL	HY/2012/08	2020-04-20	ASR10	Sunny	15:29	1-hour TSP	30	ug/m3

Project	Contract	Date	Station	Weather	Start time	Parameters	Results	units
TMCLKL	HY/2012/08	2020-04-20	ASR6	Sunny	13:36	1-hour TSP	60	ug/m3
TMCLKL	HY/2012/08	2020-04-20	ASR6	Sunny	14:38	1-hour TSP	76	ug/m3
TMCLKL	HY/2012/08	2020-04-20	ASR6	Sunny	15:40	1-hour TSP	67	ug/m3
TMCLKL	HY/2012/08	2020-04-20	ASR5	Sunny	13:48	1-hour TSP	125	ug/m3
TMCLKL	HY/2012/08	2020-04-20	ASR5	Sunny	14:50	1-hour TSP	105	ug/m3
TMCLKL	HY/2012/08	2020-04-20	ASR5	Sunny	15:52	1-hour TSP	148	ug/m3
TMCLKL	HY/2012/08	2020-04-20	ASR1	Sunny	14:00	1-hour TSP	262	ug/m3
TMCLKL	HY/2012/08	2020-04-20	ASR1	Sunny	15:02	1-hour TSP	190	ug/m3
TMCLKL	HY/2012/08	2020-04-20	ASR1	Sunny	16:04	1-hour TSP	87	ug/m3
TMCLKL	HY/2012/08	2020-04-20	AQMS1	Sunny	14:12	1-hour TSP	31	ug/m3
TMCLKL	HY/2012/08	2020-04-20	AQMS1	Sunny	15:14	1-hour TSP	45	ug/m3
TMCLKL	HY/2012/08	2020-04-20	AQMS1	Sunny	16:16	1-hour TSP	69	ug/m3
TMCLKL	HY/2012/08	2020-04-23	ASR10	Cloudy	13:01	1-hour TSP	26	ug/m3
TMCLKL	HY/2012/08	2020-04-23	ASR10	Cloudy	14:03	1-hour TSP	55	ug/m3
TMCLKL	HY/2012/08	2020-04-23	ASR10	Cloudy	15:05	1-hour TSP	79	ug/m3
TMCLKL	HY/2012/08	2020-04-23	ASR6	Cloudy	13:13	1-hour TSP	38	ug/m3
TMCLKL	HY/2012/08	2020-04-23	ASR6	Cloudy	14:15	1-hour TSP	100	ug/m3
TMCLKL	HY/2012/08	2020-04-23	ASR6	Cloudy	15:17	1-hour TSP	150	ug/m3
TMCLKL	HY/2012/08	2020-04-23	ASR5	Cloudy	13:24	1-hour TSP	136	ug/m3
TMCLKL	HY/2012/08	2020-04-23	ASR5	Cloudy	14:26	1-hour TSP	206	ug/m3
TMCLKL	HY/2012/08	2020-04-23	ASR5	Cloudy	15:28	1-hour TSP	168	ug/m3
TMCLKL	HY/2012/08	2020-04-23	ASR1	Cloudy	13:35	1-hour TSP	169	ug/m3
TMCLKL	HY/2012/08	2020-04-23	ASR1	Cloudy	14:37	1-hour TSP	173	ug/m3
TMCLKL	HY/2012/08	2020-04-23	ASR1	Cloudy	15:39	1-hour TSP	157	ug/m3
TMCLKL	HY/2012/08	2020-04-23	AQMS1	Cloudy	13:47	1-hour TSP	37	ug/m3
TMCLKL	HY/2012/08	2020-04-23	AQMS1	Cloudy	14:49	1-hour TSP	125	ug/m3
TMCLKL	HY/2012/08	2020-04-23	AQMS1	Cloudy	15:51	1-hour TSP	138	ug/m3
TMCLKL	HY/2012/08	2020-04-26	ASR10	Sunny	8:15	1-hour TSP	149	ug/m3
TMCLKL	HY/2012/08	2020-04-26	ASR10	Sunny	9:17	1-hour TSP	96	ug/m3
TMCLKL	HY/2012/08	2020-04-26	ASR10	Sunny	10:19	1-hour TSP	96	ug/m3
TMCLKL	HY/2012/08	2020-04-26	ASR6	Sunny	8:26	1-hour TSP	267	ug/m3

Project	Contract	Date	Station	Weather	Start time	Parameters	Results	units
TMCLKL	HY/2012/08	2020-04-26	ASR6	Sunny	9:28	1-hour TSP	175	ug/m3
TMCLKL	HY/2012/08	2020-04-26	ASR6	Sunny	10:30	1-hour TSP	139	ug/m3
TMCLKL	HY/2012/08	2020-04-26	ASR5	Sunny	8:37	1-hour TSP	226	ug/m3
TMCLKL	HY/2012/08	2020-04-26	ASR5	Sunny	9:39	1-hour TSP	142	ug/m3
TMCLKL	HY/2012/08	2020-04-26	ASR5	Sunny	10:41	1-hour TSP	179	ug/m3
TMCLKL	HY/2012/08	2020-04-26	ASR1	Sunny	8:49	1-hour TSP	232	ug/m3
TMCLKL	HY/2012/08	2020-04-26	ASR1	Sunny	9:51	1-hour TSP	181	ug/m3
TMCLKL	HY/2012/08	2020-04-26	ASR1	Sunny	10:53	1-hour TSP	181	ug/m3
TMCLKL	HY/2012/08	2020-04-26	AQMS1	Sunny	9:00	1-hour TSP	190	ug/m3
TMCLKL	HY/2012/08	2020-04-26	AQMS1	Sunny	10:02	1-hour TSP	136	ug/m3
TMCLKL	HY/2012/08	2020-04-26	AQMS1	Sunny	11:04	1-hour TSP	125	ug/m3
TMCLKL	HY/2012/08	2020-04-29	ASR10	Sunny	13:00	1-hour TSP	52	ug/m3
TMCLKL	HY/2012/08	2020-04-29	ASR10	Sunny	14:02	1-hour TSP	74	ug/m3
TMCLKL	HY/2012/08	2020-04-29	ASR10	Sunny	15:04	1-hour TSP	109	ug/m3
TMCLKL	HY/2012/08	2020-04-29	ASR6	Sunny	13:11	1-hour TSP	167	ug/m3
TMCLKL	HY/2012/08	2020-04-29	ASR6	Sunny	14:13	1-hour TSP	63	ug/m3
TMCLKL	HY/2012/08	2020-04-29	ASR6	Sunny	15:15	1-hour TSP	54	ug/m3
TMCLKL	HY/2012/08	2020-04-29	ASR5	Sunny	13:23	1-hour TSP	206	ug/m3
TMCLKL	HY/2012/08	2020-04-29	ASR5	Sunny	14:25	1-hour TSP	97	ug/m3
TMCLKL	HY/2012/08	2020-04-29	ASR5	Sunny	15:27	1-hour TSP	81	ug/m3
TMCLKL	HY/2012/08	2020-04-29	ASR1	Sunny	13:35	1-hour TSP	112	ug/m3
TMCLKL	HY/2012/08	2020-04-29	ASR1	Sunny	14:37	1-hour TSP	105	ug/m3
TMCLKL	HY/2012/08	2020-04-29	ASR1	Sunny	15:39	1-hour TSP	110	ug/m3
TMCLKL	HY/2012/08	2020-04-29	AQMS1	Sunny	13:48	1-hour TSP	214	ug/m3
TMCLKL	HY/2012/08	2020-04-29	AQMS1	Sunny	14:50	1-hour TSP	81	ug/m3
TMCLKL	HY/2012/08	2020-04-29	AQMS1	Sunny	15:52	1-hour TSP	85	ug/m3
TMCLKL	HY/2012/08	2020-04-02	ASR10	Cloudy	11:06	24-hour TSP	35	ug/m3
TMCLKL	HY/2012/08	2020-04-02	ASR6	Cloudy	11:18	24-hour TSP	46	ug/m3
TMCLKL	HY/2012/08	2020-04-02	ASR5	Cloudy	11:31	24-hour TSP	81	ug/m3
TMCLKL	HY/2012/08	2020-04-02	ASR1	Cloudy	11:43	24-hour TSP	77	ug/m3
TMCLKL	HY/2012/08	2020-04-02	AQMS1	Cloudy	11:54	24-hour TSP	47	ug/m3

Project	Contract	Date	Station	Weather	Start time	Parameters	Results	units
TMCLKL	HY/2012/08	2020-04-05	ASR10	Sunny	11:10	24-hour TSP	23	ug/m3
TMCLKL	HY/2012/08	2020-04-05	ASR6	Sunny	11:21	24-hour TSP	28	ug/m3
TMCLKL	HY/2012/08	2020-04-05	ASR5	Sunny	11:33	24-hour TSP	42	ug/m3
TMCLKL	HY/2012/08	2020-04-05	ASR1	Sunny	11:46	24-hour TSP	37	ug/m3
TMCLKL	HY/2012/08	2020-04-05	AQMS1	Sunny	11:58	24-hour TSP	28	ug/m3
TMCLKL	HY/2012/08	2020-04-08	ASR10	Sunny	16:19	24-hour TSP	42	ug/m3
TMCLKL	HY/2012/08	2020-04-08	ASR6	Sunny	16:30	24-hour TSP	73	ug/m3
TMCLKL	HY/2012/08	2020-04-08	ASR5	Sunny	16:42	24-hour TSP	97	ug/m3
TMCLKL	HY/2012/08	2020-04-08	ASR1	Sunny	16:53	24-hour TSP	94	ug/m3
TMCLKL	HY/2012/08	2020-04-08	AQMS1	Sunny	17:04	24-hour TSP	67	ug/m3
TMCLKL	HY/2012/08	2020-04-11	ASR10	Sunny	11:06	24-hour TSP	52	ug/m3
TMCLKL	HY/2012/08	2020-04-11	ASR6	Sunny	11:19	24-hour TSP	78	ug/m3
TMCLKL	HY/2012/08	2020-04-11	ASR5	Sunny	11:30	24-hour TSP	100	ug/m3
TMCLKL	HY/2012/08	2020-04-11	ASR1	Sunny	11:42	24-hour TSP	128	ug/m3
TMCLKL	HY/2012/08	2020-04-11	AQMS1	Sunny	11:53	24-hour TSP	65	ug/m3
TMCLKL	HY/2012/08	2020-04-14	ASR10	Sunny	16:33	24-hour TSP	62	ug/m3
TMCLKL	HY/2012/08	2020-04-14	ASR6	Sunny	16:44	24-hour TSP	109	ug/m3
TMCLKL	HY/2012/08	2020-04-14	ASR5	Sunny	16:54	24-hour TSP	113	ug/m3
TMCLKL	HY/2012/08	2020-04-14	ASR1	Sunny	17:06	24-hour TSP	97	ug/m3
TMCLKL	HY/2012/08	2020-04-14	AQMS1	Sunny	17:18	24-hour TSP	93	ug/m3
TMCLKL	HY/2012/08	2020-04-17	ASR10	Sunny	16:17	24-hour TSP	46	ug/m3
TMCLKL	HY/2012/08	2020-04-17	ASR6	Sunny	16:28	24-hour TSP	55	ug/m3
TMCLKL	HY/2012/08	2020-04-17	ASR5	Sunny	16:40	24-hour TSP	100	ug/m3
TMCLKL	HY/2012/08	2020-04-17	ASR1	Sunny	16:51	24-hour TSP	117	ug/m3
TMCLKL	HY/2012/08	2020-04-17	AQMS1	Sunny	17:03	24-hour TSP	59	ug/m3
TMCLKL	HY/2012/08	2020-04-20	ASR10	Sunny	16:31	24-hour TSP	24	ug/m3
TMCLKL	HY/2012/08	2020-04-20	ASR6	Sunny	16:42	24-hour TSP	41	ug/m3
TMCLKL	HY/2012/08	2020-04-20	ASR5	Sunny	16:54	24-hour TSP	93	ug/m3
TMCLKL	HY/2012/08	2020-04-20	ASR1	Sunny	17:06	24-hour TSP	86	ug/m3
TMCLKL	HY/2012/08	2020-04-20	AQMS1	Sunny	17:18	24-hour TSP	51	ug/m3
TMCLKL	HY/2012/08	2020-04-23	ASR10	Sunny	16:07	24-hour TSP	33	ug/m3

Project	Contract	Date	Station	Weather	Start time	Parameters	Results	units
TMCLKL	HY/2012/08	2020-04-23	ASR6	Sunny	16:19	24-hour TSP	52	ug/m3
TMCLKL	HY/2012/08	2020-04-23	ASR5	Sunny	16:30	24-hour TSP	77	ug/m3
TMCLKL	HY/2012/08	2020-04-23	ASR1	Sunny	16:41	24-hour TSP	102	ug/m3
TMCLKL	HY/2012/08	2020-04-23	AQMS1	Sunny	16:53	24-hour TSP	89	ug/m3
TMCLKL	HY/2012/08	2020-04-26	ASR10	Sunny	11:21	24-hour TSP	45	ug/m3
TMCLKL	HY/2012/08	2020-04-26	ASR6	Sunny	11:32	24-hour TSP	67	ug/m3
TMCLKL	HY/2012/08	2020-04-26	ASR5	Sunny	11:43	24-hour TSP	94	ug/m3
TMCLKL	HY/2012/08	2020-04-26	ASR1	Sunny	11:55	24-hour TSP	61	ug/m3
TMCLKL	HY/2012/08	2020-04-26	AQMS1	Sunny	12:06	24-hour TSP	68	ug/m3
TMCLKL	HY/2012/08	2020-04-29	ASR10	Sunny	16:06	24-hour TSP	58	ug/m3
TMCLKL	HY/2012/08	2020-04-29	ASR6	Sunny	16:17	24-hour TSP	94	ug/m3
TMCLKL	HY/2012/08	2020-04-29	ASR5	Sunny	16:29	24-hour TSP	121	ug/m3
TMCLKL	HY/2012/08	2020-04-29	ASR1	Sunny	16:41	24-hour TSP	47	ug/m3
TMCLKL	HY/2012/08	2020-04-29	AQMS1	Cloudy	16:54	24-hour TSP	85	ug/m3