

Appendix G

Impact Air Quality Monitoring Results

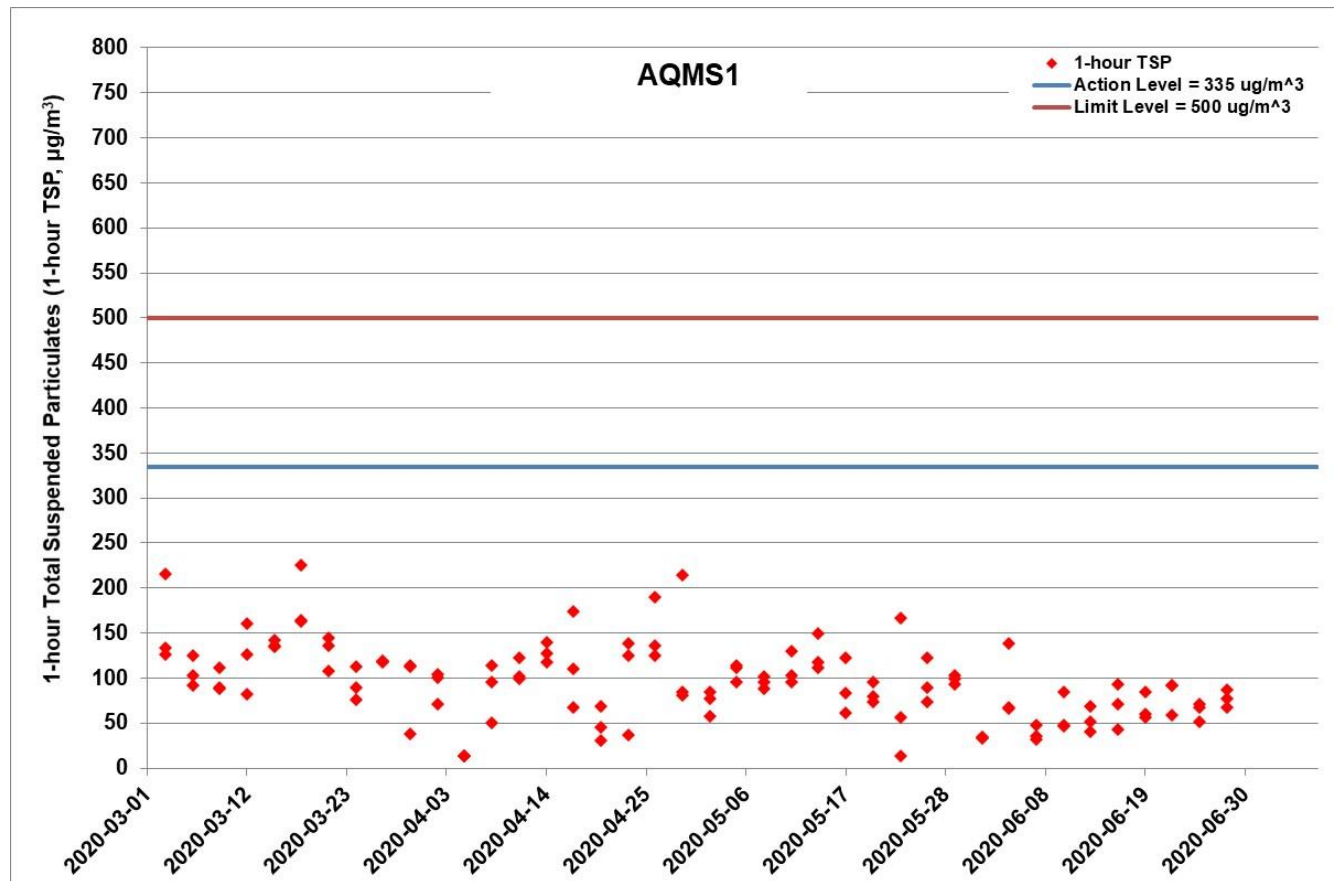


Figure G.1 Impact Monitoring – 1-hour Total Suspended Particulates ($\mu\text{g}/\text{m}^3$) at AQMS1 between 1 March 2020 and 30 June 2020 during impact monitoring period. The weather conditions during the monitoring period varied from sunny to cloudy. Major land-based construction activities included: Road and Drainage Works at Northern Landfall and Southern Landfall, UU installation at Northern Landfall and Southern Landfall and Fireboard installation in Tunnel (1/3/2020 – 30/6/2020)

Ref: 0212330_Impact AQM graphs_June 2020.xlsx



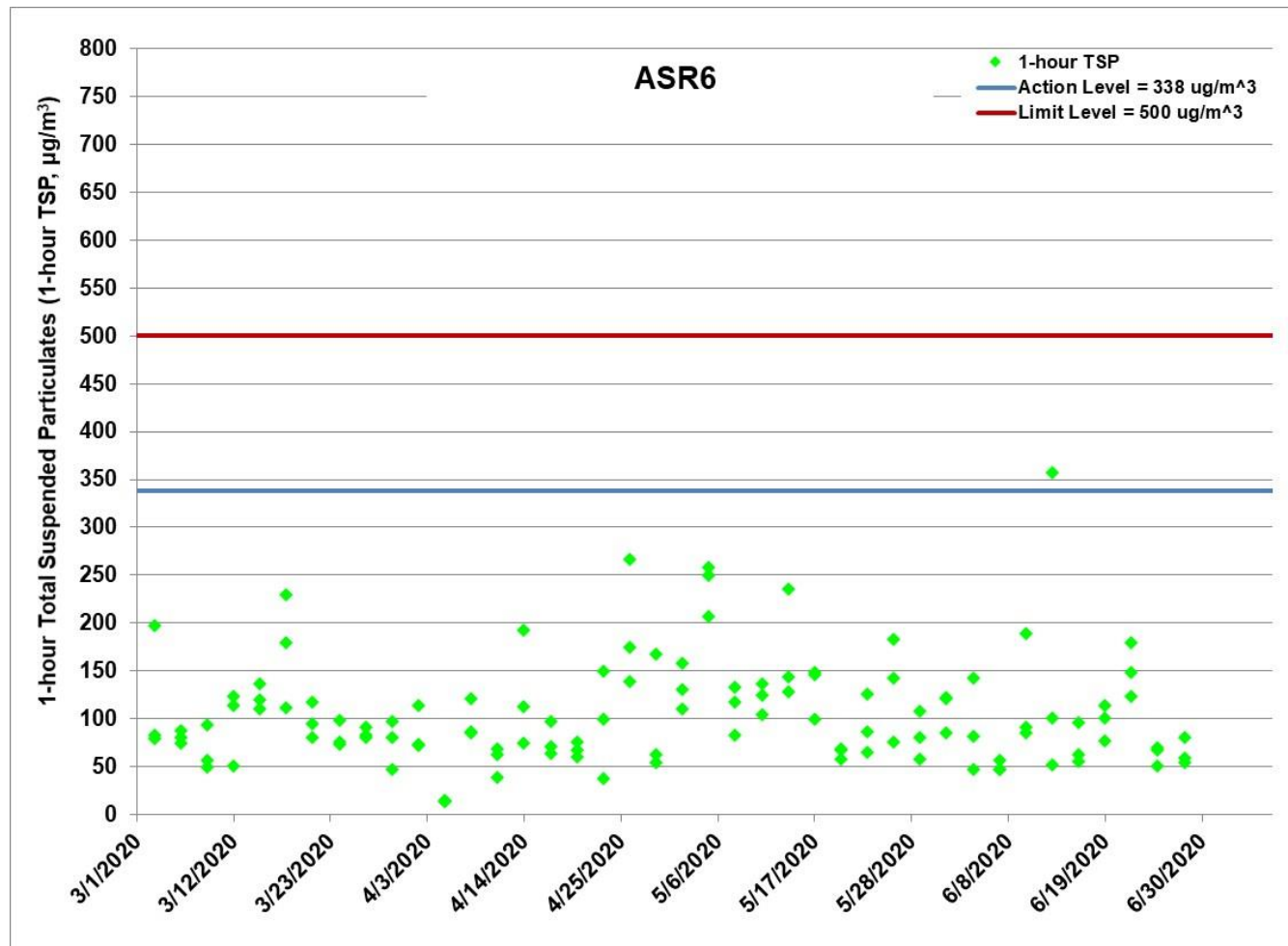


Figure G.2 Impact Monitoring – 1-hour Total Suspended Particulates (µg/m³) at ASR6 between 1 March 2020 and 30 June 2020 during impact monitoring period. The weather conditions during the monitoring period varied from sunny to cloudy. Major land-based construction activities included: Road and Drainage Works at Northern Landfall and Southern Landfall, UU installation at Northern Landfall and Southern Landfall and Fireboard installation in Tunnel (1/3/2020 – 30/6/2020)

Ref: 0212330_Impact AQM graphs_June 2020.xlsx



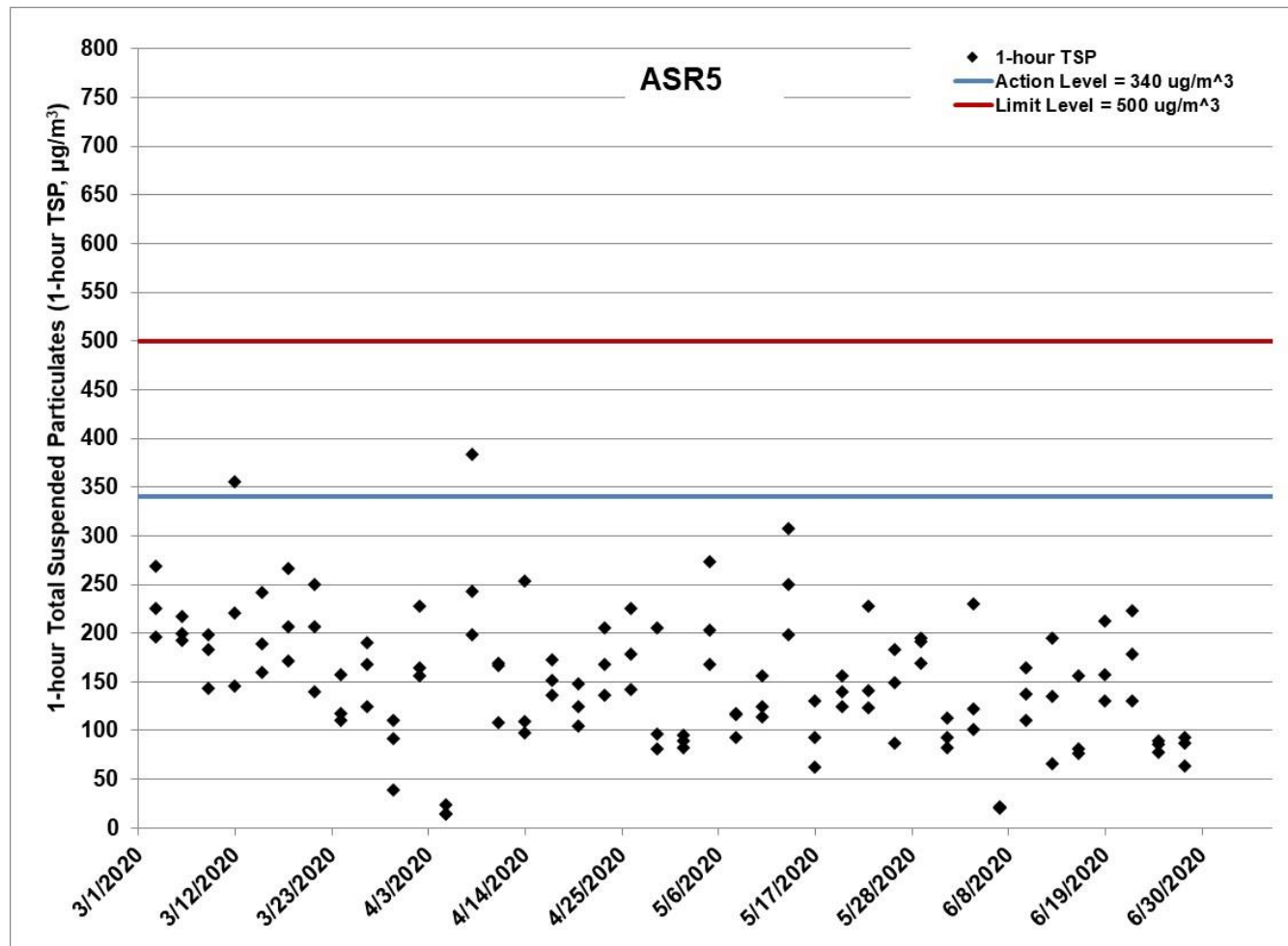


Figure G.4 Impact Monitoring - 1-hour Total Suspended Particulates ($\mu\text{g}/\text{m}^3$) at ASR5 between 1 March 2020 and 30 June 2020 during impact monitoring period. The weather conditions during the monitoring period varied from sunny to cloudy. Major land-based construction activities included: Road and Drainage Works at Northern Landfall and Southern Landfall, UU installation at Northern Landfall and Southern Landfall and Fireboard installation in Tunnel (1/3/2020 - 30/6/2020)

Ref: 0212330_Impact AQM graphs_June 2020.xlsx



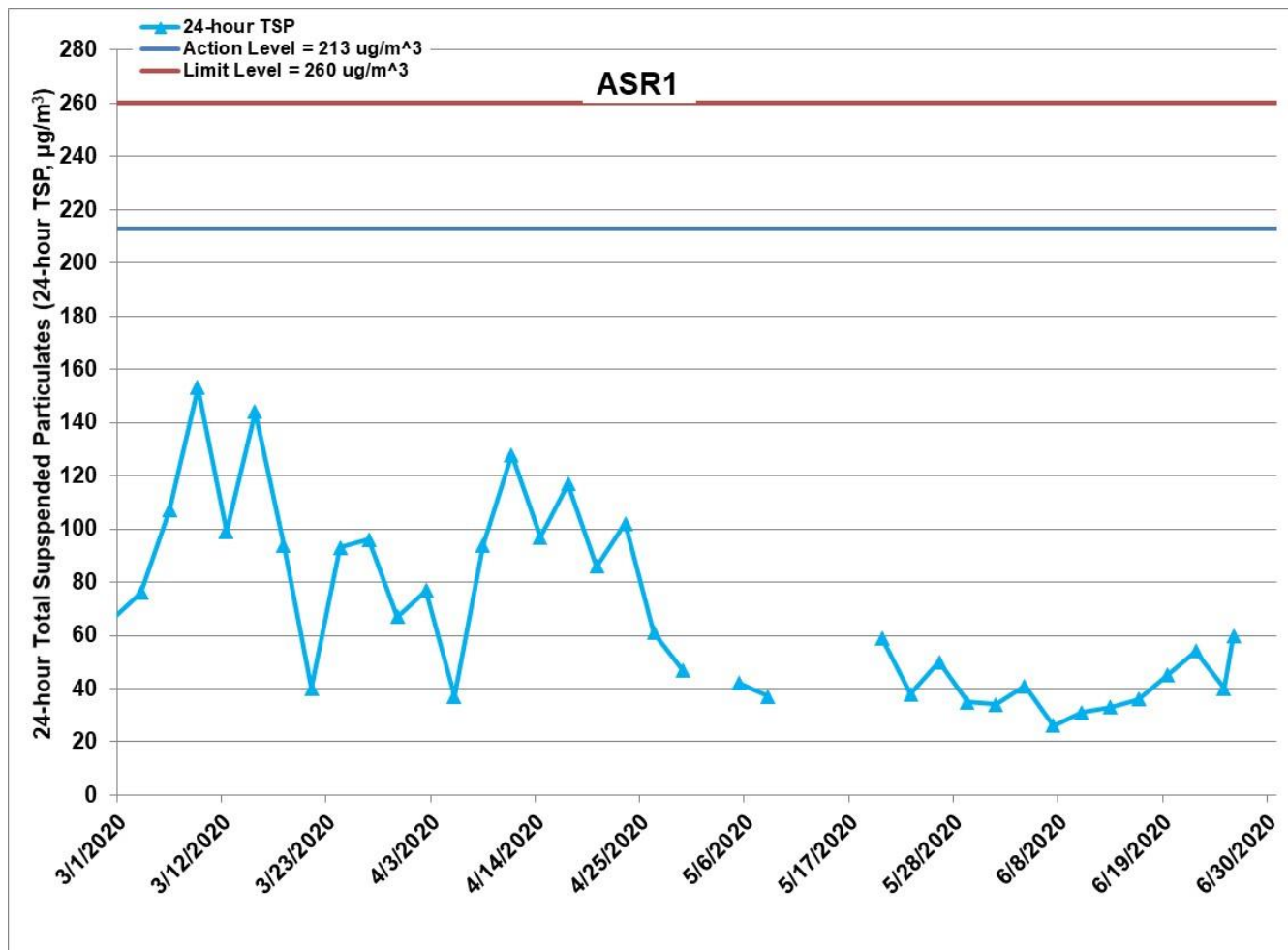


Figure G.6 Impact Monitoring – 24-hour Total Suspended Particulates ($\mu\text{g}/\text{m}^3$) at ASR1 between 1 March 2020 and 30 June 2020 during impact monitoring period. The weather conditions during the monitoring period varied from sunny to cloudy. Major land-based construction activities included: Road and Drainage Works at Northern Landfall and Southern Landfall, UU installation at Northern Landfall and Southern Landfall and Fireboard installation in Tunnel (1/3/2020 – 30/6/2020)

Ref: 0212330_Impact AQM graphs_June 2020.xlsx



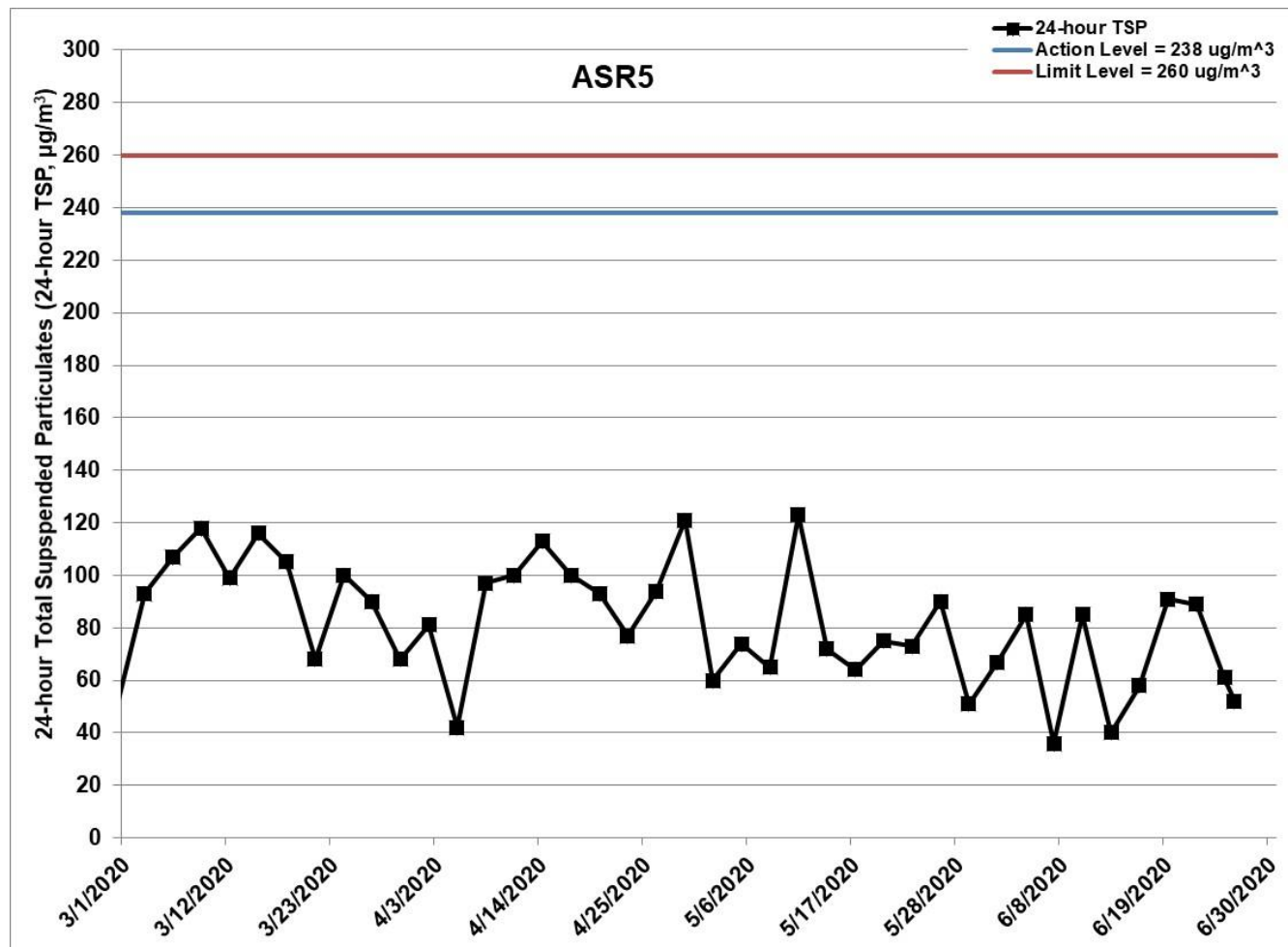


Figure G.7 Impact Monitoring - 24-hour Total Suspended Particulates ($\mu\text{g}/\text{m}^3$) at ASR5 between 1 March 2020 and 30 June 2020 during impact monitoring period. The weather conditions during the monitoring period varied from sunny to cloudy. Major land-based construction activities included: Road and Drainage Works at Northern Landfall and Southern Landfall, UU installation at Northern Landfall and Southern Landfall and Fireboard installation in Tunnel (1/3/2020 - 30/6/2020)

Ref: 0212330_Impact AQM graphs_June 2020.xlsx



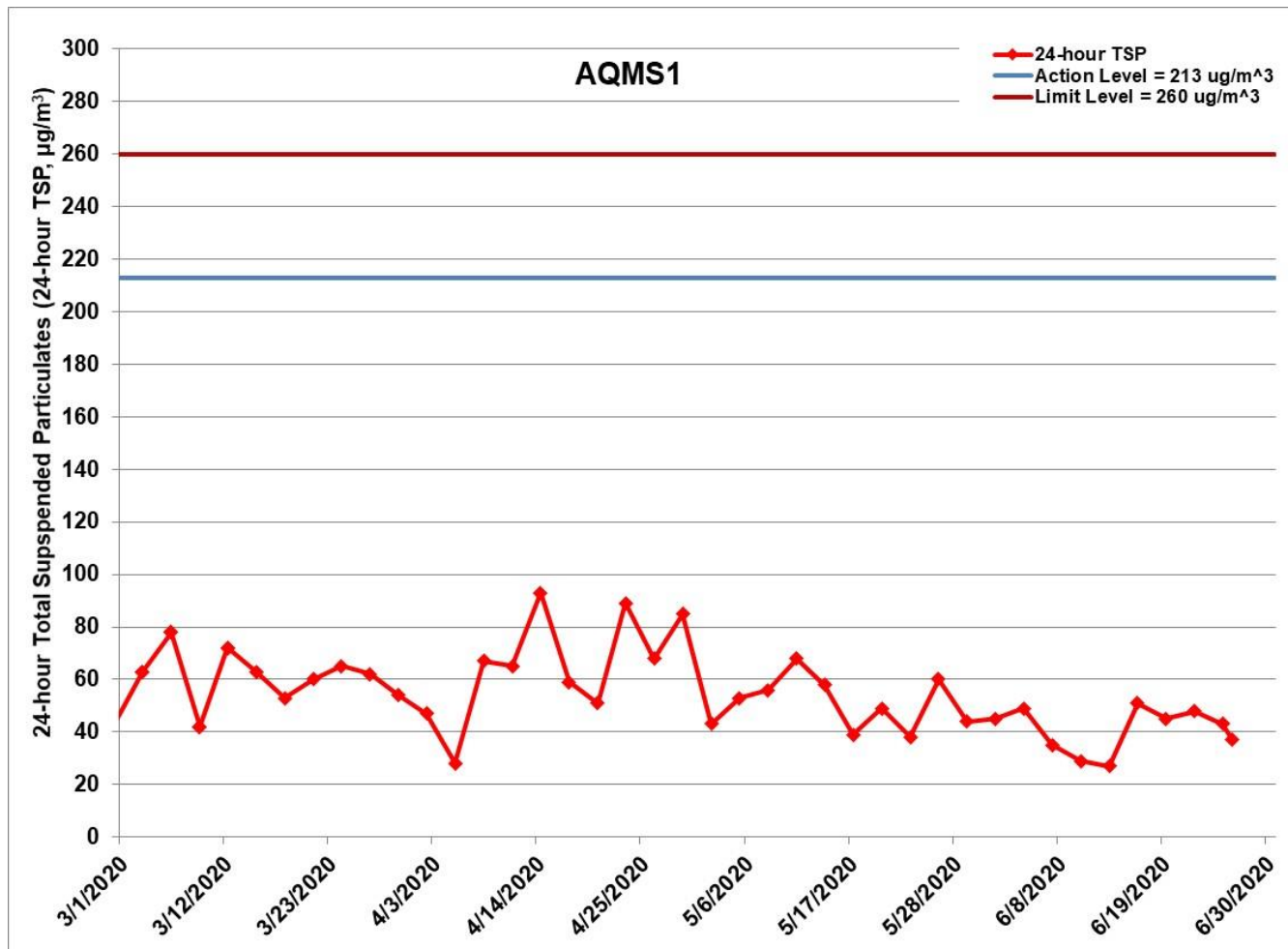


Figure G.8 Impact Monitoring – 24-hour Total Suspended Particulates ($\mu\text{g}/\text{m}^3$) at AQMS1 between 1 March 2020 and 30 June 2020 during impact monitoring period. The weather conditions during the monitoring period varied from sunny to cloudy. Major land-based construction activities included: Road and Drainage Works at Northern Landfall and Southern Landfall, UU installation at Northern Landfall and Southern Landfall and Fireboard installation in Tunnel (1/3/2020 – 30/6/2020)

Ref: 0212330_Impact AQM graphs_June 2020.xlsx



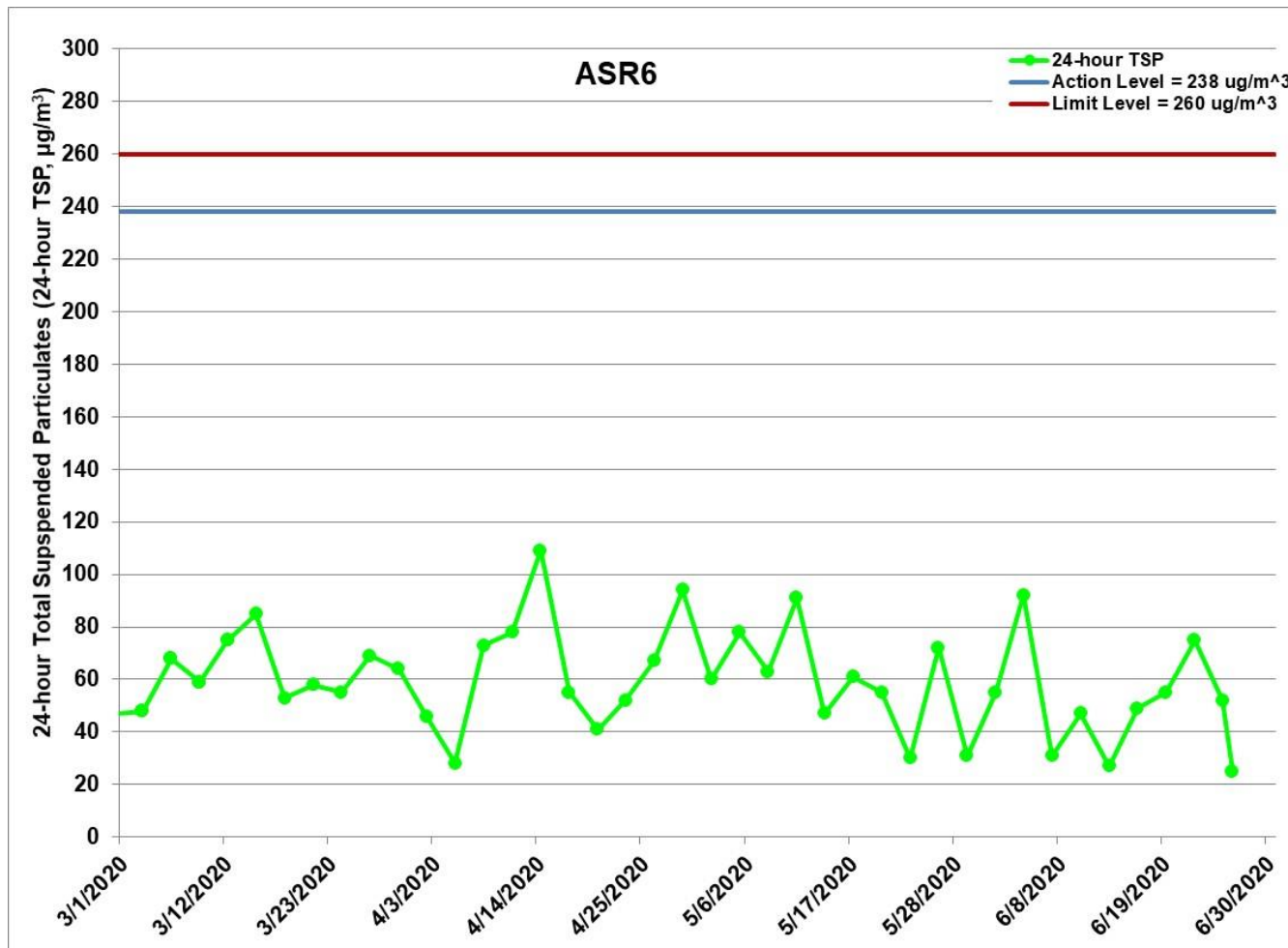


Figure G.9 Impact Monitoring – 24-hour Total Suspended Particulates ($\mu\text{g}/\text{m}^3$) at ASR6 between 1 March 2020 and 30 June 2020 during impact monitoring period. The weather conditions during the monitoring period varied from sunny to cloudy. Major land-based construction activities included: Road and Drainage Works at Northern Landfall and Southern Landfall, UU installation at Northern Landfall and Southern Landfall and Fireboard installation in Tunnel (1/3/2020 – 30/6/2020)

Ref: 0212330_Impact AQM graphs_June 2020.xlsx



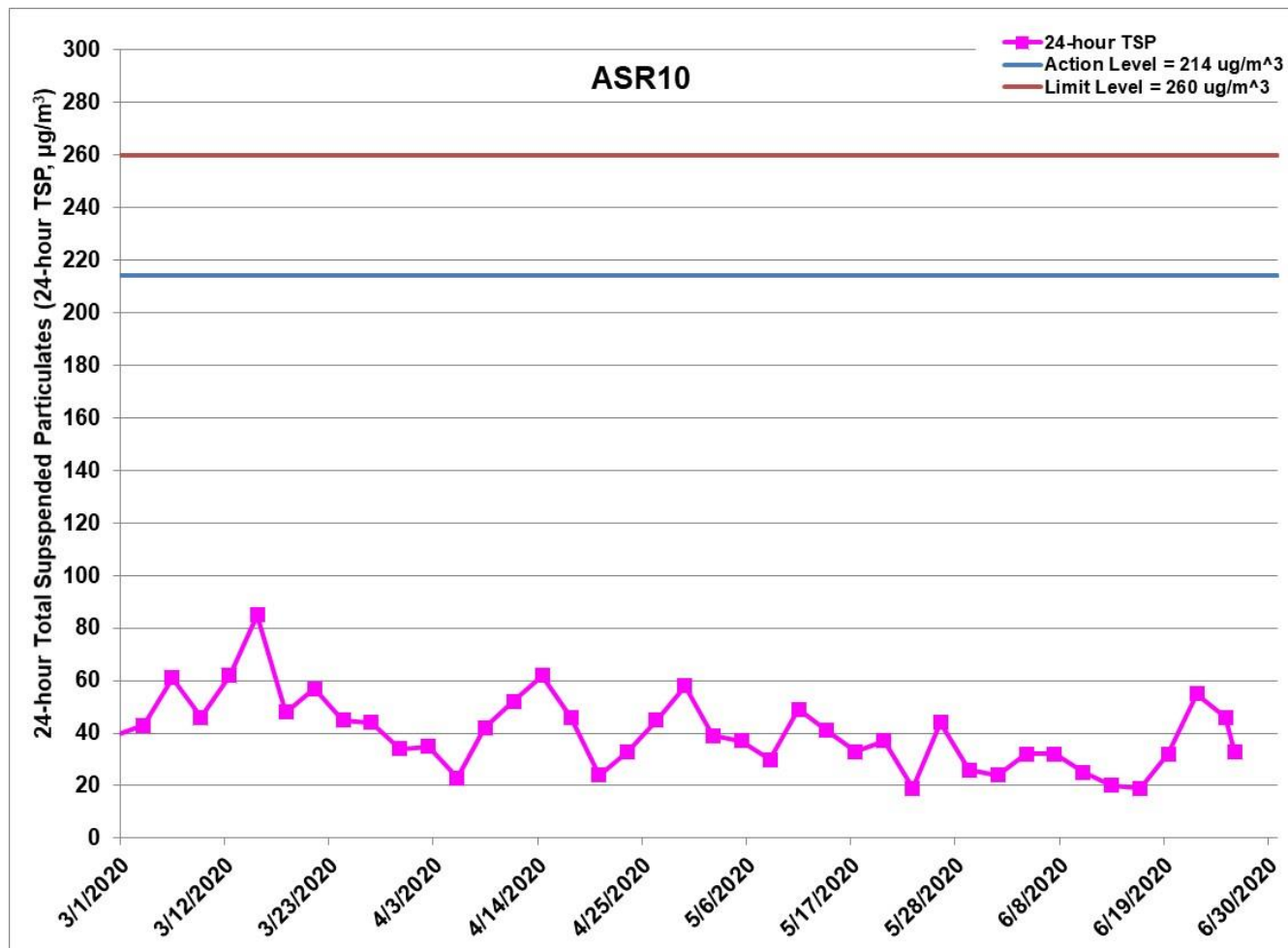


Figure G.10 Impact Monitoring - 24-hour Total Suspended Particulates ($\mu\text{g}/\text{m}^3$) at ASR10 between 1 March 2020 and 30 June 2020 during impact monitoring period. The weather conditions during the monitoring period varied from sunny to cloudy. Major land-based construction activities included: Road and Drainage Works at Northern Landfall and Southern Landfall, UU installation at Northern Landfall and Southern Landfall and Fireboard installation in Tunnel (1/3/2020 - 30/6/2020)

Ref: 0212330_Impact AQM graphs_June 2020.xlsx



Project	Contract	Date	Station	Weather	Start time	Parameters	Results	units
TMCLKL	HY/2012/08	2020-06-01	ASR10	Sunny	13:00	1-hour TSP	30	ug/m3
TMCLKL	HY/2012/08	2020-06-01	ASR10	Sunny	14:02	1-hour TSP	72	ug/m3
TMCLKL	HY/2012/08	2020-06-01	ASR10	Sunny	15:04	1-hour TSP	22	ug/m3
TMCLKL	HY/2012/08	2020-06-01	ASR6	Sunny	13:12	1-hour TSP	122	ug/m3
TMCLKL	HY/2012/08	2020-06-01	ASR6	Sunny	14:14	1-hour TSP	121	ug/m3
TMCLKL	HY/2012/08	2020-06-01	ASR6	Sunny	15:16	1-hour TSP	85	ug/m3
TMCLKL	HY/2012/08	2020-06-01	ASR5	Sunny	13:32	1-hour TSP	93	ug/m3
TMCLKL	HY/2012/08	2020-06-01	ASR5	Sunny	14:25	1-hour TSP	113	ug/m3
TMCLKL	HY/2012/08	2020-06-01	ASR5	Sunny	15:27	1-hour TSP	82	ug/m3
TMCLKL	HY/2012/08	2020-06-01	ASR1	Sunny	13:35	1-hour TSP	45	ug/m3
TMCLKL	HY/2012/08	2020-06-01	ASR1	Sunny	14:37	1-hour TSP	33	ug/m3
TMCLKL	HY/2012/08	2020-06-01	ASR1	Sunny	15:39	1-hour TSP	47	ug/m3
TMCLKL	HY/2012/08	2020-06-01	AQMS1	Sunny	13:46	1-hour TSP	34	ug/m3
TMCLKL	HY/2012/08	2020-06-01	AQMS1	Sunny	14:48	1-hour TSP	34	ug/m3
TMCLKL	HY/2012/08	2020-06-01	AQMS1	Sunny	15:50	1-hour TSP	33	ug/m3
TMCLKL	HY/2012/08	2020-06-04	ASR10	Sunny	8:20	1-hour TSP	41	ug/m3
TMCLKL	HY/2012/08	2020-06-04	ASR10	Sunny	9:22	1-hour TSP	28	ug/m3
TMCLKL	HY/2012/08	2020-06-04	ASR10	Sunny	10:24	1-hour TSP	110	ug/m3
TMCLKL	HY/2012/08	2020-06-04	ASR6	Sunny	8:30	1-hour TSP	143	ug/m3
TMCLKL	HY/2012/08	2020-06-04	ASR6	Sunny	9:32	1-hour TSP	47	ug/m3
TMCLKL	HY/2012/08	2020-06-04	ASR6	Sunny	10:34	1-hour TSP	82	ug/m3
TMCLKL	HY/2012/08	2020-06-04	ASR5	Sunny	8:42	1-hour TSP	230	ug/m3
TMCLKL	HY/2012/08	2020-06-04	ASR5	Sunny	9:44	1-hour TSP	101	ug/m3
TMCLKL	HY/2012/08	2020-06-04	ASR5	Sunny	10:46	1-hour TSP	122	ug/m3
TMCLKL	HY/2012/08	2020-06-04	ASR1	Sunny	8:54	1-hour TSP	35	ug/m3
TMCLKL	HY/2012/08	2020-06-04	ASR1	Sunny	9:56	1-hour TSP	46	ug/m3
TMCLKL	HY/2012/08	2020-06-04	ASR1	Sunny	10:58	1-hour TSP	109	ug/m3
TMCLKL	HY/2012/08	2020-06-04	AQMS1	Sunny	9:05	1-hour TSP	68	ug/m3
TMCLKL	HY/2012/08	2020-06-04	AQMS1	Sunny	10:07	1-hour TSP	66	ug/m3
TMCLKL	HY/2012/08	2020-06-04	AQMS1	Sunny	11:09	1-hour TSP	138	ug/m3
TMCLKL	HY/2012/08	2020-06-07	ASR10	Rainy	13:01	1-hour TSP	32	ug/m3

Project	Contract	Date	Station	Weather	Start time	Parameters	Results	units
TMCLKL	HY/2012/08	2020-06-07	ASR10	Rainy	14:03	1-hour TSP	33	ug/m3
TMCLKL	HY/2012/08	2020-06-07	ASR10	Rainy	15:05	1-hour TSP	36	ug/m3
TMCLKL	HY/2012/08	2020-06-07	ASR6	Rainy	13:13	1-hour TSP	47	ug/m3
TMCLKL	HY/2012/08	2020-06-07	ASR6	Rainy	14:15	1-hour TSP	47	ug/m3
TMCLKL	HY/2012/08	2020-06-07	ASR6	Rainy	15:17	1-hour TSP	56	ug/m3
TMCLKL	HY/2012/08	2020-06-07	ASR5	Rainy	13:25	1-hour TSP	20	ug/m3
TMCLKL	HY/2012/08	2020-06-07	ASR5	Rainy	14:27	1-hour TSP	22	ug/m3
TMCLKL	HY/2012/08	2020-06-07	ASR5	Rainy	15:29	1-hour TSP	22	ug/m3
TMCLKL	HY/2012/08	2020-06-07	ASR1	Rainy	13:36	1-hour TSP	14	ug/m3
TMCLKL	HY/2012/08	2020-06-07	ASR1	Rainy	14:38	1-hour TSP	16	ug/m3
TMCLKL	HY/2012/08	2020-06-07	ASR1	Rainy	15:40	1-hour TSP	41	ug/m3
TMCLKL	HY/2012/08	2020-06-07	AQMS1	Rainy	13:47	1-hour TSP	36	ug/m3
TMCLKL	HY/2012/08	2020-06-07	AQMS1	Rainy	14:49	1-hour TSP	32	ug/m3
TMCLKL	HY/2012/08	2020-06-07	AQMS1	Rainy	15:51	1-hour TSP	48	ug/m3
TMCLKL	HY/2012/08	2020-06-10	ASR10	Sunny	13:18	1-hour TSP	68	ug/m3
TMCLKL	HY/2012/08	2020-06-10	ASR10	Sunny	14:20	1-hour TSP	42	ug/m3
TMCLKL	HY/2012/08	2020-06-10	ASR10	Sunny	15:22	1-hour TSP	44	ug/m3
TMCLKL	HY/2012/08	2020-06-10	ASR6	Sunny	13:29	1-hour TSP	189	ug/m3
TMCLKL	HY/2012/08	2020-06-10	ASR6	Sunny	14:31	1-hour TSP	91	ug/m3
TMCLKL	HY/2012/08	2020-06-10	ASR6	Sunny	15:33	1-hour TSP	85	ug/m3
TMCLKL	HY/2012/08	2020-06-10	ASR5	Sunny	13:40	1-hour TSP	165	ug/m3
TMCLKL	HY/2012/08	2020-06-10	ASR5	Sunny	14:42	1-hour TSP	137	ug/m3
TMCLKL	HY/2012/08	2020-06-10	ASR5	Sunny	15:44	1-hour TSP	111	ug/m3
TMCLKL	HY/2012/08	2020-06-10	ASR1	Sunny	13:52	1-hour TSP	71	ug/m3
TMCLKL	HY/2012/08	2020-06-10	ASR1	Sunny	14:54	1-hour TSP	52	ug/m3
TMCLKL	HY/2012/08	2020-06-10	ASR1	Sunny	15:56	1-hour TSP	41	ug/m3
TMCLKL	HY/2012/08	2020-06-10	AQMS1	Sunny	14:03	1-hour TSP	84	ug/m3
TMCLKL	HY/2012/08	2020-06-10	AQMS1	Sunny	15:05	1-hour TSP	47	ug/m3
TMCLKL	HY/2012/08	2020-06-10	AQMS1	Sunny	16:07	1-hour TSP	48	ug/m3
TMCLKL	HY/2012/08	2020-06-13	ASR10	Sunny	8:15	1-hour TSP	46	ug/m3
TMCLKL	HY/2012/08	2020-06-13	ASR10	Sunny	9:17	1-hour TSP	33	ug/m3

Project	Contract	Date	Station	Weather	Start time	Parameters	Results	units
TMCLKL	HY/2012/08	2020-06-13	ASR10	Sunny	10:19	1-hour TSP	40	ug/m3
TMCLKL	HY/2012/08	2020-06-13	ASR6	Sunny	8:26	1-hour TSP	101	ug/m3
TMCLKL	HY/2012/08	2020-06-13	ASR6	Sunny	9:28	1-hour TSP	52	ug/m3
TMCLKL	HY/2012/08	2020-06-13	ASR6	Sunny	10:30	1-hour TSP	357	ug/m3
TMCLKL	HY/2012/08	2020-06-13	ASR5	Sunny	8:38	1-hour TSP	195	ug/m3
TMCLKL	HY/2012/08	2020-06-13	ASR5	Sunny	9:40	1-hour TSP	66	ug/m3
TMCLKL	HY/2012/08	2020-06-13	ASR5	Sunny	10:42	1-hour TSP	135	ug/m3
TMCLKL	HY/2012/08	2020-06-13	ASR1	Sunny	8:50	1-hour TSP	102	ug/m3
TMCLKL	HY/2012/08	2020-06-13	ASR1	Sunny	9:52	1-hour TSP	56	ug/m3
TMCLKL	HY/2012/08	2020-06-13	ASR1	Sunny	10:54	1-hour TSP	44	ug/m3
TMCLKL	HY/2012/08	2020-06-13	AQMS1	Sunny	9:01	1-hour TSP	69	ug/m3
TMCLKL	HY/2012/08	2020-06-13	AQMS1	Sunny	10:03	1-hour TSP	40	ug/m3
TMCLKL	HY/2012/08	2020-06-13	AQMS1	Sunny	11:05	1-hour TSP	51	ug/m3
TMCLKL	HY/2012/08	2020-06-16	ASR10	Sunny	8:08	1-hour TSP	32	ug/m3
TMCLKL	HY/2012/08	2020-06-16	ASR10	Sunny	9:10	1-hour TSP	26	ug/m3
TMCLKL	HY/2012/08	2020-06-16	ASR10	Sunny	10:12	1-hour TSP	35	ug/m3
TMCLKL	HY/2012/08	2020-06-16	ASR6	Sunny	8:20	1-hour TSP	63	ug/m3
TMCLKL	HY/2012/08	2020-06-16	ASR6	Sunny	9:22	1-hour TSP	55	ug/m3
TMCLKL	HY/2012/08	2020-06-16	ASR6	Sunny	10:24	1-hour TSP	96	ug/m3
TMCLKL	HY/2012/08	2020-06-16	ASR5	Sunny	8:30	1-hour TSP	156	ug/m3
TMCLKL	HY/2012/08	2020-06-16	ASR5	Sunny	9:32	1-hour TSP	77	ug/m3
TMCLKL	HY/2012/08	2020-06-16	ASR5	Sunny	10:34	1-hour TSP	81	ug/m3
TMCLKL	HY/2012/08	2020-06-16	ASR1	Sunny	8:43	1-hour TSP	82	ug/m3
TMCLKL	HY/2012/08	2020-06-16	ASR1	Sunny	9:45	1-hour TSP	57	ug/m3
TMCLKL	HY/2012/08	2020-06-16	ASR1	Sunny	10:47	1-hour TSP	49	ug/m3
TMCLKL	HY/2012/08	2020-06-16	AQMS1	Sunny	8:55	1-hour TSP	93	ug/m3
TMCLKL	HY/2012/08	2020-06-16	AQMS1	Sunny	9:57	1-hour TSP	71	ug/m3
TMCLKL	HY/2012/08	2020-06-16	AQMS1	Sunny	10:59	1-hour TSP	43	ug/m3
TMCLKL	HY/2012/08	2020-06-19	ASR10	Sunny	8:13	1-hour TSP	26	ug/m3
TMCLKL	HY/2012/08	2020-06-19	ASR10	Sunny	9:15	1-hour TSP	29	ug/m3
TMCLKL	HY/2012/08	2020-06-19	ASR10	Sunny	10:17	1-hour TSP	58	ug/m3

Project	Contract	Date	Station	Weather	Start time	Parameters	Results	units
TMCLKL	HY/2012/08	2020-06-19	ASR6	Sunny	8:26	1-hour TSP	101	ug/m3
TMCLKL	HY/2012/08	2020-06-19	ASR6	Sunny	9:28	1-hour TSP	114	ug/m3
TMCLKL	HY/2012/08	2020-06-19	ASR6	Sunny	10:30	1-hour TSP	77	ug/m3
TMCLKL	HY/2012/08	2020-06-19	ASR5	Sunny	8:38	1-hour TSP	131	ug/m3
TMCLKL	HY/2012/08	2020-06-19	ASR5	Sunny	9:40	1-hour TSP	212	ug/m3
TMCLKL	HY/2012/08	2020-06-19	ASR5	Sunny	10:42	1-hour TSP	157	ug/m3
TMCLKL	HY/2012/08	2020-06-19	ASR1	Sunny	8:49	1-hour TSP	37	ug/m3
TMCLKL	HY/2012/08	2020-06-19	ASR1	Sunny	9:51	1-hour TSP	85	ug/m3
TMCLKL	HY/2012/08	2020-06-19	ASR1	Sunny	10:53	1-hour TSP	86	ug/m3
TMCLKL	HY/2012/08	2020-06-19	AQMS1	Sunny	9:00	1-hour TSP	56	ug/m3
TMCLKL	HY/2012/08	2020-06-19	AQMS1	Sunny	10:02	1-hour TSP	60	ug/m3
TMCLKL	HY/2012/08	2020-06-19	AQMS1	Sunny	11:04	1-hour TSP	84	ug/m3
TMCLKL	HY/2012/08	2020-06-22	ASR10	Sunny	8:07	1-hour TSP	47	ug/m3
TMCLKL	HY/2012/08	2020-06-22	ASR10	Sunny	9:09	1-hour TSP	49	ug/m3
TMCLKL	HY/2012/08	2020-06-22	ASR10	Sunny	10:11	1-hour TSP	83	ug/m3
TMCLKL	HY/2012/08	2020-06-22	ASR6	Sunny	8:18	1-hour TSP	149	ug/m3
TMCLKL	HY/2012/08	2020-06-22	ASR6	Sunny	9:20	1-hour TSP	123	ug/m3
TMCLKL	HY/2012/08	2020-06-22	ASR6	Sunny	10:22	1-hour TSP	179	ug/m3
TMCLKL	HY/2012/08	2020-06-22	ASR5	Sunny	8:29	1-hour TSP	178	ug/m3
TMCLKL	HY/2012/08	2020-06-22	ASR5	Sunny	9:31	1-hour TSP	130	ug/m3
TMCLKL	HY/2012/08	2020-06-22	ASR5	Sunny	10:33	1-hour TSP	223	ug/m3
TMCLKL	HY/2012/08	2020-06-22	ASR1	Sunny	8:41	1-hour TSP	104	ug/m3
TMCLKL	HY/2012/08	2020-06-22	ASR1	Sunny	9:43	1-hour TSP	101	ug/m3
TMCLKL	HY/2012/08	2020-06-22	ASR1	Sunny	10:45	1-hour TSP	117	ug/m3
TMCLKL	HY/2012/08	2020-06-22	AQMS1	Sunny	8:53	1-hour TSP	92	ug/m3
TMCLKL	HY/2012/08	2020-06-22	AQMS1	Sunny	9:55	1-hour TSP	59	ug/m3
TMCLKL	HY/2012/08	2020-06-22	AQMS1	Sunny	10:57	1-hour TSP	92	ug/m3
TMCLKL	HY/2012/08	2020-06-25	ASR10	Sunny	8:10	1-hour TSP	64	ug/m3
TMCLKL	HY/2012/08	2020-06-25	ASR10	Sunny	9:12	1-hour TSP	65	ug/m3
TMCLKL	HY/2012/08	2020-06-25	ASR10	Sunny	10:14	1-hour TSP	60	ug/m3
TMCLKL	HY/2012/08	2020-06-25	ASR6	Sunny	08:20	1-hour TSP	67	ug/m3

Project	Contract	Date	Station	Weather	Start time	Parameters	Results	units
TMCLKL	HY/2012/08	2020-06-25	ASR6	Sunny	09:22	1-hour TSP	51	ug/m3
TMCLKL	HY/2012/08	2020-06-25	ASR6	Sunny	10:24	1-hour TSP	70	ug/m3
TMCLKL	HY/2012/08	2020-06-25	ASR5	Sunny	8:32	1-hour TSP	78	ug/m3
TMCLKL	HY/2012/08	2020-06-25	ASR5	Sunny	9:34	1-hour TSP	86	ug/m3
TMCLKL	HY/2012/08	2020-06-25	ASR5	Sunny	10:36	1-hour TSP	89	ug/m3
TMCLKL	HY/2012/08	2020-06-25	ASR1	Sunny	8:44	1-hour TSP	63	ug/m3
TMCLKL	HY/2012/08	2020-06-25	ASR1	Sunny	9:46	1-hour TSP	56	ug/m3
TMCLKL	HY/2012/08	2020-06-25	ASR1	Sunny	10:48	1-hour TSP	59	ug/m3
TMCLKL	HY/2012/08	2020-06-25	AQMS1	Sunny	8:55	1-hour TSP	52	ug/m3
TMCLKL	HY/2012/08	2020-06-25	AQMS1	Sunny	9:57	1-hour TSP	68	ug/m3
TMCLKL	HY/2012/08	2020-06-25	AQMS1	Sunny	10:59	1-hour TSP	71	ug/m3
TMCLKL	HY/2012/08	2020-06-28	ASR10	Sunny	8:18	1-hour TSP	43	ug/m3
TMCLKL	HY/2012/08	2020-06-28	ASR10	Sunny	9:20	1-hour TSP	51	ug/m3
TMCLKL	HY/2012/08	2020-06-28	ASR10	Sunny	10:22	1-hour TSP	46	ug/m3
TMCLKL	HY/2012/08	2020-06-28	ASR6	Sunny	8:30	1-hour TSP	80	ug/m3
TMCLKL	HY/2012/08	2020-06-28	ASR6	Sunny	9:32	1-hour TSP	59	ug/m3
TMCLKL	HY/2012/08	2020-06-28	ASR6	Sunny	10:34	1-hour TSP	54	ug/m3
TMCLKL	HY/2012/08	2020-06-28	ASR5	Sunny	8:40	1-hour TSP	93	ug/m3
TMCLKL	HY/2012/08	2020-06-28	ASR5	Sunny	9:42	1-hour TSP	87	ug/m3
TMCLKL	HY/2012/08	2020-06-28	ASR5	Sunny	10:44	1-hour TSP	64	ug/m3
TMCLKL	HY/2012/08	2020-06-28	ASR1	Sunny	8:53	1-hour TSP	55	ug/m3
TMCLKL	HY/2012/08	2020-06-28	ASR1	Sunny	9:55	1-hour TSP	72	ug/m3
TMCLKL	HY/2012/08	2020-06-28	ASR1	Sunny	10:37	1-hour TSP	52	ug/m3
TMCLKL	HY/2012/08	2020-06-28	AQMS1	Sunny	9:04	1-hour TSP	68	ug/m3
TMCLKL	HY/2012/08	2020-06-28	AQMS1	Sunny	10:06	1-hour TSP	77	ug/m3
TMCLKL	HY/2012/08	2020-06-28	AQMS1	Sunny	11:08	1-hour TSP	87	ug/m3
TMCLKL	HY/2012/08	2020-06-01	ASR10	Sunny	16:06	24-hour TSP	24	ug/m3
TMCLKL	HY/2012/08	2020-06-01	ASR6	Sunny	16:18	24-hour TSP	55	ug/m3
TMCLKL	HY/2012/08	2020-06-01	ASR5	Sunny	16:29	24-hour TSP	67	ug/m3
TMCLKL	HY/2012/08	2020-06-01	ASR1	Sunny	16:41	24-hour TSP	34	ug/m3
TMCLKL	HY/2012/08	2020-06-01	AQMS1	Sunny	16:52	24-hour TSP	45	ug/m3

Project	Contract	Date	Station	Weather	Start time	Parameters	Results	units
TMCLKL	HY/2012/08	2020-06-04	ASR10	Sunny	11:26	24-hour TSP	32	ug/m3
TMCLKL	HY/2012/08	2020-06-04	ASR6	Sunny	11:36	24-hour TSP	92	ug/m3
TMCLKL	HY/2012/08	2020-06-04	ASR5	Sunny	11:48	24-hour TSP	85	ug/m3
TMCLKL	HY/2012/08	2020-06-04	ASR1	Sunny	12:00	24-hour TSP	41	ug/m3
TMCLKL	HY/2012/08	2020-06-04	AQMS1	Sunny	12:11	24-hour TSP	49	ug/m3
TMCLKL	HY/2012/08	2020-06-07	ASR10	Rainy	16:07	24-hour TSP	32	ug/m3
TMCLKL	HY/2012/08	2020-06-07	ASR6	Rainy	16:19	24-hour TSP	31	ug/m3
TMCLKL	HY/2012/08	2020-06-07	ASR5	Rainy	16:31	24-hour TSP	36	ug/m3
TMCLKL	HY/2012/08	2020-06-07	ASR1	Rainy	16:42	24-hour TSP	26	ug/m3
TMCLKL	HY/2012/08	2020-06-07	AQMS1	Rainy	16:53	24-hour TSP	35	ug/m3
TMCLKL	HY/2012/08	2020-06-10	ASR10	Sunny	16:24	24-hour TSP	25	ug/m3
TMCLKL	HY/2012/08	2020-06-10	ASR6	Sunny	16:35	24-hour TSP	47	ug/m3
TMCLKL	HY/2012/08	2020-06-10	ASR5	Sunny	16:46	24-hour TSP	85	ug/m3
TMCLKL	HY/2012/08	2020-06-10	ASR1	Sunny	16:58	24-hour TSP	31	ug/m3
TMCLKL	HY/2012/08	2020-06-10	AQMS1	Sunny	17:09	24-hour TSP	29	ug/m3
TMCLKL	HY/2012/08	2020-06-13	ASR10	Sunny	11:21	24-hour TSP	20	ug/m3
TMCLKL	HY/2012/08	2020-06-13	ASR6	Sunny	11:32	24-hour TSP	27	ug/m3
TMCLKL	HY/2012/08	2020-06-13	ASR5	Sunny	11:44	24-hour TSP	40	ug/m3
TMCLKL	HY/2012/08	2020-06-13	ASR1	Sunny	11:56	24-hour TSP	33	ug/m3
TMCLKL	HY/2012/08	2020-06-13	AQMS1	Sunny	12:07	24-hour TSP	27	ug/m3
TMCLKL	HY/2012/08	2020-06-16	ASR10	Sunny	11:14	24-hour TSP	19	ug/m3
TMCLKL	HY/2012/08	2020-06-16	ASR6	Sunny	11:26	24-hour TSP	49	ug/m3
TMCLKL	HY/2012/08	2020-06-16	ASR5	Sunny	11:36	24-hour TSP	58	ug/m3
TMCLKL	HY/2012/08	2020-06-16	ASR1	Sunny	11:49	24-hour TSP	36	ug/m3
TMCLKL	HY/2012/08	2020-06-16	AQMS1	Sunny	11:01	24-hour TSP	51	ug/m3
TMCLKL	HY/2012/08	2020-06-19	ASR10	Sunny	11:19	24-hour TSP	32	ug/m3
TMCLKL	HY/2012/08	2020-06-19	ASR6	Sunny	11:32	24-hour TSP	55	ug/m3
TMCLKL	HY/2012/08	2020-06-19	ASR5	Sunny	11:44	24-hour TSP	91	ug/m3
TMCLKL	HY/2012/08	2020-06-19	ASR1	Sunny	11:55	24-hour TSP	45	ug/m3
TMCLKL	HY/2012/08	2020-06-19	AQMS1	Sunny	12:06	24-hour TSP	45	ug/m3
TMCLKL	HY/2012/08	2020-06-22	ASR10	Sunny	11:14	24-hour TSP	55	ug/m3

Project	Contract	Date	Station	Weather	Start time	Parameters	Results	units
TMCLKL	HY/2012/08	2020-06-22	ASR6	Sunny	11:24	24-hour TSP	75	ug/m3
TMCLKL	HY/2012/08	2020-06-22	ASR5	Sunny	11:35	24-hour TSP	89	ug/m3
TMCLKL	HY/2012/08	2020-06-22	ASR1	Sunny	11:47	24-hour TSP	54	ug/m3
TMCLKL	HY/2012/08	2020-06-22	AQMS1	Sunny	11:59	24-hour TSP	48	ug/m3
TMCLKL	HY/2012/08	2020-06-25	ASR10	Sunny	11:16	24-hour TSP	46	ug/m3
TMCLKL	HY/2012/08	2020-06-25	ASR6	Sunny	11:26	24-hour TSP	52	ug/m3
TMCLKL	HY/2012/08	2020-06-25	ASR5	Sunny	11:38	24-hour TSP	61	ug/m3
TMCLKL	HY/2012/08	2020-06-25	ASR1	Sunny	11:50	24-hour TSP	40	ug/m3
TMCLKL	HY/2012/08	2020-06-25	AQMS1	Sunny	12:01	24-hour TSP	43	ug/m3
TMCLKL	HY/2012/08	2020-06-28	ASR10	Sunny	11:24	24-hour TSP	33	ug/m3
TMCLKL	HY/2012/08	2020-06-28	ASR6	Sunny	11:36	24-hour TSP	25	ug/m3
TMCLKL	HY/2012/08	2020-06-28	ASR5	Sunny	11:46	24-hour TSP	52	ug/m3
TMCLKL	HY/2012/08	2020-06-28	ASR1	Sunny	11:59	24-hour TSP	60	ug/m3
TMCLKL	HY/2012/08	2020-06-28	AQMS1	Sunny	12:10	24-hour TSP	37	ug/m3