

Appendix I

# Operational Phase Dolphin Monitoring Survey

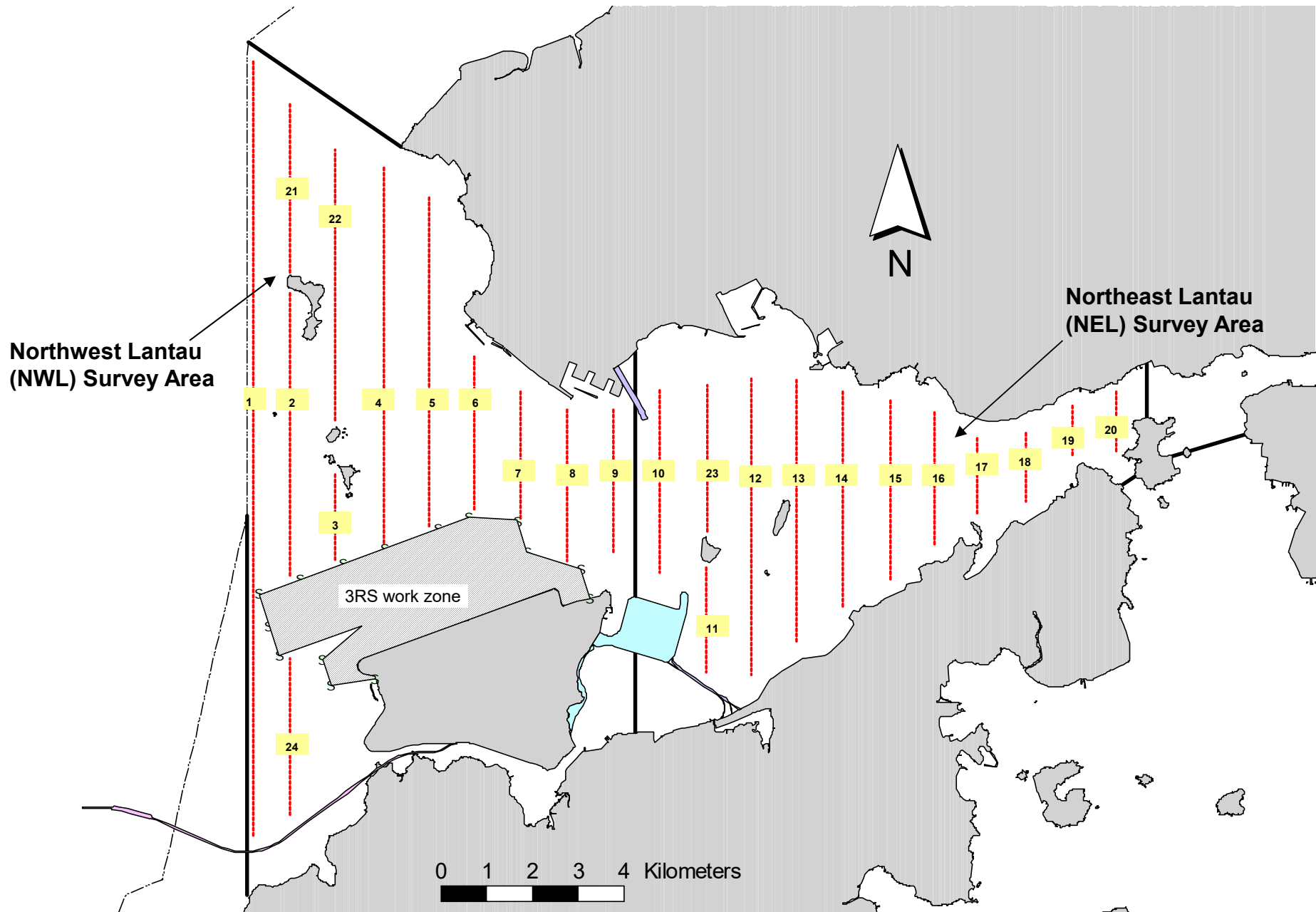


Figure 1. Transect Line Layout in Northwest and Northeast Lantau Survey Areas



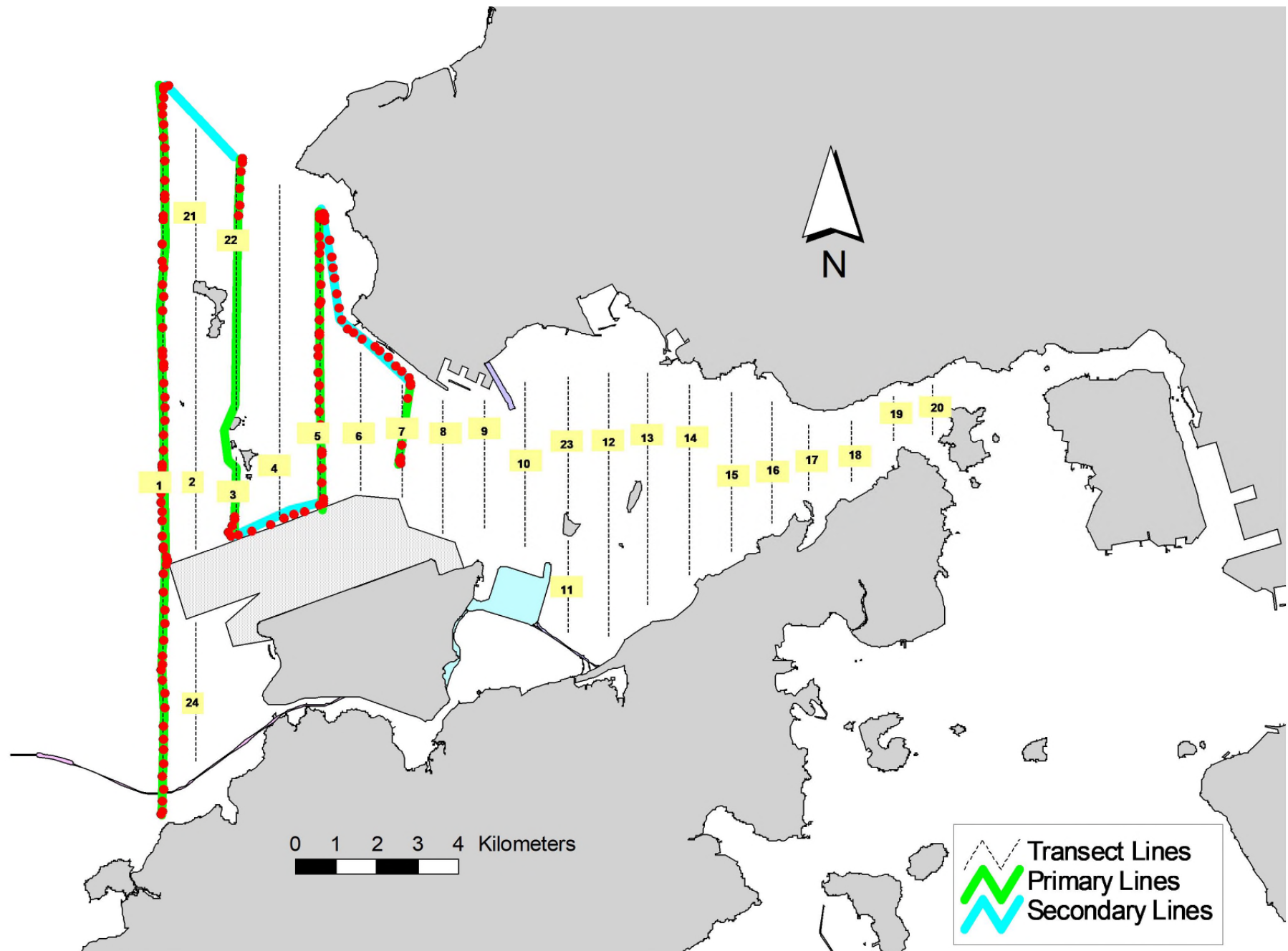


Figure 3. Survey Route on November 9<sup>th</sup>, 2020

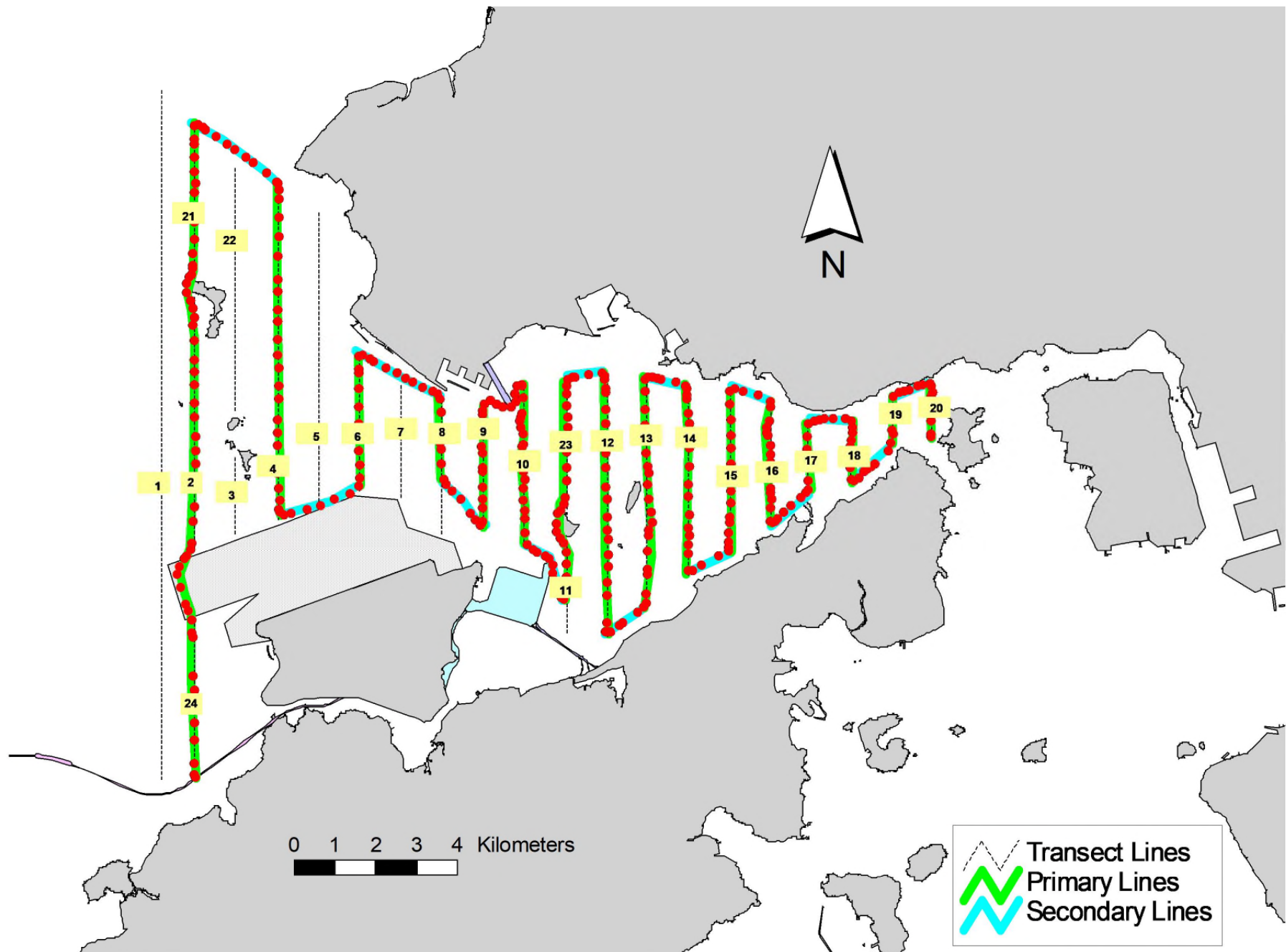


Figure 4. Survey Route on November 17<sup>th</sup>, 2020

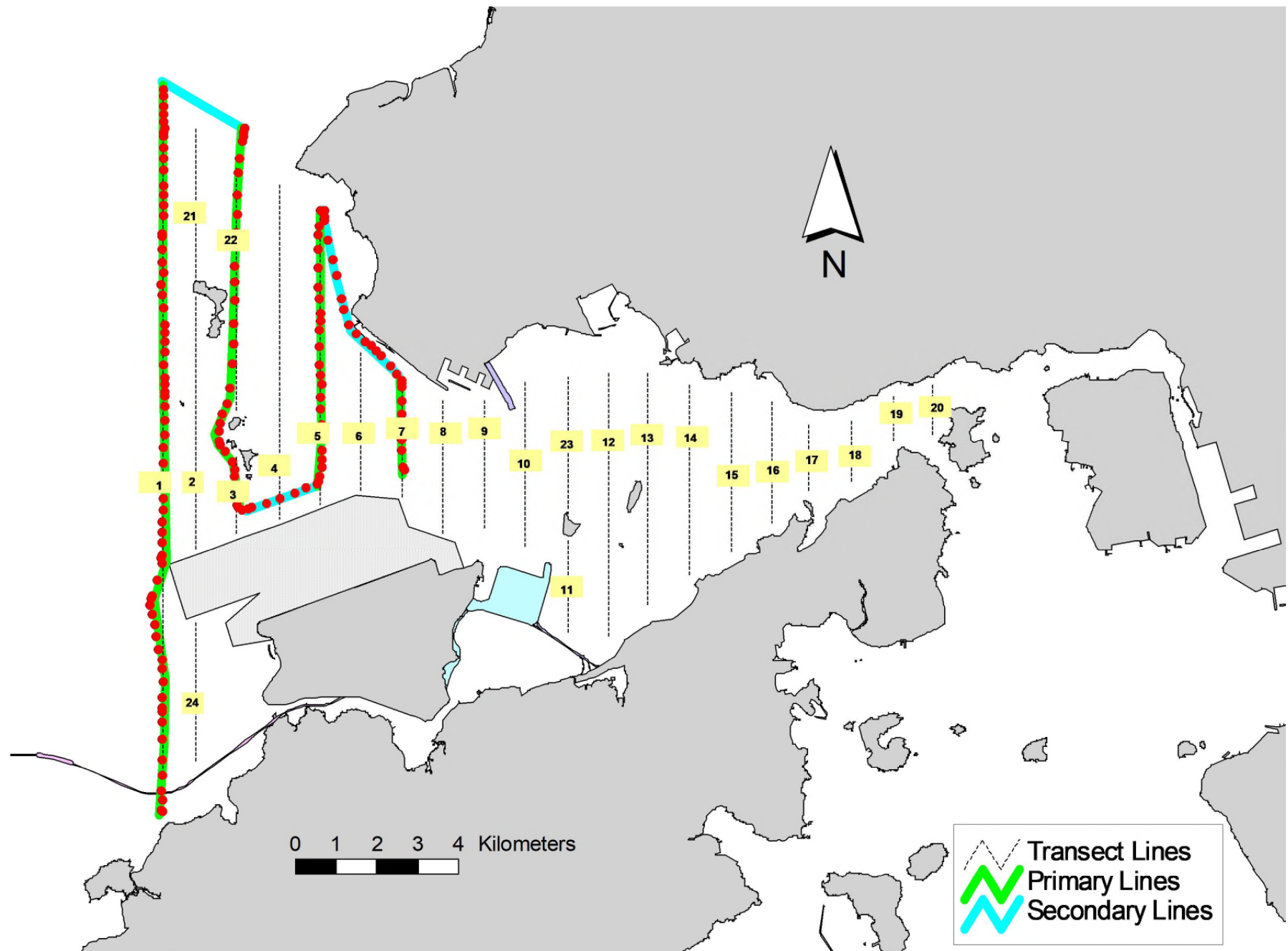


Figure 5. Survey Route on November 23<sup>rd</sup>, 2020

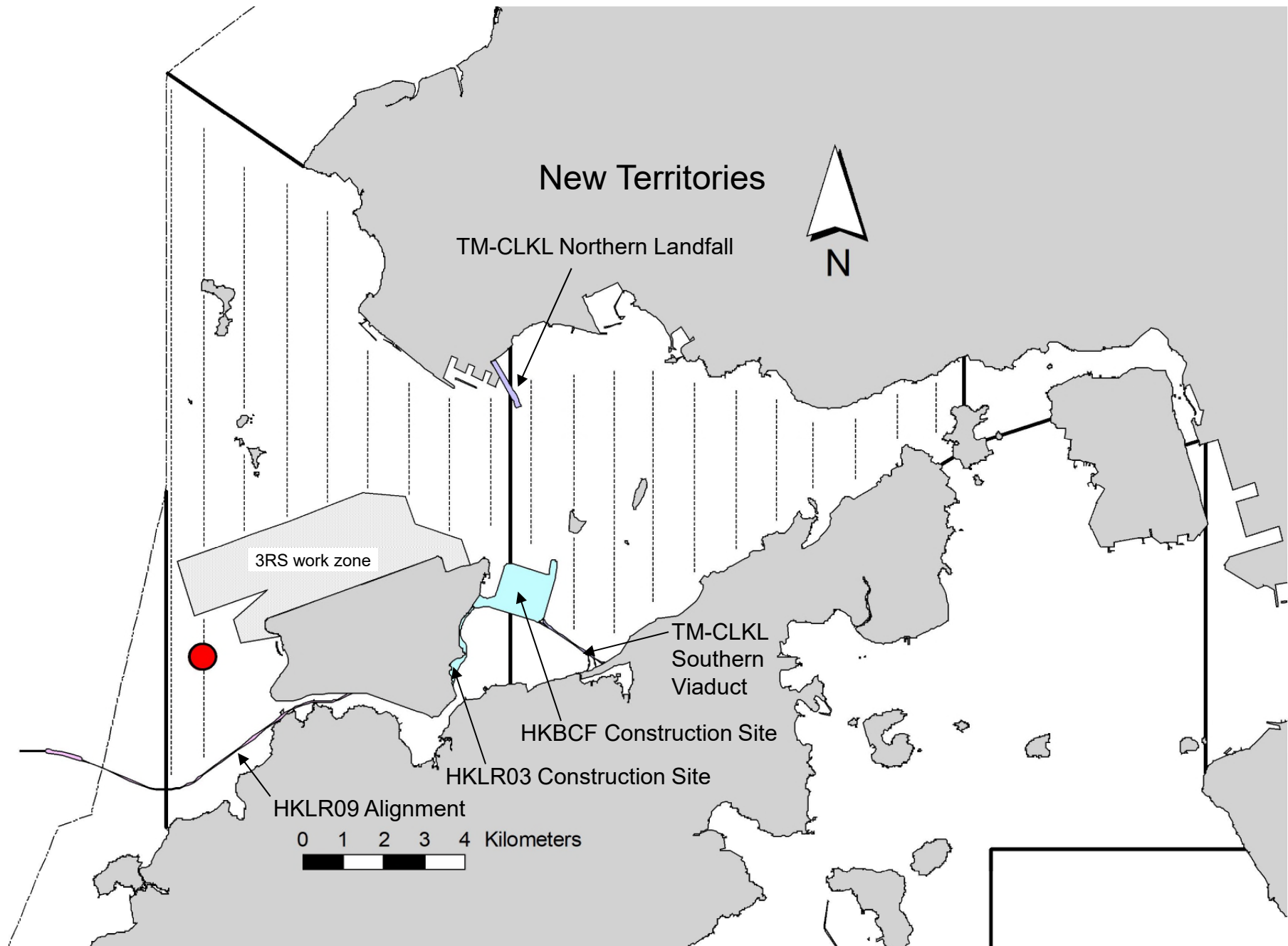


Figure 6. Distribution of Chinese White Dolphin Sightings during November 2020 Monitoring Surveys

## Appendix I. TMCLKL Survey Effort Database (November 2020)

(Abbreviations: BEAU = Beaufort Sea State; P = Primary Line Effort; S = Secondary Line Effort)

DATE	AREA	BEAU	EFFORT	SEASON	VESSEL	TYPE	P/S
4-Nov-20	NW LANTAU	2	19.01	AUTUMN	STANDARD36826	TMCLKL	P
4-Nov-20	NW LANTAU	3	9.69	AUTUMN	STANDARD36826	TMCLKL	P
4-Nov-20	NW LANTAU	2	7.30	AUTUMN	STANDARD36826	TMCLKL	S
4-Nov-20	NW LANTAU	3	3.10	AUTUMN	STANDARD36826	TMCLKL	S
4-Nov-20	NE LANTAU	2	34.20	AUTUMN	STANDARD36826	TMCLKL	P
4-Nov-20	NE LANTAU	3	2.70	AUTUMN	STANDARD36826	TMCLKL	P
4-Nov-20	NE LANTAU	2	12.50	AUTUMN	STANDARD36826	TMCLKL	S
4-Nov-20	NE LANTAU	3	1.00	AUTUMN	STANDARD36826	TMCLKL	S
9-Nov-20	NW LANTAU	2	12.64	AUTUMN	STANDARD36826	TMCLKL	P
9-Nov-20	NW LANTAU	3	19.96	AUTUMN	STANDARD36826	TMCLKL	P
9-Nov-20	NW LANTAU	2	7.26	AUTUMN	STANDARD36826	TMCLKL	S
9-Nov-20	NW LANTAU	3	1.54	AUTUMN	STANDARD36826	TMCLKL	S
17-Nov-20	NW LANTAU	2	3.80	AUTUMN	STANDARD36826	TMCLKL	P
17-Nov-20	NW LANTAU	3	24.32	AUTUMN	STANDARD36826	TMCLKL	P
17-Nov-20	NW LANTAU	2	3.47	AUTUMN	STANDARD36826	TMCLKL	S
17-Nov-20	NW LANTAU	3	7.33	AUTUMN	STANDARD36826	TMCLKL	S
17-Nov-20	NE LANTAU	2	32.10	AUTUMN	STANDARD36826	TMCLKL	P
17-Nov-20	NE LANTAU	3	3.38	AUTUMN	STANDARD36826	TMCLKL	P
17-Nov-20	NE LANTAU	2	12.72	AUTUMN	STANDARD36826	TMCLKL	S
23-Nov-20	NW LANTAU	2	11.30	AUTUMN	STANDARD36826	TMCLKL	P
23-Nov-20	NW LANTAU	3	20.90	AUTUMN	STANDARD36826	TMCLKL	P
23-Nov-20	NW LANTAU	2	8.30	AUTUMN	STANDARD36826	TMCLKL	S



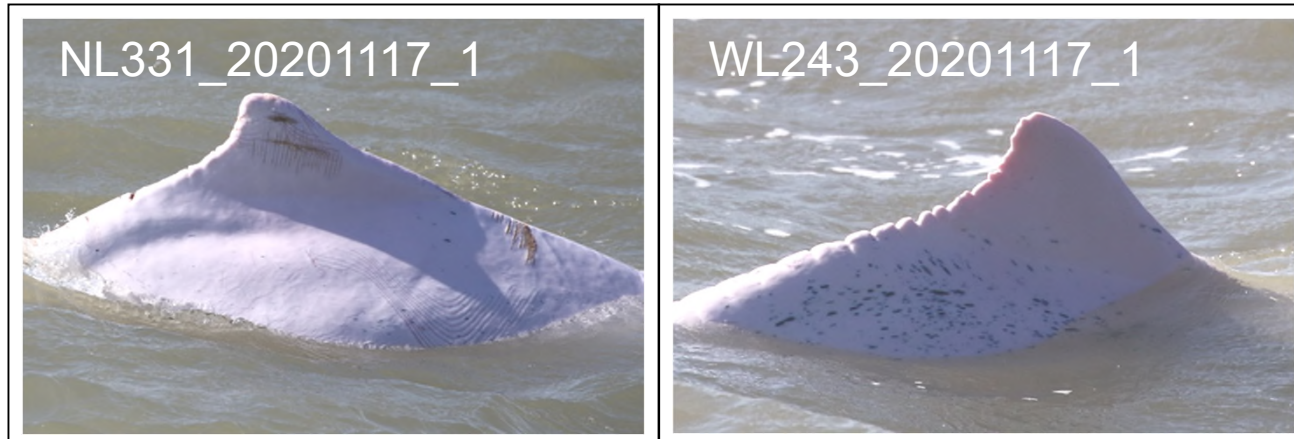
**Appendix II. TMCLKL Chinese White Dolphin Sighting Database (November 2020)**

(Abberviations: STG# = Sighting Number; HRD SZ = Dolphin Herd Size; BEAU = Beaufort Sea State; PSD = Perpendicular Distance; BOAT ASSOC. = Fishing Boat Association; P/S: Sighting Made on Primary/Secondary Lines)

DATE	STG #	TIME	HRD SZ	AREA	BEAU	PSD	EFFORT	TYPE	NORTHING	EASTING	SEASON	BOAT ASSOC.	P/S
17-Nov-20	1	1018	2	NW LANTAU	3	105	ON	TMCLKL	818225	805409	AUTUMN	NONE	P

**Appendix III. Individual dolphins identified during TMCLKL monitoring surveys in (November 2020)**

<b>ID#</b>	<b>DATE</b>	<b>STG#</b>	<b>AREA</b>
NL331	17/11/20	1	NW LANTAU
WL243	17/11/20	1	NW LANTAU



Appendix IV. Photograph of Identified Individual Dolphin in November 2020 (TMCLKL)