

Appendix I

# Operational Phase Dolphin Monitoring Survey



Figure 1. Transect Line Layout in Northwest and Northeast Lantau Survey Areas

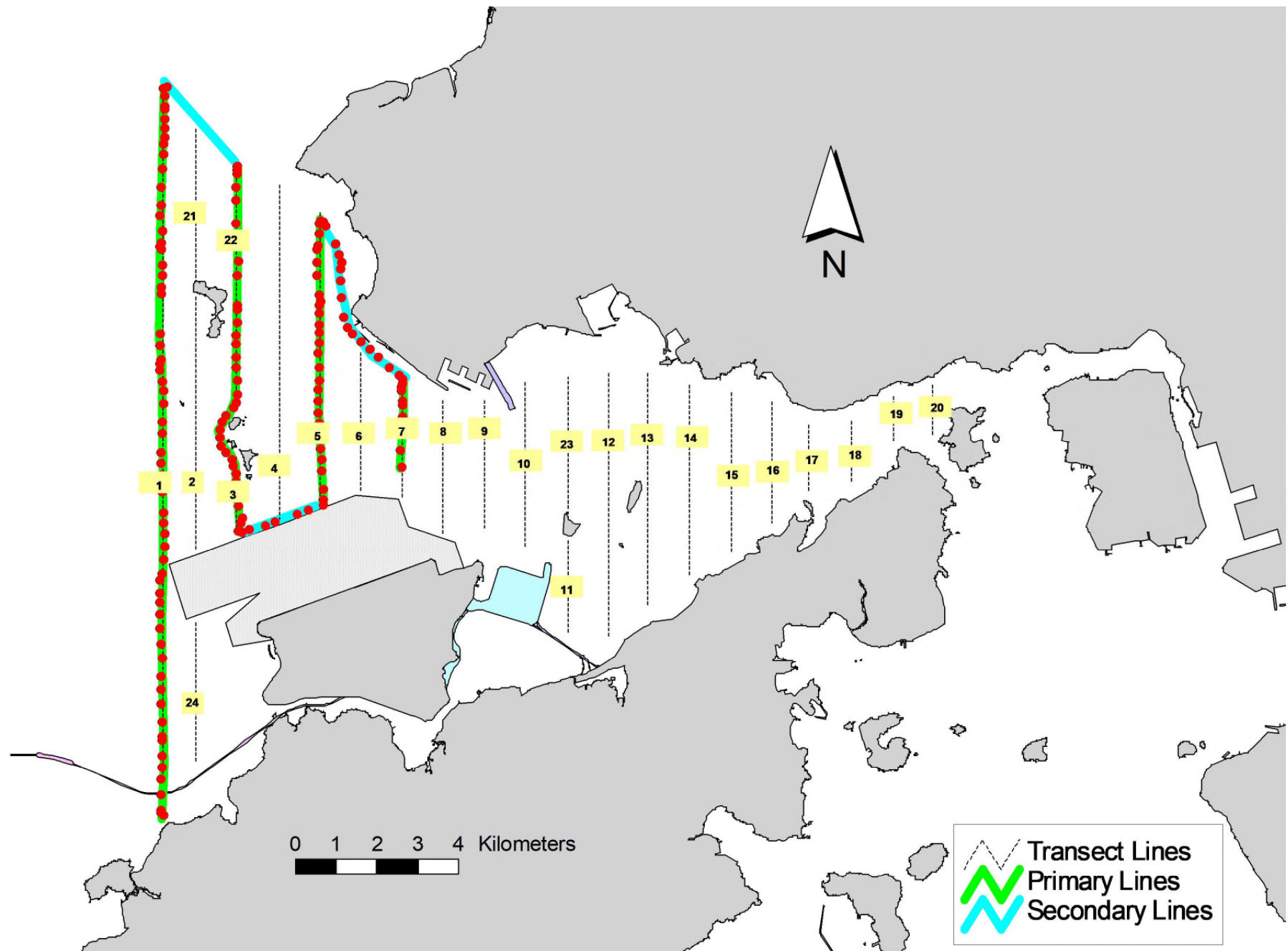


Figure 2. Survey Route on January 25<sup>th</sup>, 2021

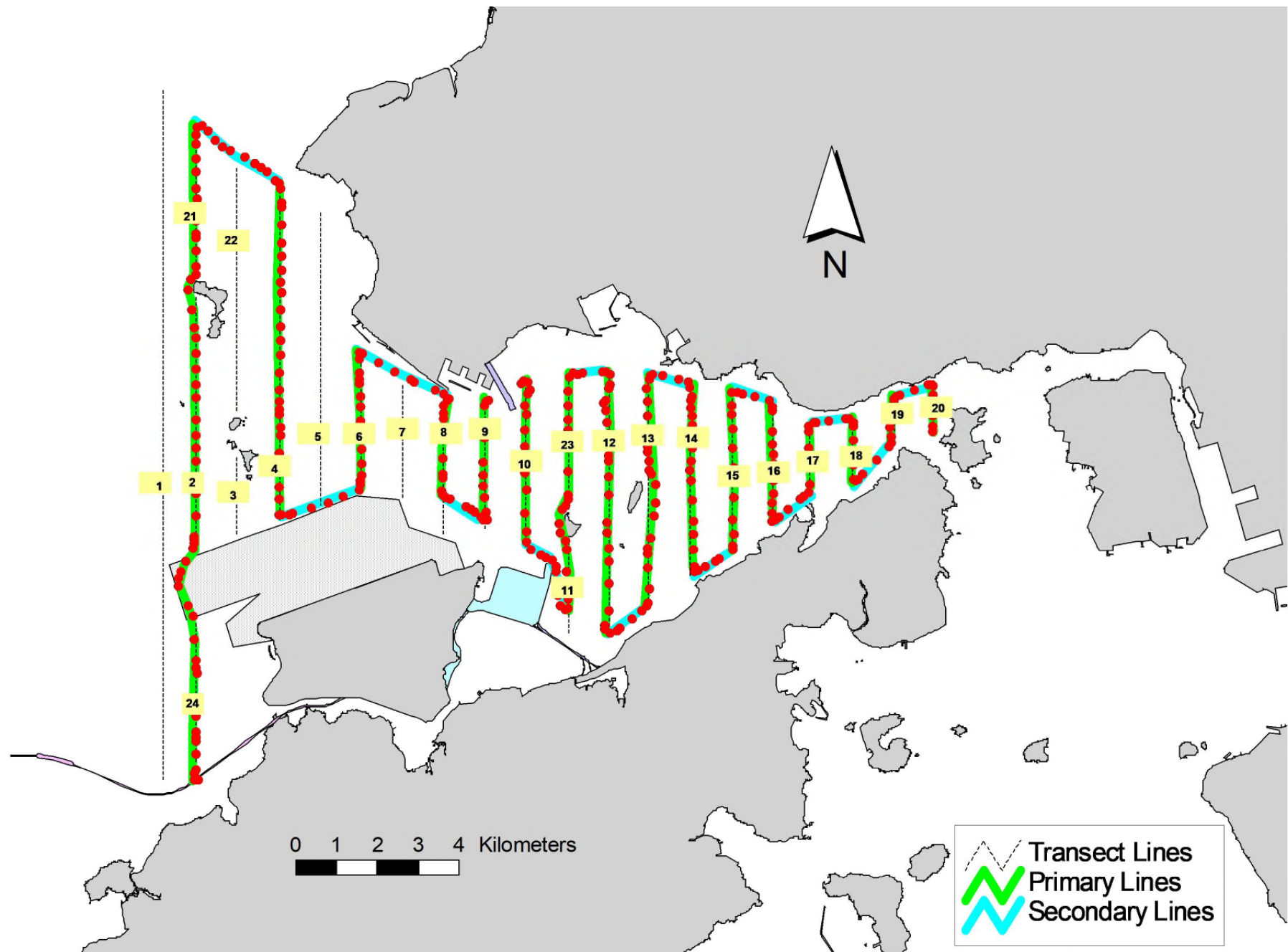


Figure 3. Survey Route on January 26<sup>th</sup>, 2021

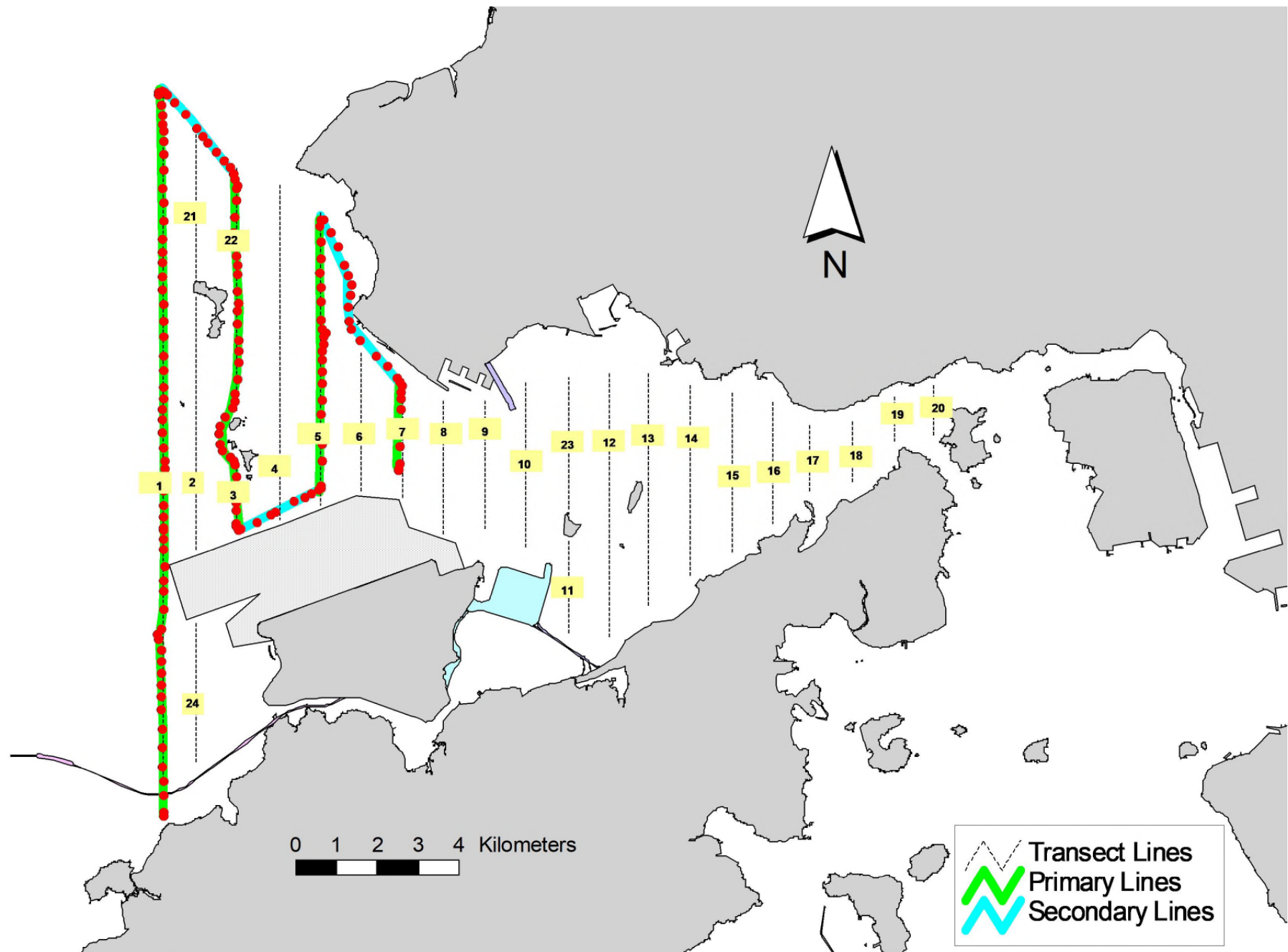


Figure 4. Survey Route on January 27<sup>th</sup>, 2021

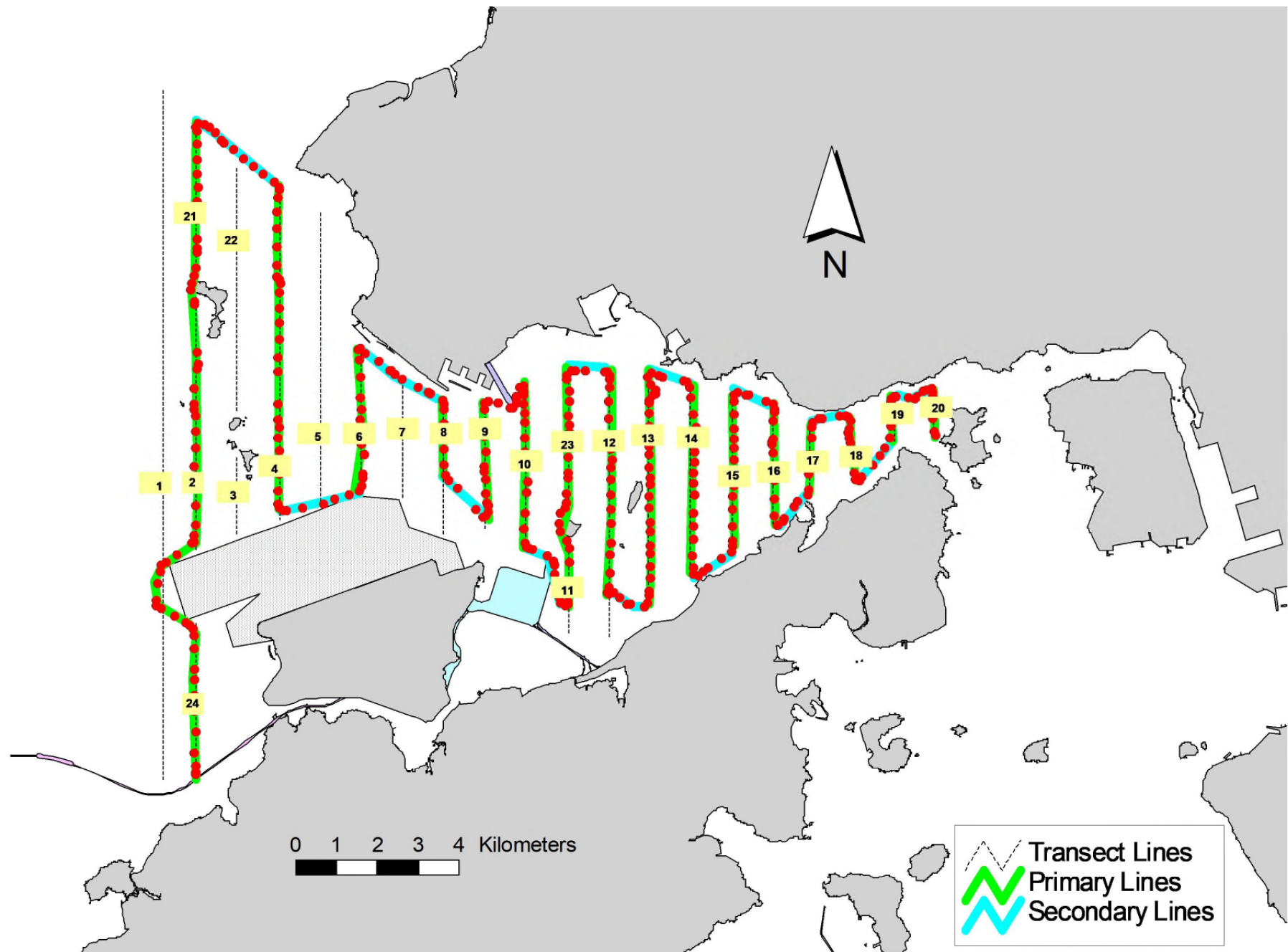


Figure 5. Survey Route on January 28<sup>th</sup>, 2021

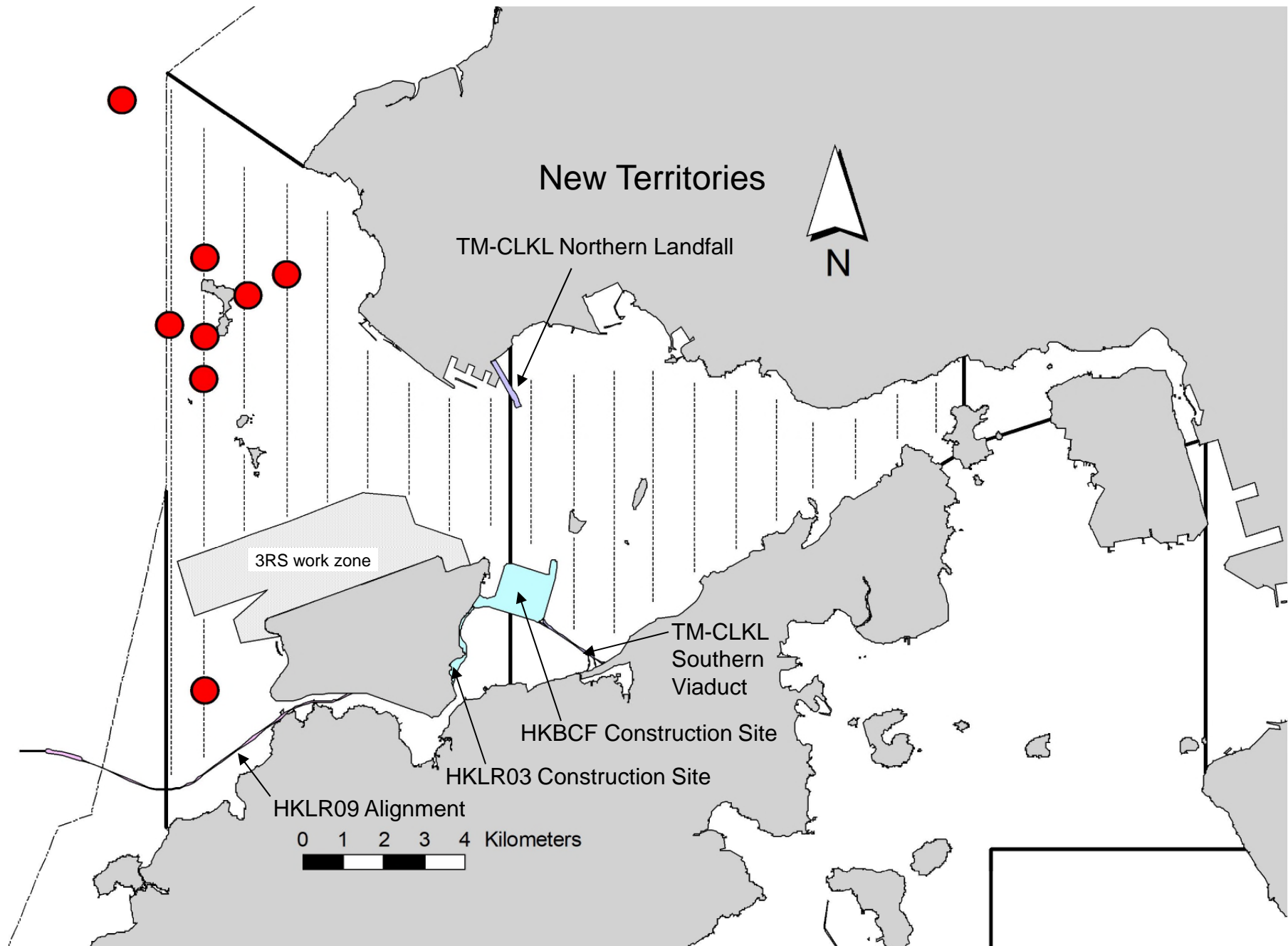


Figure 6. Distribution of Chinese White Dolphin Sightings during January 2021 Monitoring Surveys

## Appendix I. TMCLKL Survey Effort Database (January 2021)

(Abbreviations: BEAU = Beaufort Sea State; P = Primary Line Effort; S = Secondary Line Effort)

DATE	AREA	BEAU	EFFORT	SEASON	VESSEL	TYPE	P/S
25-Jan-21	NW LANTAU	1	4.08	WINTER	STANDARD36826	TMCLKL	P
25-Jan-21	NW LANTAU	2	28.26	WINTER	STANDARD36826	TMCLKL	P
25-Jan-21	NW LANTAU	2	8.25	WINTER	STANDARD36826	TMCLKL	S
26-Jan-21	NW LANTAU	1	4.74	WINTER	STANDARD36826	TMCLKL	P
26-Jan-21	NW LANTAU	2	24.42	WINTER	STANDARD36826	TMCLKL	P
26-Jan-21	NW LANTAU	1	1.50	WINTER	STANDARD36826	TMCLKL	S
26-Jan-21	NW LANTAU	2	8.81	WINTER	STANDARD36826	TMCLKL	S
26-Jan-21	NE LANTAU	1	2.60	WINTER	STANDARD36826	TMCLKL	P
26-Jan-21	NE LANTAU	2	33.98	WINTER	STANDARD36826	TMCLKL	P
26-Jan-21	NE LANTAU	1	2.30	WINTER	STANDARD36826	TMCLKL	S
26-Jan-21	NE LANTAU	2	9.92	WINTER	STANDARD36826	TMCLKL	S
27-Jan-21	NW LANTAU	1	6.50	WINTER	STANDARD36826	TMCLKL	P
27-Jan-21	NW LANTAU	2	26.15	WINTER	STANDARD36826	TMCLKL	P
27-Jan-21	NW LANTAU	1	3.90	WINTER	STANDARD36826	TMCLKL	S
27-Jan-21	NW LANTAU	2	6.75	WINTER	STANDARD36826	TMCLKL	S
28-Jan-21	NW LANTAU	1	0.52	WINTER	STANDARD36826	TMCLKL	P
28-Jan-21	NW LANTAU	2	22.11	WINTER	STANDARD36826	TMCLKL	P
28-Jan-21	NW LANTAU	3	3.73	WINTER	STANDARD36826	TMCLKL	P
28-Jan-21	NW LANTAU	1	2.53	WINTER	STANDARD36826	TMCLKL	S
28-Jan-21	NW LANTAU	2	9.50	WINTER	STANDARD36826	TMCLKL	S
28-Jan-21	NE LANTAU	2	21.46	WINTER	STANDARD36826	TMCLKL	P
28-Jan-21	NE LANTAU	3	14.01	WINTER	STANDARD36826	TMCLKL	P
28-Jan-21	NE LANTAU	2	8.40	WINTER	STANDARD36826	TMCLKL	S
28-Jan-21	NE LANTAU	3	4.03	WINTER	STANDARD36826	TMCLKL	S



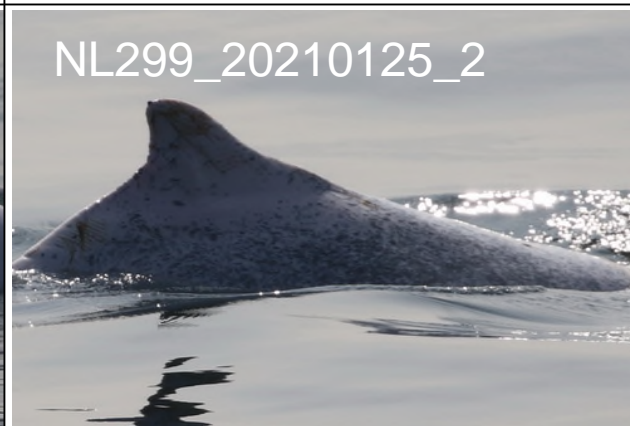
**Appendix II. TMCLKL Chinese White Dolphin Sighting Database (January 2021)**

(Abbreviations: STG# = Sighting Number; HRD SZ = Dolphin Herd Size; BEAU = Beaufort Sea State; PSD = Perpendicular Distance; BOAT ASSOC. = Fishing Boat Association; P/S: Sighting Made on Primary/Secondary Lines)

DATE	STG #	TIME	HRD SZ	AREA	BEAU	PSD	EFFORT	TYPE	NORTHING	EASTING	SEASON	BOAT ASSOC.	P/S
25-Jan-21	1	1057	1	NW LANTAU	2	237	ON	TMCLKL	825934	804590	WINTER	NONE	P
25-Jan-21	2	1123	8	NW LANTAU	2	852	ON	TMCLKL	831175	803417	WINTER	NONE	P
25-Jan-21	3	1329	2	NW LANTAU	2	165	ON	TMCLKL	826628	806507	WINTER	NONE	P
26-Jan-21	1	1013	1	NW LANTAU	1	55	ON	TMCLKL	817461	805469	WINTER	NONE	P
28-Jan-21	1	1052	1	NW LANTAU	3	67	ON	TMCLKL	824681	805453	WINTER	NONE	P
28-Jan-21	2	1105	4	NW LANTAU	2	85	ON	TMCLKL	825689	805465	WINTER	NONE	P
28-Jan-21	3	1133	6	NW LANTAU	2	62	ON	TMCLKL	827494	805469	WINTER	NONE	S
28-Jan-21	4	1213	2	NW LANTAU	2	74	ON	TMCLKL	827103	807466	WINTER	NONE	P

**Appendix III. Individual dolphins identified during TMCLKL monitoring surveys in (January 2021)**

<b>ID#</b>	<b>DATE</b>	<b>STG#</b>	<b>AREA</b>
CH105	28/01/21	3	NW LANTAU
NL49	25/01/21	2	NW LANTAU
	28/01/21	1	NW LANTAU
NL98	25/01/21	2	NW LANTAU
NL103	25/01/21	2	NW LANTAU
NL202	28/01/21	4	NW LANTAU
NL242	25/01/21	2	NW LANTAU
NL280	28/01/21	2	NW LANTAU
NL299	25/01/21	2	NW LANTAU
NL321	25/01/21	3	NW LANTAU
NL331	26/01/21	1	NW LANTAU
WL05	25/01/21	2	NW LANTAU
WL179	25/01/21	1	NW LANTAU
WL227	28/01/21	3	NW LANTAU



Appendix IV. Photograph of Identified Individual Dolphin in January 2021 (TMCLKL)



Appendix IV. (cont'd)