

Appendix E

Operational Phase Dolphin Monitoring Survey

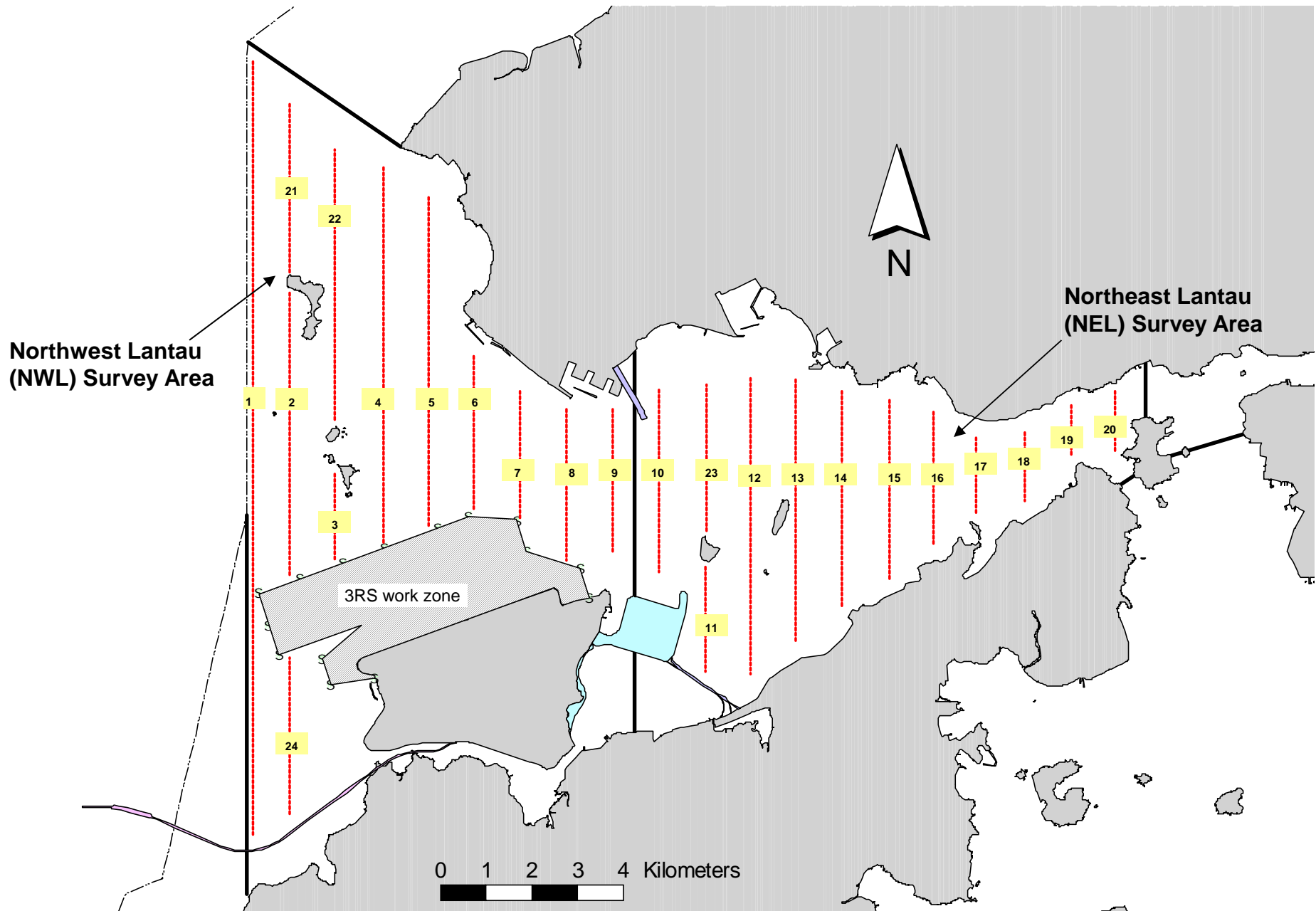


Figure 1. Transect Line Layout in Northwest and Northeast Lantau Survey Areas

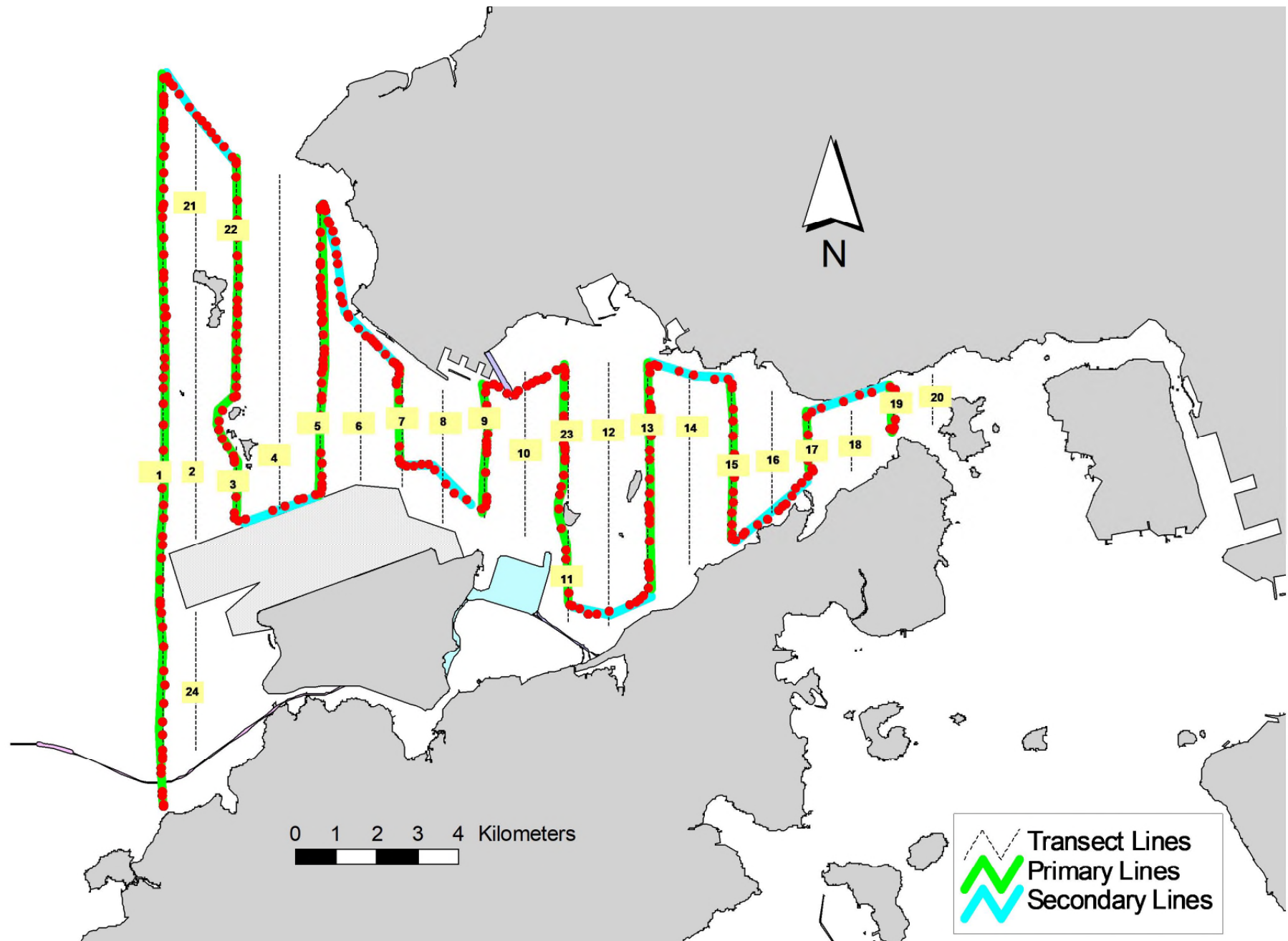


Figure 2. Survey Route on June 17th, 2021

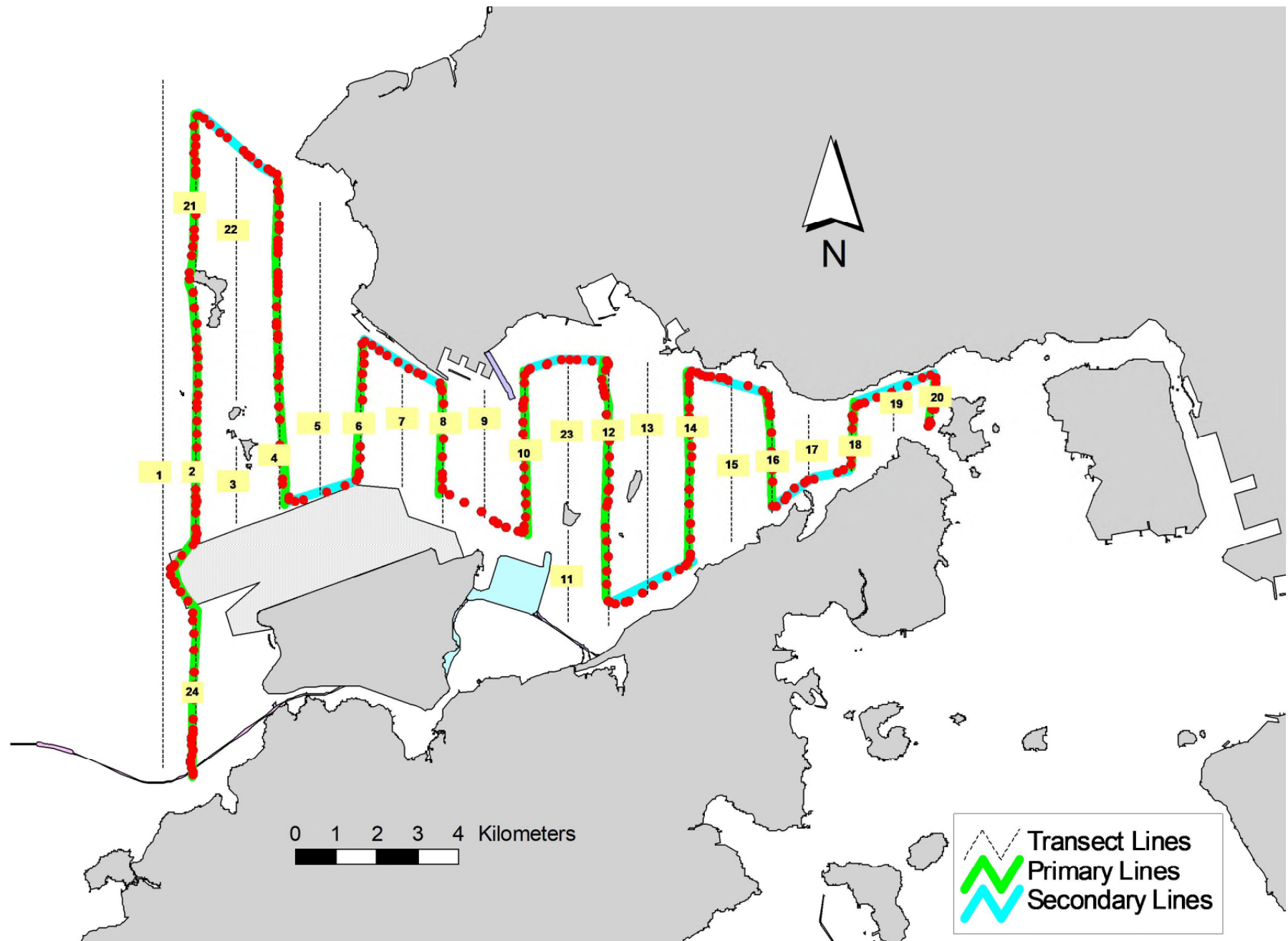


Figure 3. Survey Route on June 24th, 2021

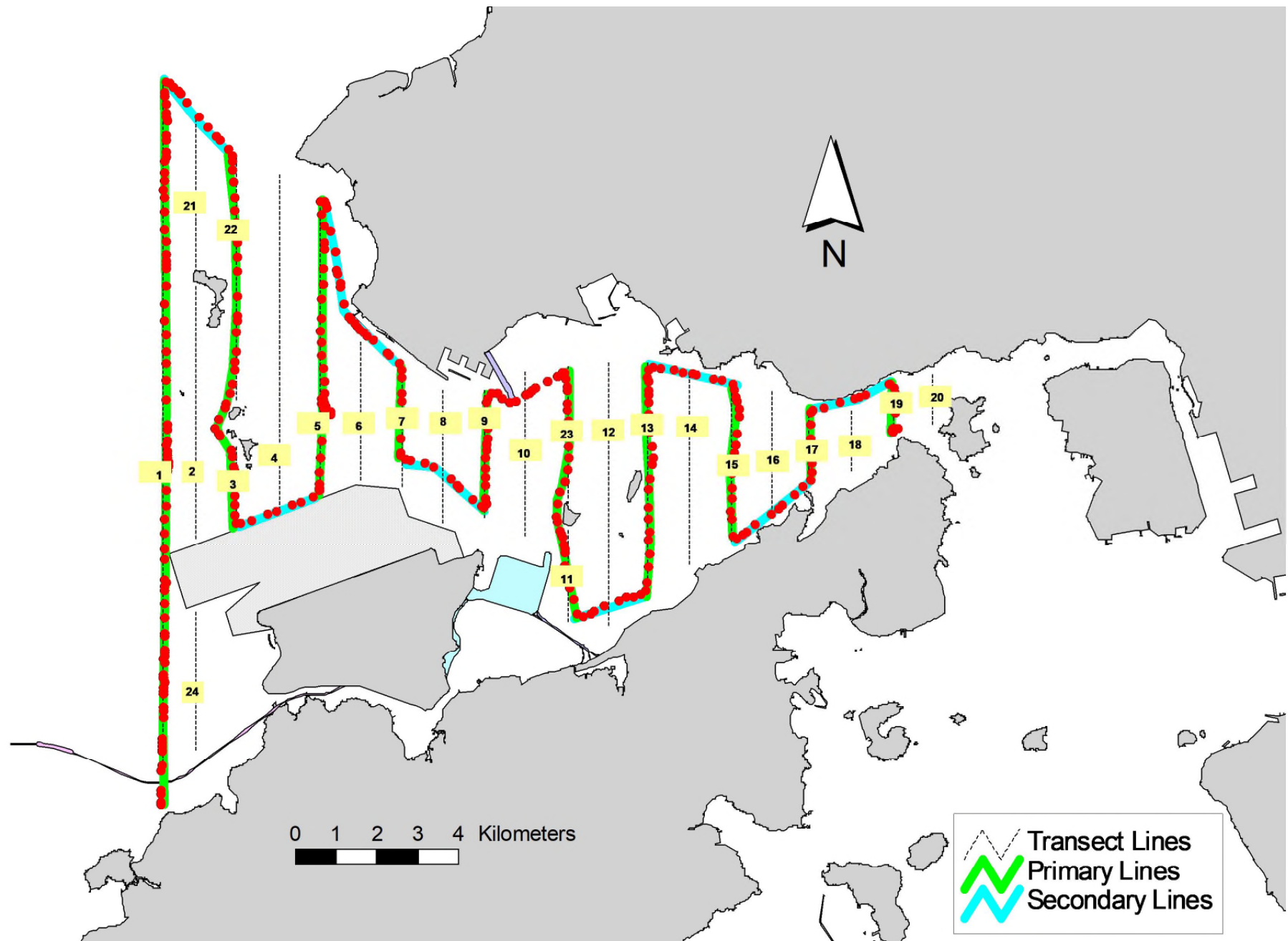


Figure 4. Survey Route on June 28th, 2021

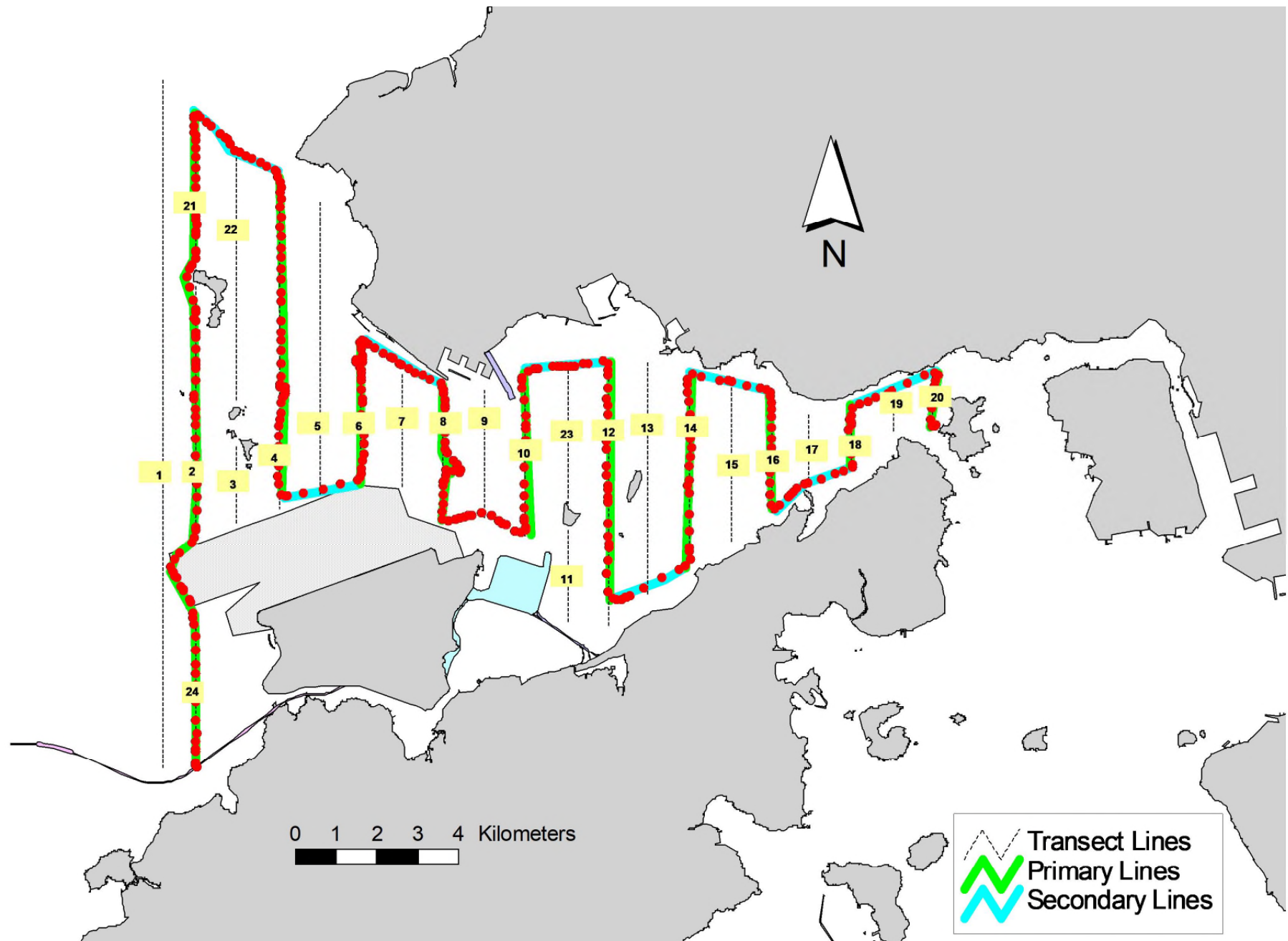


Figure 5. Survey Route on June 29th, 2021

Appendix I. TMCLKL Survey Effort Database (June 2021)

(Abbreviations: BEAU = Beaufort Sea State; P = Primary Line Effort; S = Secondary Line Effort)

DATE	AREA	BEAU	EFFORT	SEASON	VESSEL	TYPE	P/S
17-Jun-21	NW LANTAU	2	10.99	SUMMER	STANDARD138716	TMCLKL	P
17-Jun-21	NW LANTAU	3	24.81	SUMMER	STANDARD138716	TMCLKL	P
17-Jun-21	NW LANTAU	3	13.60	SUMMER	STANDARD138716	TMCLKL	S
17-Jun-21	NE LANTAU	2	10.21	SUMMER	STANDARD138716	TMCLKL	P
17-Jun-21	NE LANTAU	3	4.40	SUMMER	STANDARD138716	TMCLKL	P
24-Jun-21	NW LANTAU	1	4.00	SUMMER	STANDARD138716	TMCLKL	P
24-Jun-21	NW LANTAU	2	22.55	SUMMER	STANDARD138716	TMCLKL	P
24-Jun-21	NW LANTAU	1	0.70	SUMMER	STANDARD138716	TMCLKL	S
24-Jun-21	NW LANTAU	2	8.35	SUMMER	STANDARD138716	TMCLKL	S
24-Jun-21	NE LANTAU	1	6.20	SUMMER	STANDARD138716	TMCLKL	P
24-Jun-21	NE LANTAU	2	10.36	SUMMER	STANDARD138716	TMCLKL	P
24-Jun-21	NE LANTAU	3	2.70	SUMMER	STANDARD138716	TMCLKL	P
24-Jun-21	NE LANTAU	1	4.20	SUMMER	STANDARD138716	TMCLKL	S
24-Jun-21	NE LANTAU	2	6.24	SUMMER	STANDARD138716	TMCLKL	S
28-Jun-21	NW LANTAU	2	30.81	SUMMER	STANDARD138716	TMCLKL	P
28-Jun-21	NW LANTAU	3	4.10	SUMMER	STANDARD138716	TMCLKL	P
28-Jun-21	NW LANTAU	2	14.19	SUMMER	STANDARD138716	TMCLKL	S
28-Jun-21	NE LANTAU	2	11.99	SUMMER	STANDARD138716	TMCLKL	P
28-Jun-21	NE LANTAU	3	3.60	SUMMER	STANDARD138716	TMCLKL	P
28-Jun-21	NE LANTAU	2	8.91	SUMMER	STANDARD138716	TMCLKL	S
28-Jun-21	NE LANTAU	3	1.30	SUMMER	STANDARD138716	TMCLKL	S
29-Jun-21	NW LANTAU	2	1.77	SUMMER	STANDARD36826	TMCLKL	P
29-Jun-21	NW LANTAU	3	21.57	SUMMER	STANDARD36826	TMCLKL	P
29-Jun-21	NW LANTAU	4	2.32	SUMMER	STANDARD36826	TMCLKL	P
29-Jun-21	NW LANTAU	3	9.09	SUMMER	STANDARD36826	TMCLKL	S
29-Jun-21	NW LANTAU	4	1.30	SUMMER	STANDARD36826	TMCLKL	S
29-Jun-21	NE LANTAU	2	17.57	SUMMER	STANDARD36826	TMCLKL	P
29-Jun-21	NE LANTAU	3	1.85	SUMMER	STANDARD36826	TMCLKL	P
29-Jun-21	NE LANTAU	2	10.58	SUMMER	STANDARD36826	TMCLKL	S