

Appendix E

Operational Phase Dolphin Monitoring Survey

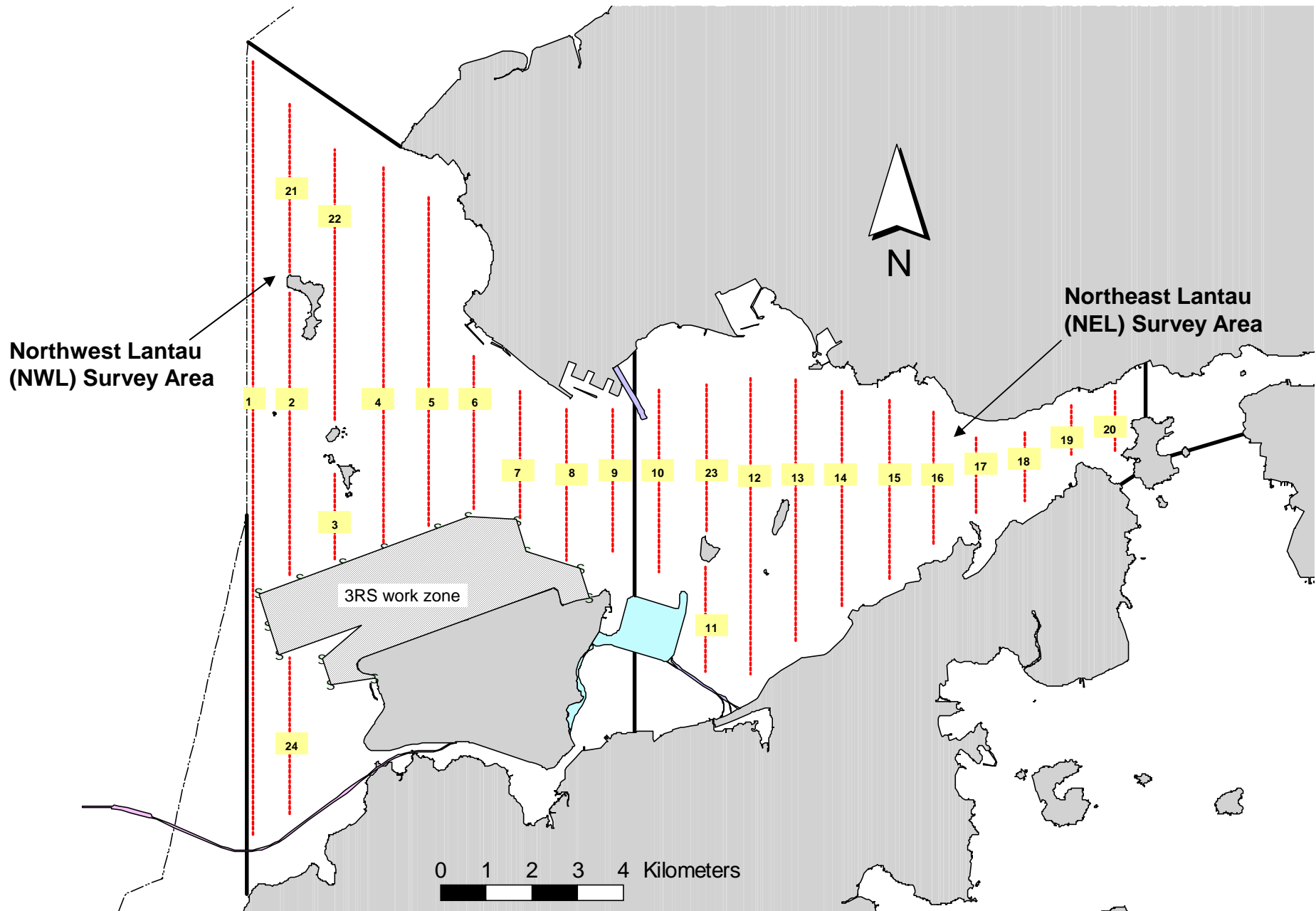


Figure 1. Transect Line Layout in Northwest and Northeast Lantau Survey Areas

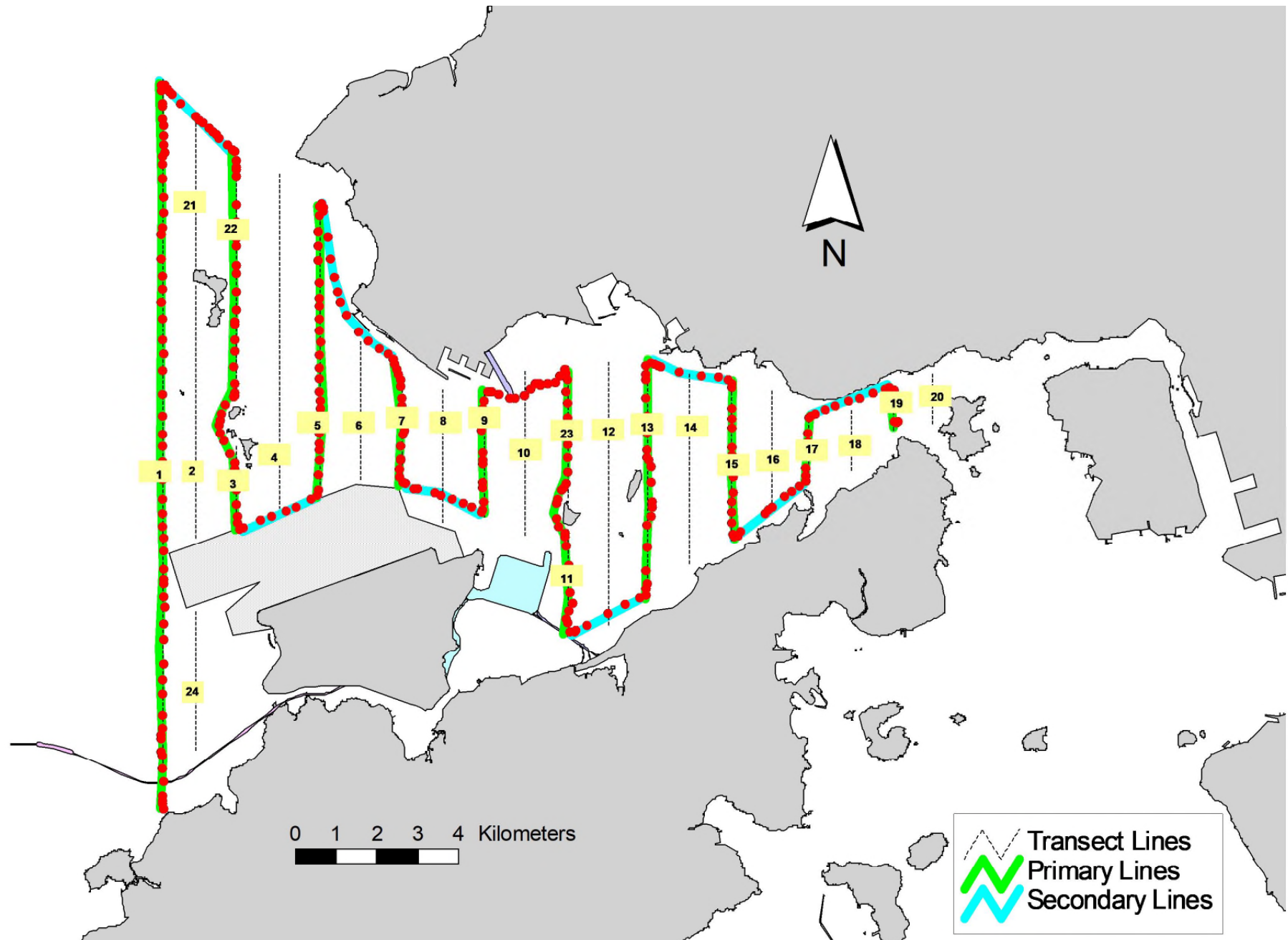


Figure 2. Survey Route on August 3rd, 2021

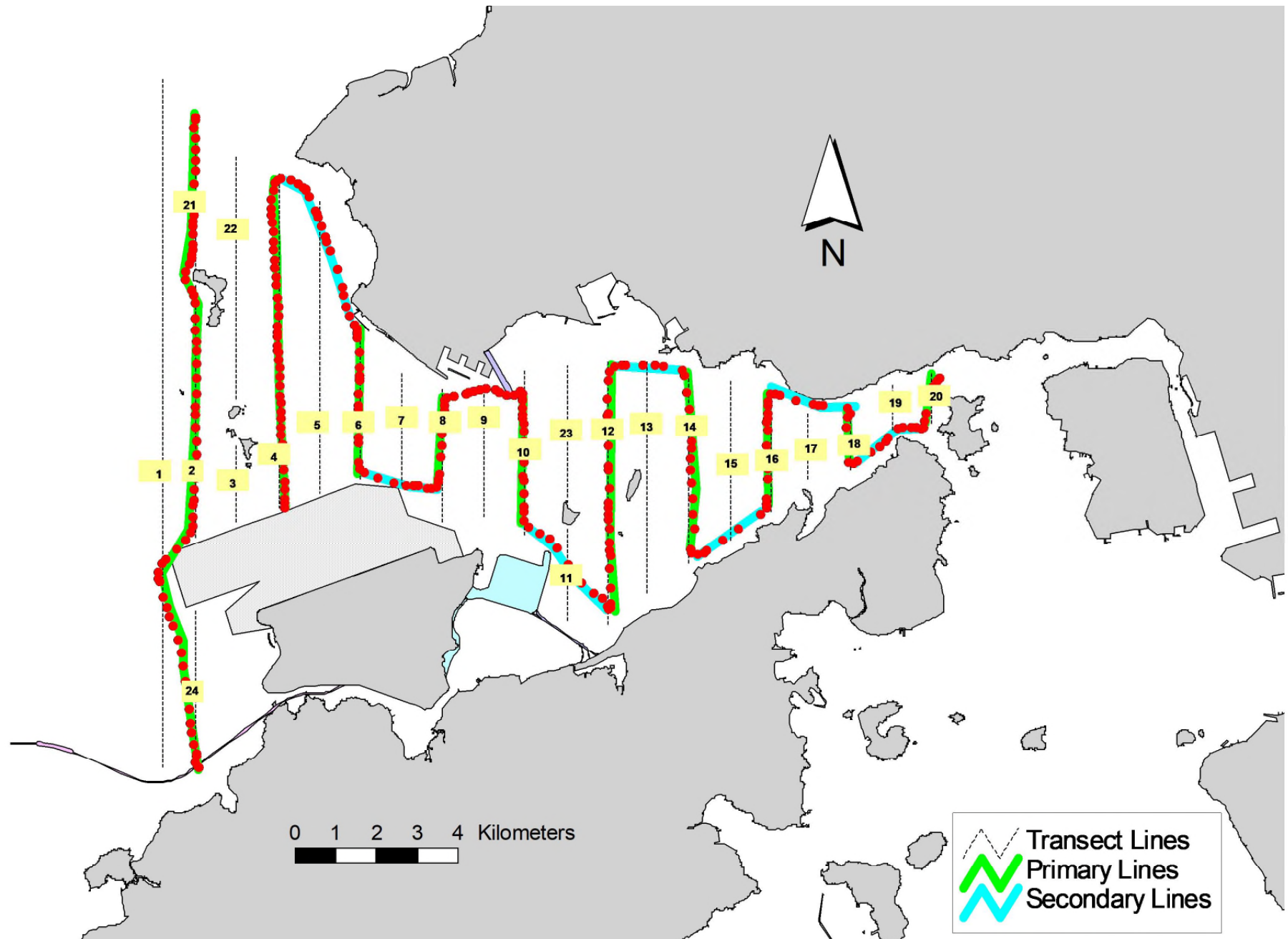


Figure 3. Survey Route on August 5th, 2021

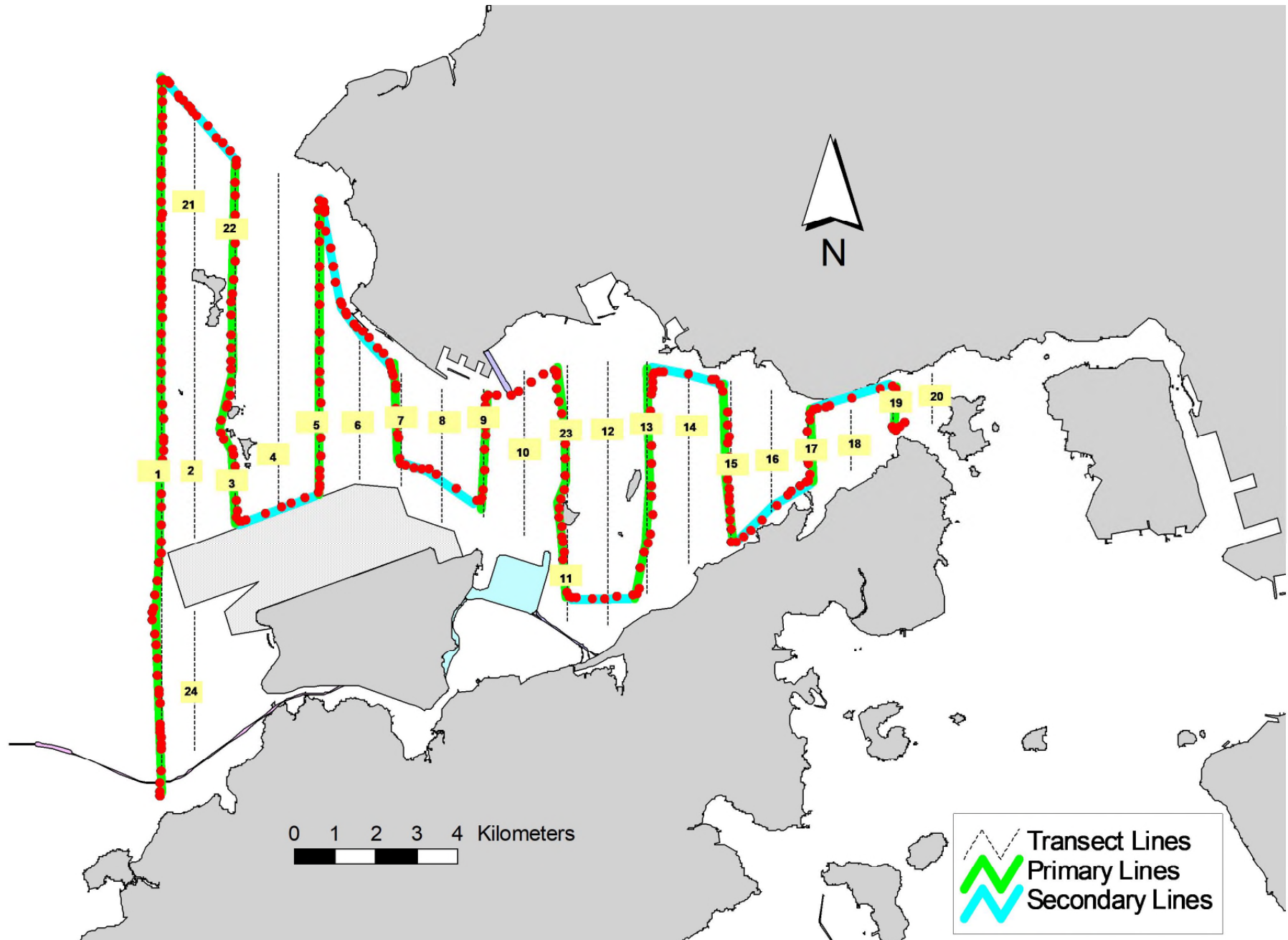


Figure 5. Survey Route on August 9th, 2021

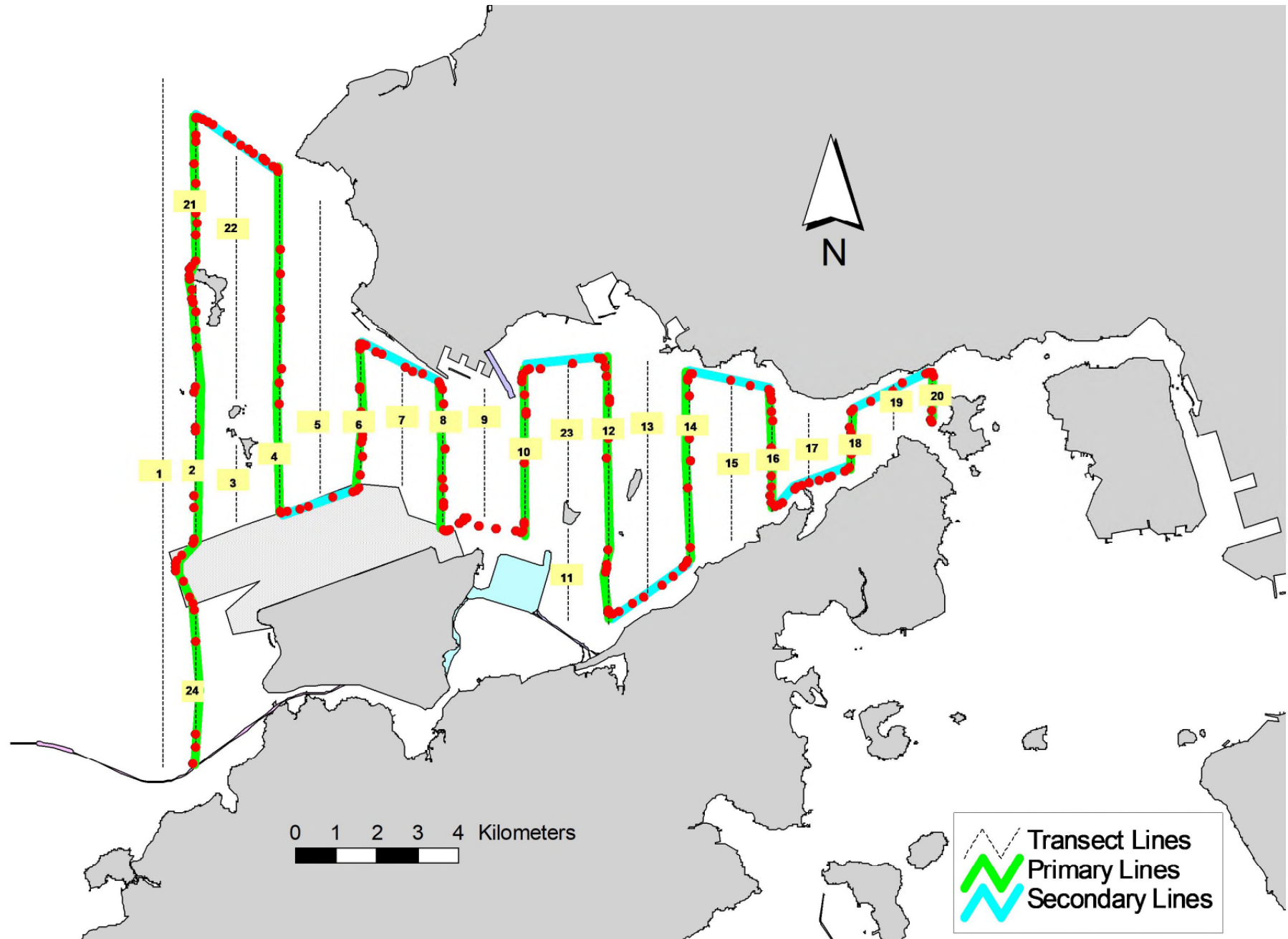


Figure 4. Survey Route on August 24th, 2021

Appendix I. TMCLKL Survey Effort Database (August 2021)

(Abbreviations: BEAU = Beaufort Sea State; P = Primary Line Effort; S = Secondary Line Effort)

DATE	AREA	BEAU	EFFORT	SEASON	VESSEL	TYPE	P/S
3-Aug-21	NW LANTAU	1	1.10	SUMMER	STANDARD36826	TMCLKL	P
3-Aug-21	NW LANTAU	2	13.28	SUMMER	STANDARD36826	TMCLKL	P
3-Aug-21	NW LANTAU	3	23.12	SUMMER	STANDARD36826	TMCLKL	P
3-Aug-21	NW LANTAU	2	9.30	SUMMER	STANDARD36826	TMCLKL	S
3-Aug-21	NW LANTAU	3	2.60	SUMMER	STANDARD36826	TMCLKL	S
3-Aug-21	NE LANTAU	1	1.20	SUMMER	STANDARD36826	TMCLKL	P
3-Aug-21	NE LANTAU	2	13.39	SUMMER	STANDARD36826	TMCLKL	P
3-Aug-21	NE LANTAU	3	2.60	SUMMER	STANDARD36826	TMCLKL	P
3-Aug-21	NE LANTAU	1	1.40	SUMMER	STANDARD36826	TMCLKL	S
3-Aug-21	NE LANTAU	2	7.31	SUMMER	STANDARD36826	TMCLKL	S
5-Aug-21	NW LANTAU	2	2.90	SUMMER	STANDARD138716	TMCLKL	P
5-Aug-21	NW LANTAU	3	27.11	SUMMER	STANDARD138716	TMCLKL	P
5-Aug-21	NW LANTAU	2	1.20	SUMMER	STANDARD138716	TMCLKL	S
5-Aug-21	NW LANTAU	3	4.09	SUMMER	STANDARD138716	TMCLKL	S
5-Aug-21	NE LANTAU	2	7.89	SUMMER	STANDARD138716	TMCLKL	P
5-Aug-21	NE LANTAU	3	10.89	SUMMER	STANDARD138716	TMCLKL	P
5-Aug-21	NE LANTAU	2	2.10	SUMMER	STANDARD138716	TMCLKL	S
5-Aug-21	NE LANTAU	3	8.42	SUMMER	STANDARD138716	TMCLKL	S
9-Aug-21	NW LANTAU	2	16.60	SUMMER	STANDARD138716	TMCLKL	P
9-Aug-21	NW LANTAU	3	18.90	SUMMER	STANDARD138716	TMCLKL	P
9-Aug-21	NW LANTAU	1	2.20	SUMMER	STANDARD138716	TMCLKL	S
9-Aug-21	NW LANTAU	2	6.30	SUMMER	STANDARD138716	TMCLKL	S
9-Aug-21	NW LANTAU	3	3.90	SUMMER	STANDARD138716	TMCLKL	S
9-Aug-21	NE LANTAU	2	17.30	SUMMER	STANDARD138716	TMCLKL	P
9-Aug-21	NE LANTAU	2	6.30	SUMMER	STANDARD138716	TMCLKL	S
9-Aug-21	NE LANTAU	3	1.30	SUMMER	STANDARD138716	TMCLKL	S
24-Aug-21	NW LANTAU	2	28.93	SUMMER	STANDARD36826	TMCLKL	P
24-Aug-21	NW LANTAU	2	7.97	SUMMER	STANDARD36826	TMCLKL	S
24-Aug-21	NE LANTAU	1	5.95	SUMMER	STANDARD36826	TMCLKL	P
24-Aug-21	NE LANTAU	2	10.48	SUMMER	STANDARD36826	TMCLKL	P
24-Aug-21	NE LANTAU	3	2.70	SUMMER	STANDARD36826	TMCLKL	P
24-Aug-21	NE LANTAU	1	3.27	SUMMER	STANDARD36826	TMCLKL	S
24-Aug-21	NE LANTAU	2	7.10	SUMMER	STANDARD36826	TMCLKL	S
24-Aug-21	NE LANTAU	3	0.30	SUMMER	STANDARD36826	TMCLKL	S