

Activity ID	Activity Name	Original Duration	Start	Finish	2013			
					Nov		Dec	
					4	5	6	7
<b>TMCLK - Northern Connection Sub-Sea Tunnel Section</b>								
<b>Preliminaries</b>								
<b>Contract Dates</b>								
<b>Commencement and Completion Dates</b>								
KD001	Letter of Acceptance Received	0d		26-Jul-13A				
KD005	Date for Commencement	0d	05-Aug-13A					
<b>Site Possession Date</b>								
AD010	Portions: X, N5, N7,(N8A,B&C), N9,(N12-seabed level & below) & WA23	0d	05-Aug-13A					
AD020	Portions: WA18 - Zone 18A(SO Office), Zone 18B & 18C	0d	05-Aug-13A					
AD030	Portions: N6A & N6B	0d	28-Dec-13*				◆ Portions: N6A & N6B	
<b>General Submissions</b>								
<b>Programme</b>								
SCC0273	SO Aprove Initial Works Programme - SCC27.2	30d	11-Oct-13 A	31-Oct-13A	SO Aprove Initial Works Programme - SCC27.2			
SCC0274	Prepare & Submit More detailed Initial Works Programme - SCC27.2	60d	01-Nov-13A	30-Dec-13		Prepare & Submit More detailed Initial Works Programme - SCC27.2		
SCC0275	SO Comment More Detailed Initial Works Programme - SCC27.2	30d	31-Dec-13	29-Jan-14			SO Comment More Detailed Ini	
SCC0276	Resubmit Detailed Works Programme - SCC27.2	21d	30-Jan-14	19-Feb-14				Res
SCC0277	Detailed Works Programme - SCC27.2 - Approval by SO	30d	20-Feb-14	21-Mar-14				
SCC0278	Prepare & Submit 1st 3 Months Rolling Programme - SCC27.2	14d	27-Jul-13A	09-Aug-13A				
SCC0288	Prepare & Submit 1st Monthly Progress Report	0d		13-Sep-13A				
<b>Risk Management</b>								
A65030	Prepare & Submit Risk Management Plan ER13.7.1	0d		01-Nov-13A	◆ Prepare & Submit Risk Management Plan ER13.7.1			
<b>Public Relations</b>								
A64950	Prepare & Submit Public Relation Plan (Quarterly)	56d	26-Jul-13A	18-Oct-13A	◆ Prepare & Submit Public Relation Plan (Quarterly)			
<b>Safety</b>								
SCC035	Prepare & Submit Draft Safety Plan - SCC35.2	14d	27-Jul-13A	09-Aug-13A				
SCC0351	Arrange Adhoc Safety Meeting - SCC35.3	7d	10-Aug-13A	16-Aug-13A				
SCC0352	Prepare & Submit Safety Plan - SCC35.4	35d	27-Jul-13A	01-Nov-13A	◆ Prepare & Submit Safety Plan - SCC35.4			
SCC0353	Safety Plan - SO Review & Comment - SCC35.4	28d	02-Nov-13A	08-Nov-13A	◆ Safety Plan - SO Review & Comment - SCC35.4			
<b>Quality</b>								
A65000	Prepare for Project Management Plan	28d	27-Jul-13A	23-Aug-13A				
A65010	Submit to SO - Project Management Plan	0d	24-Aug-13A					
<b>Contractor Organization</b>								
SCC82	Prepare & Submit Details of Contractor's Management Team - SCC82	14d	05-Aug-13A	18-Aug-13A				
<b>Subcontractor Management</b>								
SCC046	Prepare & Submit Sub-contractor Management Plan (SMP) - SCC46	30d	27-Jul-13A	04-Sep-13A	◆ C46			
<b>Environmental</b>								
<b>Submission Required under SCC</b>								
SCC072	Prepare & Submit draft Environmental Management Plan (EMP) - SCC72	21d	27-Jul-13A	16-Aug-13A				
SCC0721	SO Review & Comment - Draft Environmental Management Plan (EMP) - SCC72	15d	17-Aug-13A	30-Sep-13A	◆ Draft Environmental Management Plan (EMP) - SCC72			
SCC0722	Finalize & Resubmit - Environmental Management Plan (EMP) - SCC72	7d	01-Oct-13A	31-Oct-13A	◆ Finalize & Resubmit - Environmental Management Plan (EMP) - SCC72			
<b>Environmental Permit Submissions</b>								
<b>Notify DEP Commencement Date of Constuction - EP1.11</b>								
EP0020	EPD Submission by SO/ENPO	7d	04-Sep-13A	31-Oct-13A	◆ EPD Submission by SO/ENPO			
EP1010	Notify DEP Commencement Date of Construction	0d		31-Oct-13A	◆ Notify DEP Commencement Date of Construction			
<b>Establish ET - EP2.1</b>								
EP1110	Establish Environmental Team (ET)	0d		05-Aug-13A				
<b>Management Organization of the MC - EP2.3</b>								
EP1220	EPD Submission by SO/ENPO	14d	06-Sep-13A	31-Oct-13A	◆ EPD Submission by SO/ENPO			
EP1310	Management Organization of the Main Construction Companies	0d		31-Oct-13A	◆ Management Organization of the Main Construction Companies			
<b>Enhanced Monitoring Plan on TSP Level at TM - EP2.4</b>								
EP1359	IEC Review and submission to SO/ENPO	3d	25-Sep-13A	28-Oct-13A	◆ IEC Review and submission to SO/ENPO			
EP1360	Review & Approval by SO/EN PO	14d	29-Oct-13A	30-Oct-13A	◆ Review & Approval by SO/EN PO			
EP1410	Enhanced Monitoring Plan on TSP Level at TM	0d		30-Oct-13A	◆ Enhanced Monitoring Plan on TSP Level at TM			
<b>Acoustic Decoupling Measures Applied for Bored Piling, Dredging &amp; Reclamation - EP2.5</b>								
EP1460	Prepare Submission by JV	6d	30-Aug-13A	21-Sep-13A				
EP1470	Review & Approval by SO/EN PO	14d	22-Sep-13A	30-Sep-13A	◆ Review & Approval by SO/EN PO			
EP1510	Acoustic Decoupling Measures Applied for Bored Piling, Dredging & Reclamation	0d		30-Sep-13A	◆ Acoustic Decoupling Measures Applied for Bored Piling, Dredging & Reclamation			
<b>Detailed Coral Translocation Methodology - EP2.6</b>								
EP1630	Review by JV and Submission to IEC	12d	23-Aug-13A	29-Aug-13A				
EP1632	Comment by IEC	7d	30-Aug-13A	30-Aug-13A				
EP1634	Resubmit by JV/ET	6d	31-Aug-13A	26-Sep-13A				
EP1636	Review & Approval by SO/EN PO	7d	27-Sep-13A	27-Sep-13A				
EP1640	Coral Translocation Methodology	0d		27-Sep-13A				
<b>Spill Response Plan - EP2.7</b>								
EP1722	Comment by IEC	6d	03-Sep-13A	04-Sep-13A				
EP1724	Prepare and Resubmit by ET/JV	6d	05-Sep-13A	24-Sep-13A				
EP1730	Review and Approval by SO/ENPO	12d	25-Sep-13A	27-Sep-13A				
EP1740	Spill Response Plan	0d		27-Sep-13A				
<b>Regular Marine Travel Routes of Vessels - EP2.8</b>								
EP1830	Prepare for Submission by Marine Traffic Consultant	12d	05-Aug-13A	17-Aug-13A				
EP1832	Comment by IEC	7d	18-Aug-13A	30-Aug-13A				
EP1834	Prepare and Resubmit by ET/JV	6d	31-Aug-13A	08-Oct-13A	◆ Submit by ET/JV			
EP1840	Review by JV and Submission to SO/ENPO	12d	09-Oct-13A	16-Oct-13A	◆ Review by JV and Submission to SO/ENPO			
EP1850	Regular Marine Travel Routes of Vessels	0d		16-Oct-13A	◆ Regular Marine Travel Routes of Vessels			
<b>Landscape and Visual Plan - EP2.9</b>								
EP1860	Prepare and Submission by ET/JV	24d	05-Aug-13A	27-Oct-13A	◆ Prepare and Submission by ET/JV			
EP1870	Review by SO/ENPO	14d	28-Oct-13A	29-Oct-13A	◆ Review by SO/ENPO			
EP1880	Landscape and Visual Plan	0d		29-Oct-13A	◆ Landscape and Visual Plan			
<b>Waste Management Plan - EP2.10</b>								
EP2020	Prepare and Submission by JV/ET	24d	05-Aug-13A	29-Aug-13A				
EP2022	Comment from IEC	7d	30-Aug-13A	30-Aug-13A				

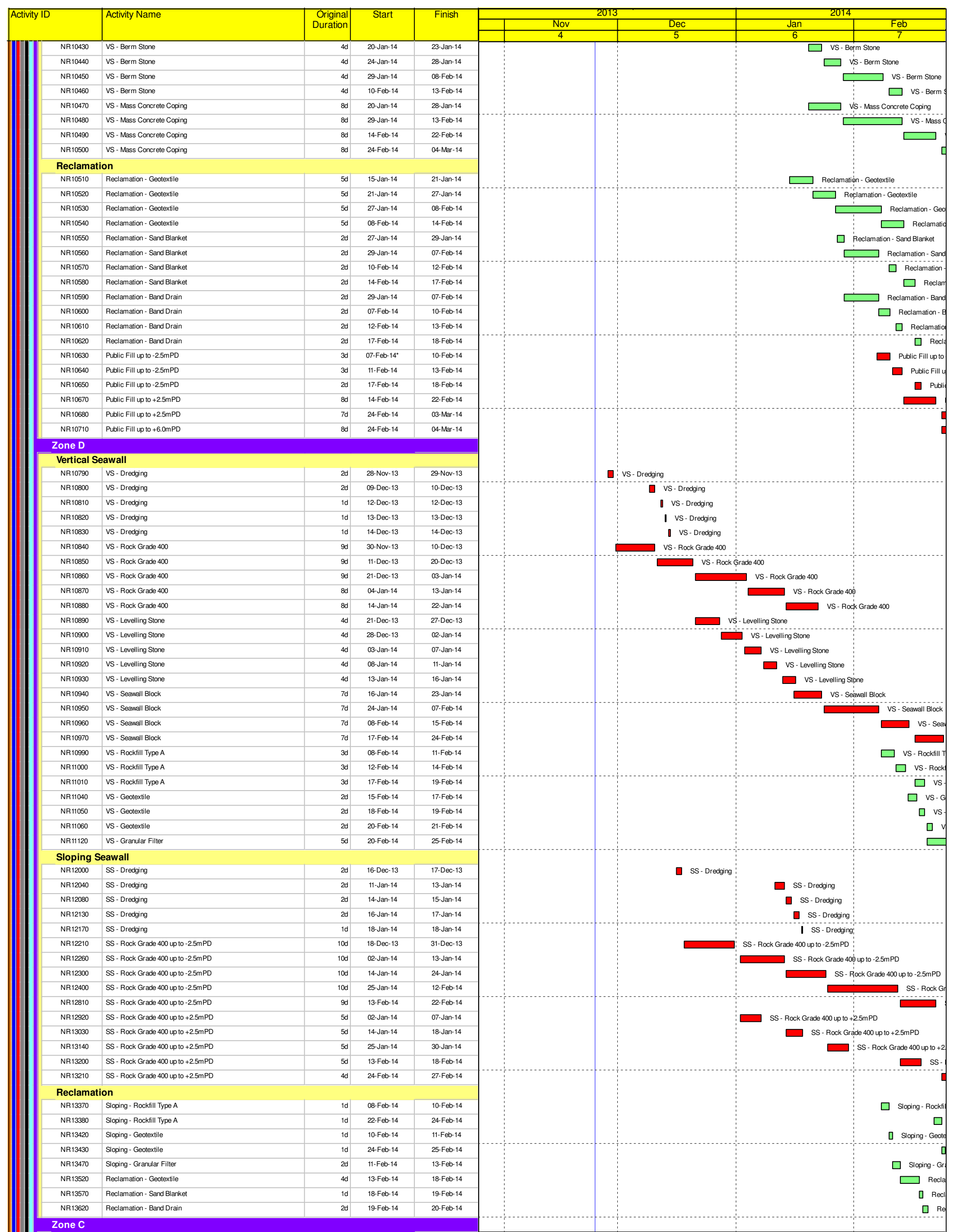
Activity ID	Activity Name	Original Duration	Start	Finish	2013				2014			
					Nov		Dec		Jan		Feb	
					4	5	6	7				
EP2024	Prepare and Resubmit by ET/JV	6d	31-Aug-13A	21-Sep-13A								
EP2030	Review and Approval by SO/ENPO	14d	22-Sep-13A	27-Sep-13A								
EP2040	Waste Management Plan	0d		27-Sep-13A								
<b>Clarification/Notification for Resequenced Nth Reclamation</b>												
A64900	Prepare Resequencing MS and dwgs for ET Study	24d	05-Aug-13A	26-Aug-13A								
A64910	Prepare Notification / Presentation by ET	14d	27-Aug-13A	30-Aug-13A								
A64915	Comment by IEC	7d	31-Aug-13A	04-Sep-13A								
A64917	Prepare and resubmit by ET/JV	6d	05-Sep-13A	25-Sep-13A								
A64920	Review Resequencing Proposal by SO	14d	26-Sep-13A	03-Oct-13A								
A64930	Notification to EPD for Resequencing by SO	0d	03-Oct-13A									
A64940	EPD Acceptance (assume no VEPs required)	14d	04-Oct-13A	31-Oct-13A								
<b>Internet Website</b>												
EP2610	Internet Website	0d		18-Oct-13A								
<b>EM&amp;A Submissions</b>												
<b>Baseline Air Quality Monitoring - EM&amp;A3.5.1.1</b>												
EP1125	Prepare Baseline Air Quality Monitoring Plan by ET	18d	05-Aug-13A	09-Oct-13A								
EP1135	Review and Submission by JV	12d	09-Oct-13A	09-Oct-13A								
EP1145	Review and Approval by SO	14d	10-Oct-13A	17-Oct-13A								
EP1155	Valid Equipment Calibration Certificates	0d	18-Oct-13A									
EP1160	Baseline Air Quality Monitoring	14d	18-Oct-13A	31-Oct-13A								
<b>Site Drainage Management Plan - EM&amp;A5.2.1.2</b>												
EP1420	Site Drainage Management Plan - Submission to SO	0d		11-Oct-13A								
EP1430	Site Drainage Management Plan - Review by SO/ET	10d	12-Oct-13A	31-Oct-13A								
<b>Updated Environmental Management and Audit Plan (EM&amp;A)</b>												
EP2760	Prepare Contract Specific EM&A by ET	12d	05-Aug-13A	25-Oct-13A								
EP2810	Review and Submission by JV	15d	26-Oct-13A	29-Oct-13A								
EP2820	Prepare & Submit - Contract Specific EM&A	0d		28-Oct-13A								
<b>Design Submission Required under ER</b>												
<b>Design Memorandum (A3)</b>												
GS00100	Prepare & Submit Design Memorandum	44d	08-Aug-13A	01-Nov-13A								
GS00110	*1st Submission (1st Draft)	0d		01-Nov-13A								
GS00120	SO's Comments for 1st Submission	35d	02-Nov-13A	19-Nov-13A								
GS00130	Prepare Re-submission	10d	20-Nov-13A	04-Dec-13								
GS00140	*2nd Submission (Final)	0d		04-Dec-13								
GS00150	ICE Cert. Issue	6d	05-Dec-13	11-Dec-13								
GS00160	SO Forward ICE Cert. to GEO	3d	12-Dec-13	14-Dec-13								
GS00170	SO Forward Submission to GEO	3d	05-Dec-13	07-Dec-13								
GS00180	GEO Review (4 weeks)	28d	08-Dec-13	04-Jan-14								
GS00190	GEO Comment Received	0d		04-Jan-14								
GS00195	SO's Condition Approval	35d	05-Dec-13	08-Jan-14								
<b>Workshop for Tunnelling works (B1, B2)</b>												
GS01000	1st Risk Management Workshop for TBM Tunnelling	0d		28-Aug-13A								
GS01010	Value Management Workshop for Tunneling Works	0d		25-Nov-13								
GS01020	2nd Risk Management Workshop for Tunneling Works	0d		08-Jan-14								
<b>Risk Assessment of Submarine Cable-- Tunnelling Works (B6)</b>												
GS01300	Propose Independent Submarine Cable Expert	6d	24-Jan-14	07-Feb-14								
GS01305	SO's Approval	14d	03-Feb-14	17-Feb-14								
GS01310	Appoint Independent Submarine Cable Expert	6d	17-Feb-14	24-Feb-14								
GS01400	Preparation of Risk Assessment of Submarine cables - Tunnelling Works	24d	24-Feb-14	22-Mar-14								
<b>Durability Assessment Report (A9)</b>												
GS01500	Preparation of Durability Assessment Report	36d	18-Sep-13A	29-Nov-13								
GS01505	1st Submission (1st Draft)	0d		29-Nov-13								
GS01510	SO's Comments for 1st Submission	35d	30-Nov-13	03-Jan-14								
GS01515	Prepare Re-submission	10d	04-Jan-14	15-Jan-14								
GS01520	2nd Submission (Final)	0d		15-Jan-14								
GS01525	ICE Cert. Issue	6d	16-Jan-14	22-Jan-14								
GS01550	SO's Condition Approval	35d	16-Jan-14	19-Feb-14								
<b>ACABAS Submissions (A10)</b>												
GS01600	Preparation of ACABAS submissions	30d	16-Oct-13A	07-Dec-13								
GS01610	*1st Submission (1st Draft)	0d		07-Dec-13								
GS01620	ACABAS Comment	14d	08-Dec-13	21-Dec-13								
GS01630	Prepare Re-submission	12d	23-Dec-13	08-Jan-14								
GS01640	*Re-submission	0d		08-Jan-14								
GS01650	ACABAS Approval	14d	09-Jan-14	22-Jan-14								
<b>Submissions to Design Advisory Panel of ArchSD (A11)</b>												
GS01700	Preparation of Submissions to Design Advisory Panel of ArchSD	30d	25-Nov-13	31-Dec-13								
GS01710	1st Submission	0d		31-Dec-13								
GS01720	ArchSD's comment	30d	01-Jan-14	30-Jan-14								
GS01730	Prepare Re-submission	18d	07-Feb-14	27-Feb-14								
<b>Works Area</b>												
<b>Northern Landfall</b>												
<b>Submission under ER</b>												
<b>Additional Ground Investigation Plan - CPT</b>												
GS00600	Preparation of Additional Ground Investigation - CPT	11d	08-Aug-13A	24-Aug-13A								
GS00610	1st Submission	0d		24-Aug-13A								
GS00650	SO's Comments for 1st Submission	35d	25-Aug-13A	16-Sep-13A								
GS00660	SO's Condition Approval	0d		16-Sep-13A								
<b>Additional Ground Investigation Plan - Nth Landfall &amp; Tunnel</b>												
GS00620	Preparation of Additional Ground Investigation - Nth Landfall & Tunnel	11d	18-Sep-13A	24-Oct-13A								
GS00690	1st Submission	0d		24-Oct-13A								
GS01282	SO's Comments for 1st Submission	35d	25-Oct-13A	01-Dec-13								

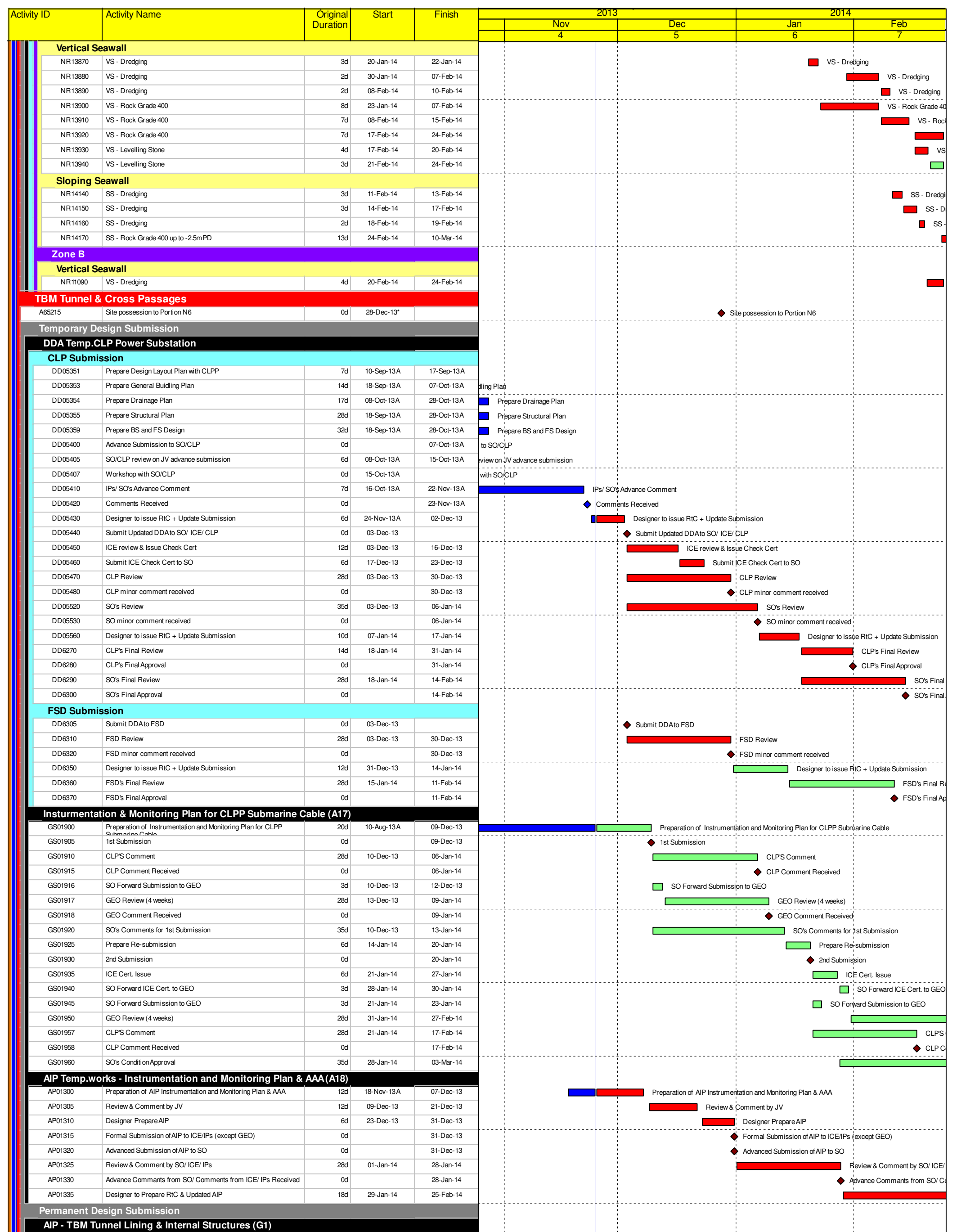
Activity ID	Activity Name	Original Duration	Start	Finish	2013				2014					
					Nov		Dec		Jan		Feb			
					4	5	6	7						
GS01284	SO's Condition Approval	0d		01-Dec-13										
<b>SO's Site Accommodation</b>														
GS02490	Preparation of Submission for SO's Site Accommodation	36d	31-Aug-13A	04-Oct-13A										
GS02500	1st Submission	0d		04-Oct-13A										
GS02510	SO's Comments for 1st Submission	35d	05-Oct-13A	24-Oct-13A										
GS02520	Prepare Re-submission	12d	25-Oct-13A	25-Oct-13A										
GS02540	2nd Submission	0d		25-Oct-13A										
GS02550	SO's Condition Approval	35d	26-Oct-13A	05-Nov-13A										
<b>Construcion TIA Report (incl.TTMS) (A8)</b>														
<b>TIA Report</b>														
GS001050	Preparation of Construction Traffic Impact Assessment Report	48d	07-Feb-14	03-Apr-14										
<b>Utilities Report (A7)</b>														
GS00800	Preparation of Utilities Report	24d	05-Aug-13A	29-Nov-13										
<b>Temp. Pontoon (A16)</b>														
GS01800	Preparation of Temporary pontoon	18d	27-Jul-13A	05-Sep-13A										
GS01810	1st Submission	0d		05-Sep-13A										
GS01820	MD's approval	28d	06-Sep-13A	26-Sep-13A										
<b>Temporary Design Submission</b>														
<b>Temporay Seawall for Ph.2 Reclamation</b>														
GS02555	Designer Prepare - Temporary Seawall for Ph2 Reclamation	7d	05-Aug-13A	04-Oct-13A										
GS02560	JV Review - Temporary Seawall for Ph2 Reclamation	6d	05-Oct-13A	08-Oct-13A										
GS02570	1st Submission	0d		08-Oct-13A										
GS02580	SO's Comments for 1st Submission	35d	09-Oct-13A	11-Dec-13										
GS02590	Prepare Re-submission	10d	12-Dec-13	23-Dec-13										
GS02592	2nd Submission	0d		23-Dec-13										
GS02600	ICE Cert. Issue	6d	24-Dec-13	02-Jan-14										
GS02602	IPs Comment	28d	24-Dec-13	20-Jan-14										
GS02604	MD/IPs Comment Received	0d		20-Jan-14										
GS02610	SO's Condition Approval	35d	24-Dec-13	27-Jan-14										
<b>AIP Temp.works - North Ventilation Shaft ELS</b>														
AP01100	Preparation of AIP Nth Landfall Ventilation Shaft ELS	9d	05-Aug-13A	29-Nov-13										
AP01105	Review & Comment by JV	5d	30-Nov-13	05-Dec-13										
AP01110	Designer Prepare AIP	5d	06-Dec-13	11-Dec-13										
AP01115	Formal Submission of AIP to ICE/IPs (except GEO)	0d		11-Dec-13										
AP01120	Advanced Submission of AIP to SO	0d		11-Dec-13										
AP01125	Review & Comment by SO/ ICE/ IPs	28d	12-Dec-13	08-Jan-14										
AP01130	Advance Commants from SO/ Comments from ICE/ IPs Received	0d		08-Jan-14										
AP01135	Designer to Prepare Rtc & Updated AIP	18d	09-Jan-14	29-Jan-14										
AP01140	Submission of AIP to SO/ ICE together with Reply To Comment (RTC)	0d		29-Jan-14										
AP01145	Reply to IPs Comments in RTC	0d		29-Jan-14										
AP01150	ICE Approval & Issue of Design Check Cert.	18d	30-Jan-14	26-Feb-14										
AP01165	SO forward AIP to GEO	3d	30-Jan-14	01-Feb-14										
AP01170	GEO Review (4 weeks)	28d	07-Feb-14	06-Mar-14										
AP01180	SO Review (35 Days)	35d	05-Feb-14	11-Mar-14										
<b>AIP Temp.works - North TBM Launching Shaft ELS</b>														
AP01200	Preparation of AIP Nth TBM Launching Shaft	12d	12-Oct-13A	29-Nov-13										
AP01205	Review & Comment by JV	12d	30-Nov-13	13-Dec-13										
AP01210	Designer Prepare AIP	6d	14-Dec-13	20-Dec-13										
AP01215	Formal Submission of AIP to ICE/IPs (except GEO)	0d		20-Dec-13										
AP01220	Advanced Submission of AIP to SO	0d		20-Dec-13										
AP01225	Review & Comment by SO/ ICE/ IPs	28d	21-Dec-13	17-Jan-14										
AP01230	Advance Commants from SO/ Comments from ICE/ IPs Received	0d		17-Jan-14										
AP01235	Designer to Prepare Rtc & Updated AIP	18d	18-Jan-14	14-Feb-14										
AP01240	Submission of AIP to SO/ ICE together with Reply To Comment (RTC)	0d		14-Feb-14										
AP01245	Reply to IPs Comments in RTC	0d		14-Feb-14										
AP01250	ICE Approval & Issue of Design Check Cert.	18d	15-Feb-14	07-Mar-14										
AP01265	SO forward AIP to GEO	3d	15-Feb-14	17-Feb-14										
AP01270	GEO Review (4 weeks)	28d	18-Feb-14	17-Mar-14										
AP01280	SO Review (35 Days)	35d	15-Feb-14	21-Mar-14										
<b>AIP Temp.works - Temporary access to Portion N8A-C incl. Temp. Lighting (D1)</b>														
AP01500	Preparation of AIP Temporary Access Road to N8	12d	24-Dec-13	09-Jan-14										
AP01505	Review & Comment by JV	12d	10-Jan-14	23-Jan-14										
AP01510	Designer Prepare AIP	6d	24-Jan-14	30-Jan-14										
AP01515	Formal Submission of AIP to ICE/IPs (except GEO)	0d		30-Jan-14										
AP01520	Advanced Submission of AIP to SO	0d		30-Jan-14										
AP01525	Review & Comment by SO/ ICE/ IPs	28d	31-Jan-14	27-Feb-14										
<b>AIP Temp.works - Extension of Existing Culvert adjacent to RTT (D4)</b>														
AP01700	Preparation of AIP Box Culvert Extension ELS	12d	24-Sep-13A	07-Dec-13										
AP01705	Review & Comment by JV	12d	09-Dec-13	21-Dec-13										
AP01710	Designer Prepare AIP	6d	23-Dec-13	31-Dec-13										
AP01715	Formal Submission of AIP to ICE/IPs	0d		31-Dec-13										
AP01720	Submission of AIP to SO	0d		31-Dec-13										
AP01725	Review & Comment by SO/ ICE/ IPs	28d	01-Jan-14	28-Jan-14										
AP01730	Commants from SO/ Comments from ICE/ IPs Received	0d		28-Jan-14										
AP01735	Designer to Prepare Rtc & Updated AIP	18d	29-Jan-14	25-Feb-14										
<b>Permanent Design Submission</b>														
<b>AIP - North &amp; South Ventilation Buildings - GBP (I1)</b>														
AP00500	Designer Prepare Nth/Sth Vent. Bldg - GBP	36d	08-Aug-13A	28-Dec-13										
AP00505	Review & Comment by JV	18d	30-Dec-13	20-Jan-14										
AP00510	Designer prepare AIP	12d	21-Jan-14	10-Feb-14										
AP00515	Formal Submission of AIP to ICE/IPs	0d		10-Feb-14										



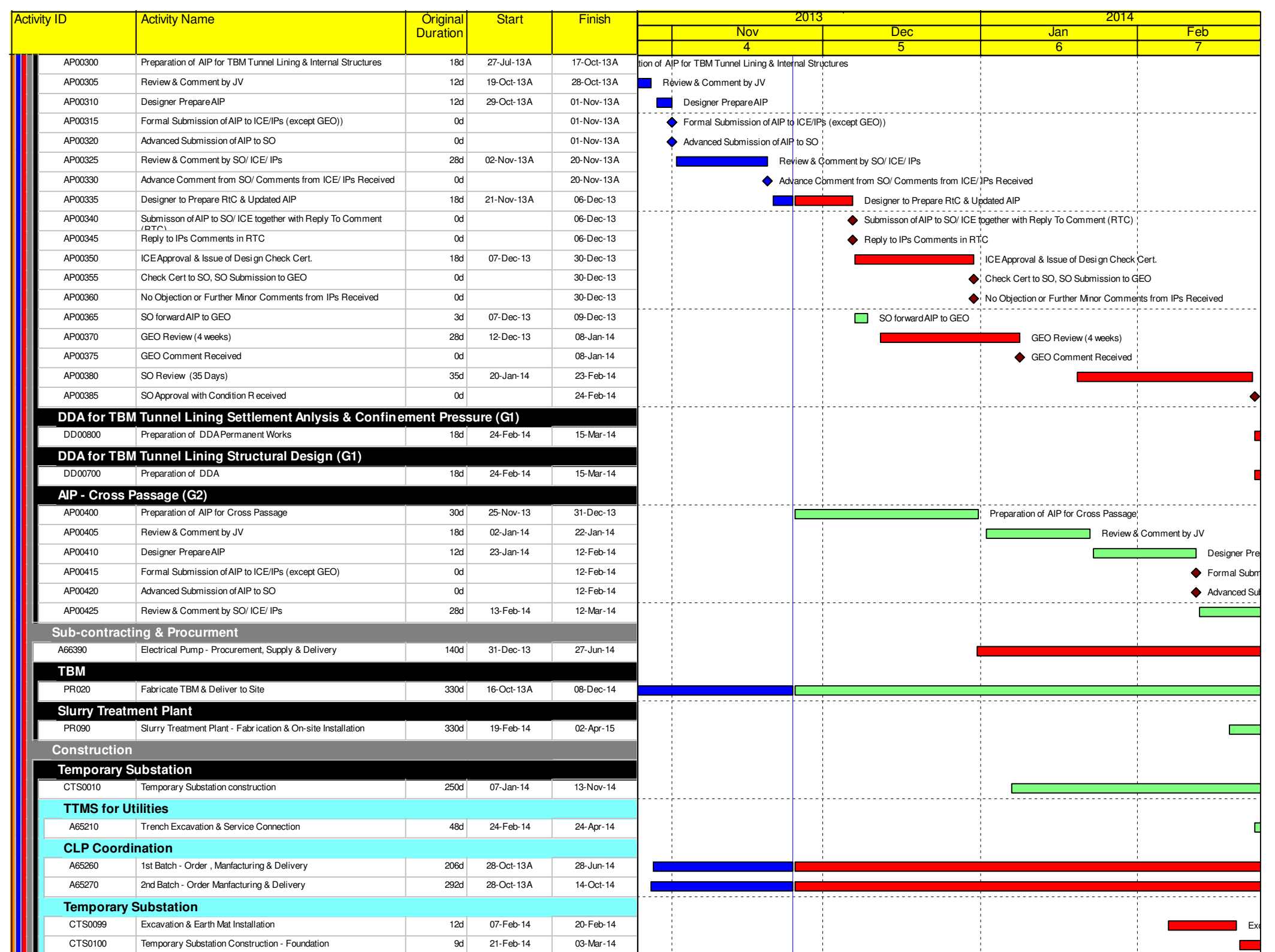
Activity ID	Activity Name	Original Duration	Start	Finish	2013				2014				
					Nov		Dec		Jan		Feb		
					4	5	6	7					
AP00520	Advanced Submission of AIP to SO	0d		10-Feb-14									◆ Advanced Subm
AP00525	Review & Comment by SO/ ICE/ IPs	28d	11-Feb-14	10-Mar-14									
<b>AIP - North &amp; South C&amp;C Box &amp; Approach Ramp (C1 &amp; E2)</b>													
AP00200	Preparation of AIP for North & South C&C Box & Approach Ramp	12d	01-Nov-13A	29-Nov-13									
AP00205	Review & Comment by JV	12d	30-Nov-13	13-Dec-13									
AP00210	Designer Prepare AIP	6d	14-Dec-13	20-Dec-13									
AP00215	Formal Submission of AIP to ICE/IPs (except GEO)	0d		20-Dec-13									◆ Formal Submission of AIP to ICE/IPs (except GEO)
AP00220	Advanced Submission of AIP to SO	0d		20-Dec-13									◆ Advanced Submission of AIP to SO
AP00225	Review & Comment by SO/ ICE/ IPs	28d	21-Dec-13	17-Jan-14									
AP00230	Advance Commants from SO/ Comments from ICE/ IPs Received	0d		17-Jan-14									◆ Advance Commants from SO/ Comments from
AP00235	Designer to Prepare RTC & Updated AIP	18d	18-Jan-14	14-Feb-14									◆ Designer to
AP00240	Submission of AIP to SO/ ICE together with Reply To Comment (RTC)	0d		14-Feb-14									◆ Submissor
AP00245	Reply to IPs Comments in RTC	0d		14-Feb-14									◆ Reply to IP
AP00250	ICE Approval & Issue of Design Check Cert.	18d	15-Feb-14	07-Mar-14									
AP00265	SO forward AIP to GEO	3d	15-Feb-14	17-Feb-14									◆ SO for
AP00270	GEO Review (4 weeks)	28d	18-Feb-14	17-Mar-14									
AP00280	SO Review (35 Days)	35d	15-Feb-14	21-Mar-14									
<b>AIP - Roadworks &amp; Project Alignment (A19)</b>													
AP00100	Designer prepare AIP - Roadworks & Alignment	9d	05-Aug-13A	27-Sep-13A									
AP00105	Review & Comment by JV	6d	28-Sep-13A	04-Nov-13A									
AP00110	Designer Prepare AIP	6d	05-Nov-13A	07-Nov-13A									
AP00115	Formal Submission of AIP to ICE/IPs (except GEO)	0d		07-Nov-13A									◆ Formal Submission of AIP to ICE/IPs (except GEO)
AP00120	Advanced Submission of AIP to SO	0d		07-Nov-13A									◆ Advanced Submission of AIP to SO
AP00125	Review & Comment by SO/ ICE/ IPs	28d	08-Nov-13A	06-Dec-13									
AP00130	Advance Comment from SO/ Comments from ICE/ IPs Received	0d		06-Dec-13									◆ Advance Comment from SO/ Comments from ICE/ IPs Received
AP00135	Designer to Prepare RTC & Updated AIP	18d	07-Dec-13	30-Dec-13									◆ Designer to Prepare RTC & Updated AIP
AP00140	Submission of AIP to SO/ ICE together with Reply To Comment (RTC)	0d		30-Dec-13									◆ Submisson of AIP to SO/ ICE together with Reply To Comment (RTC)
AP00145	Reply to IPs Comments in RTC	0d		30-Dec-13									◆ Reply to IPs Comments in RTC
AP00150	ICE Approval & Issue of Design Check Cert.	18d	31-Dec-13	21-Jan-14									◆ ICE Approval & Issue of Design Check Ce
AP00155	Check Cert to SO	0d		21-Jan-14									◆ Check Cert to SO
AP00160	No Objection or Further Minor Comments from IPs Received	0d		21-Jan-14									◆ No Objection or Further Minor Comments
AP00180	SO Review (35 Days)	35d	05-Jan-14	08-Feb-14									◆ SO Review (35 D
AP00185	SO Approval with Condition R Received	0d		08-Feb-14									◆ SO Approval with C
<b>AIP - Sewage, Drainage, Waterworks &amp; UU (C2 &amp; E3)</b>													
AP01010	Designer Prepare AIP - Sewage, Drainage, Waterworks & UU	29d	24-Dec-13	29-Jan-14									
AP01015	Review & Comment by JV	12d	30-Jan-14	19-Feb-14									
AP01020	Designer Prepare AIP	6d	20-Feb-14	26-Feb-14									
<b>Method Statement Submission</b>													
<b>Method Statement of Construction Methodology of Dredging &amp; Disposal</b>													
MS1010	Preparation Method Statement for Dredging & Disposal	19d	27-Jul-13A	26-Aug-13A									
MS1020	Submit Method Statement to SO/ DC	0d		26-Aug-13A									
MS1030	SO Reviews & Comments/ DC Comments	28d	27-Aug-13A	24-Sep-13A									
MS1070	SO's Approval	0d		24-Sep-13A									
<b>Method Statement of Construction Methodology of Sloping &amp; Vertical Seawall</b>													
MS1190	Preparation Method Statement for Sloping & Vertical Seawall	19d	27-Jul-13A	12-Sep-13A									
MS1280	Submit Method Statement to SO/ DC	0d		12-Sep-13A									
MS1290	SO Reviews & Comments/ DC Comments	28d	13-Sep-13A	03-Oct-13A									
MS1390	Re-submission	9d	04-Oct-13A	21-Nov-13A									
MS1470	SO's Review	28d	22-Nov-13A	19-Dec-13									
MS1480	SO's Approval	0d		19-Dec-13									
<b>Method Statement of Reclamation Sequence &amp; Methods</b>													
MS1100	Preparation Method Statement for Reclamation	19d	27-Jul-13A	30-Nov-13									
MS1110	Submit Method Statement to SO/ DC	0d		30-Nov-13									
MS1120	SO Reviews & Comments/ DC Comments	28d	01-Dec-13	28-Dec-13									
MS1130	Re-submission	9d	30-Dec-13	09-Jan-14									
MS1140	DC Approval & Issue Check C.ert.	18d	10-Jan-14	30-Jan-14									
MS1150	SO's Review	28d	10-Jan-14	06-Feb-14									
MS1160	SO's Approval	0d		06-Feb-14									
<b>Method Statement of Construction Methodology of Band Drain Installation</b>													
MS1680	Preparation Method Statement for Band Drain Installation	19d	27-Jul-13A	21-Sep-13A									
MS1690	Submit Method Statement to SO/ DC	0d		21-Sep-13A									
MS1780	SO Reviews & Comments/ DC Comments	28d	22-Sep-13A	27-Nov-13									
MS1790	Re-submission	9d	28-Nov-13	07-Dec-13									
MS1880	SO's Review	28d	08-Dec-13	04-Jan-14									
MS1890	SO's Approval	0d		04-Jan-14									
MS1980	DC Approval & Issue Check C.ert.	18d	09-Dec-13	31-Dec-13									
<b>Method Statement of Ground Investigation - CPT</b>													
MS2800	Preparation Method Statement for GI & Accociated Temp.works	18d	05-Aug-13A	29-Aug-13A									
MS2810	Submit Method Statement to SO	0d		29-Aug-13A									
MS2820	SO's Approval	28d	30-Aug-13A	10-Sep-13A									
<b>Method Statement of Ground Investigation - Northern Landfall &amp; Tunnel</b>													
MS2850	Preparation Method Statement for GI & Accociated Temp.works	18d	21-Oct-13A	29-Nov-13									
MS2860	Submit Method Statement to SO	0d		29-Nov-13									
MS2870	SO's Approval	28d	30-Nov-13	27-Dec-13									
<b>Method Statement of Temp.Fill Slopes &amp; Surcharge in Reclamation</b>													
MS3100	Preparation Method Statement for Temp.Fill Slopes & Surcharge in Reclamation	25d	25-Nov-13	23-Dec-13									
MS3110	Submit Method Statement to SO	0d		23-Dec-13									
MS3120	SO Reviews & Comments	28d	24-Dec-13	20-Jan-14									
MS3130	Re-submission	18d	21-Jan-14	17-Feb-14									
MS3140	SO's Review	28d	18-Feb-14	17-Mar-14									
<b>Method Statement of Full Details of Materials,Plant &amp; Operations involved in Diaphragm Wall</b>													

Activity ID	Activity Name	Original Duration	Start	Finish	2013				2014				
					Nov		Dec		Jan		Feb		
					4	5	6	7					
MS3300	Preparation Full Details of Materials, Plant & Operation involved in Diaphragm Wall	25d	25-Nov-13	23-Dec-13									
MS3310	Submit Method Statement to SO	0d		23-Dec-13									
MS3320	SO Reviews & Comments	28d	24-Dec-13	20-Jan-14									
MS3330	Re-submission	18d	21-Jan-14	17-Feb-14									
MS3340	SO's Review	28d	18-Feb-14	17-Mar-14									
<b>Method Statement of Providing the Groundwater Cut-offs &amp; Pumping Test</b>													
MS1900	Preparation Method Statement for Groundwater Cut-off & Pumping Test	25d	21-Feb-14	21-Mar-14									
<b>Sub-contracting &amp; Procurement</b>													
<b>Employ an Instrumentation Specialist Subcontractor</b>													
A3710	Preparation of Employ an Instrumentation Specialist Subcontractor	36d	05-Aug-13A	14-Dec-13									
A63780	SO's Approval	24d	16-Dec-13	15-Jan-14									
<b>Seawall Block</b>													
PR060	Seawall Block - Procurement	21d	26-Jul-13A	05-Oct-13A									
PR070	Seawall Block - Fabrication	0d	07-Oct-13A										
<b>Construction</b>													
<b>Establishment</b>													
<b>Sediment Quality Report/Dumping Permit</b>													
DS100	Cross Boundary Dumping Application/Approval	58d	24-Aug-13A	07-Jan-14									
DS110	Letter to CEDD for AMFC	0d		30-Aug-13A									
DS145	Application Process for AMFC by CEDD (Cat. Mf)	21d	30-Aug-13A	30-Aug-13A									
DS150	Prepare and Submission by JV	6d	31-Aug-13A	09-Sep-13A									
DS160	Dumping Permit - Application Process	21d	09-Sep-13A	29-Oct-13A									
DS170	Dumping Permit Issuance (Cat. Mf)	0d		29-Oct-13A									
DS175	Application Process for AMFC by CEDD (Cat. L)	21d	30-Aug-13A	16-Sep-13A									
DS180	Prepare and Submission by JV	6d	17-Sep-13A	17-Sep-13A									
DS190	Dumping Permit - Application Process	21d	18-Sep-13A	29-Oct-13A									
DS200	Dumping Permit Issuance (Cat. L)	0d		29-Oct-13A									
DS205	Application Process for AMFC by CEDD (Cat. Mp)	21d	30-Aug-13A	16-Sep-13A									
DS210	Prepare and Submission by JV	6d	17-Sep-13A	17-Sep-13A									
DS220	Dumping Permit - Application Process	21d	18-Sep-13A	29-Oct-13A									
DS230	Dumping Permit Issuance (Cat. Mp)	0d		29-Oct-13A									
<b>Apply for Mairie Department Notice</b>													
CGI0260	Prepare & Submit MDN Application for Dredging & Reclamation	20d	27-Jul-13A	11-Sep-13A									
CGI0265	1st MMWG Meeting	0d		19-Aug-13A									
CGI0270	MDN Process for Dredging & Reclamation	21d	12-Sep-13A	09-Oct-13A									
<b>SO accommodation</b>													
CTW0000	SO accommodation	42d	18-Nov-13A	22-Jan-14									
<b>Additional GI</b>													
CGI0300	Additional GI for Northern Landfall	60d	28-Oct-13A	31-May-14									
<b>Pontoon Temporary Re provisioning</b>													
CTW0020	Temp Pontoon - Material Sourcing & Delivery	9d	09-Sep-13A	19-Oct-13A									
CTW0025	Temp Pontoon - Prefabrication	9d	21-Oct-13A	09-Nov-13A									
CTW0030	Temp Pontoon - Final fabrication	18d	10-Nov-13A	27-Nov-13									
CTW0040	Temp Pontoon - Testing & Final Paints	9d	28-Nov-13	07-Dec-13									
CTW0050	Temp Pontoon - Delivery to RTT	4d	09-Dec-13	12-Dec-13									
<b>Seawall, Reclamation &amp; Surcharge, Ph.1</b>													
<b>Seawall and Reclamation (50m interval)</b>													
<b>200m Leading Seawall Achievement</b>													
NR10000	200m Leading Seawall for Reclamation: 0-50	0d	24-Jan-14										
NR10010	200m Leading Seawall for Reclamation: 50-100	0d	08-Feb-14										
NR10020	200m Leading Seawall for Reclamation: 100-150	0d	17-Feb-14										
<b>Zone E</b>													
<b>Vertical Seawall</b>													
NR10150	VS - Dredging	2d	01-Nov-13A	07-Nov-13A									
NR10160	VS - Dredging	2d	08-Nov-13A	16-Nov-13A									
NR10170	VS - Dredging	2d	17-Nov-13A	25-Nov-13									
NR10180	VS - Dredging	2d	26-Nov-13	27-Nov-13									
NR10190	VS - Rock Grade 400	7d	18-Nov-13A	23-Nov-13A									
NR10200	VS - Rock Grade 400	7d	25-Nov-13	02-Dec-13									
NR10210	VS - Rock Grade 400	7d	03-Dec-13	10-Dec-13									
NR10220	VS - Rock Grade 400	6d	11-Dec-13	17-Dec-13									
NR10230	VS - Levelling Stone	3d	03-Dec-13	05-Dec-13									
NR10240	VS - Levelling Stone	3d	06-Dec-13	09-Dec-13									
NR10250	VS - Levelling Stone	3d	11-Dec-13	13-Dec-13									
NR10260	VS - Levelling Stone	3d	18-Dec-13	20-Dec-13									
NR10270	VS - Seawall Block	8d	06-Dec-13	14-Dec-13									
NR10280	VS - Seawall Block	8d	16-Dec-13	24-Dec-13									
NR10290	VS - Seawall Block	8d	27-Dec-13	06-Jan-14									
NR10300	VS - Seawall Block	8d	07-Jan-14	15-Jan-14									
NR10310	VS - Rockfill Type A	3d	27-Dec-13	30-Dec-13									
NR10320	VS - Rockfill Type A	3d	31-Dec-13	03-Jan-14									
NR10330	VS - Rockfill Type A	3d	07-Jan-14	09-Jan-14									
NR10340	VS - Rockfill Type A	3d	16-Jan-14	18-Jan-14									
NR10350	VS - Geotextile	1d	04-Jan-14	04-Jan-14									
NR10360	VS - Geotextile	1d	06-Jan-14	06-Jan-14									
NR10370	VS - Geotextile	1d	10-Jan-14	10-Jan-14									
NR10380	VS - Geotextile	1d	20-Jan-14	20-Jan-14									
NR10390	VS - Granular Filter	4d	07-Jan-14	10-Jan-14									
NR10400	VS - Granular Filter	4d	11-Jan-14	15-Jan-14									
NR10410	VS - Granular Filter	4d	16-Jan-14	20-Jan-14									
NR10420	VS - Granular Filter	4d	21-Jan-14	24-Jan-14									











Activity ID	Activity Name	Orig Dur	Planned Start	Planned Finish	Current Start	Current Finish	2014					
							Feb	Mar	Apr	May	Jun	
<b>TMCLK - Northern Connection Sub-Sea Tunnel Section</b>												
<b>Construction</b>												
<b>Northern Landfall</b>												
<b>North Reclamation (Phase 1)</b>												
<b>Construction</b>												
DDP10000	Temporary Pontoon Inspection & Obtain License	8	23-Nov-13	02-Dec-13	01-Feb-14	04-Feb-14						
<b>Ground Investigation</b>												
DDP09010	Ground Investigation (Phase 2) - Northern Landfall & Sub-sea Tunnel	100	25-Oct-13	30-Apr-14	25-Oct-13	30-Apr-14						
<b>Zone E</b>												
NRC13810	Temporary Seawall Stage 1 - Band Drain	6	30-Dec-13	06-Jan-14	20-Jan-14	20-Feb-14						
NRC13820	Temporary Seawall Stage 1 - Rockfill - G200 up to -3.0mPD	9	07-Jan-14	16-Jan-14	21-Feb-14	02-Mar-14						
NRC13830	Temporary Seawall Stage 1 - Rockfill - G200 up to +4.0mPD	6	17-Jan-14	23-Jan-14	03-Mar-14	08-Mar-14						
<b>Vertical Seawall</b>												
NRC10250	VS - Levelling Stone - Zone E - (CH50 to 100)	4	26-Nov-13	29-Nov-13	04-Feb-14	08-Feb-14						
NRC10260	VS - Levelling Stone - Zone E - (CH100 to 150)	4	30-Nov-13	04-Dec-13	09-Feb-14	12-Feb-14						
NRC10270	VS - Levelling Stone - Zone E - (CH150 to 205)	5	11-Dec-13	16-Dec-13	13-Feb-14	18-Feb-14						
NRC10310	VS - Seawall Block - Zone E - (CH150 to 205)	6	20-Dec-13	02-Jan-14	22-Jan-14	05-Mar-14						
NRC10320	VS - Rockfill Type A - Zone E - (CH0 to 50)	2	12-Dec-13	14-Dec-13	25-Jan-14	03-Mar-14						
NRC10330	VS - Rockfill Type A - Zone E - (CH50 to 100)	2	16-Dec-13	18-Dec-13	05-Feb-14	04-Mar-14						
NRC10340	VS - Rockfill Type A - Zone E - (CH100 to 150)	1	20-Dec-13	23-Dec-13	15-Feb-14	07-Mar-14						
NRC10350	VS - Rockfill Type A - Zone E - (CH150 to 205)	4	03-Jan-14	07-Jan-14	08-Mar-14	12-Mar-14						
NRC10360	VS - Geotextile - Zone E - (CH0 to 50)	1	19-Dec-13	20-Dec-13	25-Jan-14	05-Mar-14						
NRC10370	VS - Geotextile - Zone E - (CH50 to 100)	1	21-Dec-13	23-Dec-13	05-Feb-14	06-Mar-14						
NRC10380	VS - Geotextile - Zone E - (CH100 to 150)	1	24-Dec-13	27-Dec-13	15-Feb-14	10-Mar-14						
NRC10390	VS - Geotextile - Zone E - (CH150 to 205)	2	08-Jan-14	09-Jan-14	13-Mar-14	14-Mar-14						
NRC10400	VS - Granular Filter - Zone E - (CH0 to 50)	3	24-Dec-13	30-Dec-13	25-Jan-14	07-Mar-14						
NRC10410	VS - Granular Filter - Zone E - (CH50 to 100)	3	31-Dec-13	04-Jan-14	05-Feb-14	08-Mar-14						
NRC10420	VS - Granular Filter - Zone E - (CH100 to 150)	1	06-Jan-14	09-Jan-14	15-Feb-14	14-Mar-14						
NRC10430	VS - Granular Filter - Zone E - (CH150 to 205)	5	10-Jan-14	15-Jan-14	15-Mar-14	20-Mar-14						
NRC10480	VS - Mass Concrete Capping - Zone E - (CH0 to 50)	8	02-May-14	12-May-14	02-May-14	12-May-14						
NRC10490	VS - Mass Concrete Capping - Zone E - (CH50 to 100)	8	13-May-14	21-May-14	13-May-14	21-May-14						
NRC10500	VS - Mass Concrete Capping - Zone E - (CH100 to 150)	8	22-May-14	30-May-14	22-May-14	30-May-14						
NRC10510	VS - Mass Concrete Capping - Zone E - (CH150 to 205)	11	31-May-14	13-Jun-14	31-May-14	13-Jun-14						
<b>Reclamation</b>												
NRC10540	Reclamation - Geotextile - Zone E - (CH100 to 150)	6	14-Feb-14	20-Feb-14	22-Jan-14	10-Feb-14						
NRC10550	Reclamation - Geotextile - Zone E - (CH150 to 205)	5	21-Feb-14	27-Feb-14	10-Feb-14	10-Mar-14						
NRC10570	Reclamation - Sand Blanket - Zone E - (CH50 to 100)	2	14-Feb-14	15-Feb-14	08-Jan-14	27-Feb-14						
NRC10580	Reclamation - Sand Blanket - Zone E - (CH100 to 150)	1	21-Feb-14	22-Feb-14	12-Feb-14	10-Mar-14						
NRC10590	Reclamation - Sand Blanket - Zone E - (CH150 to 205)	2	28-Feb-14	01-Mar-14	11-Mar-14	12-Mar-14						
NRC10600	Reclamation - Band Drain - Zone E - (CH0 to 50)	4	10-Feb-14	13-Feb-14	20-Jan-14	08-Feb-14						
NRC10610	Reclamation - Band Drain - Zone E - (CH50 to 100)	3	17-Feb-14	20-Feb-14	10-Feb-14	10-Mar-14						
NRC10620	Reclamation - Band Drain - Zone E - (CH100 to 150)	4	24-Feb-14	27-Feb-14	11-Mar-14	14-Mar-14						
NRC10630	Reclamation - Band Drain - Zone E - (CH150 to 205)	4	03-Mar-14	06-Mar-14	13-Mar-14	17-Mar-14						
NRC10640	Public Fill - Zone E - (CH0 to 50) to -2.5mPD	5	15-Feb-14	20-Feb-14	10-Mar-14	14-Mar-14						
NRC10650	Public Fill - Zone E - (CH50 to 100) to -2.5mPD	5	21-Feb-14	26-Feb-14	15-Mar-14	20-Mar-14						
NRC10660	Public Fill - Zone E - (CH100 to 150) to -2.5mPD	4	07-Mar-14	11-Mar-14	29-Mar-14	02-Apr-14						
NRC10670	Public Fill - Zone E - (CH150 to 205) to -2.5mPD	4	28-Mar-14	01-Apr-14	24-Apr-14	28-Apr-14						
NRC10680	Public Fill - Zone E - (CH0 to 50) to +2.5mPD	7	27-Feb-14	06-Mar-14	21-Mar-14	28-Mar-14						
NRC10690	Public Fill - Zone E - (CH50 to 100) to +2.5mPD	7	12-Mar-14	19-Mar-14	03-Apr-14	11-Apr-14						
NRC10700	Public Fill - Zone E - (CH100 to 150) to +2.5mPD	7	20-Mar-14	27-Mar-14	12-Apr-14	23-Apr-14						
NRC10710	Public Fill - Zone E - (CH150 to 205) to +2.5mPD	7	29-Mar-14	07-Apr-14	25-Apr-14	03-May-14						
NRC10720	Public Fill - Zone E - (CH0 to 50) to +6.0mPD	7	20-Mar-14	27-Mar-14	12-Apr-14	23-Apr-14						
NRC10730	Public Fill - Zone E - (CH50 to 100) to +6.0mPD	7	02-Apr-14	10-Apr-14	29-Apr-14	08-May-14						
NRC10740	Public Fill - Zone E - (CH100 to 150) to +6.0mPD	7	11-Apr-14	22-Apr-14	09-May-14	16-May-14						
NRC10750	Public Fill - Zone E - (CH150 to 205) to +6.0mPD	7	23-Apr-14	30-Apr-14	17-May-14	24-May-14						
<b>Zone D1</b>												
<b>Vertical Seawall</b>												
NRC10880	VS - Rock Grade 400 - Zone D1 - (CH305 to 355)	10	14-Jan-14	24-Jan-14	20-Jan-14	04-Feb-14						
NRC10910	VS - Levelling Stone - Zone D1 - (CH205 to 255)	2	14-Jan-14	21-Jan-14	06-Feb-14	08-Mar-14						
NRC10920	VS - Levelling Stone - Zone D1 - (CH255 to 305)	4	22-Jan-14	25-Jan-14	10-Mar-14	13-Mar-14						
NRC10930	VS - Levelling Stone - Zone D1 - (CH305 to 355)	4	27-Jan-14	30-Jan-14	14-Mar-14	18-Mar-14						
NRC10960	VS - Seawall Block - Zone D1 - (CH205 to 255)	9	22-Jan-14	10-Feb-14	06-Feb-14	11-Mar-14						
NRC10970	VS - Seawall Block - Zone D1 - (CH255 to 305)	7	11-Feb-14	18-Feb-14	14-Feb-14	21-Mar-14						
NRC10980	VS - Seawall Block - Zone D1 - (CH305 to 355)	7	19-Feb-14	26-Feb-14	22-Mar-14	29-Mar-14						
NRC11010	VS - Rockfill Type A - Zone D1 - (CH205 to 255)	6	19-Feb-14	25-Feb-14	22-Mar-14	28-Mar-14						
NRC11020	VS - Rockfill Type A - Zone D1 - (CH255 to 305)	3	26-Feb-14	28-Feb-14	29-Mar-14	01-Apr-14						
NRC11030	VS - Rockfill Type A - Zone D1 - (CH305 to 355)	3	01-Mar-14	04-Mar-14	02-Apr-14	04-Apr-14						
NRC11060	VS - Geotextile - Zone D1 - (CH205 to 255)	3	01-Mar-14	04-Mar-14	02-Apr-14	04-Apr-14						
NRC11070	VS - Geotextile - Zone D1 - (CH255 to 305)	2	05-Mar-14	06-Mar-14	07-Apr-14	08-Apr-14						
NRC11080	VS - Geotextile - Zone D1 - (CH305 to 355)	2	07-Mar-14	08-Mar-14	09-Apr-14	10-Apr-14						
NRC11140	VS - Granular Filter - Zone D1 - (CH205 to 255)	7	07-Mar-14	14-Mar-14	09-Apr-14	16-Apr-14						
NRC11210	VS - Granular Filter - Zone D1 - (CH255 to 305)	4	15-Mar-14	19-Mar-14	17-Apr-14	24-Apr-14						
NRC11280	VS - Granular Filter - Zone D1 - (CH305 to 355)	4	20-Mar-14	24-Mar-14	25-Apr-14	29-Apr-14						
NRC11720	VS - Mass Concrete Capping - Zone D1 - (CH205 to 255)	15	02-May-14	20-May-14	10-May-14	28-May-14						
NRC11790	VS - Mass Concrete Capping - Zone D1 - (CH255 to 305)	8	21-May-14	29-May-14	28-May-14	06-Jun-14						
<b>Sloping Seawall</b>												
NRC11940	SS - Bulk Dredging - Zone D1 - (CH205 to 355)	3	06-Dec-13	09-Dec-13	16-Jan-14	09-Feb-14						
NRC1202020	VS - Rock Grade 400 - Zone D1 - RTT	4	11-Dec-13	14-Dec-13	29-Jan-14	09-Feb-14						
NRC1202030	VS - Levelling Stone - Zone D1 - RTT	2	16-Dec-13	17-Dec-13	03-Mar-14	04-Mar-14						
NRC1202040	VS - Seawall Block - Zone D1 - RTT	5	18-Dec-13	24-Dec-13	06-Feb-14	05-Mar-14						
NRC1202050	VS - Rockfill Type A - Zone D1 - RTT	2	27-Dec-13	28-Dec-13	06-Mar-14	07-Mar-14						
NRC1202060	VS - Geotextile - Zone D1 - RTT	1	30-Dec-13	30-Dec-13	08-Mar-14	08-Mar-14						
NRC1202070	VS - Granular Filter - Zone D1 - RTT	2	31-Dec-13	02-Jan-14	10-Mar-14	11-Mar-14						
NRC1202090	VS - Mass Concrete Capping - Zone D1 - RTT	4	03-Apr-14	03-May-14	23-May-14	28-May-14						
NRC12110	SS - Dredging - Zone D1 - (CH305 to 355)	2	03-Jan-14	04-Jan-14	27-Jan-14	07-Feb-14						
NRC12290	SS - Rock Grade 400 - Zone D1 - (CH255 to 305) to +2.5mPD	15	16-Dec-13	04-Jan-14	12-Feb-14	19-Feb-14						
NRC12330	SS - Rock Grade 400 - Zone D1 - (CH305 to 355) to +2.5mPD	11	06-Jan-14	22-Jan-14	20-Feb-14	05-Mar-14						
NRC13610	SS - Armour Rock Underlayer - Zone D1 - (CH255 to 305)	5	23-Jan-14	28-Jan-14	06-Mar-14	11-Mar-14						
NRC13690	SS - Armour Rock Underlayer - Zone D1 - (CH305 to 355)	5	29-Jan-14	10-Feb-14	12-Mar-14	17-Mar-14						
NRC14070	SS - Armour Rock - Zone D1 - (CH255 to 305)	4	29-Jan-14	08-Feb-14	12-Mar-14	15-Mar-14						
NRC14080	SS - Armour Rock - Zone D1 - (CH305 to 355)	4	10-Feb-14	13-Feb-14	17-Mar-14	20-Mar-14						
NRC14120	SS - Mass Concrete Capping - Zone D1 - (CH255 to 305)	7	05-May-14	13-May-14	28-May-14	05-Jun-14						
NRC14170	Sloping - Rockfill Type A - Zone D1 - (CH255 to 305)	1	06-Jan-14	06-Jan-14	03-Mar-14	03-Mar-14						
NRC14180	Sloping - Rockfill Type A - Zone D1 - (CH305 to 355)	1	23-Jan-14	23-Jan-14	06-Mar-14	06-Mar-14						
NRC14220	Sloping - Geotextile - Zone D1 - (CH255 to 305)	1	07-Jan-14	07-Jan-14	04-Mar-14	04-Mar-14						
NRC14230	Sloping - Geotextile - Zone D1 - (CH305 to 355)	1	24-Jan-14	24-Jan-14	07-Mar-14	07-Mar-14						
NRC14270	Sloping - Granular Filter - Zone D1 - (CH255 to 305)	2	08-Jan-14	09-Jan-14	05-Mar-14	06-Mar-14						
NRC14280	Sloping - Granular Filter - Zone D1 - (CH305 to 355)	2	25-Jan-14	27-Jan-14	08-Mar-14	10-Mar-14						
NRC14310	Reclamation - Geotextile - Zone D1 - (CH205 to 255)	6	28-Feb-14	06-Mar-14	11-Mar-14	17-Mar-14						
NRC14320	Reclamation - Geotextile - Zone D1 - (CH255 to 305)	6	07-Mar-14	13-Mar-14	18-Mar-14	24-Mar-14						
NRC14330	Reclamation - Geotextile - Zone D1 - (CH305 to 355)	6	14-Mar-14	20-Mar-14	25-Mar-14	31-Mar-14						
NRC14360	Reclamation - Sand Blanket - Zone D1 - (CH205 to 255)	2	07-Mar-14	08-Mar-14	18-Mar-14	19-Mar-14						
NRC14370	Reclamation - Sand Blanket - Zone D1 - (CH255 to 305)	2	14-Mar-14	15-Mar-14	25-Mar-14	26-Mar-14						
NRC14380	Reclamation - Sand Blanket - Zone D1 - (CH305 to 355)	2	21-Mar-14	22-Mar-14	01-Apr-14	02-Apr-14						
NRC14410	Reclamation - Band Drain - Zone D1 - (CH205 to 255)	5	10-Mar-14	14-Mar-14	20-Mar-14	25-Mar-14						





Activity ID	Activity Name	Orig Dur	Planned Start	Planned Finish	Current Start	Current Finish	2014					
							Feb	Mar	Apr	May	Jun	
A6416040	F - Marine Sheet Piling (H2) - CH184 to CH231	3	16-Jan-14	18-Jan-14	07-Mar-14	10-Mar-14						
A6416050	F - Marine Sheet Piling (H1) - CH184 to CH231	3	20-Jan-14	22-Jan-14	11-Mar-14	13-Mar-14						
A6416060	F - Backfilling up to -7.5mPD & T1 Installation - CH184 to CH231	4	23-Jan-14	26-Jan-14	14-Mar-14	17-Mar-14						
A6416070	F - Backfilling up to -4.5mPD - CH184 to CH231	2	27-Jan-14	28-Jan-14	18-Mar-14	19-Mar-14						
A6416080	F - Backfilling up to +0.5mPD & T3 Installation - CH184 to CH231	6	29-Jan-14	03-Feb-14	20-Mar-14	25-Mar-14						
A6416085	F - Backfilling up to +3.0mPD - CH184 to CH231	2	04-Feb-14	05-Feb-14	26-Mar-14	27-Mar-14						
A6416090	F - Backfilling up to +6.0mPD - CH184 to CH231	2	06-Feb-14	07-Feb-14	28-Mar-14	29-Mar-14						
A6416230	F - Anchor wall Installation - CH184 to CH231	4	10-Mar-14	13-Mar-14	28-Apr-14	02-May-14						
A6416290	F - Backfilling up to 0.0mPD & G2 Installation to Anchor Wall - CH184 to CH231	3	14-Mar-14	16-Mar-14	03-May-14	05-May-14						
A6416295	F - Backfilling up to +3.0mPD & G1 Installation to Anchor Wall - CH184 to CH231	2	17-Mar-14	18-Mar-14	06-May-14	07-May-14						
A6416300	F - Backfilling up to +6.0mPD to Anchor Wall - CH184 to CH231	2	19-Mar-14	20-Mar-14	08-May-14	09-May-14						
A6416400	F - Backfilling up to +6.0mPD to Existing Seawall - CH184 to CH231	1	21-Mar-14	21-Mar-14	10-May-14	10-May-14						
<b>CH231 to CH278</b>		62	23-Jan-14	13-Apr-14	14-Mar-14	02-Jun-14						
A6416240	F - Marine Sheet Piling (H1) - CH231 to CH278	4	23-Jan-14	27-Jan-14	14-Mar-14	18-Mar-14						
A6416250	F - Marine Sheet Piling (H2) - CH231 to CH278	4	18-Mar-14	21-Mar-14	07-May-14	10-May-14						
A6416260	F - Backfilling up to -7.5mPD & T1 Installation - CH231 to CH278	4	22-Mar-14	25-Mar-14	11-May-14	14-May-14						
A6416270	F - Backfilling up to -4.5mPD - CH231 to CH278	2	26-Mar-14	27-Mar-14	15-May-14	16-May-14						
A6416273	F - Backfilling up to +0.5mPD & T3 Installation - CH231 to CH278	6	28-Mar-14	02-Apr-14	17-May-14	22-May-14						
A6416278	F - Backfilling up to +3.0mPD - CH231 to CH278	2	03-Apr-14	04-Apr-14	23-May-14	24-May-14						
A6416280	F - Backfilling up to +6.0mPD - CH231 to CH278	2	05-Apr-14	06-Apr-14	25-May-14	26-May-14						
A6416310	F - Anchor wall Installation - CH231 to CH278	4	07-Apr-14	10-Apr-14	27-May-14	30-May-14						
A6416480	F - Backfilling up to 0.0mPD & G2 Installation to Anchor Wall - CH231 to CH278	3	11-Apr-14	13-Apr-14	31-May-14	02-Jun-14						
<b>CH278 to CH327</b>		61	28-Jan-14	15-Apr-14	19-Mar-14	05-Jun-14						
A6416180	F - Pre-boring for Marine Sheet Pile - CH278 to CH327	6	28-Jan-14	10-Feb-14	19-Mar-14	25-Mar-14						
A6416190	F - Marine Sheet Piling (H1) - CH278 to CH327	5	25-Feb-14	01-Mar-14	10-Apr-14	15-Apr-14						
A6416195	F - Marine Sheet Piling (H2) - CH278 to CH327	5	12-Mar-14	17-Mar-14	29-Apr-14	05-May-14						
A6416200	F - Backfilling up to -3.5mPD & T2 Installation - CH278 to CH327	5	18-Mar-14	22-Mar-14	06-May-14	10-May-14						
A6416210	F - Backfilling up to +0.5mPD - CH278 to CH327	4	23-Mar-14	26-Mar-14	11-May-14	14-May-14						
A6416215	F - Backfilling up to +3.0mPD & T4 Installation - CH278 to CH327	5	27-Mar-14	31-Mar-14	15-May-14	19-May-14						
A6416220	F - Backfilling up to +6.0mPD - CH278 to CH327	2	01-Apr-14	02-Apr-14	20-May-14	21-May-14						
A6416340	F - Anchor wall Installation - CH278 to CH327	4	11-Apr-14	15-Apr-14	31-May-14	05-Jun-14						
<b>CH327 to CH381</b>		36	11-Feb-14	26-Mar-14	26-Mar-14	13-May-14						
A6416130	F - Pre-boring for Marine Sheet Pile - CH327 to CH381	6	11-Feb-14	17-Feb-14	26-Mar-14	01-Apr-14						
A6416140	F - Marine Sheet Piling (H1) - CH327 to CH381	4	03-Mar-14	06-Mar-14	16-Apr-14	23-Apr-14						
A6416145	F - Marine Sheet Piling (H2) - CH327 to CH381	4	07-Mar-14	11-Mar-14	24-Apr-14	28-Apr-14						
A6416150	F - Backfilling up to -3.5mPD & T2 Installation - CH327 to CH381	4	12-Mar-14	15-Mar-14	29-Apr-14	02-May-14						
A6416155	F - Backfilling up to +0.5mPD - CH327 to CH381	3	16-Mar-14	18-Mar-14	03-May-14	05-May-14						
A6416160	F - Backfilling up to +3.0mPD & T4 Installation - CH327 to CH381	5	19-Mar-14	23-Mar-14	06-May-14	10-May-14						
A6416170	F - Backfilling up to +6.0mPD - CH327 to CH381	3	24-Mar-14	26-Mar-14	11-May-14	13-May-14						
<b>Box Culvert Extension</b>		192	07-Feb-14	30-Sep-14	24-Mar-14	14-Nov-14						
<b>Construction</b>		192	07-Feb-14	30-Sep-14	24-Mar-14	14-Nov-14						
<b>CH000 to CH137</b>		24	02-May-14	30-May-14	26-May-14	23-Jun-14						
A6416600	Pre-drilling - CH27 to CH137	24	02-May-14	30-May-14	26-May-14	23-Jun-14						
<b>CH137 to CH184</b>		184	07-Feb-14	19-Sep-14	24-Mar-14	05-Nov-14						
A6416610	Pre-drilling - CH137 to CH184	24	07-Feb-14	06-Mar-14	24-Mar-14	24-Apr-14						
A6416720	Bored Pile Construction - A42 to A35	160	07-Mar-14	19-Sep-14	25-Apr-14	05-Nov-14						
<b>CH184 to CH231</b>		156	22-Mar-14	30-Sep-14	12-May-14	14-Nov-14						
A6416620	Pre-drilling - CH184 to CH231	24	22-Mar-14	23-Apr-14	12-May-14	09-Jun-14						
A6416730	Bored Pile Construction - A34 to A27	156	22-Mar-14	30-Sep-14	12-May-14	14-Nov-14						
<b>CH381 to CH399 (Box Culvert Connection)</b>		58	18-Feb-14	30-Apr-14	02-Apr-14	16-Jun-14						
A6416660	F - Pre-bored H-piles for CKS Temporary Land Access	6	18-Feb-14	24-Feb-14	02-Apr-14	09-Apr-14						
A6417000	F - Steel Bridge Installation for Land Access to Zone E	52	25-Feb-14	30-Apr-14	10-Apr-14	16-Jun-14						
<b>North Shafts Construction &amp; Tunnel Structure</b>		46	28-Mar-14	27-May-14	24-Apr-14	19-Jun-14						
<b>Construction</b>		46	28-Mar-14	27-May-14	24-Apr-14	19-Jun-14						
<b>North Launching Shaft ELS Foundation &amp; Capping Beam (Cell 1 to 3)</b>		18	28-Mar-14	22-Apr-14	24-Apr-14	16-May-14						
NSH1180	E - Setup for Launching Shaft ELS	18	28-Mar-14	22-Apr-14	24-Apr-14	16-May-14						
<b>North Launching Shaft ELS Foundation &amp; Capping Beam</b>		21	02-May-14	27-May-14	26-May-14	19-Jun-14						
NSH1210	E - Cell 4 to 6 - Pre-bored H-piles - Perm	21	02-May-14	27-May-14	26-May-14	19-Jun-14						
<b>CLP Temporary Substation</b>		124	31-Dec-13	31-May-14	27-Jan-14A	27-Jun-14						
<b>Construction</b>		124	31-Dec-13	31-May-14	27-Jan-14A	27-Jun-14						
DDP12540	Gazette & Traffic Advice Application	28	31-Dec-13	08-Feb-14	03-Mar-14	03-Apr-14						
DDP12550	RMO Application for TTMS Implementation	6	10-Feb-14	15-Feb-14	04-Apr-14	11-Apr-14						
DDP12720	Trench Excavation & Service Connection	60	17-Feb-14	17-May-14	12-Apr-14	27-Jun-14						
DDP1274010	Backfilling, Binding & 500mm Base Slab	16	20-Jan-14	13-Feb-14	27-Jan-14A	14-Feb-14A						
DDP1274020	Outerwall & Water Tank up to +6.14mPD - Rebar, Fwk	7	14-Feb-14	21-Feb-14	15-Feb-14A	21-Feb-14A						
DDP127402020	Outerwall & Water Tank up to +6.14mPD - Fwk Removal	2	22-Feb-14	24-Feb-14	22-Feb-14A	24-Feb-14A						
DDP1274030	Backfilling, Compacted Fill & Earth Mat Top Layer installation	7	24-Feb-14	07-Mar-14	24-Feb-14A	06-Mar-14						
DDP1274040	200mm thk on-grade Slab & Cable Trench - Rebar, Fwk	6	08-Mar-14	14-Mar-14	07-Mar-14	13-Mar-14						
DDP1274047	200mm thk on-grade Slab & Cable Trench - Remove Fwk	2	15-Mar-14	17-Mar-14	14-Mar-14	15-Mar-14						
DDP1274050	Concrete Plinth - Rebar, Fwk & Concreting	6	21-Mar-14	27-Mar-14	20-Mar-14	26-Mar-14						
DDP1275010	Oil Interceptor - Sheet piling & Excavation	7	24-Feb-14	03-Mar-14	24-Feb-14A	28-Feb-14A						
DDP1275020	Oil Interceptor to +4.31mPD - Rebar, Fwk	0	04-Mar-14	06-Mar-14	01-Mar-14A	05-Mar-14						
DDP1275027	Oil Interceptor to +4.31mPD - Fwk Removal	2	07-Mar-14	08-Mar-14	06-Mar-14	07-Mar-14						
DDP1275030	Oil Interceptor to +6.14mPD - Rebar, Fwk with Cast in Pipe	5	07-Mar-14	12-Mar-14	06-Mar-14	11-Mar-14						
DDP1275037	Oil Interceptor to +6.14mPD - Fwk Removal	2	13-Mar-14	14-Mar-14	12-Mar-14	13-Mar-14						
DDP127503710	Water Tank Slab at +8.0mPD - Rebar, Fwk	5	08-Mar-14	13-Mar-14	07-Mar-14	12-Mar-14						
DDP127503730	Water Tank Slab at +8.0mPD - Fwk Removal	2	14-Mar-14	15-Mar-14	13-Mar-14	14-Mar-14						
DDP1275040	Outerwall & Water Tank up to +7.7mPD - Rebar, Fwk	4	15-Mar-14	19-Mar-14	14-Mar-14	18-Mar-14						
DDP1275055	Outerwall & Water Tank up to +7.7mPD - Remove Fwk	2	20-Mar-14	21-Mar-14	19-Mar-14	20-Mar-14						
DDP1275060	Outerwall & Water Tank up to +9.0mPD - Rebar, Fwk	4	20-Mar-14	24-Mar-14	19-Mar-14	22-Mar-14						
DDP1275075	Outerwall & Water Tank up to +9.0mPD - Remove Fwk	2	25-Mar-14	26-Mar-14	24-Mar-14	25-Mar-14						
DDP127507510	Internal Wall up to +6.14mPD - Rebar, Fwk	7	15-Feb-14	22-Feb-14	15-Feb-14A	22-Feb-14A						
DDP127507530	Internal Wall up to +6.14mPD - Fwk Removal	2	24-Feb-14	25-Feb-14	23-Feb-14A	25-Feb-14A						
DDP127507540	Internal Wall up to +10.14mPD - Rebar, Fwk	5	15-Mar-14	20-Mar-14	14-Mar-14	19-Mar-14						
DDP127507560	Internal Wall up to +10.14mPD - Fwk Removal	2	21-Mar-14	22-Mar-14	20-Mar-14	21-Mar-14						
DDP1275080	Substation - Roof Structure - Rebar, Fwk	5	25-Mar-14	29-Mar-14	24-Mar-14	28-Mar-14						
DDP1275095	Substation - Roof Structure - Fwk Removal	2	31-Mar-14	01-Apr-14	29-Mar-14	31-Mar-14						
DDP1275100	Internal Wall up to +13.14mPD - Rebar, Fwk	8	25-Mar-14	02-Apr-14	24-Mar-14	01-Apr-14						
DDP1275120	Internal Wall up to +13.14 - Fwk Removal	2	03-Apr-14	04-Apr-14	02-Apr-14	03-Apr-14						
DDP1275140	CLP Substation - E&M, BS Installation	46	02-Apr-14	31-May-14	01-Apr-14	30-May-14						
DDP1276010	Substation - ABWF works	12	02-Apr-14	16-Apr-14	01-Apr-14	15-Apr-14						
DDP1276020	Substation - Metal works & Remaining civil works	18	17-Apr-14	13-May-14	16-Apr-14	12-May-14						
DDP1276030	Substation - E&M works	46	02-Apr-14	31-May-14	01-Apr-14	30-May-14						
<b>North Surface works for TBM Tunnelling</b>		60	10-May-14	08-Jul-14	01-Jun-14	30-Jul-14						
<b>Construction</b>		60	10-May-14	08-Jul-14	01-Jun-14	30-Jul-14						
<b>Zone D1</b>		60	10-May-14	08-Jul-14	01-Jun-14							