

Activity ID	Activity Name	Orig Dur	Planned Start	Planned Finish	Current Start	Current Finish	2015										
							Feb	Mar	Apr	May	Jun	Jul	Aug	Sep	Oct		
TMCLK - Northern Connection Sub-Sea Tunnel Section																	
Contract Dates																	
Site Possession Date																	
AD040	Portions: X1,(N10,11,13 & 14) - Sth Landfall	0	06-Aug-15		06-Aug-15*												◆ Portions: X1,(N10,11,13 & 14)
Handover Date																	
HD010	Portions: WA18C	0		06-Jan-15		25-May-15*											◆ Portions: WA18C
General Submissions																	
Environmental																	
Environmental Permit Submissions																	
Supplementary WMP of C&C Tunnel at Sth.Landfall																	
EP2110	Supplementary WMP of C&C Tunnel at Sth.Landfall	0		28-Jun-14		26-May-15											
Sediment Quality Report/Dumping Permit																	
Southern Landfall																	
Sediment Sampling & Testing Plan (SSTP) - if required																	
A6010030	Complete SSTP and Obtain EPD's approval	24	17-Feb-15	23-Mar-15	09-Feb-15A	08-Jun-15											◆ Complete SSTP and Obtain EPD's approval
A6010040	SSTP - EPD's approval for Shaft & C&C Tunnel Excavation	0		23-Sep-14		23-Mar-15A											◆ Shaft & C&C Tunnel Excavation
A6010050	SSTP - Clarified with EPD for exemption for Shaft & C&C Tunnel Dwall	0		23-Sep-14		23-Mar-15A											◆ Shaft & C&C Tunnel Dwall
Sediment Quality Report (SQR) - if required																	
A6418050	Liaise with HKBCF for advance GI	96	21-Nov-14	23-Mar-15	15-Dec-14A	10-Feb-15A											◆ Liaise with HKBCF for advance GI
A6418055	Advance Possession to Southern Landfall for G.I. Sampling	0		23-Mar-15		10-Feb-15A											◆ Advance Possession to Southern Landfall for G.I. Sampling
A6418060	Advance Ground Investigation works for Sediment sampling	24	24-Mar-15	24-Apr-15	10-Feb-15A	11-Jun-15											◆ Advance Ground Investigation works for Sediment sampling
A6418070	Sediment Sample Testing & Report preparation	120	25-Apr-15	16-Sep-15	12-Jun-15	04-Nov-15											◆ Sediment S
Dumping Permit for Load Dumping (Loading Permit) - if required																	
A6418082	Submit draft application document for Loading Permit to EPD for comment - for Dwall	96	24-Sep-14	19-Jan-15	26-May-15	16-Sep-15											◆ Submit draft application document for Loading Permit to EPD for comment - for Dwall
A6418086	Notify the results and issue Loading Permit for Local & Cross Boundary Crossing - for Dwall	24	17-Feb-15	23-Mar-15	17-Oct-15	14-Nov-15											◆ Notify the results and issue Loading Permit for Local & Cross Boundary Crossing
A6418090	Submit draft application document for Loading Permit to EPD for comment - for Excavation	96	23-Jul-15	14-Nov-15	07-Sep-15	02-Jan-16											◆ Submit draft application document for Loading Permit to EPD for comment - for Excavation
General Design Submissions																	
(A19) DDA for Roadworks & Project Alignment																	
DD68370	SO's Review	35	18-Sep-14	22-Oct-14	22-Dec-14A	15-Jul-15A											◆ SO's Review
(G6) IFA for Tunnel GBP																	
DD70750	SO's Review	35	29-Apr-14	02-Jun-14	09-Aug-14A	26-May-15											◆ SO's Review
DD70760	SO Approval with Condition R received	0		03-Jun-14		26-May-15											◆ SO Approval with Condition R received
Construction Supervision Plan																	
GEO1115	2nd GEO Review	28	29-Mar-14	25-Apr-14	01-Feb-14A	27-May-15											◆ 2nd GEO Review
PAYMENT MILESTONE																	
Design and Design Checking of the Works																	
PM1115	MS 2.9 Submit AIP for ground treatment at Southern Landfall	0		29-Oct-14		10-Jun-15											◆ MS 2.9 Submit AIP for ground treatment at Southern Landfall
PM1125	MS 2.11 Submit DDA for ground treatment at Southern Landfall	0		26-May-15		24-Oct-15											◆ MS 2.11 Submit DDA for ground treatment at Southern Landfall
PM1130	MS 2.12 Approve DDA for ground treatment at Southern Landfall by the Supervising Officer	0		24-Aug-15		20-Jan-16											◆ MS 2.12 Approve DD
PM1140	MS 2.14 Approve Risk Assessment of CLPP submarine cables - Tunnelling Works	0		15-Apr-15		05-Dec-14A											◆ MS 2.14 Approve Risk Assessment of CLPP submarine cables - Tunnelling Works
PM116520	MS 2.19.3 Submit DDA for Cross Passages	0		20-Dec-14		22-Jun-15											◆ MS 2.19.3 Submit DDA for Cross Passages
PM117010	MS 2.20.2 Approve DDA for TBM Sub-sea Tunnel - Internal Structure by the Supervising Officer	0		22-Dec-14		02-Jul-15											◆ MS 2.20.2 Approve DDA for TBM Sub-sea Tunnel - Internal Structure by the Supervising Officer
PM117020	MS 2.20.3 Approve DDA for Cross Passages by the Supervising Officer by the Supervising Officer	0		18-Mar-15		17-Sep-15											◆ MS 2.20.3 Approve DDA for Cross Passages by the Supervising Officer by the Supervising Officer
PM1180	MS 2.22 Approve AIP for Cut-and-cover Tunnel and Cross Passages at Southern Landfall by the Supervising Officer	0		17-Nov-14		27-May-15											◆ MS 2.22 Approve AIP for Cut-and-cover Tunnel and Cross Passages at Southern Landfall by the Supervising Officer
PM1185	MS 2.23 Submit DDA for Cut-and-cover Tunnel and Cross Passages at Southern Landfall	0		13-Jan-15		22-Jul-15											◆ MS 2.23 Submit DDA for Cut-and-cover Tunnel and Cross Passages at Southern Landfall
PM1190	MS 2.24 Approve DDA for Cut-and-cover Tunnel and Cross Passages at Southern Landfall by the Supervising Officer	0		17-Apr-15		19-Oct-15											◆ MS 2.24 Approve DDA for Cut-and-cover Tunnel and Cross Passages
PM1210	MS 2.28 Approve DDA for Cut-and-cover Tunnel and Cross Passages at Northern Landfall by the Supervising Officer	0		12-Feb-15		01-Jun-15											◆ MS 2.28 Approve DDA for Cut-and-cover Tunnel and Cross Passages at Northern Landfall by the Supervising Officer
PM1220	MS 2.30 Approve AIP for Approach Ramp Structures to Cut-and-cover Tunnels by the Supervising Officer	0		17-Nov-14		27-May-15											◆ MS 2.30 Approve AIP for Approach Ramp Structures to Cut-and-cover Tunnels by the Supervising Officer
PM1225	MS 2.31 Submit DDA for Approach Ramp Structures to Cut-and-cover Tunnels	0		13-Jan-15		22-Jul-15											◆ MS 2.31 Submit DDA for Approach Ramp Structures to Cut-and-cover Tunnels
PM1230	MS 2.32 Approve DDA for Approach Ramp Structures to Cut-and-cover Tunnels by the Supervising Officer	0		17-Apr-15		19-Oct-15											◆ MS 2.32 Approve DDA for Approach Ramp Structures to Cut-and-cover
PM1265	MS 2.39 Submit DDA for At grade Roads at Northern Landfall	0		25-Jul-14		06-Mar-15A											◆ MS 2.39 Submit DDA for At grade Roads at Northern Landfall
PM1285	MS 2.43 Submit DDA for South Ventilation Building	0		28-Mar-15		21-Nov-15											◆ MS 2.43 Submit DDA for South Ventilation Building
PM1290	MS 2.44 Approve DDA for South Ventilation Building by the Supervising Officer	0		25-Jun-15		22-Feb-16											◆ MS 2.44 Approve DDA for South Ventilation
PM1305	MS 2.47 Submit DDA for North Ventilation Building	0		31-Oct-14		30-Jun-15											◆ MS 2.47 Submit DDA for North Ventilation Building
PM1325	MS 2.51 Submit DDA for Facilities Provision for TCSS	0		19-Nov-14		01-Aug-15											◆ MS 2.51 Submit DDA for Facilities Provision for TCSS
PM1345	MS 2.55 Submit DDA for Drainage, Sewerage, Waterworks and Utilities at Southern Landfall	0		03-Jan-15		26-May-15											◆ MS 2.55 Submit DDA for Drainage, Sewerage, Waterworks and Utilities at Southern Landfall
PM1350	MS 2.56 Approve DDA for Drainage, Sewerage, Waterworks and Utilities at Southern Landfall by the Supervising Officer	0		08-Apr-15		27-Jul-15											◆ MS 2.56 Approve DDA for Drainage, Sewerage, Waterworks and Utilities
PM1370	MS 2.60 Approve DDA for Drainage, Sewerage, Waterworks and Utilities at Northern Landfall by the Supervising Officer	0		12-Dec-14		30-May-15											◆ MS 2.60 Approve DDA for Drainage, Sewerage, Waterworks and Utilities at Northern Landfall by the Supervising Officer
PM1405	MS 2.67 Submit DDA for TBM North Approach - Tunnel Internal Structure	0		21-Jun-14		26-May-15											◆ MS 2.67 Submit DDA for TBM North Approach - Tunnel Internal Structure
PM1410	MS 2.68 Approve DDA for TBM North Approach - Tunnel Internal Structure by the Supervising Officer	0		17-Sep-14		26-May-15											◆ MS 2.68 Approve DDA for TBM North Approach - Tunnel Internal Structure by the Supervising Officer
Tunnel Boring Machine (TBM) and Back-up Equipment for TBM Tunnel																	
PM1450	MS 3.1.3 Delivery to Site of cutter head of TBM for Southbound Tunnel	0		18-Feb-15		06-Mar-15A											◆ MS 3.1.3 Delivery to Site of cutter head of TBM for Southbound Tunnel
PM1455	MS 3.1.4 Delivery to Site of remaining parts of TBM and back-up equipment for Southbound Tunnel	0		30-Mar-15		06-Mar-15A											◆ MS 3.1.4 Delivery to Site of remaining parts of TBM and back-up equipment for
PM1460	MS 3.1.4 Complete site assembly, testing and commissioning of TBM for Southbound Tunnel	0		13-May-15		14-Jul-15											◆ MS 3.1.4 Complete site assembly, testing and commissioning
PM1510	MS 3.1.14 Delivery to Site of hyperbaric intervention equipments and facilities, including but not limited to equipment	0		04-May-15		23-Jun-15											◆ MS 3.1.14 Delivery to Site of hyperbaric intervention equipments
PM1515	MS 3.1.15 Complete site assembly, testing and commissioning of hyperbaric intervention equipment and facilities, includ	0		15-Jul-15		01-Sep-15											◆ MS 3.1.15 Complete site assembly,
PM1530	MS 3.1.18 Delivery to Site of hyperbaric intervention equipments and facilities, including but not limited to equipment	0		04-May-15		23-Jun-15											◆ MS 3.1.18 Delivery to Site of hyperbaric intervention equipments
PM1535	MS 3.1.19 Complete site assembly, testing and commissioning of hyperbaric intervention equipment and facilities, includ	0		15-Jul-15		01-Sep-15											◆ MS 3.1.19 Complete site assembly,
PM1555	MS 3.1.23 Complete site assembly, testing and commissioning of Slurry Treatment Plant	0		05-Mar-15		26-May-15											◆ MS 3.1.23 Complete site assembly, testing and commissioning of Slurry Treatment Pla
Cut-and-cover Tunnel at Northern Landfall																	
PM2450	MS 4.2.4 Delivery to Site of remaining parts of TBM and back-up equipment for Northbound Northern Landfall TBM Tunnel	0		19-Jan-15		27-May-15											◆ MS 4.2.4 Delivery to Site of remaining parts of TBM and back-up equipment for Northbound Northern Land
PM2455	MS 4.2.5 Complete site assembly, testing and commissioning of TBM for Northbound Northern Landfall TBM Tunnel	0		05-Mar-15		27-May-15											◆ MS 4.2.5 Complete site assembly, testing and commissioning of TBM for Northbound N
PM2475	MS 4.2.9 Complete all necessary works of launching shaft to facilitate launching of TBM	0		05-Feb-15		06-Mar-15A											◆ MS 4.2.9 Complete all necessary works of launching shaft to facilitate launching of TBM
PM2495	MS 4.2.13 Complete 100% of ground treatment for excavation of all Northern Landfall TBM Tunnels	0		30-Apr-15		26-May-15											◆ MS 4.2.13 Completed 100% of ground treatment for excavation of a
PM2500	MS 4.2.14 Completion of Permanent Lining for 25% of NB Northern Landfall TBM Tunnel	0		17-Apr-15		05-Sep-15											◆ MS 4.2.14 Completion of Permanent Lining for 25% of NB Northern Land
PM2505	MS 4.2.15 Completion of Permanent Lining for 50% of NB Northern Landfall TBM Tunnel	0		08-May-15		26-Sep-15											◆ MS 4.2.15 Completion of Permanent Lining for 50% of NB North

- Planned Bar
- Planned Bar - Critical
- ◆ Planned Milestone
- Progress bar
- ◆ Progress Milestone



Date	Revision	Checked	Approved
21-Feb-14	TMCLKDBJGEN/PRG#8505	SPa	WYu
28-Aug-14	TMCLKDBJGEN/PRG#8505 Rev.C	SPa	WYu

Activity ID	Activity Name	Orig Dur	Planned Start	Planned Finish	Current Start	Current Finish	2015												
							Feb	Mar	Apr	May	Jun	Jul	Aug	Sep	Oct				
PM2510	MS 4.2.16 Completion of Permanent Lining for 75% of NB Northern Landfall TBM Tunnel	0		25-Jun-15		11-Nov-15													◆ MS 4.2.16 Completion of Permanent Lining
PM2520	MS 4.2.18 Completion of Permanent Lining for 25% of SB Northern Landfall TBM Tunnel	0		12-Jun-15		15-Sep-15													◆ MS 4.2.18 Completion of Permanent Lining for 25%
PM2525	MS 4.2.19 Completion of Permanent Lining for 50% of SB Northern Landfall TBM Tunnel	0		27-Jun-15		29-Sep-15													◆ MS 4.2.19 Completion of Permanent Lining
PM2530	MS 4.2.20 Completion of Permanent Lining for 75% of SB Northern Landfall TBM Tunnel	0		27-Jul-15		28-Oct-15													◆ MS 4.2.20 Completion of Permanent Lining
Temporary Pontoon																			
PM3090	MS 6A.2 Provide the operation and maintenance services for the Temporary Pontoon in accordance with the Contract.	1433	03-Dec-13	25-Oct-18	08-Feb-14A	25-Oct-18													
Construction																			
Northern Landfall																			
North Reclamation (Phase 1)																			
Construction																			
Zone D1																			
Vertical Seawall																			
NRC11860	VS - Mass Concrete Coping - Zone D1 - (CH305 to 355)	8	16-Jul-14	24-Jul-14	05-Mar-15A	10-Mar-15A													
Reclamation																			
NRC15150	Surcharge Period - Zone D1 - (CH205 to 255)	180	21-Sep-14	19-Mar-15	10-Oct-14A	17-Mar-15A													Surcharge Period - Zone D1 - (CH205 to 255)
NRC15160	Surcharge Removal - Zone D1 - (CH205 to 255)	8	13-Aug-15	21-Aug-15	18-Mar-15A	31-Mar-15A													Surcharge Removal - Zone D1 - (CH205 to 255)
NRC15170	Surcharge Period - Zone D1 - (CH255 to 305)	180	07-Oct-14	04-Apr-15	16-Oct-14A	19-Apr-15A													Surcharge Period - Zone D1 - (CH255 to 305)
NRC15180	Surcharge Removal - Zone D1 - (CH255 to 305)	7	27-Aug-15	03-Sep-15	20-Apr-15A	05-Jan-16													Surcharge Removal - Zone D1 - (CH255 to 305)
NRC15190	Surcharge Period - Zone D1 - (CH305 to 355)	180	19-Oct-14	16-Apr-15	11-Nov-14A	31-May-15													Surcharge Period - Zone D1 - (CH305 to 355)
Zone D2																			
Vertical Seawall																			
NRC11930	VS - Mass Concrete Coping - Zone D2 - (CH355 to 405)	8	25-Jul-14	02-Aug-14	14-Feb-15A	24-Mar-15A													
NRC11980	VS - Mass Concrete Coping - Zone D2 - (CH405 to 443)	8	04-Aug-14	12-Aug-14	14-Feb-15A	28-Mar-15A													
Reclamation																			
NRC15210	Surcharge Period - Zone D2 - (CH355 to 405)	180	01-Nov-14	29-Apr-15	17-Nov-14A	31-May-15													Surcharge Period - Zone D2 - (CH355 to 405)
NRC15230	Surcharge Period - Zone D2 - (CH405 to 443)	180	12-Nov-14	10-May-15	21-Nov-14A	31-May-15													Surcharge Period - Zone D2 - (CH405 to 443)
Zone C1																			
Reclamation																			
NRC15250	Surcharge Period - Zone C1 - (CH443 to 493)	180	15-Oct-14	12-Apr-15	19-Nov-14A	31-May-15													Surcharge Period - Zone C1 - (CH443 to 493)
NRC15270	Surcharge Period - Zone C1 - (CH443 to 493)	180	08-Oct-14	05-Apr-15	31-Dec-14A	07-Jul-15													Surcharge Period - Zone C1 - (CH443 to 493)
Zone C2																			
Vertical Seawall																			
NRC14720	VS - Mass Concrete Coping - Zone C2 - (CH543 to 598)	8	22-Aug-14	30-Aug-14	01-Nov-14A	24-Apr-15A													
Sloping Seawall																			
NRC14870	SS - Armour Rock - Zone C2 - (CH543 to 598)	4	14-Mar-14	18-Mar-14	14-Apr-15A	23-Apr-15A													
Reclamation																			
NRC15290	Surcharge Period - Zone C2 - (CH543 to 598)	180	18-Sep-14	16-Mar-15	31-Dec-14A	04-Jul-15													Surcharge Period - Zone C2 - (CH543 to 598)
Zone B																			
Vertical Seawall																			
NRC11400	VS - Mass Concrete Coping - Zone B - (CH598 to 648)	8	01-Sep-14	10-Sep-14	21-Oct-14A	26-May-15													
NRC11410	VS - Mass Concrete Coping - Zone B - (CH648 to 698)	8	11-Sep-14	19-Sep-14	20-Nov-14A	27-May-15													
NRC11420	VS - Mass Concrete Coping - Zone B - (CH698 to 738)	8	20-Sep-14	29-Sep-14	02-Dec-14A	28-May-15													
Sloping Seawall																			
NRC11600	SS - Armour Rock - Zone B - (CH698 to 738)	4	17-Apr-14	24-Apr-14	20-Jan-15A	25-Feb-15A													
Reclamation																			
NRC11990	Public Fill - Zone B - (CH598 to 648) to +10mPD	6	02-May-15	08-May-15	20-Sep-14A	22-Sep-14A													Public Fill - Zone B - (CH598 to 648) to +10mPD
NRC15310	Surcharge Period - Zone B - (CH598 to 648)	180	09-May-15	04-Nov-15	22-Sep-14A	31-May-15													
NRC15320	Surcharge Removal - Zone B - (CH598 to 648)	10	05-Nov-15	16-Nov-15	01-Jun-15	11-Jun-15													
NRC15322	Surcharge Period - Zone B - (CH648 to 698) stage 1	180	30-Jan-16	27-Jul-16	22-Sep-14A	06-Jun-16													
NRC15350	Surcharge Period - Zone B - (CH698 to 738)	180	16-Aug-14	11-Feb-15	29-Sep-14A	31-May-15													
NRC15360	Surcharge Removal - Zone B - (CH698 to 738)	10	12-Feb-15	02-Mar-15	01-Jun-15	11-Jun-15													
Zone A1																			
Sloping Seawall																			
NRC12190	SS - Armour Rock - Zone A1 - (CH738 to 793)	4	25-Apr-14	29-Apr-14	25-Feb-15A	01-Mar-15A													
Reclamation																			
NRC15370	Surcharge Period - Zone A1 - (CH738 to 793)	180	22-Oct-14	19-Apr-15	25-Nov-14A	31-May-15													Surcharge Period - Zone A1 - (CH738 to 793)
NRC15380	Surcharge Removal - Zone A1 - (CH738 to 793)	10	20-Apr-15	30-Apr-15	01-Jun-15	11-Jun-15													Surcharge Removal - Zone A1 - (CH738 to 793)
Zone A2																			
Vertical Seawall																			
NRC12600	VS - Mass Concrete Coping - Zone A2 - (CH793 to 843)	8	11-Oct-14	20-Oct-14	19-Jan-15A	09-Mar-15A													
NRC12610	VS - Mass Concrete Coping - Zone A2 - (CH843 to 893)	8	21-Oct-14	29-Oct-14	22-Jan-15A	16-Mar-15A													
NRC12620	VS - Mass Concrete Coping - Zone A2 - (CH893 to 956)	18	30-Oct-14	19-Nov-14	31-Dec-14A	20-Mar-15A													
Sloping Seawall																			
NRC12750	SS - Armour Rock - Zone A2 - (CH793 to 843)	4	12-May-14	15-May-14	15-Apr-15A	24-Apr-15A													
NRC12760	SS - Armour Rock - Zone A2 - (CH843 to 893)	4	16-May-14	20-May-14	16-Apr-15A	27-May-15													
NRC12770	SS - Armour Rock - Zone A2 - (CH893 to 956)	4	21-May-14	24-May-14	16-Apr-15A	29-May-15													
Reclamation																			
NRC15390	Surcharge Period - Zone A2 - (CH793 to 843)	180	11-Nov-14	09-May-15	11-Nov-14A	31-May-15													Surcharge Period - Zone A2 - (CH793 to 843)
NRC15400	Surcharge Removal - Zone A2 - (CH738 to 956)	10	11-May-15	21-May-15	01-Jun-15	11-Jun-15													Surcharge Removal - Zone A2 - (CH738 to 956)
Zone F																			
CH184 to CH231																			
A6416230	F - Anchor wall Installation - CH184 to CH231	4	10-Mar-14	13-Mar-14	26-May-15	29-May-15													
A6416290	F - Backfilling up to +0.0mPD & G2 Installation to Anchor Wall - CH184 to CH231	3	14-Mar-14	16-Mar-14	16-Mar-15A	31-May-15													
A6416295	F - Backfilling up to +3.0mPD & G1 Installation to Anchor Wall - CH184 to CH231	2	17-Mar-14	18-Mar-14	16-Mar-15A	01-Jun-15													
A6416300	F - Backfilling up to +6.0mPD to Anchor Wall - CH184 to CH231	2	19-Mar-14	20-Mar-14	02-Jun-15	03-Jun-15													
A6416400	F - Backfilling up to +6.0mPD to Existing Seawall - CH184 to CH231	1	21-Mar-14	21-Mar-14	04-Jun-15	04-Jun-15													
CH231 to CH278																			
A6416273	F - Backfilling up to +0.5mPD & T3 Installation - CH231 to CH278	6	28-Mar-14	02-Apr-14	10-Nov-14A	12-Mar-15A													

Page 2 of 14
Project ID: TMCLK_DWPC 15W21
Data Date: 25-May-15

- Planned Bar
- Planned Bar - Critical
- Planned Milestone
- Progress bar
- Progress Milestone

TMCLK - Northern Connection Sub-Sea Tunnel Section
Detailed Works Programme (Rev. C) - Three months rolling programme
Progress as of 25-May-15



Date	Revision	Checked	Approved
21-Feb-14	TMCLKDWPC15W21PRG#8505	SPa	WYu
28-Aug-14	TMCLKDWPC15W21PRG#8505 Rev.C	SPa	WYu

Activity ID	Activity Name	Orig Dur	Planned Start	Planned Finish	Current Start	Current Finish	2015												
							Feb	Mar	Apr	May	Jun	Jul	Aug	Sep	Oct				
CH278 to CH327																			
A6416640	Predrilling - CH278 to CH327	24	26-Apr-14	26-May-14	18-Jun-15	17-Jul-15													
A6416750	Bored Pile Construction - A18 to A11 - Summary	117	27-May-14	15-Oct-14	18-Jul-15	04-Dec-15													
A6416810	Backfilling for Surcharge	12	16-Oct-14	29-Oct-14	25-May-15A	25-May-15A													
A6416840	Surcharge Period	105	30-Oct-14	11-Feb-15	25-May-15A	25-May-15A													
A6417240	Surcharge Removal - CH278 to CH327	6	12-Feb-15	18-Feb-15	25-May-15A	25-May-15A													
A6417250	Excavation down to S1 level - CH278 to CH327	8	26-Feb-15	06-Mar-15	05-Dec-15	14-Dec-15													
A6417260	S1 Installation - CH278 to CH327	9	07-Mar-15	17-Mar-15	15-Dec-15	24-Dec-15													
A6417270	Excavation down to Formation level - CH278 to CH327	5	18-Mar-15	23-Mar-15	28-Dec-15	02-Jan-16													
A6417330	Box Culvert Construction - CH278 to CH327	124	24-Mar-15	24-Aug-15	04-Jan-16	10-Jun-16													
A6417530	Bored Pile Construction - A18 to A11 - 2 out of 8 piles	30	27-May-14	02-Jul-14	18-Jul-15	21-Aug-15													
A6417540	Bored Pile Construction - A18 to A11 - 4 out of 8 piles	30	03-Jul-14	06-Aug-14	22-Aug-15	25-Sep-15													
CH327 to CH381																			
A6416650	Predrilling - CH327 to CH381	24	02-May-14	30-May-14	22-Jun-15	20-Jul-15													
A6416760	Bored Pile Construction - A10 to A03	86	31-May-14	11-Sep-14	21-Jul-15	31-Oct-15													
A6416820	Backfilling for Surcharge	12	12-Sep-14	25-Sep-14	25-May-15A	25-May-15A													
A6416850	Surcharge Period	105	26-Sep-14	08-Jan-15	25-May-15A	25-May-15A													
A6417280	Surcharge Removal - CH327 to CH381	6	09-Jan-15	15-Jan-15	25-May-15A	25-May-15A													
A6417320	Box Culvert Construction - CH327 to CH381	142	13-Feb-15	13-Aug-15	30-Nov-15	30-May-16													
A6417360	Backfilling to +6.0mPD - CH327 to CH381	12	14-Aug-15	27-Aug-15	31-May-16	14-Jun-16													
A6417570	Bored Pile Construction - A10 to A03 - 2 out of 8 piles	22	31-May-14	26-Jun-14	21-Jul-15	14-Aug-15													
A6417580	Bored Pile Construction - A10 to A03 - 4 out of 8 piles	21	27-Jun-14	22-Jul-14	15-Aug-15	08-Sep-15													
CH381 to CH399 (Box Culvert Connection)																			
A6416660	F - Prebored H-piles for CKS Temporary Land Access	6	18-Feb-14	24-Feb-14	16-Mar-15A	20-Mar-15A													
A6417000	F - Steel Bridge Installation for Land Access to Zone E	52	25-Feb-14	30-Apr-14	16-Mar-15A	22-Mar-15A													
A6417010	F - Available of Land Access to Zone E	0	02-May-14		22-Mar-15A														
North Shafts Construction & Tunnel Structure																			
Design Submission																			
(C1) DDA for North C&C Tunnel Permanent Structure - False Tunnel																			
DD71455	Review & Comment by JV	0			04-Feb-15A	25-Feb-15A													
DD71465	Designer prepare DDA	0			26-Feb-15A	03-Mar-15A													
DD71475	Formal Submission of DDA to ICE/ IPs	0				03-Mar-15A													
DD71485	Advanced Submission to SO	0				03-Mar-15A													
DD71495	IPs/SO's Advance comments / ICE comments	0			04-Mar-15A	26-Mar-15A													
DD71515	Comments Received	0				26-Mar-15A													
DD71525	Designer to Reply RTC + Update Submission	0			27-Mar-15A	04-Jun-15													
DD71535	Submit Updated DDA to SO/ ICE/ IPs	0			05-Jun-15														
DD71545	ICE Approval & Issue Check Cert	0			05-Jun-15	26-Jun-15													
DD71555	Submit ICE Check Cert to SO	0				26-Jun-15													
DD71565	IPs Review	0			05-Jun-15	02-Jul-15													
DD71575	IP's No Objection Received	0				02-Jul-15													
DD71585	SO's Review	0			05-Jun-15	09-Jul-15													
DD71595	SO Approval with Condition R received	0				09-Jul-15													
(C1) DDA for North Approach Ramp Permanent Structure																			
DD70780	Review & Comment by JV	12	21-Jul-14	02-Aug-14	13-Jan-15A	21-Mar-15A													
DD70785	Designer prepare DDA	6	04-Aug-14	09-Aug-14	21-Mar-15A	27-Mar-15A													
DD70790	Formal Submission of DDA to ICE/ IPs	0			09-Aug-14	27-Mar-15A													
DD70792	Advanced Submission to SO	0			09-Aug-14	27-Mar-15A													
DD70794	IPs/SO's Advance comments / ICE comments	28	10-Aug-14	06-Sep-14	27-Mar-15A	29-Jun-15													
DD70800	IPs/ SO's Advance Comments/ ICE Comments	28	07-Sep-14	04-Oct-14	30-Jun-15	27-Jul-15													
DD70805	Comments Received	0			04-Oct-14	27-Jul-15													
DD70810	Designer to Reply RTC + Update Submission	15	06-Oct-14	22-Oct-14	28-Jul-15	13-Aug-15													
DD70820	Submit Updated DDA to SO/ ICE/ IPs	0	23-Oct-14		14-Aug-15														
DD70830	ICE Approval & Issue Check Cert	18	23-Oct-14	12-Nov-14	14-Aug-15	03-Sep-15													
DD70850	IPs Review	28	23-Oct-14	19-Nov-14	14-Aug-15	10-Sep-15													
DD70870	SO's Review	35	23-Oct-14	26-Nov-14	14-Aug-15	17-Sep-15													
IFA North Approach Ramp ELS Stage 1 (Access Ramp Extension)																			
DD71655	IPs/SO's Advance comments / ICE comments	0			12-Feb-15A	30-Mar-15A													
DD71665	Comments Received	0				30-Mar-15A													
DD71675	Designer to Reply RTC + Update Submission	0			30-Mar-15A	08-May-15A													
DD71685	Submit Updated DDA to SO/ ICE/ IPs	0			08-May-15A														
DD71695	ICE Approval & Issue Check Cert	0			08-May-15A	08-May-15A													
DD71705	Submit ICE Check Cert to SO	0				08-May-15A													
DD71715	IPs Review	0			08-May-15A	08-May-15A													
DD71725	IP's No Objection Received	0				08-May-15A													
DD71735	SO's Review	0			08-May-15A	08-May-15A													
DD71745	SO Approval with Condition R received	0				08-May-15A													
IFA North Approach Ramp ELS																			
DD71755	Preparation IFA North Approach Ramp ELS Stage 2	0			24-Jan-15A	13-Mar-15A													
DD71765	Review & Comment by JV	0			13-Mar-15A	05-May-15A													
DD71775	Designer prepare DDA	0			05-May-15A	08-May-15A													
DD71785	Formal Submission of DDA to ICE/ IPs	0				08-May-15A													
DD71795	Advanced Submission to SO	0				08-May-15A													
DD71805	IPs/SO's Advance comments / ICE comments	0			08-May-15A	11-Jun-15													
DD71815	Comments Received	0				11-Jun-15													

- Planned Bar
- Planned Bar - Critical
- Planned Milestone
- Progress bar
- Progress Milestone

TMCLK - Northern Connection Sub-Sea Tunnel Section
Detailed Works Programme (Rev. C) - Three months rolling programme
Progress as of 25-May-15



Date	Revision	Checked	Approved
21-Feb-14	TMCLKDBJGEN/PRG/08505	SPa	WYu
28-Aug-14	TMCLKDBJGEN/PRG/08505 Rev.C	SPa	WYu

Activity ID	Activity Name	Orig Dur	Planned Start	Planned Finish	Current Start	Current Finish	2015											
							Feb	Mar	Apr	May	Jun	Jul	Aug	Sep	Oct			
DD71825	Designer to Reply RTC + Update Submission	0			12-Jun-15	11-Aug-15												
DD71835	Submit Updated DDA to SO/ ICE/ IPs	0			12-Aug-15													
DD71845	ICE Approval & Issue Check Cert	0			12-Aug-15	01-Sep-15												
DD71865	IPs Review	0			12-Aug-15	08-Sep-15												
DD71885	SO's Review	0			12-Aug-15	03-Oct-15												
Construction																		
North Launching Shaft Base Slab for TBM Launching																		
NSH1455	E - Tympanum construction for TBM break-in	12	20-Nov-14	03-Dec-14	29-Jan-15A	02-Apr-15A												
North C&C Tunnel Structure																		
NSH1240	E - NB Tunnel Structure - Perimeter Wall	108	18-Jul-15	24-Nov-15	19-Oct-15	04-Mar-16												
North Ventilation Shaft ELS Foundation & Capping Beam																		
A6415780	B - Diaphragm Wall - Shaft ELS	81	26-Aug-14	01-Dec-14	24-Nov-14A	28-Mar-15A												
A6415790	B - Instrumentation & Pump well Installation	6	02-Dec-14	08-Dec-14	06-Mar-15A	18-Apr-15A												
A6415795	B - Pumping Test for Excavation	7	09-Dec-14	15-Dec-14	21-Apr-15A	05-May-15A												
North Ventilation Shaft Excavation & Base Slab																		
A6415800	B - Vent Shaft Excavation (+6.0 to +4.0mPD) - Reclaimed Fill	5	02-Dec-14	06-Dec-14	02-May-15A	03-May-15A												
A6415810	B - Capping Beam Installation (+6.0mPD)	12	08-Dec-14	20-Dec-14	04-May-15A	28-May-15												
A6415820	B - Vent Shaft Excavation (+4.0 to -8.0mPD) - Reclaimed Fill	19	22-Dec-14	15-Jan-15	04-May-15A	15-May-15A												
A6415830	B - Ring Beam Installation (-5.5mPD)	6	16-Jan-15	22-Jan-15	15-May-15A	23-May-15A												
A6415840	B - Vent Shaft Excavation (-8.0 to -20.0mPD) - Fill/MD/ALLUVIUM	27	23-Jan-15	02-Mar-15	08-May-15A	17-Jun-15												
A6415850	B - Ring Beam Installation (-18.0mPD)	6	03-Mar-15	09-Mar-15	18-Jun-15	25-Jun-15												
A6415860	B - Vent Shaft Excavation (-20.0 to -32.0mPD) - CDG	27	10-Mar-15	14-Apr-15	26-Jun-15	28-Jul-15												
A6415870	B - Ring Beam Installation (-32.0mPD)	9	15-Apr-15	24-Apr-15	29-Jul-15	07-Aug-15												
A6415880	B - Vent Shaft Excavation (-32.0mPD to -38.8mPD) - Rock	69	25-Apr-15	18-Jul-15	08-Aug-15	30-Oct-15												
A6415890	B - Vent Shaft Bottom Base Slab for TBM Re-launching	36	20-Jul-15	29-Aug-15	31-Oct-15	11-Dec-15												
A6415990	B - Tympanum construction for TBM break-in/out	24	27-Jul-15	22-Aug-15	07-Nov-15	04-Dec-15												
North Surface works for TBM Tunnelling																		
Design Submission																		
(D1) IFA for Temp. Access to Portion N8A, N8B & N8C incl. Temp. Lighting																		
AP01500	Preparation of AIP Temporary Access Road to N8	33	02-Jan-14	15-Feb-14	02-Jan-14A	13-Mar-15A												
AP01505	Review & Comment by JV	12	17-Feb-14	01-Mar-14	13-Mar-15A	18-Mar-15A												
AP01510	Designer Prepare IFA	6	03-Mar-14	08-Mar-14	18-Mar-15A	20-Mar-15A												
AP01515	Formal Submission of IFA to ICE/IPs	0		08-Mar-14		20-Mar-15A												
AP01520	Advanced Submission of IFA to SO	0		08-Mar-14		20-Mar-15A												
AP01525	Review & Comment by SO/ ICE/ IPs	28	09-Mar-14	05-Apr-14	20-Mar-14A	15-May-15A												
AP01530	Advance Comments from SO/ Comments from ICE/ IPs Received	0		07-Apr-14		15-May-15A												
AP01535	Designer to Prepare RTC & Updated AIP	18	07-Apr-14	30-Apr-14	16-May-15A	06-Jun-15												
AP01540	Submission of AIP to SO/ ICE together with Reply To Comment (RTC)	0		30-Apr-14		06-Jun-15												
AP01545	Reply to IPs Comments in RTC	0		30-Apr-14		06-Jun-15												
AP01550	ICE Approval & Issue of Design Check Cert.	18	02-May-14	23-May-14	08-Jun-15	29-Jun-15												
AP01555	Check Cert to SO	0		23-May-14		29-Jun-15												
AP01560	No Objection or Further Minor Comments from IPs Received	0		23-May-14		29-Jun-15												
AP01565	SO Review (35 Days)	35	02-May-14	05-Jun-14	07-Jun-15	11-Jul-15												
AP01570	SO Approval with Condition Received	0		05-Jun-14		11-Jul-15												
Construction																		
Zone E																		
A6416450	Zone E - Jet grouting for Break-in Plug	60	04-Nov-14	15-Jan-15	03-Sep-14A	09-Mar-15A												
Zone C1																		
NRC1202130	Zone C1 - B/C Slurry Substitution for CP52	26	27-Aug-14	26-Sep-14	02-Mar-15A	02-Mar-15A												
Zone B																		
A6415895	Zone B - Unreinforced Separation D-wall	13	27-Aug-14	11-Sep-14	11-Feb-15A	02-Apr-15A												
A6415900	Zone B - Slurry Wall for TBM Break-out Plug	34	02-Dec-14	13-Jan-15	23-Mar-15A	23-Mar-15A												
A6415910	Zone B - Slurry Wall - Toe Grouting	24	14-Jan-15	10-Feb-15	23-Mar-15A	23-Mar-15A												
A6415920	Zone B - Ground Treatment for TBM Break-out Plug	58	11-Feb-15	30-Apr-15	18-Mar-15A	11-Apr-15A												
Ground Treatment																		
A6417430	Zone A - B/C Slurry Substitution for CP49	30	22-Oct-14	25-Nov-14	26-May-15	30-Jun-15												
A6417440	Zone A - Drilling for Rock Fissure Grouting for CP48	65	11-Nov-14	28-Jan-15	26-May-15	11-Aug-15												
A6417450	Zone A - Rock Fissure Grouting for CP48	90	25-Nov-14	19-Mar-15	09-Jun-15	23-Sep-15												
A6417460	Zone A - Jet Grouting for CP48	72	29-Jan-15	05-May-15	12-Aug-15	06-Nov-15												
North Approach TBM Tunnelling & Cross Passage																		
Major Procurement																		
TBM at Northern Landfall																		
PO103320	S882 - 13.6m dia - TBM - Delivery	17	17-Jan-15	02-Feb-15	15-Feb-15A	01-Mar-15A												
PO103330	S882 - 13.6m dia - TBM - Arrival at site	0		02-Feb-15		01-Mar-15A												
Precast Segment																		
Precast Segment ID15.60 - Production for NB North TBM Tunnel																		
A6417970	ID15.60 TBM Segment Ring Fabrication - 2 rings per day	148	30-Sep-14	25-Apr-15	25-Sep-14A	02-Jul-15												
Hyperbaric & Saturation																		
A6415160	Hyperbaric Equipment - Place Order, Fabrication & on sitesetup	244	04-Jul-14	04-May-15	21-Jun-14A	23-Jun-15												
A6415170	Hyperbaric Equipment - Delivery to Site for final commissioning	0		04-May-15		23-Jun-15												
Design Submission																		
(D8) IFA Thrust Frame for TBM Launching																		
DD69210	Designer to Reply RTC + Update Submission	21	20-Jun-14	15-Jul-14	15-Jan-15A	06-Mar-15A												
DD69220	Submit Updated IFA to SO/ ICE/ IPs	0		16-Jul-14		06-Mar-15A												
DD69230	ICE Approval & Issue Check Cert	12	16-Jul-14	29-Jul-14	06-Mar-15A	20-Mar-15A												
DD69240	IPs Review	28	16-Jul-14	12-Aug-14	06-Mar-15A	26-Mar-15A												
DD69250	IPs No Objection Received	0		12-Aug-14		26-Mar-15A												

- Planned Bar
- Planned Bar - Critical
- ◆ Planned Milestone
- Progress bar
- ◆ Progress Milestone



Date	Revision	Checked	Approved
21-Feb-14	TMCLKDBJGJEN/PRG#8505	SPa	WYu
28-Aug-14	TMCLKDBJGJEN/PRG#8505 Rev.C	SPa	WYu

Activity ID	Activity Name	Orig Dur	Planned Start	Planned Finish	Current Start	Current Finish	2015												
							Feb	Mar	Apr	May	Jun	Jul	Aug	Sep	Oct				
DD69260	SO's Review	35	16-Jul-14	19-Aug-14	06-Mar-15A	26-Mar-15A													
DD69270	SO Approval with Condition R received	0		19-Aug-14		26-Mar-15A													
(G2) DDA for TBM Tunnel Lining Structural Design - North Approach																			
DD01055	Northern TBM Segment Ring Manufacturing	173	01-Aug-14	04-Mar-15	25-Aug-14A	23-Jun-15													
DD01065	Northern TBM Tunnel Break-in	0	06-Mar-15		23-Jun-15*														
(G2) DDA for TBM Tunnel Lining Settlement Analysis & Confinement Pressure - North Approach																			
DD00825	IPs/ SO's Advance Comments/ ICE Comments	28	22-Jun-14	19-Jul-14	10-Jan-15A	21-Mar-15A													
DD00830	Comments Received	0		19-Jul-14		21-Mar-15A													
DD00835	Designer to Reply RTC + Update Submission	21	21-Jul-14	13-Aug-14	21-Mar-15A	25-Mar-15A													
DD00840	Submit Updated DDA to SO/ ICE/ IPs	0	14-Aug-14		25-Mar-15A														
DD00845	ICE Approval & Issue Check Cert	12	14-Aug-14	27-Aug-14	11-Mar-15A	11-Mar-15A													
DD00850	Submit ICE Check Cert to SO	6	28-Aug-14	03-Sep-14	11-Mar-15A	11-Mar-15A													
DD00855	IPs Review	28	14-Aug-14	10-Sep-14	25-Mar-15A	23-Apr-15A													
DD00860	IP's No Objection Received	0		10-Sep-14		23-Apr-15A													
DD00880	SO's Review	35	14-Aug-14	17-Sep-14	25-Mar-15A	23-Apr-15A													
DD00885	SO Approval with Condition R received	0		17-Sep-14		23-Apr-15A													
(G5) DDA for Cross Passage - Permanent works - incl. Detailed Geotechnical Assessment - North																			
DD67478	Designer to Reply RTC + Update Submission	21	12-Dec-14	08-Jan-15	07-Feb-15A	11-Mar-15A													
DD67488	Submit Updated DDA to SO/ ICE/ IPs	0	09-Jan-15		11-Mar-15A														
DD67498	ICE Approval & Issue Check Cert	12	09-Jan-15	22-Jan-15	11-Mar-15A	14-Mar-15A													
DD67508	Submit ICE Check Cert to SO	6	23-Jan-15	29-Jan-15	14-Mar-15A	16-Mar-15A													
DD67518	IPs Review	28	09-Jan-15	05-Feb-15	11-Mar-15A	28-May-15													
DD67528	IP's No Objection Received	0		05-Feb-15		28-May-15													
DD67609*	SO's Review	35	09-Jan-15	12-Feb-15	11-Mar-15A	31-May-15													
DD67610	SO Approval with Condition R received	0		12-Feb-15		01-Jun-15													
Method Statement Submission																			
Method Statement of Construction Methodology of Cross Passage Excavation																			
MS1420	SO Reviews & Comments	28	01-Feb-15	28-Feb-15	11-Oct-15	07-Nov-15													
MS1430	Re-submission	18	02-Mar-15	21-Mar-15	09-Nov-15	28-Nov-15													
MS1440	SO's Review	28	22-Mar-15	18-Apr-15	29-Nov-15	26-Dec-15													
MS1450	SO's Approval	0		18-Apr-15		26-Dec-15													
Construction																			
Northern Landfall Surface Setup for TBM operation																			
A6415937	Slurry Treatment Plant Foundation	25	15-Oct-14	12-Nov-14	20-Oct-14A	27-Apr-15A													
A6415940	Slurry Treatment Plant 1 Setup at Northern Landfall	64	13-Nov-14	29-Jan-15	20-Nov-14A	24-Mar-15A													
A6415950	Slurry Treatment Plant 1 Commissioning	24	30-Jan-15	05-Mar-15	25-Mar-15A	25-Apr-15A													
A6415955	Slurry Treatment Plant 2 Setup at Northern Landfall	54	30-Jan-15	14-Apr-15	09-Feb-15A	30-Apr-15A													
A6415957	Slurry Treatment Plant 2 Commissioning	24	15-Apr-15	13-May-15	02-May-15A	27-May-15													
A6415970	Gantry Setup at North Ventilation Shaft	48	20-Jul-15	12-Sep-15	31-Oct-15	28-Dec-15													
A6416000	Hyperbaric Equipment Installation, Commissioning & Operation	59	05-May-15	15-Jul-15	24-Jun-15	01-Sep-15													
S880 TBM Assembly at North TBM Launching Shaft																			
NSH1940	S880 - TBM Launching - Main Drive Connection	2	21-Dec-14	22-Dec-14	13-Feb-15A	10-Mar-15A													
NSH1950	S880 - TBM Launching - Main Drive Shifting	2	23-Dec-14	24-Dec-14	03-Mar-15A	04-Mar-15A													
NSH1960	S880 - TBM Launching - Main Drive Thrust Frame Installation	14	25-Dec-14	07-Jan-15	30-Mar-15A	01-Apr-15A													
NSH1965	S880 - TBM Launching - Gantry 2 Assembly	3	25-Dec-14	27-Dec-14	06-Mar-15A	07-Mar-15A													
NSH1970	S880 - TBM Launching - Gantry 1 Assembly	3	28-Dec-14	30-Dec-14	07-Mar-15A	08-Mar-15A													
NSH1980	S880 - TBM Launching - Gantry 1 & Main Drive connection	3	08-Jan-15	10-Jan-15	11-Mar-15A	12-Mar-15A													
NSH1990	S880 - TBM Launching - Gantry 2 & Gantry 1 connection	3	11-Jan-15	13-Jan-15	10-Mar-15A	11-Mar-15A													
NSH2000	S880 - TBM Launching - Gantry 3 assembly	3	09-Jan-15	11-Jan-15	11-Mar-15A	13-Mar-15A													
NSH2010	S880 - TBM Launching - Gantry 4 assembly	3	12-Jan-15	14-Jan-15	14-Mar-15A	16-Mar-15A													
NSH2020	S880 - TBM Launching - Gantry 3 & Gantry 2 connection	3	14-Jan-15	16-Jan-15	17-Mar-15A	20-Mar-15A													
NSH2030	S880 - TBM Launching - Gantry 4 & Gantry 3 connection	3	17-Jan-15	19-Jan-15	20-Mar-15A	22-Mar-15A													
NSH2040	S880 - TBM Launching - Testing & Commissioning	24	20-Jan-15	12-Feb-15	23-Mar-15A	11-Apr-15A													
NSH2050	S880 - TBM Launching - Segment Ring Installation for Break-in	8	13-Feb-15	23-Feb-15	11-Apr-15A	18-Apr-15A													
NSH2060	S880 - TBM Launching - Final commissioning & Break-in	10	24-Feb-15	05-Mar-15	19-Apr-15A	25-Apr-15A													
S882 TBM Assembly at North TBM Launching Shaft																			
NSH206010	S882 - TBM Launching - Front Shield Assembly	3	13-Feb-15	15-Feb-15	08-Mar-15A	20-Mar-15A													
NSH206020	S882 - TBM Launching - Cutterhead Assembly	3	16-Feb-15	18-Feb-15	22-Mar-15A	22-Mar-15A													
NSH206030	S882 - TBM Launching - Erector Assembly	3	22-Feb-15	24-Feb-15	24-Mar-15A	26-Mar-15A													
NSH206040	S882 - TBM Launching - Tail Skin Assembly	3	25-Feb-15	27-Feb-15	28-Mar-15A	31-Mar-15A													
NSH2130	S882 - TBM Launching - Main Drive Connection	2	28-Feb-15	01-Mar-15	01-Apr-15A	21-Apr-15A													
NSH2140	S882 - TBM Launching - Main Drive Shifting	2	02-Mar-15	03-Mar-15	17-Apr-15A	22-Apr-15A													
NSH2150	S882 - TBM Launching - Main Drive Thrust Frame Installation	14	04-Mar-15	17-Mar-15	06-May-15A	16-May-15A													
NSH215010	S882 - TBM Launching - Gantry 2 Assembly	3	04-Mar-15	06-Mar-15	23-Apr-15A	24-Apr-15A													
NSH215020	S882 - TBM Launching - Gantry 1 Assembly	3	07-Mar-15	09-Mar-15	27-Apr-15A	28-Apr-15A													
NSH2160	S882 - TBM Launching - Gantry 1 & Main Drive connection	3	18-Mar-15	20-Mar-15	28-Apr-15A	04-May-15A													
NSH2170	S882 - TBM Launching - Gantry 2 & Gantry 1 connection	3	21-Mar-15	23-Mar-15	05-May-15A	08-May-15A													
NSH2180	S882 - TBM Launching - Gantry 3 assembly	3	10-Mar-15	12-Mar-15	28-May-15	30-May-15													
NSH2190	S882 - TBM Launching - Gantry 4 assembly	3	13-Mar-15	15-Mar-15	31-May-15	02-Jun-15													
NSH2200	S882 - TBM Launching - Gantry 3 & Gantry 2 connection	3	24-Mar-15	26-Mar-15	28-May-15	30-May-15													
NSH2210	S882 - TBM Launching - Gantry 4 & Gantry 3 connection	3	27-Mar-15	29-Mar-15	03-Jun-15	05-Jun-15													
NSH2220	S882 - TBM Launching - Testing & Commissioning	24	30-Mar-15	25-Apr-15	07-Jul-15A	26-Jun-15													
NSH2230	S882 - TBM Launching - Segment Ring Installation for Break-in	8	26-Apr-15	03-May-15	27-Jun-15	04-Jul-15													
NSH2240	S882 - TBM Launching - Final commissioning & Break-in	10	04-May-15	13-May-15	05-Jul-15	14-Jul-15													

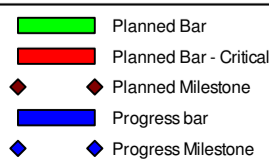
- █ Planned Bar
- █ Planned Bar - Critical
- ◆ Planned Milestone
- █ Progress bar
- ◆ Progress Milestone

TMCLK - Northern Connection Sub-Sea Tunnel Section
 Detailed Works Programme (Rev. C) - Three months rolling programme
 Progress as of 25-May-15



Date	Revision	Checked	Approved
21-Feb-14	TMCLKDBJGEN/PRG#8505	SPa	WYu
28-Aug-14	TMCLKDBJGEN/PRG#8505 Rev.C	SPa	WYu

Activity ID	Activity Name	Orig Dur	Planned Start	Planned Finish	Current Start	Current Finish	2015									
							Feb	Mar	Apr	May	Jun	Jul	Aug	Sep	Oct	
TBM10010	NB - North TBM Tunnel - CDG+Boulder with Trimix (Ch7175 to 7155 - 20m)	14	06-Mar-15	19-Mar-15	26-Apr-15A	16-Jul-15A	NB - North TBM Tunnel - CDG+Boulder with Trimix (Ch7175 to 7155 - 20m)									
TBM10020	NB - North TBM Tunnel - CDG with Trimix (Ch7155 to 7105 - 50m)	14	20-Mar-15	02-Apr-15	17-May-15A	24-Aug-15	NB - North TBM Tunnel - CDG with Trimix (Ch7155 to 7105 - 50m)									
TBM10030	NB - North TBM Tunnel - CDG with Trimix (Ch7105 to 7000 - 105m)	24	05-Apr-15	29-Apr-15	24-Aug-15	17-Sep-15	NB - North TBM Tunnel - CDG with Trimix (Ch7105 to 7000 - 105m)									
TBM10040	NB - North TBM Tunnel - CDG with Trimix (Ch7000 to 6870 - 130m)	18	30-Apr-15	18-May-15	17-Sep-15	05-Oct-15	NB - North TBM Tunnel - CDG with Trimix (Ch7000 to 6870 - 130m)									
TBM10050	NB - North TBM Tunnel - CDG+Boulder with Saturation (Ch6870 to 6840 - 30m)	20	19-May-15	07-Jun-15	05-Oct-15	25-Oct-15	NB - North TBM Tunnel - CDG+Boulder with Saturation (Ch6870 to 6840 - 30m)									
TBM10060	NB - North TBM Tunnel - Transition with Saturation (Ch6840 to 6708 - 132m)	75	08-Jun-15	24-Aug-15	25-Oct-15	08-Jan-16	NB - North TBM Tunnel - Transition with Saturation (Ch6840 to 6708 - 132m)									
TBM11020	NB - North TBM Tunnel - Thrust Frame Removal	12	19-May-15	02-Jun-15	05-Oct-15	19-Oct-15	NB - North TBM Tunnel - Thrust Frame Removal									
North Approach TBM Tunnel - SB ID12.40m - S882																
TBM10490	SB - North TBM Tunnel - CDG+Boulder with Trimix (Ch7196 to 7176 - 20m)	10	14-May-15	24-May-15	17-Aug-15	27-Aug-15	SB - North TBM Tunnel - CDG+Boulder with Trimix (Ch7196 to 7176 - 20m)									
TBM10500	SB - North TBM Tunnel - CDG with Trimix (Ch7176 to 7126 - 50m)	10	25-May-15	03-Jun-15	27-Aug-15	06-Sep-15	SB - North TBM Tunnel - CDG with Trimix (Ch7176 to 7126 - 50m)									
TBM10510	SB - North TBM Tunnel - CDG with Trimix (Ch7126 to 7021 - 105m)	17	04-Jun-15	21-Jun-15	06-Sep-15	23-Sep-15	SB - North TBM Tunnel - CDG with Trimix (Ch7126 to 7021 - 105m)									
TBM10520	SB - North TBM Tunnel - CDG with Trimix (Ch7021 to 6891 - 130m)	12	22-Jun-15	03-Jul-15	23-Sep-15	05-Oct-15	SB - North TBM Tunnel - CDG with Trimix (Ch7021 to 6891 - 130m)									
TBM10530	SB - North TBM Tunnel - CDG+Boulder with Saturation (Ch6891 to 6861 - 30m)	9	04-Jul-15	12-Jul-15	05-Oct-15	14-Oct-15	SB - North TBM Tunnel - CDG+Boulder with Saturation (Ch6891 to 6861 - 30m)									
TBM10540	SB - North TBM Tunnel - Transition with Saturation (Ch6861 to 6729 - 132m)	63	13-Jul-15	15-Sep-15	14-Oct-15	16-Dec-15	SB - North TBM Tunnel - Transition with Saturation (Ch6861 to 6729 - 132m)									
TBM11030	SB - North TBM Tunnel - Thrust Frame Removal	12	04-Jul-15	17-Jul-15	05-Oct-15	19-Oct-15	SB - North TBM Tunnel - Thrust Frame Removal									
North Approach Tunnel Internal Structure - NB																
ISIG1000	NB - North TBM Tunnel - Invert Backfilling (Ch7175 to 6870 - 305m) Stage 1	87	03-Jun-15	31-Aug-15	19-Oct-15	14-Jan-16	NB - North TBM Tunnel - Invert Backfilling (Ch7175 to 6870 - 305m) Stage 1									
ISIG1020	NB - North TBM Tunnel - ISIG Assembly	14	03-Jun-15	17-Jun-15	19-Oct-15	02-Nov-15	NB - North TBM Tunnel - ISIG Assembly									
ISIG1030	NB - North TBM Tunnel - Invert Precast Gallery Installation (Ch7175 to 6870 - 305m)	87	18-Jun-15	14-Sep-15	02-Nov-15	28-Jan-16	NB - North TBM Tunnel - Invert Precast Gallery Installation (Ch7175 to 6870 - 305m)									
ISIG1050	NB - North TBM Tunnel - Invert Backfilling (Ch7175 to 7125 - 50m) Stage 2	15	30-Jun-15	14-Jul-15	14-Nov-15	29-Nov-15	NB - North TBM Tunnel - Invert Backfilling (Ch7175 to 7125 - 50m) Stage 2									
ISIG1060	NB - North TBM Tunnel - Invert Backfilling (Ch7125 to 7075 - 50m) Stage 2	15	16-Jul-15	30-Jul-15	29-Nov-15	14-Dec-15	NB - North TBM Tunnel - Invert Backfilling (Ch7125 to 7075 - 50m) Stage 2									
ISIG1070	NB - North TBM Tunnel - Invert Backfilling (Ch7075 to 7025 - 50m) Stage 2	15	31-Jul-15	14-Aug-15	14-Dec-15	29-Dec-15	NB - North TBM Tunnel - Invert Backfilling (Ch7075 to 7025 - 50m) Stage 2									
ISIG1080	NB - North TBM Tunnel - Invert Backfilling (Ch7025 to 6975 - 50m) Stage 2	14	16-Aug-15	29-Aug-15	29-Dec-15	12-Jan-16	NB - North TBM Tunnel - Invert Backfilling (Ch7025 to 6975 - 50m) Stage 2									
North Approach Tunnel Internal Structure - SB																
ISIG1120	SB - North TBM Tunnel - Invert Backfilling (Ch7175 to 7125 - 50m)	13	18-Jul-15	30-Jul-15	19-Oct-15	01-Nov-15	SB - North TBM Tunnel - Invert Backfilling (Ch7175 to 7125 - 50m)									
ISIG1130	SB - North TBM Tunnel - Invert Backfilling (Ch7125 to 7075 - 50m)	13	31-Jul-15	12-Aug-15	01-Nov-15	14-Nov-15	SB - North TBM Tunnel - Invert Backfilling (Ch7125 to 7075 - 50m)									
ISIG1140	SB - North TBM Tunnel - Invert Backfilling (Ch7075 to 7025 - 50m)	13	13-Aug-15	26-Aug-15	14-Nov-15	27-Nov-15	SB - North TBM Tunnel - Invert Backfilling (Ch7075 to 7025 - 50m)									
North Ventilation Building																
Design Submission																
(A10) ACABAS Submissions																
GS01650	ACABAS Approval	28	16-Mar-14	12-Apr-14	31-Jan-15A	27-Jun-15										
(A11) Submissions to Design Advisory Panel of ArchSD																
GS01730	Prepare Re-submission	18	19-May-14	09-Jun-14	22-Jul-14A	27-May-15										
GS01740	ArchSD's comment	30	10-Jun-14	09-Jul-14	28-May-15	26-Jun-15										
(I1) DDA for North Vent. Bldgs. GBP & Arch. Submission																
DD01225	IPs/ SO's Advance Comments/ ICE Comments	28	29-Jun-14	26-Jul-14	10-Dec-14A	02-May-15A										
DD01230	Comments Received	0		26-Jul-14		02-May-15A										
DD01235	Designer to Reply RTc + Update Submission	21	28-Jul-14	20-Aug-14	02-May-15A	26-Jun-15										
DD01240	Submit Updated DDA to SO/ ICE/ IPs	0	21-Aug-14		27-Jun-15											
DD01245	ICE Approval & Issue Check Cert	12	21-Aug-14	03-Sep-14	27-Jun-15	11-Jul-15										
DD01250	Submit ICE Check Cert to SO	6	04-Sep-14	11-Sep-14	13-Jul-15	18-Jul-15										
DD01255	IPs Review	28	21-Aug-14	17-Sep-14	27-Jun-15	24-Jul-15										
DD01260	IP's No Objection Received	0		17-Sep-14		24-Jul-15										
DD01265	SO's Review	35	21-Aug-14	24-Sep-14	27-Jun-15	31-Jul-15										
DD01270	SO Approval with Condition Received	0		24-Sep-14		31-Jul-15										
(I1) DDA for North & South Vent. Bldg. ABWF works																
DD67638	Preparation of DDANth & South ABWF	18	25-Sep-14	17-Oct-14	01-Aug-15	21-Aug-15	ABWF									
DD67648	Review & Comment by JV	24	18-Oct-14	14-Nov-14	22-Aug-15	18-Sep-15	JV									
DD67708	Submit ICE Check Cert to SO	6	16-Feb-15	28-Feb-15	22-Dec-15	30-Dec-15	Submit ICE Check Cert to SO									
DD67738	SO's Review	35	26-Jan-15	01-Mar-15	01-Dec-15	04-Jan-16	SO's Review									
DD67748	SO Approval with Condition Received	0		02-Mar-15		04-Jan-16	SO Approval with Condition Received									
(I2) DDA for North Vent. Bldgs. Foundation Design																
DD01355	IPs Review	28	03-Dec-14	30-Dec-14	30-Jan-15A	26-May-15	Review									
DD01360	IP's No Objection Received	0		30-Dec-14		26-May-15	Objection Received									
DD01380	SO's Review	35	03-Dec-14	06-Jan-15	30-Jan-15A	30-May-15	Review									
DD01385	SO Approval with Condition Received	0		06-Jan-15		30-May-15	Approval with Condition Received									
(I2) DDA for North Vent. Bldgs. Structural Design incl. Vent. Connections																
DD68008	Preparation of DDANth VB Structural Design incl. Vent. conn	18	05-Sep-14	26-Sep-14	24-Jan-15A	27-May-15	Structural Design incl. Vent. conn									
DD68018	Review & Comment by JV	18	27-Sep-14	20-Oct-14	28-May-15	17-Jun-15	JV									
DD68020	Designer prepare DDA	10	21-Oct-14	31-Oct-14	18-Jun-15	30-Jun-15										
DD68028	Formal Submission of DDA to ICE/ IPs	0		31-Oct-14		30-Jun-15	ICE/ IPs									
DD68030	Advanced Submission to SO	0		31-Oct-14		30-Jun-15										
DD68038	IPs/ SO's Advance Comments/ ICE Comments	28	01-Nov-14	28-Nov-14	01-Jul-15	28-Jul-15	Comments/ ICE Comments									
DD68040	Comments Received	0		28-Nov-14		28-Jul-15	Received									
DD68048	Designer to Reply RTc + Update Submission	21	29-Nov-14	23-Dec-14	29-Jul-15	21-Aug-15	to Reply RTc + Update Submission									
DD68058	Submit Updated DDA to SO/ ICE/ IPs	0	24-Dec-14		22-Aug-15		Updated DDA to SO/ ICE/ IPs									
DD68068	ICE Approval & Issue Check Cert	12	24-Dec-14	09-Jan-15	22-Aug-15	04-Sep-15	Approval & Issue Check Cert									
DD68088	IPs Review	28	24-Dec-14	20-Jan-15	22-Aug-15	18-Sep-15	IPs Review									
DD68210	SO's Review	35	24-Dec-14	27-Jan-15	22-Aug-15	25-Sep-15	SO's Review									
(I3) DDA for North & South Vent. Bldgs. Service and E&M Provision																
DD01600	Preparation of DDANth VB Service and E&M Provision	18	12-Sep-14	04-Oct-14	26-May-15	15-Jun-15	E&M Provision									
DD01605	Review & Comment by JV	24	06-Oct-14	01-Nov-14	16-Jun-15	15-Jul-15	JV									
DD01610	Designer prepare DDA	15	03-Nov-14	19-Nov-14	16-Jul-15	01-Aug-15										
DD01615	Formal Submission of DDA to ICE/ IPs	0		19-Nov-14		01-Aug-15	DDA to ICE/ IPs									
DD01620	Advanced Submission to SO	0		19-Nov-14		01-Aug-15	to SO									



Date	Revision	Checked	Approved
21-Feb-14	TMCLKDBJGENPRGM8505	SPa	WYu
28-Aug-14	TMCLKDBJGENPRGM8505 Rev.C	SPa	WYu

Activity ID	Activity Name	Orig Dur	Planned Start	Planned Finish	Current Start	Current Finish	2015											
							Feb	Mar	Apr	May	Jun	Jul	Aug	Sep	Oct			
DD01625	IPs/ SO's Advance Comments/ ICE Comments	28	20-Nov-14	17-Dec-14	02-Aug-15	29-Aug-15	Advance Comments/ ICE Comments											
(J1) DDA Temp.works for Construction of Sth.Vent.Bldg.																		
DD04380	Preparation of DDANth VB & Trench ELS	18	19-Sep-14	11-Oct-14	24-Apr-15A	08-May-15A	ELS											
DD04390	Review & Comment by JV	18	13-Oct-14	01-Nov-14	08-May-15A	29-May-15												
DD04400	Designer prepare DDA	10	03-Nov-14	13-Nov-14	30-May-15	10-Jun-15												
DD04410	Formal Submission of DDA to ICE/ IPs	0		13-Nov-14		10-Jun-15	DDA to ICE/ IPs											
DD04420	Advanced Submission to SO	0		13-Nov-14		10-Jun-15	SO											
DD04430	IPs/ SO's Advance Comments/ ICE Comments	28	14-Nov-14	11-Dec-14	11-Jun-15	08-Jul-15	Advance Comments/ ICE Comments											
DD04440	Comments Received	0		11-Dec-14		08-Jul-15	Comments Received											
DD04450	Designer to Reply RTC + Update Submission	21	12-Dec-14	08-Jan-15	09-Jul-15	01-Aug-15	Designer to Reply RTC + Update Submission											
DD04460	Submit Updated DDA to SO/ ICE/ IPs	0	09-Jan-15		03-Aug-15		Submit Updated DDA to SO/ ICE/ IPs											
DD04470	ICE Approval & Issue Check Cert	12	09-Jan-15	22-Jan-15	03-Aug-15	15-Aug-15	ICE Approval & Issue Check Cert											
DD04480	Submit ICE Check Cert to SO	6	23-Jan-15	29-Jan-15	17-Aug-15	22-Aug-15	Submit ICE Check Cert to SO											
DD04490	IPs Review	28	09-Jan-15	05-Feb-15	03-Aug-15	30-Aug-15	IPs Review											
DD04540	SO's Review	35	09-Jan-15	12-Feb-15	03-Aug-15	06-Sep-15	SO's Review											
(J2) Tower Crane Foundation for Ventilation Building																		
DD70480	Preparation of DDA Tower Crane Foundation for Vent Bldg Construction	18	01-Jun-15	22-Jun-15	17-Sep-15	09-Oct-15	Preparation of DDA Tower Crane Foundation											
DD70490	Review & Comment by JV	18	23-Jun-15	14-Jul-15	10-Oct-15	31-Oct-15	Review & Comment by JV											
DD70500	Designer prepare DDA	10	15-Jul-15	25-Jul-15	02-Nov-15	12-Nov-15	Designer prepare DDA											
DD70510	Formal Submission of DDA to ICE/ IPs	0		25-Jul-15		12-Nov-15	Formal Submission of DDA to ICE/ IPs											
DD70520	Advanced Submission to SO	0		25-Jul-15		12-Nov-15	Advanced Submission to SO											
DD70530	IPs/ SO's Advance Comments/ ICE Comments	28	26-Jul-15	22-Aug-15	13-Nov-15	10-Dec-15	IPs/ SO's Advance Comments/ ICE Comments											
DD70540	Comments Received	0		22-Aug-15		10-Dec-15	Comments Received											
DD70550	Designer to Reply RTC + Update Submission	21	24-Aug-15	16-Sep-15	11-Dec-15	07-Jan-16	Designer to Reply RTC + Update Submission											
(C3) DDA for North Vent Shaft & Duct Permanent Structure																		
DD67278	Review & Comment by JV	18	28-Aug-14	18-Sep-14	16-Jan-15A	27-May-15												
DD67280	Designer prepare DDA	10	19-Sep-14	30-Sep-14	28-May-15	08-Jun-15												
DD67288	Formal Submission of DDA to ICE/ IPs	0		30-Sep-14		08-Jun-15	Formal Submission of DDA to ICE/ IPs											
DD67290	Advanced Submission to SO	0		30-Sep-14		08-Jun-15	Advanced Submission to SO											
DD67298	IPs/ SO's Advance Comments/ ICE Comments	28	01-Oct-14	28-Oct-14	09-Jun-15	06-Jul-15	ICE Comments											
DD67300	Comments Received	0		28-Oct-14		06-Jul-15	Comments Received											
DD67308	Designer to Reply RTC + Update Submission	21	29-Oct-14	21-Nov-14	07-Jul-15	30-Jul-15	Designer to Reply RTC + Update Submission											
DD67318	Submit Updated DDA to SO/ ICE/ IPs	0	22-Nov-14		31-Jul-15		Submit Updated DDA to SO/ ICE/ IPs											
DD67328	ICE Approval & Issue Check Cert	12	22-Nov-14	05-Dec-14	31-Jul-15	13-Aug-15	ICE Approval & Issue Check Cert											
DD67338	Submit ICE Check Cert to SO	6	06-Dec-14	12-Dec-14	14-Aug-15	20-Aug-15	Submit ICE Check Cert to SO											
DD67348	IPs Review	28	22-Nov-14	19-Dec-14	31-Jul-15	27-Aug-15	IPs Review											
DD67368	SO's Review	35	22-Nov-14	26-Dec-14	31-Jul-15	03-Sep-15	SO's Review											
North Ventilation Shaft - Tympanum Structure																		
DD71905	Preparation IFA North Ventilation Shaft - Tympanum Structure	0			26-Jan-15A	23-Mar-15A	Preparation IFA North Ventilation Shaft - Tympanum Structure											
DD71915	Review & Comment by JV	0			23-Mar-15A	20-Apr-15A	Review & Comment by JV											
DD71925	Designer prepare IFA	0			20-Apr-15A	24-Apr-15A	Designer prepare IFA											
DD71935	Formal Submission of IFA to ICE/ IPs	0				24-Apr-15A	Formal Submission of IFA to ICE/ IPs											
DD71945	Advanced Submission to SO	0				24-Apr-15A	Advanced Submission to SO											
DD71955	IPs/SO's Advance comments / ICE comments	0			24-Apr-15A	15-May-15A	IPs/SO's Advance comments / ICE comments											
DD71965	Comments Received	0				15-May-15A	Comments Received											
DD71975	Designer to Reply RTC + Update Submission	0			16-May-15A	27-May-15	Designer to Reply RTC + Update Submission											
DD71985	Submit Updated IFA to SO/ ICE/ IPs	0			28-May-15		Submit Updated IFA to SO/ ICE/ IPs											
DD71995	ICE Approval & Issue Check Cert	0			28-May-15	08-Jun-15	ICE Approval & Issue Check Cert											
DD72005	Submit ICE Check Cert to SO	0			09-Jun-15	15-Jun-15	Submit ICE Check Cert to SO											
DD72015	IPs Review	0			28-May-15	17-Jun-15	IPs Review											
DD72025	IP's No Objection Received	0				17-Jun-15	IP's No Objection Received											
DD72035	SO's Review	0			28-May-15	24-Jun-15	SO's Review											
DD72045	SO Approval with Condition Received	0				24-Jun-15	SO Approval with Condition Received											
(C3) DDA North Shaft Tunnel Structure & Vent Ducts																		
DD72055	Preparation of DDANorth Vent Shaft Tunnel Structure & Vent Ducts	0			19-Jan-15A	08-Apr-15A	Preparation of DDANorth Vent Shaft Tunnel Structure & Vent Ducts											
DD72065	Review & Comment by JV	0			08-Apr-15A	27-May-15	Review & Comment by JV											
DD72075	Designer prepare DDA	0			28-May-15	05-Jun-15	Designer prepare DDA											
DD72085	Formal Submission of DDA to ICE/ IPs	0				05-Jun-15	Formal Submission of DDA to ICE/ IPs											
DD72095	Advanced Submission to SO	0				05-Jun-15	Advanced Submission to SO											
DD72105	IPs/SO's Advance comments / ICE comments	0			06-Jun-15	24-Jun-15	IPs/SO's Advance comments / ICE comments											
DD72115	Comments Received	0				24-Jun-15	Comments Received											
DD72125	Designer to Reply RTC + Update Submission	0			25-Jun-15	11-Jul-15	Designer to Reply RTC + Update Submission											
DD72135	Submit Updated DDA to SO/ ICE/ IPs	0			13-Jul-15		Submit Updated DDA to SO/ ICE/ IPs											
DD72145	ICE Approval & Issue Check Cert	0			13-Jul-15	25-Jul-15	ICE Approval & Issue Check Cert											
DD72155	Submit ICE Check Cert to SO	0			27-Jul-15	01-Aug-15	Submit ICE Check Cert to SO											
DD72165	IPs Review	0			13-Jul-15	09-Aug-15	IPs Review											
DD72175	IP's No Objection Received	0				09-Aug-15	IP's No Objection Received											
DD72185	SO's Review	0			15-Jul-15	11-Aug-15	SO's Review											
DD72195	SO Approval with Condition Received	0				11-Aug-15	SO Approval with Condition Received											
(D6) IFA Misc.Temp.Support for Excavation >2m depth																		
DD05230	IPs/ SO's Advance Comments/ ICE Comments	28	08-Feb-15	07-Mar-15	05-Dec-14A	05-Dec-14A	IPs/ SO's Advance Comments/ ICE Comments											
DD05240	Comments Received	0		07-Mar-15		05-Dec-14A	Comments Received											
DD05250	Designer to Reply RTC + Update Submission	21	09-Mar-15	01-Apr-15	05-Dec-14A	05-Dec-14A	Designer to Reply RTC + Update Submission											
DD05260	Submit Updated IFA to SO/ ICE/ IPs	0	02-Apr-15		05-Dec-14A		Submit Updated IFA to SO/ ICE/ IPs											

■ Planned Bar
■ Planned Bar - Critical
◆ Planned Milestone
■ Progress bar
◆ Progress Milestone



Date	Revision	Checked	Approved
21-Feb-14	TMCLKDBJGJEN/PRG#8505	SPa	WYu
28-Aug-14	TMCLKDBJGJEN/PRG#8505 Rev.C	SPa	WYu

Activity ID	Activity Name	Orig Dur	Planned Start	Planned Finish	Current Start	Current Finish	2015																
							Feb	Mar	Apr	May	Jun	Jul	Aug	Sep	Oct								
DD05270	ICE Approval & Issue Check Cert	12	02-Apr-15	20-Apr-15	05-Dec-14A	05-Dec-14A																	
DD05280	IPs Review	28	02-Apr-15	29-Apr-15	05-Dec-14A	05-Dec-14A																	
DD05290	IPs No Objection Received	0		29-Apr-15		05-Dec-14A																	
DD05300	SO's Review	35	02-Apr-15	06-May-15	05-Dec-14A	05-Dec-14A																	
DD05310	SO Approval with Condition R received	0		06-May-15		05-Dec-14A																	
(D9) AIP Temporary support and dewatering measures for Vent Duct ELS design for Northern Landfall																							
DD69330	IPs/ SO's Advance Comments/ ICE Comments	28	04-Feb-15	03-Mar-15	22-Aug-14A	22-Aug-14A																	
DD69340	Comments Received	0		03-Mar-15		22-Aug-14A																	
DD69350	Designer to Reply RTC + Update Submission	21	04-Mar-15	27-Mar-15	22-Aug-14A	22-Aug-14A																	
DD69360	Submit Updated AIP to SO/ ICE/ IPs	0	28-Mar-15		22-Aug-14A																		
DD69370	ICE Approval & Issue Check Cert	12	28-Mar-15	15-Apr-15	22-Aug-14A	22-Aug-14A																	
DD69380	IPs Review	28	28-Mar-15	24-Apr-15	22-Aug-14A	22-Aug-14A																	
DD69390	IPs No Objection Received	0		24-Apr-15		22-Aug-14A																	
DD69400	SO's Review	35	28-Mar-15	01-May-15	22-Aug-14A	22-Aug-14A																	
DD69410	SO Approval with Condition R received	0		02-May-15		02-May-15A																	
(D9) DDA Temporary support and dewatering measures for Vent Duct ELS design for Northern Landfall																							
DD69420	Prepare DDA Temp Support & Dewatering measures for Vent Duct ELS at Northern Landfall	18	02-May-15	22-May-15	28-Jan-15A	28-Jan-15A																	
DD69430	Review & Comment by JV	18	23-May-15	13-Jun-15	28-Jan-15A	28-Jan-15A																	
DD69440	Designer prepare DDA	10	15-Jun-15	26-Jun-15	28-Jan-15A	28-Jan-15A																	
DD69450	Formal Submission of DDA to ICE/ IPs	0		26-Jun-15		28-Jan-15A																	
DD69460	Advanced Submission to SO	0		26-Jun-15		28-Jan-15A																	
DD69470	IPs/ SO's Advance Comments/ ICE Comments	28	27-Jun-15	24-Jul-15	28-Jan-15A	28-Jan-15A																	
DD69480	Comments Received	0		24-Jul-15		28-Jan-15A																	
DD69490	Designer to Reply RTC + Update Submission	21	25-Jul-15	18-Aug-15	28-Jan-15A	28-Jan-15A																	
DD69500	Submit Updated DDA to SO/ ICE/ IPs	0	19-Aug-15		28-Jan-15A																		
DD69510	ICE Approval & Issue Check Cert	12	19-Aug-15	01-Sep-15	28-Jan-15A	28-Jan-15A																	
DD69520	IPs Review	28	19-Aug-15	15-Sep-15	28-Jan-15A	28-Jan-15A																	
DD69540	SO's Review	35	19-Aug-15	22-Sep-15	28-Jan-15A	28-Jan-15A																	
Construction																							
DDP11100	N - Piling (Socket H-piles)	140	22-May-15	07-Nov-15	12-Jun-15	27-Nov-15																	
DDP11120	Sheet Piling - 212 lin.MS	42	22-May-15	13-Jul-15	07-Sep-15	28-Oct-15																	
North Surface Roadworks, Utility & Drainage works																							
Design Submission																							
(A20) DDA for Traffic Sign & Road Marking																							
DD01725	IPs/ SO's Advance Comments/ ICE Comments	28	19-Oct-14	15-Nov-14	12-Dec-14A	28-Mar-15A																	
DD01730	Comments Received	0		15-Nov-14		28-Mar-15A																	
DD01735	Designer to Reply RTC + Update Submission	21	17-Nov-14	10-Dec-14	29-Mar-15A	10-Apr-15A																	
DD01740	Submit Updated DDA to SO/ ICE/ IPs	0	11-Dec-14		10-Apr-15A																		
DD01745	ICE Approval & Issue Check Cert	12	11-Dec-14	24-Dec-14	12-Dec-14A	02-May-15A																	
DD01750	Submit ICE Check Cert to SO	6	27-Dec-14	03-Jan-15	02-May-15A	07-May-15A																	
DD01755	SO's Review	35	11-Dec-14	14-Jan-15	10-Apr-15A	26-May-15																	
DD01760	SO Approval with Condition R received	0		14-Jan-15		26-May-15																	
(A20) DDA for Street Furniture, Sign Gantry & etc																							
DD72215	Review & Comment by JV	0			07-Jan-15A	06-Mar-15A																	
DD72225	Designer prepare DDA	0			06-Mar-15A	06-Mar-15A																	
DD72235	Formal Submission of DDA to ICE/ IPs	0				06-Mar-15A																	
DD72245	Advanced Submission to SO	0				06-Mar-15A																	
DD72255	IPs/SO's Advance comments / ICE comments	0			06-Mar-15A	02-May-15A																	
DD72265	Comments Received	0				02-May-15A																	
DD72275	Designer to Reply RTC + Update Submission	0			02-May-15A	08-May-15A																	
DD72285	Submit Updated DDA to SO/ ICE/ IPs	0			08-May-15A																		
DD72295	ICE Approval & Issue Check Cert	0			26-May-15	08-Jun-15																	
DD72305	Submit ICE Check Cert to SO	0			09-Jun-15	15-Jun-15																	
DD72315	IPs Review	0			08-May-15A	21-Jun-15																	
DD72325	IPs No Objection Received	0				21-Jun-15																	
DD72335	SO's Review	0			08-May-15A	23-Jun-15																	
DD72345	SO Approval with Condition R received	0				23-Jun-15																	
(C2) DDA for Sewerage, Drainage, Waterworks & Utility works for North Landfall																							
DD02135	Designer to Reply RTC + Update Submission	21	15-Oct-14	07-Nov-14	09-Feb-15A	12-Mar-15A																	
DD02140	Submit Updated DDA to SO/ ICE/ IPs	0	08-Nov-14		12-Mar-15A																		
DD02145	ICE Approval & Issue Check Cert	12	08-Nov-14	21-Nov-14	12-Mar-15A	20-Mar-15A																	
DD02150	Submit ICE Check Cert to SO	6	22-Nov-14	28-Nov-14	20-Mar-15A	20-Mar-15A																	
DD02155	IPs Review	28	08-Nov-14	05-Dec-14	12-Mar-15A	26-May-15																	
DD02160	IPs No Objection Received	0		05-Dec-14		26-May-15																	
DD02165	SO's Review	35	08-Nov-14	12-Dec-14	12-Mar-15A	30-May-15																	
DD02170	SO Approval with Condition R received	0		12-Dec-14		30-May-15																	
Construction																							
DDP1106005	North Landfall - Underground Sewerage & Drainage - Portion N8	43	22-Aug-15	13-Oct-15	14-Dec-15	05-Feb-16																	
Sub-sea Tunnel																							
Sub-sea TBM Tunnelling																							
Major Procurement																							
S881 -																							
PO103360	S881 - 13.6m dia - TBM - Manufacturing - Cutterhead	257	18-Jul-14	03-Jun-15	18-Jul-14A	29-Jun-15																	
PO103370	S881 - 13.6m dia - TBM - Manufacturing - Shield	180	28-Jun-14	31-Jan-15	28-Jun-14A	10-Mar-15A																	
PO103430	S881 - 13.6m dia - TBM - Workshop Assembly	70	02-Feb-15	06-May-15	10-Mar-15A	15-Jun-15																	

■ Planned Bar
■ Planned Bar - Critical
◆ Planned Milestone
■ Progress bar
◆ Progress Milestone



Date	Revision	Checked	Approved
21-Feb-14	TMCLKDBJGJENPRG08505	SPa	WYu
28-Aug-14	TMCLKDBJGJENPRG08505 Rev.C	SPa	WYu

Activity ID	Activity Name	Orig Dur	Planned Start	Planned Finish	Current Start	Current Finish	2015											
							Feb	Mar	Apr	May	Jun	Jul	Aug	Sep	Oct			
PO103440	S881 - 13.6m dia - TBM - Workshop Acceptance Test	0		06-May-15		15-Jun-15												
PO103450	S881 - 13.6m dia - TBM - Disassembly and Packing for Transport	16	07-May-15	26-May-15	16-Jun-15	06-Jul-15												
PO103460	S881 - 13.6m dia - TBM - Delivery	20	27-May-15	15-Jun-15	07-Jul-15	26-Jul-15												
PO103470	S881 - 13.6m dia - TBM - Arrival to site	0		15-Jun-15		26-Jul-15												
Precast Semgnet ID12.40 - Prodcution for Sub-sea TBM Tunnel																		
A6418040	ID12.40 TBM Segment Ring Fabrication - 12 rings per day	300	22-Nov-14	19-Dec-15	29-Nov-14A	21-Apr-16												
Design Submission																		
(B6) Risk Assessment of Submarine Cable - Tunnelling Works																		
GS01410	SO's Comments for 1st Submission	35	13-Jan-15	16-Feb-15	12-Feb-15A	13-Apr-15A												
GS01420	CLP Review (4 weeks)	28	16-Jan-15	12-Feb-15	12-Feb-15A	13-Apr-15A												
GS01425	CLP Comment Received	0		12-Feb-15		13-Apr-15A												
GS01430	Prepare Re-submission	12	17-Feb-15	09-Mar-15	13-Apr-15A	05-May-15A												
GS01435	ICE Cert. Issue	6	10-Mar-15	16-Mar-15	20-Mar-15A	29-Mar-15A												
GS01440	SO Forward ICE Cert. to CLP	3	17-Mar-15	19-Mar-15	30-Mar-15A	10-Apr-15A												
GS01445	2nd Submission	0		09-Mar-15		08-May-15A												
GS01455	SO Forward Submission to CLP	3	10-Mar-15	12-Mar-15	08-May-15A	11-May-15 A												
GS01460	CLP Review (4 weeks)	28	17-Mar-15	13-Apr-15	25-May-15	21-Jun-15												
GS01465	CLP Comment Received	0		13-Apr-15		22-Jun-15												
GS01467	SO's Condition Approval	35	12-Mar-15	15-Apr-15	08-May-15A	23-Jun-15												
(G1) IFA for Structural Health Monitoring System for TBM Tunnel																		
DD71050	IPs Review	28	31-May-14	27-Jun-14	23-Dec-14A	25-May-15												
DD71060	IP's No Objection Received	0		27-Jun-14		25-May-15												
DD71070	SO's Review	35	31-May-14	04-Jul-14	23-Dec-14A	27-May-15												
DD71080	SO Approval with Condition R eceived	0		04-Jul-14		27-May-15												
DD71200	TBM Segment Mould Acceptance & Trial	0	11-Jul-14			27-May-15												
(G1) DDA for TBM Tunnel Lining Structural Design - Sub-sea tunnel																		
DD6670	Sub-sea TBM Tunnel Segment - Fabrication	265	06-Oct-14	29-Aug-15	03-Jan-15A	27-Feb-16												
(G1) DDA for TBM Tunnel Lining Settlement Anlysis & Confinement Pressure - Sub-sea tunnel																		
AN1150	DDA Settlement Analysis & Confinement Pressure for Sub-sea Tunnel	246	21-Nov-13	24-Sep-14	21-Nov-13A	26-Jun-15												
DD6690	Preparation of DDA TBM Confinement - Sub-sea tunnel	0	25-Sep-14	25-Sep-14	27-Jun-15	27-Jun-15												
DD6700	Review & Comment by JV	12	25-Sep-14	10-Oct-14	27-Jun-15	11-Jul-15												
DD6705	Designer prepare DDA	12	11-Oct-14	24-Oct-14	13-Jul-15	25-Jul-15												
DD6710	Formal Submission of DDA to ICE/ IPs	0		24-Oct-14		25-Jul-15												
DD6715	Advanced Submission to SO	0		24-Oct-14		25-Jul-15												
DD6720	IPs/ SO's Advance Comments/ ICE Comments	28	25-Oct-14	21-Nov-14	26-Jul-15	22-Aug-15												
DD67258	Comments Received	0		21-Nov-14		22-Aug-15												
DD6730	Designer to Reply RTC + Update Submission	21	22-Nov-14	16-Dec-14	24-Aug-15	16-Sep-15												
GEO Submission - Highway Tunnel Permanent Works for Sub-sea Section within the CLPP Influence Zone																		
DD72355	1st Submission to GEO	0				25-May-15												
DD72365	1st Submission GEO Review	0			25-May-15	21-Jun-15												
DD72375	Received GEO Comment	0				21-Jun-15												
DD72385	Prepare Response to Comment	0			22-Jun-15	04-Jul-15												
DD72395	2nd Submission to GEO	0				04-Jul-15												
DD72405	2nd GEO Review	0			05-Jul-15	01-Aug-15												
DD72415	Received 2nd GEO Comment	0				01-Aug-15												
DD72425	Prepare Respond to 2nd Comment	0			03-Aug-15	15-Aug-15												
DD72435	3rd Submission to GEO	0				15-Aug-15												
DD72445	3rd GEO Review	0			16-Aug-15	20-Aug-15												
(G3) DDA for TBM Tunnel Internal Structures (Sub-sea)																		
DD00935	Designer to Reply RTC + Update Submission	21	23-Oct-14	15-Nov-14	21-Jan-15A	27-May-15												
DD00940	Submit Updated DDA to SO/ ICE/ IPs	0	17-Nov-14		28-May-15													
DD00945	ICE Approval & Issue Check Cert	12	17-Nov-14	29-Nov-14	28-May-15	10-Jun-15												
DD00950	Submit ICE Check Cert to SO	6	01-Dec-14	06-Dec-14	11-Jun-15	17-Jun-15												
DD00955	IPs Review	28	17-Nov-14	14-Dec-14	28-May-15	24-Jun-15												
DD00960	IP's No Objection Received	0		14-Dec-14		24-Jun-15												
DD00980	SO's Review	35	17-Nov-14	21-Dec-14	28-May-15	01-Jul-15												
DD00985	SO Approval with Condition R eceived	0		22-Dec-14		02-Jul-15												
DD00995	Sub-sea Internal Structure - Precast Gallery Mould Design & Fabrication	24	22-Dec-14	21-Jan-15	02-Jul-15	29-Jul-15												
DD01015	Sub-sea Tunnel - Precast Gallery Fabrication	244	22-Jan-15	21-Nov-15	30-Jul-15	30-May-16												
Sub-sea Tunnel Cross Passage & Internal Structure																		
Design Submission																		
(G4) DDA for Cross Passage - Permanent works - incl. Geotechnical Assessment - Sub-sea tunnel																		
AN1180	Early DDA Sub-sea Cross Passage Lining & CP Opening	151	03-Jun-14	29-Nov-14	03-Jun-14A	30-May-15												
DD01100	Preparation of DDA Cross Passage incl. Detailed Geotechnical Assessment	0	01-Dec-14	01-Dec-14	01-Jun-15	01-Jun-15												
DD01105	Review & Comment by JV	6	01-Dec-14	06-Dec-14	01-Jun-15	06-Jun-15												
DD01110	Designer prepare DDA	12	08-Dec-14	20-Dec-14	08-Jun-15	22-Jun-15												
DD01115	Formal Submission of DDA to ICE/ IPs	0		20-Dec-14		22-Jun-15												
DD01120	Advanced Submission to SO	0		20-Dec-14		22-Jun-15												
DD01125	IPs/ SO's Advance Comments/ ICE Comments	28	21-Dec-14	17-Jan-15	23-Jun-15	20-Jul-15												
DD01130	Comments Received	0		17-Jan-15		20-Jul-15												
DD01135	Designer to Reply RTC + Update Submission	21	19-Jan-15	11-Feb-15	21-Jul-15	13-Aug-15												
DD01140	Submit Updated DDA to SO/ ICE/ IPs	0	12-Feb-15		14-Aug-15													
DD01145	ICE Approval & Issue Check Cert	12	12-Feb-15	04-Mar-15	14-Aug-15	27-Aug-15												
DD01150	Submit ICE Check Cert to SO	6	05-Mar-15	11-Mar-15	28-Aug-15	03-Sep-15												
DD01155	IPs Review	28	12-Feb-15	11-Mar-15	14-Aug-15	10-Sep-15												

Planned Bar
 Planned Bar - Critical
 Planned Milestone
 Progress bar
 Progress Milestone

TMCLK - Northern Connection Sub-Sea Tunnel Section
Detailed Works Programme (Rev. C) - Three months rolling programme
Progress as of 25-May-15



Date	Revision	Checked	Approved
21-Feb-14	TMCLKDBJGEN/PRG/08505	SPa	WYu
28-Aug-14	TMCLKDBJGEN/PRG/08505 Rev.C	SPa	WYu

Activity ID	Activity Name	Orig Dur	Planned Start	Planned Finish	Current Start	Current Finish	2015													
							Feb	Mar	Apr	May	Jun	Jul	Aug	Sep	Oct					
DD01160	IPs No Objection Received	0		11-Mar-15		10-Sep-15														
DD01180	SO's Review	35	12-Feb-15	18-Mar-15	14-Aug-15	17-Sep-15														
DD01185	SO Approval with Condition Received	0		18-Mar-15		17-Sep-15														
Method Statement Submission																				
Method Statement of Cross Passage Formwork																				
MS2600	Preparation Method Statement for CP Formwork	25	19-Mar-15	21-Apr-15	18-Sep-15	19-Oct-15														
MS2610	Submit Method Statement to SO	0		21-Apr-15		19-Oct-15														
MS2620	SO Reviews & Comments	28	22-Apr-15	19-May-15	20-Oct-15	16-Nov-15														
MS2630	Re-submission	18	20-May-15	10-Jun-15	17-Nov-15	07-Dec-15														
MS2640	SO's Review	28	11-Jun-15	08-Jul-15	08-Dec-15	04-Jan-16														
MS2650	SO's Approval	0		08-Jul-15		04-Jan-16														
Method Statement of Cross Passage Ground Freezing																				
MS1300	Preparation Method Statement for CP Ground Freezing	25	17-Sep-14	17-Oct-14	26-May-15	24-Jun-15														
MS1310	Submit Method Statement to SO/ ICE	0		17-Oct-14		24-Jun-15														
MS1320	SO Reviews & Comments/ ICE Comments	28	18-Oct-14	14-Nov-14	25-Jun-15	22-Jul-15														
MS1330	Re-submission	18	15-Nov-14	05-Dec-14	23-Jul-15	12-Aug-15														
MS1340	ICE Approval & Issue Check Cert.	18	06-Dec-14	29-Dec-14	13-Aug-15	02-Sep-15														
MS1350	SO's Review	28	06-Dec-14	02-Jan-15	13-Aug-15	09-Sep-15														
Southern Landfall																				
South Cut & Cover Tunnel																				
Design Submission																				
(E2) AIP for South C&C Box & Ramp Structure																				
AP3210	SO Review (35 Days)	35	14-Oct-14	17-Nov-14	03-Dec-14A	27-May-15														
AP3220	SO Approval with Condition Received	0		17-Nov-14		27-May-15														
(E2) DDA for South C&C Box & Ramp Structure																				
DD00460	Preparation DDA South C&C Box and Approach Ramp	18	18-Nov-14	08-Dec-14	28-May-15	17-Jun-15														
DD00470	Review & Comment by JV	18	09-Dec-14	31-Dec-14	18-Jun-15	10-Jul-15														
DD00480	Designer prepare DDA	10	02-Jan-15	13-Jan-15	11-Jul-15	22-Jul-15														
DD00490	Formal Submission of DDA to ICE/ IPs	0		13-Jan-15		22-Jul-15														
DD00500	Advanced Submission to SO	0		13-Jan-15		22-Jul-15														
DD00510	IPs/ SO's Advance Comments/ ICE Comments	28	14-Jan-15	10-Feb-15	23-Jul-15	19-Aug-15														
DD00520	Comments Received	0		10-Feb-15		19-Aug-15														
DD00530	Designer to Reply RTC + Update Submission	21	11-Feb-15	13-Mar-15	20-Aug-15	12-Sep-15														
DD00540	Submit Updated DDA to SO/ ICE/ IPs	0		14-Mar-15		14-Sep-15														
DD00550	ICE Approval & Issue Check Cert	18	14-Mar-15	08-Apr-15	14-Sep-15	06-Oct-15														
DD00560	Submit ICE Check Cert to SO	6	09-Apr-15	15-Apr-15	07-Oct-15	13-Oct-15														
DD00570	IPs Review	28	14-Mar-15	10-Apr-15	14-Sep-15	11-Oct-15														
DD00580	IPs No Objection Received	0		10-Apr-15		11-Oct-15														
DD00620	SO's Review	35	14-Mar-15	17-Apr-15	14-Sep-15	18-Oct-15														
DD00630	SO Approval with Condition Received	0		17-Apr-15		19-Oct-15														
ETWB TCW No. 15/2005 - Geotechnical Risk Assessment C&C Tunnels at Southern Landfall																				
GEO1300	1st Submission to GEO - ETWB TCW No. 15/2005 - Geotechnical Risk Assessment C&C Tunnels at Southern Landfall	0		11-Jun-15		28-Oct-15														
GEO1305	1st Submission GEO Review	28	12-Jun-15	09-Jul-15	29-Oct-15	25-Nov-15														
GEO1310	Received GEO Comment	0		09-Jul-15		25-Nov-15														
GEO1315	Prepare Response to Comment	12	10-Jul-15	23-Jul-15	26-Nov-15	09-Dec-15														
GEO1320	2nd Submission to GEO	0		23-Jul-15		09-Dec-15														
GEO1325	2nd GEO Review	28	24-Jul-15	20-Aug-15	10-Dec-15	06-Jan-16														
(F3) AIP Temp.Support for South.C&C, Portal & ELS																				
DD69590	Prepare AIP South C&C ELS	18	20-Sep-14	13-Oct-14	02-Mar-15A	19-Mar-15A														
DD69600	Review & Comment by JV	18	14-Oct-14	03-Nov-14	20-Mar-15A	26-Mar-15A														
DD69610	Designer prepare AIP	10	04-Nov-14	14-Nov-14	26-Mar-15A	02-Apr-15A														
DD69620	Formal Submission of AIP to ICE/ IPs	0		14-Nov-14		02-Apr-15A														
DD69630	Advanced Submission to SO	0		14-Nov-14		02-Apr-15A														
DD69640	IPs/ SO's Advance Comments/ ICE Comments	28	15-Nov-14	12-Dec-14	02-Apr-15A	26-May-15														
DD69650	Comments Received	0		12-Dec-14		26-May-15														
DD69660	Designer to Reply RTC + Update Submission	21	13-Dec-14	09-Jan-15	27-May-15	19-Jun-15														
DD69670	Submit Updated AIP to SO/ ICE/ IPs	0		10-Jan-15		22-Jun-15														
DD69680	ICE Approval & Issue Check Cert	12	10-Jan-15	23-Jan-15	22-Jun-15	06-Jul-15														
DD69690	IPs Review	28	10-Jan-15	06-Feb-15	22-Jun-15	19-Jul-15														
DD69700	IPs No Objection Received	0		06-Feb-15		19-Jul-15														
DD69710	SO's Review	35	10-Jan-15	13-Feb-15	22-Jun-15	26-Jul-15														
DD69720	SO Approval with Condition Received	0		13-Feb-15		27-Jul-15														
(F3) DDA Temp.Support for South.C&C, Portal & ELS																				
DD04000	Preparation of DDA South C&C ELS	18	01-Apr-15	25-Apr-15	27-Jul-15	15-Aug-15														
DD04010	Review & Comment by JV	18	27-Apr-15	18-May-15	17-Aug-15	05-Sep-15														
DD04020	Designer prepare DDA	10	19-May-15	30-May-15	07-Sep-15	17-Sep-15														
DD04030	Formal Submission of DDA to ICE/ IPs	0		30-May-15		17-Sep-15														
DD04040	Advanced Submission to SO	0		30-May-15		17-Sep-15														
DD04050	IPs/ SO's Advance Comments/ ICE Comments	28	31-May-15	27-Jun-15	18-Sep-15	15-Oct-15														
DD04060	Comments Received	0		27-Jun-15		15-Oct-15														
DD04070	Designer to Reply RTC + Update Submission	21	29-Jun-15	23-Jul-15	16-Oct-15	10-Nov-15														
DD04080	Submit Updated DDA to SO/ ICE/ IPs	0		24-Jul-15		11-Nov-15														
DD04090	ICE Approval & Issue Check Cert	12	24-Jul-15	06-Aug-15	11-Nov-15	24-Nov-15														
DD04100	Submit ICE Check Cert to SO	6	07-Aug-15	13-Aug-15	25-Nov-15	01-Dec-15														
DD04110	IPs Review	28	24-Jul-15	20-Aug-15	11-Nov-15	08-Dec-15														

- Planned Bar
- Planned Bar - Critical
- ◆ Planned Milestone
- Progress bar
- ◆ Progress Milestone



Date	Revision	Checked	Approved
21-Feb-14	TMCLKDBJGEN/PRG/8505	SPa	WYu
28-Aug-14	TMCLKDBJGEN/PRG/8505 Rev.C	SPa	WYu

Activity ID	Activity Name	Orig Dur	Planned Start	Planned Finish	Current Start	Current Finish	2015											
							Feb	Mar	Apr	May	Jun	Jul	Aug	Sep	Oct			
DD04120	IP's No Objection Received	0		20-Aug-15		08-Dec-15												
DD04160	SO's Review	35	24-Jul-15	27-Aug-15	11-Nov-15	15-Dec-15												
ETWB TCW No 15/2005 - ELS Design for C&C Tunnel at Southern Landfall																		
GEO1390	1st Submission to GEO - ETWB TCW No 15/2005 - ELS Design for C&C Tunnel at Southern Landfall	0		06-Aug-15		24-Nov-15												
GEO1395	1st Submission GEO Review	28	07-Aug-15	03-Sep-15	25-Nov-15	22-Dec-15												
Method Statement Submission																		
Method Statement of Construction Methodology of C&C Tunnels																		
MS1700	Preparation Method Statement for C&C Tunnels	25	28-Mar-15	30-Apr-15	26-May-15	24-Jun-15												
MS1710	Submit Method Statement to SO	0		30-Apr-15		24-Jun-15												
MS1720	SO Reviews & Comments	28	01-May-15	28-May-15	25-Jun-15	22-Jul-15												
MS1730	Re-submission	18	29-May-15	18-Jun-15	23-Jul-15	12-Aug-15												
MS1740	SO's Review	28	19-Jun-15	16-Jul-15	13-Aug-15	09-Sep-15												
MS1750	SO's Approval	0		16-Jul-15		09-Sep-15												
South Retrieval Shaft																		
Design Submission																		
(A4) Additional Ground Investigation Plan - Phase 3 - Southern Landfall																		
GS2870	Preparation of Additional Ground Investigation (Phase 3)	11	15-Jan-15	27-Jan-15	20-Feb-15A	02-Mar-15A												
GS2880	1st Submission	0		27-Jan-15		02-Mar-15A												
GS2905	SO's Comments for 1st Submission	35	28-Jan-15	03-Mar-15	02-Mar-15A	30-May-15												
GS2910	SO's Condition Approval	0		03-Mar-15		30-May-15												
(A5) Ground Investigation Report - Phase 3 - Southern Landfall																		
GS2960	Preparation of Ground Investigation Report - Phase 3 - Southern Landfall	36	01-Apr-15	18-May-15	30-Jun-15	11-Aug-15												
GS2970	*1st Submission	0		18-May-15		11-Aug-15												
GS2980	SO's Comments for 1st Submission	35	19-May-15	22-Jun-15	12-Aug-15	15-Sep-15												
GS2990	Prepare Re-submission	10	23-Jun-15	04-Jul-15	16-Sep-15	26-Sep-15												
GS3020	*2nd Submission	0		04-Jul-15		26-Sep-15												
GS3040	SO's Condition Approval	35	05-Jul-15	08-Aug-15	27-Sep-15	31-Oct-15												
(B5) AIP Construction Risk Assessment - Impact on South Landfall																		
GS01200	Preparation of Construction Risk Assessment - Impact on South Landfall	36	30-Oct-14	10-Dec-14	02-Feb-15A	02-Apr-15A												
GS01205	1st Submission	0		10-Dec-14		02-Apr-15A												
GS01210	SO's Comments for 1st Submission	35	11-Dec-14	14-Jan-15	02-Apr-15A	06-Jun-15												
GS01215	Prepare Re-submission	10	15-Jan-15	26-Jan-15	08-Jun-15	18-Jun-15												
GS01220	2nd Submission	0		26-Jan-15		18-Jun-15												
GS01225	ICE Cert. Issue	6	27-Jan-15	02-Feb-15	19-Jun-15	26-Jun-15												
GS01250	SO's Condition Approval	35	27-Jan-15	02-Mar-15	19-Jun-15	23-Jul-15												
(B5) DDA Construction Risk Assessment - Impact on South Landfall																		
DD68500	Preparation of Construction Risk Assessment - Impact on South Landfall	36	03-Mar-15	17-Apr-15	24-Jul-15	03-Sep-15												
DD68510	1st Submission	0		17-Apr-15		03-Sep-15												
DD68520	SO's Comments for 1st Submission	35	18-Apr-15	22-May-15	04-Sep-15	08-Oct-15												
DD68530	Prepare Re-submission	10	23-May-15	04-Jun-15	09-Oct-15	20-Oct-15												
DD68540	2nd Submission	0		04-Jun-15		20-Oct-15												
DD68550	ICE Cert. Issue	6	05-Jun-15	11-Jun-15	22-Oct-15	28-Oct-15												
DD68600	SO's Condition Approval	35	05-Jun-15	09-Jul-15	21-Oct-15	24-Nov-15												
(F1) AIP Temp.works - Retrieval Shaft on Southern Landfall inc. break-out																		
AP01600	Preparation of AIP Retrieval Shaft on Sth Landfall incl break out	12	20-Sep-14	06-Oct-14	02-Mar-15A	13-Mar-15A												
AP01605	Review & Comment by JV	12	07-Oct-14	20-Oct-14	13-Mar-15A	26-Mar-15A												
AP01610	Designer Prepare AIP	6	21-Oct-14	27-Oct-14	26-Mar-15A	02-Apr-15A												
AP01615	Formal Submission of AIP to ICE/IPs	0		27-Oct-14		02-Apr-15A												
AP01620	Advanced Submission of AIP to SO	0		27-Oct-14		02-Apr-15A												
AP01625	Review & Comment by SO/ ICE/ IPs	28	28-Oct-14	24-Nov-14	02-Apr-15A	27-Apr-15A												
AP01630	Advance Comments from SO/ Comments from ICE/ IPs Received	0		24-Nov-14		27-Apr-15A												
AP01635	Designer to Prepare RTC & Updated AIP	18	25-Nov-14	15-Dec-14	28-Apr-15A	27-May-15												
AP01640	Submission of AIP to SO/ ICE together with Reply To Comment (RTC)	0		15-Dec-14		27-May-15												
AP01645	Reply to IPs Comments in RTC	0		15-Dec-14		27-May-15												
AP01650	ICE Approval & Issue of Design Check Cert.	18	16-Dec-14	08-Jan-15	28-May-15	17-Jun-15												
AP01655	Check Cert to SO	0		08-Jan-15		17-Jun-15												
AP01660	No Objection or Further Minor Comments from IPs Received	0		08-Jan-15		17-Jun-15												
AP01680	SO Review (35 Days)	35	17-Dec-14	20-Jan-15	28-May-15	01-Jul-15												
AP01685	SO Approval with Condition Received	0		20-Jan-15		02-Jul-15												
(F1) DDA Temp.works - Retrieval Shaft on Southern Landfall inc. break-out																		
DD03510	Preparation of DDA Temp Support for Sth Retrieval Shaft	18	01-Apr-15	25-Apr-15	02-Jul-15	22-Jul-15												
DD03520	Review & Comment by JV	18	27-Apr-15	18-May-15	23-Jul-15	12-Aug-15												
DD03530	Designer prepare DDA	6	19-May-15	26-May-15	13-Aug-15	19-Aug-15												
DD03540	Formal Submission of DDA to ICE/ IPs	0		26-May-15		19-Aug-15												
DD03550	Advanced Submission to SO	0		26-May-15		19-Aug-15												
DD03560	IPs/ SO's Advance Comments/ ICE Comments	28	27-May-15	23-Jun-15	20-Aug-15	16-Sep-15												
DD03570	Comments Received	0		23-Jun-15		16-Sep-15												
DD03580	Designer to Reply Rtc + Update Submission	21	24-Jun-15	18-Jul-15	17-Sep-15	13-Oct-15												
DD03590	Submit Updated DDA to SO/ ICE/ IPs	0		20-Jul-15		14-Oct-15												
DD03600	ICE Approval & Issue Check Cert	12	20-Jul-15	01-Aug-15	14-Oct-15	28-Oct-15												
DD03610	Submit ICE Check Cert to SO	6	03-Aug-15	08-Aug-15	29-Oct-15	04-Nov-15												
DD03620	IPs Review	28	20-Jul-15	16-Aug-15	14-Oct-15	10-Nov-15												
DD03630	IPs No Objection Received	0		16-Aug-15		10-Nov-15												
DD03670	SO's Review	35	20-Jul-15	23-Aug-15	14-Oct-15	17-Nov-15												
DD03680	SO Approval with Condition Received	0		24-Aug-15		17-Nov-15												

- Planned Bar
- Planned Bar - Critical
- Planned Milestone
- Progress bar
- Progress Milestone



Dragages - Bouygues Joint Venture 寶嘉 - 布依格聯營

Date	Revision	Checked	Approved
21-Feb-14	TMCLKDBJGEN/PRG#8505	SPa	WYu
28-Aug-14	TMCLKDBJGEN/PRG#8505 Rev.C	SPa	WYu

Activity ID	Activity Name	Orig Dur	Planned Start	Planned Finish	Current Start	Current Finish	2015													
							Feb	Mar	Apr	May	Jun	Jul	Aug	Sep	Oct					
ETWB TCW No 15/2005 - ELS Design for TBM Retrieval Shaft at Southern Landfall																				
GEO1330	1st Submission to GEO - ETWB TCW No 15/2005 - ELS Design for TBM Retrieval Shaft at Southern Landfall	0		24-Aug-15		17-Nov-15														◆ 1st Submission to GEO
GEO1335	1st Submission GEO Review	28	24-Aug-15	20-Sep-15	18-Nov-15	15-Dec-15														■ 1st Submission
(F2) AIP Temp works of Ground Treatment for TBMs passing under Southern Landfall																				
AP01900	Preparation of AIP Ground Improvement works in Sth Landfall Seawall	18	01-Sep-14	22-Sep-14	27-Mar-15A	15-Apr-15A														
AP01905	Review & Comment by JV	18	23-Sep-14	15-Oct-14	16-Apr-15A	27-May-15														
AP01910	Designer Prepare AIP	12	16-Oct-14	29-Oct-14	28-May-15	10-Jun-15														
AP01915	Formal Submission of AIP to ICE/IPs	0		29-Oct-14		10-Jun-15														
AP01920	Advanced Submission of AIP to SO	0		29-Oct-14		10-Jun-15														
AP01925	Review & Comment by SO/ ICE/ IPs	28	30-Oct-14	26-Nov-14	11-Jun-15	08-Jul-15														
AP01930	Advance Comments from SO/ Comments from ICE/ IPs Received	0		26-Nov-14		08-Jul-15														
AP01935	Designer to Prepare RTC & Updated AIP	18	27-Nov-14	17-Dec-14	09-Jul-15	29-Jul-15														
AP01940	Submission of AIP to SO/ ICE together with Reply To Comment (RTC)	0		17-Dec-14		29-Jul-15														
AP01945	Reply to IPs Comments in RTC	0		17-Dec-14		29-Jul-15														
AP01950	ICE Approval & Issue of Design Check Cert.	18	18-Dec-14	10-Jan-15	30-Jul-15	19-Aug-15														
AP01955	Check Cert to SO	0		10-Jan-15		19-Aug-15														
AP01960	No Objection or Further Minor Comments from IPs Received	0		10-Jan-15		19-Aug-15														
AP01980	SO Review (35 Days)	35	19-Dec-14	22-Jan-15	30-Jul-15	02-Sep-15														
(F2) DDA Temp works of Ground Treatment for TBMs passing under Southern Landfall																				
DD04740	Preparation of DDA Ground Improvement in Southern Landfall Seawall	18	01-Apr-15	25-Apr-15	03-Sep-15	23-Sep-15														
DD04750	Review & Comment by JV	18	27-Apr-15	18-May-15	24-Sep-15	16-Oct-15														
DD04760	Designer prepare DDA	6	19-May-15	26-May-15	17-Oct-15	24-Oct-15														
DD04770	Formal Submission of DDA to ICE/ IPs	0		26-May-15		24-Oct-15														
DD04780	Advanced Submission to SO	0		26-May-15		24-Oct-15														
DD04790	IPs/ SO's Advance Comments/ ICE Comments	28	27-May-15	23-Jun-15	25-Oct-15	21-Nov-15														
DD04800	Comments Received	0		23-Jun-15		21-Nov-15														
DD04810	Designer to Reply RTC + Update Submission	21	24-Jun-15	18-Jul-15	23-Nov-15	16-Dec-15														
DD04820	Submit Updated DDA to SO/ ICE/ IPs	0		20-Jul-15		17-Dec-15														
DD04830	ICE Approval & Issue Check Cert	12	20-Jul-15	01-Aug-15	17-Dec-15	02-Jan-16														
DD04840	Submit ICE Check Cert to SO	6	03-Aug-15	08-Aug-15	04-Jan-16	09-Jan-16														
DD04850	IPs Review	28	20-Jul-15	16-Aug-15	17-Dec-15	13-Jan-16														
DD04860	IPs No Objection Received	0		16-Aug-15		13-Jan-16														
DD04900	SO's Review	35	20-Jul-15	23-Aug-15	17-Dec-15	20-Jan-16														
DD04910	SO Approval with Condition Received	0		24-Aug-15		20-Jan-16														
ETWB TCW No 15/2005 - ELS Design for Temporary Measures for Ground Improvement																				
GEO1360	1st Submission to GEO - ETWB TCW No. 15/2005 - ELS Design for Ground Improvement at Southern Landfall	0		24-Aug-15		20-Jan-16														
GEO1365	1st Submission GEO Review	28	24-Aug-15	20-Sep-15	21-Jan-16	17-Feb-16														
(F4) Gantry Crane Support/Foundations in Southern Landfall																				
DD69730	Preparation of IFA Gantry Crane / Foundation	18	27-Jul-15	15-Aug-15	13-Nov-15	03-Dec-15														
DD69740	Review & Comment by JV	18	17-Aug-15	05-Sep-15	04-Dec-15	24-Dec-15														
Method Statement Submission																				
Method Statement of Construction Methodology of Retrieval Shaft																				
MS1600	Preparation Method Statement for Retrieval Shaft	25	24-Aug-15	21-Sep-15	18-Nov-15	16-Dec-15														
Construction																				
DDP11430	South Landfall GI Works/DW Setting Up	48	06-Aug-15	02-Oct-15	25-Nov-15	22-Jan-16														
South Ventilation Building																				
Design Submission																				
(I1) DDA for South Vent. Bldg. GBP & Arch. Submission																				
DD01410	Designer prepare DDA	15	13-Oct-14	29-Oct-14	21-Feb-15A	25-Feb-15A														
DD01415	Formal Submission of DDA to ICE/ IPs	0		29-Oct-14		25-Feb-15A														
DD01420	Advanced Submission to SO	0		29-Oct-14		25-Feb-15A														
DD01425	IPs/ SO's Advance Comments/ ICE Comments	28	30-Oct-14	26-Nov-14	25-Feb-15A	29-Jun-15														
DD01430	Comments Received	0		26-Nov-14		29-Jun-15														
DD01435	Designer to Reply RTC + Update Submission	21	27-Nov-14	20-Dec-14	30-Jun-15	24-Jul-15														
DD01440	Submit Updated DDA to SO/ ICE/ IPs	0		22-Dec-14		25-Jul-15														
DD01445	ICE Approval & Issue Check Cert	18	22-Dec-14	14-Jan-15	25-Jul-15	14-Aug-15														
DD01450	Submit ICE Check Cert to SO	6	15-Jan-15	21-Jan-15	15-Aug-15	21-Aug-15														
DD01455	IPs Review	28	22-Dec-14	18-Jan-15	25-Jul-15	21-Aug-15														
DD01460	IPs No Objection Received	0		18-Jan-15		21-Aug-15														
DD01465	SO's Review	35	22-Dec-14	25-Jan-15	25-Jul-15	28-Aug-15														
(I2) DDA for South Vent. Bldg. Foundation Design																				
DD01500	Preparation of DDA Sth VB Foundation	18	01-Apr-15	25-Apr-15	25-Jul-15	14-Aug-15														
DD01505	Review & Comment by JV	18	27-Apr-15	18-May-15	15-Aug-15	04-Sep-15														
DD01510	Designer prepare DDA	10	19-May-15	30-May-15	05-Sep-15	16-Sep-15														
DD01515	Formal Submission of DDA to ICE/ IPs	0		30-May-15		16-Sep-15														
DD01520	Advanced Submission to SO	0		30-May-15		16-Sep-15														
DD01525	IPs/ SO's Advance Comments/ ICE Comments	28	31-May-15	27-Jun-15	17-Sep-15	14-Oct-15														
DD01530	Comments Received	0		27-Jun-15		14-Oct-15														
DD01535	Designer to Reply RTC + Update Submission	21	29-Jun-15	23-Jul-15	15-Oct-15	09-Nov-15														
DD01540	Submit Updated DDA to SO/ ICE/ IPs	0		24-Jul-15		10-Nov-15														
DD01545	ICE Approval & Issue Check Cert	18	24-Jul-15	13-Aug-15	10-Nov-15	30-Nov-15														
DD01550	Submit ICE Check Cert to SO	6	14-Aug-15	20-Aug-15	01-Dec-15	07-Dec-15														
DD01555	IPs Review	28	24-Jul-15	20-Aug-15	10-Nov-15	07-Dec-15														
DD01560	IPs No Objection Received	0		20-Aug-15		07-Dec-15														
DD01580	SO's Review	35	24-Jul-15	27-Aug-15	10-Nov-15	14-Dec-15														

- Planned Bar
- Planned Bar - Critical
- ◆ Planned Milestone
- Progress bar
- ◆ Progress Milestone



Date	Revision	Checked	Approved
21-Feb-14	TMCLKDBJGEN/PRG#8505	SPa	WYu
28-Aug-14	TMCLKDBJGEN/PRG#8505 Rev.C	SPa	WYu

Activity ID	Activity Name	Orig Dur	Planned Start	Planned Finish	Current Start	Current Finish	2015												
							Feb	Mar	Apr	May	Jun	Jul	Aug	Sep	Oct				
(I2) DDA for South Vent. Bldg. Structural Design incl. Vent. Connections																			
DD67818	Review & Comment by JV	18	18-Feb-15	17-Mar-15	20-Oct-15	10-Nov-15													
DD67820	Designer prepare DDA	10	18-Mar-15	28-Mar-15	11-Nov-15	21-Nov-15													
DD67828	Formal Submission of DDA to ICE/ IPs	0		28-Mar-15		21-Nov-15													
DD67830	Advanced Submission to SO	0		28-Mar-15		21-Nov-15													
DD67838	IPs/ SO's Advance Comments/ ICE Comments	28	29-Mar-15	25-Apr-15	22-Nov-15	19-Dec-15													
DD67840	Comments Received	0		25-Apr-15		19-Dec-15													
DD67848	Designer to Reply RTC + Update Submission	21	27-Apr-15	21-May-15	21-Dec-15	16-Jan-16													
DD67858	Submit Updated DDA to SO/ ICE/ IPs	0	22-May-15		18-Jan-16														
DD67868	ICE Approval & Issue Check Cert	18	22-May-15	12-Jun-15	18-Jan-16	06-Feb-16													
DD67878	Submit ICE Check Cert to SO	6	13-Jun-15	19-Jun-15	15-Feb-16	20-Feb-16													
DD67888	IPs Review	28	22-May-15	18-Jun-15	18-Jan-16	14-Feb-16													
DD67898	IPs No Objection Received	0		18-Jun-15		14-Feb-16													
DD67940	SO's Review	35	22-May-15	25-Jun-15	18-Jan-16	21-Feb-16													
DD67950	SO Approval with Condition R received	0		25-Jun-15		22-Feb-16													
(J1) DDA Temp. works for Construction of Sth. Vent. Bldg.																			
DD04560	Preparation of DDA South VB ELS	18	01-Jun-15	22-Jun-15	17-Sep-15	09-Oct-15													
DD04570	Review & Comment by JV	18	23-Jun-15	14-Jul-15	10-Oct-15	31-Oct-15													
DD04580	Designer prepare DDA	10	15-Jul-15	25-Jul-15	02-Nov-15	12-Nov-15													
DD04590	Formal Submission of DDA to ICE/ IPs	0		25-Jul-15		12-Nov-15													
DD04600	Advanced Submission to SO	0		25-Jul-15		12-Nov-15													
DD04610	IPs/ SO's Advance Comments/ ICE Comments	28	26-Jul-15	22-Aug-15	13-Nov-15	10-Dec-15													
DD04620	Comments Received	0		22-Aug-15		10-Dec-15													
DD04630	Designer to Reply RTC + Update Submission	21	24-Aug-15	16-Sep-15	11-Dec-15	07-Jan-16													
Construction																			
DDP11930	Mobilization & Setting Up Piling Rigs	64	06-Aug-15	22-Oct-15	06-Aug-15	22-Oct-15													
South Surface Roadworks, Utility & Drainage works																			
Design Submission																			
(E3) DDA for Sewerage, Drainage, Waterworks & Utility works for South Landfall																			
DD05810	Preparation of DDA Sewerage & Drainage works for Sth Landfall	18	08-Nov-14	28-Nov-14	02-Mar-15A	15-Mar-15A													
DD05820	Review & Comment by JV	18	29-Nov-14	19-Dec-14	16-Mar-15A	25-Mar-15A													
DD05830	Designer prepare DDA	10	20-Dec-14	03-Jan-15	25-Mar-15A	27-Mar-15A													
DD05840	Advanced Submission to SO	0		03-Jan-15		27-Mar-15A													
DD05850	Formal Submission of DDA to ICE/ IPs	0		03-Jan-15		27-Mar-15A													
DD05860	IPs/ SO's Advance Comments/ ICE Comments	28	04-Jan-15	31-Jan-15	27-Mar-15A	26-May-15													
DD05870	Comments Received	0		31-Jan-15		26-May-15													
DD05880	Designer to Reply RTC + Update Submission	21	02-Feb-15	04-Mar-15	27-May-15	19-Jun-15													
DD05890	Submit Updated DDA to SO/ ICE/ IPs	0	05-Mar-15		22-Jun-15														
DD05900	ICE Approval & Issue Check Cert	12	05-Mar-15	18-Mar-15	22-Jun-15	06-Jul-15													
DD05910	Submit ICE Check Cert to SO	6	19-Mar-15	25-Mar-15	07-Jul-15	13-Jul-15													
DD05920	IPs Review	28	05-Mar-15	01-Apr-15	22-Jun-15	19-Jul-15													
DD05930	IPs No Objection Received	0		01-Apr-15		19-Jul-15													
DD05940	SO's Review	35	05-Mar-15	08-Apr-15	22-Jun-15	26-Jul-15													
DD05950	SO Approval with Condition R received	0		08-Apr-15		27-Jul-15													
Method Statement Submission																			
Method Statement of Ground Treatment for TBMs Passing under Southern Landfall Seawall																			
MS2700	Preparation Method Statement for Ground Improvement in South Landfall	9	20-Jul-15	29-Jul-15	17-Dec-15	29-Dec-15													
MS2710	Submit Method Statement to SO	0		29-Jul-15		29-Dec-15													
MS2720	SO Reviews & Comments	28	30-Jul-15	26-Aug-15	30-Dec-15	26-Jan-16													
Construction																			
DDP11435	Temporary Platform for Ground Treatment for TBM passing under Southern Seawall	48	06-Aug-15	02-Oct-15	06-Aug-15	02-Oct-15													

- Planned Bar
- Planned Bar - Critical
- ◆ Planned Milestone
- Progress bar
- ◆ Progress Milestone



Date	Revision	Checked	Approved
21-Feb-14	TMCLKDBJGEN/PRG#8505	SPa	WYu
28-Aug-14	TMCLKDBJGEN/PRG#8505 Rev.C	SPa	WYu