

Activity Name	Orig Dur	DWPF Start	DWPF Finish	% Comp	2016							
					May	Jun	Jul	Aug	Sep	Oct	Nov	Dec
TMCLK - Northern Connection Sub-Sea Tunnel Section												
Contract Dates												
Site Possession Date												
Portions: X1, (N10,11,13 & 14) - Sth Landfall	0	06-Aug-15		0%								
Handover Date												
Portions: N8A, N8B(above +3), N8C	0		03-Dec-15	0%								
General Submissions												
Environmental												
Environmental Permit Submissions												
Supplementary WMP of C&C Tunnel at Sth.Landfall												
Supplementary WMP of C&C Tunnel at Sth.Landfall	0		28-Jun-14	0%								
Sediment Quality Report/Dumping Permit												
Southern Landfall												
Southern landfall - Commencement of Shaft & C&C Tunnel Dwall	0	03-Oct-15		0%								
Sediment Sampling & Testing Plan (SSTP) - if required												
Complete SSTP and Obtain EPD's approval	24	17-Feb-15	23-Mar-15	50%								
Sediment Quality Report (SQR) - if required												
Advance Ground Investigation works for Sediment sampling	24	24-Mar-15	24-Apr-15	90%								
Sediment Sample Testing & Report preparation	120	25-Apr-15	16-Sep-15	0%								
Dumping Permit for Load Dumping (Loading Permit) - if required												
Finalize the application document and submit to EPD - for Dwall	24	20-Jan-15	16-Feb-15	0%								
Notify the results and issue Loading Permit for Local & Cross Boundary Crossing - for Dwall	24	17-Feb-15	23-Mar-15	0%								
General Design Submissions												
(G6) IFA for Tunnel GBP												
SO's Review	35	29-Apr-14	02-Jun-14	94%								
SO Approval with Condition Received	0		03-Jun-14	0%								
PAYMENT MILESTONE												
Design and Design Checking of the Works												
MS 2.20.3 Approve DDA for Cross Passages by the Supervising Officer by the Supervising Officer	0		31-Mar-15	100%								
MS 2.32 Approve DDA for Approach Ramp Structures to Cut-and-cover Tunnels by the Supervising Officer	0		30-Apr-15	0%								
MS 2.44 Approve DDA for South Ventilation Building by the Supervising Officer	0		30-Jun-15	0%								
MS 2.48 Approve DDA for North Ventilation Building by the Supervising Officer	0		31-Jan-15	0%								
MS 2.51 Submit DDA for Facilities Provision for TCSS	0		29-Nov-14	0%								
MS 2.52 Approve DDA for Facilities Provision for TCSS by the Supervising Officer	0		28-Feb-15	0%								
MS 2.56 Approve DDA for Drainage, Sewerage, Waterworks and Utilities at Southern Landfall by the Supervi	0		30-Apr-15	0%								
MS 2.60 Approve DDA for Drainage, Sewerage, Waterworks and Utilities at Northern Landfall by the Supervi	0		31-Dec-14	0%								
MS 2.69 Submit draft Operation and Maintenance Manual for all Tunnels and Cross Passgaes	0		29-Feb-16	0%								
MS 2.70 Accept Operation and Maintenance Manual for all Tunnels and Cross Passgaes by the Supervising	0		30-Jun-16	0%								
MS 2.71 Submit draft Operation and Maintenance Manual for all works except Tunnels and Cross Passgaes	0		29-Feb-16	0%								
MS 2.72 Accept Operation and Maintenance Manual for all works except Tunnels and Cross Passgaes by the	0		30-Jun-16	0%								
TBM Tunnel												
MS 3.3.4 Complete walls of retrieval shaft	0		30-Jan-16	100%								
MS 3.3.7 Completion of excavation, support and permanent lining for 1% of the total length (measured on pla	0		31-Dec-15	100%								
MS 3.3.8 Completion of excavation, support and permanent lining for 2% of the total length (measured on pla	0		31-Dec-15	100%								
MS 3.3.9 Completion of excavation, support and permanent lining for 3% of the total length (measured on pla	0		31-Dec-15	100%								
MS 3.3.10 Completion of excavation, support and permanent lining for 4% of the total length (measured on pl	0		30-Jan-16	100%								
MS 3.3.11 Completion of excavation, support and permanent lining for 5% of the total length (measured on pl	0		30-Jan-16	100%								
MS 3.3.12 Completion of excavation, support and permanent lining for 6% of the total length (measured on pl	0		30-Jan-16	100%								
MS 3.3.13 Completion of excavation, support and permanent lining for 7% of the total length (measured on pl	0		30-Jan-16	100%								
MS 3.3.14 Completion of excavation, support and permanent lining for 8% of the total length (measured on pl	0		29-Feb-16	100%								
MS 3.3.15 Completion of excavation, support and permanent lining for 9% of the total length (measured on pl	0		29-Feb-16	100%								
MS 3.3.16 Completion of excavation, support and permanent lining for 10% of the total length (measured on	0		29-Feb-16	100%								
MS 3.3.17 Completion of excavation, support and permanent lining for 11% of the total length (measured on	0		29-Feb-16	100%								
MS 3.3.18 Completion of excavation, support and permanent lining for 12% of the total length (measured on	0		31-Mar-16	100%								
MS 3.3.19 Completion of excavation, support and permanent lining for 13% of the total length (measured on	0		31-Mar-16	0%								
MS 3.3.20 Completion of excavation, support and permanent lining for 14% of the total length (measured on	0		31-Mar-16	0%								
MS 3.3.21 Completion of excavation, support and permanent lining for 15% of the total length (measured on	0		31-Mar-16	0%								
MS 3.3.22 Completion of excavation, support and permanent lining for 16% of the total length (measured on	0		31-Mar-16	0%								
MS 3.3.23 Completion of excavation, support and permanent lining for 17% of the total length (measured on	0		30-Apr-16	0%								
MS 3.3.24 Completion of excavation, support and permanent lining for 18% of the total length (measured on	0		30-Apr-16	0%								
MS 3.3.25 Completion of excavation, support and permanent lining for 19% of the total length (measured on	0		30-Apr-16	0%								
MS 3.3.26 Completion of excavation, support and permanent lining for 20% of the total length (measured on	0		30-Apr-16	0%								
MS 3.3.27 Completion of excavation, support and permanent lining for 21% of the total length (measured on	0		30-Apr-16	0%								
MS 3.3.28 Completion of excavation, support and permanent lining for 22% of the total length (measured on	0		30-Apr-16	0%								
MS 3.3.29 Completion of excavation, support and permanent lining for 23% of the total length (measured on	0		30-Apr-16	0%								
MS 3.3.30 Completion of excavation, support and permanent lining for 24% of the total length (measured on	0		31-May-16	0%								
MS 3.3.31 Completion of excavation, support and permanent lining for 25% of the total length (measured on	0		31-May-16	0%								
MS 3.3.32 Completion of excavation, support and permanent lining for 27.5% of the total length (measured on	0		31-May-16	0%								
MS 3.3.33 Completion of excavation, support and permanent lining for 30% of the total length (measured on	0		31-May-16	0%								
MS 3.3.34 Completion of excavation, support and permanent lining for 32.5% of the total length (measured on	0		30-Jun-16	0%								
MS 3.3.35 Completion of excavation, support and permanent lining for 35% of the total length (measured on	0		30-Jun-16	0%								
MS 3.3.36 Completion of excavation, support and permanent lining for 37.5% of the total length (measured on	0		30-Jun-16	0%								
MS 3.3.37 Completion of excavation, support and permanent lining for 40% of the total length (measured on	0		30-Jul-16	0%								
MS 3.3.38 Completion of excavation, support and permanent lining for 42.5% of the total length (measured on	0		30-Jul-16	0%								
MS 3.3.39 Completion of excavation, support and permanent lining for 45% of the total length (measured on	0		30-Jul-16	0%								
MS 3.3.40 Completion of excavation, support and permanent lining for 47.5% of the total length (measured on	0		30-Jul-16	0%								
MS 3.3.41 Completion of excavation, support and permanent lining for 50% of the total length (measured on	0		31-Aug-16	0%								
MS 3.3.42 Completion of excavation, support and permanent lining for 52.5% of the total length (measured on	0		31-Aug-16	0%								
MS 3.3.43 Completion of excavation, support and permanent lining for 55% of the total length (measured on	0		31-Aug-16	0%								
MS 3.3.44 Completion of excavation, support and permanent lining for 57.5% of the total length (measured on	0		31-Aug-16	0%								
MS 3.3.45 Completion of excavation, support and permanent lining for 60% of the total length (measured on	0		31-Aug-16	0%								
MS 3.3.46 Completion of excavation, support and permanent lining for 62.5% of the total length (measured on	0		30-Sep-16	0%								

- Planned Bar
- Planned Bar - Critical
- ◆ Planned Milestone
- Progress bar
- ◆ Progress Milestone

TMCLK - Northern Connection Sub-Sea Tunnel Section
Detailed Works Programme (Rev. F)
Three Months Rolling Programme
Progress as of 31-Aug-16



Date	Revision	Checked	Approved
12-Feb-14	TMCLKDBJGEN-PRG08507	WYu	SPo
08-Apr-14	TMCLKDBJGEN-PRG08507 Rev. B	SPa	WYu
28-Aug-14	TMCLKDBJGEN-PRG08507 Rev. C	CLa	WYu
30-Oct-15	TMCLKDBJGEN-PRG08507 Rev. F	WYu	

Activity Name	Orig Dur	DWPF Start	DWPF Finish	% Comp	2016											
					May	Jun	Jul	Aug	Sep	Oct	Nov	Dec				
MS 5.1.8 Complete retaining wall foundation for 30% of the total length (measured on plan) of approach ramp structure	0		30-Nov-15	0%												
MS 5.1.9 Complete retaining wall foundation for 40% of the total length (measured on plan) of approach ramp structure	0		31-Dec-15	0%												
MS 5.1.10 Complete retaining wall foundation for 50% of the total length (measured on plan) of approach ramp structure	0		31-Dec-15	0%												
MS 5.1.11 Complete retaining wall foundation for 60% of the total length (measured on plan) of approach ramp structure	0		30-Jan-16	0%												
MS 5.1.12 Complete retaining wall foundation for 70% of the total length (measured on plan) of approach ramp structure	0		30-Jan-16	0%												
MS 5.1.13 Complete retaining wall foundation for 80% of the total length (measured on plan) of approach ramp structure	0		29-Feb-16	0%												
MS 5.1.14 Complete retaining wall foundation for 90% of the total length (measured on plan) of approach ramp structure	0		29-Feb-16	0%												
MS 5.1.15 Complete retaining wall foundation for 100% of the total length (measured on plan) of approach ramp structure	0		31-Mar-16	0%												
South Ventilation Buildings																
MS 7.1.1 Complete 100% of cofferdam for excavation	0		30-Sep-16	0%												◆ MS 7.1.1 Complete 100% of cofferdam for excavation
MS 7.1.2 Complete 100% of excavation to the formation level	0		30-Sep-16	0%												◆ MS 7.1.2 Complete 100% of excavation to the formation level
MS 7.1.3 Complete 100% of foundation for the ventilation building	0		30-Apr-16	0%												◆ MS 7.1.3 Complete 100% of foundation for the ventilation building
MS 7.1.4 Complete concreting works of 25% area of the total construction floor area for the ventilation building	0		31-Oct-16	0%												◆ MS 7.1.4 Complete concreting works of 25% area of the total construction floor area for the ventilation building
North Ventilation Buildings																
MS 7.2.1 Complete 100% of cofferdam for excavation	0		31-May-16	0%												◆ MS 7.2.1 Complete 100% of cofferdam for excavation
MS 7.2.2 Complete 100% of excavation to the formation level	0		31-May-16	0%												◆ MS 7.2.2 Complete 100% of excavation to the formation level
MS 7.2.4 Complete concreting works of 25% area of the total construction floor area for the ventilation building	0		30-Jul-16	0%												◆ MS 7.2.4 Complete concreting works of 25% area of the total construction floor area for the ventilation building
MS 7.2.5 Complete concreting works of 50% area of the total construction floor area for the ventilation building	0		31-Oct-16	0%												◆ MS 7.2.5 Complete concreting works of 50% area of the total construction floor area for the ventilation building
Facilities Provision for E&M Works for TBM Tunnel, Cut & Cover Tunnels and Cross Passages																
MS 9.1.1 Complete 25% of bonding terminal, opening and accessories, etc.	0		30-Sep-16	0%												◆ MS 9.1.1 Complete 25% of bonding terminal, opening and accessories, etc.
MS 9.1.2 Complete 25% of plinth, hoisting facilities and accessories, etc.	0		30-Sep-16	0%												◆ MS 9.1.2 Complete 25% of plinth, hoisting facilities and accessories, etc.

Construction					
Northern Landfall					
North Reclamation (Phase 1)					
Construction					
Zone B					
Reclamation					
Surcharge Removal - Zone B - (CH598 to 698) stage 1	10	28-Jul-16	08-Aug-16	0%	Surcharge Removal - Zone B - (CH598 to 698) stage 1
Surcharge Period - Zone B - (CH648 to 698) stage 2	180	09-Aug-16	04-Feb-17	0%	
Box Culvert Extension					
Construction					
Ch000-010 Culvert Outfall					
Installation of temporary bulk head	26	10-Aug-15	08-Sep-15	100%	
Removal of public fill at outfall area	4	09-Sep-15	12-Sep-15	100%	
Cut sheet pile wall below water level by diver	18	14-Sep-15	06-Oct-15	100%	
Removal of temporary seawall block	3	07-Oct-15	09-Oct-15	100%	
Preparation & pour blinding concrete base of box culvert outfall	8	10-Oct-15	19-Oct-15	100%	
Install precast culvert element by barge (5 nos.)	21	20-Oct-15	13-Nov-15	100%	
Concreting in-situ Top Slab and stich joint	12	14-Nov-15	27-Nov-15	0%	
Removal of temporary bulk head	18	28-Nov-15	18-Dec-15	0%	
CH000-150 Land Section					
ELS & Structure					
Pile A43/A41 CJ to Pile A41/A39 CJ					
Box Culvert Structure					
Pile cap construction	10	27-May-15	06-Jun-15	100%	
Base slab construction including kicker	6	19-Jun-15	26-Jun-15	100%	
Removal of strut S1	4	27-Jun-15	02-Jul-15	100%	
System formworks delivery & setup	14	03-Jul-15	18-Jul-15	100%	
Walls & top slab construction	6	20-Jul-15	25-Jul-15	100%	
Removal of strut S2 & Backfilling up to required level	6	03-Aug-15	08-Aug-15	0%	
Pile A45/A43 CJ to Pile A43/A41 CJ					
Box Culvert Structure					
Pile cap construction	10	08-Jun-15	18-Jun-15	100%	
Base slab construction including kicker	6	27-Jun-15	04-Jul-15	100%	
Removal of strut S1	4	06-Jul-15	09-Jul-15	100%	
Walls & top slab construction	6	27-Jul-15	01-Aug-15	100%	
Removal of strut S2 & Backfilling up to required level	6	10-Aug-15	15-Aug-15	0%	
Pile A47/A45 CJ to Pile A45/A43 CJ					
Box Culvert Structure					
Pile cap construction	10	19-Jun-15	02-Jul-15	100%	
Base slab construction including kicker	6	06-Jul-15	11-Jul-15	100%	
Removal of strut S1	4	13-Jul-15	16-Jul-15	100%	
Walls & top slab construction	6	03-Aug-15	08-Aug-15	100%	
Removal of strut S2 & Backfilling up to required level	6	17-Aug-15	22-Aug-15	100%	
Pile A49/A47 CJ to Pile A47/A45 CJ					
Box Culvert Structure					
Pile cap construction	10	03-Jul-15	14-Jul-15	100%	
Base slab construction including kicker	6	15-Jul-15	21-Jul-15	100%	
Removal of strut S1	4	22-Jul-15	25-Jul-15	100%	
Walls & top slab construction	6	10-Aug-15	15-Aug-15	100%	
Removal of strut S2 & Backfilling up to required level	6	24-Aug-15	29-Aug-15	100%	
Pile A52/A49 CJ to Pile A49/A47 CJ					
Box Culvert Structure					
Removal of strut S1	4	10-Aug-15	13-Aug-15	100%	
Walls & top slab construction	6	17-Aug-15	22-Aug-15	100%	
Removal of strut S2 & Backfilling up to required level	6	31-Aug-15	05-Sep-15	100%	
Preparation for Temp Access Road for N8 handvoer	24	07-Sep-15	06-Oct-15	100%	
Ch150-250 Marine Section					
ELS & Structure					
Dewatering well installation Ch180-250	12	19-Jun-15	04-Jul-15	100%	
Dewatering well installation Ch100-180	12	06-Jul-15	18-Jul-15	100%	
1st Pumping test	18	20-Jul-15	08-Aug-15	100%	
Toe grouting Ch100-250	95	07-Sep-15	31-Dec-15	94%	

- Planned Bar
- Planned Bar - Critical
- ◆ Planned Milestone
- Progress bar
- ◆ Progress Milestone

TMCLK - Northern Connection Sub-Sea Tunnel Section
 Detailed Works Programme (Rev. F)
 Three Months Rolling Programme
 Progress as of 31-Aug-16



Date	Revision	Checked	Approved
12-Feb-14	TMCLKDBJGEN-PRG08507	WYu	SPo
08-Apr-14	TMCLKDBJGEN-PRG08507 Rev. B	SPa	WYu
28-Aug-14	TMCLKDBJGEN-PRG08507 Rev. C	CLa	WYu
30-Oct-15	TMCLKDBJGEN-PRG08507 Rev. F	WYu	

Activity Name	Orig Dur	DWPF Start	DWPF Finish	% Comp	2016											
					May	Jun	Jul	Aug	Sep	Oct	Nov	Dec				
2nd Pumping test Ch100-250	29	02-Jan-16	04-Feb-16	0%												
Pile A41/A39 CJ to Pile A39/A37 CJ																
ELS																
Excavation to 0.5m below strut S2	4	05-Feb-16	16-Feb-16	0%												
Installation of strut S2	6	17-Feb-16	23-Feb-16	0%												
Excavation to 0.5m below strut S1	5	24-Feb-16	29-Feb-16	0%												
Installation of strut S1	5	01-Mar-16	05-Mar-16	0%												
Excavation to FEL	5	07-Mar-16	11-Mar-16	0%												
Box Culvert Structure																
Pile cap construction	10	18-Mar-16	01-Apr-16	0%												
Sliding formworks 1st assembly	18	27-Apr-16	19-May-16	0%												
Walls & top slab construction	6	20-May-16	26-May-16	0%												
Removal of strut S2 & Backfilling up to required level	6	03-Jun-16	10-Jun-16	0%												
Pile A39/A37 CJ to Pile A37/A35 CJ																
ELS																
Excavation to 0.5m below strut S2	4	17-Feb-16	20-Feb-16	0%												
Installation of strut S2	6	22-Feb-16	27-Feb-16	0%												
Excavation to 0.5m below strut S1	5	01-Mar-16	05-Mar-16	0%												
Installation of strut S1	5	07-Mar-16	11-Mar-16	0%												
Excavation to FEL	5	12-Mar-16	17-Mar-16	0%												
Box Culvert Structure																
Removal of strut S1	4	29-Apr-16	04-May-16	0%												
Walls & top slab construction	6	27-May-16	02-Jun-16	0%												
Removal of strut S2 & Backfilling up to required level	6	11-Jun-16	17-Jun-16	0%												
Pile A37/A35 CJ to Pile A35/A33 CJ																
ELS																
Excavation to 0.5m below strut S2	4	22-Feb-16	25-Feb-16	0%												
Installation of strut S2	6	26-Feb-16	03-Mar-16	0%												
Excavation to 0.5m below strut S1	5	07-Mar-16	11-Mar-16	0%												
Installation of strut S1	5	12-Mar-16	17-Mar-16	0%												
Excavation to FEL	5	18-Mar-16	23-Mar-16	0%												
Box Culvert Structure																
Base slab construction including kicker	6	29-Apr-16	06-May-16	0%												
Removal of strut S1	4	07-May-16	11-May-16	0%												
Walls & top slab construction	6	03-Jun-16	10-Jun-16	0%												
Removal of strut S2 & Backfilling up to required level	6	18-Jun-16	24-Jun-16	0%												
Pile A35/A33 CJ to Pile A33/P117 CJ																
ELS																
Excavation to 0.5m below strut S2	4	26-Feb-16	01-Mar-16	0%												
Installation of strut S2	6	02-Mar-16	08-Mar-16	0%												
Excavation to 0.5m below strut S1	5	12-Mar-16	17-Mar-16	0%												
Installation of strut S1	5	18-Mar-16	23-Mar-16	0%												
Excavation to FEL	5	24-Mar-16	01-Apr-16	0%												
Box Culvert Structure																
Pile cap construction	10	27-Apr-16	09-May-16	0%												
Base slab construction including kicker	6	10-May-16	17-May-16	0%												
Removal of strut S1	4	18-May-16	21-May-16	0%												
Walls & top slab construction	6	11-Jun-16	17-Jun-16	0%												
Removal of strut S2 & Backfilling up to required level	6	25-Jun-16	02-Jul-16	0%												
Pile A33/P117 CJ to Pile P113/P109 CJ																
ELS																
Excavation to 0.5m below strut S1	9	09-Mar-16	18-Mar-16	0%												
Installation of strut S1	5	19-Mar-16	24-Mar-16	0%												
Box Culvert Structure																
Base slab construction including kicker	6	18-May-16	24-May-16	0%												
Removal of strut S1	4	25-May-16	28-May-16	0%												
Walls & top slab construction	6	18-Jun-16	24-Jun-16	0%												
Removal of strut S2 & Backfilling up to required level	6	04-Jul-16	09-Jul-16	0%												
Pile P113/P109 CJ to Pile P105/P101 CJ																
ELS																
Excavation to 0.5m below strut S1	9	17-Mar-16	30-Mar-16	0%												
Installation of strut S1	5	31-Mar-16	06-Apr-16	0%												
Box Culvert Structure																
Base slab construction including kicker	6	25-May-16	31-May-16	0%												
Removal of strut S1	4	01-Jun-16	04-Jun-16	0%												
Walls & top slab construction	6	25-Jun-16	02-Jul-16	0%												
Removal of strut S2 & Backfilling up to required level	6	11-Jul-16	16-Jul-16	0%												
Pile P105/P101 CJ to Pile P97/P93 CJ																
ELS																
Excavation to 0.5m below strut S1	9	29-Mar-16	08-Apr-16	0%												
Box Culvert Structure																
Base slab construction including kicker	6	01-Jun-16	07-Jun-16	0%												
Removal of strut S1	4	08-Jun-16	13-Jun-16	0%												
Walls & top slab construction	6	04-Jul-16	09-Jul-16	0%												
Removal of strut S2 & Backfilling up to required level	6	18-Jul-16	23-Jul-16	0%												
Pile P97/P93 CJ to Pile P89/P85 CJ																
ELS																
Excavation to 0.5m below strut S1	9	07-Apr-16	16-Apr-16	0%												
Box Culvert Structure																
Base slab construction including kicker	6	08-Jun-16	15-Jun-16	0%												
Removal of strut S1	4	16-Jun-16	20-Jun-16	0%												
Walls & top slab construction	6	11-Jul-16	16-Jul-16	0%												
Removal of strut S2 & Backfilling up to required level	6	25-Jul-16	30-Jul-16	0%												
Pile P89/P85 CJ to Pile P81/P77 CJ																

- Planned Bar
- Planned Bar - Critical
- ◆ Planned Milestone
- Progress bar
- ◆ Progress Milestone

TMCLK - Northern Connection Sub-Sea Tunnel Section
 Detailed Works Programme (Rev. F)
 Three Months Rolling Programme
 Progress as of 31-Aug-16



Date	Revision	Checked	Approved
12-Feb-14	TMCLKDBJGEN-PRG98507	WYu	SPo
08-Apr-14	TMCLKDBJGEN-PRG98507 Rev. B	SPa	WYu
28-Aug-14	TMCLKDBJGEN-PRG98507 Rev. C	CLa	WYu
30-Oct-15	TMCLKDBJGEN-PRG98507 Rev. F	WYu	

Activity Name	Orig Dur	DWPF Start	DWPF Finish	% Comp	2016											
					May	Jun	Jul	Aug	Sep	Oct	Nov	Dec				
ELS																
Excavation to 0.5m below strut S1	9	15-Apr-16	25-Apr-16	100%	Excavation to 0.5m below strut S1											
Installation of strut S1	5	26-Apr-16	30-Apr-16	100%	Installation of strut S1											
Excavation to FEL	5	03-May-16	07-May-16	0%	Excavation to FEL											
Box Culvert Structure																
Base slab construction including kicker	6	16-Jun-16	22-Jun-16	0%	Base slab construction including kicker											
Removal of strut S1	4	23-Jun-16	27-Jun-16	0%	Removal of strut S1											
Walls & top slab construction	6	18-Jul-16	23-Jul-16	0%	Walls & top slab construction											
Removal of strut S2 & Backfilling up to required level	6	01-Aug-16	06-Aug-16	0%	Removal of strut S2 & Backfilling up to required level											
Pile P81/P77 CJ to Pile P73/P69 CJ																
ELS																
Excavation to 0.5m below strut S1	9	23-Apr-16	04-May-16	100%	Excavation to 0.5m below strut S1											
Installation of strut S1	5	05-May-16	10-May-16	100%	Installation of strut S1											
Excavation to FEL	5	11-May-16	17-May-16	0%	Excavation to FEL											
Box Culvert Structure																
Base slab construction including kicker	6	23-Jun-16	29-Jun-16	0%	Base slab construction including kicker											
Removal of strut S1	4	30-Jun-16	05-Jul-16	0%	Removal of strut S1											
Walls & top slab construction	6	25-Jul-16	30-Jul-16	0%	Walls & top slab construction											
Removal of strut S2 & Backfilling up to required level	6	08-Aug-16	13-Aug-16	0%	Removal of strut S2 & Backfilling up to required level											
Ch250-380 Marine Section																
Installation of Dewatering & Observation Well Ch 250-380	23	04-Nov-15	30-Nov-15	0%	Installation of Dewatering & Observation Well Ch 250-380											
1st Pumping Test & Analysis	17	01-Dec-15	19-Dec-15	0%	1st Pumping Test & Analysis											
Toe Grouting	106	21-Dec-15	07-May-16	0%	Toe Grouting											
2nd Pumping test & Analysis	25	08-Apr-16	07-May-16	0%	2nd Pumping test & Analysis											
Remaining toe grouting Ch250-380	51	09-May-16	09-Jul-16	0%	Remaining toe grouting Ch250-380											
Miscellaneous works																
Inspection Manhole (IM)																
Inspection Manhole IM-01 to IM-04 & backfilling to +6.0mPD	12	29-Sep-15	13-Oct-15	0%	Inspection Manhole IM-01 to IM-04 & backfilling to +6.0mPD											
Inspection Manhole IM-05 to IM-08 & backfilling to +6.0mPD	18	15-Aug-16	03-Sep-16	0%	Inspection Manhole IM-05 to IM-08 & backfilling to +6.0mPD											
Inspection Manhole IM-09 to IM-12 & backfilling to +6.0mPD	18	20-Oct-16	09-Nov-16	0%	Inspection Manhole IM-09 to IM-12 & backfilling to +6.0mPD											
Stop Log Opening (SLO)																
SLO-01 to SLO-05 & backfilling to +6.0mPD	24	14-Oct-15	11-Nov-15	0%	SLO-01 to SLO-05 & backfilling to +6.0mPD											
Balance Hole (BH)																
BH-01 to BH-03 & backfilling to +6.0mPD	18	07-Sep-15	26-Sep-15	0%	BH-01 to BH-03 & backfilling to +6.0mPD											
BH-04 to BH-06 & backfilling to +6.0mPD	18	05-Sep-16	26-Sep-16	0%	BH-04 to BH-06 & backfilling to +6.0mPD											
Desilting Opening (DO)																
DO-01 to DO-04 & backfilling to +6.0mPD	18	27-Sep-16	19-Oct-16	0%	DO-01 to DO-04 & backfilling to +6.0mPD											
North Launching Shaft																
Design Submission																
(C1) DDA for North C&C Tunnel Permanent Structure																
SO's Review	35	24-May-14	27-Jun-14	90%	SO's Review											
SO Approval with Condition Received	0		27-Jun-14	0%	SO Approval with Condition Received											
(C1) DDA for North Approach Ramp Permanent Structure																
IPs Review	28	23-Oct-14	19-Nov-14	92%	IPs Review											
IP's No Objection Received	0		19-Nov-14	0%	IP's No Objection Received											
SO's Review	35	23-Oct-14	26-Nov-14	91%	SO's Review											
SO Approval with Condition Received	0		26-Nov-14	0%	SO Approval with Condition Received											
North Ventilation Shaft																
Construction																
North Ventilation Shaft Structure																
NVS - ML03 Tunnel Structure	47	24-May-16	20-Jul-16	0%	NVS - ML03 Tunnel Structure											
NVS - ML02 Tunnel Structure	44	05-Apr-16	27-May-16	22%	NVS - ML02 Tunnel Structure											
TMCLK VO-008 - Construction of Viaduct Foundations at Portion N6A																
Viaduct Pile Cap																
Construction																
Pier G1c																
Pile Cap G1c - Preparation for ELS	6	24-Oct-14	30-Oct-14	0%	Pile Cap G1c - Preparation for ELS											
Pile Cap G1c - Removal of Existing ground slab	6	31-Oct-14	06-Nov-14	0%	Pile Cap G1c - Removal of Existing ground slab											
Pile Cap G1c - Excavation & ELS Installation	12	07-Nov-14	20-Nov-14	0%	Pile Cap G1c - Excavation & ELS Installation											
Pile Cap G1c - Blinding Concrete	3	21-Nov-14	24-Nov-14	0%	Pile Cap G1c - Blinding Concrete											
Pile Cap G1c - Rebar & Concreting	18	25-Nov-14	15-Dec-14	0%	Pile Cap G1c - Rebar & Concreting											
Pile Cap G1c - Backfilling & Temp Reinstatement	6	16-Dec-14	22-Dec-14	0%	Pile Cap G1c - Backfilling & Temp Reinstatement											
Pier H1c																
Pile Cap H1c - Preparation for ELS	6	02-Nov-15	07-Nov-15	0%	Pile Cap H1c - Preparation for ELS											
Pile Cap H1c - Removal of Existing ground slab	6	09-Nov-15	14-Nov-15	0%	Pile Cap H1c - Removal of Existing ground slab											
Pile Cap H1c - Excavation & ELS Installation	12	16-Nov-15	28-Nov-15	0%	Pile Cap H1c - Excavation & ELS Installation											
North Approach TBM Tunnelling & Cross Passage																
Construction																
North Approach Tunnel Internal Structure - NB																
NB - North TBM Tunnel - Invert Backfilling (Ch6688 to 6560 - 128m) Stage 1	54	01-Apr-16	26-May-16	100%	NB - North TBM Tunnel - Invert Backfilling (Ch6688 to 6560 - 128m) Stage 1											
NB - North TBM Tunnel - Invert Precast Gallery Installation (Ch6870 to 6688 - 182m)	77	29-Dec-15	18-Mar-16	100%	NB - North TBM Tunnel - Invert Precast Gallery Installation (Ch6870 to 6688 - 182m)											
NB - North TBM Tunnel - Invert Precast Gallery Installation (Ch6688 to 6560 - 128m)	54	13-Apr-16	07-Jun-16	100%	NB - North TBM Tunnel - Invert Precast Gallery Installation (Ch6688 to 6560 - 128m)											
NB - North TBM Tunnel - Invert Backfilling (Ch6688 to 6560 - 128m) Stage 2	54	28-Apr-16	23-Jun-16	100%	NB - North TBM Tunnel - Invert Backfilling (Ch6688 to 6560 - 128m) Stage 2											
CP55 - Excavation & Lining completion	0		14-Jun-16	0%	CP55 - Excavation & Lining completion											
CP54 - Excavation & Lining completion	0		31-Aug-16	0%	CP54 - Excavation & Lining completion											
CP52 - Excavation & Lining completion	0		22-Apr-16	100%	CP52 - Excavation & Lining completion											
CP50 - Excavation & Lining completion	0		26-Jul-16	0%	CP50 - Excavation & Lining completion											
NB - North TBM Tunnel - Corbel & Cable Trough installation	42	31-Aug-16	22-Oct-16	0%	NB - North TBM Tunnel - Corbel & Cable Trough installation											
NB - North TBM Tunnel - OHVD Slab installation	42	07-Sep-16	29-Oct-16	0%	NB - North TBM Tunnel - OHVD Slab installation											
NB - North TBM Tunnel - Fire proofing and Provision to E&MS and TCSS Contract for KD1	42	14-Sep-16	05-Nov-16	0%	NB - North TBM Tunnel - Fire proofing and Provision to E&MS and TCSS Contract for KD1											
North Approach Tunnel Internal Structure - SB																
SB - North TBM Tunnel - Invert Backfilling (Ch6688 to 6560 - 128m)	54	21-Mar-16	18-May-16	100%	SB - North TBM Tunnel - Invert Backfilling (Ch6688 to 6560 - 128m)											
SB - North TBM Tunnel - Corbel & Cable Trough installation	42	22-Oct-16	10-Dec-16	0%	SB - North TBM Tunnel - Corbel & Cable Trough installation											
SB - North TBM Tunnel - OHVD Slab installation	42	29-Oct-16	17-Dec-16	0%	SB - North TBM Tunnel - OHVD Slab installation											

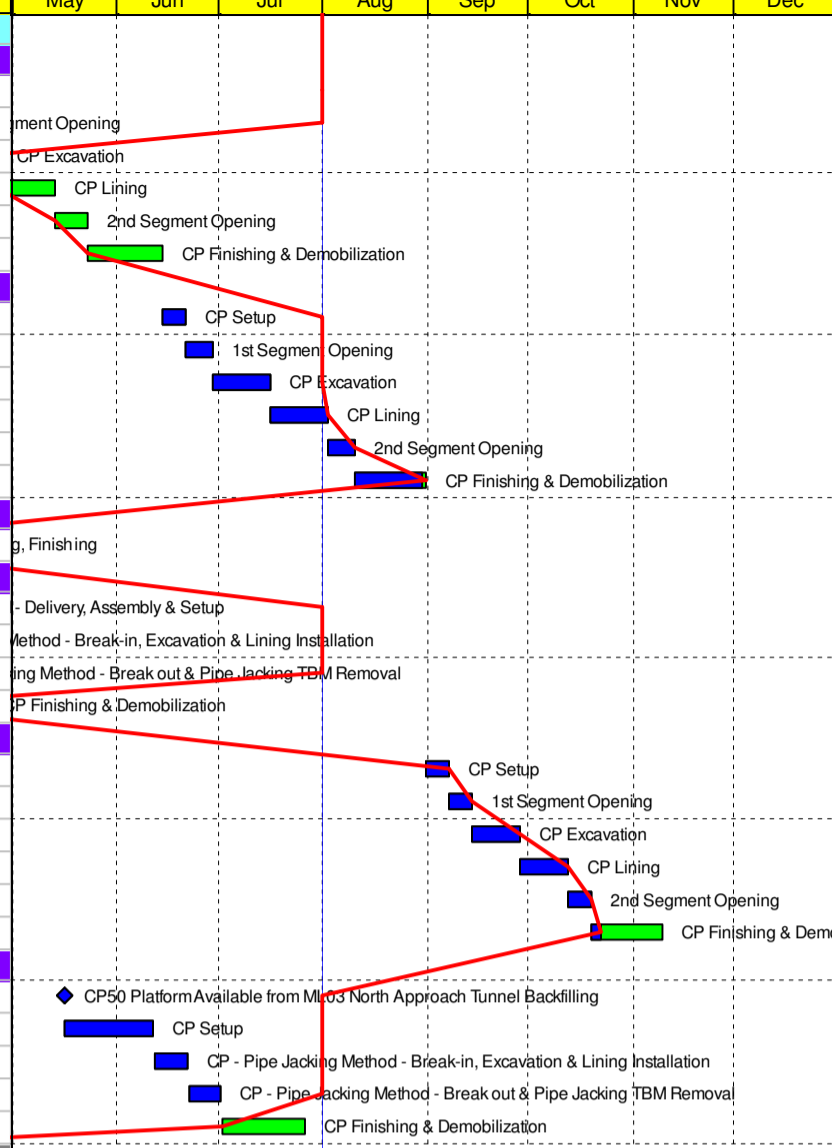
Legend:

- Planned Bar
- Planned Bar - Critical
- Planned Milestone
- Progress bar
- Progress Milestone



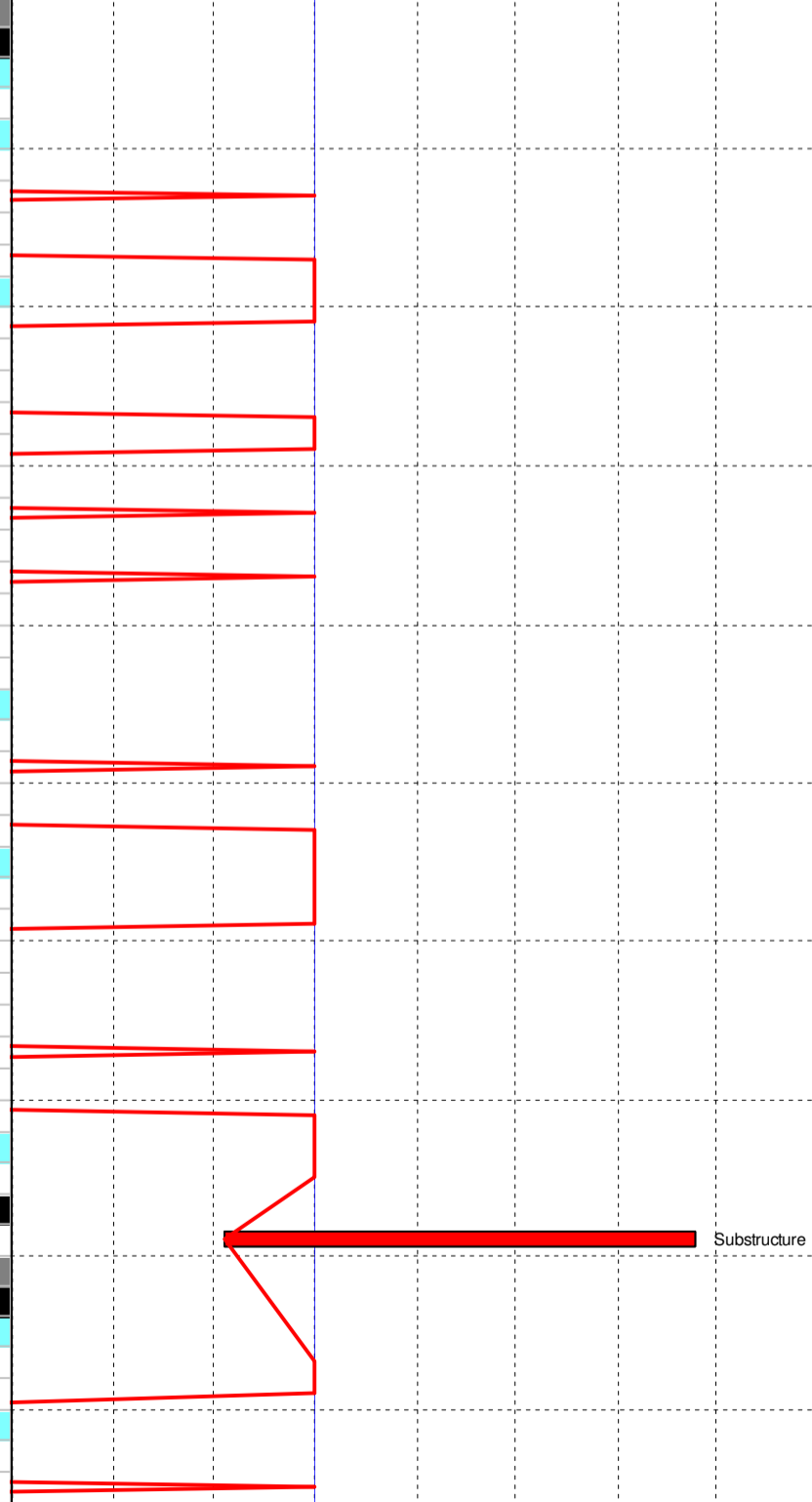
Date	Revision	Checked	Approved
12-Feb-14	TMCLKDBJGEN-PRG98507	WYu	SPo
08-Apr-14	TMCLKDBJGEN-PRG98507 Rev. B	SPa	WYu
28-Aug-14	TMCLKDBJGEN-PRG98507 Rev. C	CLA	WYu
30-Oct-15	TMCLKDBJGEN-PRG98507 Rev. F	WYu	

Activity Name	Orig Dur	DWPF Start	DWPF Finish	% Comp
North Approach Cross Passage				
CP55 - Traditional Method				
CP Setup	6	21-Mar-16	31-Mar-16	100%
1st Segment Opening	7	31-Mar-16	09-Apr-16	100%
CP Excavation	14	09-Apr-16	26-Apr-16	88%
CP Lining	14	26-Apr-16	13-May-16	0%
2nd Segment Opening	7	13-May-16	23-May-16	0%
CP Finishing & Demobilization	18	23-May-16	14-Jun-16	0%
CP54 - Traditional Method				
CP Setup	6	14-Jun-16	21-Jun-16	100%
1st Segment Opening	7	21-Jun-16	29-Jun-16	100%
CP Excavation	14	29-Jun-16	16-Jul-16	100%
CP Lining	14	16-Jul-16	02-Aug-16	100%
2nd Segment Opening	7	02-Aug-16	10-Aug-16	100%
CP Finishing & Demobilization	18	10-Aug-16	31-Aug-16	100%
CP53 - Pipe Jacking Method				
CP - Waterproofing, Finishing	21	20-Feb-16	16-Mar-16	40%
CP52 - Pipe Jacking Method				
CP - Pipe Jacking TBM - Delivery, Assembly & Setup	23	01-Feb-16	05-Mar-16	100%
CP - Pipe Jacking Method - Break-in, Excavation & Lining Installation	9	05-Mar-16	14-Mar-16	100%
CP - Pipe Jacking Method - Break out & Pipe Jacking TBM Removal	10	14-Mar-16	24-Mar-16	100%
CP Finishing & Demobilization	21	24-Mar-16	22-Apr-16	0%
CP51 - Traditional Method				
CP Setup	6	31-Aug-16	07-Sep-16	100%
1st Segment Opening	7	07-Sep-16	14-Sep-16	100%
CP Excavation	14	14-Sep-16	28-Sep-16	100%
CP Lining	14	28-Sep-16	12-Oct-16	100%
2nd Segment Opening	7	12-Oct-16	19-Oct-16	100%
CP Finishing & Demobilization	18	19-Oct-16	09-Nov-16	20%
CP50 - Pipe Jacking Method				
CP50 Platform Available from ML03 North Approach Tunnel Backfilling	0	16-May-16		100%
CP Setup	23	16-May-16	11-Jun-16	100%
CP - Pipe Jacking Method - Break-in, Excavation & Lining Installation	9	12-Jun-16	21-Jun-16	100%
CP - Pipe Jacking Method - Break out & Pipe Jacking TBM Removal	10	22-Jun-16	01-Jul-16	100%
CP Finishing & Demobilization	21	02-Jul-16	26-Jul-16	0%



North Ventilation Building				
Design Submission				
(A11) Submissions to Design Advisory Panel of ArchSD				
ArchSD's comment	30	10-Jun-14	09-Jul-14	93%
(I1) DDA for North Vent.Bldgs. GBP & Arch.Submission				
IPs Review	28	21-Aug-14	17-Sep-14	92%
IP's No Objection Received	0		17-Sep-14	0%
SO's Review	35	21-Aug-14	24-Sep-14	94%
SO Approval with Condition Received	0		24-Sep-14	0%
(I1) DDA for North & South Vent.Bldg. ABWF works				
Preparation of DDANorth & South ABWF	18	25-Sep-14	17-Oct-14	100%
Review & Comment by JV	24	18-Oct-14	14-Nov-14	91%
Designer prepare DDA	15	15-Nov-14	02-Dec-14	0%
Formal Submission of DDA to ICE/ IPs	0		02-Dec-14	0%
Advanced Submission to SO	0		02-Dec-14	0%
IPs/ SO's Advance Comments/ ICE Comments	28	03-Dec-14	30-Dec-14	0%
Comments Received	0		30-Dec-14	0%
Designer to Reply RIC + Update Submission	21	31-Dec-14	24-Jan-15	0%
Submit Updated DDA to SO/ ICE/ IPs	0	26-Jan-15		0%
ICE Approval & Issue Check Cert	18	26-Jan-15	14-Feb-15	0%
IPs Review	28	26-Jan-15	22-Feb-15	0%
SO's Review	35	26-Jan-15	01-Mar-15	0%
(I2) DDA for North Vent.Bldgs.Structural Design incl.Vent.Connections				
IPs Review	28	24-Dec-14	20-Jan-15	92%
IP's No Objection Received	0		20-Jan-15	0%
SO's Review	35	24-Dec-14	27-Jan-15	92%
SO Approval with Condition Received	0		27-Jan-15	0%
(I3) DDA for North & South Vent.Bldgs. Service and E&M Provision				
Designer to Reply RIC + Update Submission	21	18-Dec-14	14-Jan-15	100%
Submit Updated DDA to SO/ ICE/ IPs	0	15-Jan-15		100%
ICE Approval & Issue Check Cert	12	15-Jan-15	28-Jan-15	0%
Submit ICE Check Cert to SO	6	29-Jan-15	04-Feb-15	0%
IPs Review	28	15-Jan-15	11-Feb-15	92%
IP's No Objection Received	0		11-Feb-15	0%
SO's Review	35	15-Jan-15	18-Feb-15	91%
SO Approval with Condition Received	0		18-Feb-15	0%
(C3) DDA for North Vent Shaft & Duct Permanent Structure				
ICE Approval & Issue Check Cert	12	22-Nov-14	05-Dec-14	100%

Construction				
Substructure	120	04-Jul-16	24-Nov-16	0%
North Surface Roadworks, Utility & Drainage works				
Design Submission				
(A20) DDA for Traffic Sign, Road Marking, Street Furnitures, Sign Gantry & etc				
SO's Review	35	11-Dec-14	14-Jan-15	100%
SO Approval with Condition Received	0		14-Jan-15	100%
(C2) DDA for Sewerage, Drainage, Waterworks & Utility works for North Landfall				
IPs Review	28	08-Nov-14	05-Dec-14	92%
IP's No Objection Received	0		05-Dec-14	0%



- Planned Bar
- Planned Bar - Critical
- ◆ Planned Milestone
- Progress bar
- ◆ Progress Milestone

TMCLK - Northern Connection Sub-Sea Tunnel Section
 Detailed Works Programme (Rev. F)
 Three Months Rolling Programme
 Progress as of 31-Aug-16



Date	Revision	Checked	Approved
12-Feb-14	TMCLKDBJGEN-PRG08507	WYu	SPo
08-Apr-14	TMCLKDBJGEN-PRG08507 Rev. B	SPa	WYu
28-Aug-14	TMCLKDBJGEN-PRG08507 Rev. C	CLA	WYu
30-Oct-15	TMCLKDBJGEN-PRG08507 Rev. F	WYu	

Activity Name	Orig Dur	DWPF Start	DWPF Finish	% Comp	2016											
					May	Jun	Jul	Aug	Sep	Oct	Nov	Dec				
SB - Sub-sea TBM Tunnel - Precast Invert Gallery - Completion to CP39	9	13-Jul-16	23-Jul-16	89%												
SB - Sub-sea TBM Tunnel - Precast Invert Gallery - Completion to CP38	7	23-Jul-16	30-Jul-16	0%												
SB - Sub-sea TBM Tunnel - Precast Invert Gallery - Completion to CP37	8	30-Jul-16	07-Aug-16	0%												
SB - Sub-sea TBM Tunnel - Precast Invert Gallery - Completion to CP36	8	07-Aug-16	16-Aug-16	0%												
SB - Sub-sea TBM Tunnel - Precast Invert Gallery - Completion to CP35	7	16-Aug-16	23-Aug-16	0%												
SB - Sub-sea TBM Tunnel - Precast Invert Gallery - Completion to CP34	7	23-Aug-16	30-Aug-16	0%												
SB - Sub-sea TBM Tunnel - Precast Invert Gallery - Completion to CP33	16	30-Aug-16	15-Sep-16	0%												
SB - Sub-sea TBM Tunnel - Precast Invert Gallery - Completion to CP32	6	15-Sep-16	21-Sep-16	0%												
SB - Sub-sea TBM Tunnel - Precast Invert Gallery - Completion to CP31	10	21-Sep-16	01-Oct-16	0%												
SB - Sub-sea TBM Tunnel - Precast Invert Gallery - Completion to CP30	7	01-Oct-16	08-Oct-16	0%												
SB - Sub-sea TBM Tunnel - Precast Invert Gallery - Completion to CP29	6	08-Oct-16	14-Oct-16	0%												
SB - Sub-sea TBM Tunnel - Precast Invert Gallery - Completion to CP28	11	14-Oct-16	25-Oct-16	0%												
SB - Sub-sea TBM Tunnel - Precast Invert Gallery - Completion to CP27	6	25-Oct-16	31-Oct-16	0%												

Sub-sea Tunnel Cross Passage & Internal Structure

Design Submission

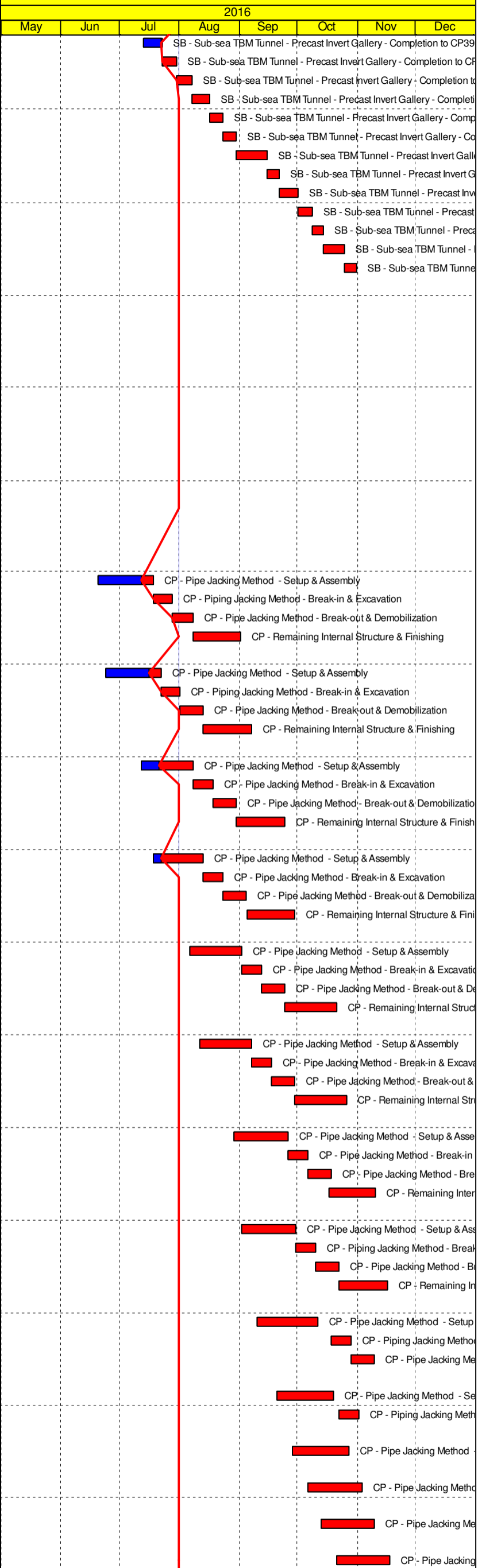
(G4) DDA for Cross Passage - Permanent works - incl. Geotechnical Assessment - Sub-sea tunnel

IPs/SO's Advance Comments/ICE Comments	28	21-Dec-14	17-Jan-15	100%
Comments Received	0		17-Jan-15	100%
Designer to Reply RfC + Update Submission	21	19-Jan-15	11-Feb-15	100%
Submit Updated DDA to SO/ICE/IPs	0	12-Feb-15		100%
ICE Approval & Issue Check Cert	12	12-Feb-15	04-Mar-15	100%
Submit ICE Check Cert to SO	6	05-Mar-15	11-Mar-15	100%
IPs Review	28	12-Feb-15	11-Mar-15	100%
IP's No Objection Received	0		11-Mar-15	100%
SO's Review	35	12-Feb-15	18-Mar-15	100%
SO Approval with Condition Received	0		18-Mar-15	100%

Construction

Sub-sea Tunnel Cross Passage

CP48 - ML03 - Ch6489				
CP - Pipe Jacking Method - Setup & Assembly	23	20-Jun-16	18-Jul-16	43%
CP - Piping Jacking Method - Break-in & Excavation	10	18-Jul-16	28-Jul-16	0%
CP - Pipe Jacking Method - Break-out & Demobilization	11	28-Jul-16	08-Aug-16	0%
CP - Remaining Internal Structure & Finishing	21	08-Aug-16	01-Sep-16	0%
CP47 - ML03 - Ch6390				
CP - Pipe Jacking Method - Setup & Assembly	23	24-Jun-16	22-Jul-16	43%
CP - Piping Jacking Method - Break-in & Excavation	10	22-Jul-16	01-Aug-16	0%
CP - Pipe Jacking Method - Break-out & Demobilization	12	01-Aug-16	13-Aug-16	0%
CP - Remaining Internal Structure & Finishing	21	13-Aug-16	07-Sep-16	0%
CP46 - ML03 - Ch6292				
CP - Pipe Jacking Method - Setup & Assembly	23	12-Jul-16	08-Aug-16	35%
CP - Pipe Jacking Method - Break-in & Excavation	10	08-Aug-16	18-Aug-16	0%
CP - Pipe Jacking Method - Break-out & Demobilization	12	18-Aug-16	30-Aug-16	0%
CP - Remaining Internal Structure & Finishing	21	30-Aug-16	24-Sep-16	0%
CP45 - ML03 - Ch6193				
CP - Pipe Jacking Method - Setup & Assembly	23	18-Jul-16	13-Aug-16	17%
CP - Pipe Jacking Method - Break-in & Excavation	10	13-Aug-16	23-Aug-16	0%
CP - Pipe Jacking Method - Break-out & Demobilization	12	23-Aug-16	04-Sep-16	0%
CP - Remaining Internal Structure & Finishing	21	05-Sep-16	29-Sep-16	0%
CP44 - ML03 - Ch6095				
CP - Pipe Jacking Method - Setup & Assembly	23	06-Aug-16	02-Sep-16	0%
CP - Pipe Jacking Method - Break-in & Excavation	10	02-Sep-16	12-Sep-16	0%
CP - Pipe Jacking Method - Break-out & Demobilization	12	12-Sep-16	24-Sep-16	0%
CP - Remaining Internal Structure & Finishing	21	24-Sep-16	21-Oct-16	0%
CP43 - ML03 - Ch5996				
CP - Pipe Jacking Method - Setup & Assembly	23	11-Aug-16	07-Sep-16	0%
CP - Pipe Jacking Method - Break-in & Excavation	10	07-Sep-16	17-Sep-16	0%
CP - Pipe Jacking Method - Break-out & Demobilization	12	17-Sep-16	29-Sep-16	0%
CP - Remaining Internal Structure & Finishing	21	29-Sep-16	26-Oct-16	0%
CP42 - ML03 - Ch5898				
CP - Pipe Jacking Method - Setup & Assembly	23	29-Aug-16	26-Sep-16	0%
CP - Pipe Jacking Method - Break-in & Excavation	10	26-Sep-16	06-Oct-16	0%
CP - Pipe Jacking Method - Break-out & Demobilization	12	06-Oct-16	18-Oct-16	0%
CP - Remaining Internal Structure & Finishing	21	17-Oct-16	10-Nov-16	0%
CP41 - ML03 - Ch5800				
CP - Pipe Jacking Method - Setup & Assembly	23	02-Sep-16	30-Sep-16	0%
CP - Piping Jacking Method - Break-in & Excavation	10	30-Sep-16	10-Oct-16	0%
CP - Pipe Jacking Method - Break-out & Demobilization	12	10-Oct-16	22-Oct-16	0%
CP - Remaining Internal Structure & Finishing	21	22-Oct-16	16-Nov-16	0%
CP40 - ML03 - Ch5703				
CP - Pipe Jacking Method - Setup & Assembly	23	10-Sep-16	11-Oct-16	0%
CP - Piping Jacking Method - Break-in & Excavation	10	18-Oct-16	28-Oct-16	0%
CP - Pipe Jacking Method - Break-out & Demobilization	12	28-Oct-16	09-Nov-16	0%
CP39 - ML03 - Ch5607				
CP - Pipe Jacking Method - Setup & Assembly	23	20-Sep-16	19-Oct-16	0%
CP - Piping Jacking Method - Break-in & Excavation	10	22-Oct-16	01-Nov-16	0%
CP38 - ML03 - Ch5510				
CP - Pipe Jacking Method - Setup & Assembly	23	28-Sep-16	27-Oct-16	0%
CP37 - ML03 - Ch5413				
CP - Pipe Jacking Method - Setup & Assembly	23	06-Oct-16	03-Nov-16	0%
CP36 - ML03 - Ch5315				
CP - Pipe Jacking Method - Setup & Assembly	23	13-Oct-16	09-Nov-16	0%
CP35 - ML03 - Ch5217				
CP - Pipe Jacking Method - Setup & Assembly	23	21-Oct-16	17-Nov-16	0%



- Planned Bar
- Planned Bar - Critical
- ◆ Planned Milestone
- Progress bar
- ◆ Progress Milestone

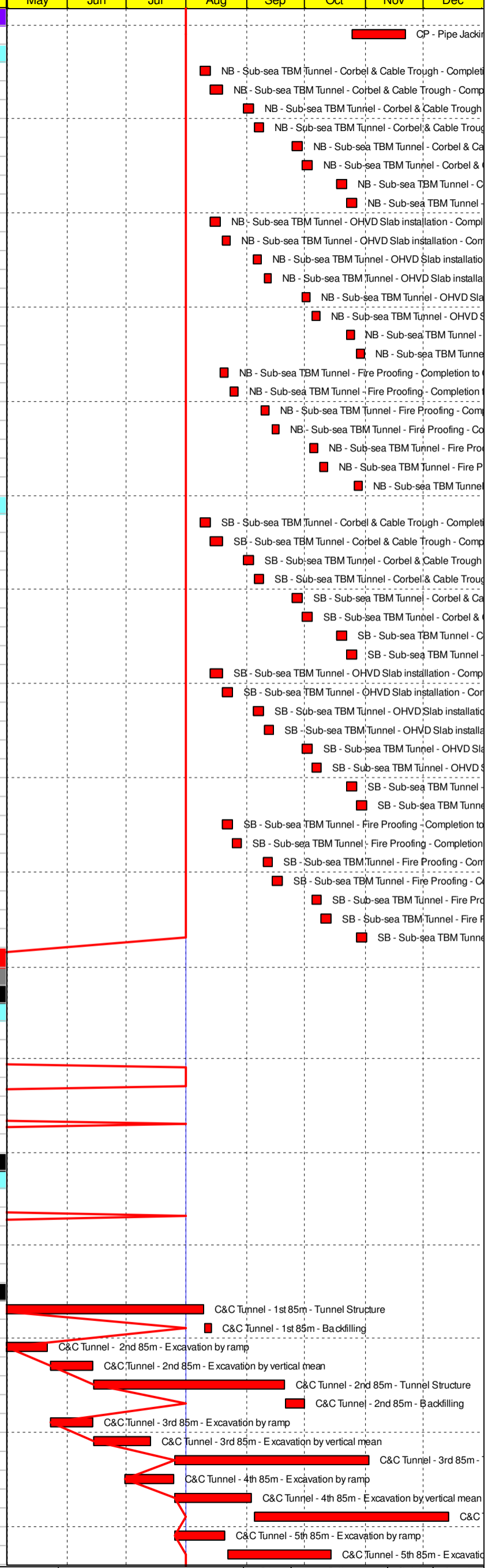


Date	Revision	Checked	Approved
12-Feb-14	TMCLKDBJGEN-PRG08507	WYu	SPo
08-Apr-14	TMCLKDBJGEN-PRG08507 Rev. B	SPa	WYu
28-Aug-14	TMCLKDBJGEN-PRG08507 Rev. C	CLa	WYu
30-Oct-15	TMCLKDBJGEN-PRG08507 Rev. F	WYu	

CP34 - ML03 - Ch5118				
CP - Pipe Jacking Method - Setup & Assembly	23	25-Oct-16	21-Nov-16	0%
Sub-sea TBM Tunnel - NB - Remaining Internal Structure				
NB - Sub-sea TBM Tunnel - Corbel & Cable Trough - Completion to CP48	5	08-Aug-16	13-Aug-16	0%
NB - Sub-sea TBM Tunnel - Corbel & Cable Trough - Completion to CP47	5	13-Aug-16	19-Aug-16	0%
NB - Sub-sea TBM Tunnel - Corbel & Cable Trough - Completion to CP46	5	30-Aug-16	04-Sep-16	0%
NB - Sub-sea TBM Tunnel - Corbel & Cable Trough - Completion to CP45	5	05-Sep-16	09-Sep-16	0%
NB - Sub-sea TBM Tunnel - Corbel & Cable Trough - Completion to CP44	5	24-Sep-16	29-Sep-16	0%
NB - Sub-sea TBM Tunnel - Corbel & Cable Trough - Completion to CP43	5	29-Sep-16	04-Oct-16	0%
NB - Sub-sea TBM Tunnel - Corbel & Cable Trough - Completion to CP42	5	17-Oct-16	22-Oct-16	0%
NB - Sub-sea TBM Tunnel - Corbel & Cable Trough - Completion to CP41	5	22-Oct-16	27-Oct-16	0%
NB - Sub-sea TBM Tunnel - OHVD Slab installation - Completion to CP48	4	13-Aug-16	18-Aug-16	0%
NB - Sub-sea TBM Tunnel - OHVD Slab installation - Completion to CP47	4	19-Aug-16	23-Aug-16	0%
NB - Sub-sea TBM Tunnel - OHVD Slab installation - Completion to CP46	4	04-Sep-16	08-Sep-16	0%
NB - Sub-sea TBM Tunnel - OHVD Slab installation - Completion to CP45	4	10-Sep-16	13-Sep-16	0%
NB - Sub-sea TBM Tunnel - OHVD Slab installation - Completion to CP44	4	29-Sep-16	03-Oct-16	0%
NB - Sub-sea TBM Tunnel - OHVD Slab installation - Completion to CP43	4	04-Oct-16	08-Oct-16	0%
NB - Sub-sea TBM Tunnel - OHVD Slab installation - Completion to CP42	4	22-Oct-16	26-Oct-16	0%
NB - Sub-sea TBM Tunnel - OHVD Slab installation - Completion to CP41	4	27-Oct-16	31-Oct-16	0%
NB - Sub-sea TBM Tunnel - Fire Proofing - Completion to CP48	4	18-Aug-16	22-Aug-16	0%
NB - Sub-sea TBM Tunnel - Fire Proofing - Completion to CP47	4	23-Aug-16	27-Aug-16	0%
NB - Sub-sea TBM Tunnel - Fire Proofing - Completion to CP46	4	08-Sep-16	12-Sep-16	0%
NB - Sub-sea TBM Tunnel - Fire Proofing - Completion to CP45	4	14-Sep-16	17-Sep-16	0%
NB - Sub-sea TBM Tunnel - Fire Proofing - Completion to CP44	4	03-Oct-16	07-Oct-16	0%
NB - Sub-sea TBM Tunnel - Fire Proofing - Completion to CP43	4	08-Oct-16	12-Oct-16	0%
NB - Sub-sea TBM Tunnel - Fire Proofing - Completion to CP42	4	26-Oct-16	30-Oct-16	0%

Sub-sea TBM Tunnel - SB - Remaining Internal Structure				
SB - Sub-sea TBM Tunnel - Corbel & Cable Trough - Completion to CP48	5	08-Aug-16	13-Aug-16	0%
SB - Sub-sea TBM Tunnel - Corbel & Cable Trough - Completion to CP47	5	13-Aug-16	19-Aug-16	0%
SB - Sub-sea TBM Tunnel - Corbel & Cable Trough - Completion to CP46	5	30-Aug-16	04-Sep-16	0%
SB - Sub-sea TBM Tunnel - Corbel & Cable Trough - Completion to CP45	5	05-Sep-16	09-Sep-16	0%
SB - Sub-sea TBM Tunnel - Corbel & Cable Trough - Completion to CP44	5	24-Sep-16	29-Sep-16	0%
SB - Sub-sea TBM Tunnel - Corbel & Cable Trough - Completion to CP43	5	29-Sep-16	04-Oct-16	0%
SB - Sub-sea TBM Tunnel - Corbel & Cable Trough - Completion to CP42	5	17-Oct-16	22-Oct-16	0%
SB - Sub-sea TBM Tunnel - Corbel & Cable Trough - Completion to CP41	5	22-Oct-16	27-Oct-16	0%
SB - Sub-sea TBM Tunnel - OHVD Slab installation - Completion to CP48	5	13-Aug-16	19-Aug-16	0%
SB - Sub-sea TBM Tunnel - OHVD Slab installation - Completion to CP47	5	19-Aug-16	24-Aug-16	0%
SB - Sub-sea TBM Tunnel - OHVD Slab installation - Completion to CP46	5	04-Sep-16	09-Sep-16	0%
SB - Sub-sea TBM Tunnel - OHVD Slab installation - Completion to CP45	5	10-Sep-16	14-Sep-16	0%
SB - Sub-sea TBM Tunnel - OHVD Slab installation - Completion to CP44	5	29-Sep-16	04-Oct-16	0%
SB - Sub-sea TBM Tunnel - OHVD Slab installation - Completion to CP43	5	04-Oct-16	09-Oct-16	0%
SB - Sub-sea TBM Tunnel - OHVD Slab installation - Completion to CP42	5	22-Oct-16	27-Oct-16	0%
SB - Sub-sea TBM Tunnel - OHVD Slab installation - Completion to CP41	5	27-Oct-16	01-Nov-16	0%
SB - Sub-sea TBM Tunnel - Fire Proofing - Completion to CP48	5	19-Aug-16	24-Aug-16	0%
SB - Sub-sea TBM Tunnel - Fire Proofing - Completion to CP47	5	24-Aug-16	29-Aug-16	0%
SB - Sub-sea TBM Tunnel - Fire Proofing - Completion to CP46	5	09-Sep-16	14-Sep-16	0%
SB - Sub-sea TBM Tunnel - Fire Proofing - Completion to CP45	5	14-Sep-16	19-Sep-16	0%
SB - Sub-sea TBM Tunnel - Fire Proofing - Completion to CP44	5	04-Oct-16	09-Oct-16	0%
SB - Sub-sea TBM Tunnel - Fire Proofing - Completion to CP43	5	09-Oct-16	14-Oct-16	0%
SB - Sub-sea TBM Tunnel - Fire Proofing - Completion to CP42	5	27-Oct-16	01-Nov-16	0%

Southern Landfall				
South Cut & Cover Tunnel				
Design Submission				
(E2) DDA for South C&C Box & Approach Ramp				
Review & Comment by JV	18	09-Dec-14	31-Dec-14	88%
Designer prepare DDA	10	02-Jan-15	13-Jan-15	0%
Formal Submission of DDA to ICE/ IPs	0		13-Jan-15	0%
Advanced Submission to SO	0		13-Jan-15	0%
IPs/ SO's Advance Comments/ ICE Comments	28	14-Jan-15	10-Feb-15	0%
Comments Received	0		10-Feb-15	0%
Designer to Reply RIC + Update Submission	21	11-Feb-15	13-Mar-15	0%
Method Statement Submission				
Method Statement of Construction Methodology of C&C Tunnels				
Preparation Method Statement for C&C Tunnels	25	28-Mar-15	30-Apr-15	0%
Submit Method Statement to SO	0		30-Apr-15	0%
SO Reviews & Comments	28	01-May-15	28-May-15	0%
Re-submission	18	29-May-15	18-Jun-15	0%
SO's Review	28	19-Jun-15	16-Jul-15	0%
Construction				
C&C Tunnel - 1st 85m - Tunnel Structure	95	16-Apr-16	09-Aug-16	0%
C&C Tunnel - 1st 85m - Backfilling	4	10-Aug-16	13-Aug-16	0%
C&C Tunnel - 2nd 85m - Excavation by ramp	17	30-Apr-16	21-May-16	0%
C&C Tunnel - 2nd 85m - Excavation by vertical mean	18	23-May-16	13-Jun-16	0%
C&C Tunnel - 2nd 85m - Tunnel Structure	83	14-Jun-16	20-Sep-16	0%
C&C Tunnel - 2nd 85m - Backfilling	9	21-Sep-16	30-Sep-16	0%
C&C Tunnel - 3rd 85m - Excavation by ramp	18	23-May-16	13-Jun-16	0%
C&C Tunnel - 3rd 85m - Excavation by vertical mean	25	14-Jun-16	13-Jul-16	0%
C&C Tunnel - 3rd 85m - Tunnel Structure	83	26-Jul-16	02-Nov-16	0%
C&C Tunnel - 4th 85m - Excavation by ramp	21	30-Jun-16	25-Jul-16	0%
C&C Tunnel - 4th 85m - Excavation by vertical mean	35	26-Jul-16	03-Sep-16	0%
C&C Tunnel - 4th 85m - Tunnel Structure	83	05-Sep-16	13-Dec-16	0%
C&C Tunnel - 5th 85m - Excavation by ramp	23	26-Jul-16	20-Aug-16	0%
C&C Tunnel - 5th 85m - Excavation by vertical mean	44	22-Aug-16	14-Oct-16	0%



Activity Name	Orig Dur	DWPF Start	DWPF Finish	% Comp	2016											
					May	Jun	Jul	Aug	Sep	Oct	Nov	Dec				
C&C Tunnel - 5th 85m - Tunnel Structure	83	19-Oct-16	26-Jan-17	0%												
C&C Tunnel - 6th 85m - Excavation by ramp	27	22-Aug-16	22-Sep-16	0%												
C&C Tunnel - 6th 85m - Excavation by vertical mean	52	23-Sep-16	24-Nov-16	0%												
South Retrieval Shaft																
Design Submission																
(F4) Gantry Crane Support/Foundations in Southern Landfall																
Preparation of IFA Gantry Crane / Foundation	18	27-Jul-15	15-Aug-15	0%												
Review & Comment by JV	18	17-Aug-15	05-Sep-15	0%												
Designer prepare IFA	10	07-Sep-15	17-Sep-15	0%												
Formal Submission of IFA to ICE/ IPs	0		17-Sep-15	0%												
Advanced Submission to SO	0		17-Sep-15	0%												
IPs/ SO's Advance Comments/ ICE Comments	28	18-Sep-15	15-Oct-15	0%												
Method Statement Submission																
Method Statement of Construction Methodology of Retrieval Shaft																
Preparation Method Statement for Retrieval Shaft	25	24-Aug-15	21-Sep-15	0%												
Submit Method Statement to SO	0		21-Sep-15	0%												
SO Reviews & Comments	28	22-Sep-15	19-Oct-15	0%												
Re-submission	18	20-Oct-15	10-Nov-15	0%												
Construction																
South Landfall GI Works/DW Setting Up	48	06-Aug-15	02-Oct-15	13%												
South Retrieval Shaft - Diaphragm Wall	98	03-Oct-15	29-Jan-16	3%												
Retrieval Shaft - Excavation - Soft (other than Fill)	140	15-Apr-16	30-Sep-16	0%												
Retrieval Shaft - Temp. Slab/Prepare for TBM Breakthrough	48	03-Oct-16	28-Nov-16	0%												
South Approach Ramp																
Construction																
Approach Ramp (CH1580-1850) - Pipe Pile/Sheet Piles Wall	126	03-Oct-15	09-Mar-16	0%												
Approach Ramp (CH1580-1850) - Tension Piles	103	03-Oct-15	04-Feb-16	0%												
South Ventilation Building																
Design Submission																
(I1) DDA for South Vent.Bldg. GBP & Arch.Submission																
IPs Review	28	22-Dec-14	18-Jan-15	88%												
IP's No Objection Received	0		18-Jan-15	0%												
SO's Review	35	22-Dec-14	25-Jan-15	91%												
SO Approval with Condition Received	0		26-Jan-15	0%												
(I2) DDA for South Vent.Bldg. Foundation Design																
Review & Comment by JV	18	27-Apr-15	18-May-15	88%												
Designer prepare DDA	10	19-May-15	30-May-15	0%												
Formal Submission of DDA to ICE/ IPs	0		30-May-15	0%												
Advanced Submission to SO	0		30-May-15	0%												
IPs/ SO's Advance Comments/ ICE Comments	28	31-May-15	27-Jun-15	0%												
Comments Received	0		27-Jun-15	0%												
Designer to Reply RfC + Update Submission	21	29-Jun-15	23-Jul-15	0%												
Submit Updated DDA to SO/ ICE/ IPs	0	24-Jul-15		0%												
ICE Approval & Issue Check Cert	18	24-Jul-15	13-Aug-15	0%												
IPs Review	28	24-Jul-15	20-Aug-15	0%												
SO's Review	35	24-Jul-15	27-Aug-15	0%												
(I2) DDA for South Vent.Bldg.Structural Design incl.Vent.Connections																
Review & Comment by JV	18	18-Feb-15	17-Mar-15	76%												
Designer prepare DDA	10	18-Mar-15	28-Mar-15	0%												
Formal Submission of DDA to ICE/ IPs	0		28-Mar-15	0%												
Advanced Submission to SO	0		28-Mar-15	0%												
IPs/ SO's Advance Comments/ ICE Comments	28	29-Mar-15	25-Apr-15	0%												
Comments Received	0		25-Apr-15	0%												
Designer to Reply RfC + Update Submission	21	27-Apr-15	21-May-15	0%												
Submit Updated DDA to SO/ ICE/ IPs	0	22-May-15		0%												
ICE Approval & Issue Check Cert	18	22-May-15	12-Jun-15	0%												
IPs Review	28	22-May-15	18-Jun-15	0%												
SO's Review	35	22-May-15	25-Jun-15	0%												
(J1) DDA Temp.works for Construction of Sth.Vent.Bldg.																
Designer to Reply RfC + Update Submission	21	24-Aug-15	16-Sep-15	90%												
Submit Updated DDA to SO/ ICE/ IPs	0	17-Sep-15		0%												
ICE Approval & Issue Check Cert	12	17-Sep-15	02-Oct-15	0%												
Submit ICE Check Cert to SO	6	03-Oct-15	09-Oct-15	0%												
IPs Review	28	17-Sep-15	14-Oct-15	0%												
IP's No Objection Received	0		14-Oct-15	0%												
SO's Review	35	17-Sep-15	21-Oct-15	0%												
SO Approval with Condition Received	0		22-Oct-15	0%												
Construction																
Mobilization & Setting Up Piling Rigs	64	06-Aug-15	22-Oct-15	0%												
S - Pile Test	24	09-Apr-16	07-May-16	0%												
S - Sheet Piling	48	23-Oct-15	17-Dec-15	0%												
S - Excavation	100	09-May-16	05-Sep-16	0%												
Substructure	95	06-Sep-16	30-Dec-16	0%												
South Surface Roadworks, Utility & Drainage works																
Design Submission																
(E1) AIP - Southern Landfall Seawall Modification																
SO Review (35 Days)	35	03-Mar-17	06-Apr-17	100%												
SO Approval with Condition Received	0		06-Apr-17	100%												
(E1) DDA - Southern Landfall Seawall Modification																
Preparation of DDA Modification of Seawall at Sth Landfall	18	07-Apr-17	02-May-17	100%												
Review & Comment by JV	18	04-May-17	24-May-17	100%												
Designer prepare DDA	10	25-May-17	06-Jun-17	100%												
Formal Submission of DDA to ICE/ IPs	0		06-Jun-17	100%												

- Planned Bar
- Planned Bar - Critical
- ◆ Planned Milestone
- Progress bar
- ◆ Progress Milestone

TMCLK - Northern Connection Sub-Sea Tunnel Section
Detailed Works Programme (Rev. F)
Three Months Rolling Programme
Progress as of 31-Aug-16



Date	Revision	Checked	Approved
12-Feb-14	TMCLKDBJGEN-PRG08507	WYu	SPo
08-Apr-14	TMCLKDBJGEN-PRG08507 Rev. B	SPa	WYu
28-Aug-14	TMCLKDBJGEN-PRG08507 Rev. C	CLA	WYu
30-Oct-15	TMCLKDBJGEN-PRG08507 Rev. F	WYu	

Activity Name	Orig Dur	DWPF Start	DWPF Finish	% Comp	2016											
					May	Jun	Jul	Aug	Sep	Oct	Nov	Dec				
Advanced Submission to SO	0		06-Jun-17	100%												
IPs/ SO's Advance Comments/ ICE Comments	28	07-Jun-17	04-Jul-17	83%												
Comments Received	0		04-Jul-17	0%												
Designer to Reply RiC + Update Submission	21	05-Jul-17	28-Jul-17	0%												
Submit Updated DDA to SO/ ICE/ IPs	0	29-Jul-17		0%												
ICE Approval & Issue Check Cert	12	29-Jul-17	11-Aug-17	0%												
Submit ICE Check Cert to SO	6	12-Aug-17	18-Aug-17	0%												
IPs Review	28	29-Jul-17	25-Aug-17	0%												
IP's No Objection Received	0		25-Aug-17	0%												
SO's Review	35	29-Jul-17	01-Sep-17	0%												
SO Approval with Condition Received	0		01-Sep-17	0%												
(E3) DDA for Sewerage, Drainage, Waterworks & Utility works for South Landfall																
ICE Approval & Issue Check Cert	12	05-Mar-15	18-Mar-15	100%												
Submit ICE Check Cert to SO	6	19-Mar-15	25-Mar-15	100%												
IPs Review	28	05-Mar-15	01-Apr-15	88%												
IP's No Objection Received	0		01-Apr-15	0%												
SO's Review	35	05-Mar-15	08-Apr-15	91%												
SO Approval with Condition Received	0		08-Apr-15	0%												
Method Statement Submission																
Method Statement of Ground Treatment for TBMs Passing under Southern Landfall Seawall																
Preparation Method Statement for Ground Improvement in South Landfall	9	20-Jul-15	29-Jul-15	0%												
Submit Method Statement to SO	0		29-Jul-15	0%												
SO Reviews & Comments	28	30-Jul-15	26-Aug-15	0%												
Re-submission	6	27-Aug-15	02-Sep-15	0%												
SO's Review	28	03-Sep-15	30-Sep-15	0%												
SO's Approval	0		30-Sep-15	0%												
Construction																
Temporary Platform for Ground Treatment for TBM passing under Southern Seawall	48	06-Aug-15	02-Oct-15	0%												
Grouting Treatment for TBM passing under Southern Seawall	339	03-Oct-15	25-Nov-16	0%												Grouting Treat
Testing & Commissioning/Inspection & Handover																
Final Inspection & Handover																
Design Submission																
(A12) Maintenance Matrix																
Prepare Re-submission	18	12-Mar-16	06-Apr-16	88%												
2nd Submission	0		06-Apr-16	0%												
SO's Condition Approval	35	07-Apr-16	11-May-16	0%												
(A13) Operation & Maintenance Manual																
Preparation of Operation and Maintenance Manual	48	24-Dec-15	27-Feb-16	0%												
1st Submission	0		27-Feb-16	0%												
SO's Comments for 1st Submission	35	28-Feb-16	02-Apr-16	0%												
Prepare Re-submission	24	05-Apr-16	03-May-16	0%												
2nd Submission	0		03-May-16	0%												
SO's Condition Approval	35	04-May-16	07-Jun-16	0%												
(A14) As-built & As-fabricated Drawings																
Preparation of As-built and As-fabricated Drawings	48	24-Dec-15	27-Feb-16	0%												
1st Submission	0		27-Feb-16	0%												
SO's Comments for 1st Submission	35	28-Feb-16	02-Apr-16	0%												
Prepare Re-submission	24	05-Apr-16	03-May-16	0%												
2nd Submission	0		03-May-16	0%												
SO's Condition Approval	35	04-May-16	07-Jun-16	0%												
(A15) Health & Safety File incl. As-built Dwgs & Records, Maintenance Schedules, O&M Manual																
Preparation of Health and Safety File including as-built drawings and records, maintenance schedules, operation and maintenance manual	48	24-Dec-15	27-Feb-16	0%												
1st Submission	0		27-Feb-16	0%												
SO's Comments for 1st Submission	35	28-Feb-16	02-Apr-16	0%												
Prepare Re-submission	24	05-Apr-16	03-May-16	0%												
2nd Submission	0		03-May-16	0%												
SO's Condition Approval	35	04-May-16	07-Jun-16	0%												

- Planned Bar
- Planned Bar - Critical
- ◆ Planned Milestone
- Progress bar
- ◆ Progress Milestone



Date	Revision	Checked	Approved
12-Feb-14	TMCLKDBJGEN-PRG98507	WYu	SPo
08-Apr-14	TMCLKDBJGEN-PRG98507 Rev. B	SPa	WYu
28-Aug-14	TMCLKDBJGEN-PRG98507 Rev. C	CLa	WYu
30-Oct-15	TMCLKDBJGEN-PRG98507 Rev. F	WYu	