

Activity Name	2017							
	Mar	Apr	May	Jun	Jul	Aug	Sep	Oct
TMCLK - Northern Connection Sub-Sea Tunnel Section								
Contract Dates								
Site Possession Date								
Portions: X1,(N10,11,13 & 14) - Sth Landfall								
General Submissions								
Environmental								
Environmental Permit Submissions								
Supplementary WMP of C&C Tunnel at Sth.Landfall								
Supplementary WMP of C&C Tunnel at Sth.Landfall								
Sediment Quality Report/Dumping Permit								
Southern Landfall								
Southern landfall - Commencement of Shaft & C&C Tunnel Dwall								
Southern Landfall - Commencement of Retrieval Shaft Excavation								
PAYMENT MILESTONE								
Design and Design Checking of the Works								
MS 2.6 Approve AIP for seawall modification works at Southern Landfall by the Supervising Officer								
MS 2.7 Submit DDA for seawall modification works at Southern Landfall								
MS 2.44 Approve DDA for South Ventilation Building by the Supervising Officer								
MS 2.52 Approve DDA for Facilities Provision for TCSS by the Supervising Officer								
MS 2.60 Approve DDA for Drainage, Sewerage, Waterworks and Utilities at Northern Landfall by the Supervising Officer								
MS 2.69 Submit draft Operation and Maintenance Manual for all Tunnels and Cross Passages								
MS 2.70 Accept Operation and Maintenance Manual for all Tunnels and Cross Passages by the Supervising Officer								
MS 2.71 Submit draft Operation and Maintenance Manual for all works except Tunnels and Cross Passages								
MS 2.72 Accept Operation and Maintenance Manual for all works except Tunnels and Cross Passages by the Supervising Officer								
Tunnel Boring Machine (TBM) and Back-up Equipment for TBM Tunnel								
MS 3.1.6 Removal of TBM for Southbound Tunnel from Site after the completion of TBM Tunnel								
MS 3.1.12 Removal of TBM for Northbound Tunnel from Site after the completion of TBM Tunnel								
MS 3.1.25 Demolition of Slurry Treatment Plant on completion								
MS 3.1.26 Complete the whole of the activities under this Cost Centre Part to the satisfaction of the Supervising Officer								
TBM Tunnel								
MS 3.3.4 Complete walls of retrieval shaft								
MS 3.3.5 Complete excavation to formation level for retrieval shaft and complete casting of base slab								
MS 3.3.6 Complete all necessary works of retrieval shaft to facilitate retrieval of TBM								
MS 3.3.47 Completion of excavation, support and permanent lining for 65% of the total length (measured on plan) of the Northbound TBM Tunnel								
MS 3.3.48 Completion of excavation, support and permanent lining for 67.5% of the total length (measured on plan) of the Northbound TBM Tunnel								
MS 3.3.49 Completion of excavation, support and permanent lining for 70% of the total length (measured on plan) of the Northbound TBM Tunnel								
MS 3.3.50 Completion of excavation, support and permanent lining for 72.5% of the total length (measured on plan) of the Northbound TBM Tunnel								
MS 3.3.51 Completion of excavation, support and permanent lining for 75% of the total length (measured on plan) of the Northbound TBM Tunnel								
MS 3.3.52 Completion of excavation, support and permanent lining for 77.5% of the total length (measured on plan) of the Northbound TBM Tunnel								
MS 3.3.53 Completion of excavation, support and permanent lining for 80% of the total length (measured on plan) of the Northbound TBM Tunnel								
MS 3.3.54 Completion of excavation, support and permanent lining for 82.5% of the total length (measured on plan) of the Northbound TBM Tunnel								
MS 3.3.55 Completion of excavation, support and permanent lining for 85% of the total length (measured on plan) of the Northbound TBM Tunnel								
MS 3.3.56 Completion of excavation, support and permanent lining for 87.5% of the total length (measured on plan) of the Northbound TBM Tunnel								
MS 3.3.57 Completion of excavation, support and permanent lining for 90% of the total length (measured on plan) of the Northbound TBM Tunnel								
MS 3.3.58 Completion of excavation, support and permanent lining for 92.5% of the total length (measured on plan) of the Northbound TBM Tunnel								
MS 3.3.59 Completion of excavation, support and permanent lining for 95% of the total length (measured on plan) of the Northbound TBM Tunnel								
MS 3.3.60 Completion of excavation, support and permanent lining for 97.5% of the total length (measured on plan) of the Northbound TBM Tunnel								
MS 3.3.61 Completion of excavation, support and permanent lining for 100% of the total length (measured on plan) of the Northbound TBM Tunnel								
MS 3.3.118 Complete tunnel internal structures for 50% of total length (measured on plan) of the Northbound TBM Tunnel								
MS 3.3.119 Complete tunnel internal structures for 75% of total length (measured on plan) of the Northbound TBM Tunnel								
MS 3.3.122 Complete tunnel internal structures for 50% of total length (measured on plan) of the Southbound TBM Tunnel								
MS 3.3.123 Complete tunnel internal structures for 75% of total length (measured on plan) of the Southbound TBM Tunnel								
Cross Passages for TBM Tunnel								
MS 3.3.1 Complete 50% of ground treatment for excavation of all Type 1 Cross Passages(Percentage to be certified for 50% completion)								
MS 3.3.2 Complete 100% of ground treatment for excavation of all Type 1 Cross Passages(Percentage to be certified for 100% completion)								
MS 3.3.3 Complete 50% of ground treatment for excavation of all Type 2 Cross Passages(Percentage to be certified for 50% completion)								
MS 3.3.4 Complete 100% of ground treatment for excavation of all Type 2 Cross Passages(Percentage to be certified for 100% completion)								
MS 3.3.5 Complete 50% of excavation and support for all Type 1 Cross Passages(Percentage to be certified for 50% completion)								
MS 3.3.6 Complete 100% of excavation and support for all Type 1 Cross Passages(Percentage to be certified for 100% completion)								
MS 3.3.7 Complete 50% of excavation and support for all Type 2 Cross Passages(Percentage to be certified for 50% completion)								
MS 3.3.8 Complete 100% of excavation and support for all Type 2 Cross Passages(Percentage to be certified for 100% completion)								
MS 3.3.11 Complete 50% of permanent lining and internal structures for all Type 2 Cross Passages(Percentage to be certified for 50% completion)								
Cut-and-cover Tunnels at Southern Landfalls								
MS 4.1.1 Complete 10% of total length (measured on plan) of temporary retaining walls for excavation of Cut-and-cover Tunnel								
MS 4.1.2 Complete 20% of total length (measured on plan) of temporary retaining walls for excavation of Cut-and-cover Tunnel								
MS 4.1.3 Complete 30% of total length (measured on plan) of temporary retaining walls for excavation of Cut-and-cover Tunnel								
MS 4.1.4 Complete 40% of total length (measured on plan) of temporary retaining walls for excavation of Cut-and-cover Tunnel								
MS 4.1.5 Complete 50% of total length (measured on plan) of temporary retaining walls for excavation of Cut-and-cover Tunnel								
MS 4.1.6 Complete 60% of total length (measured on plan) of temporary retaining walls for excavation of Cut-and-cover Tunnel								
MS 4.1.7 Complete 70% of total length (measured on plan) of temporary retaining walls for excavation of Cut-and-cover Tunnel								
MS 4.1.8 Complete 80% of total length (measured on plan) of temporary retaining walls for excavation of Cut-and-cover Tunnel								
MS 4.1.9 Complete 90% of total length (measured on plan) of temporary retaining walls for excavation of Cut-and-cover Tunnel								
MS 4.1.10 Complete 100% of total length (measured on plan) of temporary retaining walls for excavation of Cut-and-cover Tunnel								
MS 4.1.11								
MS 4.1.12 Complete 40% of excavation for Cut-and-cover tunnel								
MS 4.1.13 Complete 60% of excavation for Cut-and-cover tunnel								
MS 4.1.14 Complete 80% of excavation for Cut-and-cover tunnel								
MS 4.1.15 Complete 100% of excavation for Cut-and-cover tunnel								
MS 4.1.16 Complete permanent tunnel structure for 10% of the total length (measured on plan) of Cut-and-cover Tunnel								
MS 4.1.17 Complete permanent tunnel structure for 20% of the total length (measured on plan) of Cut-and-cover Tunnel								
MS 4.1.18 Complete permanent tunnel structure for 30% of the total length (measured on plan) of Cut-and-cover Tunnel								
MS 4.1.19 Complete permanent tunnel structure for 40% of the total length (measured on plan) of Cut-and-cover Tunnel								

	Planned Bar
	Planned Bar - Critical
	Planned Milestone
	Progress bar
	Progress Milestone



Date	Revision	Checked	Approved
12-Feb-14	TMCLKDBJGEN/PRG/98507	WYu	SPo
08-Apr-14	TMCLKDBJGEN/PRG/98507 Rev.B	SPa	WYu
28-Aug-14	TMCLKDBJGEN/PRG/98507 Rev.C	CLa	WYu
30-Oct-15	TMCLKDBJGEN/PRG/98507 Rev.F	WYu	

Activity Name	2017							
	Mar	Apr	May	Jun	Jul	Aug	Sep	Oct
MS 4.1.20 Complete permanent tunnel structure for 50% of the total length (measured on plan) of Cut-and-cover Tunnel								
MS 4.1.21 Complete permanent tunnel structure for 60% of the total length (measured on plan) of Cut-and-cover Tunnel								
MS 4.1.22 Complete permanent tunnel structure for 70% of the total length (measured on plan) of Cut-and-cover Tunnel								
MS 4.1.23 Complete permanent tunnel structure for 80% of the total length (measured on plan) of Cut-and-cover Tunnel								
MS 4.1.24 Complete permanent tunnel structure for 90% of the total length (measured on plan) of Cut-and-cover Tunnel			◆ MS 4.1.24 Complete permanent tunnel structure for 90% of the total length (measured on plan) of Cut-and-cover Tunnel					
MS 4.1.25 Complete permanent tunnel structure for 100% of the total length (measured on plan) of Cut-and-cover Tunnel						◆ MS 4.1.25 Complete permanent tunnel structure for 100% of the total length (measured on plan) of Cut-and-cover Tunnel		
MS 4.1.26 Complete excavation for 50% of total length (measured on plan) of all Cross Passages								
MS 4.1.27 Complete excavation for 100% of total length (measured on plan) of all Cross Passages								
MS 4.1.28 Complete permanent junction structure at interface between Cut-and-cover Tunnel and TBM Tunnel								◆ MS 4.1.28 Complete permanent junction structure at interface between Cut-and-cover Tunnel and TBM Tunnel
MS 4.1.29 Complete pavement for 50% of the total length (measured on plan) of Cut-and-cover Tunnel								
MS 4.1.30 Complete pavement for 100% of the total length (measured on plan) of Cut-and-cover Tunnel								◆ MS 4.1.30 Complete pavement for 100% of the total length (measured on plan) of Cut-and-cover Tunnel
MS 4.1.31 Complete the whole of the activities under this Cost Centre to the satisfaction of the Supervising Officer								◆ MS 4.1.31 Complete the whole of the activities under this Cost Centre to the satisfaction of the Supervising Officer
Cut-and-cover Tunnel at Northern Landfall								
MS 4.2.23 Complete tunnel internal structure for 100% of NB Northern Landfall TBM Tunnel								
MS 4.2.25 Complete tunnel internal structure for 100% of SB Northern Landfall TBM Tunnel								
MS 4.2.29 Complete 100% of permanent lining and internal structures for all Northern Landfall Cross Passages								
MS 4.2.30 Complete Permanent tunnel structure for 25% of Cut and Cover Tunnel								
MS 4.2.31 Complete Permanent tunnel structure for 50% of Cut and Cover Tunnel								
MS 4.2.32 Complete Permanent tunnel structure for 75% of Cut and Cover Tunnel								
MS 4.2.34 Complete Permanent junction structure at interface between Cut-and-cover and TBM Tunnel								
Approach Ramp Structures to Cut-and-cover Tunnel at Southern Landfall								
MS 5.1.2 Complete 40% of excavation for approach ramp structures								
MS 5.1.3 Complete 60% of excavation for approach ramp structures								
MS 5.1.4 Complete 80% of excavation for approach ramp structures								
MS 5.1.5 Complete 100% of excavation for approach ramp structures								
MS 5.1.6 Complete retaining wall foundation for 10% of the total length (measured on plan) of approach ramp								
MS 5.1.7 Complete retaining wall foundation for 20% of the total length (measured on plan) of approach ramp								
MS 5.1.8 Complete retaining wall foundation for 30% of the total length (measured on plan) of approach ramp								
MS 5.1.9 Complete retaining wall foundation for 40% of the total length (measured on plan) of approach ramp								
MS 5.1.10 Complete retaining wall foundation for 50% of the total length (measured on plan) of approach ramp								
MS 5.1.11 Complete retaining wall foundation for 60% of the total length (measured on plan) of approach ramp								
MS 5.1.12 Complete retaining wall foundation for 70% of the total length (measured on plan) of approach ramp								
MS 5.1.13 Complete retaining wall foundation for 80% of the total length (measured on plan) of approach ramp								
MS 5.1.14 Complete retaining wall foundation for 90% of the total length (measured on plan) of approach ramp								
MS 5.1.15 Complete retaining wall foundation for 100% of the total length (measured on plan) of approach ramp								
MS 5.1.16 Complete retaining wall structure for 10% of the total length (measured on plan) of approach ramp								◆ MS 5.1.16 Complete retaining wall structure for 10% of the total length (measured on plan) of approach ramp
MS 5.1.17 Complete retaining wall structure for 20% of the total length (measured on plan) of approach ramp								◆ MS 5.1.17 Complete retaining wall structure for 20% of the total length (measured on plan) of approach ramp
MS 5.1.18 Complete retaining wall structure for 30% of the total length (measured on plan) of approach ramp								◆ MS 5.1.18 Complete retaining wall structure for 30% of the total length (measured on plan) of approach ramp
MS 5.1.19 Complete retaining wall structure for 40% of the total length (measured on plan) of approach ramp								◆ MS 5.1.19 Complete retaining wall structure for 40% of the total length (measured on plan) of approach ramp
MS 5.1.20 Complete retaining wall structure for 50% of the total length (measured on plan) of approach ramp								◆ MS 5.1.20 Complete retaining wall structure for 50% of the total length (measured on plan) of approach ramp
Approach Ramp Structures to Cut-and-cover Tunnel at Northern Landfall								
MS 5.2.6 Complete retaining wall foundation for 10% of the total length (measured on plan) of approach ramp								◆ MS 5.2.6 Complete retaining wall foundation for 10% of the total length (measured on plan) of approach ramp
MS 5.2.7 Complete retaining wall foundation for 20% of the total length (measured on plan) of approach ramp								◆ MS 5.2.7 Complete retaining wall foundation for 20% of the total length (measured on plan) of approach ramp
MS 5.2.8 Complete retaining wall foundation for 30% of the total length (measured on plan) of approach ramp								◆ MS 5.2.8 Complete retaining wall foundation for 30% of the total length (measured on plan) of approach ramp
MS 5.2.9 Complete retaining wall foundation for 40% of the total length (measured on plan) of approach ramp								◆ MS 5.2.9 Complete retaining wall foundation for 40% of the total length (measured on plan) of approach ramp
MS 5.2.10 Complete retaining wall foundation for 50% of the total length (measured on plan) of approach ramp								◆ MS 5.2.10 Complete retaining wall foundation for 50% of the total length (measured on plan) of approach ramp
MS 5.2.11 Complete retaining wall foundation for 60% of the total length (measured on plan) of approach ramp								◆ MS 5.2.11 Complete retaining wall foundation for 60% of the total length (measured on plan) of approach ramp
MS 5.2.12 Complete retaining wall foundation for 70% of the total length (measured on plan) of approach ramp								◆ MS 5.2.12 Complete retaining wall foundation for 70% of the total length (measured on plan) of approach ramp
MS 5.2.13 Complete retaining wall foundation for 80% of the total length (measured on plan) of approach ramp								◆ MS 5.2.13 Complete retaining wall foundation for 80% of the total length (measured on plan) of approach ramp
At grade Roads at Southern Landfall								
MS 6.1.13 Complete drainage installation of 20% length of total length (measured on plan) of drainage pipes								◆ MS 6.1.13 Complete drainage installation of 20% length of total length (measured on plan) of drainage pipes
At grade Roads at Northern Landfall								
MS 6.2.1 Complete sub-base works of 20% of total area of at grade roads								◆ MS 6.2.1 Complete sub-base works of 20% of total area of at grade roads
MS 6.2.5 Complete pavement of 20% of total area of at grade roads								◆ MS 6.2.5 Complete pavement of 20% of total area of at grade roads
MS 6.2.13 Complete drainage installation of 20% length of total length (measured on plan) of drainage pipes			◆ MS 6.2.13 Complete drainage installation of 20% length of total length (measured on plan) of drainage pipes					
MS 6.2.17 Complete sewerage installation of 20% length of total length (measured on plan) of sewerage pipes			◆ MS 6.2.17 Complete sewerage installation of 20% length of total length (measured on plan) of sewerage pipes					
MS 6.2.21 Complete watermain installation of 20% length of total length (measured on plan) of watermain								◆ MS 6.2.21 Complete watermain installation of 20% length of total length (measured on plan) of watermain
South Ventilation Buildings								
MS 7.1.1 Complete 100% of cofferdam for excavation								
MS 7.1.2 Complete 100% of excavation to the formation level								
MS 7.1.3 Complete 100% of foundation for the ventilation building								
MS 7.1.4 Complete concreting works of 25% area of the total construction floor area for the ventilation building								
MS 7.1.5 Complete concreting works of 50% area of the total construction floor area for the ventilation building								
MS 7.1.6 Complete concreting works of 75% area of the total construction floor area for the ventilation building								◆ MS 7.1.6 Complete concreting works of 75% area of the total construction floor area for the ventilation building
MS 7.1.7 Complete concreting works of 100% area of the total construction floor area for the ventilation building								◆ MS 7.1.7 Complete concreting works of 100% area of the total construction floor area for the ventilation building
North Ventilation Buildings								
MS 7.2.4 Complete concreting works of 25% area of the total construction floor area for the ventilation building								
MS 7.2.5 Complete concreting works of 50% area of the total construction floor area for the ventilation building								
MS 7.2.6 Complete concreting works of 75% area of the total construction floor area for the ventilation building								
MS 7.2.7 Complete concreting works of 100% area of the total construction floor area for the ventilation building								◆ MS 7.2.7 Complete concreting works of 100% area of the total construction floor area for the ventilation building
Facilities Provision for TCSS for At Grade Roads at Northern Landfall								
MS 8.2.5 Complete 25% of support foundation, ductings, drawpits for at grade roads								◆ MS 8.2.5 Complete 25% of support foundation, ductings, drawpits for at grade roads
Facilities Provision for E&M Works for TBM Tunnel, Cut & Cover Tunnels and Cross Passages								
MS 9.1.1 Complete 25% of bonding terminal, opening and accessories, etc.								
MS 9.1.2 Complete 25% of plinth, hoisting facilities and accessories, etc.								
MS 9.1.3 Complete 50% of bonding terminal, opening and accessories, etc.								
MS 9.1.4 Complete 50% of plinth, hoisting facilities and accessories, etc.								
MS 9.1.5 Complete 75% of bonding terminal, opening and accessories, etc.								◆ MS 9.1.5 Complete 75% of bonding terminal, opening and accessories, etc.
MS 9.1.6 Complete 75% of plinth, hoisting facilities and accessories, etc.								◆ MS 9.1.6 Complete 75% of plinth, hoisting facilities and accessories, etc.
Facilities Provision for E&M Works for South Ventilation Building								
MS 9.4.1 Complete 25% of bonding terminal, main earth mat, clean earth mat, earth pit, lightning pit, concealment, etc.								◆ MS 9.4.1 Complete 25% of bonding terminal, main earth mat, clean earth mat, earth pit, lightning pit, concealment, etc.
MS 9.4.2 Complete 25% of plinth, hoisting facilities, louver, wire mesh and accessories, etc.								◆ MS 9.4.2 Complete 25% of plinth, hoisting facilities, louver, wire mesh and accessories, etc.

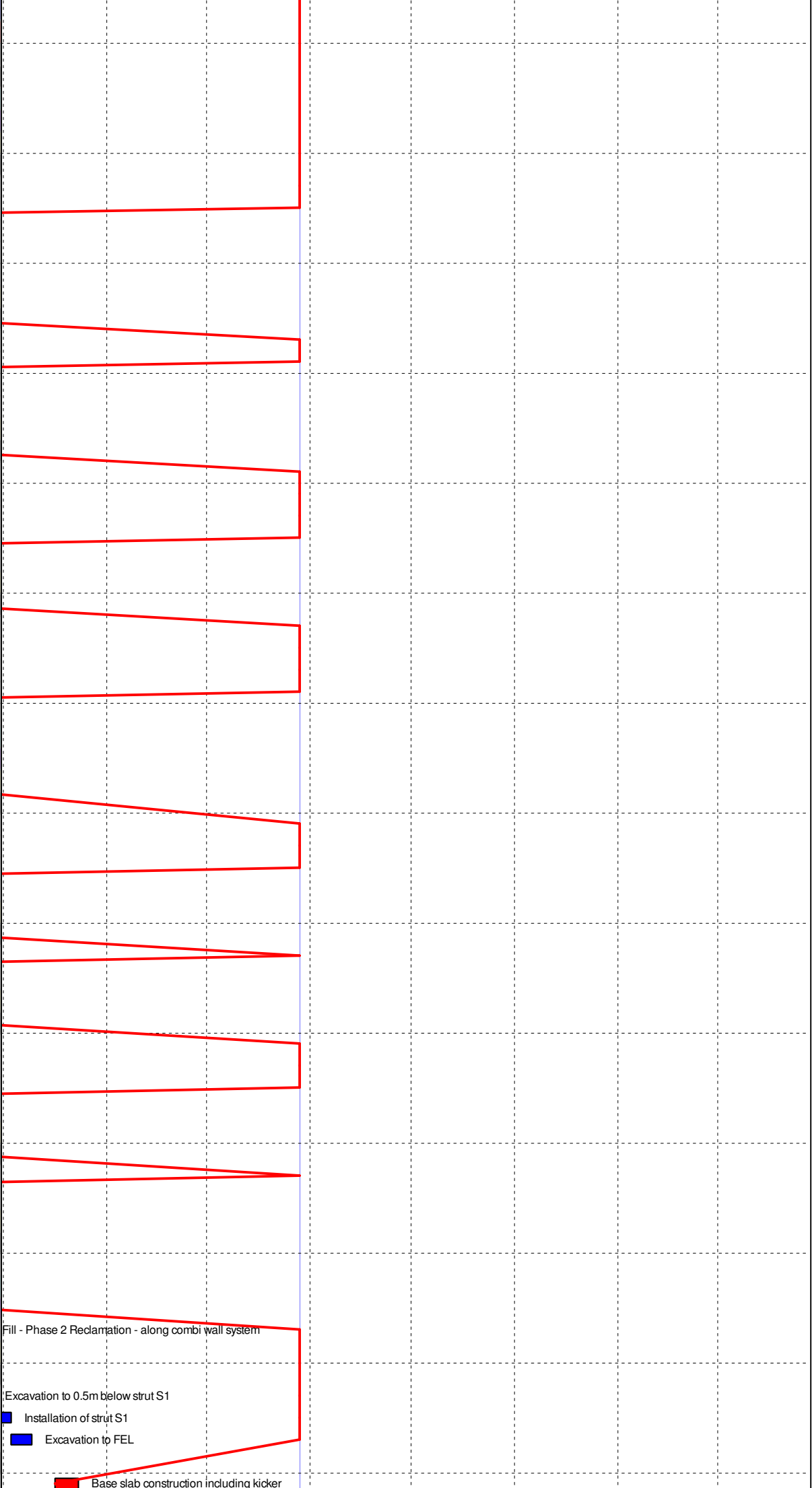
- Planned Bar
- Planned Bar - Critical
- Planned Milestone
- Progress bar
- Progress Milestone



Date	Revision	Checked	Approved
12-Feb-14	TMCLKDBJGEN-PRG98507	WYu	SPa
08-Apr-14	TMCLKDBJGEN-PRG98507 Rev.B	SPa	WYu
28-Aug-14	TMCLKDBJGEN-PRG98507 Rev.C	CLa	WYu
30-Oct-15	TMCLKDBJGEN-PRG98507 Rev.F	WYu	

Activity Name	2017								
	Mar	Apr	May	Jun	Jul	Aug	Sep	Oct	
MS 9.4.3 Complete 25% of floor drain, water tank and accessories, etc.				◆ MS 9.4.3 Complete 25% of floor drain, water tank and accessories, etc.					
MS 9.4.4 Complete 50% of bonding terminal, main earth mat, clean earth mat, earth pit, lightning pit, conceal						◆ MS 9.4.4 Complete 50% of bonding terminal, main earth mat, clean earth mat, earth pit, lightning pit, conceal			
MS 9.4.5 Complete 50% of plinth, hoisting facilities, louver, wire mesh and accessories, etc.						◆ MS 9.4.5 Complete 50% of plinth, hoisting facilities, louver, wire mesh and accessories, etc.			
MS 9.4.6 Complete 50% of floor drain, water tank and accessories, etc.						◆ MS 9.4.6 Complete 50% of floor drain, water tank and accessories, etc.			
Facilities Provision for E&M Works for North Ventilation Building									
MS 9.5.1 Complete 25% of bonding terminal, main earth mat, clean earth mat, earth pit, lightning pit, conceal			◆ MS 9.5.1 Complete 25% of bonding terminal, main earth mat, clean earth mat, earth pit, lightning pit, conceal						
MS 9.5.2 Complete 25% of plinth, hoisting facilities, louver, wire mesh and accessories, etc.			◆ MS 9.5.2 Complete 25% of plinth, hoisting facilities, louver, wire mesh and accessories, etc.						
MS 9.5.3 Complete 25% of floor drain, water tank and accessories, etc.			◆ MS 9.5.3 Complete 25% of floor drain, water tank and accessories, etc.						
MS 9.5.4 Complete 50% of bonding terminal, main earth mat, clean earth mat, earth pit, lightning pit, conceal						◆ MS 9.5.4 Complete 50% of bonding terminal, main earth mat, clean earth mat, earth pit, lightning pit, conceal			
MS 9.5.5 Complete 50% of plinth, hoisting facilities, louver, wire mesh and accessories, etc.						◆ MS 9.5.5 Complete 50% of plinth, hoisting facilities, louver, wire mesh and accessories, etc.			
MS 9.5.6 Complete 50% of floor drain, water tank and accessories, etc.						◆ MS 9.5.6 Complete 50% of floor drain, water tank and accessories, etc.			
MS 9.5.7 Complete 75% of bonding terminal, main earth mat, clean earth mat, earth pit, lightning pit, conceal						◆ MS 9.5.7 Complete 75% of bonding terminal, main earth mat, clean earth mat, earth pit, lightning pit, conceal			
MS 9.5.8 Complete 75% of plinth, hoisting facilities, louver, wire mesh and accessories, etc.						◆ MS 9.5.8 Complete 75% of plinth, hoisting facilities, louver, wire mesh and accessories, etc.			
MS 9.5.9 Complete 75% of floor drain, water tank and accessories, etc.						◆ MS 9.5.9 Complete 75% of floor drain, water tank and accessories, etc.			

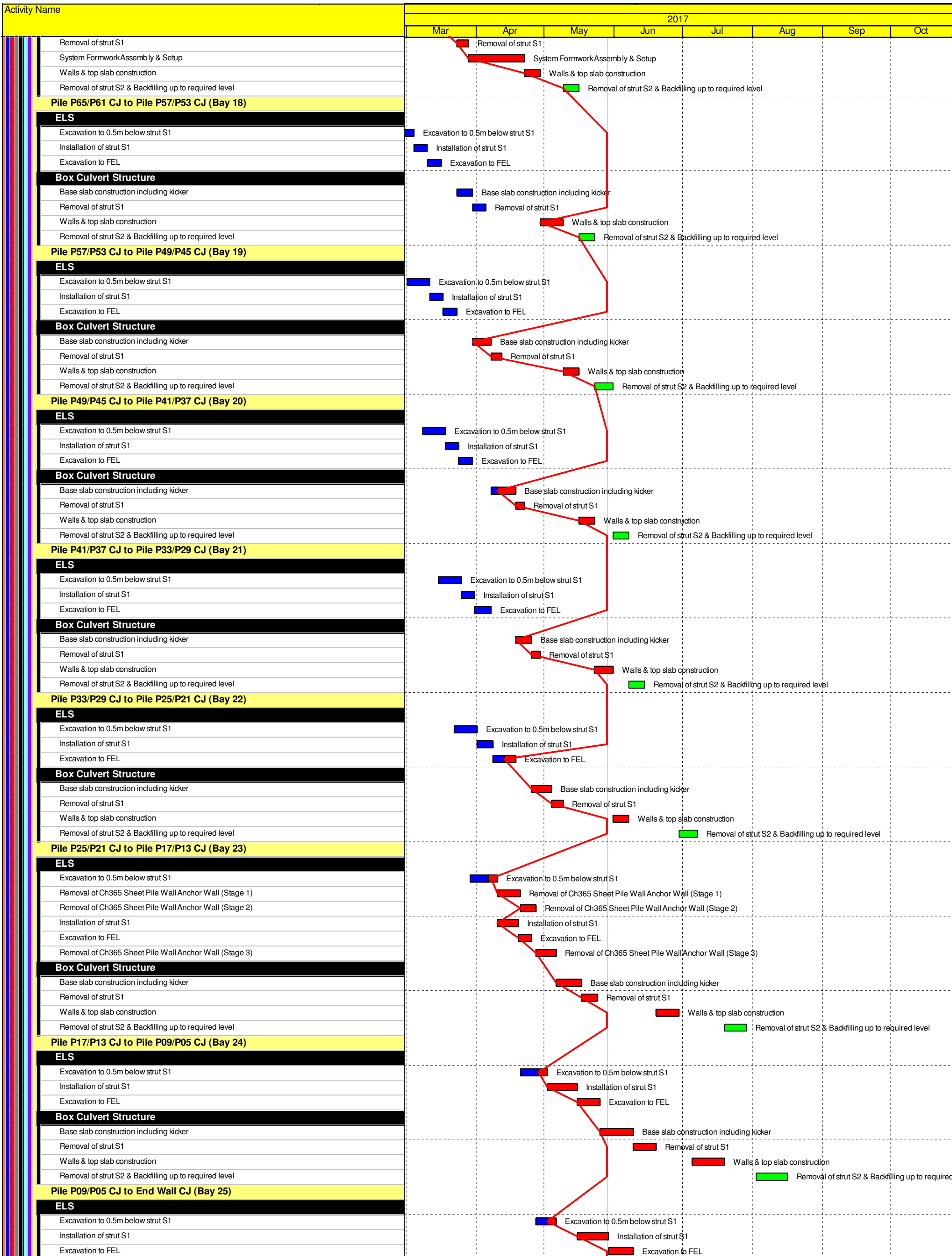
Construction
Northern Landfall
Box Culvert Extension
Construction
CH100-150 Land Section
ELS & Structure
Pile A41/A39 CJ to Pile A39/A37 CJ (Bay 7)
Box Culvert Structure
Base slab construction including kicker
Removal of strut S1
Sliding formworks 1st assembly
Walls & top slab construction
Removal of strut S2 & Backfilling up to required level
Pile A39/A37 CJ to Pile A37/A35 CJ (Bay 8)
Box Culvert Structure
Base slab construction including kicker
Removal of strut S1
Walls & top slab construction
Removal of strut S2 & Backfilling up to required level
Pile A37/A35 CJ to Pile A35/A33 CJ (Bay 9)
Box Culvert Structure
Pile cap construction
Base slab construction including kicker
Removal of strut S1
Walls & top slab construction
Removal of strut S2 & Backfilling up to required level
Pile A35/A33 CJ to Pile A33/P117 CJ (Bay 10)
Box Culvert Structure
Pile cap construction
Base slab construction including kicker
Removal of strut S1
Walls & top slab construction
Removal of strut S2 & Backfilling up to required level
Ch150-250 Marine Section
ELS & Structure
Pile A33/P117 CJ to Pile P113/P109 CJ (Bay 11)
Box Culvert Structure
Base slab construction including kicker
Removal of strut S1
Walls & top slab construction
Removal of strut S2 & Backfilling up to required level
Pile P113/P109 CJ to Pile P105/P101 CJ (Bay 12)
Box Culvert Structure
Walls & top slab construction
Removal of strut S2 & Backfilling up to required level
Pile P105/P101 CJ to Pile P97/P93 CJ (Bay 13)
Box Culvert Structure
Base slab construction including kicker
Removal of strut S1
Walls & top slab construction
Removal of strut S2 & Backfilling up to required level
Pile P97/P93 CJ to Pile P89/P85 CJ (Bay 14)
Box Culvert Structure
Walls & top slab construction
Removal of strut S2 & Backfilling up to required level
Pile P89/P85 CJ to Pile P81/P77 CJ (Bay 15)
Box Culvert Structure
Removal of strut S2 & Backfilling up to required level
Ch250-380 Marine Section
ELS & Structure
Public Fill - Phase 2 Reclamation - along combi wall system
Pile P73/P69 CJ to Pile P65/P61 CJ (Bay17)
ELS
Excavation to 0.5m below strut S1
Installation of strut S1
Excavation to FEL
Box Culvert Structure
Base slab construction including kicker



	Planned Bar
	Planned Bar - Critical
	Planned Milestone
	Progress bar
	Progress Milestone

Dragages - Bouygues Joint Venture 寶嘉 - 布依格聯營

Date	Revision	Checked	Approved
12-Feb-14	TMCLKDBJGEN/PRG/98507	WYu	SPo
08-Apr-14	TMCLKDBJGEN/PRG/98507 Rev.B	SPa	WYu
28-Aug-14	TMCLKDBJGEN/PRG/98507 Rev.C	CLa	WYu
30-Oct-15	TMCLKDBJGEN/PRG/98507 Rev.F	WYu	

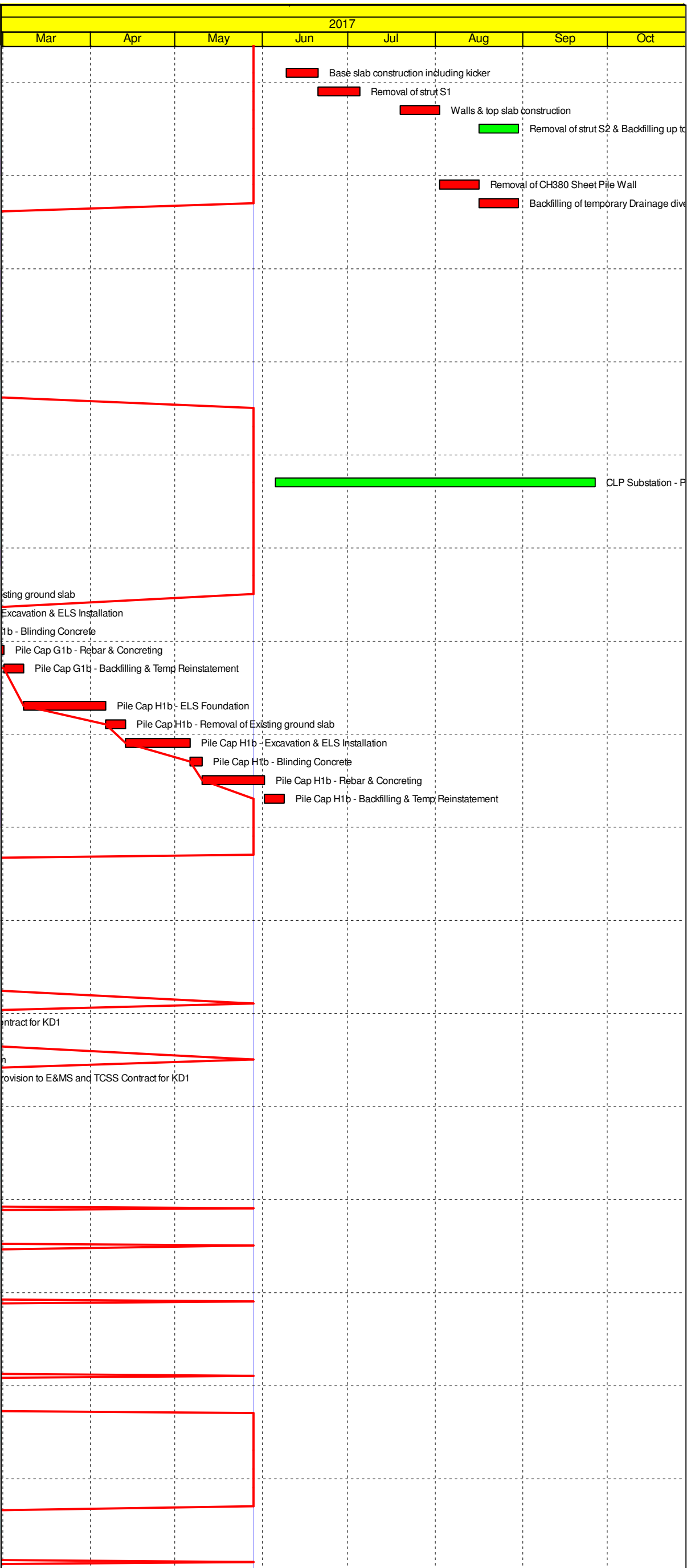


- Planned Bar
- Planned Bar - Critical
- ◆ Planned Milestone
- Progress bar
- ◆ Progress Milestone



Date	Revision	Checked	Approved
12-Feb-14	TMCLKDBJGEN/PRG/98507	WYu	SPo
08-Apr-14	TMCLKDBJGEN/PRG/98507 Rev.B	SPa	WYu
28-Aug-14	TMCLKDBJGEN/PRG/98507 Rev.C	CLa	WYu
30-Oct-15	TMCLKDBJGEN/PRG/98507 Rev.F	WYu	

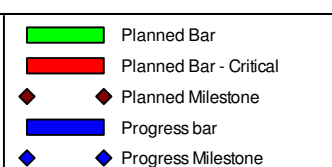
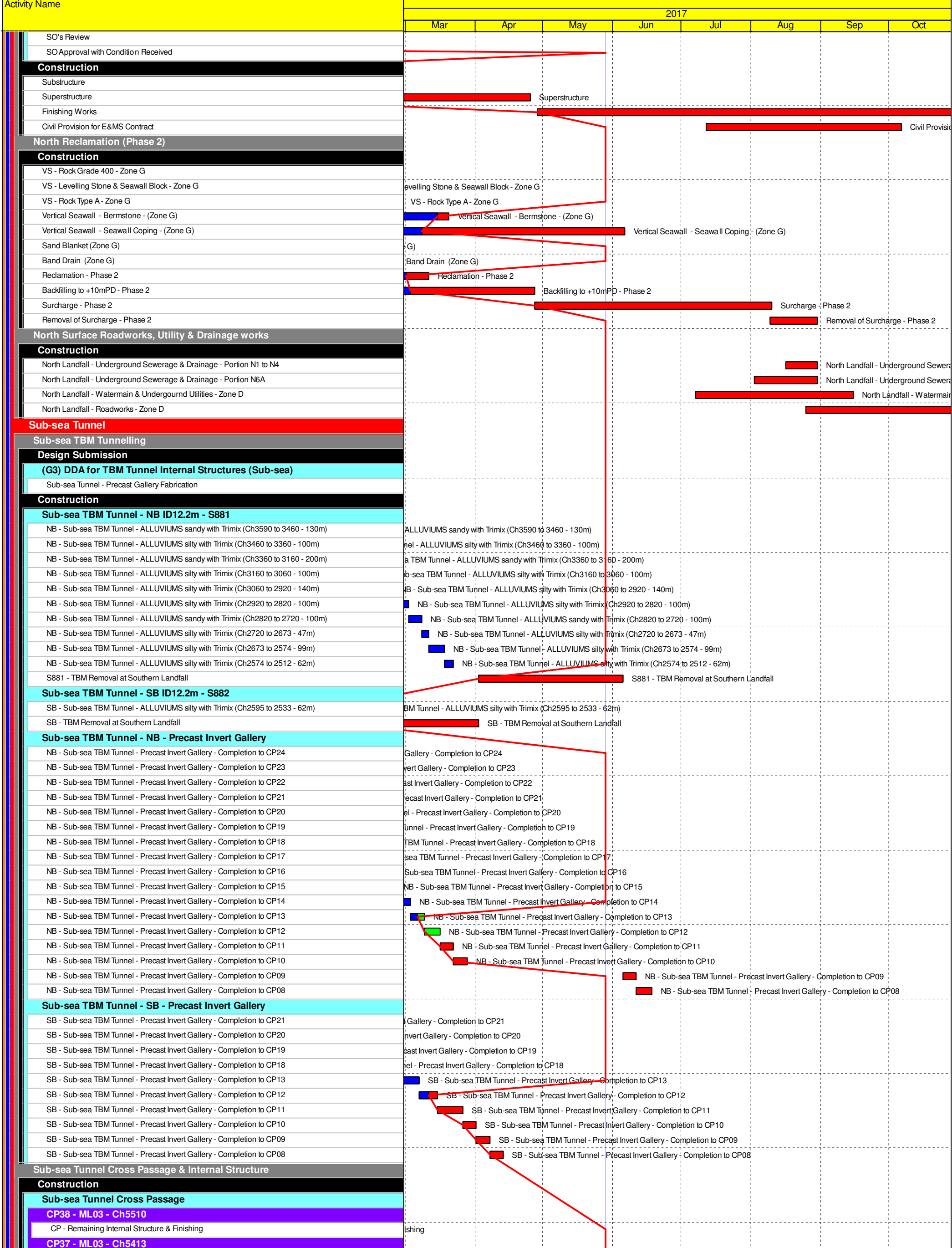
Activity Name	
Box Culvert Structure	
Base slab construction including kicker	
Removal of strut S1	
Walls & top slab construction	
Removal of strut S2 & Backfilling up to required level	
Ch380-399 Connection Section	
Connection to Existing Culvert	
Removal of CH380 Sheet Pile Wall	
Backfilling of temporary Drainage diversion channel for Handover	
Miscellaneous works	
Inspection Manhole (IM)	
Inspection Manhole IM-01 to IM-04 & backfilling to +6.0mPD	
Stop Log Opening (SLO)	
SLO-01 to SLO-05 & backfilling to +6.0mPD	
Balance Hole (BH)	
BH-01 to BH-03 & backfilling to +6.0mPD	
North Ventilation Shaft	
Construction	
North Ventilation Shaft Structure	
NVS - ML03 Tunnel Structure	
NVS - ML02 Tunnel Structure	
CLP Temporary Substation	
Construction	
CLP Substation - Prepare for CLP consent for de-energization	
TMCLK VO-008 - Construction of Viaduct Foundations at Portion N6A	
Viaduct Pile Cap	
Construction	
Pier G1b	
Pile Cap G1b - ELS Foundation	
Pile Cap G1b - Removal of Existing ground slab	
Pile Cap G1b - Excavation & ELS Installation	
Pile Cap G1b - Blinding Concrete	
Pile Cap G1b - Rebar & Concreting	
Pile Cap G1b - Backfilling & Temp Reinstatement	
Pier H1b	
Pile Cap H1b - ELS Foundation	
Pile Cap H1b - Removal of Existing ground slab	
Pile Cap H1b - Excavation & ELS Installation	
Pile Cap H1b - Blinding Concrete	
Pile Cap H1b - Rebar & Concreting	
Pile Cap H1b - Backfilling & Temp Reinstatement	
Pier H1c	
Pile Cap H1c - Preparation for ELS	
Pile Cap H1c - Removal of Existing ground slab	
Pile Cap H1c - Excavation & ELS Installation	
Pile Cap H1c - Blinding Concrete	
Pile Cap H1c - Rebar & Concreting	
Pile Cap H1c - Backfilling & Temp Reinstatement	
North Approach TBM Tunnelling & Cross Passage	
Construction	
North Approach Tunnel Internal Structure - NB	
NB - North TBM Tunnel - OHVD Slab installation	
NB - North TBM Tunnel - Fire proofing and Provision to E&MS and TCSS Contract for KD1	
North Approach Tunnel Internal Structure - SB	
SB - North TBM Tunnel - OHVD Slab installation	
SB - North TBM Tunnel - Fire proofing & Provision to E&MS and TCSS Contract for KD1	
North Ventilation Building	
Design Submission	
(A11) Submissions to Design Advisory Panel of ArchSD	
ArchSD's comment	
(I1) DDA for North Vent.Bldgs. GBP & Arch.Submission	
IPs Review	
IP's No Objection Received	
SO's Review	
SO Approval with Condition Received	
(I1) DDA for North & South Vent.Bldg. ABWF works	
Designer to Reply RtC + Update Submission	
Submit Updated DDA to SO/ICE/IPs	
ICE Approval & Issue Check Cert	
Submit ICE Check Cert to SO	
IPs Review	
IP's No Objection Received	
SO's Review	
SO Approval with Condition Received	
(I2) DDA for North Vent.Bldgs.Structural Design incl.Vent.Connections	
IPs Review	
IP's No Objection Received	
SO's Review	
SO Approval with Condition Received	
(I3) DDA for North & South Vent.Bldgs. Service and E&M Provision	
IPs Review	
IP's No Objection Received	



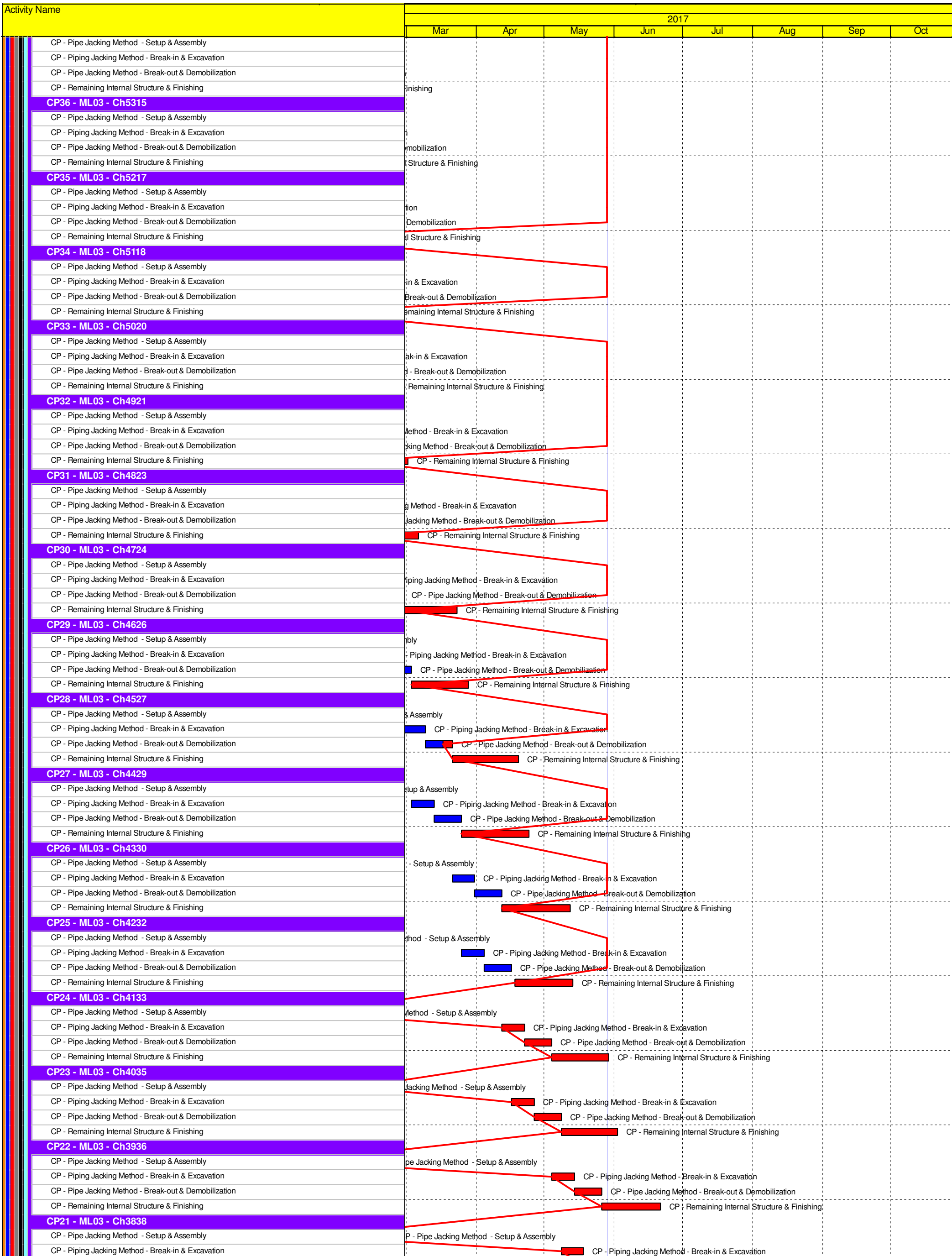
- Planned Bar
- Planned Bar - Critical
- Progress bar
- ◆ Planned Milestone
- ◆ Progress Milestone



Date	Revision	Checked	Approved
12-Feb-14	TMCLKDBJGEN/PRG/98507	WYu	SPo
08-Apr-14	TMCLKDBJGEN/PRG/98507 Rev.B	SPa	WYu
28-Aug-14	TMCLKDBJGEN/PRG/98507 Rev.C	CLa	WYu
30-Oct-15	TMCLKDBJGEN/PRG/98507 Rev.F	WYu	



Date	Revision	Checked	Approved
12-Feb-14	TMCLKDBJGEN/PRG/98507	WYu	SPo
08-Apr-14	TMCLKDBJGEN/PRG/98507 Rev.B	SPa	WYu
28-Aug-14	TMCLKDBJGEN/PRG/98507 Rev.C	CLa	WYu
30-Oct-15	TMCLKDBJGEN/PRG/98507 Rev.F	WYu	

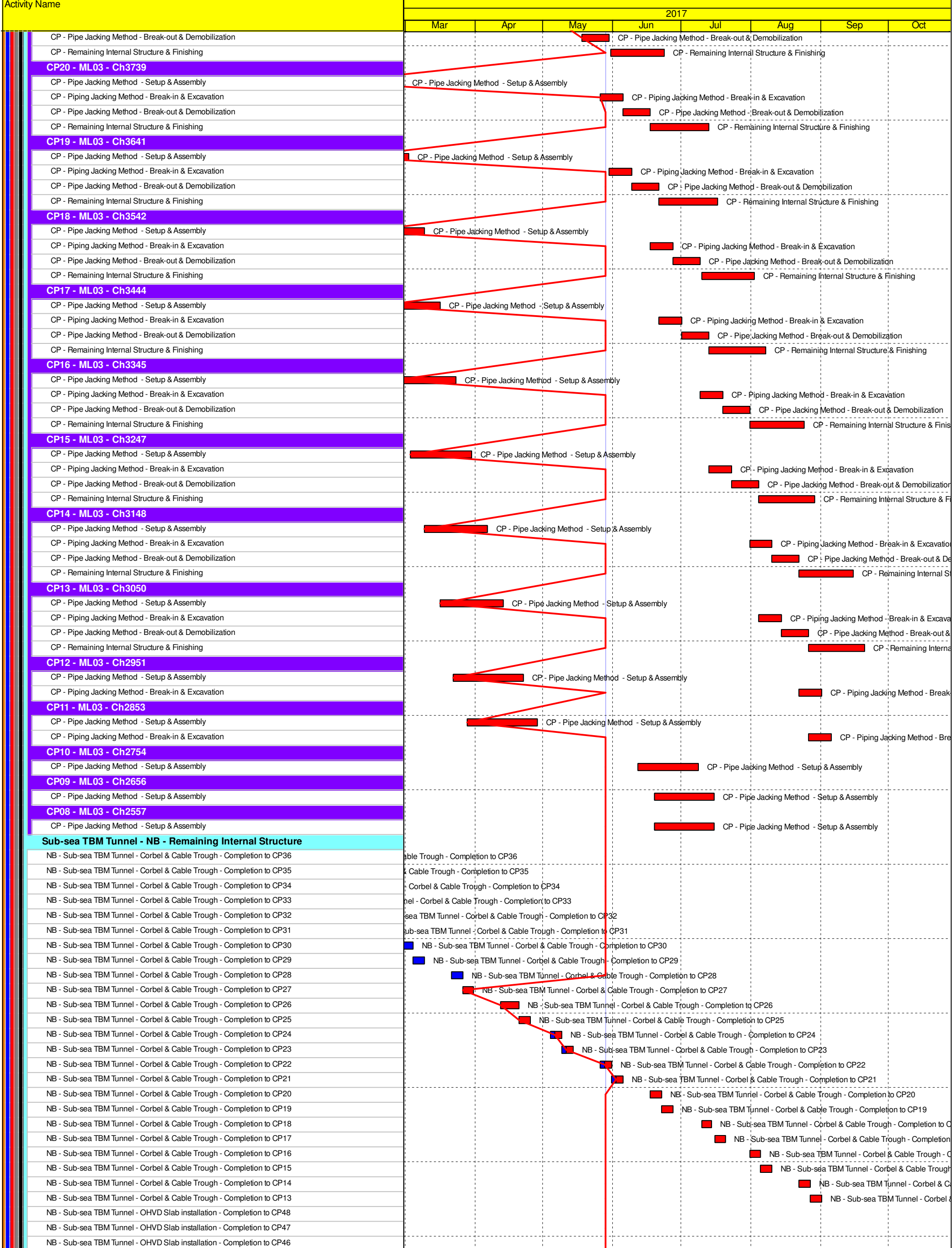


- Planned Bar
- Planned Bar - Critical
- Planned Milestone
- Progress bar
- Progress Milestone

TMCLK - Northern Connection Sub-Sea Tunnel Section
 Detailed Works Programme (Rev. F)
 Three Months Rolling Programme
 Progress as of 28-May-17



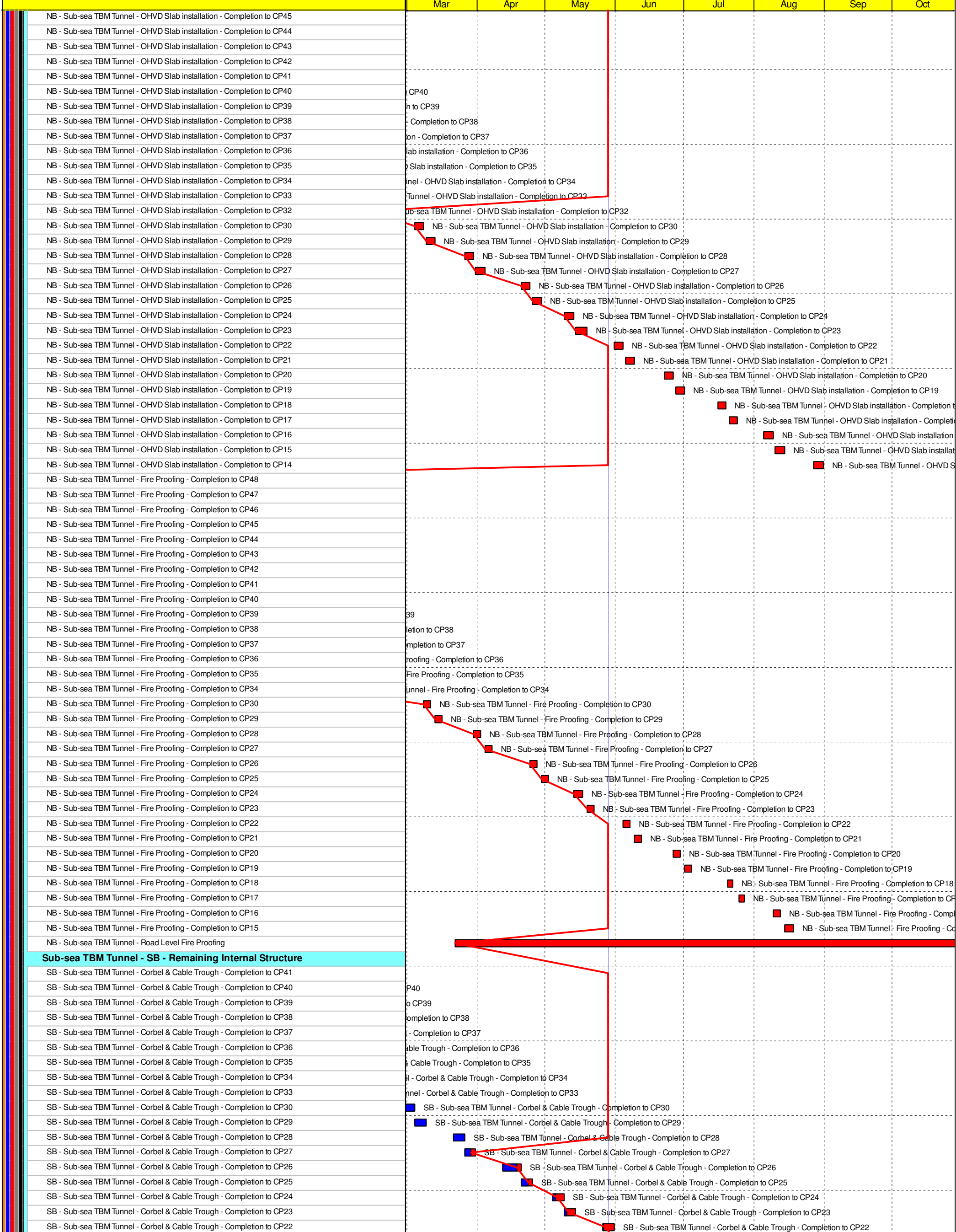
Date	Revision	Checked	Approved
12-Feb-14	TMCLKDBJGENPRG98507	WYu	SPo
08-Apr-14	TMCLKDBJGENPRG98507 Rev.B	SPa	WYu
28-Aug-14	TMCLKDBJGENPRG98507 Rev.C	CLa	WYu
30-Oct-15	TMCLKDBJGENPRG98507 Rev.F	WYu	



- Planned Bar
- Planned Bar - Critical
- ◆ Planned Milestone
- Progress bar
- ◆ Progress Milestone



Date	Revision	Checked	Approved
12-Feb-14	TMCLKDUBGEN/PRG/98507	WYu	SPa
08-Apr-14	TMCLKDUBGEN/PRG/98507 Rev.B	SPa	WYu
28-Aug-14	TMCLKDUBGEN/PRG/98507 Rev.C	CLa	WYu
30-Oct-15	TMCLKDUBGEN/PRG/98507 Rev.F	WYu	

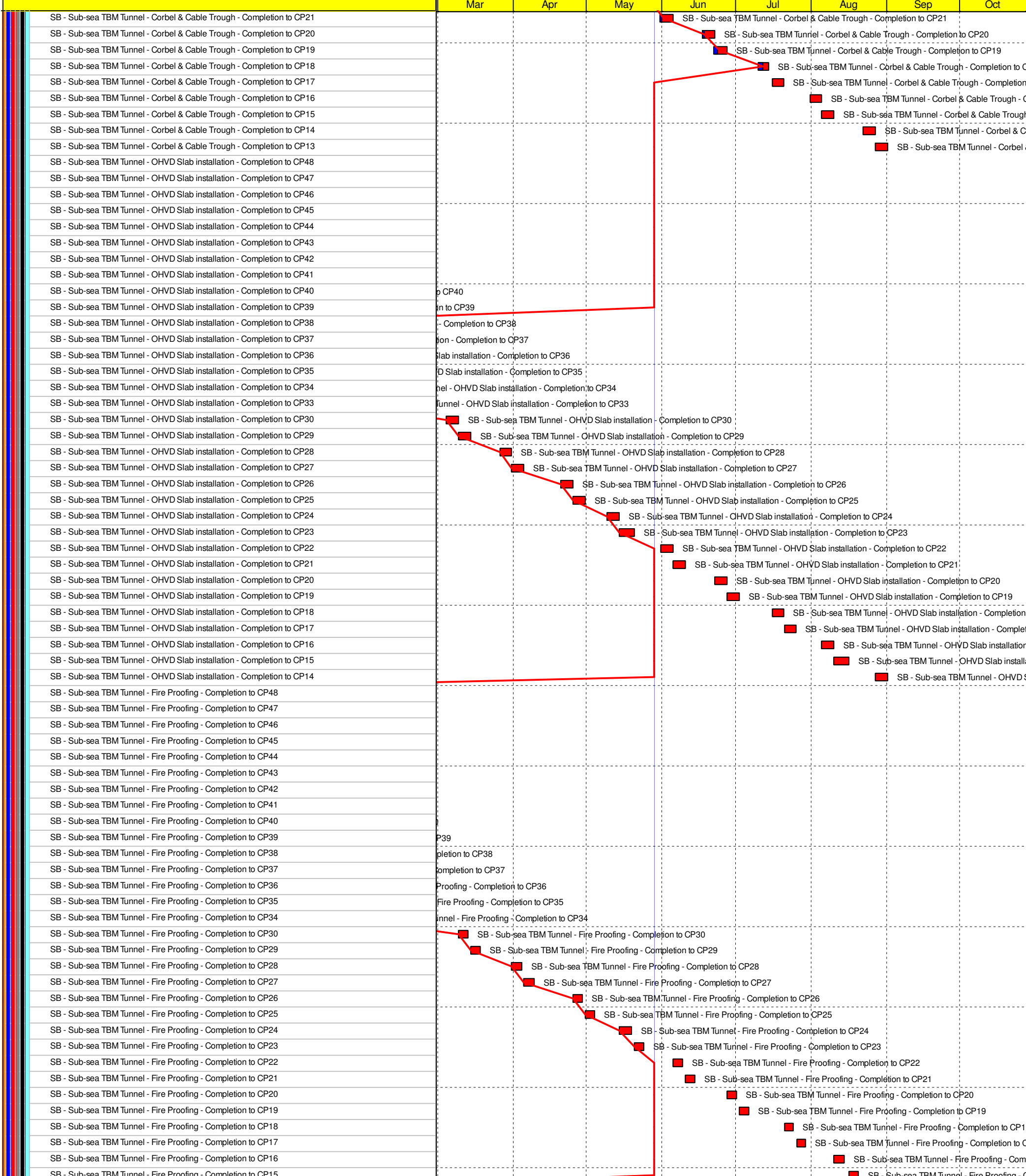


- Planned Bar
- Planned Bar - Critical
- ◆ Planned Milestone
- Progress bar
- ◆ Progress Milestone

TMCLK - Northern Connection Sub-Sea Tunnel Section
 Detailed Works Programme (Rev. F)
 Three Months Rolling Programme
 Progress as of 28-May-17



Date	Revision	Checked	Approved
12-Feb-14	TMCLKDBJGENPRG98507	WYu	SPo
08-Apr-14	TMCLKDBJGENPRG98507 Rev.B	SPa	WYu
28-Aug-14	TMCLKDBJGENPRG98507 Rev.C	CLa	WYu
30-Oct-15	TMCLKDBJGENPRG98507 Rev.F	WYu	



Southern Landfall	
South Cut & Cover Tunnel	
Design Submission	
(E2) DDA for South C&C Box & Approach Ramp	
Review & Comment by JV	
Designer prepare DDA	
Formal Submission of DDA to ICE/ IPs	
Advanced Submission to SO	
IPs/ SO's Advance Comments/ ICE Comments	

- Planned Bar
- Planned Bar - Critical
- ◆ Planned Milestone
- Progress bar
- ◆ Progress Milestone

TMCLK - Northern Connection Sub-Sea Tunnel Section
 Detailed Works Programme (Rev. F)
 Three Months Rolling Programme
 Progress as of 28-May-17



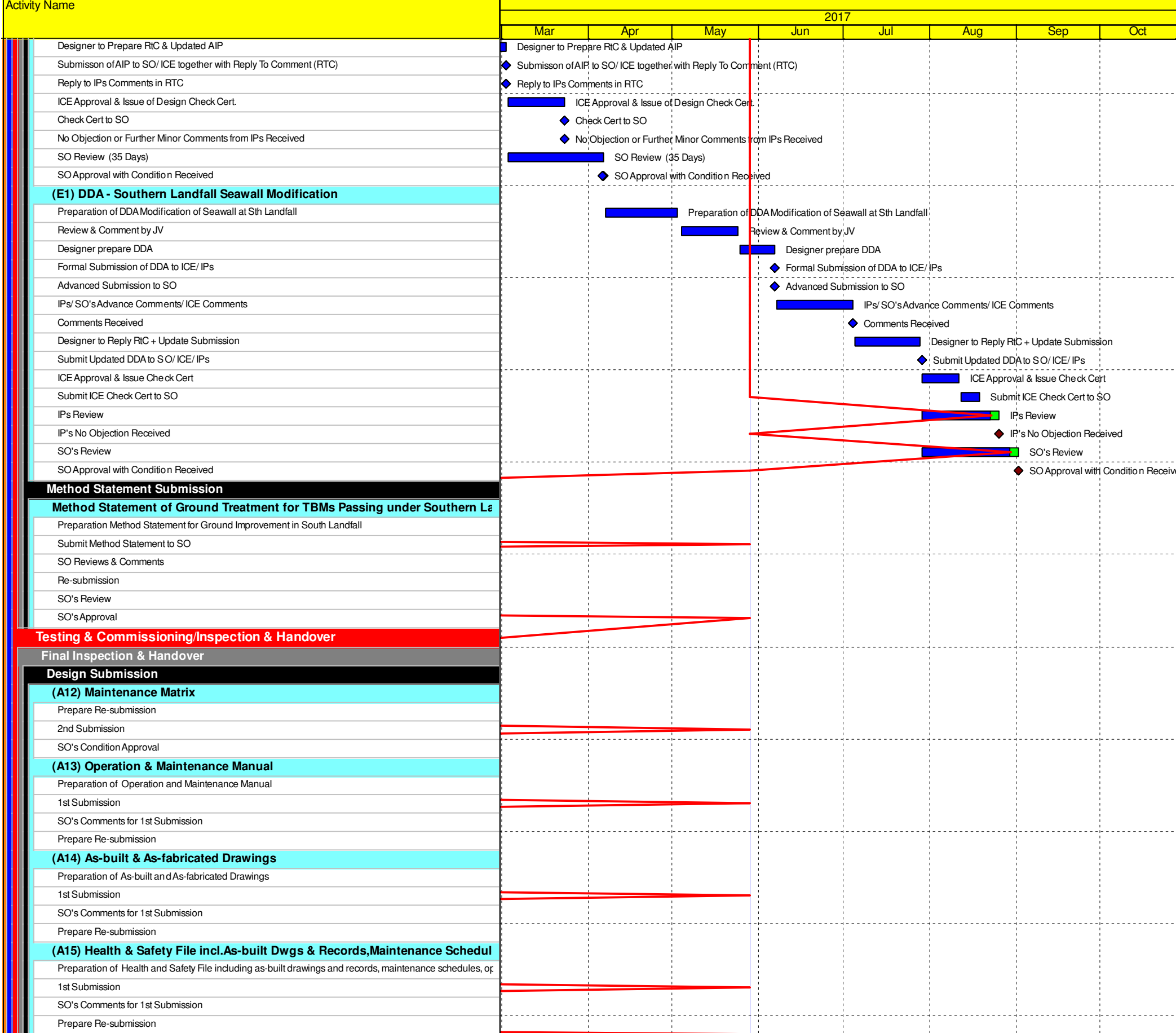
Date	Revision	Checked	Approved
12-Feb-14	TMCLKDBJEN/PRG/98507	WYu	SPa
08-Apr-14	TMCLKDBJEN/PRG/98507 Rev.B	SPa	WYu
28-Aug-14	TMCLKDBJEN/PRG/98507 Rev.C	CLa	WYu
30-Oct-15	TMCLKDBJEN/PRG/98507 Rev.F	WYu	

Activity Name	2017							
	Mar	Apr	May	Jun	Jul	Aug	Sep	Oct
Comments Received								
Designer to Reply RtC + Update Submission								
Submit Updated DDA to SO/ ICE/ IPs								
ICE Approval & Issue Check Cert								
Submit ICE Check Cert to SO								
IPs Review								
SO's Review								
Method Statement Submission								
Method Statement of Construction Methodology of C&C Tunnels								
Preparation Method Statement for C&C Tunnels								
Submit Method Statement to SO								
SO Reviews & Comments								
Re-submission								
SO's Review								
Construction								
Provision for TCSS/E&M for Stage 2								Provision for TCSS
South Retrieval Shaft								
Design Submission								
(F4) Gantry Crane Support/Foundations in Southern Landfall								
Designer to Reply RtC + Update Submission								
Submit Updated IFA to SO/ ICE/ IPs								
ICE Approval & Issue Check Cert								
IPs Review								
IP's No Objection Received								
SO's Review								
SO Approval with Condition Received								
Method Statement Submission								
Method Statement of Construction Methodology of Retrieval Shaft								
Preparation Method Statement for Retrieval Shaft								
Submit Method Statement to SO								
SO Reviews & Comments								
Re-submission								
SO's Review								
Construction								
Retrieval Shaft - Excavation - Soft by ramp								
Retrieval Shaft - Excavation - Soft by vertical mean (Fill material)								
Retrieval Shaft - Excavation - Soft (other than Fill)								
Retrieval Shaft - Temp. Slab/Prepare for TBM Breakthrough								
South Ventilation Building								
Design Submission								
(I1) DDA for South Vent.Bldg. GBP & Arch.Submission								
IPs Review								
IP's No Objection Received								
SO's Review								
SO Approval with Condition Received								
(I2) DDA for South Vent.Bldg. Foundation Design								
Review & Comment by JV								
Designer prepare DDA								
Formal Submission of DDA to ICE/ IPs								
Advanced Submission to SO								
IPs/ SO's Advance Comments/ ICE Comments								
Comments Received								
Designer to Reply RtC + Update Submission								
Submit Updated DDA to SO/ ICE/ IPs								
ICE Approval & Issue Check Cert								
Submit ICE Check Cert to SO								
IPs Review								
SO's Review								
(I2) DDA for South Vent.Bldg. Structural Design incl. Vent. Connections								
Review & Comment by JV								
Designer prepare DDA								
Formal Submission of DDA to ICE/ IPs								
Advanced Submission to SO								
IPs/ SO's Advance Comments/ ICE Comments								
Comments Received								
Designer to Reply RtC + Update Submission								
Submit Updated DDA to SO/ ICE/ IPs								
ICE Approval & Issue Check Cert								
IPs Review								
SO's Review								
(J1) DDA Temp.works for Construction of Sth.Vent.Bldg.								
Designer to Reply RtC + Update Submission								
Submit Updated DDA to SO/ ICE/ IPs								
ICE Approval & Issue Check Cert								
Submit ICE Check Cert to SO								
IPs Review								
IP's No Objection Received								
SO's Review								
SO Approval with Condition Received								
South Surface Roadworks, Utility & Drainage works								
Design Submission								
(E1) AIP - Southern Landfall Seawall Modification								

- Planned Bar
- Planned Bar - Critical
- ◆ Planned Milestone
- Progress bar
- ◆ Progress Milestone



Date	Revision	Checked	Approved
12-Feb-14	TMCLKDBJGEN.PRG.98507	WYu	SPo
08-Apr-14	TMCLKDBJGEN.PRG.98507 Rev.B	SPa	WYu
28-Aug-14	TMCLKDBJGEN.PRG.98507 Rev.C	CLa	WYu
30-Oct-15	TMCLKDBJGEN.PRG.98507 Rev.F	WYu	



- Planned Bar
- Planned Bar - Critical
- ◆ Planned Milestone
- Progress bar
- ◆ Progress Milestone



Date	Revision	Checked	Approved
12-Feb-14	TMCLKDBJGEN/PRG/98507	WYu	SPo
08-Apr-14	TMCLKDBJGEN/PRG/98507 Rev.B	SPa	WYu
28-Aug-14	TMCLKDBJGEN/PRG/98507 Rev.C	CLa	WYu
30-Oct-15	TMCLKDBJGEN/PRG/98507 Rev.F	WYu	