

Appendix I

Cumulative Statistics on  
Exceedances, Complaints,  
Notifications of Summons  
and Successful Prosecutions

**Table I1** *Cumulative Statistics on Exceedances*

<b>Monitoring Parameters</b>	<b>Action/Limit Level</b>	<b>Total No. recorded in this reporting quarter</b>	<b>Total No. recorded since project commencement</b>
1-Hr TSP	Action	2	68
	Limit	0	4
24-Hr TSP	Action	0	8
	Limit	0	4
Water Quality	Action	0	20
	Limit	0	1
Impact Dolphin Monitoring	Action	0	11
	Limit	1	13

**Table I2** *Cumulative Statistics on Complaints, Notifications of Summons and Successful Prosecutions*

<b>Reporting Period</b>	<b>Cumulative Statistics</b>		
	<b>Complaints</b>	<b>Notifications of Summons</b>	<b>Successful Prosecutions</b>
This Reporting Period (June 2018 to August 2018)	0	0	0
Total No. received since project commencement	16	1	0

Email  
message

Environmental  
Resources  
Management

**To** Ramboll Hong Kong, Limited (ENPO)

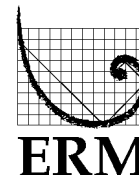
**From** ERM- Hong Kong, Limited

**Ref/Project number** Contract No. HY/2012/08 Tuen Mun–Chek Lap  
Kok Link–Northern Connection Sub-sea Tunnel  
Section

**Subject** Notification of Exceedance for Air Quality  
Impact Monitoring

**Date** 26 August 2018

16/F Berkshire House,  
25 Westlands Road  
Quarry Bay, Hong Kong  
Telephone: (852) 2271 3113  
Facsimile: (852) 2723 5660  
E-mail: jovy.tam@erm.com



---

Dear Sir or Madam,

Please find attached the Notification of Exceedance (NOE) of the following  
Log no.:

**0212330\_26August2018\_1hrTSP\_Station ASR1**

One Action Level Exceedance was recorded on 26 August 2018.

Regards,

A handwritten signature in black ink that reads "Jasmine".

Dr Jasmine Ng  
Environmental Team Leader

---

**CONFIDENTIALITY NOTICE**

This facsimile transmission is intended only for the use of the addressee and is confidential. If you are not the addressee it may be unlawful for you to read, copy, distribute, disclose or otherwise use the information in this facsimile. If you are not the intended recipient, please telephone or fax us.

---



ERM-Hong Kong, Limited

CONTRACT NO. HY/2012/08  
 TUEN MUN – CHEK LAP KOK LINK –  
 NORTHERN CONNECTION SUB-SEA TUNNEL SECTION

Air Quality Impact Monitoring  
 Notification of Exceedance

<b>Log No.</b>	0212330_26August2018_1hrTSP_Station ASR1 [Total No. of Exceedances = 1]	
<b>Date</b>	26 August 2018 (Measured) 31 August 2018 (Laboratory results received by ERM)	
<b>Monitoring Station</b>	ASR1, ASR5, ASR6, ASR10 and AQMS1	
<b>Parameter(s) with Exceedance(s)</b>	1-hr TSP	
<b>Action Levels</b>	24-hr TSP ( $\mu\text{g}/\text{m}^3$ )	ASR1 = 213 ASR5 = 238 AQMS1 = 213 ASR6 = 238 ASR10 = 214
	1-hr TSP ( $\mu\text{g}/\text{m}^3$ )	ASR1 = 331 ASR5 = 340 AQMS1 = 335 ASR6 = 338 ASR10 = 337
<b>Limit Levels</b>	1-hr TSP ( $\mu\text{g}/\text{m}^3$ )	500
	24-hr TSP ( $\mu\text{g}/\text{m}^3$ )	260
<b>Measured Levels</b>	Action Level Exceedance for 1-hr TSP is observed at ASR1 ( $417 \mu\text{g}/\text{m}^3$ ) during 1057 - 1157 hrs.	
<b>Works Undertaken (at the time of monitoring event)</b>	On 26 August 2018, no construction works were carried out on site.	
<b>Possible Reason for Action or Limit Level Exceedance(s)</b>	<p>The exceedance is unlikely to be due to the Project, in view of the following:</p> <ul style="list-style-type: none"> <li>• According to the construction information provided by the Contractor, no construction works were carried out on 26 August 2018.</li> <li>• The exceedances are unlikely to be due to the project as dust suppression measures were implemented properly on site. Water spraying was applied on site to prevent dust.</li> </ul> <p>Based on the above, the exceedances are unlikely to be due to the project.</p>	

<b>Actions Taken/ To Be Taken</b>	<p>According to the construction information provided by the Contractor, no construction works were carried out on 26 August 2018. Water spraying was applied to prevent dust. Photos taken during AQM were provided in Annex A. No significant dust impact was observed at ASR1. Dust suppression measures were properly implemented during the site inspections. Based on the above, no additional action is required.</p> <p>The Contractor has been reminded to implement the required mitigation measures as per the EP, approved EIA and Updated EM&amp;A Manual including watering to maintain all exposed road surfaces and dust sources wet, use of sprinklers for water spraying, covering the materials having the potential to create dust by clean tarpaulin, use of water truck and watering on all exposed soil within the Project site) throughout the construction period. The Contractor was also reminded to ensure all dust mitigation measures are provided at Portion N-A and Portion N-C, where the construction works are carried out.</p>
<b>Remarks</b>	<p>The monitoring results and the locations of air quality monitoring stations are attached.</p>



## Annex A Photos provided by the Contractor

\*Note: Photos taken on 26/8/2018



Water spraying was applied frequently on site. (Works Area Portion N-A)



Water spraying was applied frequently on site. (Works Area Portion N-A)



## Annex A Photos taken during AQM

\*Note: Photos taken on 26/8/2018



ASR1

**Meteorological Data for Impact Monitoring in the reporting period**

<b>Date (yy-mm-dd)</b>	<b>Time (24hrs)</b>	<b>Average of Wind Speed (m/s)</b>	<b>Average of Wind Direction(degree)</b>
18/08/26	0:00	1.3	281
18/08/26	1:00	0.9	301
18/08/26	2:00	0.9	287
18/08/26	3:00	0.9	316
18/08/26	4:00	1.3	326
18/08/26	5:00	0.9	298
18/08/26	6:00	0.4	305
18/08/26	7:00	0	-
18/08/26	8:00	0.9	16
18/08/26	9:00	0.9	3
18/08/26	10:00	1.3	20
18/08/26	11:00	2.7	18
18/08/26	12:00	2.2	311
18/08/26	13:00	1.8	297
18/08/26	14:00	2.2	287
18/08/26	15:00	1.3	290
18/08/26	16:00	0.9	231
18/08/26	17:00	1.3	126
18/08/26	18:00	2.2	96
18/08/26	19:00	2.2	83
18/08/26	20:00	1.8	91
18/08/26	21:00	2.2	91
18/08/26	22:00	0.9	88
18/08/26	23:00	1.3	92



TMCLKL	HY/2012/08	26/8/2018	AQMS1	Sunny	9:04	1-hour TSP	87	ug/m3
TMCLKL	HY/2012/08	26/8/2018	AQMS1	Sunny	10:06	1-hour TSP	50	ug/m3
TMCLKL	HY/2012/08	26/8/2018	AQMS1	Sunny	11:08	1-hour TSP	120	ug/m3
TMCLKL	HY/2012/08	26/8/2018	ASR1	Sunny	8:53	1-hour TSP	169	ug/m3
TMCLKL	HY/2012/08	26/8/2018	ASR1	Sunny	9:55	1-hour TSP	200	ug/m3
TMCLKL	HY/2012/08	26/8/2018	ASR1	Sunny	10:57	1-hour TSP	417	ug/m3
TMCLKL	HY/2012/08	26/8/2018	ASR10	Sunny	8:20	1-hour TSP	63	ug/m3
TMCLKL	HY/2012/08	26/8/2018	ASR10	Sunny	9:22	1-hour TSP	39	ug/m3
TMCLKL	HY/2012/08	26/8/2018	ASR10	Sunny	10:24	1-hour TSP	39	ug/m3
TMCLKL	HY/2012/08	26/8/2018	ASR5	Sunny	8:42	1-hour TSP	177	ug/m3
TMCLKL	HY/2012/08	26/8/2018	ASR5	Sunny	9:44	1-hour TSP	86	ug/m3
TMCLKL	HY/2012/08	26/8/2018	ASR5	Sunny	10:46	1-hour TSP	103	ug/m3
TMCLKL	HY/2012/08	26/8/2018	ASR6	Sunny	8:30	1-hour TSP	121	ug/m3
TMCLKL	HY/2012/08	26/8/2018	ASR6	Sunny	9:32	1-hour TSP	51	ug/m3
TMCLKL	HY/2012/08	26/8/2018	ASR6	Sunny	10:34	1-hour TSP	49	ug/m3
TMCLKL	HY/2012/08	26/8/2018	AQMS1	Sunny	12:10	24-hour TSP	51	ug/m3
TMCLKL	HY/2012/08	26/8/2018	ASR1	Sunny	11:59	24-hour TSP	90	ug/m3
TMCLKL	HY/2012/08	26/8/2018	ASR10	Sunny	11:26	24-hour TSP	41	ug/m3
TMCLKL	HY/2012/08	26/8/2018	ASR5	Sunny	11:48	24-hour TSP	54	ug/m3
TMCLKL	HY/2012/08	26/8/2018	ASR6	Sunny	11:36	24-hour TSP	57	ug/m3

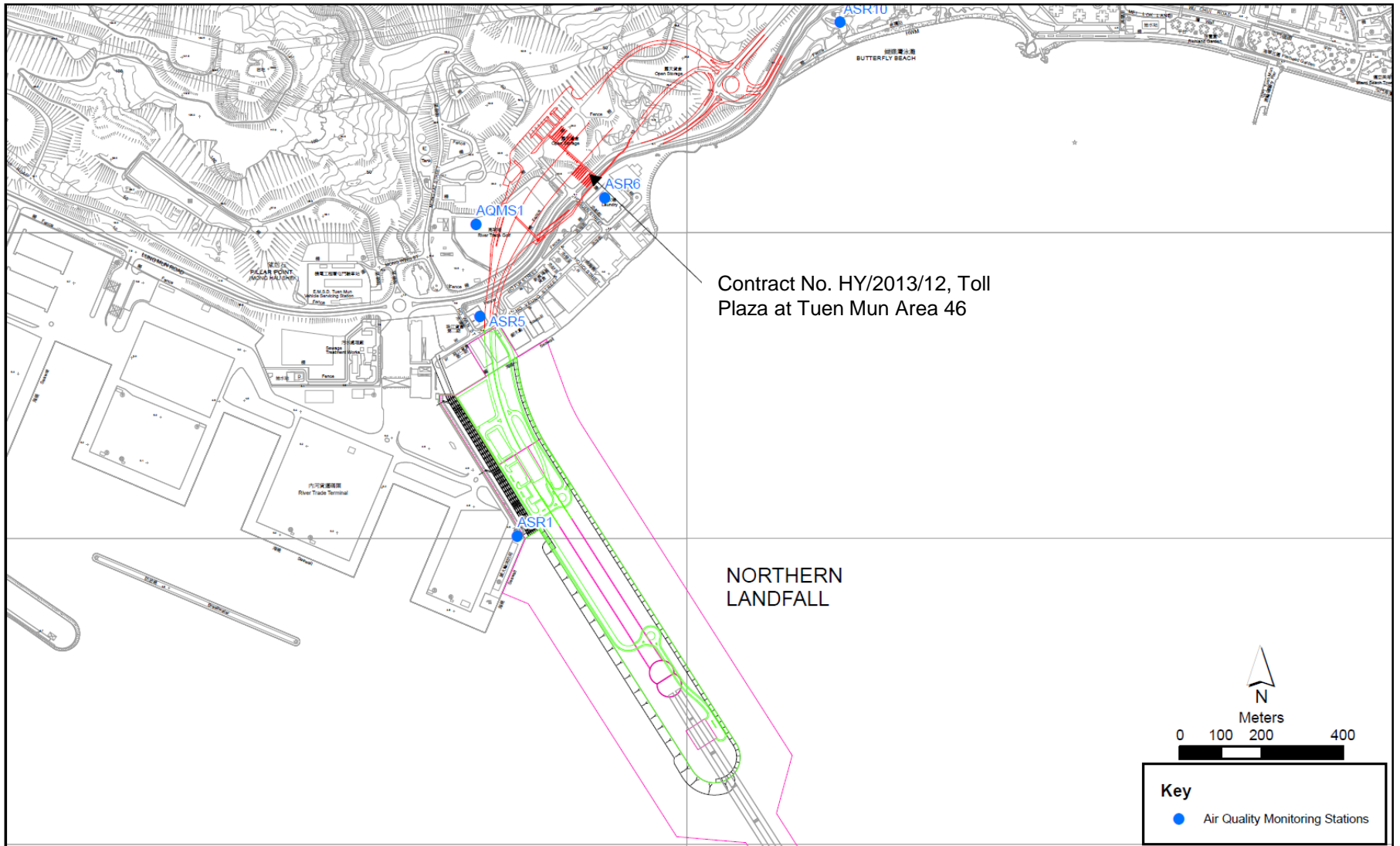


Figure 1

Email  
message

Environmental  
Resources  
Management

**To** Ramboll Hong Kong, Limited (ENPO)

**From** ERM- Hong Kong, Limited

**Ref/Project number** Contract No. HY/2012/08 Tuen Mun–Chek Lap  
Kok Link–Northern Connection Sub-sea Tunnel  
Section

**Subject** Notification of Exceedance for Air Quality  
Impact Monitoring

**Date** 29 August 2018

16/F Berkshire House,  
25 Westlands Road  
Quarry Bay, Hong Kong  
Telephone: (852) 2271 3113  
Facsimile: (852) 2723 5660  
E-mail: jovy.tam@erm.com



**ERM**

---

Dear Sir or Madam,

Please find attached the Notification of Exceedance (NOE) of the following  
Log no.:

**0212330\_29August2018\_1hrTSP\_Station ASR1**

One Action Level Exceedance was recorded on 29 August 2018.

Regards,

A handwritten signature in cursive script that reads "Jasmine".

Dr Jasmine Ng  
Environmental Team Leader

---

**CONFIDENTIALITY NOTICE**

This facsimile transmission is intended only for the use of the addressee and is confidential. If you are not the addressee it may be unlawful for you to read, copy, distribute, disclose or otherwise use the information in this facsimile. If you are not the intended recipient, please telephone or fax us.

---



ERM-Hong Kong, Limited

CONTRACT NO. HY/2012/08  
 TUEN MUN – CHEK LAP KOK LINK –  
 NORTHERN CONNECTION SUB-SEA TUNNEL SECTION

Air Quality Impact Monitoring  
 Notification of Exceedance

Log No.	0212330_29August2018_1hrTSP_Station ASR1 [Total No. of Exceedances = 1]	
Date	29 August 2018 (Measured) 6 September 2018 (Laboratory results received by ERM)	
Monitoring Station	ASR1, ASR5, ASR6, ASR10 and AQMS1	
Parameter(s) with Exceedance(s)	1-hr TSP	
Action Levels	24-hr TSP ( $\mu\text{g}/\text{m}^3$ )	ASR1 = 213 ASR5 = 238 AQMS1 = 213 ASR6 = 238 ASR10 = 214
	1-hr TSP ( $\mu\text{g}/\text{m}^3$ )	ASR1 = 331 ASR5 = 340 AQMS1 = 335 ASR6 = 338 ASR10 = 337
Limit Levels	1-hr TSP ( $\mu\text{g}/\text{m}^3$ )	500
	24-hr TSP ( $\mu\text{g}/\text{m}^3$ )	260
Measured Levels	Action Level Exceedance for 1-hr TSP is observed at ASR1 ( $403 \mu\text{g}/\text{m}^3$ ) during 1336 - 1436 hrs.	
Works Undertaken (at the time of monitoring event)	On 29 August 2018, TBM tunnel works were carried out on site.	
Possible Reason for Action or Limit Level Exceedance(s)	<p>The exceedance is unlikely to be due to the Project, in view of the following:</p> <ul style="list-style-type: none"> <li>• According to the construction information provided by the Contractor, TBM tunnel works were carried out on site. No ground construction works were carried out.</li> <li>• The exceedance is unlikely to be due to the project as dust suppression measures were implemented properly on site. Water spraying was applied on site to prevent dust.</li> </ul> <p>Based on the above, the exceedances are unlikely to be due to the project.</p>	

<b>Actions Taken/ To Be Taken</b>	<p>According to the construction information provided by the Contractor, no ground construction works were carried out on 29 August 2018. Site inspection was also carried out by the ET on 29 August 2018. Water spraying was applied to prevent dust. No significant dust impact was observed on site. Photos taken during AQM were provided in Annex A. No significant dust impact was observed at ASR1. Dust suppression measures were properly implemented during the site inspections. Based on the above, no additional action is required.</p> <p>The Contractor has been reminded to implement the required mitigation measures as per the EP, approved EIA and Updated EM&amp;A Manual including watering to maintain all exposed road surfaces and dust sources wet, use of sprinklers for water spraying, covering the materials having the potential to create dust by clean tarpaulin, use of water truck and watering on all exposed soil within the Project site) throughout the construction period. The Contractor was also reminded to ensure all dust mitigation measures are provided at Portion N-A and Portion N-C, where the construction works are carried out.</p>
<b>Remarks</b>	<p>The monitoring results and the locations of air quality monitoring stations are attached.</p>



## Annex A Photos taken during site inspection

\*Note: Photos taken on 29/8/2018



Water spraying was applied to prevent dust.



Water spraying was applied to prevent dust.



**Annex A      Photos taken during AQM**

\*Note: Photos taken on 29/8/2018



ASR1

TMCLKL	HY/2012/08	29/8/2018	AQMS1	Rainy	13:48	1-hour TSP	158	ug/m3
TMCLKL	HY/2012/08	29/8/2018	AQMS1	Rainy	14:50	1-hour TSP	60	ug/m3
TMCLKL	HY/2012/08	29/8/2018	AQMS1	Rainy	15:52	1-hour TSP	57	ug/m3
TMCLKL	HY/2012/08	29/8/2018	ASR1	Rainy	13:36	1-hour TSP	403	ug/m3
TMCLKL	HY/2012/08	29/8/2018	ASR1	Rainy	14:38	1-hour TSP	87	ug/m3
TMCLKL	HY/2012/08	29/8/2018	ASR1	Rainy	15:40	1-hour TSP	72	ug/m3
TMCLKL	HY/2012/08	29/8/2018	ASR10	Rainy	13:02	1-hour TSP	129	ug/m3
TMCLKL	HY/2012/08	29/8/2018	ASR10	Rainy	14:04	1-hour TSP	54	ug/m3
TMCLKL	HY/2012/08	29/8/2018	ASR10	Rainy	15:06	1-hour TSP	46	ug/m3
TMCLKL	HY/2012/08	29/8/2018	ASR5	Rainy	13:24	1-hour TSP	327	ug/m3
TMCLKL	HY/2012/08	29/8/2018	ASR5	Rainy	14:26	1-hour TSP	64	ug/m3
TMCLKL	HY/2012/08	29/8/2018	ASR5	Rainy	15:28	1-hour TSP	46	ug/m3
TMCLKL	HY/2012/08	29/8/2018	ASR6	Rainy	13:13	1-hour TSP	125	ug/m3
TMCLKL	HY/2012/08	29/8/2018	ASR6	Rainy	14:15	1-hour TSP	69	ug/m3
TMCLKL	HY/2012/08	29/8/2018	ASR6	Rainy	15:17	1-hour TSP	42	ug/m3
TMCLKL	HY/2012/08	29/8/2018	AQMS1	Rainy	16:54	24-hour TSP	46	ug/m3
TMCLKL	HY/2012/08	29/8/2018	ASR1	Rainy	16:42	24-hour TSP	58	ug/m3
TMCLKL	HY/2012/08	29/8/2018	ASR10	Rainy	16:08	24-hour TSP	35	ug/m3
TMCLKL	HY/2012/08	29/8/2018	ASR5	Rainy	16:30	24-hour TSP	47	ug/m3
TMCLKL	HY/2012/08	29/8/2018	ASR6	Rainy	16:19	24-hour TSP	62	ug/m3



<b>Meteorological Data for Impact Monitoring in the reporting period</b>			
<b>Date (yy-mm-dd)</b>	<b>Time (24hrs)</b>	<b>Average of Wind Speed (m/s)</b>	<b>Average of Wind Direction(degree)</b>
18/08/29	0:00	1.3	132
18/08/29	1:00	1.3	133
18/08/29	2:00	1.3	140
18/08/29	3:00	0.4	351
18/08/29	4:00	1.3	126
18/08/29	5:00	0.4	1
18/08/29	6:00	0.4	3
18/08/29	7:00	0	-
18/08/29	8:00	1.8	199
18/08/29	9:00	0.9	235
18/08/29	10:00	0.9	220
18/08/29	11:00	1.3	224
18/08/29	12:00	1.8	290
18/08/29	13:00	0.9	140
18/08/29	14:00	2.2	214
18/08/29	15:00	1.8	200
18/08/29	16:00	1.8	284
18/08/29	17:00	0.9	294
18/08/29	18:00	0.9	2
18/08/29	19:00	0.9	344
18/08/29	20:00	0.9	339
18/08/29	21:00	0.4	294
18/08/29	22:00	0.4	299
18/08/29	23:00	0.9	147

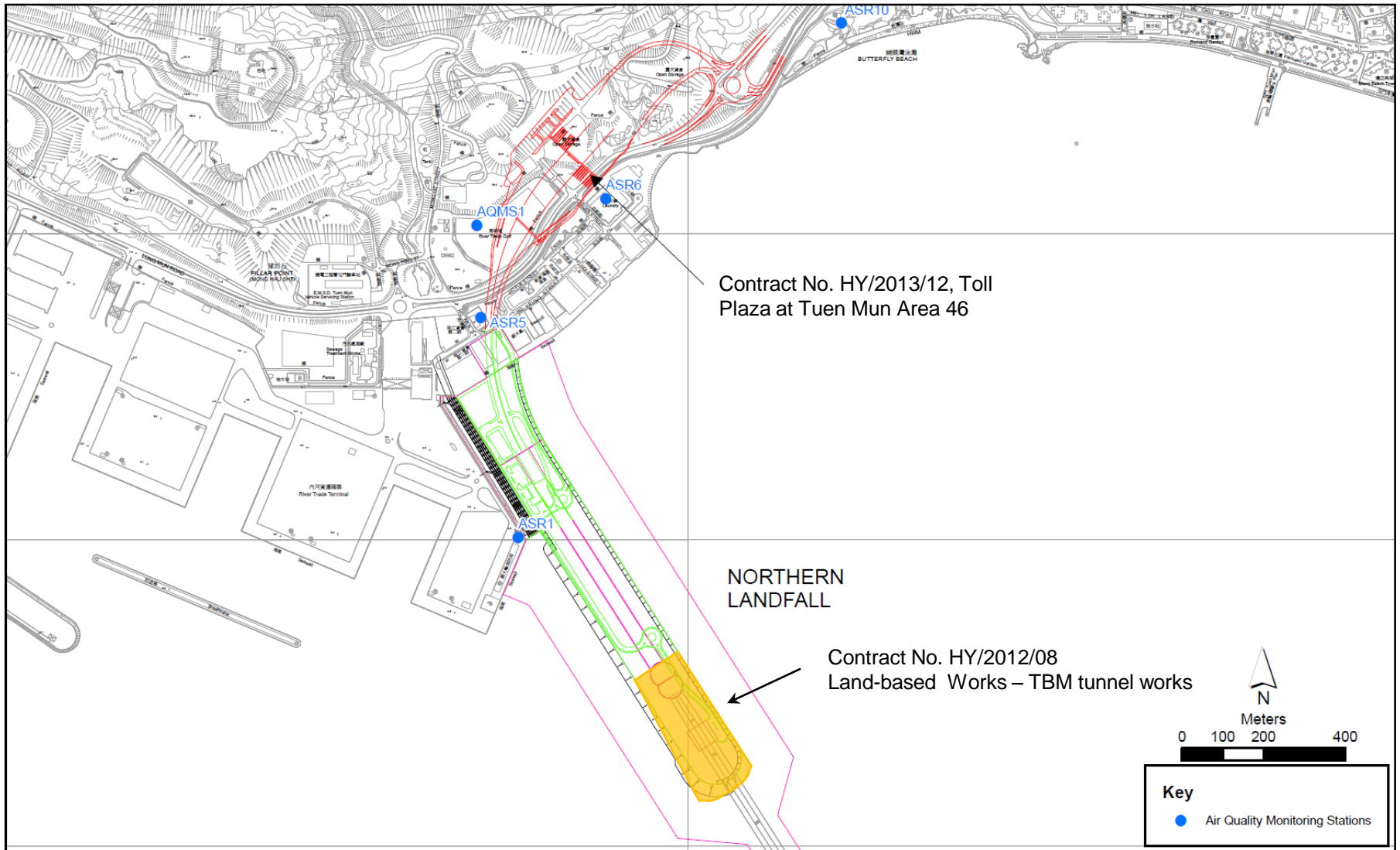


Figure 1

Indicative Construction Works Area on 29 August 2018

Email  
message

**Environmental  
Resources  
Management**

**To** Ramboll Hong Kong, Limited (ENPO)

**From** ERM- Hong Kong, Limited

**Ref/Project number** Contract No. HY/2012/08 Tuen Mun–Chek Lap  
Kok Link–Northern Connection Sub-sea Tunnel  
Section

**Subject** Notification of Exceedance for Impact Dolphin  
Monitoring

**Date** 14 September 2018

2507, 25/F One Harbourfront  
18 Tak Fung Street  
Hung Hom, Kowloon  
Hong Kong  
Telephone: (852) 2271 3000  
Facsimile: (852) 2723 5660



**ERM**

---

Dear Sir or Madam,

Please find attached the Notification of Exceedance (NOE) of the following  
Log no.:

0212330\_Jun2018/Aug2018\_dolphin\_STG&ANI\_NEL&NWL

A total of one limit level exceedance was recorded in the quarterly impact  
dolphin monitoring data between June 2018 and August 2018.

Regards,



Dr Jasmine Ng  
Environmental Team Leader

---

**CONFIDENTIALITY NOTICE**

This facsimile transmission is intended only for the use of the addressee and is confidential. If you are not the addressee it may be unlawful for you to read, copy, distribute, disclose or otherwise use the information in this facsimile. If you are not the intended recipient, please telephone or fax us.

---



**ERM-Hong Kong, Limited**

**CONTRACT NO. HY/2012/08**

**TUEN MUN – CHEK LAP KOK LINK –  
NORTHERN CONNECTION SUB-SEA TUNNEL SECTION**

**Impact Dolphin Monitoring  
Notification of Exceedance**

<b>Log No.</b>	0212330_ Jun/Aug2018_dolphin_STG&ANI_NEL&NWL [Total No. of Exceedances = 1 Limit Level Exceedance]	
<b>Date</b>	June to August 2018 (monitored) 2 October 2018 (results received by ERM)	
<b>Monitoring Area</b>	Northeast Lantau (NEL) and Northwest Lantau (NWL)	
<b>Parameter(s) with Exceedance(s)</b>	Quarterly encounter rate of dolphin sightings (STG) Quarterly encounter rate of total number of dolphins (ANI)	
<b>Action Levels</b>	North Lantau Social cluster	NEL: STG < 4.2 & ANI < 15.5 or NWL: STG < 6.9 & ANI < 31.3
<b>Limit Levels</b>		NEL: STG < 2.4 & ANI < 8.9 and NWL: STG < 3.9 & ANI < 17.9
<b>Recorded Levels</b>	NEL	STG = 0 & ANI = 0
	NWL	STG = 1.16 & ANI = 2.87
	One Limit Level Exceedance was recorded in the quarterly impact dolphin monitoring at NEL and NWL between June and August 2018. The exceedance was reported in the approved <i>Fifty-eighth Monthly EM&amp;A Report</i> dated 12 September 2018.	
<b>Statistical Analyses</b>	<p>Further to the review of the available and relevant dolphin monitoring data in the EM&amp;A programme by this Contract, statistical analyses were conducted as follows:</p> <ul style="list-style-type: none"> <li>• A two-way ANOVA with repeated measures and unequal sample size was conducted using Period (2 levels: baseline vs impact – present impact quarter, June to August 2018) and Location (2 levels: NEL and NWL) as fixed factors to examine whether there were any significant differences in the average encounter rates between the baseline and present impact monitoring quarter. By setting <math>\alpha = 0.05</math> as the significance level in the statistical tests, significant differences in STG (<math>p = 0.0022</math>) and ANI (<math>p = 0.0144</math>) were detected between Periods.</li> <li>• A two-way ANOVA with repeated measures and unequal sample size was conducted using Cumulative Period (2 levels: baseline vs impact – cumulative quarters, December 2012 to August 2018) and Location (2 levels: NEL and NWL) as fixed factors to examine whether there were any significant differences in the average encounter rates between the baseline and cumulative impact monitoring quarter. By setting <math>\alpha = 0.00001</math> as the significance level in the statistical tests, significant difference in STG (<math>p = 0.000000</math>) and in ANI (<math>p = 0.000000</math>) between Cumulative Period and Location were detected.</li> </ul> <p>*Note: The commencement date under <i>Contract No. HY/2012/08</i> is 1 November 2013.</p>	
<b>Works Undertaken (in the monitoring quarter)</b>	In the quarter between June and August 2018, no marine works was undertaken under Contract No. HY/2012/08.	

<p><b>Possible Reason for Action or Limit Level Exceedance(s)</b></p>	<p>The potential factors that may have contributed to the observed exceedance are reviewed below:</p> <ul style="list-style-type: none"> <li>• Blocking of CWD travelling corridor: The <i>Monitoring of Marine Mammals in Hong Kong Waters (2017 – 18)</i> <sup>(1)</sup> reported that dolphin usage and traveling activities to the northern side of the airport (dolphin traveling corridor) are affected by frequent high-speed ferry traffic from Sky Pier (not related to this Contract), which is likely a major factor resulting in the decrease in dolphin abundances in North Lantau.</li> <li>• Marine works of the Contract: As per the findings from the EIA report (<i>Section 8.11.9</i>), the major influences on the Chinese White Dolphin (CWD) <i>Sousa chinensis</i> under this Contract are marine traffics, reclamation and dredging works. The Contractor implemented the marine traffic control in the reporting period as per the requirements in the <i>EP-354/2009/D</i> and the updated <i>EM&amp;A Manual</i>. Most of the vessels of this Contract also worked within the site boundary, in which the area is seldom used by CWD. Disturbance from vessels of this Contract is considered minor. Seawall enhancement works and the seawall construction and filling works were completed on 19 December 2017. During this quarter of dolphin monitoring, no adverse impact on CWD due to the activities under this Contract was observed.</li> </ul> <p>In view of the above, marine ecological mitigation measures were considered properly implemented, and thus no unacceptable impact on CWD or its habitat was associated with this Contract in this quarter.</p>
<p><b>Actions Taken/ To Be Taken</b></p>	<p>In the quarter between June and August 2018, no marine based works were carried out.</p> <p>The existing mitigation measures are recommended to be continuously implemented. Furthermore, it is also recommended to reduce the vessels for marine works as much as possible. The ET will monitor for future trends in exceedance(s).</p> <p>A joint team meeting was held on 4 September 2018 for discussion on CWD trend, with attendance of ENPO, Representatives of Resident Site Staff (RSS), Representatives of Environmental Teams (ETs) for Contract No. HY/2013/01, HY/2011/03, HY/2012/07 and HY/2012/08. The discussion/recommendation as recorded in the minutes of the meeting, which might be relevant to this Contract are summarized below. It was concluded that the HZMB works is one of the contributing factors affecting the dolphins. It was also concluded the contribution of impacts due to the HZMB works as a whole (or individual marine contracts) cannot be quantified or separate from the other stress factors. ENPO presented the interim CWD survey results in mainland waters obtained from Hong Kong-Zhuhai-Macao Bridge Authority that some CWDs that previously more often sighted in Hong Kong waters have expanded their ranges into mainland waters, and some with reduced usage in Hong Kong waters, while they are partially accounted for the local decline. It was reminded that the ETs shall keep reviewing the implementation status of the dolphin related mitigation measures and remind the contractors to ensure the relevant measures are fully implemented. The ETs were also reminded to update the Brothers Marine Park (BMP) boundary in the Regular Marine Travel Route Plan. It was recommended that the marine works of HZMB projects should be completed as soon as possible to reduce the overall duration of impacts and allow the dolphins population to recover as early as possible. The participants were also reminded that the protection measures (e.g. speed limit control) for the BMP shall be implemented so as to provide a better habitat for dolphin recovery. It is noted that even though marine vessels may moor within the mooring site of BMP, commercial activities including loading / unloading / transshipment are not allowed except a permit is obtained. The HZMB works vessels were recommended to avoid the BMP. It was also recommended that the marine works footprint and vessels for the marine works should be reduced as much as possible, and vessels idling / mooring in other part of the North Lantau shall be avoided whenever possible.</p> <p>Dolphin specialists of the Projects confirmed that the CWD sighting nearby north of Sha Chau and Lung Kwu Chau Marine Park has significantly declined. The reason for the decline was likely related to the re-routing of high-speed ferry from Sky Pier. The CWDs in the area should be closely followed.</p>
<p><b>Remarks</b></p>	<p>The results of impact dolphin monitoring, the status of implemented marine ecological mitigation measures are documented in the approved <i>Fifty-sixth to Fifty-eighth Monthly EM&amp;A Reports</i>.</p>

(1) Hung S K Y (2017). Prepared for AFCD. Available at: [https://www.afcd.gov.hk/english/conservation/con\\_mar\\_chi/con\\_mar\\_chi\\_chi/files/Final\\_Report\\_2016\\_17.pdf](https://www.afcd.gov.hk/english/conservation/con_mar_chi/con_mar_chi_chi/files/Final_Report_2016_17.pdf)