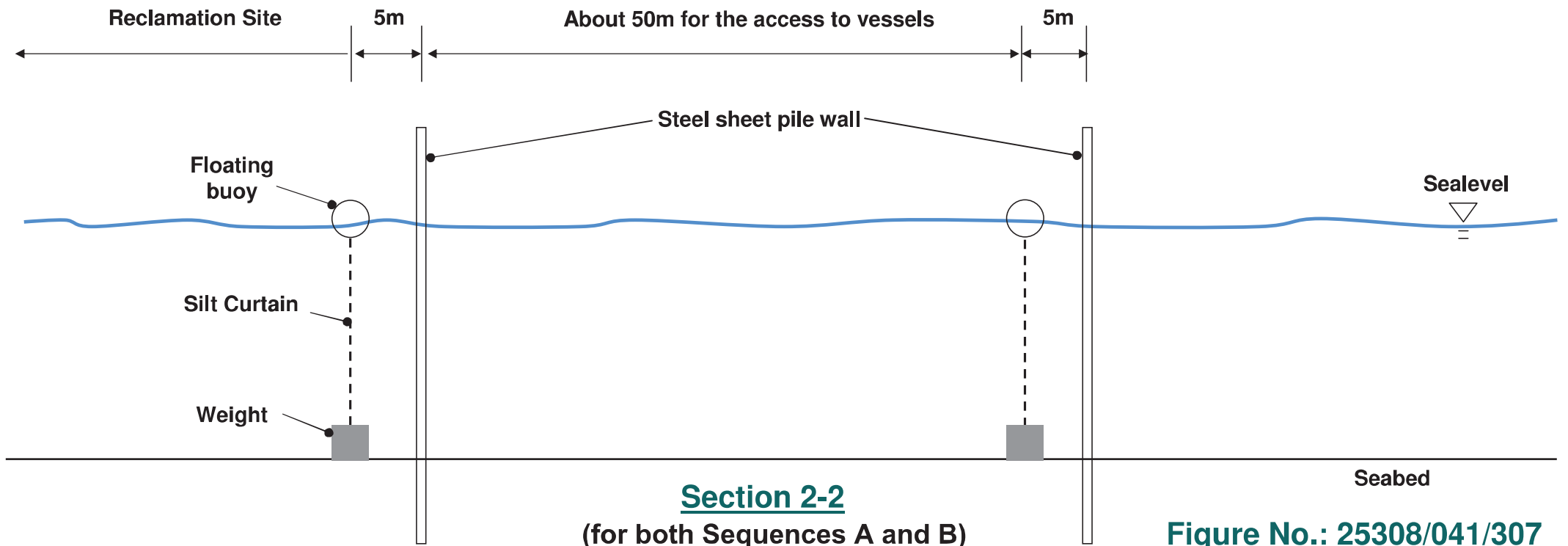


**Section 1-1**

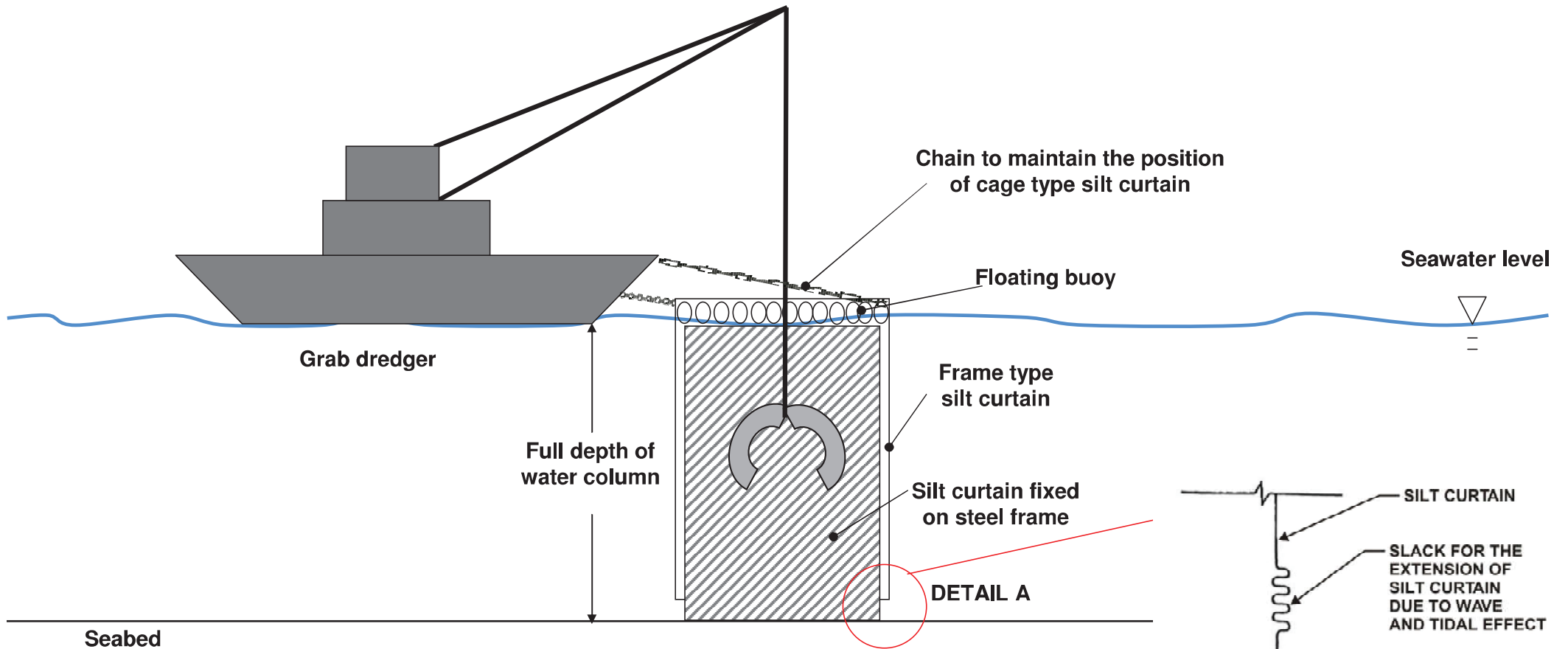
(for both Sequences A and B)



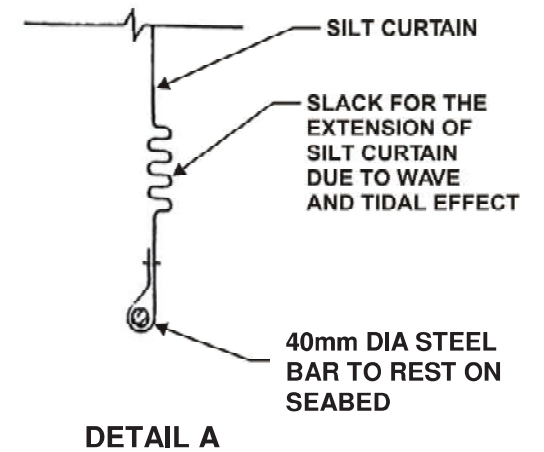
**Section 2-2**

(for both Sequences A and B)

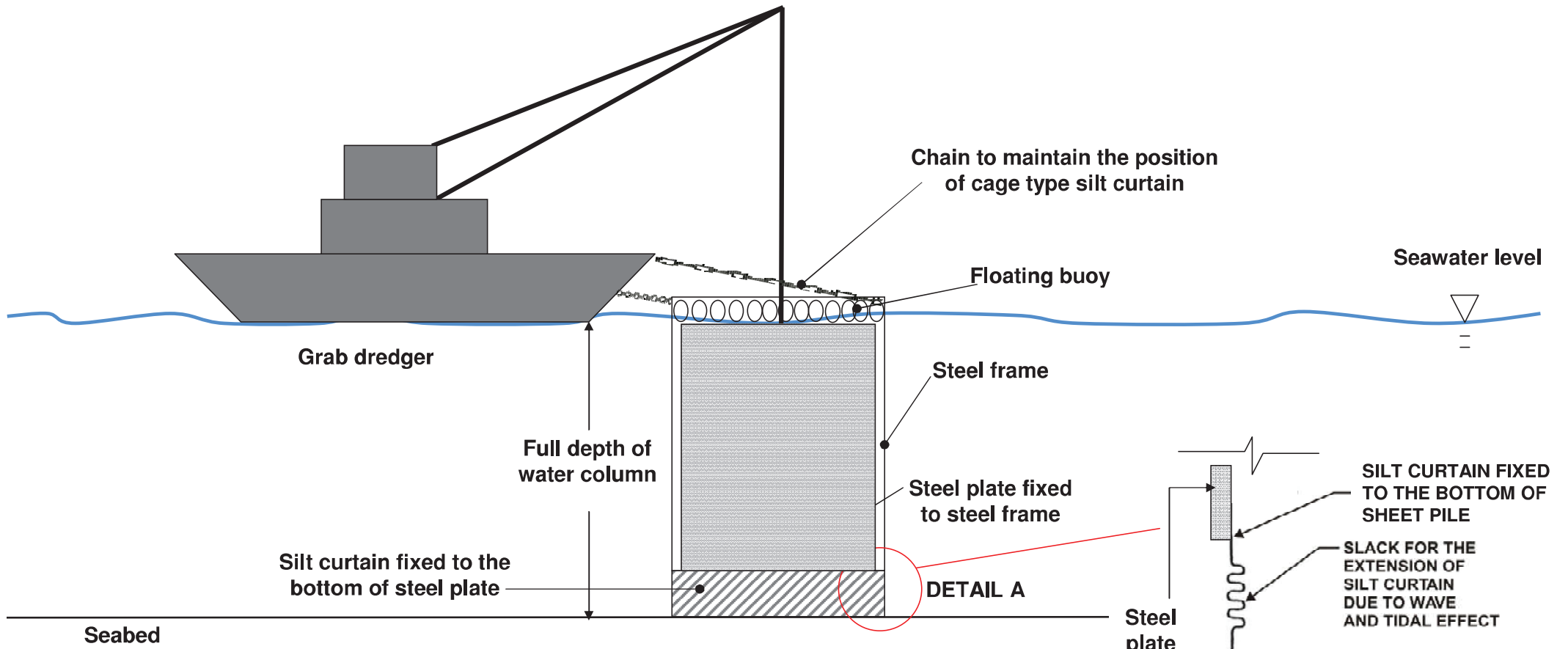
**Figure No.: 25308/041/307**



**Additional Cage Type Silt Curtain for Grab Dredgers**  
 (for general application)

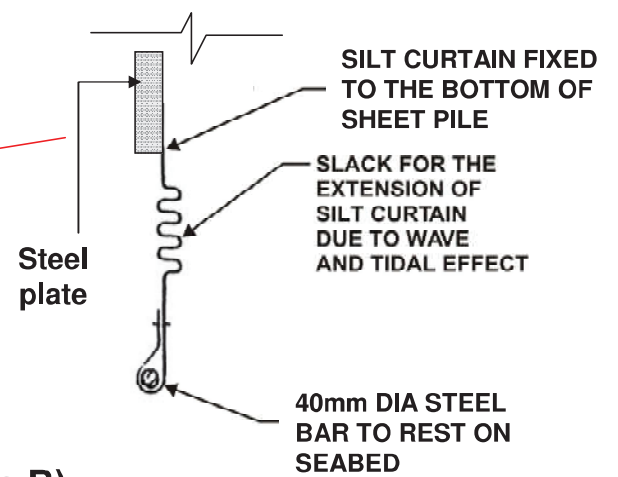


**Figure No.: 25308/041/308**

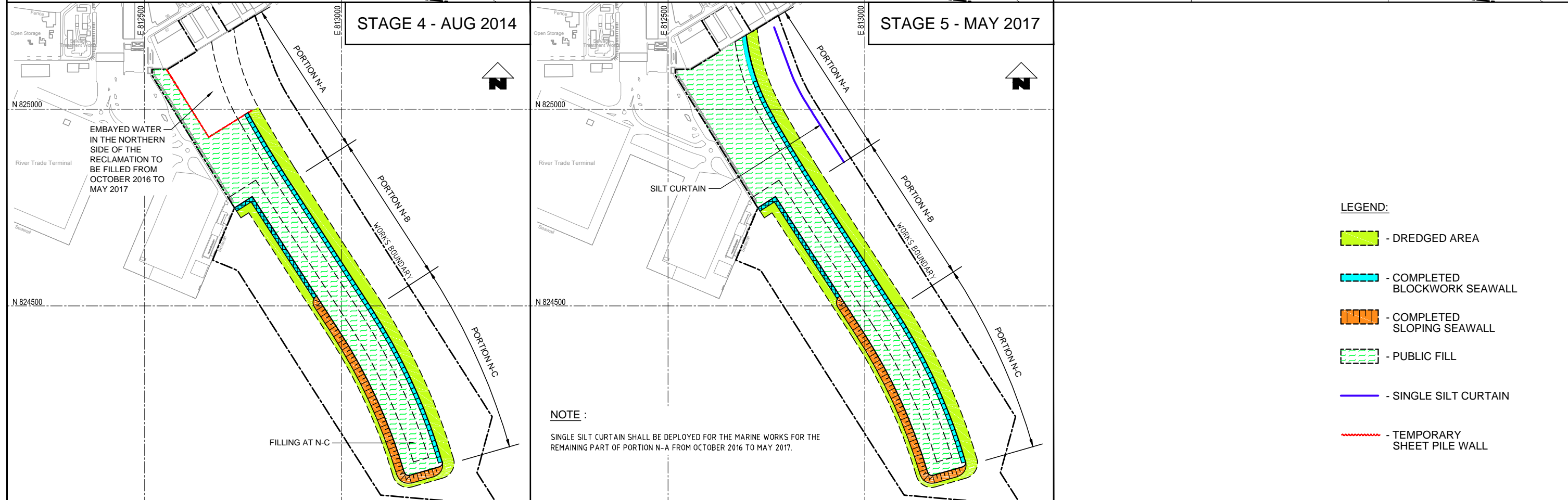
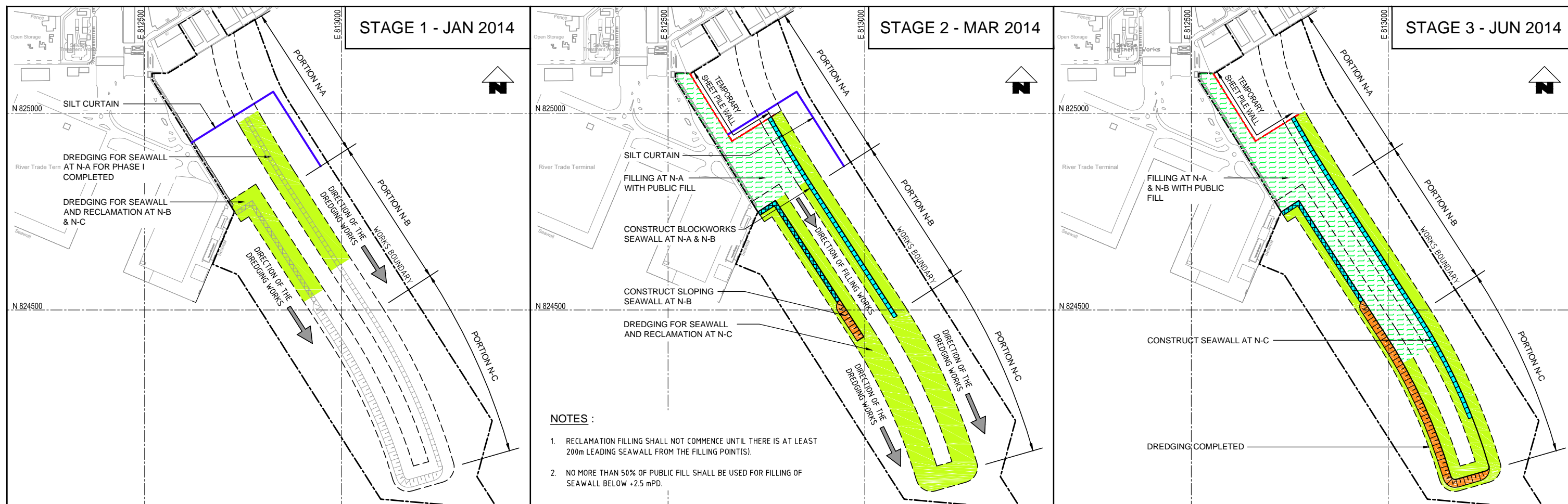


**Additional Cage Type Silt Curtain (with Steel Enclosure) for Grab Dredgers**

**(for HKBCF and TM-CLKL (southern landfall) under Sequence B)**



**DETAIL A**



- LEGEND:**
- DREDGED AREA
  - COMPLETED BLOCKWORK SEAWALL
  - COMPLETED SLOPING SEAWALL
  - PUBLIC FILL
  - SINGLE SILT CURTAIN
  - TEMPORARY SHEET PILE WALL

Rev.	Description	Date	Checked
C	FURTHER ESS COMMENTS ADDED	24SEP13	PKV
B	ESS COMMENTS ADDED	23SEP13	PKV
A	FIRST ISSUE	09SEP13	MHo

Designed By: AAm  
 Drawn By: KC  
 Approved By: SPo  
 Date: 09SEP2013

Main Contractor: **DRAGAGES HONGKONG** (Member of the Bouygues Construction group) and **BOUYGUES** (Member of the Bouygues Construction group)

Client: **HIGHWAYS DEPARTMENT**

Contractor's Designer: **ARUP** Ove Arup & Partners Hong Kong Limited

Project: Contract No. HY/2012/08  
 Tuen Mun - Chek Lap Kok Link - Northern Connection Sub-Sea Tunnel Section

Drawing Title: **Figure 1**

Drawing no.: TMCLKL8-DBJ-NTH-DWG-00132

Scale: 1:10000 @ A3

CADD Ref.: TMCLKL8-DBJ-NTH-DWG-00132-DFT-C

Issue Status: DFT (DRAFT)

Revision: C