

Ref: File by: jerry.wong 23-Jan-18
 PATH: Y:\1010\SS\NS\CA Drawings\C4 Drawings\C4_Drawing (2018_01_02)\Architectural drawings - DSN\60240249_C4_7061.dgn
 Project Management Initials: Designer: KATH Checked: SYLC Approved: CWN ISO A1 594mm x 841mm
 01/11/18



AECOM

PROJECT
TUEN MUN - CHEK LAP KOK LINK

CONTRACT TITLE
TUEN MUN - CHEK LAP KOK LINK - NORTHERN CONNECTION TUNNEL BUILDINGS, ELECTRICAL AND MECHANICAL WORKS

CLIENT
路政署
HIGHWAYS DEPARTMENT
港務局
Hong Kong - Zhuhai - Macao Bridge
Hong Kong Project Management Office

CONSULTANT
AECOM Asia Company Ltd.
www.aecom.com

SUB-CONSULTANTS

Figure 1.2a

ISSUE/REVISION

NO.	DATE	DESCRIPTION	CHK.
A	JAN.18	TENDER ADDENDUM NO.1	SYLC
-	DEC.17	TENDER DRAWING	SYLC

STATUS

SCALE
A1 1:2500

DIMENSION UNIT
MILLIMETRES

KEY PLAN

PROJECT NO.
60240249

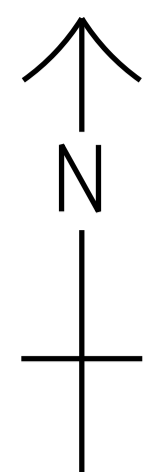
CONTRACT NO.
HY/2017/10

SHEET TITLE
ZONING PLAN (SHEET 1)

SHEET NUMBER
60240249/C4/7061A

This drawing has been prepared for the use of AECOM's client. It may not be used, modified, reproduced or distributed without the prior written consent of AECOM. AECOM accepts no responsibility for any party that uses or relies on this drawing without AECOM's express written consent. Do not scale this document. All measurements must be obtained from the master drawings.

Pld File by: jerrywong 15-Jan-18
 PATH: T:\TOTO RSS\SL\C4 Drawings\C4 Drawing (2018_01_02)\Architectural Drawings - DGN\60240249_C4_7062.dgn
 Project Management Initials: Designer: KATH Checked: SYLC Approved: CWN ISO A1 594mm x 841mm
 OMS
 16/1/18



AECOM

PROJECT
 項目
TUEN MUN - CHEK LAP KOK LINK

CONTRACT TITLE
 TUEN MUN - CHEK LAP KOK LINK - NORTHERN CONNECTION TUNNEL BUILDINGS, ELECTRICAL AND MECHANICAL WORKS

CLIENT
 業主

 路政署 HIGHWAYS DEPARTMENT
 港珠澳大橋香港工程管理局
 Hong Kong - Zhuhai - Macao Bridge
 Hong Kong Project Management Office

CONSULTANT
 工程顧問公司
 AECOM Asia Company Ltd.
 www.aecom.com

SUB-CONSULTANTS
 分判工程顧問公司

Figure 1.2b

ISSUE/REVISION
 修訂

I/R	DATE	DESCRIPTION	CHK.
修訂	日期	修訂描述	核對
A	JAN.18	TENDER ADDENDUM NO.1	SYLC
-	DEC.17	TENDER DRAWING	SYLC

STATUS
 階段

SCALE
 比例
 A1 1 : 2500

DIMENSION UNIT
 尺寸單位
 MILLIMETRES

KEY PLAN
 索引圖

PROJECT NO.
 項目編號
 60240249

CONTRACT NO.
 合約編號
 HY/2017/10

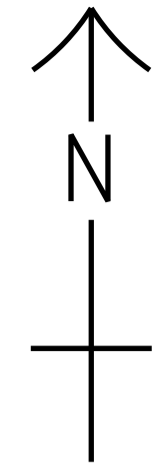
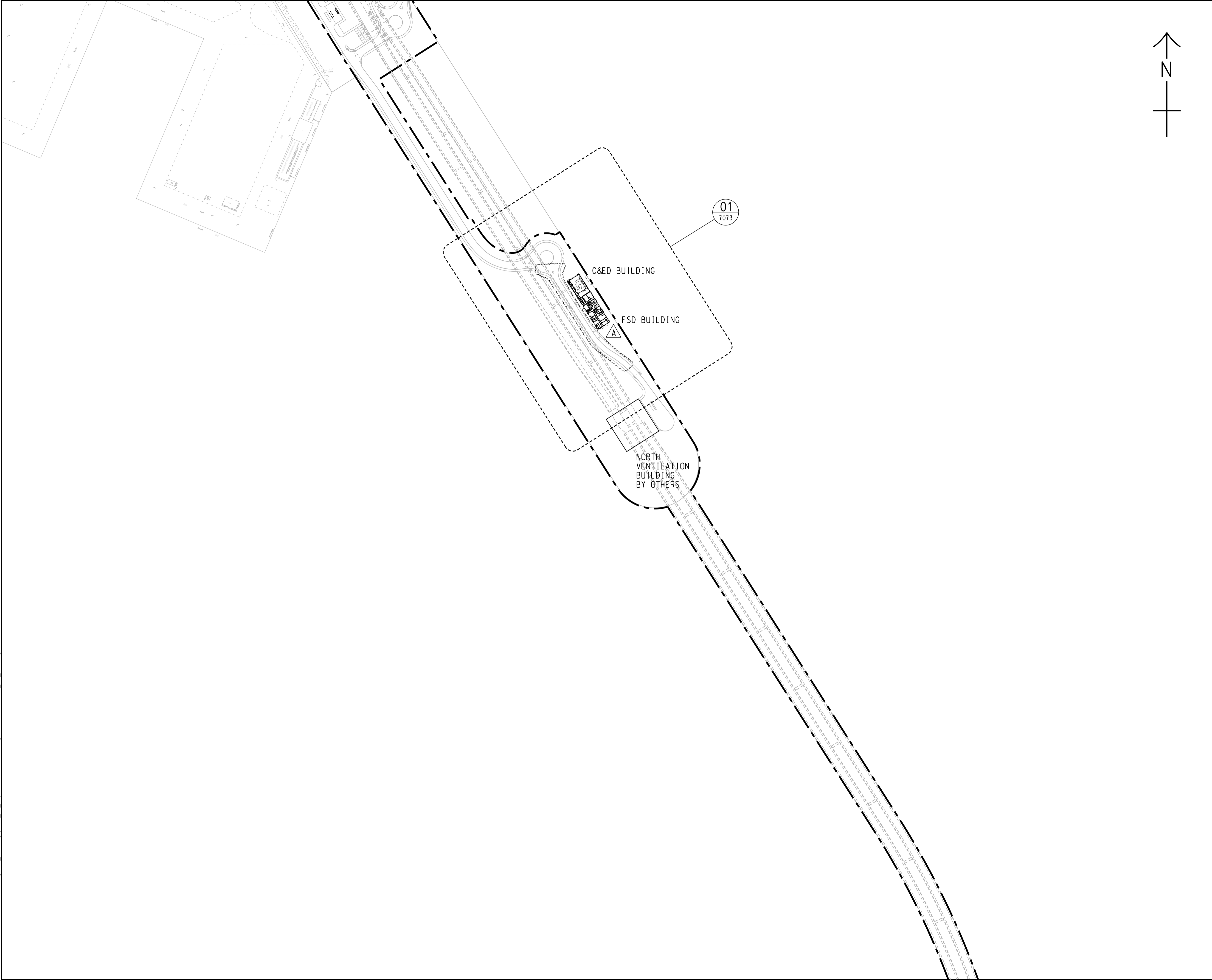
SHEET TITLE
 圖紙名稱
 ZONING PLAN (SHEET 2)

SHEET NUMBER
 圖紙編號
 60240249/C4/7062A

This drawing has been prepared for the use of AECOM's client. It may not be used, modified, reproduced or relied upon by third parties, except as agreed by AECOM or as required by law. AECOM accepts no responsibility, and denies any liability whatsoever, for any party that uses or relies on this drawing without AECOM's express written consent. Do not scale this document. All measurements must be obtained from the stated dimensions.

Project Management Initials: Designer: KATH Checked: SYLC Approved: CWN
 16/1/18
 CWS

Plot File by: jerrywong
 PATH: \\TOTO10-RSS\MSL\C4 Drawings\C4_Drawing (2018_01_02)\Architectural Drawings-DGN\60240249_C4_7063.dgn



AECOM

PROJECT
 項目
TUEN MUN - CHEK LAP KOK LINK

CONTRACT TITLE
 TUEN MUN - CHEK LAP KOK LINK - NORTHERN CONNECTION TUNNEL BUILDINGS, ELECTRICAL AND MECHANICAL WORKS

CLIENT
 業主

 路政署 HIGHWAYS DEPARTMENT
 港珠澳大橋香港工程管理局
 Hong Kong - Zhuhai - Macao Bridge
 Hong Kong Project Management Office

CONSULTANT
 工程顧問公司
 AECOM Asia Company Ltd.
 www.aecom.com

SUB-CONSULTANTS
 分判工程顧問公司

Figure 1.2c

ISSUE/REVISION
 修訂

I/R	DATE	DESCRIPTION	CHK.
修訂	日期	內容摘要	核校
A	JAN.18	TENDER ADDENDUM NO.1	SYLC
-	DEC.17	TENDER DRAWING	SYLC

STATUS
 階段

SCALE
 比例
 A1 1 : 2500

DIMENSION UNIT
 尺寸單位
 MILLIMETRES

KEY PLAN
 索引圖

PROJECT NO.
 項目編號
 60240249

CONTRACT NO.
 合約編號
 HY/2017/10

SHEET TITLE
 圖紙名稱
 ZONING PLAN
 (SHEET 3)

SHEET NUMBER
 圖紙編號
 60240249/C4/7063A

This drawing has been prepared for the use of AECOM's client. It may not be used, modified, reproduced or relied upon by third parties, except as agreed by AECOM or as required by law. AECOM accepts no responsibility, and denies any liability whatsoever, to any party that uses or relies on this drawing without AECOM's express written consent. Do not scale this document. All measurements must be obtained from the stated dimensions.