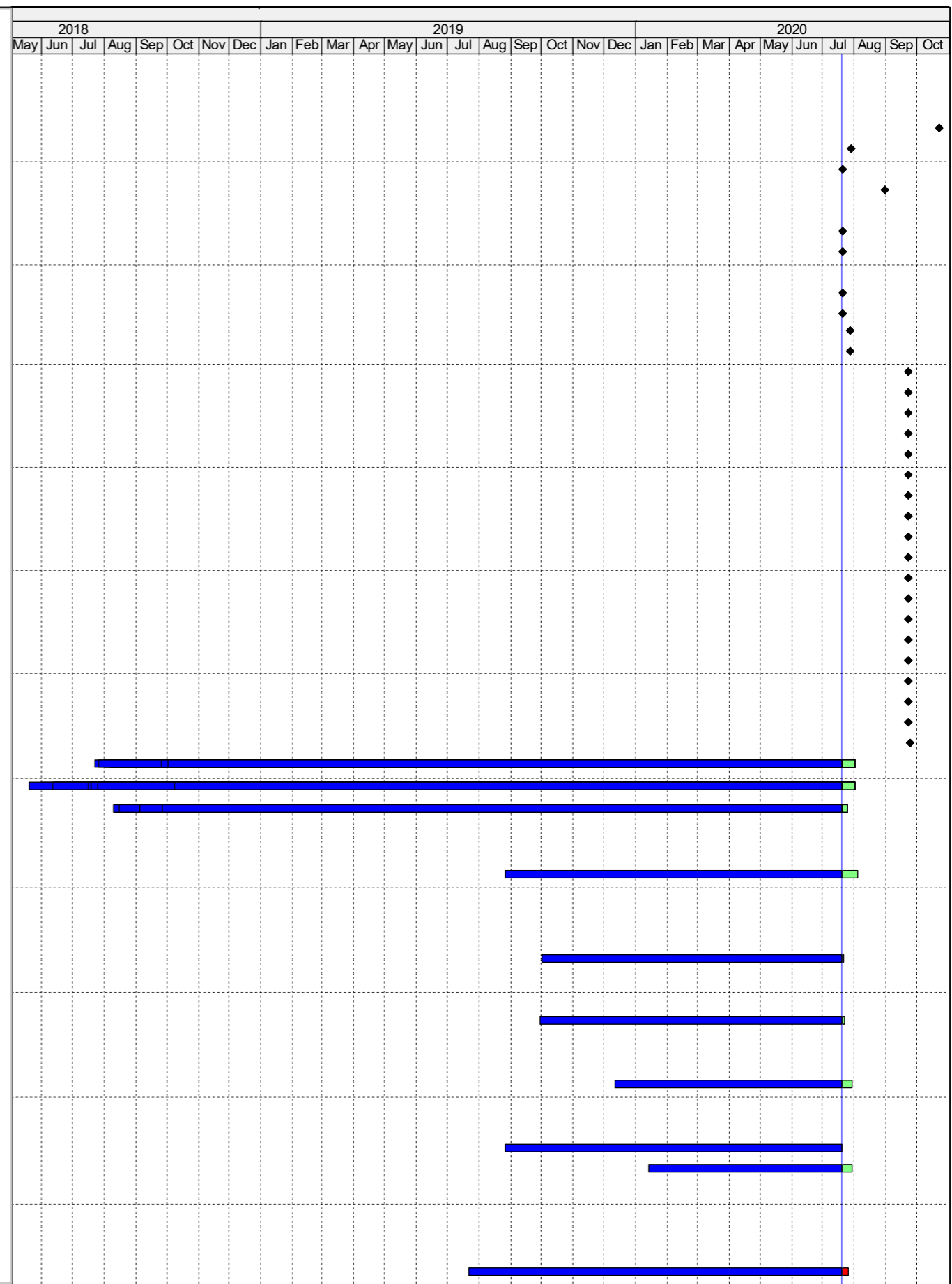


Appendix B

Construction Programme

ID	Activity	Duration (Days)	Duration % Complete
HY2017/10 - Works Programme Three Month Rolling Programme 20-Jul-20			
Contract Dates			
Key Dates			
KD08	KD08 - All Other Works for Tunnel Commissioning & Opening	0	0%
KD09	KD09 - C&ED Building, E&M Works, & FSD Inspection	0	0%
KD10	KD10 - FSD Building, E&M Works, & FSD Inspection	0	0%
KD11	KD11 - Landscape Soft Works & Trees Protection	0	0%
Portion Possession Dates			
P325	Possession to Portion XXII (Day 483)	0	0%
P335	Possession to Portion XXIII (Day 483)	0	0%
Portion Handover Dates			
H120	Vacate Portion XVIb (KD10+28)	0	0%
H130	Vacate Portion XVIa (KD10+28)	0	0%
H140	Vacate Portion XVb (KD9+28)	0	0%
H150	Vacate Portion XVa (KD9+28)	0	0%
H160	Vacate Portion XXIa (KD8+28)	0	0%
H170	Vacate Portion XXIb (KD8+28)	0	0%
H180	Vacate Portion XXII (KD8+28)	0	0%
H190	Vacate Portion XXIII (KD8+28)	0	0%
H200	Vacate Portion XII (KD8+28)	0	0%
H210	Vacate Portion XIII (KD8+28)	0	0%
H220	Vacate Portion XIV (KD8+28)	0	0%
H230	Vacate Portion XVIa (KD8+28)	0	0%
H240	Vacate Portion Ve (KD8+28)	0	0%
H250	Vacate Portion Vc (KD8+28)	0	0%
H260	Vacate Portion VIb (KD8+28)	0	0%
H270	Vacate Portion VIII (KD8+28)	0	0%
H280	Vacate Portion XI (KD8+28)	0	0%
H290	Vacate Portion VII (KD8+28)	0	0%
H300	Vacate Portion IX (KD8+28)	0	0%
H310	Vacate Portion X (KD8+28)	0	0%
H320	Vacate Portion XXIc (KD8+28)	0	0%
H330	Vacate Portion WA6 (KD8+28)	0	0%
H340	Vacate Portion XIX (KD11+28)	0	0%
Major Design Submission & Approval			
Major Material Submission & Approval			
Drawing Submission & Approval			
Key Date 1 - Toll Control Building (TCB) & TCSS Provision			
ABWF Works (for All)			
ATCB1130	ABWF second fix & final fix	90	85%
Key Date 2 - Administration Building, Maintenance Depot, Kiosk N2, TCSS Provision			
Administration Building (ADB)			
ABWF Works (for All)			
AADB1200	ABWF second fix & final fix	90	98%
Maintenance Depot			
ABWF Works (for All)			
AMD1070	ABWF second fix & final fix	80	97%
Key Date 6 - E&M Works for Administration Building, Maintenance Depot, North Vent Building, Kiosk N2			
Remaining Works			
KD6-OSW-1000	Remaining Works (Non FSI related)	42	80%
Key Date 3 - Satellite Control Building & TCSS Provision			
ABWF Works (for All)			
ASCB1020	ABWF Works to Plant Rooms G/F	60	100%
ASCB1070	ABWF second fix & final fix	56	85%
Key Date 5 - E&M Works for TCB, Toll Area, Kiosk N1, Underpass, Plant Rm, and Approach Roads			
E&M Works for TCB			
Installation			
G/F			
TCB-EMGF1240	E&M Installation - PD Plant Rooms - G/F	60	90%



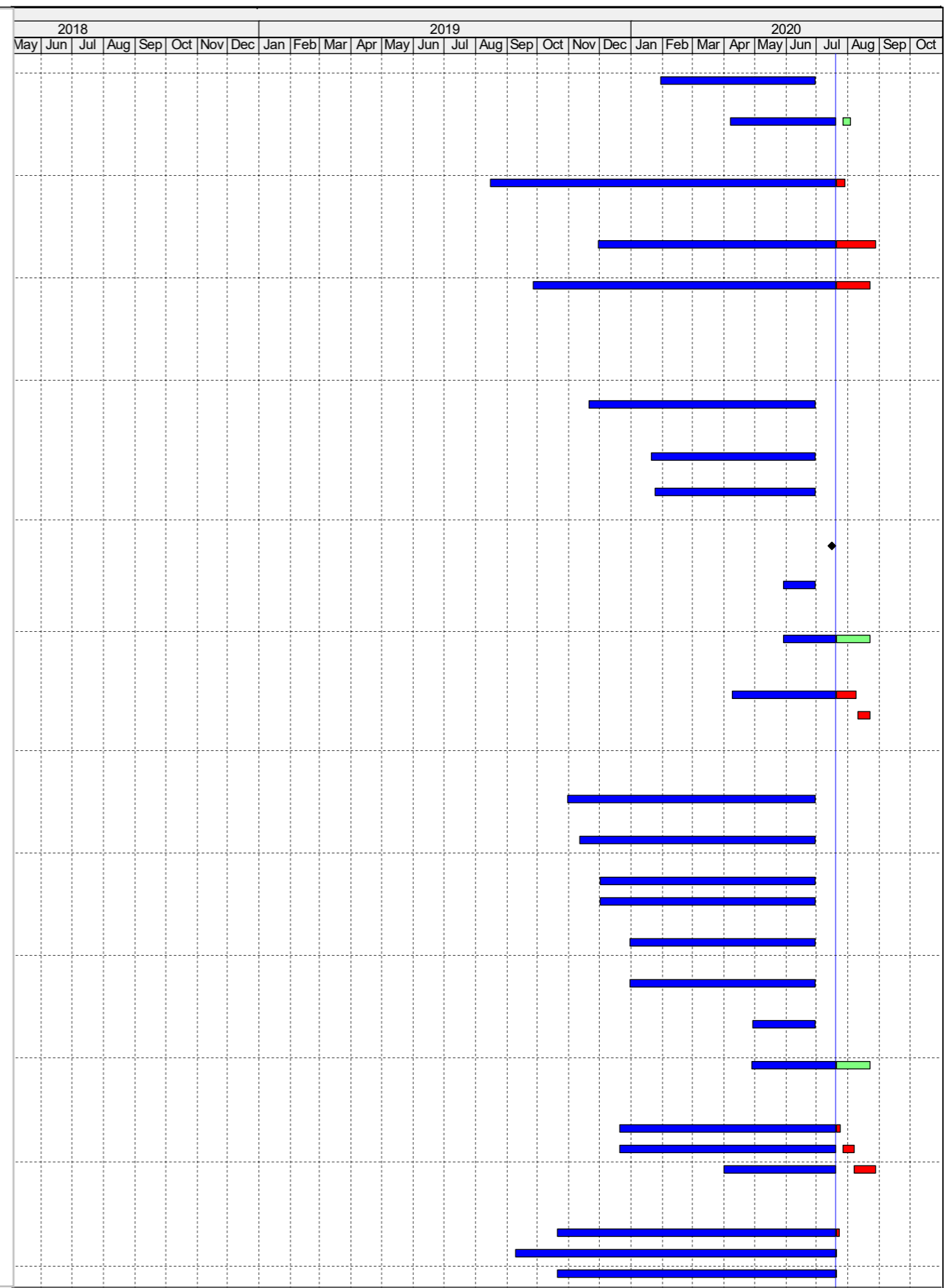
CONTRACT NO. HY2017/10

TM-CLKL NORTHERN CONNECTION TUNNEL BUILDINGS, E&M WORKS

THREE MONTHLY PROGRAMME AS OF 20 Jul 2020

P 1	Date	Revision	Checked	Approved
	20-Jul-20			

ID	Activity	Duration (Days)	Duration % Complete
Testing and Commissioning			
TCB-TC1030	Non-Essential T&C	12	100%
Remaining Works for TCB (Non-FSI related)			
KD5-OSW-1000	Remaining Works (Non FSI related)	42	85%
Underpass			
E&M Works at Underpass			
VU180	Cladding Works	25	68%
Approach Roads			
Under Portions IX, XI, XX			
AR150	T&C of Roading Lighting	30	0%
Under Portion X			
AR200	T&C of Roading Lighting in portion X	30	0%
Key Date 7 - E&M Works for Satellite Control Building and Kiosks S1&S2			
E&M Works for Satellite Control Building			
E&M Works			
Installation			
G/F			
SCB-EMGF1200	E&M Installation - PD Plant Rooms - G/F	90	100%
1/F			
SCB-EM1F1050	E&M Installation - Computer Room (TCSS) - 1/F	60	100%
SCB-EM1F1120	E&M Installation - ELV Plant Room - 1/F	70	100%
Lift Installation (L01)			
SCB-LF1050	Issuance of lift use permit	0	100%
Testing & Commissioning			
SCB-TC1030	Non-Essential T&C	30	100%
Remaining Works for SCB (Non-FSI related)			
KD7-OSW-1010	Remaining Works (Non-FSI related)	42	30%
Kiosk S2			
S2140	E&M works	36	50%
S2150	T&C	12	0%
Key Date 6C - E&M Works for South Ventilation Building			
Installation			
B2/F			
SVB-EMB21110	E&M Installation - PD Plant Rooms - B2/F	60	100%
B1/F			
SVB-EMB11120	E&M Installation - Elv Plant Rooms - B1/F	48	100%
G/F			
SVB-EMGF1200	E&M Installation - PD Plant Rooms - G/F	40	100%
SVB-EMGF1220	E&M Installation - Elv Plant Rooms - G/F	48	100%
1/F			
SVB-EM1F1280	E&M Installation - ELV Plant Rooms - 1/F	50	100%
2/F			
SVB-EM2F1120	E&M Installation - PD Plant Rooms - 2/F	40	100%
Testing & Commissioning			
SVB-TC1040	Non-Essential T&C	30	100%
Remaining Works for SVB (Non-FSI related)			
KD6C-OSW-1000	Remaining Works (Non-FSI related)	42	30%
Key Date 6A - E&M Works for Approach Roads at North Side			
Approach Roads			
EAR120	Road Lighting Cabling	50	90%
EAR130	Road Lighting Installation & Termination	50	80%
EAR140	T&C & Miscellaneous Works for Statutory Inspection	12	0%
Key Date 10 - FSD Building Structure & E&M Works			
ABWF Works			
AFSD1010	Door and Window Frames	19	80%
AFSD1020	ABWF Works to Plant Rooms G/F	56	99%
AFSD1021	ABWF Works to Plant Rooms 1/F	56	99%



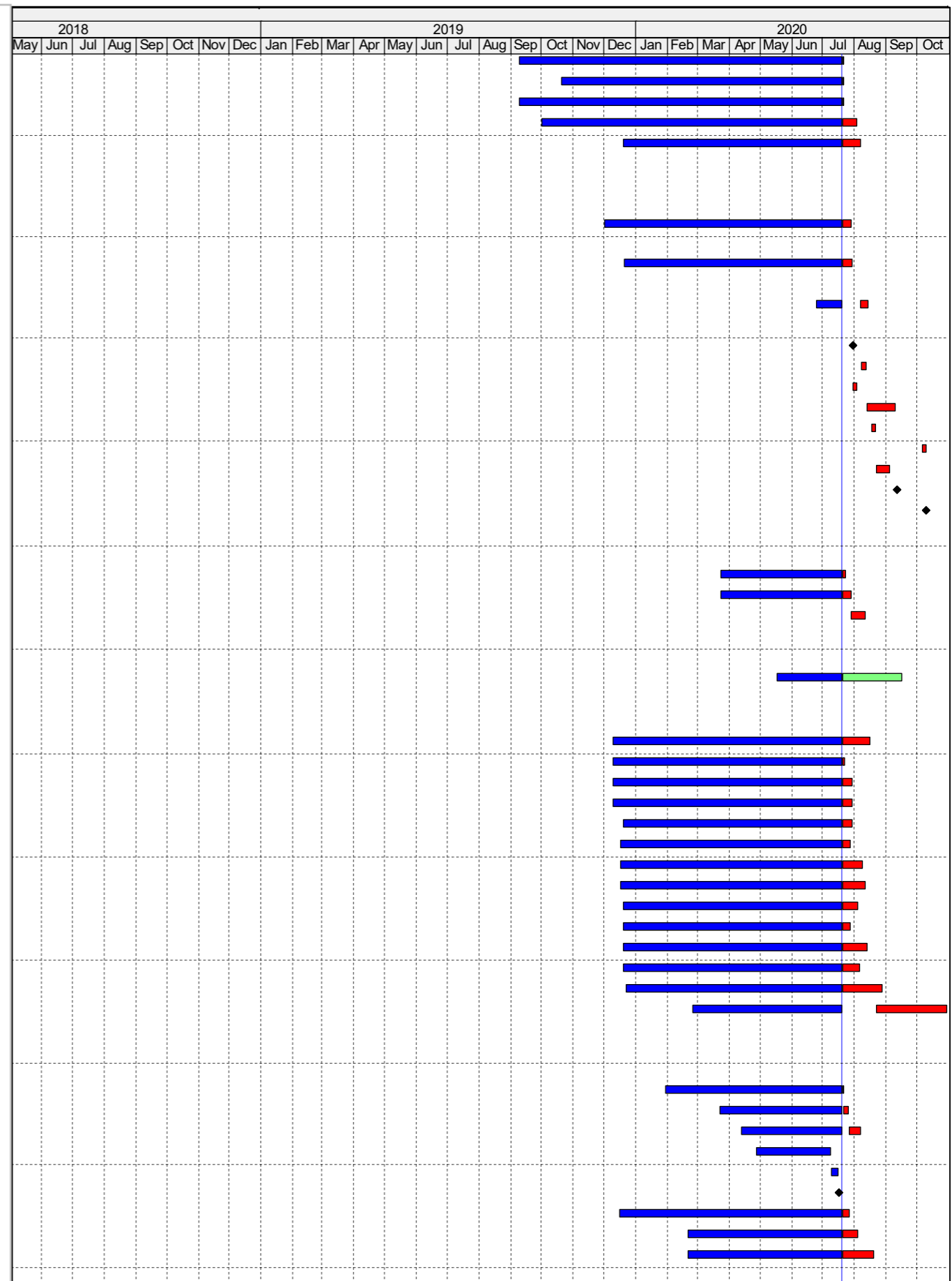
CONTRACT NO. HY2017/10

TM-CLKL NORTHERN CONNECTION TUNNEL BUILDINGS, E&M WORKS

THREE MONTHLY PROGRAMME AS OF 20 Jul 2020

P 2	Date	Revision	Checked	Approved
	20-Jul-20			

ID	Activity	Duration (Days)	Duration % Complete
AFSD1030	ABWF Works to Office and Corridors G/F	124	99%
AFSD1031	ABWF Works to Office and Corridors 1/F	124	99%
AFSD1040	ABWF Works to Toilets G/F	136	99%
AFSD1060	External Cladding and Wall Plastering	101	88%
AFSD1070	ABWF second fix & final fix	73	78%
E&M Works			
Installation			
G/F			
FSDB-EMGF1160	E&M Installation - Eiv Plant Rooms - G/F	50	85%
1/F			
FSDB-EM1F1140	E&M Installation - PD Plant Rooms - 1/F	60	85%
Testing and Commissioning			
FSDB-TC1030	Non-Essential T&C	30	80%
Statutory Inspections and approvals			
FSDB-SI1040	Submit WWO46 Part IV for PD	0	0%
FSDB-SI1060	WSD inspection of Plumbing Installation (PL)	4	0%
FSDB-SI1070	WSD inspection of Plumbing Installation (FS)	4	0%
FSDB-SI1080	Water Samples Test	24	0%
FSDB-SI1090	Obtain Water Certificate and water supply connection - FS	4	0%
FSDB-SI1100	Obtain Water Certificate and water supply connection - PL	4	0%
FSDB-SI1120	FSD Inspection	12	0%
FSDB-SI1130	Obtain FSI Certificate FS 172	0	0%
FSDB-SI1140	KD10 Achieved	0	0%
Key Date 7A - E&M Works for Approach Roads at South Side			
Approach Roads			
EAR180	Road Lighting Cabling (Via)	18	80%
EAR190	Road Lighting Installation & Termination	18	60%
EAR200	T&C	12	0%
Tunnel			
Remaining Works for Tunnel (CH2500 - 1800)			
A1010	Remaining Works (Non FSI related)	98	48.98%
Key Date 9 - C&ED Building & E&M Works			
ABWF Works			
ACED1010	Door and Window Frames	48	50%
ACED1020	ABWF Works to Plant Rooms G/F	60	95%
ACED1021	ABWF Works to Plant Rooms 1/F	60	85%
ACED1022	ABWF Works to Plant Rooms 2/F	60	85%
ACED1023	ABWF Works to Plant Rooms 3/F	60	85%
ACED1030	ABWF Works to Office and Corridors G/F	133	95%
ACED1031	ABWF Works to Office and Corridors 1/F	118	85%
ACED1032	ABWF Works to Office and Corridors 2/F	130	85%
ACED1033	ABWF Works to Office and Corridors 3/F	92	85%
ACED1040	ABWF Works to Toilets G/F	142	95%
ACED1041	ABWF Works to Toilets 2/F	142	85%
ACED1042	ABWF Works to Toilets 3/F	98	85%
ACED1060	External Cladding and Wall Plastering	97	65%
ACED1070	ABWF second fix & final fix	69	20%
E&M Works			
Installation			
G/F			
C&EDB-GF1010	E&M Installation - 1st fix - G/F	40	97%
C&EDB-GF1020	E&M Installation - 2nd fix - G/F	40	88%
C&EDB-GF1030	E&M Installation - Final fix - G/F	40	75%
C&EDB-GF1070	Installation by CLP - CLP Tx Room - G/F	82	100%
C&EDB-GF1080	Wiring Inspection with CLP	12	100%
C&EDB-GF1090	Power On Energization by CLP	0	100%
C&EDB-GF1120	E&M Installation - Generator & Fuel Tank Rooms - G/F	90	93%
C&EDB-GF1140	E&M Installation - FS Plant Rooms - G/F	90	85%
C&EDB-GF1160	E&M Installation - Eiv Plant Rooms - G/F	90	70%
1/F			



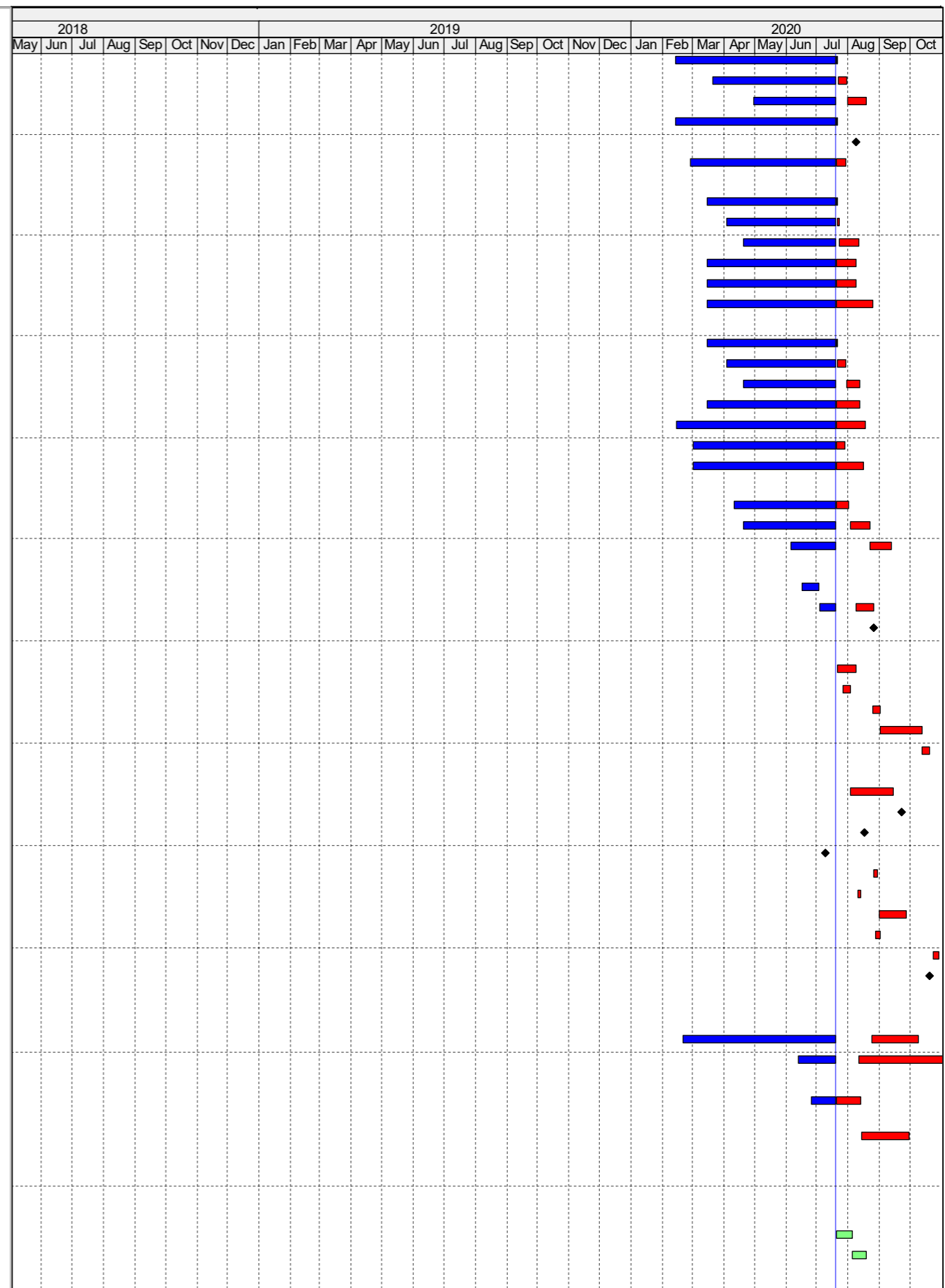
CONTRACT NO. HY2017/10

TM-CLKL NORTHERN CONNECTION TUNNEL BUILDINGS, E&M WORKS

THREE MONTHLY PROGRAMME AS OF 20 Jul 2020

P 3	Date	Revision	Checked	Approved
	20-Jul-20			

ID	Activity	Duration (Days)	Duration % Complete
C&EDB-1F1010	E&M Installation - 1st fix - 1/F	40	95%
C&EDB-1F1020	E&M Installation - 2nd fix - 1/F	40	80%
C&EDB-1F1030	E&M Installation - Final fix - 1/F	40	60%
C&EDB-1F1050	E&M Installation - LV Switch Room - 1/F	60	98%
C&EDB-1F1070	Sub-Circuit Power On - LV Switch Room - 1/F	0	0%
C&EDB-1F1090	E&M Installation - Electrical Plant Rooms - 1/F	90	90%
2/F			
C&EDB-2F1010	E&M Installation - 1st fix - 2/F	40	97%
C&EDB-2F1020	E&M Installation - 2nd fix - 2/F	40	95%
C&EDB-2F1030	E&M Installation - Final fix - 2/F	40	60%
C&EDB-2F1060	E&M Installation - Electrical Plant Rooms - 2/F	90	80%
C&EDB-2F1080	E&M Installation - FS Plant Rooms - 2/F	90	80%
C&EDB-2F1100	E&M Installation - Eiv Plant Rooms - 2/F	90	65%
3/F			
C&EDB-3F1010	E&M Installation - 1st fix - 3/F	30	95%
C&EDB-3F1020	E&M Installation - 2nd fix - 3/F	30	75%
C&EDB-3F1030	E&M Installation - Final fix - 3/F	30	60%
C&EDB-3F1060	E&M Installation - Electrical Plant Rooms - 3/F	84	75%
C&EDB-3F1080	E&M Installation - MVAC Plant Rooms - 3/F	84	70%
C&EDB-3F1100	E&M Installation - FS Plant Rooms - 3/F	80	90%
C&EDB-3F1120	E&M Installation - PD Plant Rooms - 3/F	60	60%
Roof			
C&EDB-RF1010	E&M Installation - 1st fix - Roof	30	60%
C&EDB-RF1020	E&M Installation - 2nd fix - Roof	25	30%
C&EDB-RF1030	E&M Installation - Final fix - Roof	20	10%
Lift Installation			
C&EDB-LF1030	Testing & commissioning	12	100%
C&EDB-LF1040	Final adjustment, Submission of Form LE5 & EMSD processing	30	50%
C&EDB-LF1050	Issuance of lift use permit	0	0%
Testing and Commissioning			
C&EDB-TC1000	T&C for Subcircuit Power On	16	0%
C&EDB-TC1010	T&C for DG Licence	6	0%
C&EDB-TC1020	Equipment Start-up T&C for FSI	6	0%
C&EDB-TC1023	Individual E&M System T&C for FSI	33	0%
C&EDB-TC1025	Intergrated T&C for FSI	6	0%
Statutory Inspections and approvals			
C&EDB-SI1020	DG Inspection by FSD	36	0%
C&EDB-SI1030	Obtain DG Licence	0	0%
C&EDB-SI1040	Submit WWO46 Part IV for PD	0	0%
C&EDB-SI1050	Submit WWO46 Part IV for FS	0	100%
C&EDB-SI1060	WSD inspection of Plumbing Installation (PL)	4	0%
C&EDB-SI1070	WSD inspection of Plumbing Installation (FS)	4	0%
C&EDB-SI1080	Water Samples Test	24	0%
C&EDB-SI1090	Obtain Water Certificate and water supply connection - FS	4	0%
C&EDB-SI1100	Obtain Water Certificate and water supply connection - PL	4	0%
C&EDB-SI1110	Final Submission of Form FSI 314 / 501 to FSD	0	0%
Key Date 11 - Landscape Soft Works & Trees Protection			
Landscape Soft Works			
SL120	Landscape Soft Works at North Side (wet season)	122	68.85%
SL140	Landscape Soft Works at South Side (wet season)	102	15%
Trees Protection			
SL203	Protection Existing Trees & Submit Report with Photographic Record No. 14	41	46.34%
SL204	Protection Existing Trees & Submit Report with Photographic Record No. 15	40	0%
Key Date 8 - All Works for Tunnel Commissioning & Opening			
Petrol Filling Station			
Structure			
PS140	Petrol Filling Station Roof	14	0%
PS180	Concrete Plinth	12	0%
E&M Works			



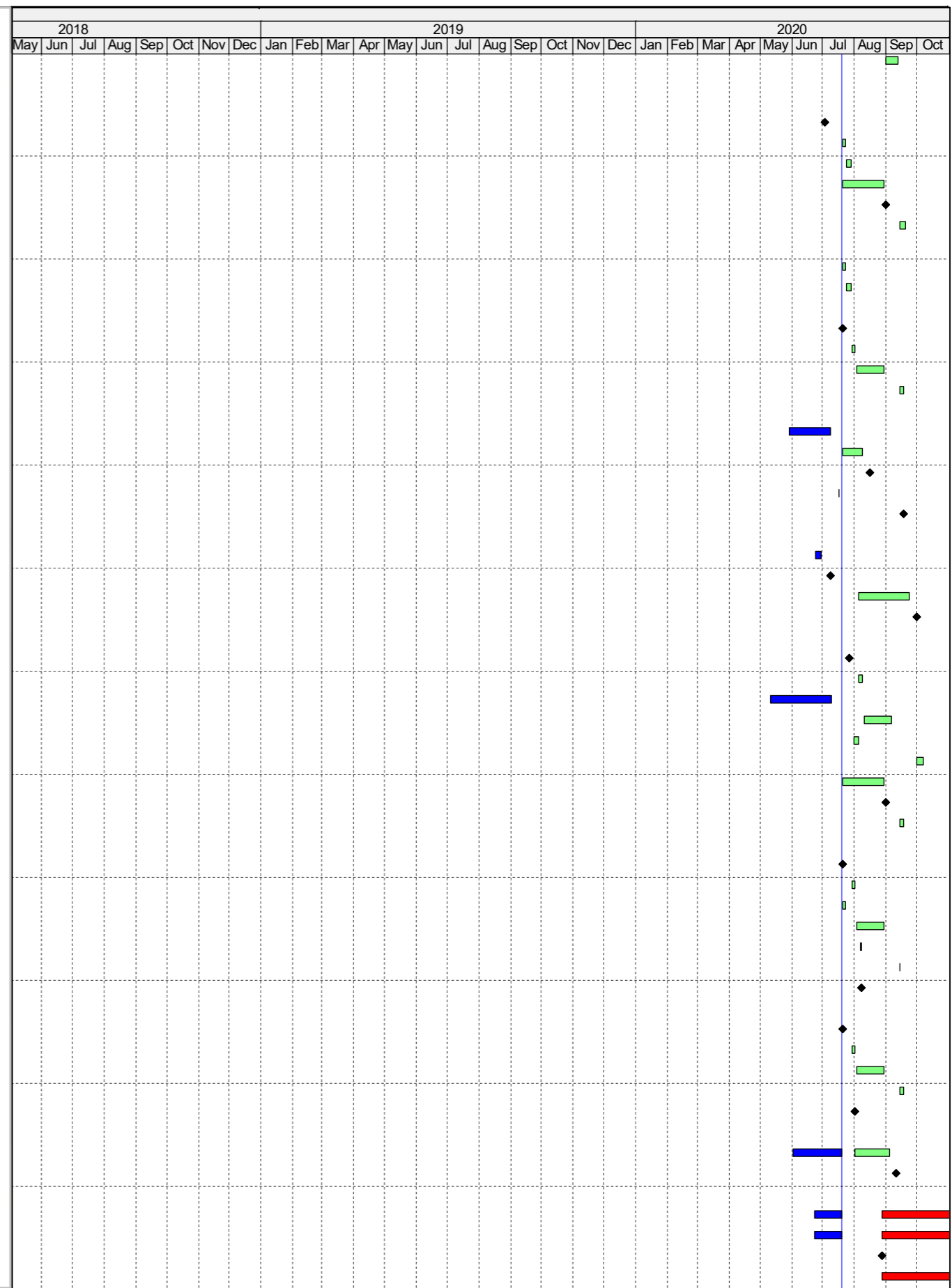
CONTRACT NO. HY2017/10

TM-CLKL NORTHERN CONNECTION TUNNEL BUILDINGS, E&M WORKS

THREE MONTHLY PROGRAMME AS OF 20 Jul 2020

P 4	Date	Revision	Checked	Approved
	20-Jul-20			

ID	Activity	Duration (Days)	Duration % Complete
EPS140	T&C	12	0%
Statutory Inspections and approvals			
Administration Building			
ADB-SI1010	Submit WWO46 Part IV for PD	0	100%
ADB-SI1030	WSD inspection of Plumbing Installation (PL)	4	0%
ADB-SI1070	Obtain Water Certificate and water supply connection - PL	4	0%
ADB-SI1120	EMSD examines site acceptance report and acceptance	36	0%
ADB-SI1130	Submit WWO46 part IV for CT plumbing works	0	0%
ADB-SI1140	WSD inspection and water connection for CT plumbing works	6	0%
Maintenance Depot			
MD-SI1060	WSD inspection of Plumbing Installation (PL)	4	0%
MD-SI1100	Obtain Water Certificate and water supply connection - PL	4	0%
North Ventilation Building			
NVB-SI1090	Submit WWO46 Part IV for PD	0	0%
NVB-SI1110	WSD inspection of Plumbing Installation (PL)	4	0%
NVB-SI1130	Water Samples Test	24	0%
NVB-SI1140	Obtain Water Certificate and water supply connection - PL	4	0%
Petrol Filling Station			
PFS-SI1010	T&C of E&M System	6	100%
PFS-SI1030	DG Inspection	18	0%
PFS-SI1040	Obtain DG Licence	0	0%
PFS-SI1060	FSD Inspection	42	100%
PFS-SI1070	Obtain Fire Certificate	0	0%
Underpass & Plant Room			
VUP-SI1095	Obtain Water Certificate and water supply connection - FS	4	100%
VUP-SI2000	Final Submission of Form FSI 314 / 501 to FSD	0	100%
VUP-SI2010	FSD Inspection	42	0%
VUP-SI2020	Obtain FSI Certificate FS 172	0	0%
Toll Control Building & Toll Collector Subway			
TCB-SI2000	Submit WWO46 Part IV for PD	0	0%
TCB-SI2020	WSD inspection of Plumbing Installation (PL)	4	0%
TCB-SI2030	WSD inspection of Plumbing Installation (FS)	4	100%
TCB-SI2040	Water Samples Test	24	0%
TCB-SI2045	Obtain Water Certificate and water supply connection - FS	4	0%
TCB-SI2050	Obtain Water Certificate and water supply connection - PL	4	0%
TCB-SI3010	EMSD examines site acceptance report and acceptance	36	0%
TCB-SI3020	Submit WWO46 part IV for CT plumbing works	0	0%
TCB-SI3030	WSD inspection and water connection for CT plumbing works	4	0%
Satellite Control Building			
SCB-SI1040	Submit WWO46 Part IV for PD	0	0%
SCB-SI1060	WSD inspection of Plumbing Installation (PL)	4	0%
SCB-SI1070	WSD inspection of Plumbing Installation (FS)	4	0%
SCB-SI1080	Water Samples Test	24	0%
SCB-SI1090	Obtain Water Certificate and water supply connection - FS	1	0%
SCB-SI1100	Obtain Water Certificate and water supply connection - PL	1	0%
SCB-SI1130	Obtain FSI Certificate FS 172	0	0%
South Ventilation Building			
SVB-SI1090	Submit WWO46 Part IV for PD	0	0%
SVB-SI1110	WSD inspection of Plumbing Installation (PL)	4	0%
SVB-SI1130	Water Samples Test	24	0%
SVB-SI1140	Obtain Water Certificate and water supply connection - PL	4	0%
SVB-SI2020	Obtain FSI Certificate FS 172	0	0%
Tunnel			
TNL-10TC2010	FSD inspection & re-inspection	42	30%
TNL-10TC2020	Obtain Fire Certificate	0	0%
Others Works for Road Opening			
OW120	Hard Landscaping Works & Irrigation Systems	96	0%
OW130	Street Furniture	96	0%
OW135	All T&C Completed	0	0%
OW140	Toll Collection System Test	70	0%



CONTRACT NO. HY2017/10

TM-CLKL NORTHERN CONNECTION TUNNEL BUILDINGS, E&M WORKS

THREE MONTHLY PROGRAMME AS OF 20 Jul 2020

P 5	Date	Revision	Checked	Approved
	20-Jul-20			

