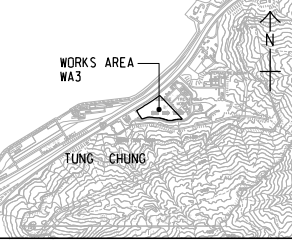
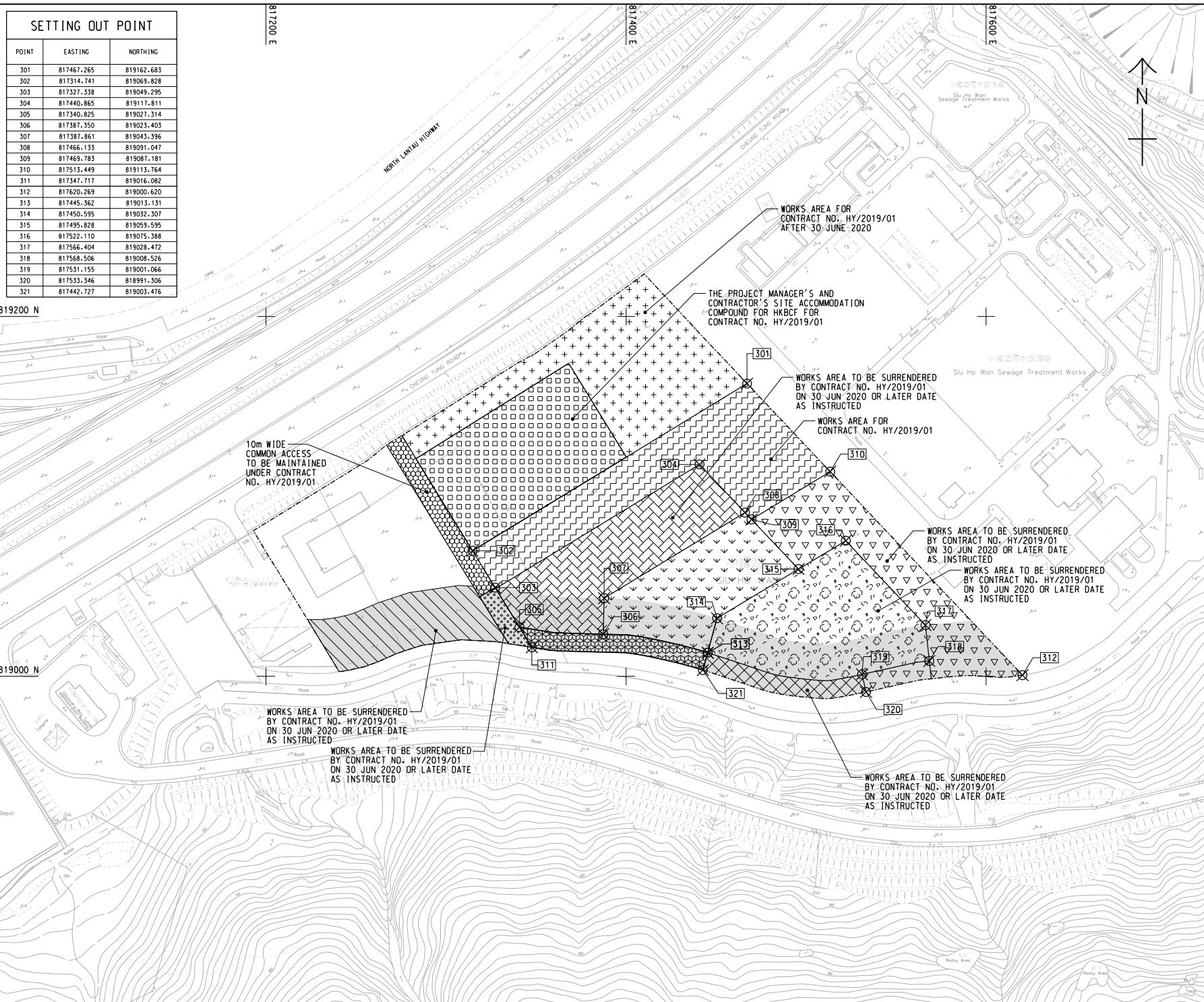


SETTING OUT POINT		
POINT	EASTING	NORTHING
301	817467.265	819162.683
302	817314.741	819069.828
303	817327.338	819049.295
304	817440.865	819117.811
305	817340.825	819027.314
306	817387.350	819023.403
307	817387.861	819043.396
308	817466.133	819091.047
309	817469.783	819087.181
310	817513.449	819113.764
311	817347.717	819016.082
312	817620.269	819000.620
313	817445.362	819013.131
314	817450.595	819032.307
315	817495.828	819059.595
316	817522.110	819075.388
317	817566.404	819028.472
318	817568.506	819008.526
319	817531.155	819001.066
320	817533.346	818991.306
321	817442.727	819003.476



LOCATION PLAN
SCALE 1 : 25000

NOTES:
 1. COORDINATES ARE RELATED TO HONG KONG METRIC GRID (1980).
 2. DIMENSIONS ARE IN MILLIMETER AND CHAINAGE ARE IN METRES UNLESS OTHERWISE SHOWN.

LEGEND:

	WORKS AREA BOUNDARY
	PORTION 3.1
	PORTION 3.2
	PORTION 3.3
	PORTION 3.4
	PORTION 3.5
	PORTION 3.6
	PORTION 3.7
	PORTION 3.8
	PORTION 3.9
	PORTION 3.10
	PORTION 3.11
	PORTION 3.12
	NON-BUILDING AREA 8200m ² (WHOLE)

REV. NO.	DESCRIPTION	DATE
1	TENDER DRAWING	TTHK 06/2019

HIGHWAYS DEPARTMENT
 Major Works Project Management Office (Special Duties)
 HONG KONG-ZHUHAI-MACAO BRIDGE
 HONG KONG BOUNDARY CROSSING FACILITIES
 - PHASE 2 AND OTHER WORKS

WORKS AREA WA3

AECOM +
 Rogers Stirk Harbour + Partners
Aedas
 BURO HAPPOLD ATKINS ADI +

DRGNO. 60191048/C9/000/C00/1051
 圖紙編號

DESIGNED BY TTHK	CONTRACT NO. HY/2019/01	P. Dir. APPROVED SCL
DRAWN BY JC	STATUS REV	
SCALE A1 1 : 1000	DRAWING UNIT IN METRES	

© COPYRIGHT RESERVED
 版權 所 有

Plot File by : 2019/06/20 9:34:39