

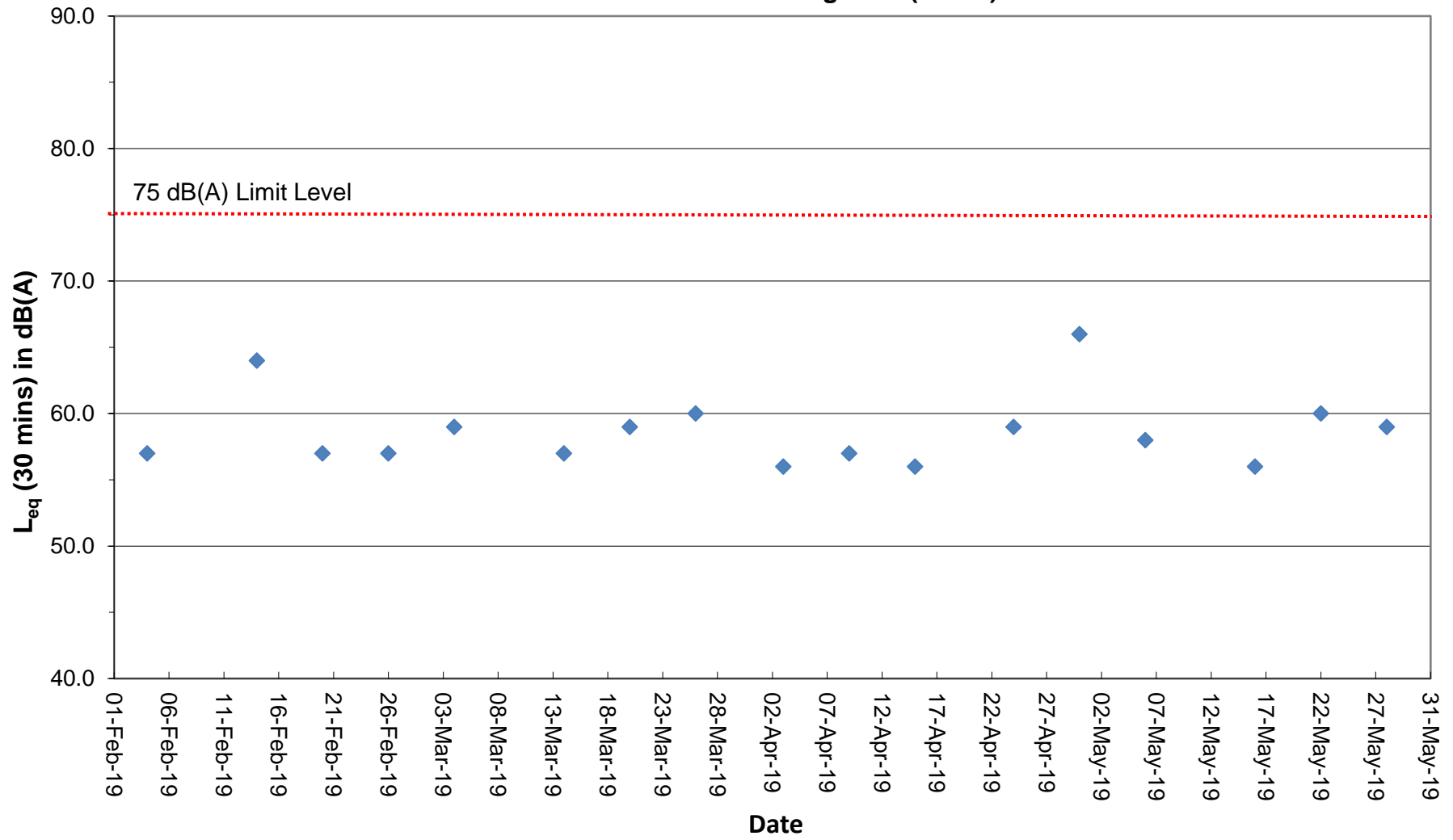
Noise Monitoring Data

Project	Works	Date (yyyy-mm-dd)	Station	Start Time	Wind Speed, m/s	1st set 5mins	2nd set 5mins	3rd set 5mins	4th set 5mins	5th set 5mins	6th set 5mins	Overall (30mins)*	Unit
HKLR	HY/2011/03	2019-03-04	NMS5	15:45	<5	Leq: 58.0	Leq: 57.3	Leq: 55.2	Leq: 57.2	Leq: 55.4	Leq: 52.8	Leq: 59	dB(A)
						L10: 61.5	L10: 60.0	L10: 57.5	L10: 60.0	L10: 58.0	L10: 54.0	L10: 62	
						L90: 53.5	L90: 53.0	L90: 51.0	L90: 52.5	L90: 50.5	L90: 49.5	L90: 55	
HKLR	HY/2011/03	2019-03-14	NMS5	10:03	<5	Leq: 53.9	Leq: 54.6	Leq: 53.6	Leq: 54.9	Leq: 55.0	Leq: 54.6	Leq: 57	dB(A)
						L10: 56.5	L10: 57.5	L10: 55.5	L10: 57.5	L10: 57.5	L10: 57.0	L10: 60	
						L90: 49.5	L90: 49.5	L90: 50.0	L90: 49.0	L90: 50.5	L90: 50.0	L90: 53	
HKLR	HY/2011/03	2019-03-20	NMS5	09:12	<5	Leq: 54.9	Leq: 55.1	Leq: 55.5	Leq: 55.9	Leq: 55.8	Leq: 55.9	Leq: 59	dB(A)
						L10: 56.0	L10: 56.5	L10: 58.0	L10: 56.0	L10: 57.5	L10: 57.5	L10: 60	
						L90: 50.5	L90: 49.0	L90: 48.0	L90: 48.5	L90: 49.5	L90: 48.5	L90: 52	
HKLR	HY/2011/03	2019-03-26	NMS5	09:12	<5	Leq: 57.3	Leq: 60.8	Leq: 55.2	Leq: 54.4	Leq: 55.5	Leq: 56.3	Leq: 60	dB(A)
						L10: 59.0	L10: 61.5	L10: 57.5	L10: 56.0	L10: 57.5	L10: 58.5	L10: 62	
						L90: 50.5	L90: 50.5	L90: 50.0	L90: 49.5	L90: 50.0	L90: 50.0	L90: 53	
HKLR	HY/2011/03	2019-04-03	NMS5	09:07	<5	Leq: 51.5	Leq: 52.7	Leq: 51.6	Leq: 52.3	Leq: 54.6	Leq: 53.4	Leq: 56	dB(A)
						L10: 53.0	L10: 55.0	L10: 53.5	L10: 54.0	L10: 57.5	L10: 55.5	L10: 58	
						L90: 49.0	L90: 49.0	L90: 48.5	L90: 49.5	L90: 50.0	L90: 50.0	L90: 52	
HKLR	HY/2011/03	2019-04-09	NMS5	09:21	<5	Leq: 53.7	Leq: 53.5	Leq: 56.8	Leq: 49.1	Leq: 50.7	Leq: 54.5	Leq: 57	dB(A)
						L10: 55.0	L10: 55.5	L10: 60.0	L10: 50.0	L10: 52.0	L10: 58.5	L10: 59	
						L90: 48.5	L90: 48.5	L90: 49.5	L90: 48.0	L90: 48.5	L90: 48.0	L90: 52	
HKLR	HY/2011/03	2019-04-15	NMS5	16:50	<5	Leq: 54.3	Leq: 54.1	Leq: 52.4	Leq: 51.7	Leq: 53.5	Leq: 50.7	Leq: 56	dB(A)
						L10: 58.0	L10: 56.5	L10: 55.5	L10: 54.5	L10: 57.0	L10: 52.5	L10: 59	
						L90: 48.5	L90: 49.0	L90: 48.5	L90: 48.5	L90: 48.5	L90: 48.0	L90: 52	
HKLR	HY/2011/03	2019-04-24	NMS5	09:01	<5	Leq: 57.4	Leq: 55.7	Leq: 56.4	Leq: 57.0	Leq: 56.3	Leq: 55.9	Leq: 59	dB(A)
						L10: 59.5	L10: 57.5	L10: 58.0	L10: 58.0	L10: 58.0	L10: 57.5	L10: 61	
						L90: 52.5	L90: 52.5	L90: 53.5	L90: 53.0	L90: 53.5	L90: 53.0	L90: 56	
HKLR	HY/2011/03	2019-04-30	NMS5	09:07	<5	Leq: 62.6	Leq: 62.7	Leq: 63.1	Leq: 62.5	Leq: 62.6	Leq: 63.0	Leq: 66	dB(A)
						L10: 64.5	L10: 64.5	L10: 65.0	L10: 65.0	L10: 64.5	L10: 64.5	L10: 68	
						L90: 58.0	L90: 58.0	L90: 58.5	L90: 58.5	L90: 58.0	L90: 58.5	L90: 61	
HKLR	HY/2011/03	2019-05-06	NMS5	09:24	<5	Leq: 54.3	Leq: 55.3	Leq: 55.6	Leq: 54.5	Leq: 54.3	Leq: 55.3	Leq: 58	dB(A)
						L10: 57.5	L10: 58.5	L10: 59.0	L10: 57.0	L10: 57.0	L10: 58.0	L10: 61	
						L90: 49.5	L90: 50.0	L90: 50.0	L90: 50.5	L90: 48.5	L90: 50.0	L90: 53	
HKLR	HY/2011/03	2019-05-16	NMS5	09:12	<5	Leq: 54.5	Leq: 53.4	Leq: 52.4	Leq: 51.2	Leq: 52.2	Leq: 50.9	Leq: 56	dB(A)
						L10: 56.0	L10: 54.5	L10: 55.0	L10: 52.5	L10: 54.5	L10: 52.0	L10: 57	
						L90: 52.5	L90: 51.5	L90: 49.0	L90: 48.5	L90: 49.5	L90: 49.0	L90: 53	
HKLR	HY/2011/03	2019-05-22	NMS5	09:10	<5	Leq: 54.7	Leq: 55.7	Leq: 54.6	Leq: 54.6	Leq: 59.2	Leq: 59.8	Leq: 60	dB(A)
						L10: 57.0	L10: 59.0	L10: 57.5	L10: 57.0	L10: 62.5	L10: 63.5	L10: 63	
						L90: 50.5	L90: 51.0	L90: 49.0	L90: 50.5	L90: 52.5	L90: 53.0	L90: 54	
HKLR	HY/2011/03	2019-05-28	NMS5	15:28	<5	Leq: 55.6	Leq: 54.8	Leq: 55.8	Leq: 55.2	Leq: 54.6	Leq: 59.9	Leq: 59	dB(A)
						L10: 58.0	L10: 56.5	L10: 58.5	L10: 57.5	L10: 56.5	L10: 65.0	L10: 63	
						L90: 52.0	L90: 51.5	L90: 51.0	L90: 51.0	L90: 51.0	L90: 51.5	L90: 54	

Remark:

(1)\* A facade correction of +3 dB(A) was applied to the measured noise level. The noise measurement results are rounded to the nearest whole dB(A), with values of 0.5 or more being rounded upwards.

### Continuous Noise Monitoring Data (NMS5)



Remark:

(1) A facade correction of +3 dB(A) was applied to the measured noise level.